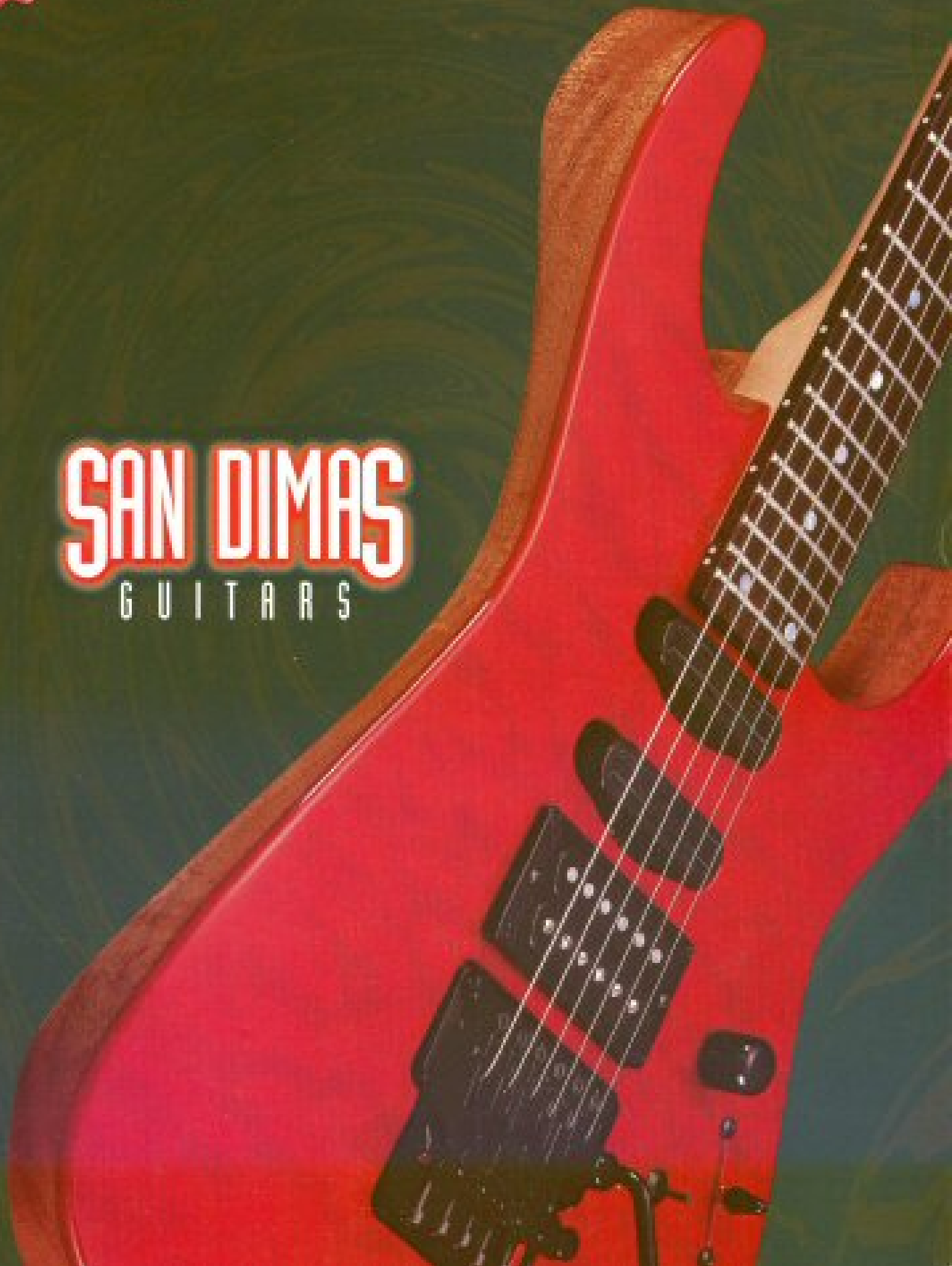


# SAN DIMAS

GUITARS





## SAN DIMAS I

- Rosewood fingerboard
- Birdseye Maple neck
- Gotoh custom tuning gears
- 24 jumbo frets
- Original Floyd Rose bridge
- Dimarzio custom humbucker pickups
- Available in Koa or Mahogany
- Hand-rubbed finish



## SAN DIMAS II

- Rosewood fingerboard
- Birdseye Maple neck
- Sperzel locking tuning gears
- 24 jumbo frets
- Wilkinson VS 100 tremolo
- Black hardware
- Dimarzio custom humbucker pickups
- Available in Koa or Mahogany
- Hand-rubbed finish



## SAN DIMAS III

- Birdseye Maple neck
- Gotoh custom tuning gears
- 24 jumbo frets
- Original Floyd Rose bridge
- Black hardware
- Dimarzio Chopper and Fast Track single-coil and Tone Zone humbucker pickups
- Mahogany body with Quilted Maple drop top
- Available in Transparent Red, Transparent Green, Transparent Purple and Vintage Sunburst



## SAN DIMAS III W

- Rosewood fingerboard
- Birdseye Maple neck
- Sperzel locking tuning gears
- Wilkinson VS 100 tremolo
- Dimarzio Chopper and Fast Track single-coil and Tone Zone humbucker pickups
- Mahogany body with flamed maple drop top
- Available in Transparent Red, Transparent Green, Transparent Purple and Vintage Sunburst



## SAN DIMAS TRADITIONAL

- Rosewood or maple fingerboard
- Quartersawn Maple neck
- Sperzel locking tuning gears
- Custom steel fulcrum tremolo
- Dimarzio (Vintage) single-coil pickups
- Alder body
- Available in Sapphire Blue, Garnet Red, Forest Green, Black and Snow White



## SAN DIMAS TL-1 WITH FISHMAN POWERBRIDGE™

- Ash body
- Maple fingerboard
- Quartersawn Maple neck
- 22 jumbo frets
- Wilkinson HT 100 equipped with Fishman Powerbridge™
- TLR 10 pickups at bridge, TLF 12 pickups at neck
- Available in Butterscotch, Tobacco Burst and Black



The Fishman Powerbridge™ is a Wilkinson HT 100 tailpiece equipped with solid steel, bridge-mounted piezos. This bridge allows the blending of acoustic tone into the guitar's regular electric tone. Using a Y-cable, the two signals can be merged to achieve a perfect blend, or either signal can be chosen exclusively. The best results are achieved using a regular guitar amp for the magnetic pickups and running the piezo signal through a PA system.

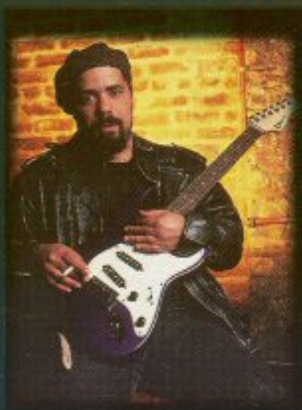




In 1979 the first Charvel guitars were built in a small factory in San Dimas, California. Sought after and played by the best guitarists in the world, the instruments built in that period are now considered collector pieces and virtually impossible to find. However, the spirit of these early instruments lives on in the new San Dimas series. Entirely hand made in the Jackson Custom Shop in Ontario, California, these instruments are built by the same craftsmen who built the first guitars in the late seventies.

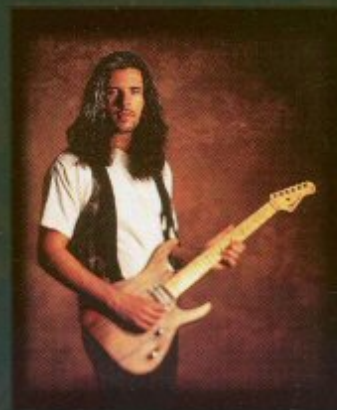


With the San Dimas Series, Charvel has gone back to where it all began . . . excellent craftsmanship, beautiful styling and the desire to make the finest instruments possible.



Billy Perry photo by Frank Forcino

Charvel  
San Dimas guitars  
are a part of  
Billy Perry and  
Alex Skolnick's sound.



Alex Skolnick photo by Jay Blakesberg

Generalvertretung:

**PEK** Professional Equipment Kübler  
Badenerstr. 808, 8048 Zürich  
Tel. 01/431 82 82 / Fax 01/431 82 83  
www.pek.ch / e-mail: pek@pek.ch



Charvel Guitar Company • P.O. Box 2344 • Fort Worth, Texas 76113 • 817-336-5114 • FAX 817-870-1271

For improvement purposes, specifications are subject to change without notice.

© 1996 International Music Corporation. All rights reserved.