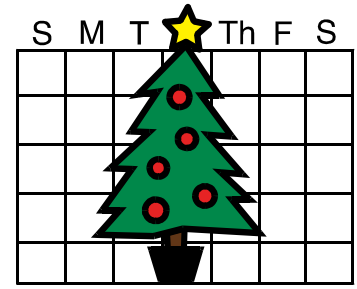




**South Manchester  
Down's Syndrome Support Group**  
*Fulfilling Potential*



December 2013

phone: 07593 542 107 email: [contact@dsmanchester.org.uk](mailto:contact@dsmanchester.org.uk) website: [dsmanchester.org.uk](http://dsmanchester.org.uk)

**Our Family Christmas party is on Saturday December 21 11.30am-2pm**

**English Martyrs Parish Centre, Alexandra Rd South Whalley Range,  
Manchester M16 8GF ([www.empc.org.uk](http://www.empc.org.uk))**



**All WELCOME—FREE entry for members, £5 non-members to  
include membership, but please book a place in advance**



**BOOK YOUR FAMILY'S PLACE NOW**

(contact Bernadette on phone: 07593 542 107, email: [contact@dsmanchester.org.uk](mailto:contact@dsmanchester.org.uk)).

**For catering etc we need to know how many adults and children are coming from each family please.**

We ask all families coming to **bring labelled wrapped gifts (value no more than £5) for each of their children.** Hand them in on the door (discreetly!) as you arrive—we'll make sure Santa gets them!

We'll be getting caterers to do some of the food but please fill in the food 'poll' for remaining items at : <http://doodle.com/szisxrd53mmzbxhr?> Please remember - any food you bring needs to be ready to serve. There will be a bar available for you to purchase drinks.

- 11.15—doors open
- 11.30-12.45 food and drinks available
- 11.30—1pm circus skills to watch and try
- 11.30—1 pm Christmas craft activities
- Raffle tickets on sale until 12.30
- Tombola 11.30-1pm

**be prepared to buy lots of tickets!**

- 1 pm raffle draw
- From 1.15 Crystal chords choir will be singing some seasonal songs.
- Santa has agreed to visit us from 1.30—2pm.



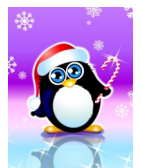
We need volunteers to:

- Be at the venue early to help set up from 10.30am
- Sell raffle tickets and get tickets ready for draw
- Tidy up at the end from 2-2.30
- Help with the crafts
- Set out the food

To volunteer, contact Bernadette on:  
phone: 07593 542 107,  
email: [contact@dsmanchester.org.uk](mailto:contact@dsmanchester.org.uk)

**Tombola Prizes**

We need lots of good quality new or nearly new toys and games for the Christmas tombola. If you have any to donate, please contact Cath at: [tombola@dsmanchester.org.uk](mailto:tombola@dsmanchester.org.uk) or bring them to Chatterbox on December 14. **We need tombola prizes in advance of the party so they can be ticketed.**

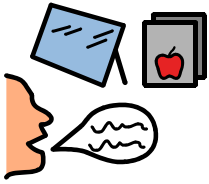


**Raffle Prizes**

If you have any to donate, please contact Naomi at: [admin@dsmanchester.org.uk](mailto:admin@dsmanchester.org.uk) or bring them to Chatterbox on December 14. Naomi is going to make a couple of hampers—luxury food or bath items needed for these please. **We need all items in advance of the party—please donate by December 14.**

phone: 07593 542 107, email: [contact@dsmanchester.org.uk](mailto:contact@dsmanchester.org.uk) website: [dsmanchester.org.uk](http://dsmanchester.org.uk)

## Chatterbox Club



Heaton Moor Evangelical church, Green Lane, Heaton Moor SK4 3LH

A family social occasion providing the opportunity for children to meet with others of a similar age for group speech therapy. Sessions are delivered by qualified speech and language therapists who have specialist training in the specific communication needs of people who have Down's syndrome.

**If you do not enroll for the SLT sessions, you are welcome to join us for all the other activities. Feel free to pop a donation in the box at the refreshments counter towards the cost of running the club.**

We have arts and craft activities, sing and sign and yoga. We are sad to announce that Danka Chitryn is no longer able to deliver our arts and crafts but we are delighted that Katherine Long from Venture Arts will be delivering art activities for children to enjoy.

**Dates:** Dec 14<sup>th</sup>

**Themes:** December-Christmas.

**Sing and Sign Times:** 10:15-10:35-2 and under; 10:40-11:00-3-5's; 11:05-11:25-over 5's

**Yoga:** 11:30-12:15

Many thanks to BAPS Charities for Sponsoring our November and December Chatterbox Clubs

**Would you like to enrol your child for Chatterbox speech and language sessions January—June 2014 ?**

Provisional dates: January 25, February 22, March 22, April 26, May 17, June 28

**Contact:** [enrol@dsmanchester.org.uk](mailto:enrol@dsmanchester.org.uk)

## Funding News

A huge thanks to the following for their generous donations:

Mr and Mrs Walley who raised £222 in donations for their 50th wedding anniversary—Mia and Archie's grandparents.

Mr and Mrs Hynes who donated £100, in lieu of presents as above.

Kim and John Goodrich who donated £80 in lieu of presents for the golden wedding anniversary of Joe and Brenda Johnson—all Theo and Isaac's grandparents.

A & J Pooler who donated £10, also in lieu of presents as above.

## SMDSSG Training 2013

Supporting Social Development and Behaviour: November 29 with Gill Bird from the DSA

Please see the outline and booking form sent out previously or contact Bernadette

phone: 07593 542 107, email: [contact@dsmanchester.org.uk](mailto:contact@dsmanchester.org.uk)

**If you want to attend training, please book ASAP.**

**It is important that schools get details of this training. If you are reluctant to take information into your child's school, please let us have the school's email or postal address and we'll send the information.**



You can now find us on Facebook at <http://www.facebook.com/SMDSSG>  
Come and like the page and keep up to date with what the group is doing.

## One of our members on the television



Dominic Tarpey fulfilled an ambition last week when he appeared on television. He was on Daybreak, on ITV last Wednesday morning, talking about how important Francis House is to him. Dominic has been going to Francis House since he was 3 years old, and it is like a second home to him. Daybreak are running a Christmas Appeal to help Children's hospices across the country. Dominic appeared live from 'Roy's Rolls' on the Coronation Street set, and he got to meet members of the cast, and had his photo taken at the Rover's Return and at Rita's Kabin. He had a great day, and is now more determined than ever to be a famous actor one day!

## SMDSSG Member wins Best New Blog

SMDSSG member Tom Bachofner recently picked up a national award for his blog about his daughter Rosie who was born with DS and a complete AVSD in March 2011. Tom's blog, 'The Future's Rosie' won 'Best New Blog' at the Mad Blog Awards after being shortlisted to five finalists from some 100,000 nominations. Upon receiving the award Tom said, "I must give a huge thank you to every single person who nominated and voted for The Future's Rosie. Collectively we have managed to help raise more positive awareness for Down's syndrome. I often feel like TFR is more than just my blog I feel it belongs to everyone who reads it and shares my journey with Rosie with genuine interest. I have been given so many words of encouragement and support it's really quite overwhelming at times. Those that read and comment on the posts have helped me a great deal when I've felt low by encouraging me to keep going. I really must share this award with all these people."



Toms blog can be found here: <http://www.thefuturesrosie.com>

## Ongoing activities

**Macclesfield Saturday Club\*** is a monthly youth group for children with Down's syndrome from the Macclesfield area. At Elim Church, Parsonage St, Macclesfield, Cheshire East SK11 7GY from 2:30-4:30pm. Join the Saturday Club Facebook group <http://www.facebook.com/groups/saturdayclubmacc/> for updates on future Saturday Clubs. Club attendees enjoy organised activities that have included dance, games, indoor sports, crafts, circus skills and music. Refreshments are available for a small donation. Siblings are welcome! Next Saturday Club is December 7th. \*\*Parents/carers are required to stay with their children \*\* Contact: Heidi - 07904301059, Anna - 07920851771, Dawn - 07938924527

**DSActive football sessions with Moorside Rangers\*** Victoria Lane (Beechfarm Playing Fields) Swinton Manchester M27 9LF. Sunday mornings every fortnight 11am-1pm. <http://www.dsactive.org/teams/moorside-rangers-dsactive/> Contact Ian Clarke at [clarkey@parklife.fsworld.co.uk](mailto:clarkey@parklife.fsworld.co.uk).

**EST Donkey sanctuary Manchester, Green Fold Abbey Hey Manchester\*** M18 8RJ [www.elisabethsvendsentrust.org.uk/view/manchester](http://www.elisabethsvendsentrust.org.uk/view/manchester). For children with additional needs and their families. Rides are booked in as you arrive from 10am—1pm. **Saturday clubs usually third Saturday of the month** Tel 0161 301 4051. Relax over a cup of tea/coffee, bring a picnic or have a snack and meet other parents, carers and supporters. **Call for holiday riding dates.**

**Simply Cycling\*** No need to pre-book, just drop by, cycling for all abilities and opportunity to learn cycle skills with qualified teachers. £2 per rider. **Please call the numbers given in advance for details.**

**Trafford Wheelers at Longford Park Athletic Stadium** Ryebank Road, Stretford (Sat Nav M21 9LJ)

**Monday:** 9.30 – 12 noon , **Thursday – SPECIAL RIDE OUT – PHONE TO BOOK**

**Friday:** 9.30 – 12 noon **Session closed here on 12, 19 and 26 July so join us at Wythenshawe.**

**Sunday:** 1.00 – 3.00 pm **Session closed here on 21, 28 July and 11 August**

For more information call Helen on: **07871 621778 email:** [helenhines68@hotmail.co.uk](mailto:helenhines68@hotmail.co.uk)

**Wythenshawe Wheelers at Wythenshawe Park Athletics Track**

Wythenshawe Road, (Sat Nav. M23 OPH)

**Monday:** 9.30 – 12 noon **Tuesday:** 9.30 – 3.00 pm **Weds:** 9.30 – 12 noon

**Thursday – SPECIAL RIDE OUT – PHONE TO BOOK**

**Friday:** 9.30 – 3.00 pm

**Sat:** 1.00 – 3.00 pm

For more information please call Sue on: 07753 428937 **e.mail:** [sueblaylock2708@aol.com](mailto:sueblaylock2708@aol.com)

<http://www.wythenshawe-wheelers.org/>

**CADS (Children's able and disabled sports) Clubs\*** [www.seashelltrust.org.uk/cads](http://www.seashelltrust.org.uk/cads)

Please see attached flyer

**Manchester Specialist Resource Team groups\*** Stay and play sessions for young children with disabilities are held throughout the city. For more information about any of these groups contact Donna Griffin on 219 2648

**The Friendship Club\*** for school age children who have Down's syndrome, their siblings and friends to socialise together. Interested? Contact Caroline Sheehan on 0161-925-6153.

**L'Arche prayer evenings\*** A chance for people with learning disabilities, their friends, carers, family and friends to pray and reflect together. Stay for a cup of tea and biscuits afterwards! Contact: Kevin on 07714 397333 or at [kevin.coogan@larche.org.uk](mailto:kevin.coogan@larche.org.uk).

**\*Please note: not run by the South Manchester Down Syndrome Support Group.**

**For information only—we are not responsible for changes to date, time or venue.**

**Please use the contact information supplied to confirm details and to ask any questions.**

## Other support groups around Greater Manchester

### **Tameside and Glossop Down's syndrome support group**

Contact: Vicky on 07792827899 or email [victoriamassey@hotmail.com](mailto:victoriamassey@hotmail.com).

### **Bury Down's Syndrome Support Group**

Website: [dsbury.org.uk](http://dsbury.org.uk) email: [contact@dsbury.org.uk](mailto:contact@dsbury.org.uk) Tel: 07796 765361 (Jackie) or Facebook

### **Bolton Smiley Faces**

website: [boltonsmileyfaces.org.uk](http://boltonsmileyfaces.org.uk) Contact [chair@boltonsmileyfaces.org.uk](mailto:chair@boltonsmileyfaces.org.uk)

### **Cheshire Down's syndrome support group**

Website: [www.cheshiredownssyndrome.com](http://www.cheshiredownssyndrome.com) Tel: 07518 590300

### **Down's Syndrome Family & Carer's Group, Lancaster**

Contact: Liz Fawcett [lancasterdsgroup@hotmail.co.uk](mailto:lancasterdsgroup@hotmail.co.uk) or 01524 64132.

### **West Pennine Down's syndrome support group– new details**

Website: [www.dswestpennine.co.uk](http://www.dswestpennine.co.uk) email: [dswestpennine@hotmail.co.uk](mailto:dswestpennine@hotmail.co.uk)

General Enquiries: Tel: 07842555725 New Parent Helpline: Tel: 07842534819.

### **East Lancs Down's Syndrome Support Group**

Website: [www.eldsbg.co.uk](http://www.eldsbg.co.uk) email: [eastlancsdsg@aol.co.uk](mailto:eastlancsdsg@aol.co.uk) Telephone: 07766305320

## **The Cinema Exhibitors' Association Card**

This is a national card that can be used to verify that the holder is entitled to one free ticket for a person accompanying them to the cinema. Terms and Conditions of use apply which can be downloaded at the CEA website: [www.ceacard.co.uk](http://www.ceacard.co.uk)

The card is valid for 1 year from the date of issue for cards issued since March 2009.

Printed application forms are available from cinemas across the UK supporting this card.

You can download an application form from the website above to print out and fill in.

They are unable to provide application forms by post.

To apply for the card you will need submit proof to show that you meet one or more of the following criteria:

- a) Be in receipt of Disability Living Allowance, Attendance Allowance, Personal Independence Payment, or Armed Forces Independence Payment.
- b) Be a registered blind person.

You will also need to supply a passport-sized photo with your application to appear on the card.

A processing fee of £5.50 is chargeable per card. This is to be sent along with the completed application.

### **Sharing Information .....**

If you know of any events, information , training etc that would be of interest to other members of our support group, please share them with us so that the information can go in the newsletter:  
[contact@dsmanchester.org.uk](mailto:contact@dsmanchester.org.uk) Thanks

## From the DSA Website

### **New SEN Code of Practice – still time to have your say**

By Lesley Black, Information Officer (Education), Down's Syndrome Association

As part of the government's reforms to the special educational needs system in England, last month saw the publication of a draft code of practice for public consultation. This will replace the existing code of practice dating from 2001.

#### **Why is the code of practice important?**

The code of practice puts the flesh on the bare bones of the legislation. It both states the law on SEN and also gives guidance as to how the law should be applied in practice. It is intended to be accessible and usable by a wide range of bodies, including schools, colleges, early years settings, health commissioners and local authorities. The code is statutory guidance, which means that it must not be ignored. Parents and parent support organisations often refer to the existing code as the 'Bible' that they quote to schools and LAs to ensure children's rights are upheld. For the new code to do the same, we need to make sure that the government gets it right.

#### **What's in the draft code?**

At 174 pages the code is not a quick bedtime read. Its scope is wider than the existing code as it covers children and young people aged 0-25, including further education and training providers for the first time. It has sections on:

- A family centred system
- Working together across education, health and care
- The local offer
- Early years, schools and colleges
- Assessments and Education, Health and Care Plans (EHCPs)
- Children and young people in specific circumstances
- Resolving disputes

As the code reflects the legislation, concerns about the Children and Families Bill also extend to the code, in particular the lack of accountability on the local offer, the fact that social care is not an enforceable part of EHCPs and there is no single route of appeal.

There are also some big changes in the guidance for schools and other education providers. Early years settings, schools and colleges are all covered in a single chapter. For children without EHCPs, the existing school action and school action plus categories have gone, as have IEPs. Far more leeway is given to schools to devise their own systems for assessment and planning and there is no guidance as to the level of need that might trigger a statutory assessment.

The chapter on assessments and plans covers the ground of three chapters of the current code on assessments, statements and reviews. Although the outline of an EHCP is given, there is not a standard statutory national format.

#### **How to respond and more information**

The DSA will be responding to the consultation as part of our membership of the Special Educational Consortium and also putting in our own submission. It is also important for parents, carers and supporters to respond directly to ensure their voice is heard.

**The deadline for responses is Monday 9<sup>th</sup> December.**

You can **download the draft code and the consultation document** from the DfE website <https://www.gov.uk/government/consultations/special-educational-needs-sen-code-of-practice-and-regulations>

There is a **parallel consultation for children and young people**. The Council for Disabled Children has prepared two guides, one for young people age 15 and under and one for ages 16-25 <http://www.councilfordisabledchildren.org.uk/what-we-do/policy/children-and-families-bill/key-documents-on-the-children-and-families-bill/young-peoples-guides-on-draft-code-of-practice>

Also look out for any information or consultation events in your local area. These might be organised by a local support group, parent partnership or parent carer forum.

If you want detailed **information on how far current legal rights are preserved in the new code and associated regulations**, IPSEA have produced a useful comparison document <http://www.ipsea.org.uk/news/changes-to-sen-law/draft-sen-regulations-and-code-of-practice-analysis.aspx>

## SMDSSG Membership

Have you completed one of our membership forms ? **If not, please fill one in ASAP**

As a member, you can:

- Attend social events like Run Of The Mill, Christmas parties etc
- Take advantage of discounted training fees
- Vote at our AGM
- Join the committee
- Enrol for Chatterbox SLT sessions from September 2013

FEE: Per family £5 / £3 concessions

Forms can be downloaded at: [dsmanchester.org.uk](http://dsmanchester.org.uk)

**Dark Horse Theatre Productions: Sing Something Simple**  
**Lowry Theatre 3<sup>rd</sup> and 4<sup>th</sup> April see attached flyers**

## Christmas Events You may enjoy .....

**Jump space Christmas party**—see attached flyer



### **The EST Donkey Sanctuary**

**An evening of carols and Christmas cheer.**

December 4, 6:30pm - 8:00pm

With a Nativity starring our lovely riders and plenty of festive fun from our gorgeous donkeys.

Mulled wine, homemade soup and mince pies available all evening.

For more information please call our Manchester centre on 0161 301 4051



## Dates for your diary

Supporting Social Development and Behaviour	November 29
Drama Club	December 2, 9 & 16
Chatterbox	December 14
Christmas Party	December 21
Chatterbox	January 25

The views and items in this newsletter are not necessarily those of the South Manchester Down's Syndrome Support Group. Mention does not necessarily mean recommendation or support.



**South Manchester  
Down's Syndrome Support Group**  
*Fulfilling Potential*



Registered Charity  
No: 1147397



SMDSSG  
PO Box 307  
Manchester M21 3BR

**December 2013**