



General Features

- ◆ Sealed and maintenance free operation.
- ◆ Non-Spillable construction design.
- ◆ ABS containers and covers(UL94HB, UL94V-0) optional.
- ◆ Safety valve installation for explosion proof.
- ◆ High quality and high reliability.
- ◆ Exceptional deep discharge recovery performance.
- ◆ Low self discharge characteristic.
- ◆ Flexibility design for multiple install positions.



Battery Type	Valve-Regulated, Absorbed Glass Mat (AGM) Technology			
Nominal Voltage	2V			
Capacity(20°C)	20HR(25.5A, 1.8V/cell)	10HR(48.5A, 1.80V)	5HR(82.1A, 1.75V)	1HR(285.0A, 1.60V)
	510.0AH	485.0AH	410.5AH	285.0AH
Dimensions	Length	Width	Height	Total Height
	240mm(9.45inches)	175mm(6.89inches)	330mm(13.0inches)	350mm(13.8inch)
Approx Weight	Approx 28.5 kg (62.8lbs)			
Internal Resistance	Full Charged at 20°C : Approx 0.6mΩ			
Self Discharge	3% of capacity declined per month at 20°C			
Capacity affected by Temperature(10HR)	40°C	25°C	0°C	-15°C
	103%	100%	86%	65%
Charging Voltage (V)	Cycle use		Float use	
	2.4V~2.5V at 20°C. Temp. Coefficient -5mV/°C		2.25V~2.3V at 20 °C.Temp. Coefficient (-3mV/°C)	
Current	Max. Discharge Current		Initial Charging Current	
	4000A		Less than 150.0A	
Operating Temp. Range	Discharge		Charging	
	-15~50°C (5~122°F)		0~40°C (32~104°F)	
			Storage	
			-15~40°C (5~104°F)	

Constant Current Discharge (Amperes) at 20 °C (68°F)

F.V/Time	10min	15min	20min	30min	45min	1h	2h	3h	4h	5h	6h	8h	10h	20h
1.85V/cell	488.3	429.2	379.9	317.5	257.9	210.5	142.6	109.0	87.8	75.2	66.8	54.2	46.3	24.6
1.80V/cell	571.4	489.1	425.9	348.9	277.4	224.3	150.0	118.1	90.8	78.2	69.7	56.8	48.5	25.5
1.75V/cell	654.8	553.4	471.9	379.5	300.2	241.3	159.1	120.0	95.9	82.1	73.0	58.3	49.5	25.8
1.70V/cell	740.2	611.6	519.0	412.4	320.7	255.5	168.0	125.3	99.8	85.4	75.6	60.1	50.7	26.3
1.65V/cell	791.3	650.7	548.6	432.1	333.3	265.4	173.5	129.3	102.8	87.7	77.0	61.2	51.5	26.8
1.60V/cell	896.2	731.4	611.6	472.6	360.6	285.0	182.2	134.7	107.2	91.8	80.3	63.5	53.2	27.6

Constant Power Discharge (Watts) at 20 °C (68°F)

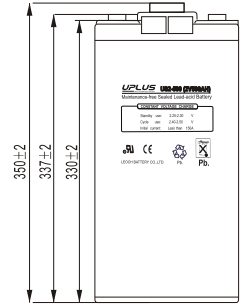
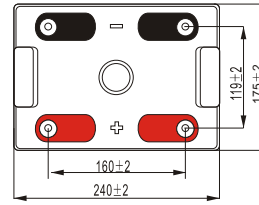
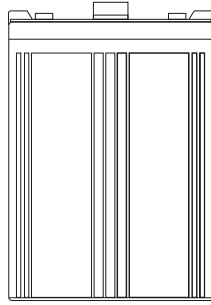
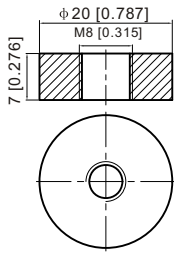
F.V/Time	10min	15min	20min	30min	45min	1h	2h	3h	4h	5h	6h	8h	10h	20h
1.85V/cell	906.8	805.2	720.0	608.4	498.3	408.2	278.3	213.5	172.6	148.2	132.1	107.6	92.1	48.9
1.80V/cell	1048.8	905.3	795.2	658.3	531.8	432.5	290.9	230.0	177.6	153.5	137.1	112.4	96.3	50.6
1.75V/cell	1182.7	1011.7	872.8	710.2	570.1	463.3	307.4	232.9	186.8	160.4	143.2	115.0	98.1	51.2
1.70V/cell	1306.8	1102.7	952.7	767.5	606.8	488.9	323.9	242.7	194.1	166.6	148.1	118.6	100.5	52.3
1.65V/cell	1384.4	1164.3	999.5	797.6	625.0	504.3	332.6	249.3	199.2	170.6	150.3	120.4	101.9	53.1
1.60V/cell	1532.3	1287.2	1102.3	866.4	672.5	538.7	347.5	258.7	206.9	178.0	156.4	124.7	105.0	54.6



Dimensions

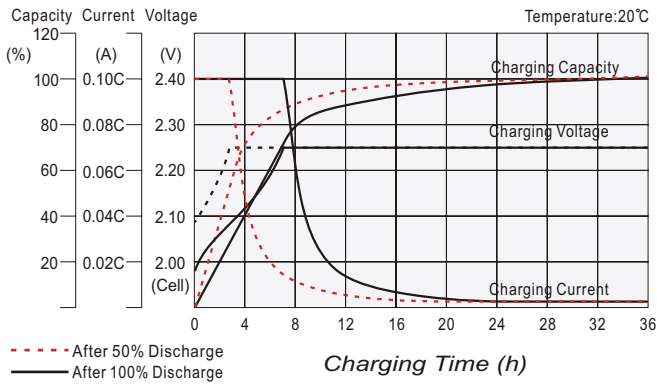
T11 Terminal

Unit: mm [inches]

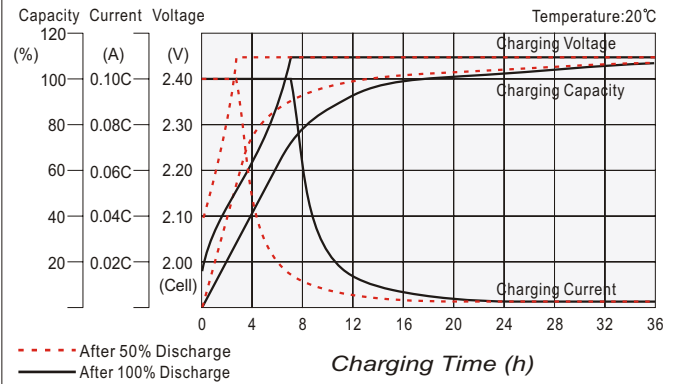


Torque: 11~14.7N*M

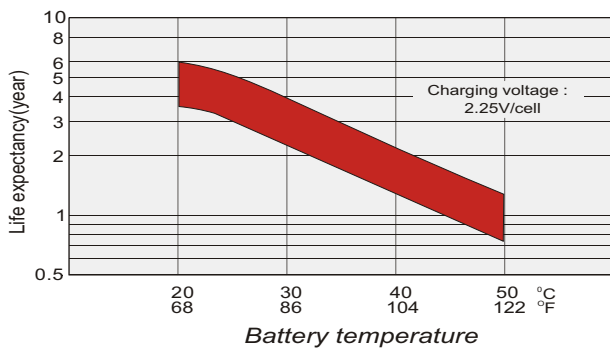
Float charging characteristics



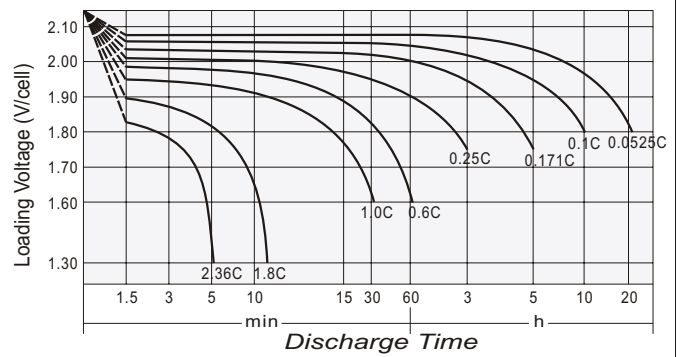
Cycle use charging characteristics



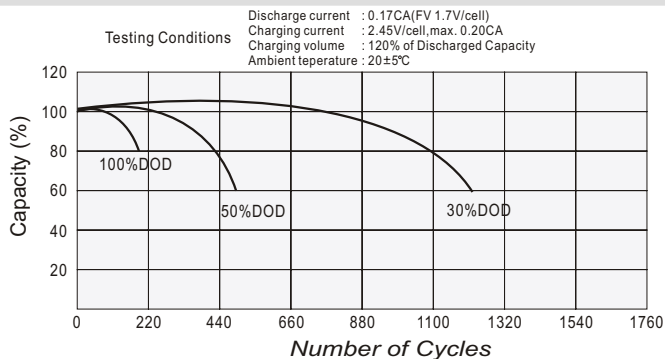
Effect of Temperature on Long Term Float Life



Discharge characteristics



Cycle Life in Relation to Depth of Discharge



Self Discharge Characteristics

