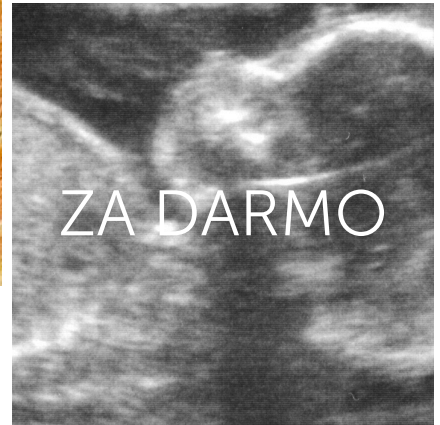
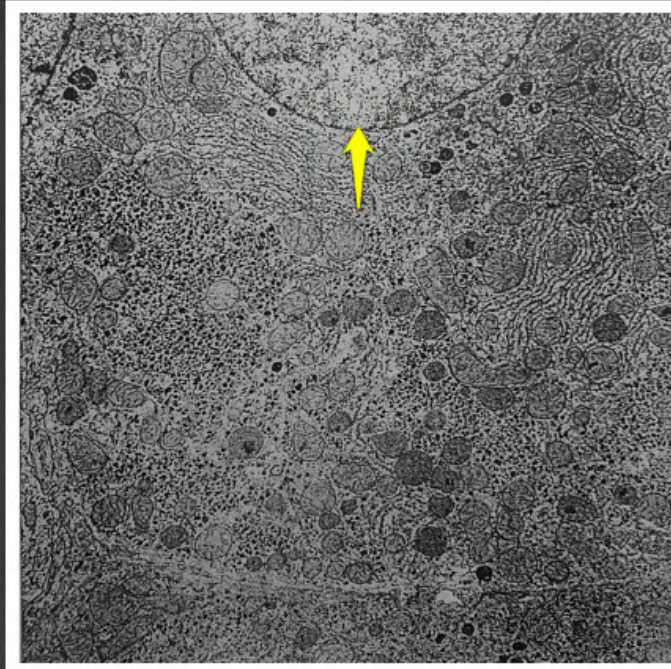




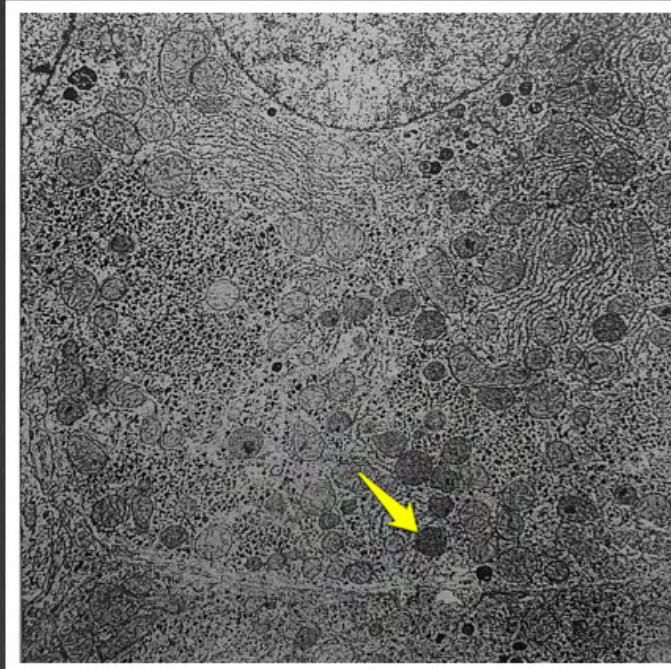
Histowuzetka: elektronogramy



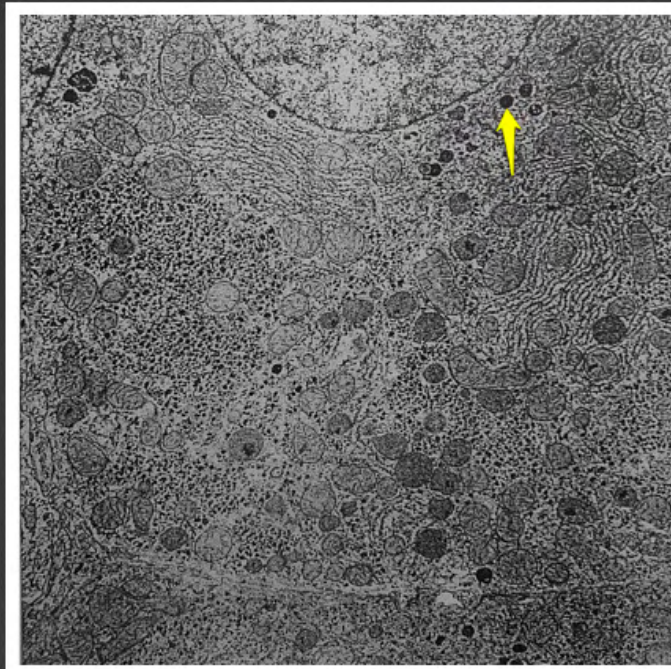
www.wuzetki.pl



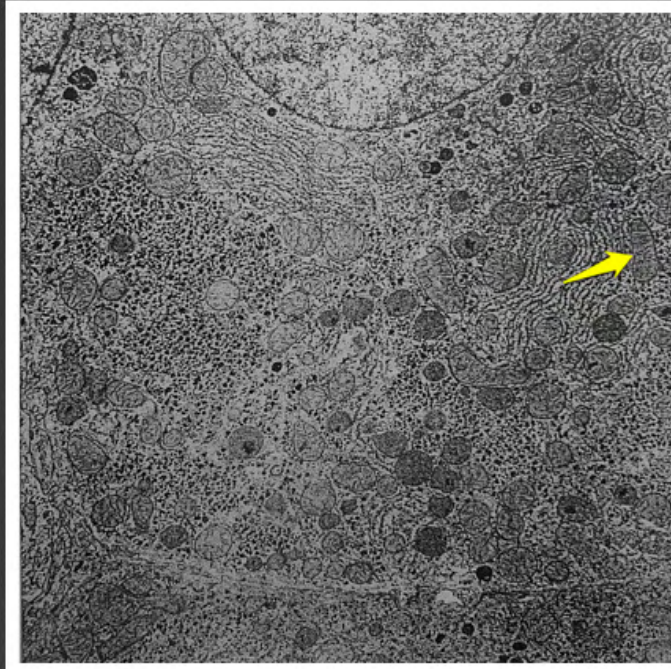
jądro komórkowe



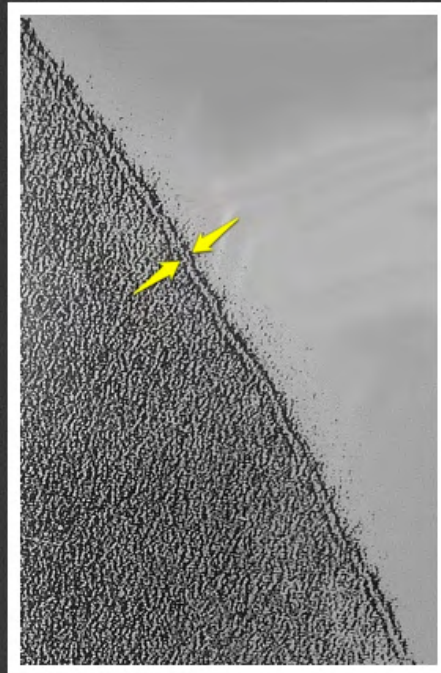
peroksysom



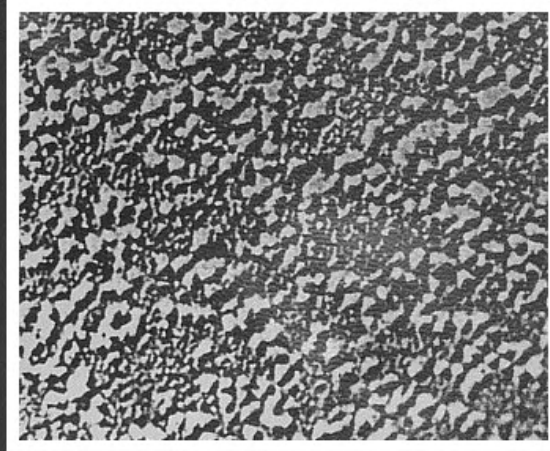
lizosom



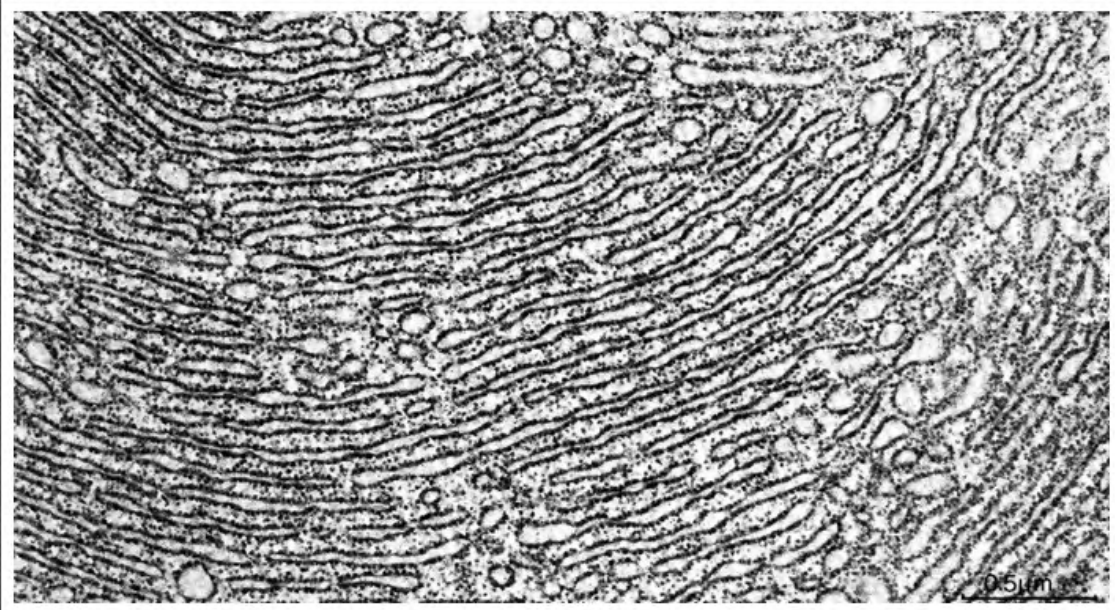
mitochondrium



błona komórkowa (skrawek)



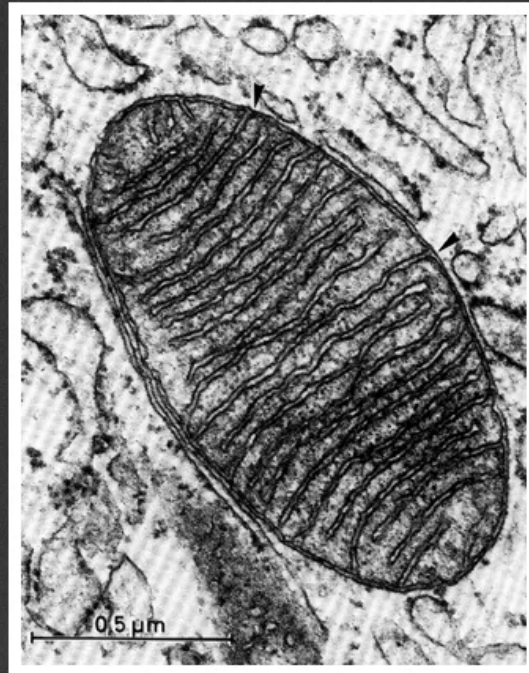
błona komórkowa (metoda mrożenia
i łamania)



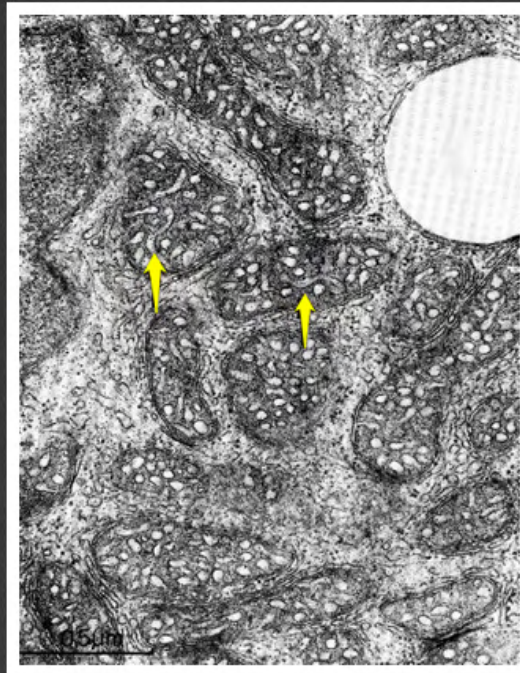
szorstka siateczka
śródpłazmatyczna



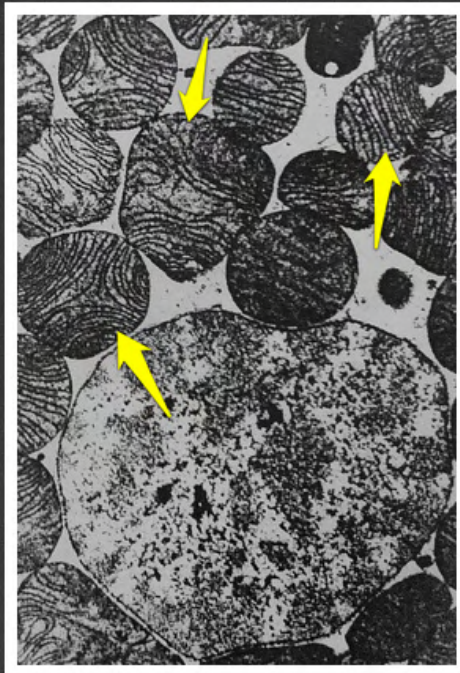
szorstka siateczka
śródpłazmatyczna



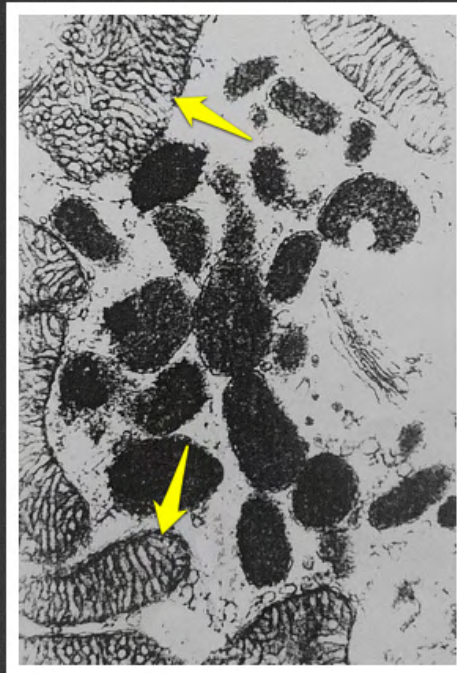
mitochondrium blaszkowate



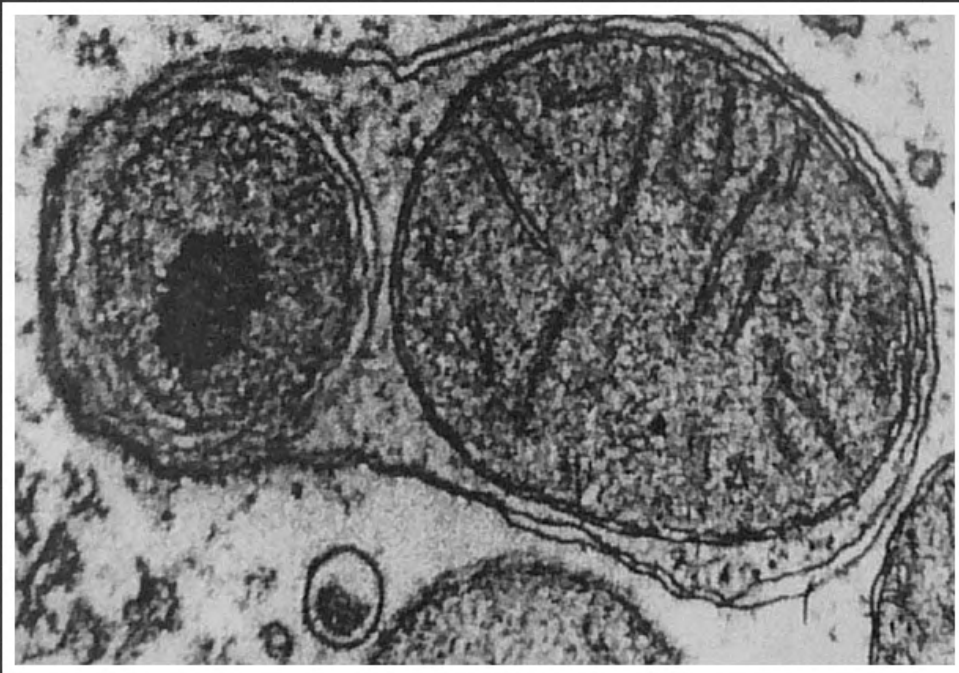
mitochondria tubularne



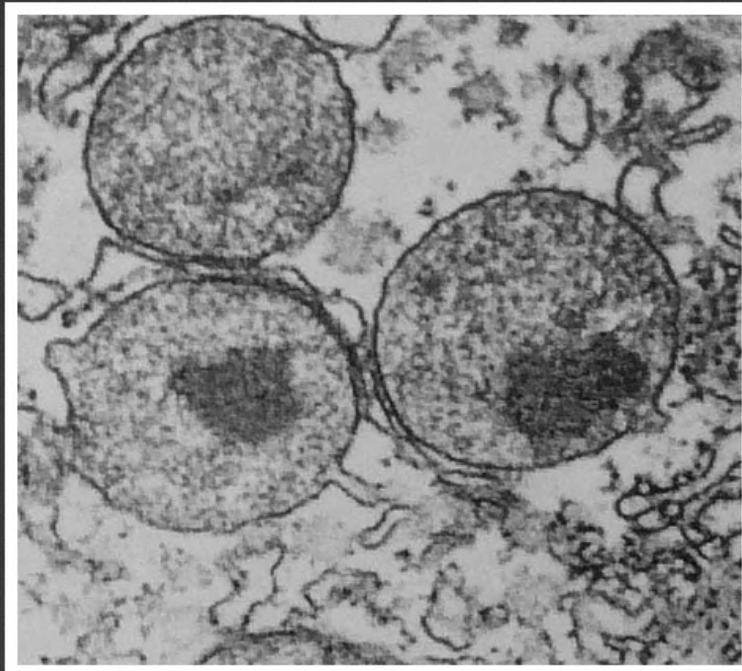
mitochondria blaszkowate



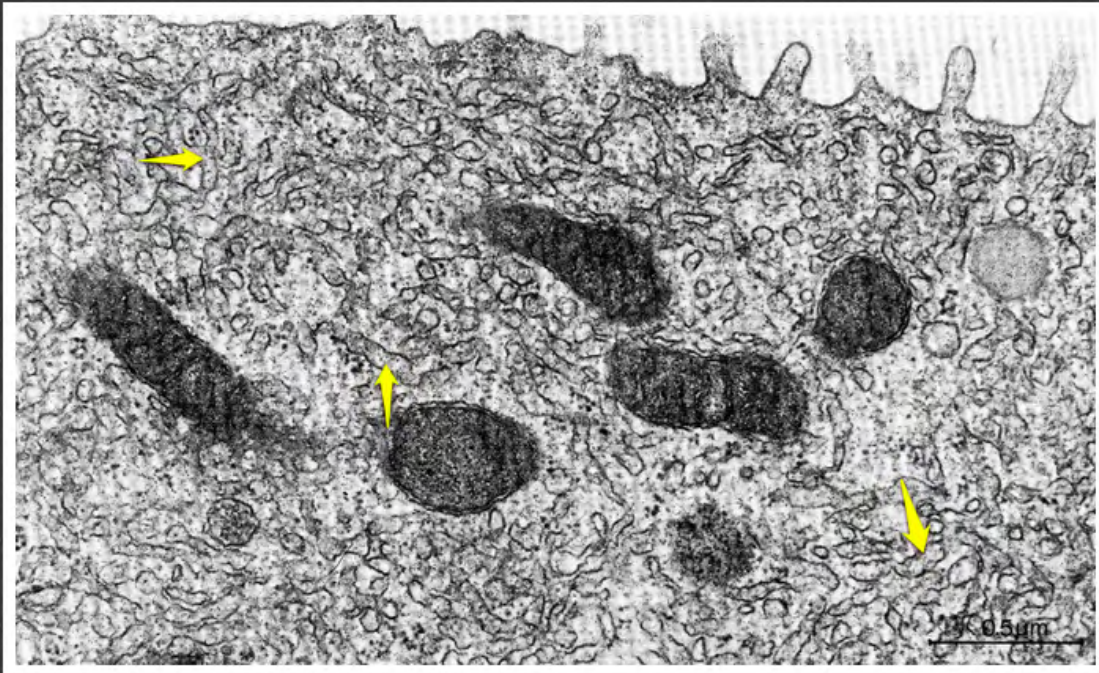
mitochondria tubularne



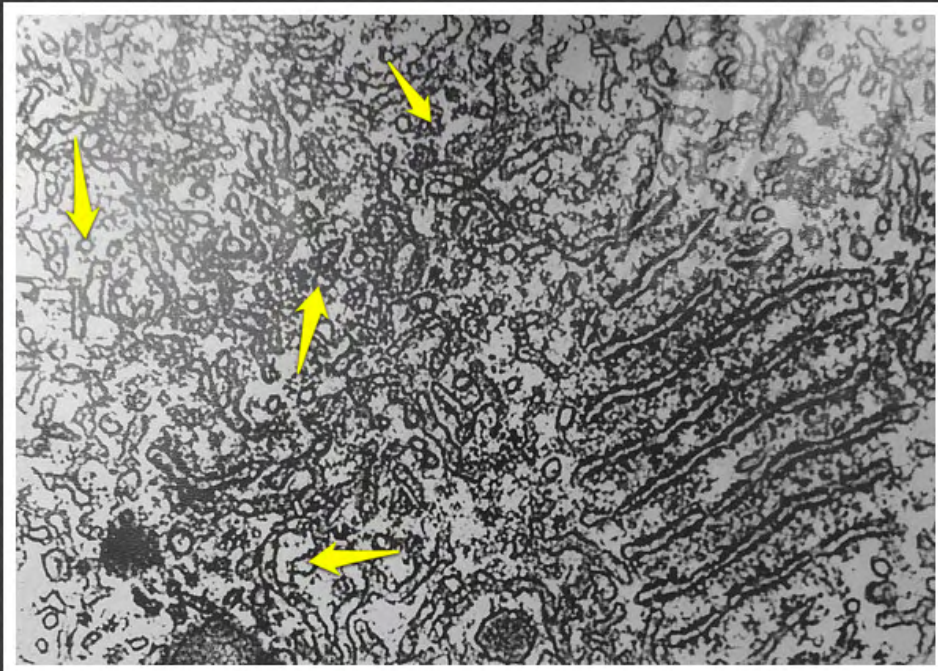
autofagosom



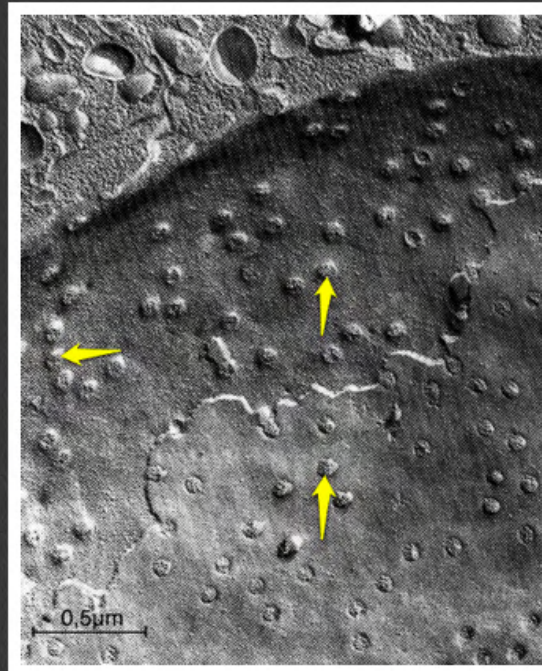
peroksysomy



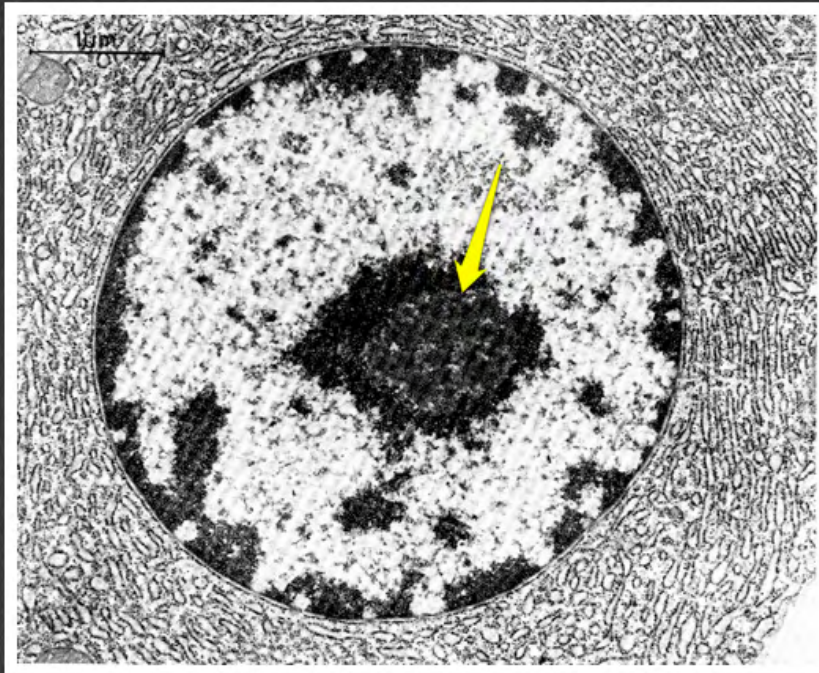
gładka siateczka śródplazmatyczna



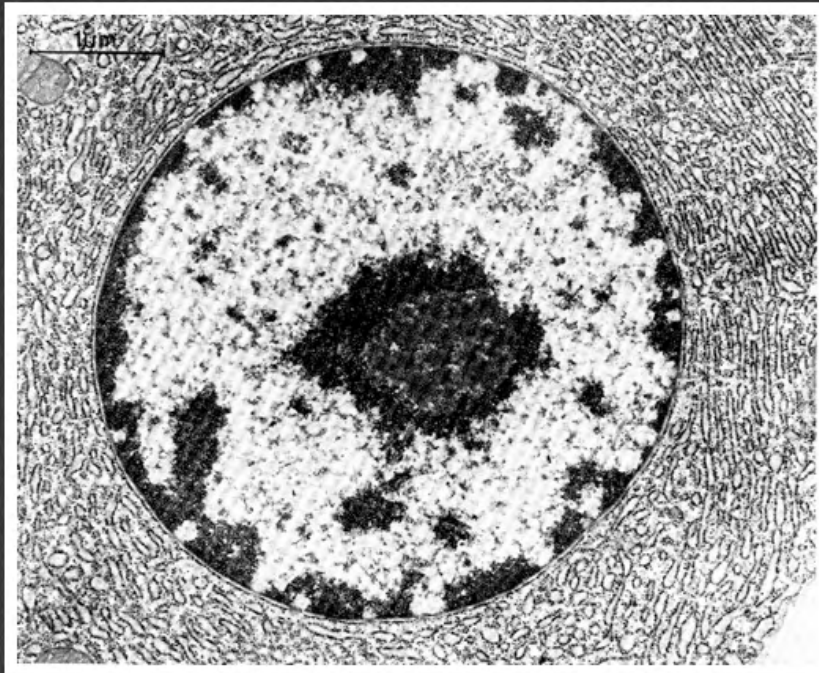
gładka siateczka śródplazmatyczna



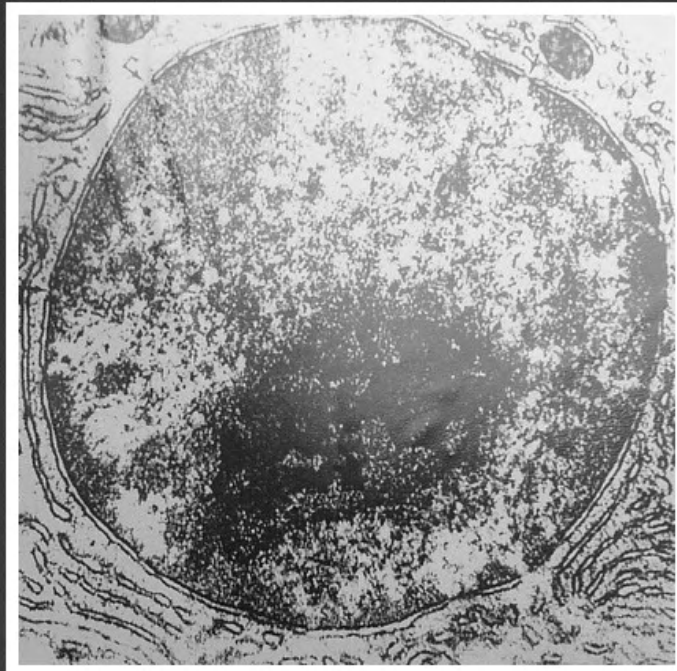
pory w otoczce jądrowej



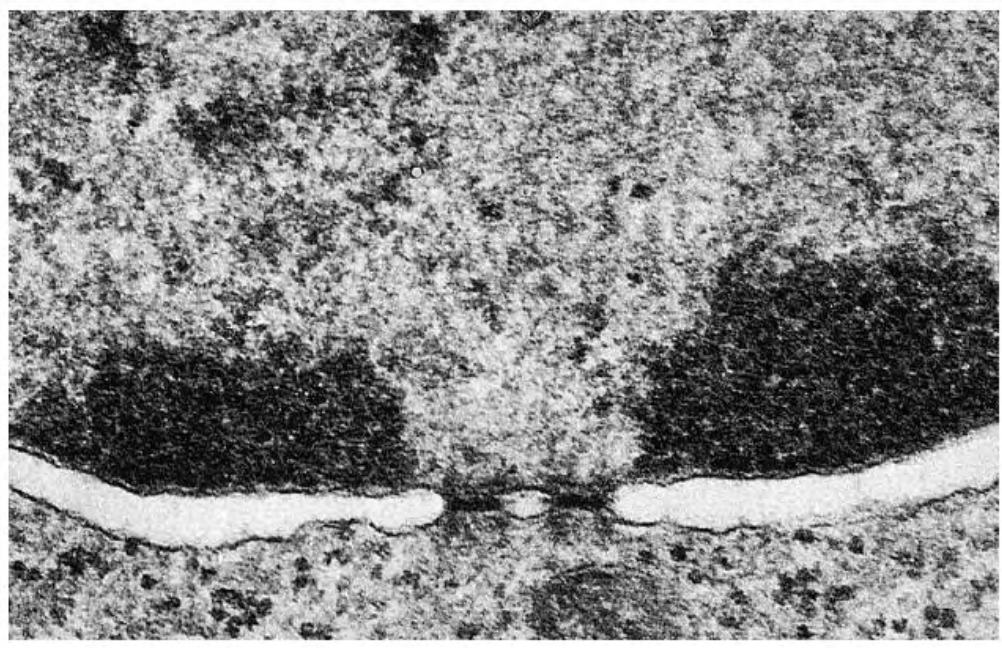
jąderko



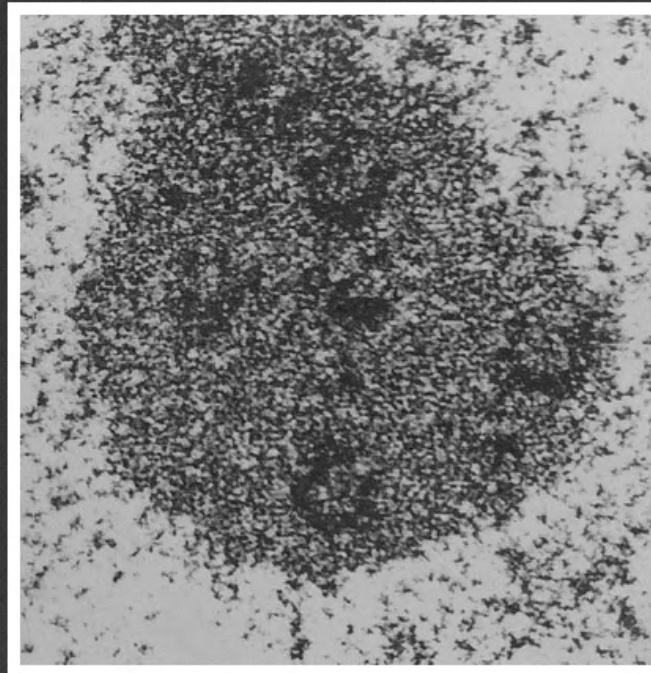
jądro komórkowe



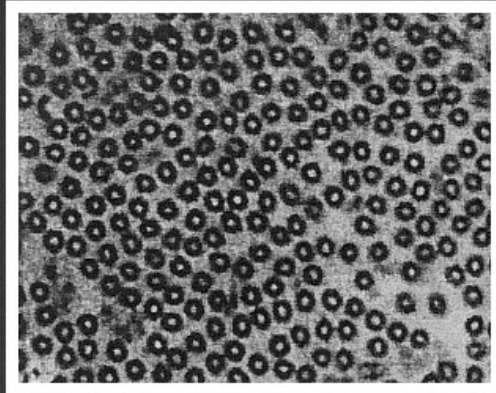
jądro komórkowe



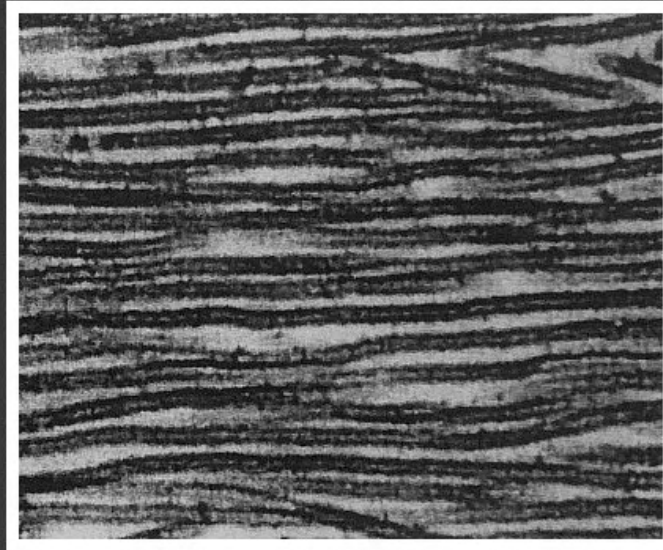
por w otoczce jądrowej



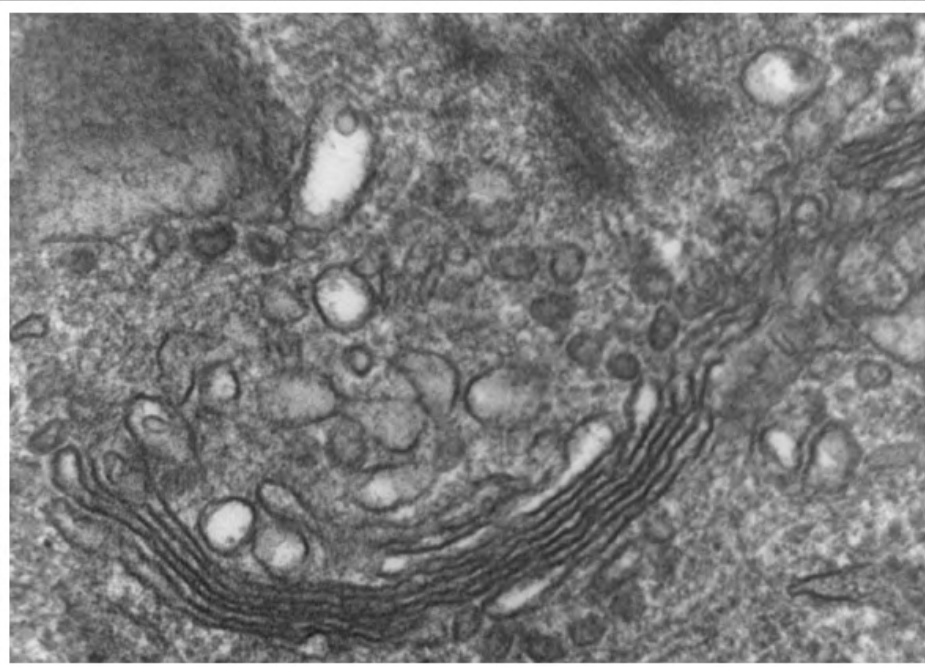
jąderko



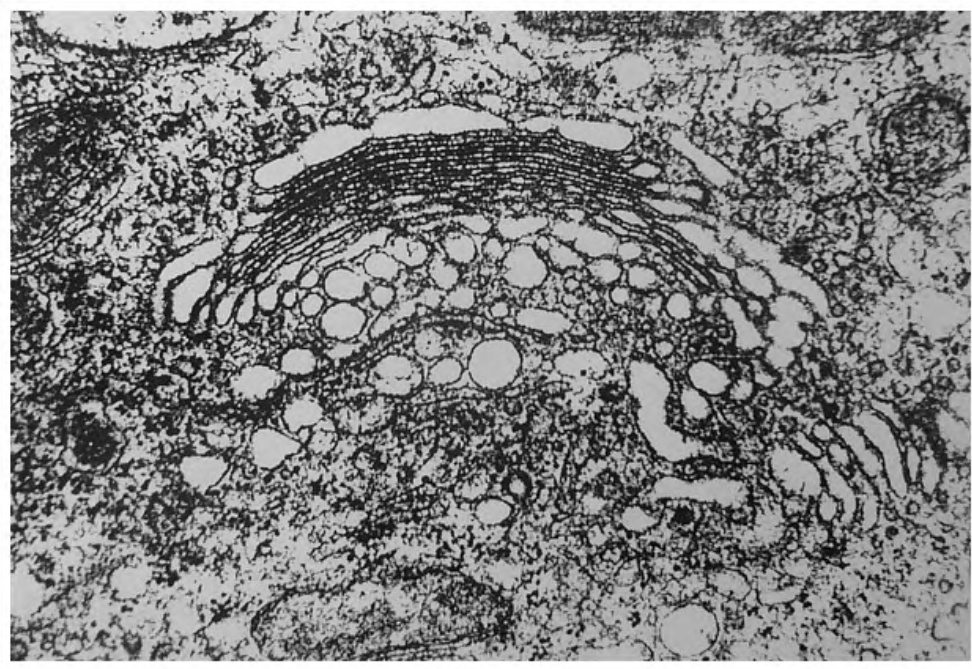
mikrotubule



mikrotubule



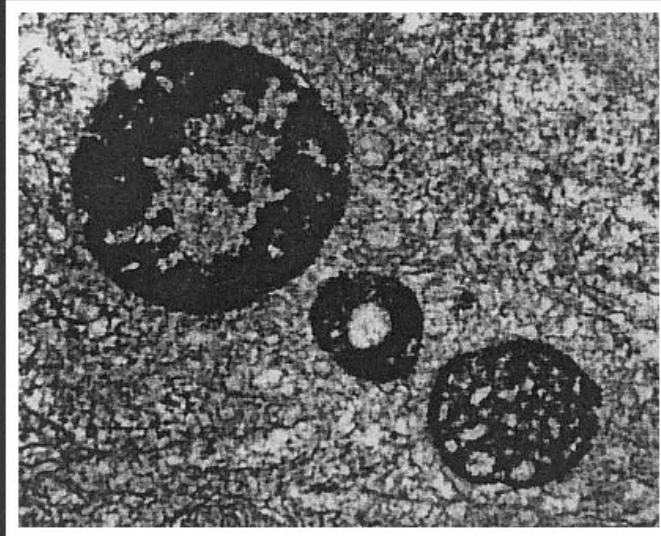
diktiosom



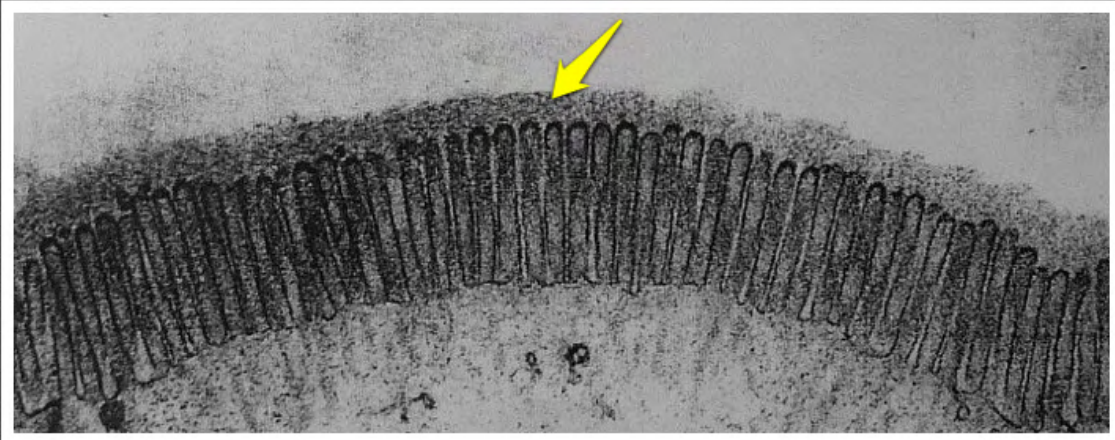
diktiosom



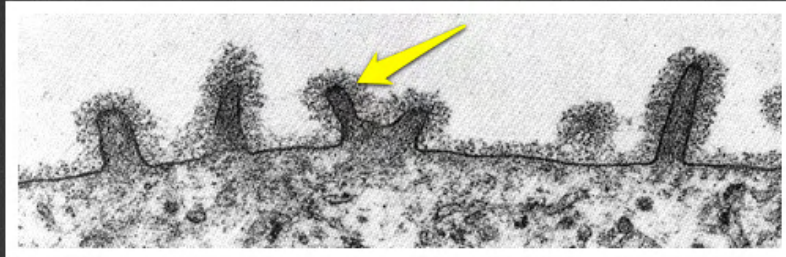
lizosomy



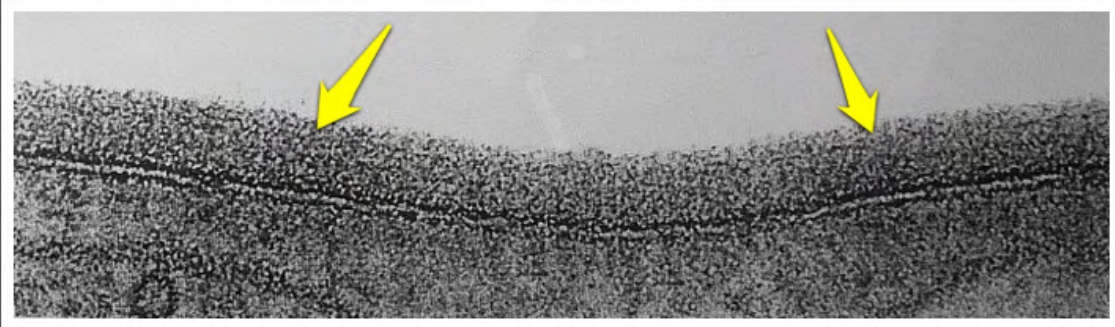
lizosomy



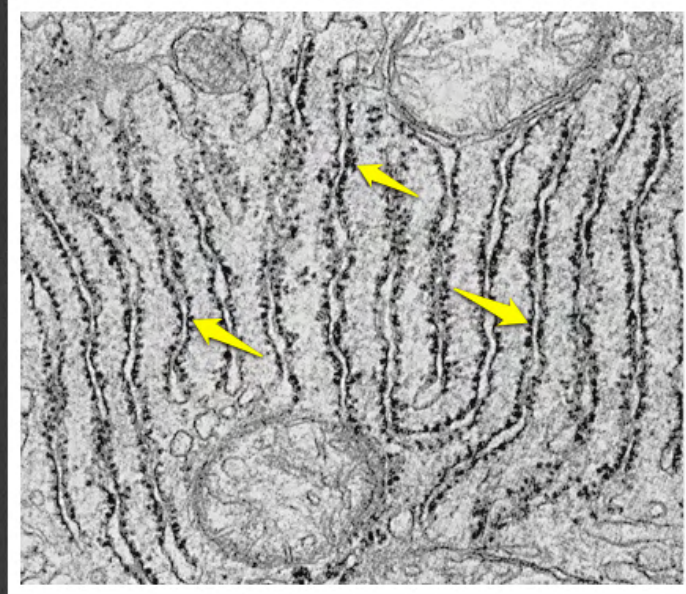
glikokaliks



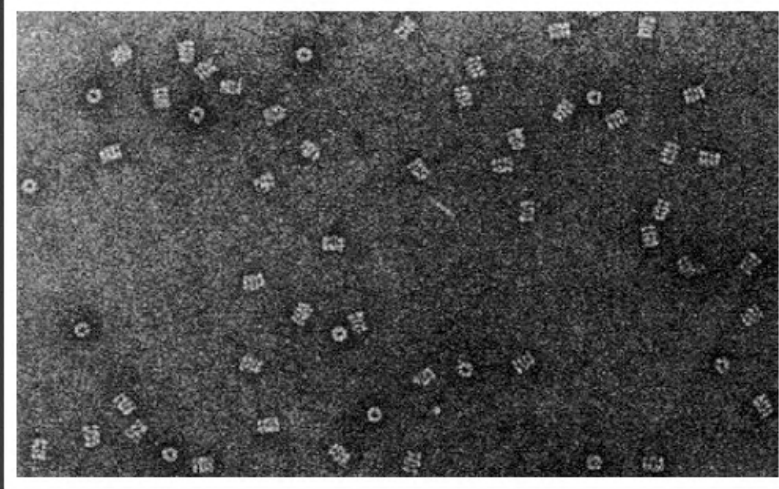
glikokaliks



glikokaliks



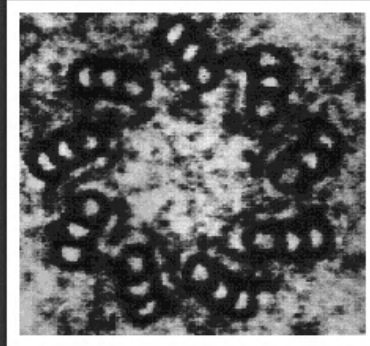
rybosomy na szorstkiej siateczce
śródpłazmatycznej



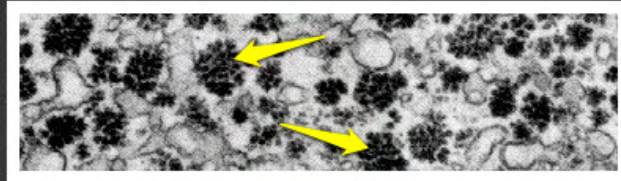
proteasomy



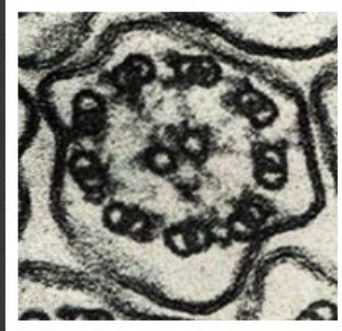
lizosom



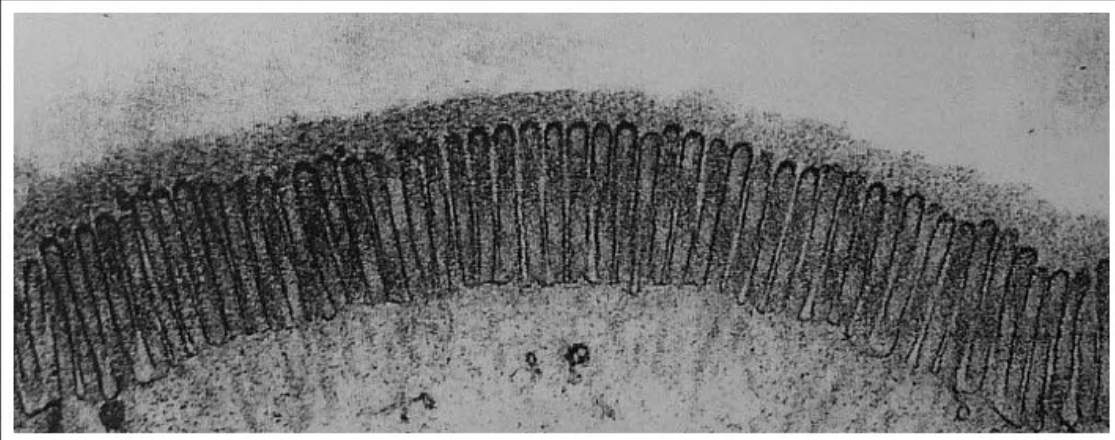
przekrój przez centriolę



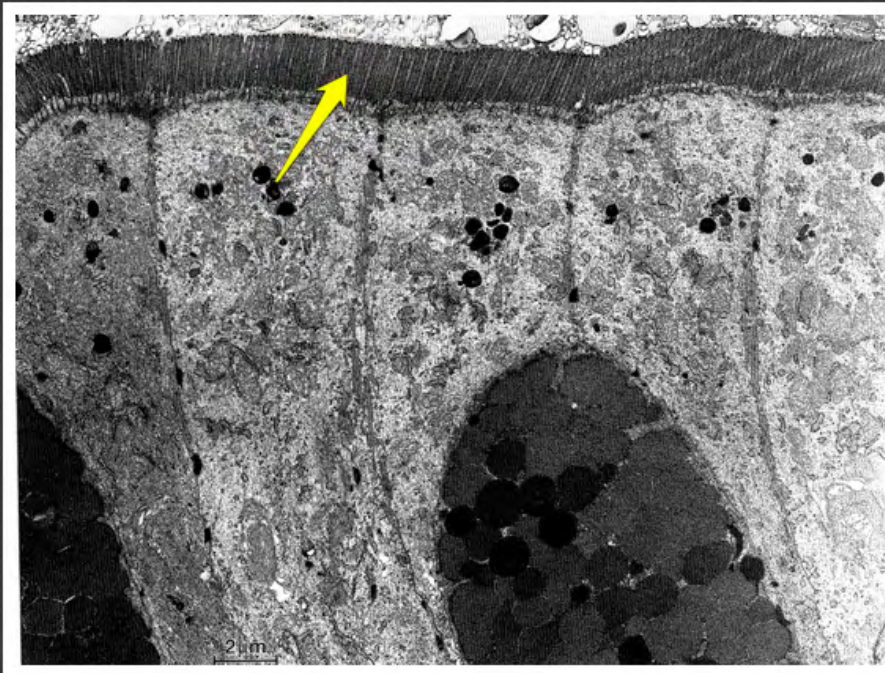
rozety glikogenu



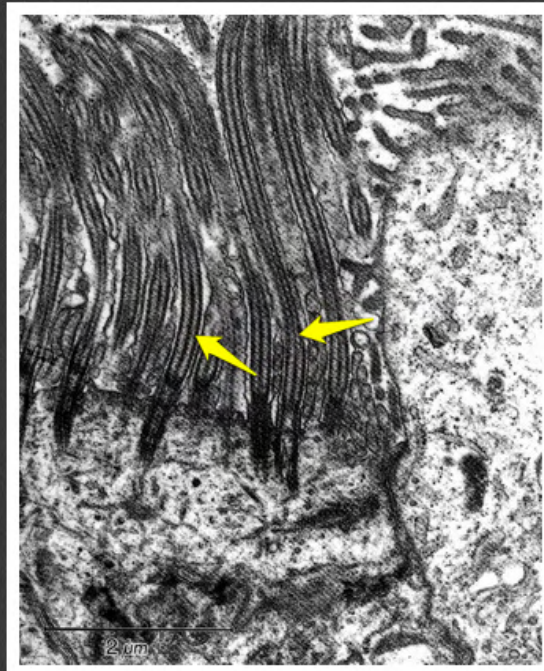
przekrój przez łodygę migawki



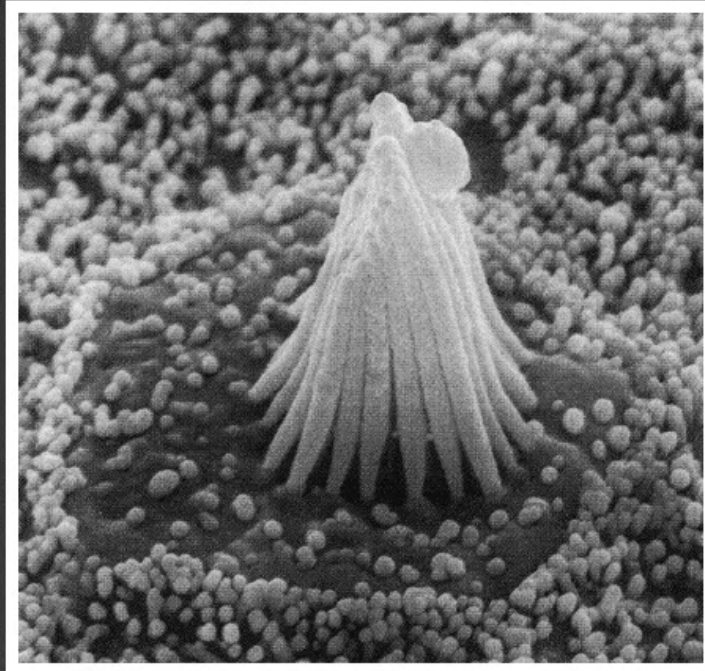
brzeżek szczoteczkowy



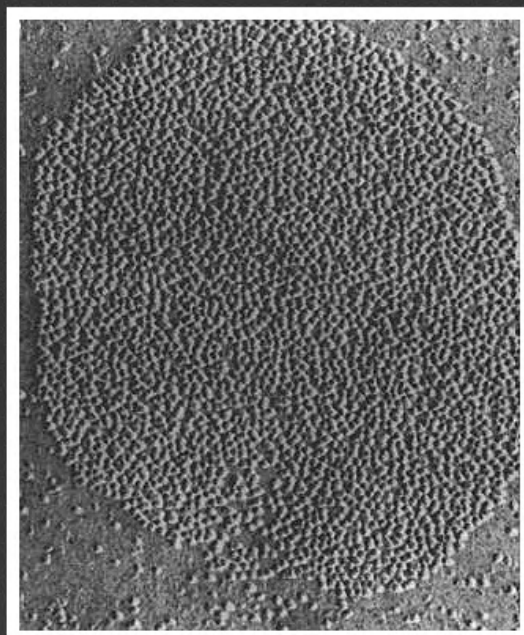
brzeżek szczoteczkowy



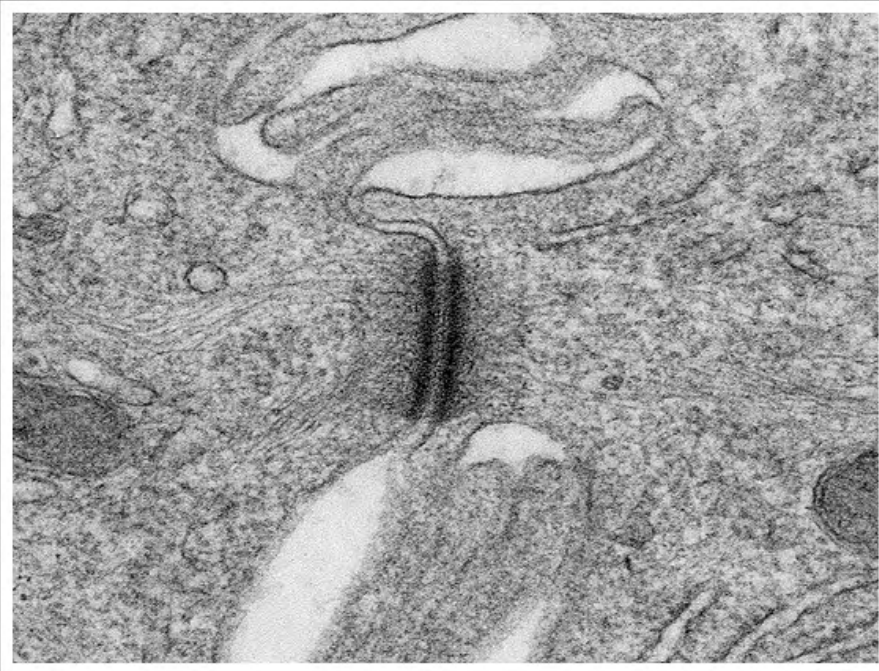
migawki



stereocylia



neksus



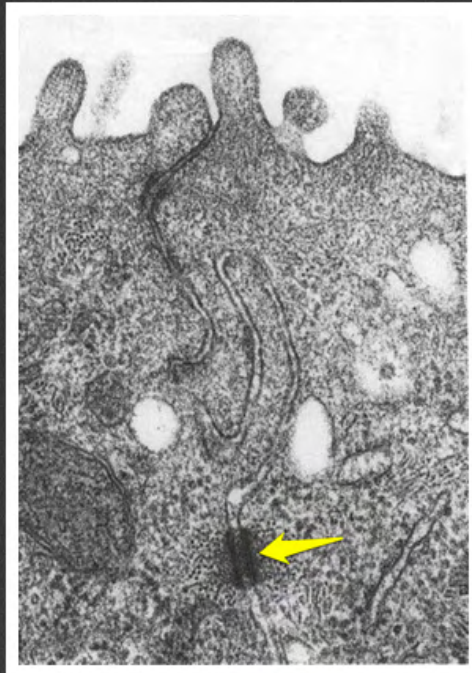
desmosom



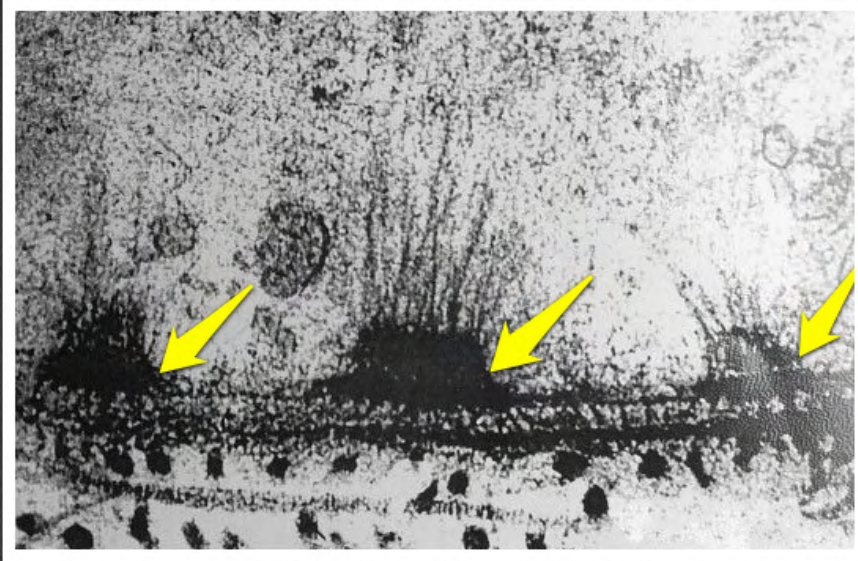
strefa zamykająca



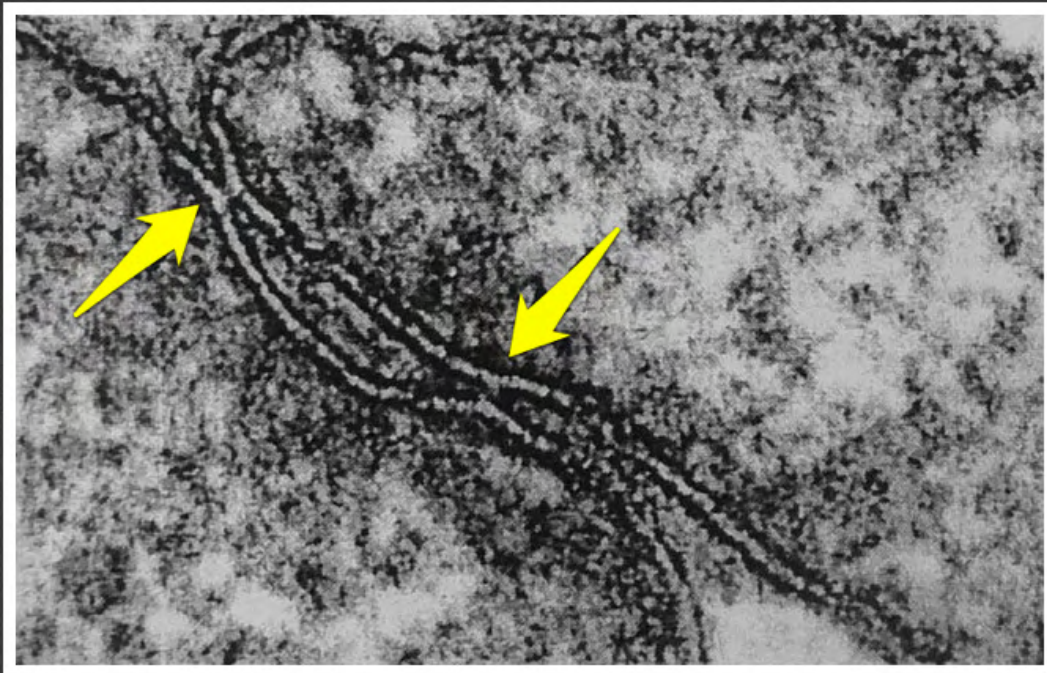
strefa przylegania



desmosom



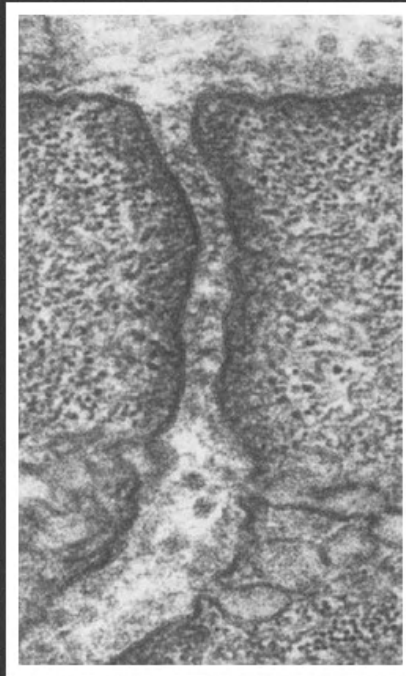
półdesmosomy



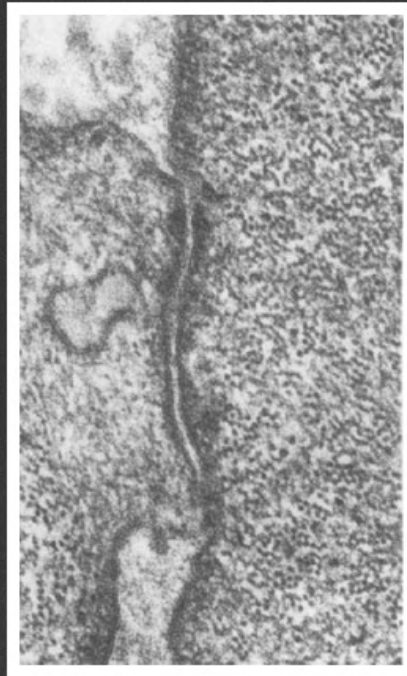
strefy zamykające



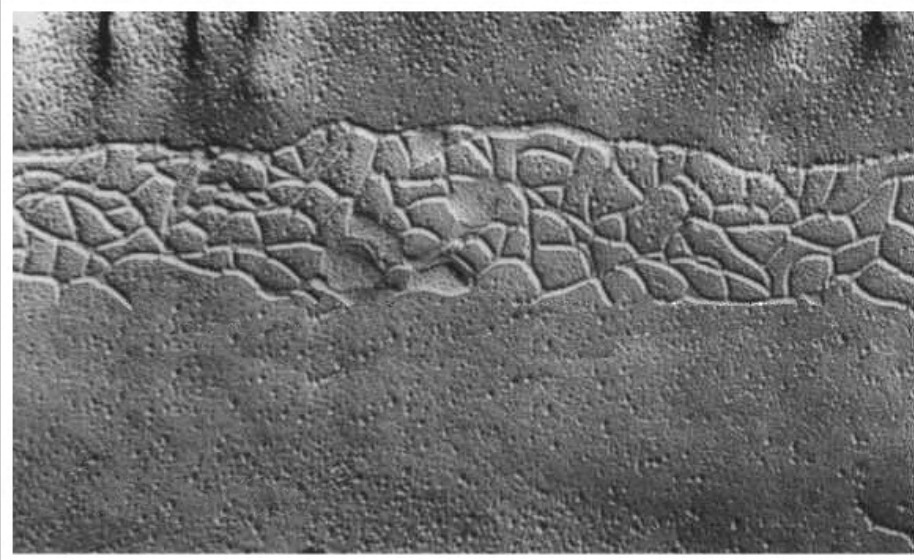
neksus



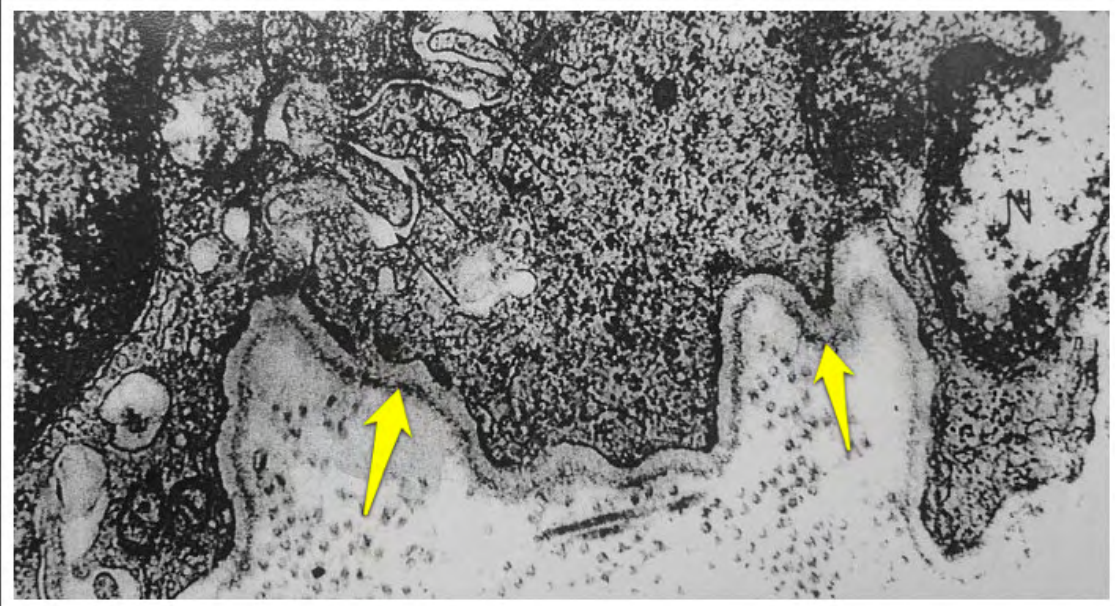
desmosom



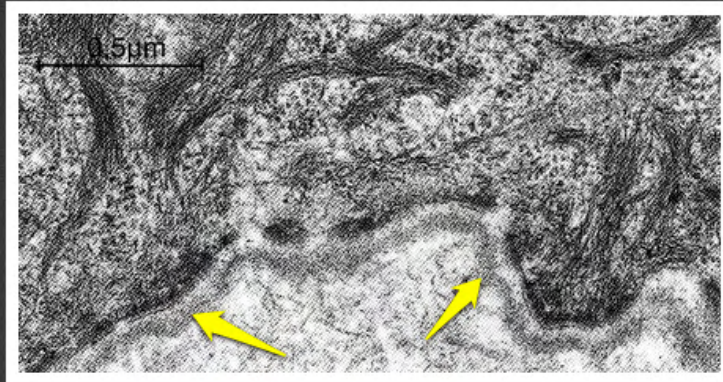
strefa przylegania



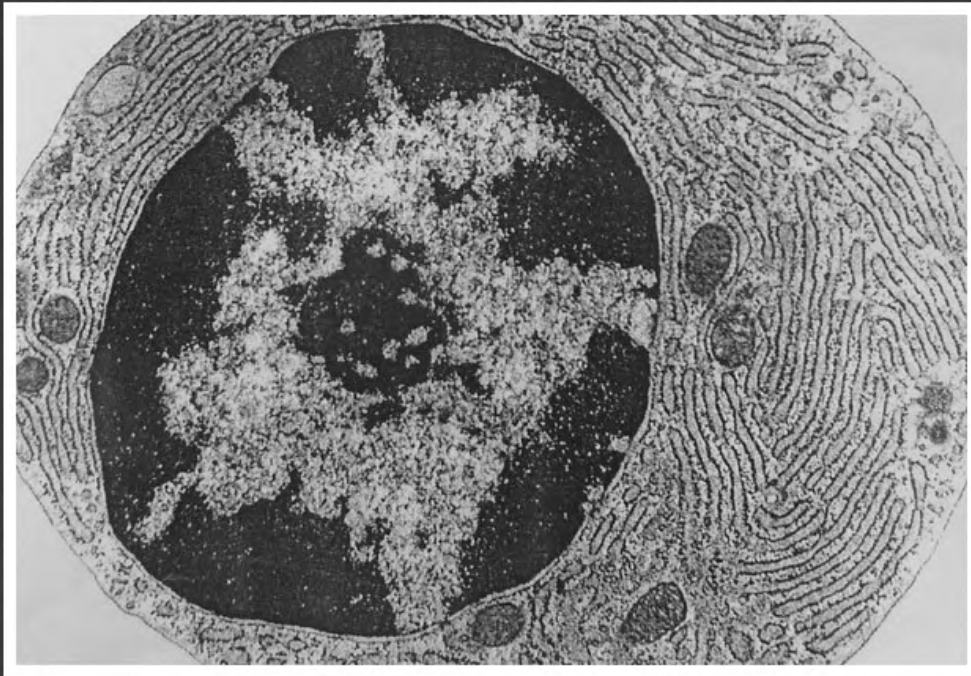
strefa zamykająca



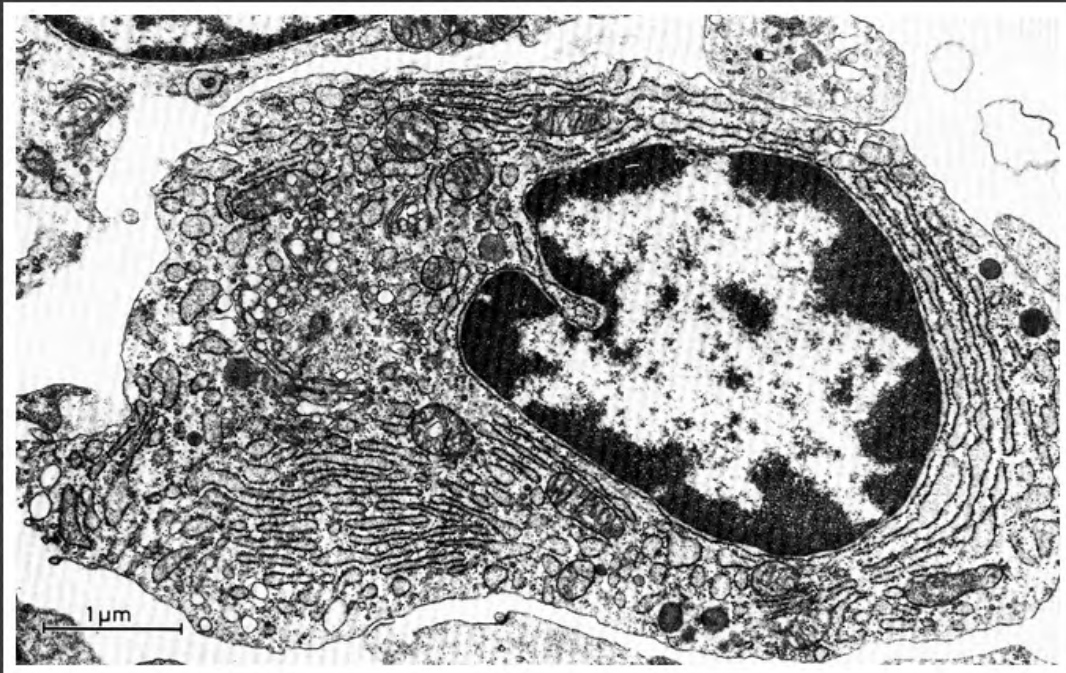
blaszka podstawna



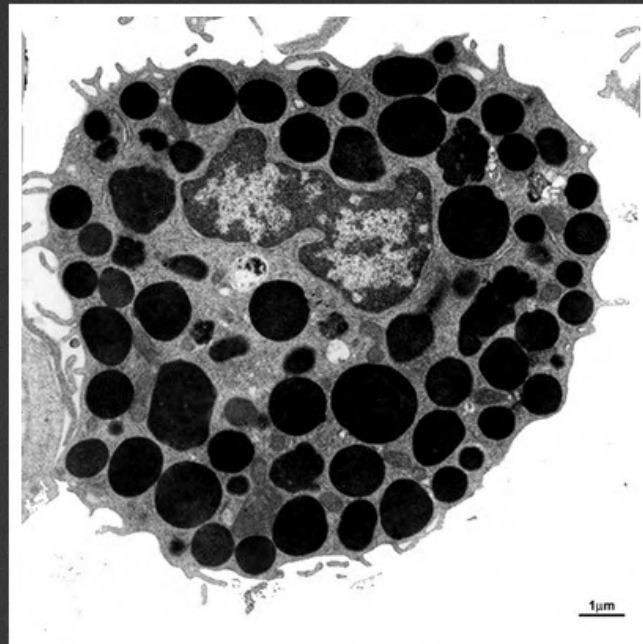
blaszka podstawna



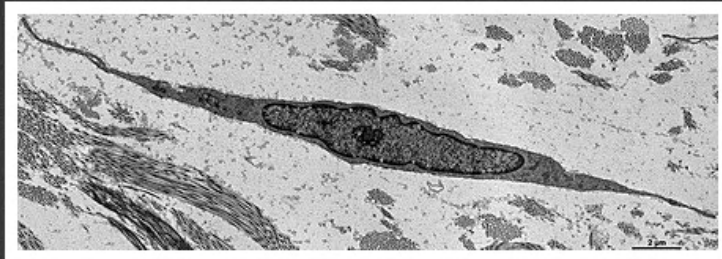
plazmocyty



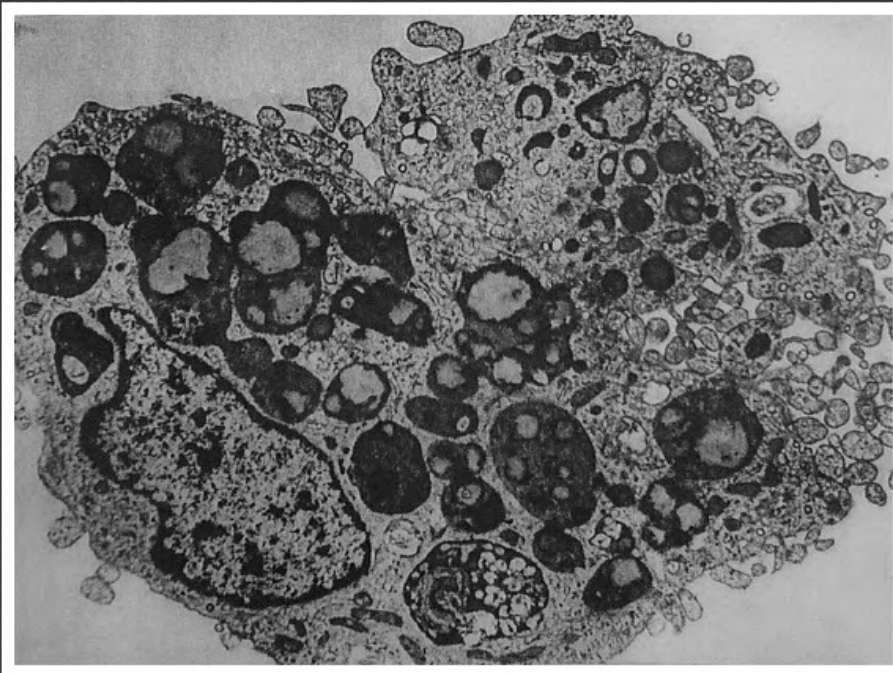
plazmocyty



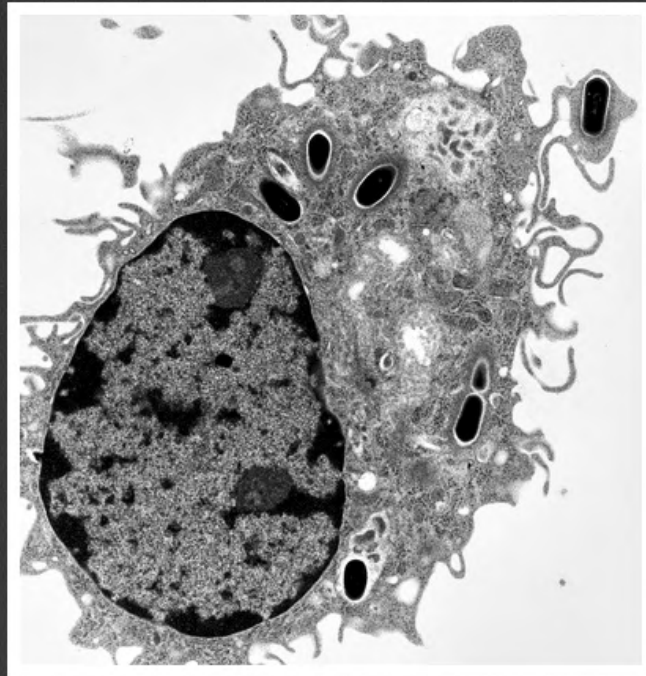
mastocyt



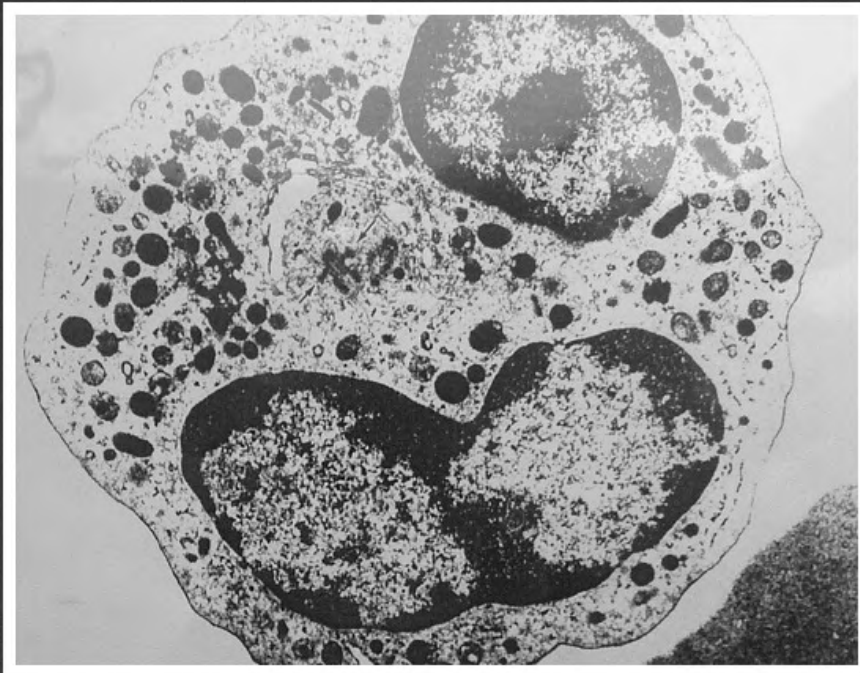
fibroblast



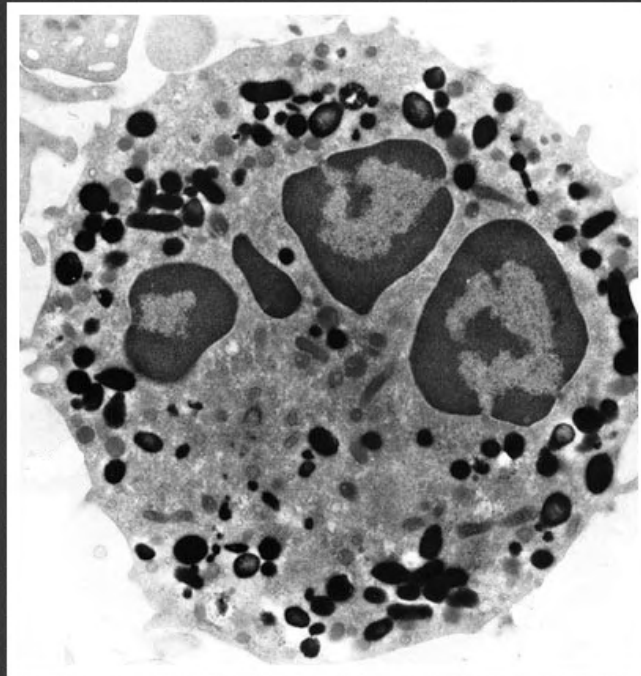
makrofag



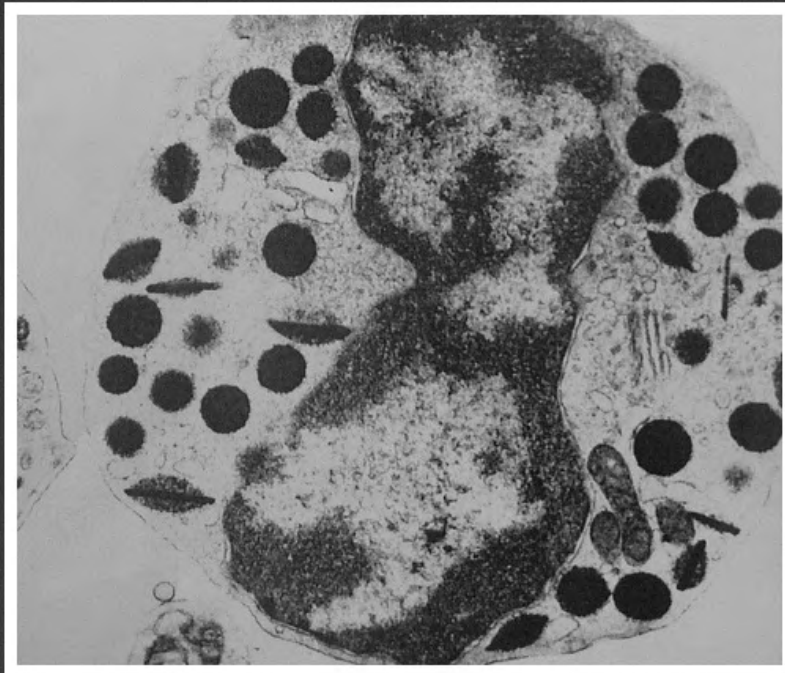
makrofag



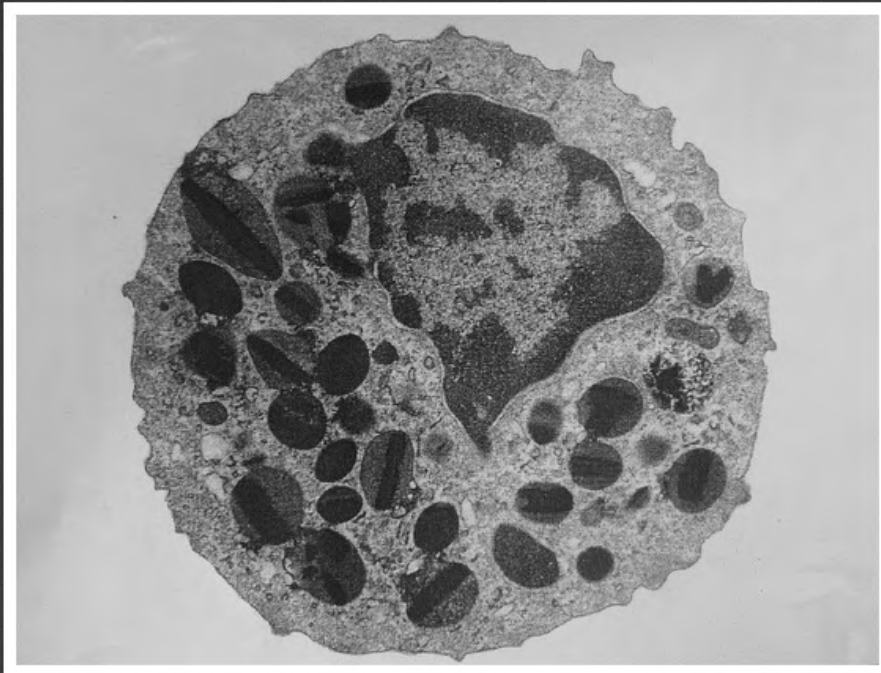
neutrofil



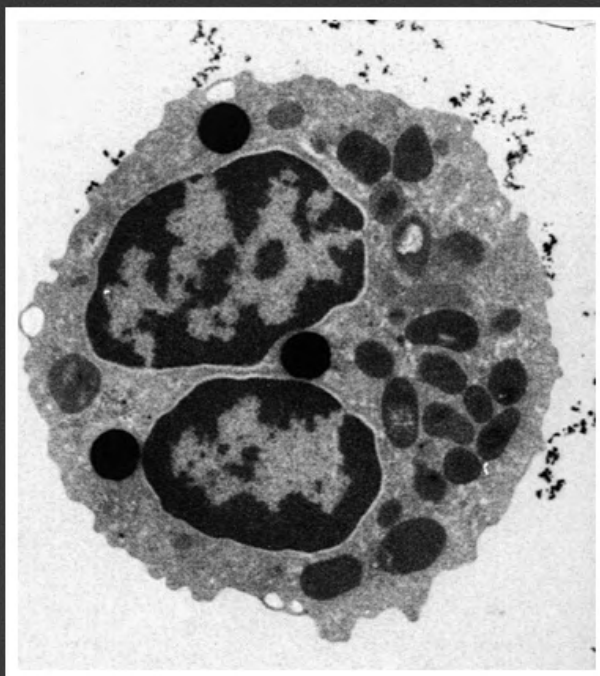
neutrofil



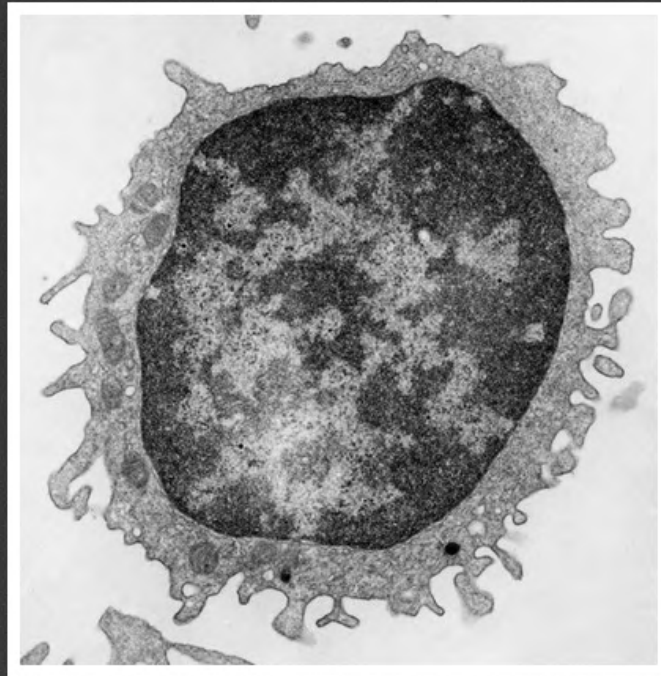
eozynofil



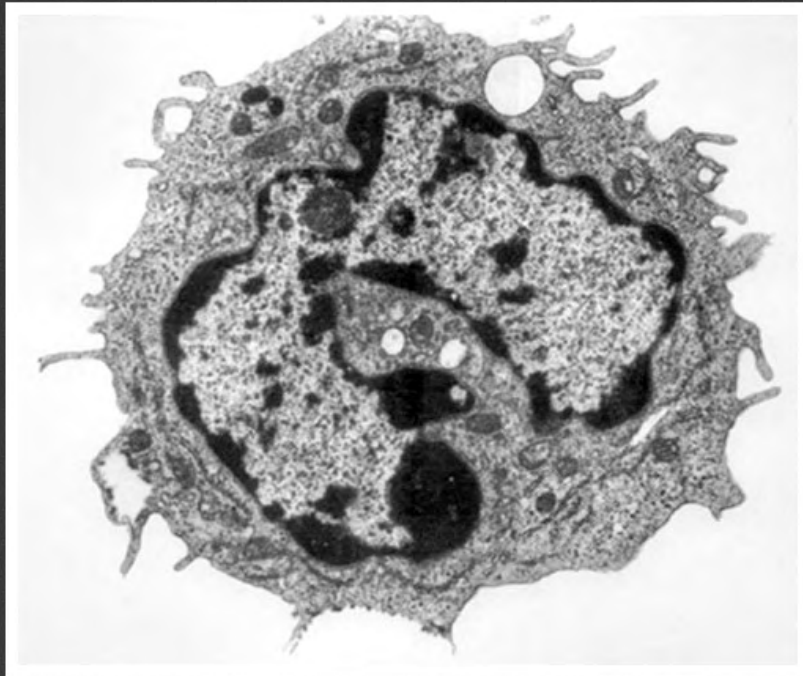
eozynofil



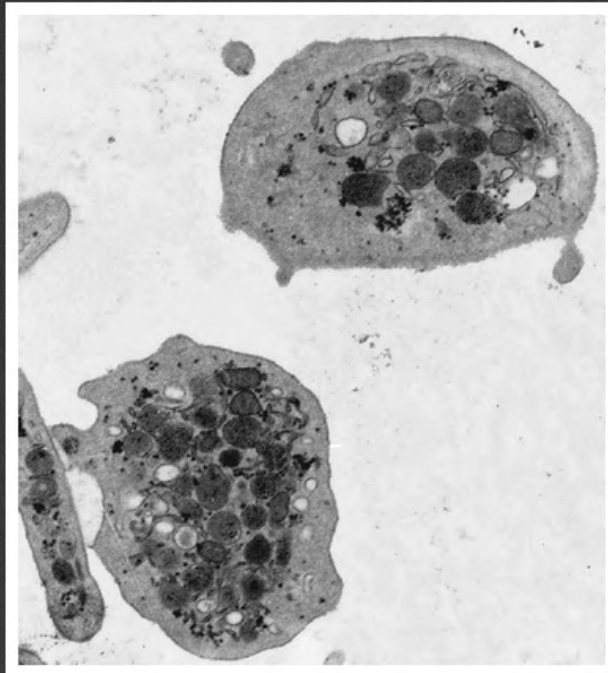
eozynofil



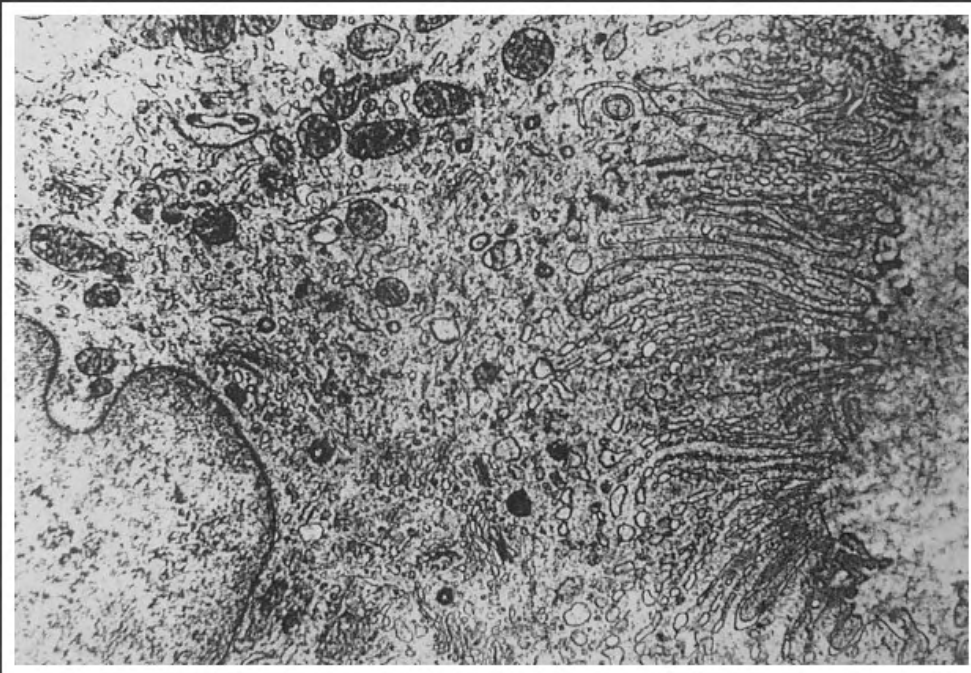
limfocyt



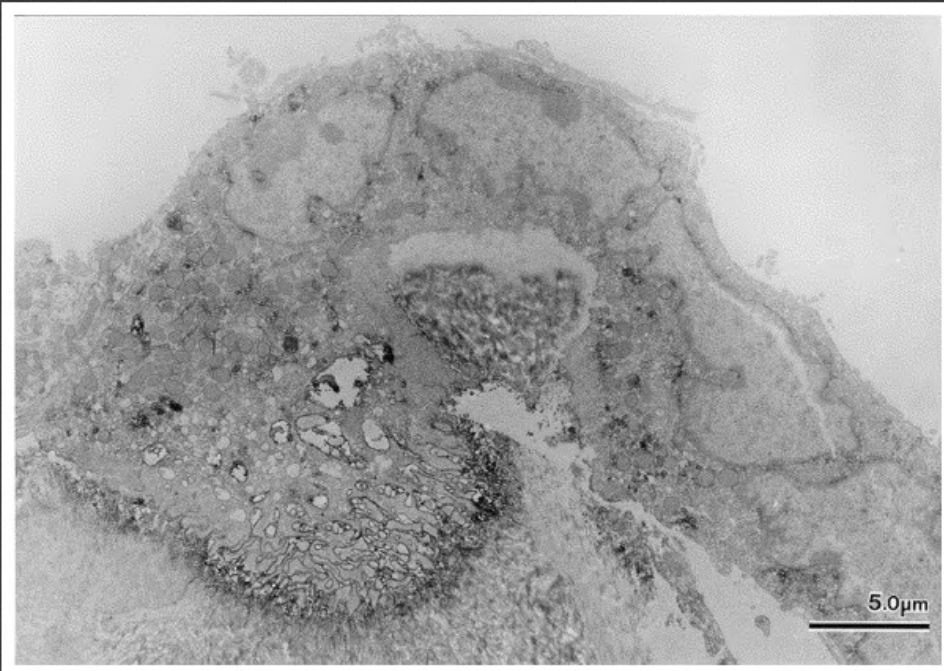
monocyt



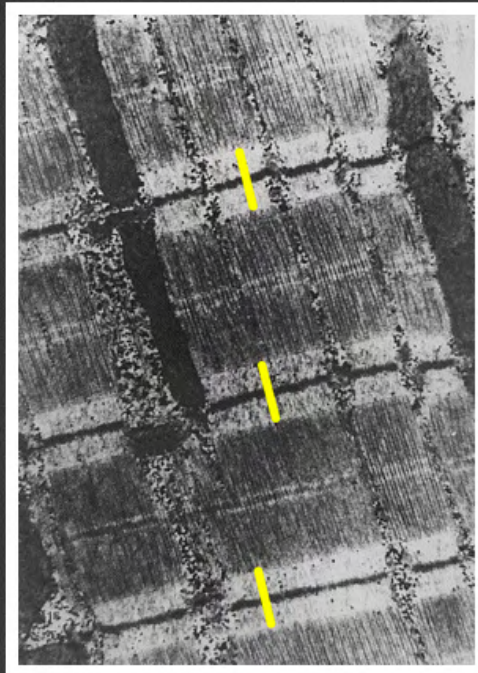
płytki krwi



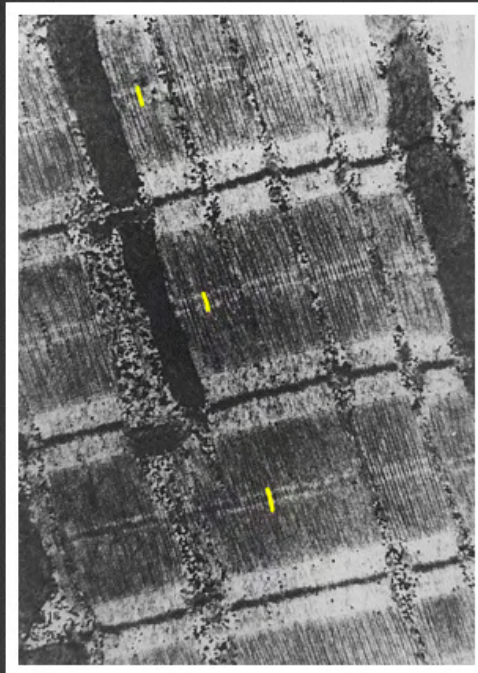
osteoklast



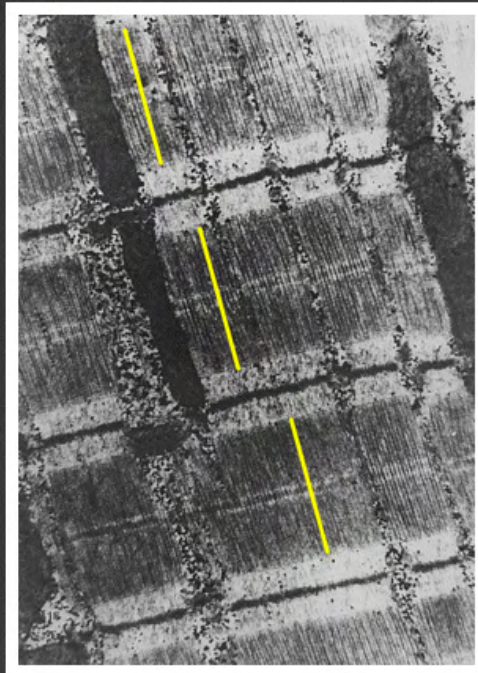
osteoklast



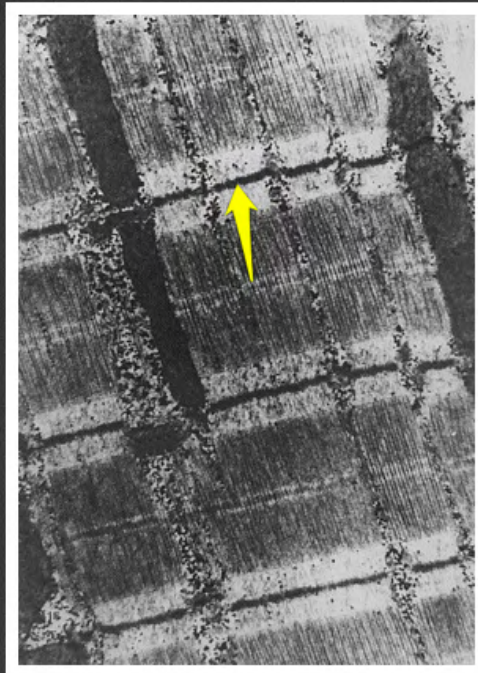
sarkomer - prążki I



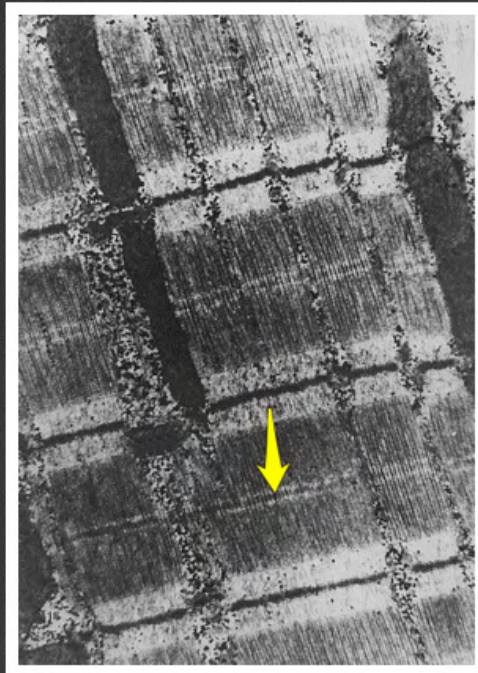
sarkomer - prążki H



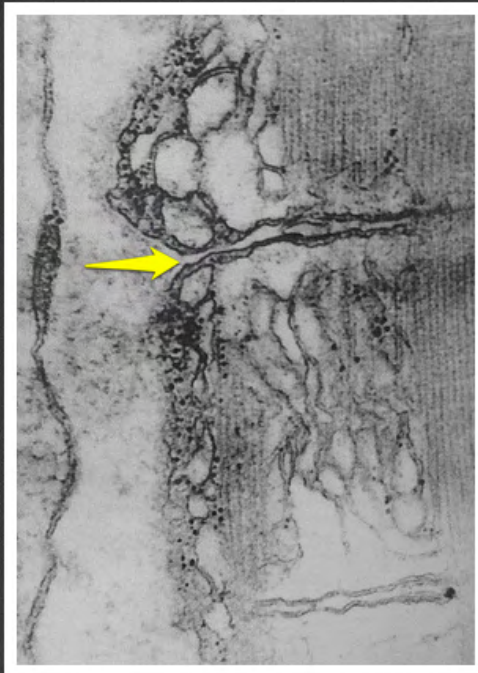
sarkomer - prążki A



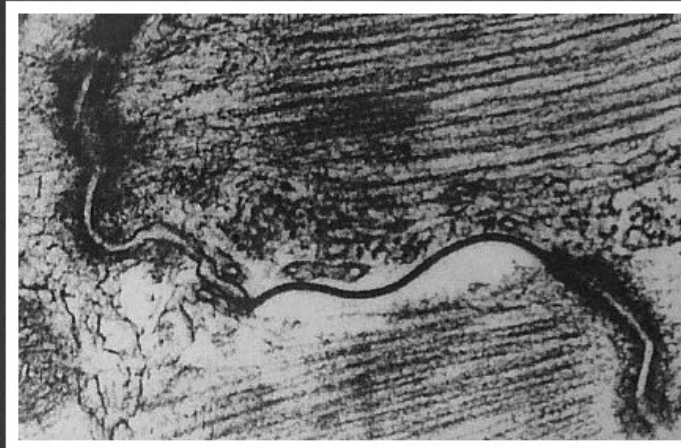
sarkomer - linia Z



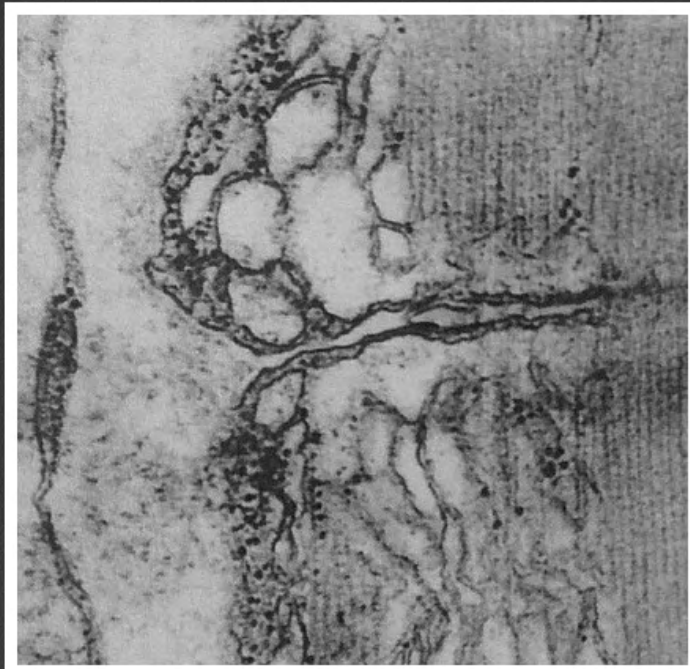
sarkomer - linia M



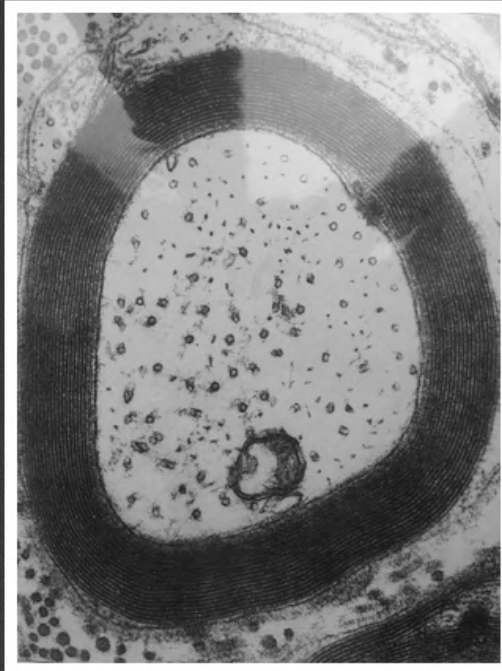
kanalik T



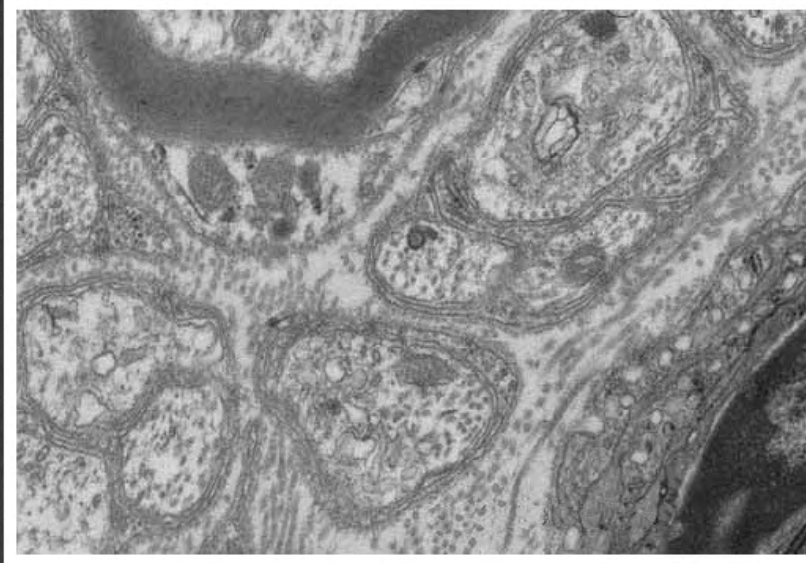
wstawka w mięśniu sercowym



triada mięśniowa



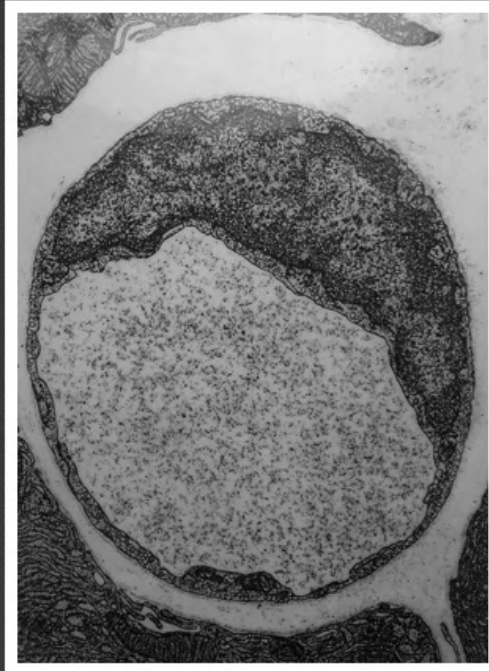
przekrój poprzeczny przez
zmielinizowane włókno nerwowe



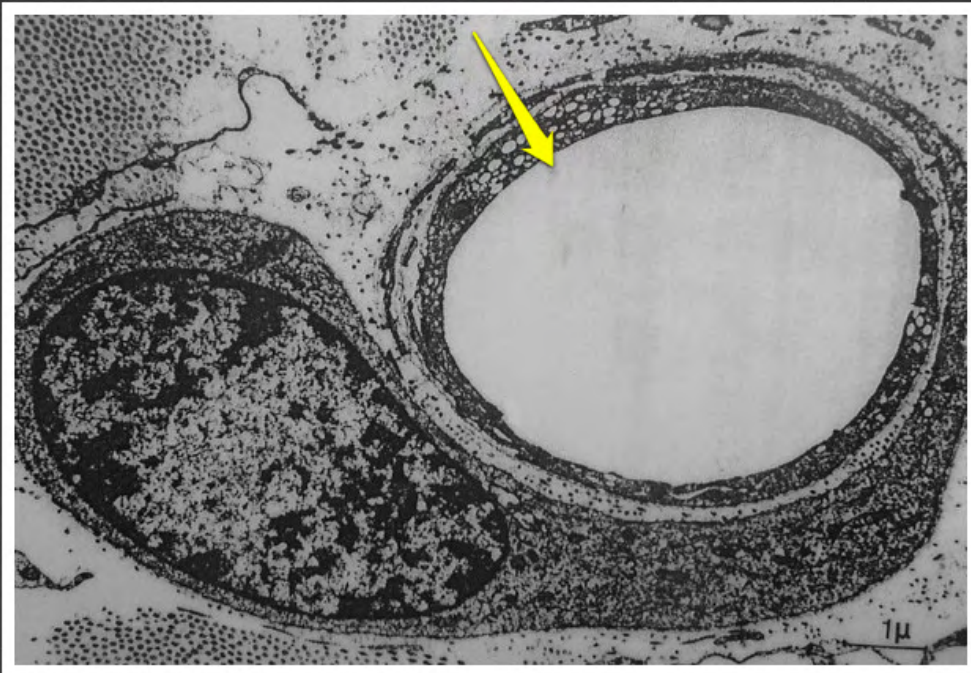
przekrój poprzeczny przez
niezmielinizowane włókna nerwowe



synapsa



kapilara o ścianie ciągłej



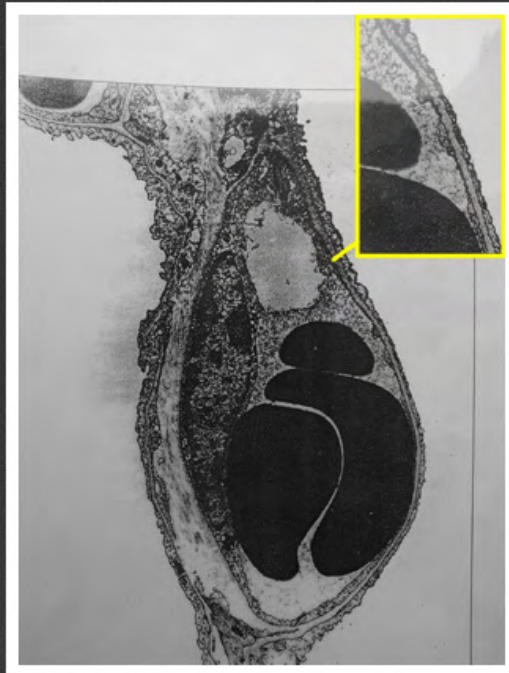
kapilara o ścianie ciągłej



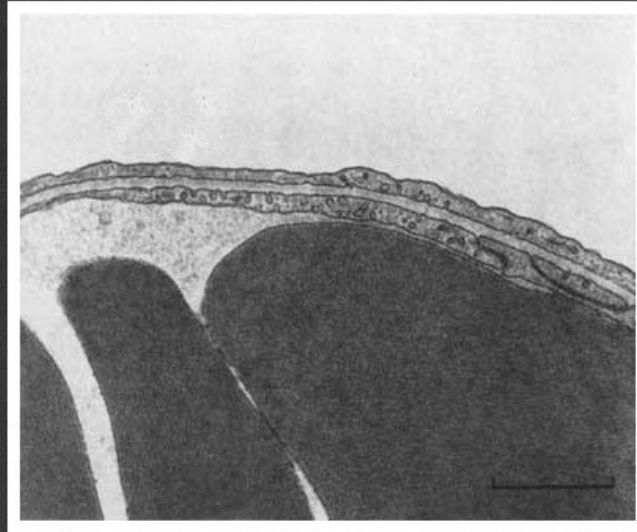
perycyt przy kapilarze o ścianie
ciągłej



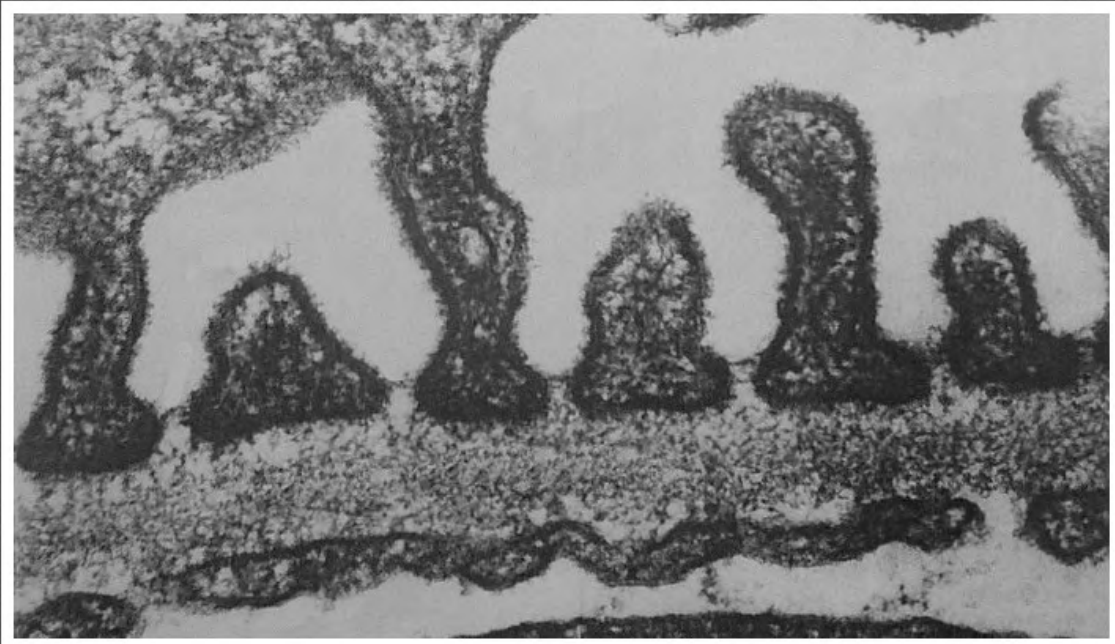
kapilara o ścianie okienkowej



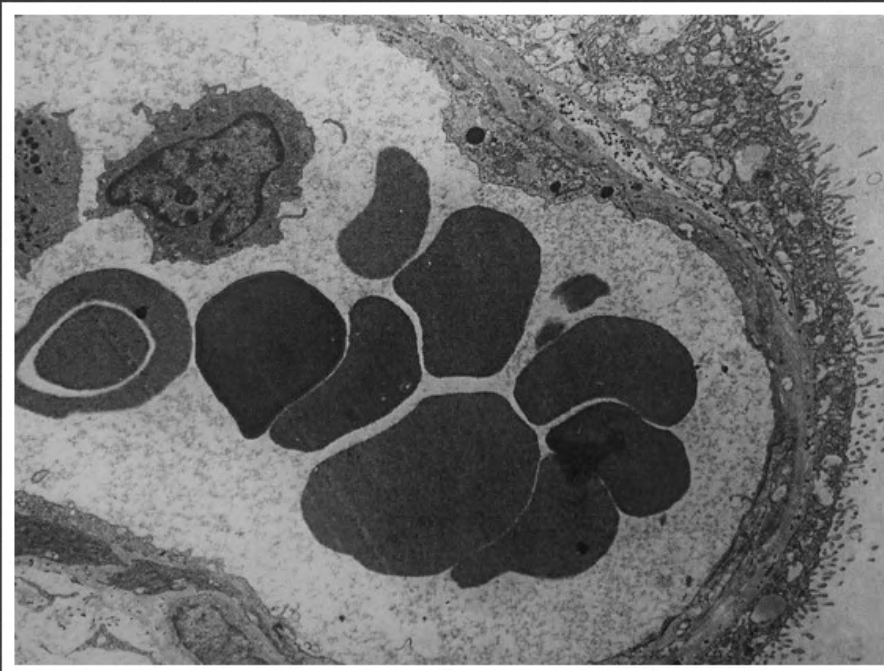
pęcherzyki płucne, kapilara, bariera
krew-powietrze



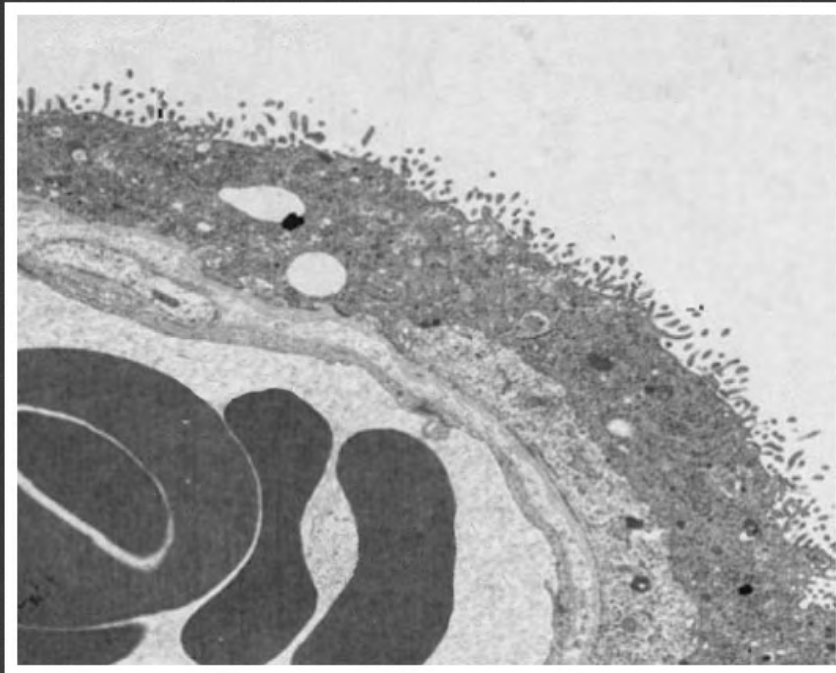
bariera krew-powietrze



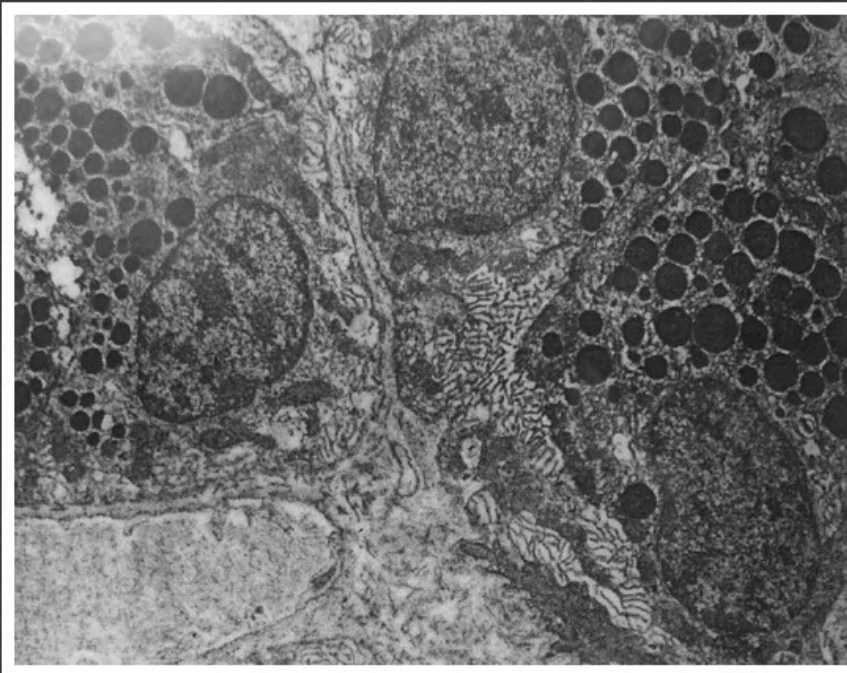
bariera filtracyjna nerki



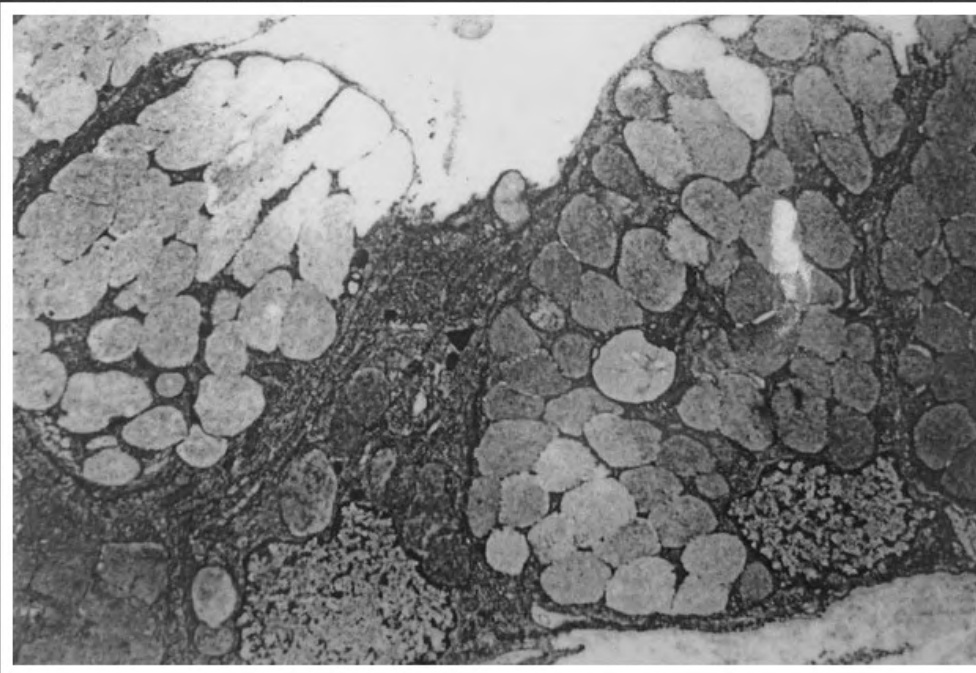
bariera łożyskowa



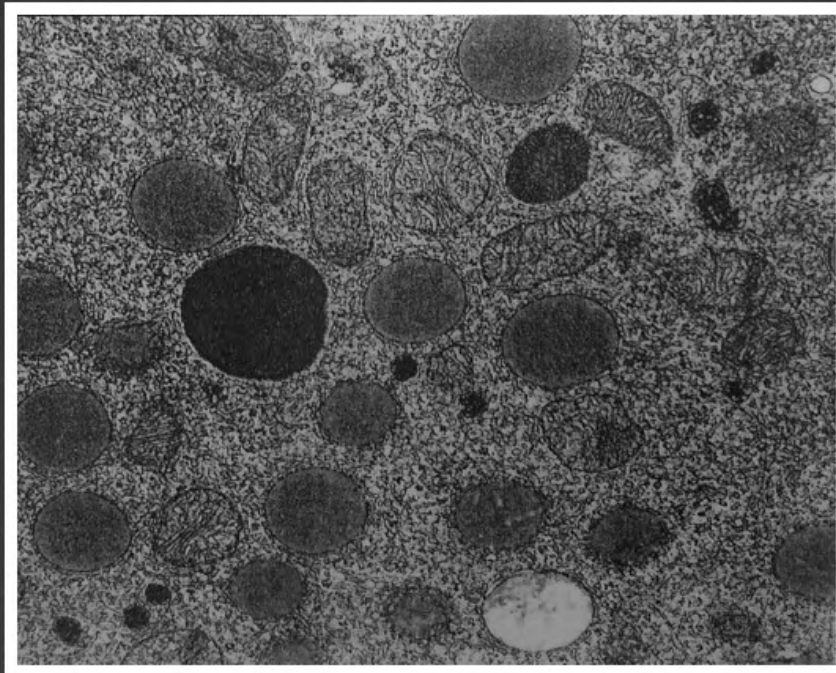
bariera łożyskowa



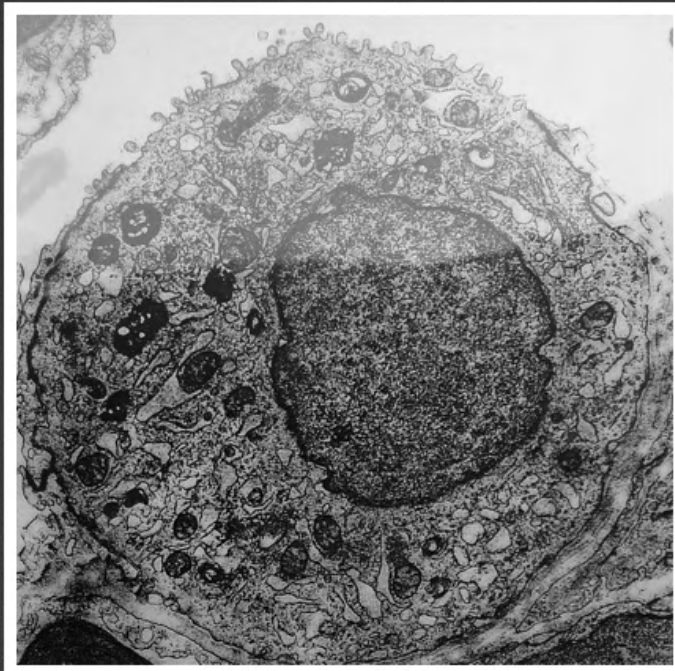
komórki pęcherzyka surowiczego



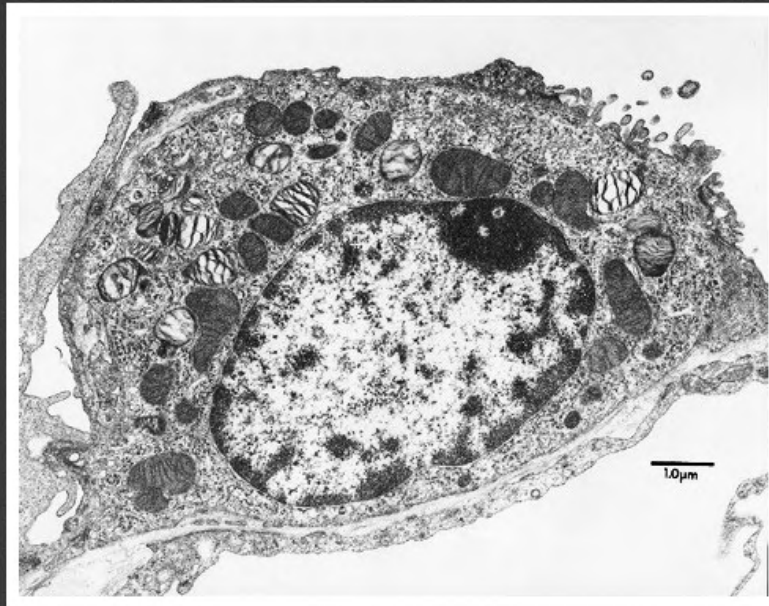
komórki cewki śluzowej



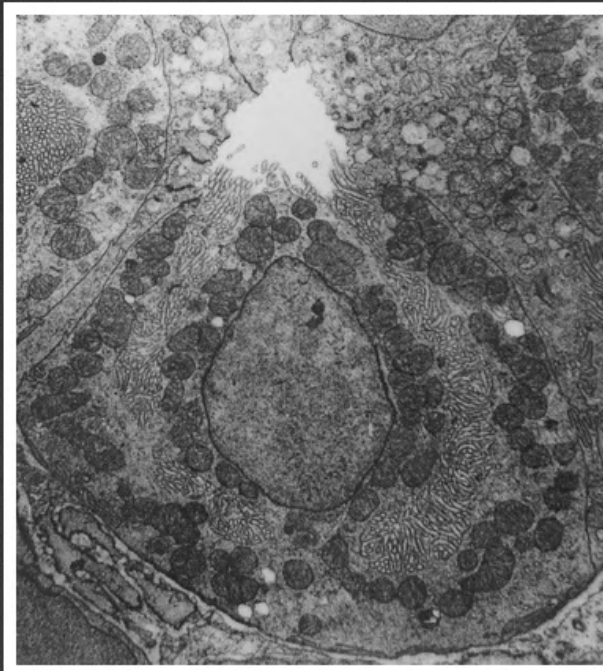
fragment komórki steroidogennej



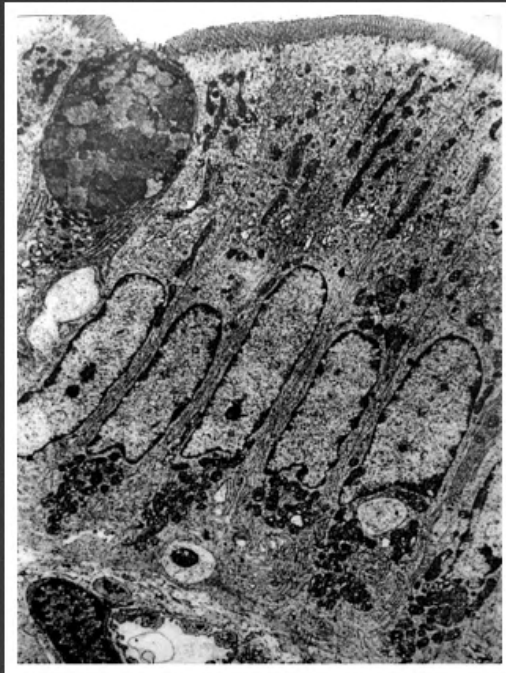
pneumocyt II typu



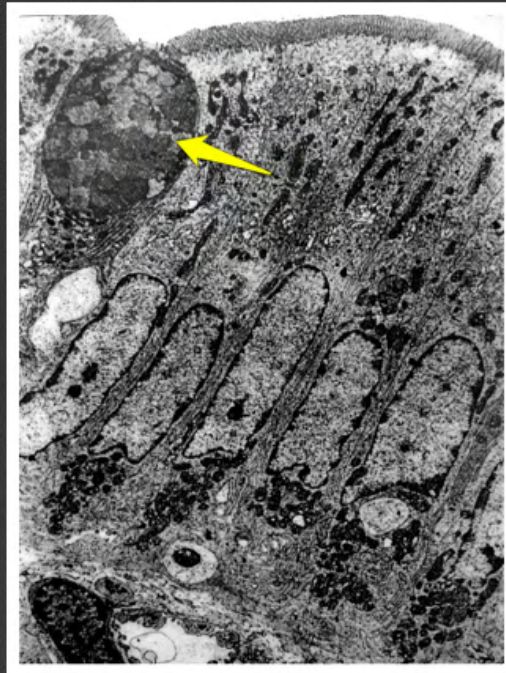
pneumocyt II typu



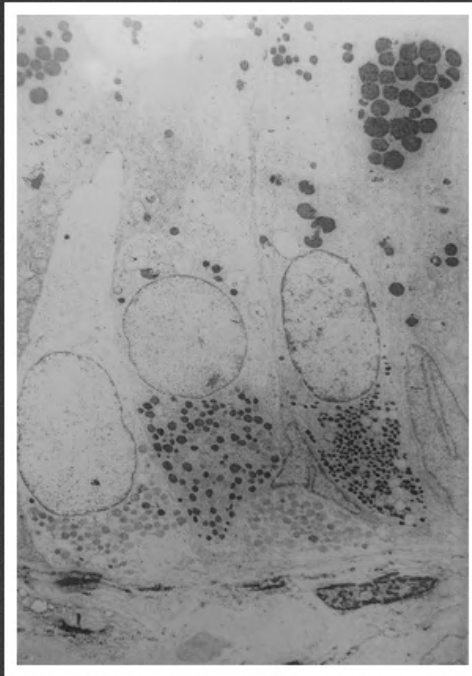
komórka okładzinowa



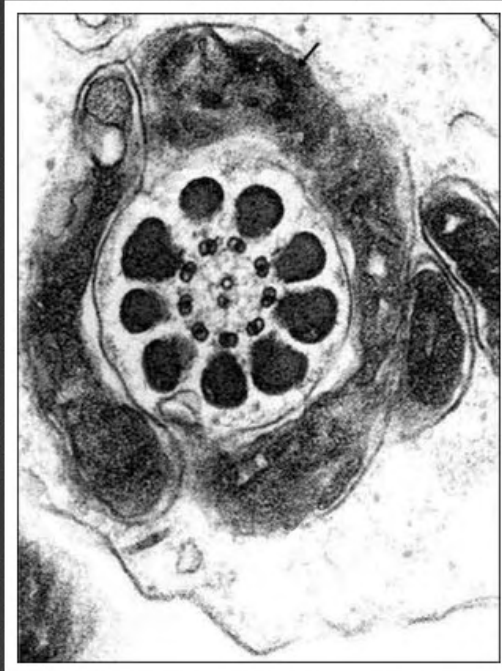
enterocyty



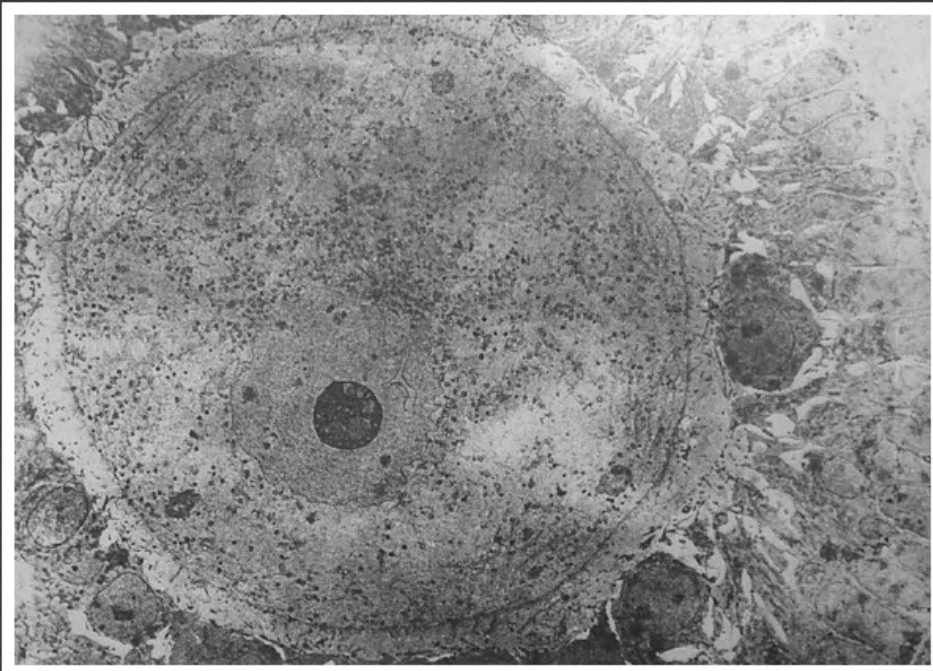
komórka kubkowa w nabłonku
jelitowym



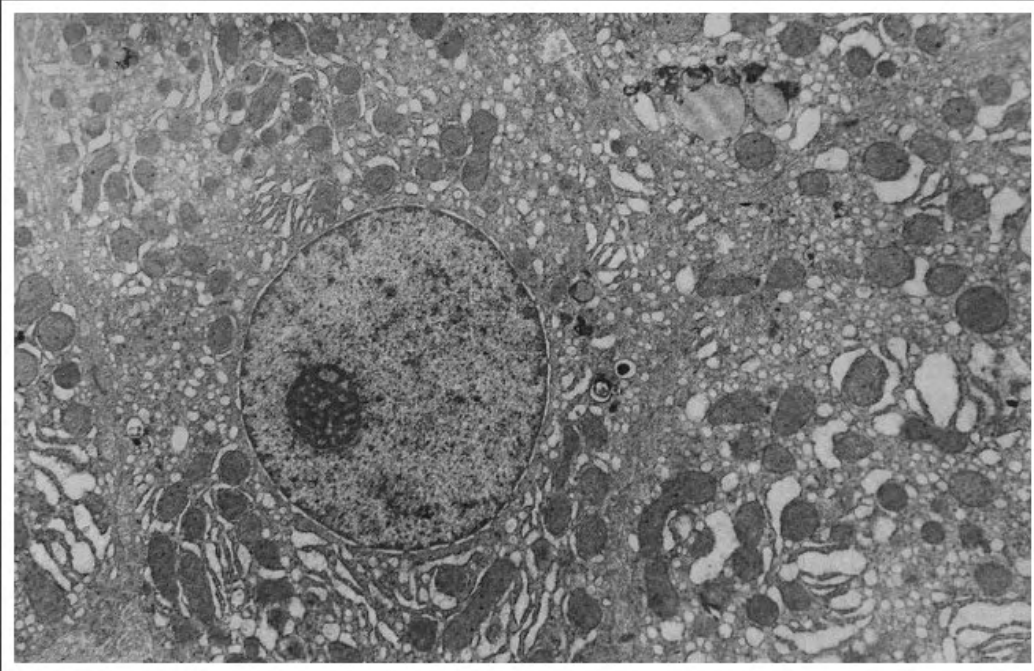
komórki DNES w nabłonku jelitowym



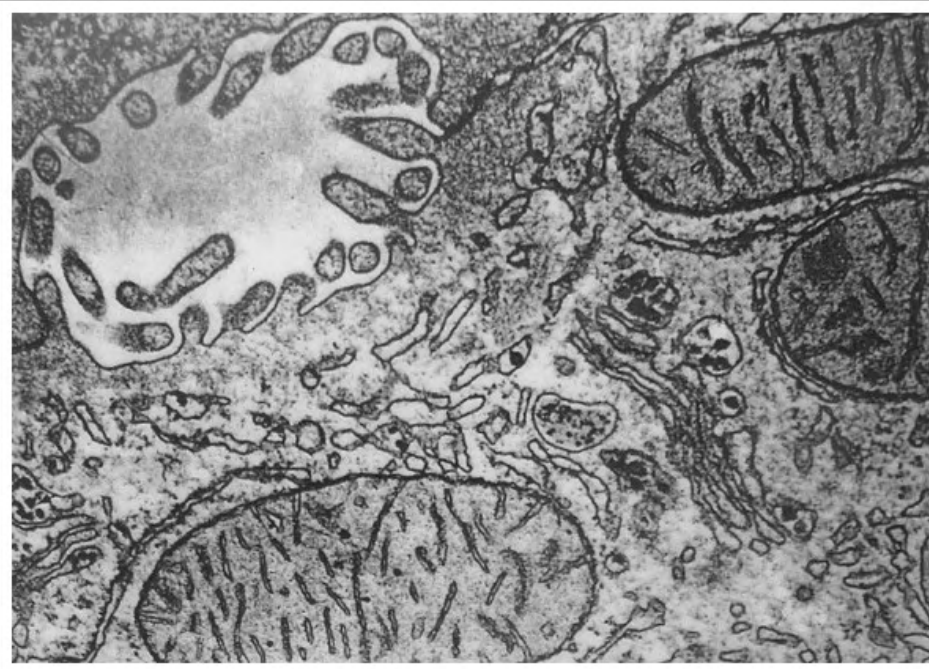
przekrój przez wstawkę plemnika



oocyt



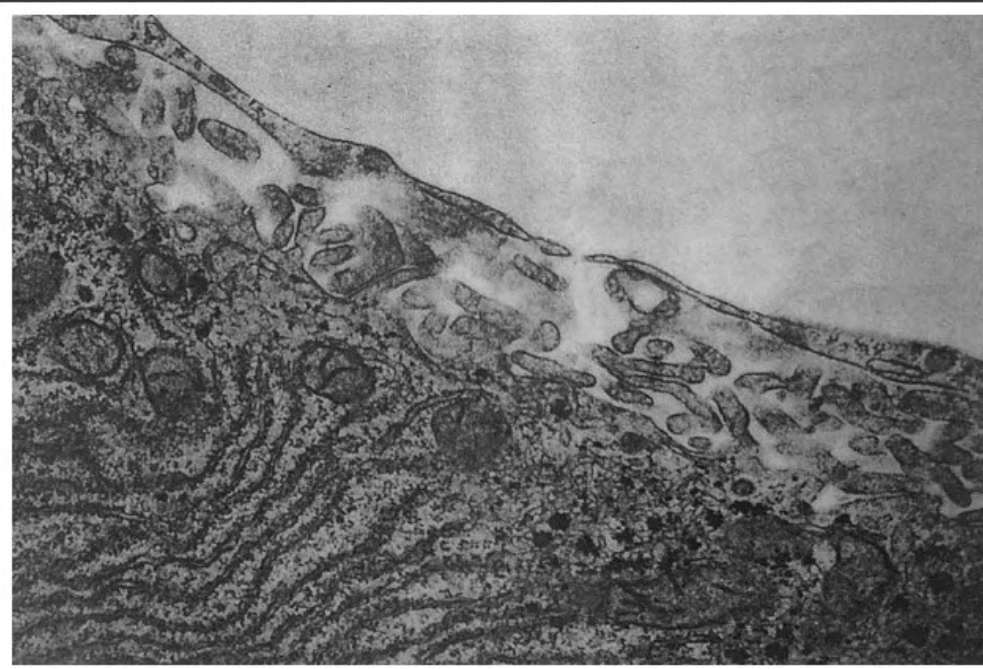
fragment hepatocytu



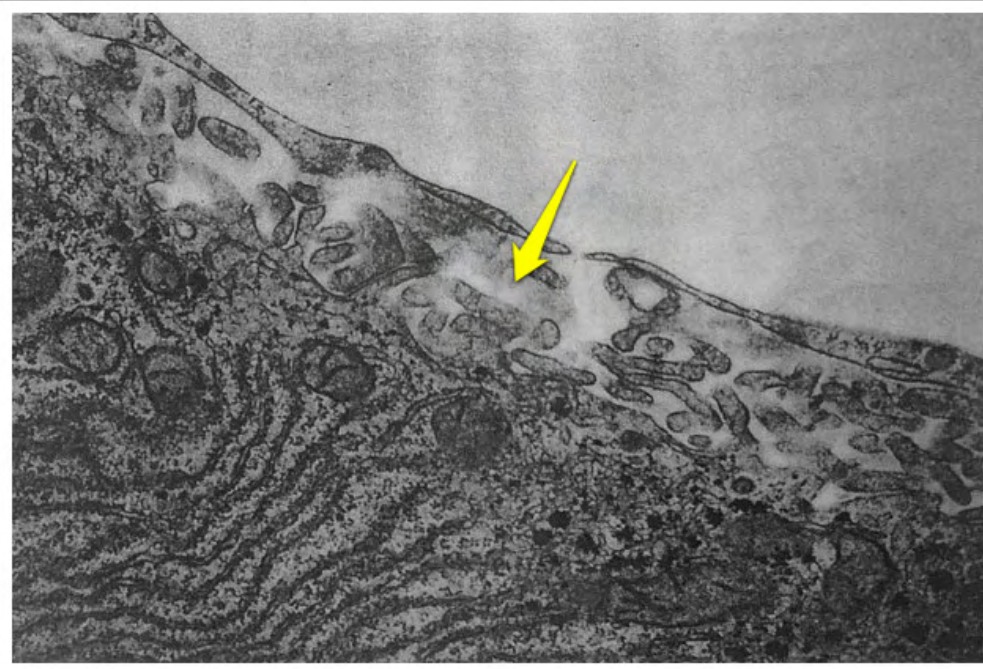
hepatocyt - biegun żółciowy



kanalik żółciowy



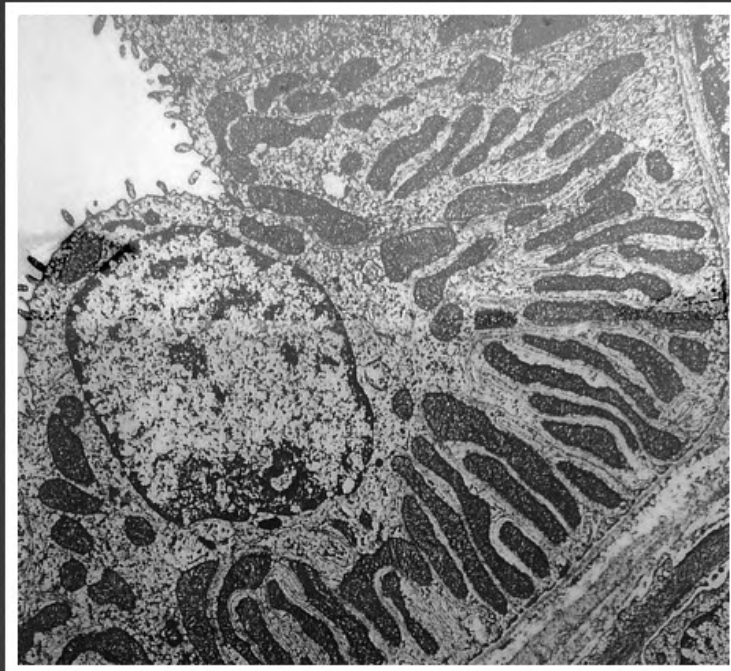
hepatocyt - biegun naczyniowy



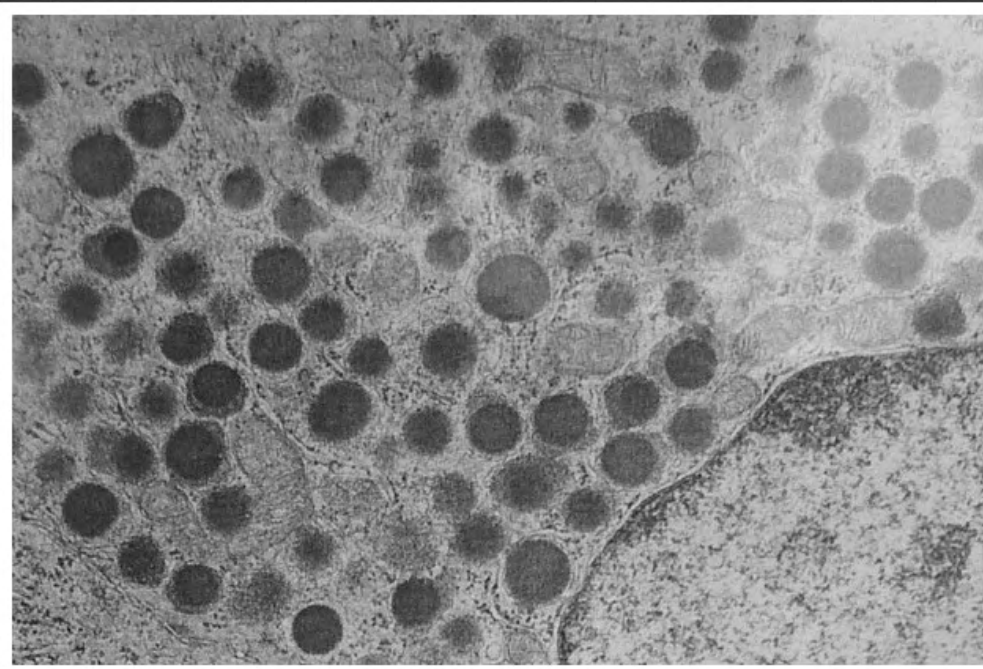
hepatocyt - biegun naczyńskiowy -
przestrzeń Dissego



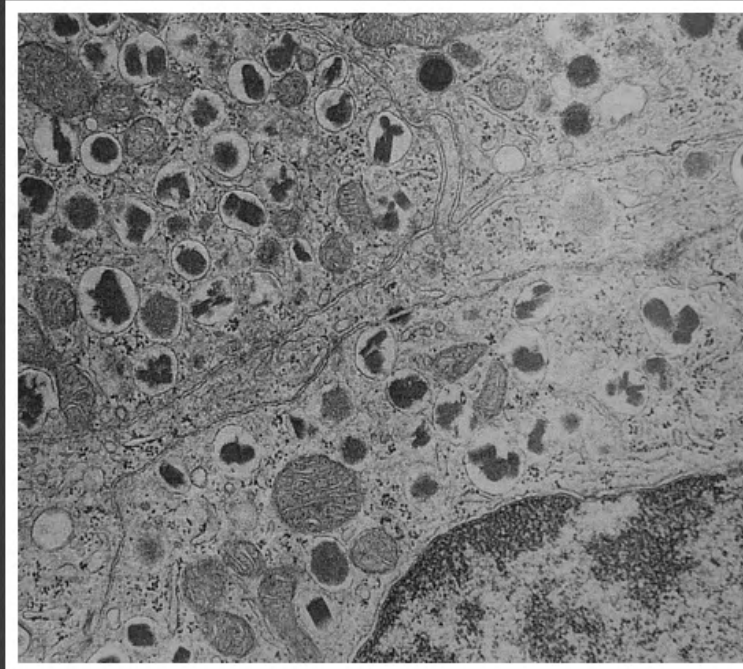
komórka kanalikula proksymalnego
nerki



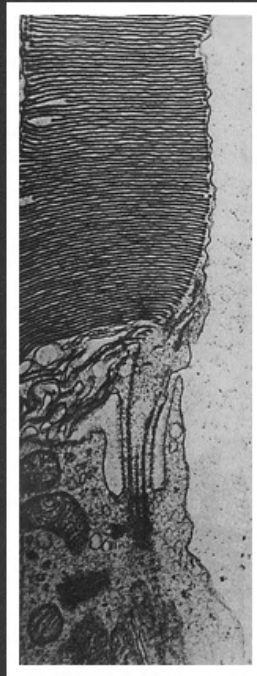
komórka kanalika dystalnego nerki



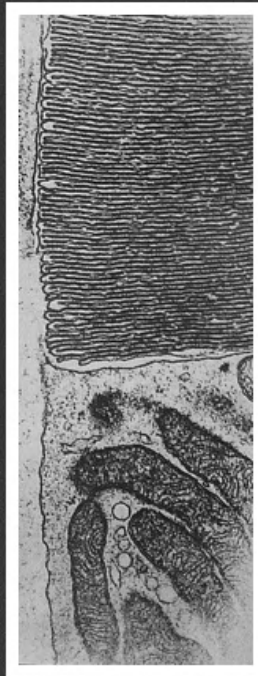
fragment komórki A wysepki
trzustkowej



fragment komórki B wysepki
trzustkowej



pręcik



czopek