

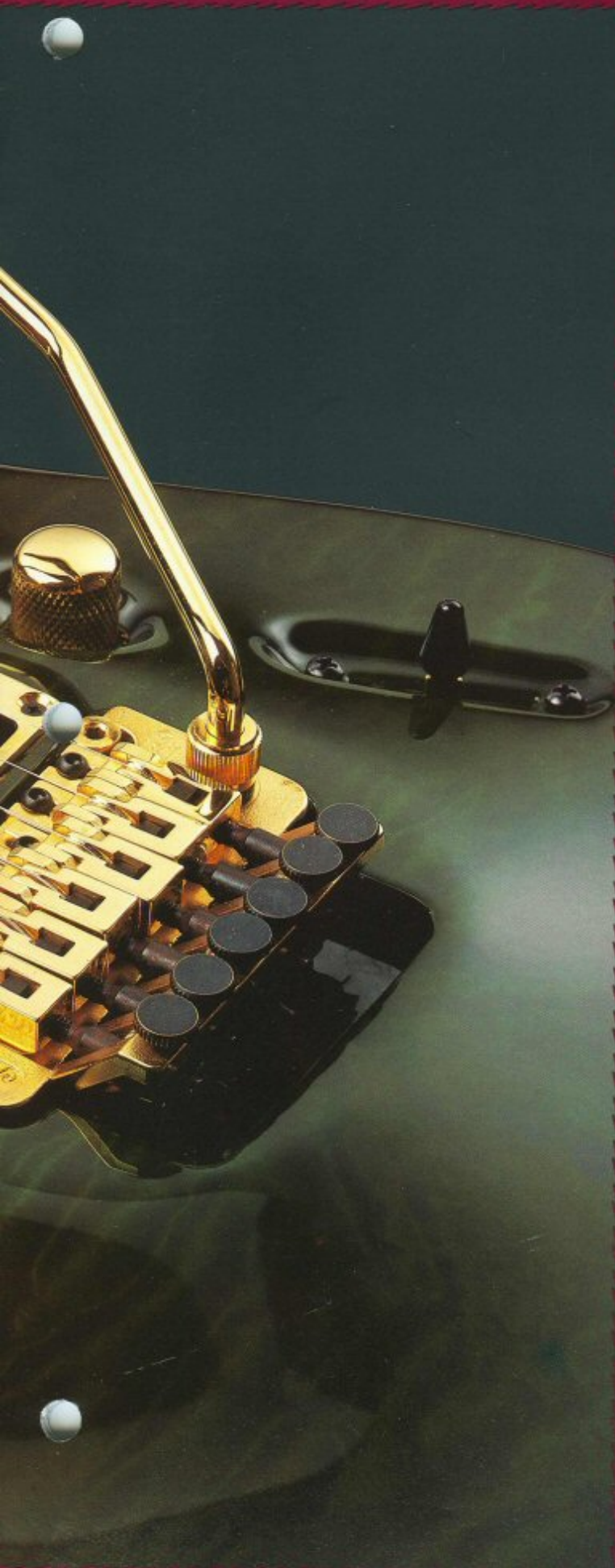
**JACKSON/CHARVEL**



**1993  
GUITAR  
CATALOG**

# JACKSON/CHARVEL





In 1978, Charvel introduced the first electric guitar specifically created for that day's style of hard driving rock & roll. It was the first time a company had built and designed a guitar exclusively for "Heavy Metal." Charvel Guitars became accepted as an instant success worldwide, and we have continued to expand our influence into all types of music.

Beginning with our first Soloist and Rhoads guitars, Jackson/Charvel has helped define the meaning of quality in the manufacturing of electric guitars. Through the use of superior materials and workmanship, we have continually set the standards by which quality musical instruments are judged.

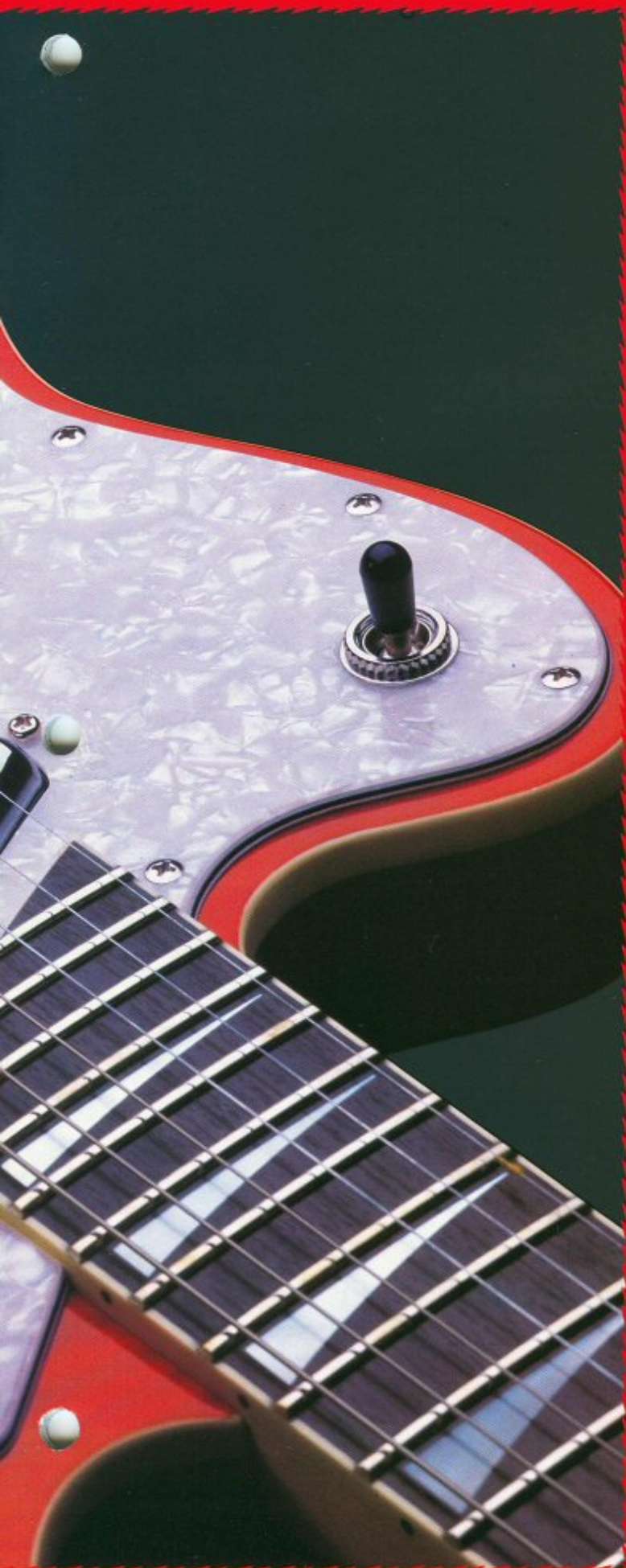
Today we are not only continuing this tradition, but we have greatly enhanced it to include a much larger range of instruments so that now not only the professional musician can afford to own a piece of our growing legacy. By utilizing the most modern production technologies combined with traditional methods, we can offer the same level of quality in all of our instruments, regardless of price.

No matter what type of music you play, there is a Jackson/Charvel guitar or bass that will compliment your musical style. Don't just take our word for it, play one of our instruments and you will instantly understand why so many of today's most respected players have chosen Jackson/Charvel Guitars to be their only choice for stage and studio work alike.



**CHARVEL**



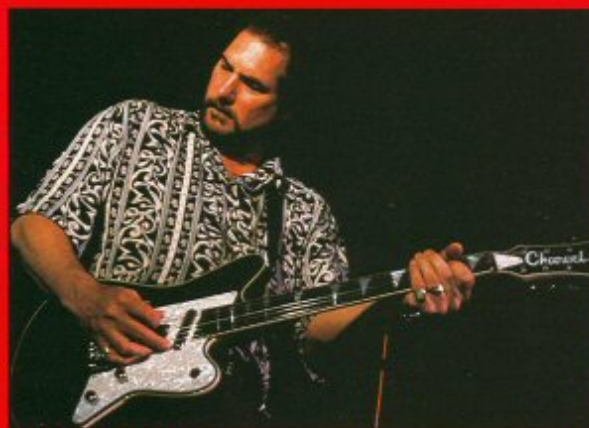


**F**or three generations of guitarists, the Charvel brand name has become synonymous with high quality, reliable performance and design innovation that have set it apart from all other guitar companies. If you have been playing for some time, you will remember when we were a very small company only producing a limited number of instruments which wound up being used by some of the most prestigious players of the day. You may also remember when we started building our new range of neck thru body instruments under the Jackson name.

If you started playing within the last ten years, you will remember when Charvel revolutionized the acceptable level of quality of the entire industry when we released our first line of full scale production models. This was the first time a reasonably priced production guitar had been brought to the market that had the same level of quality and attention to detail as our hand made guitars. Today, Charvel's products include a complete range of instruments for every style of music and every level of player from amateur to the working professional.

This year's catalog will introduce you to several new models, including our new ATX Series of semi-acoustic guitars and basses. These guitars offer the light weight and playability of a solid body electric guitar with the sound of a full size hollow body acoustic.

Be sure to check out our separate Charvel Acoustic Instruments Catalog, or visit your nearest Jackson/Charvel dealer, to find out about our fine hand crafted line of acoustic guitars and basses.



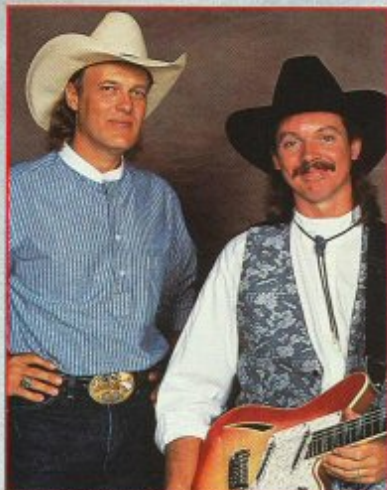
**STEVE CROPPER**

# SURFCASTER



## SURFCASTER HT

**BODY:** Basswood or \*Mahogany w/figured Top  
**NECK:** Eastern Maple  
**FINGERBOARD:** Rosewood  
**SCALE:** 25.5 inch 24 Frets  
**BRIDGE:** JT-390 w/Tailpiece  
**CONTROLS:** Volume, Tone w/Push-Push, 3-Way Toggle  
**ELECTRONICS:** Passive w/Push-Push Tone for Phase Reverse  
**PICKUPS:** Chandler LST (N), Chandler LST (B)  
**FINISHES:** \*TR, \*TO, \*SGL, BLK, TRQ, MAG

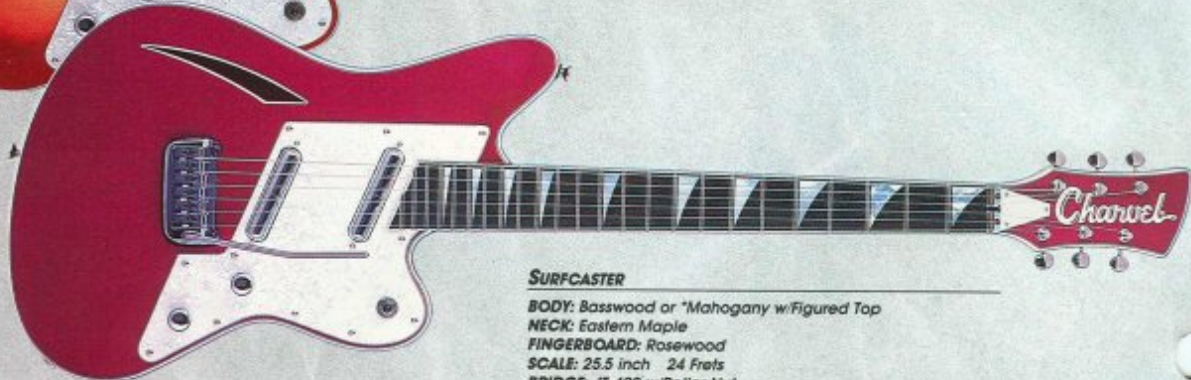


BETH GWINN

TOMMY HANNUM —  
RICKY VAN SHELTON



PUSH/PUSH TONE KNOB



## NECK SPECS

**NUT WIDTH:** 1 1/8"  
**THICKNESS:** 1st: 18mm  
 12th: 21mm

## SURFCASTER

**BODY:** Basswood or \*Mahogany w/figured Top  
**NECK:** Eastern Maple  
**FINGERBOARD:** Rosewood  
**SCALE:** 25.5 inch 24 Frets  
**BRIDGE:** JT-490 w/Roller Nut  
**CONTROLS:** Volume, Tone w/Push-Push, 3-Way Toggle  
**ELECTRONICS:** Passive w/Push-Push Tone for Phase Reverse  
**PICKUPS:** Chandler LST (N), Chandler LST (B)  
**FINISHES:** \*TR, \*TO, \*SGL, BLK, TRQ, MAG

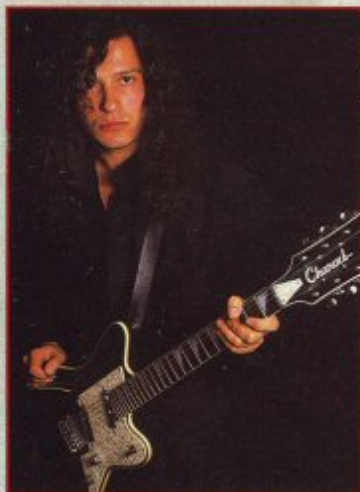
The *Surfcaster Series* of instruments represents a dramatic step forward in the evolution of the electric guitar. They are a true hybrid of all the things that make vintage instruments desirable, merged with modern materials and construction techniques for reliability and uncompromising performance.

"Crisp, sparkling sound, visually arresting," were just a few of the good things Stan Cotey of *Guitar Player Magazine* had to say in his excellent review of the *Charvel Surfcaster*. Recreations of vintage *Lipstick Tube* pickups give the *Surfcasters* a clear bright tone which is unsurpassed for all types of music where a brilliant cutting tone is desired.

The six string model is available with either a fulcrum bridge and roller nut, which gives a very accurate and smooth feel to the tremolo, or with a fixed bridge and a floating tailpiece. The twelve string bridge has separately adjustable saddles for spot on intonation.

#### SURFCASTER BASS

**BODY:** Basswood or \*Mahogany w/ Figured Top  
**NECK:** Eastern Maple  
**FINGERBOARD:** Rosewood  
**SCALE:** 34 inch 21 Frets  
**BRIDGE:** JB-340  
**CONTROLS:** Volume, Tone w/ Push-Push, 3-Way Toggle  
**ELECTRONICS:** Passive w/ Push-Push Tone for Phase Reverse  
**PICKUPS:** Chandler LST (M), Chandler (B)  
**FINISHES:** \*TR, \*TO, \*SGL, BLK, TRQ, MAG



KRISTIN CALLAHAN

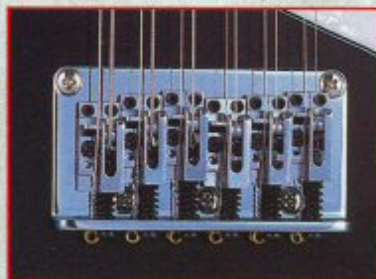
LOUIS SVITEK — MIND FUNK

#### SURFCASTER 12

**BODY:** Basswood or \*Mahogany w/ Figured Top  
**NECK:** Eastern Maple  
**FINGERBOARD:** Rosewood  
**SCALE:** 25.5 inch 24 Frets  
**BRIDGE:** J-370  
**CONTROLS:** Volume, Tone w/ Push-Push, 3-Way Toggle  
**ELECTRONICS:** Passive w/ Push-Push Tone for Phase Reverse  
**PICKUPS:** Chandler LST (N), Chandler LST (B)  
**FINISHES:** \*TR, \*SO, \*SGL, BLK, TRQ, MAG

#### NECK SPECS

**NUT WIDTH:** 1 1/4"  
**THICKNESS:** 1st: 20mm  
 " 12th: 21mm

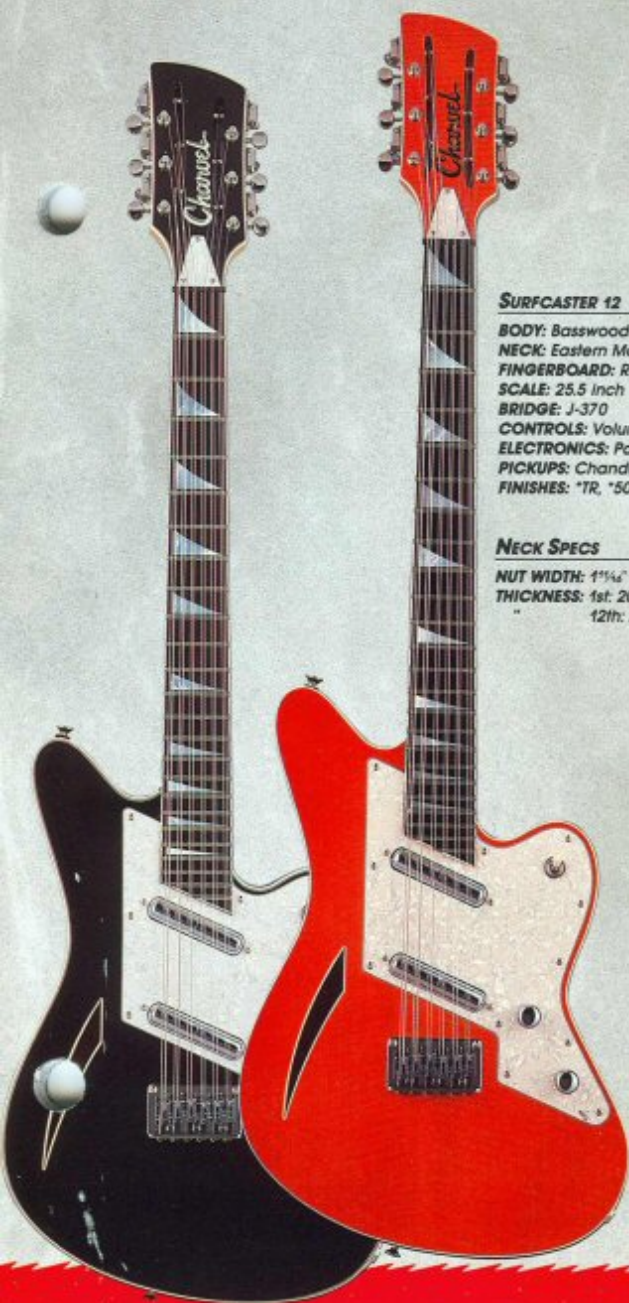


INDIVIDUALLY ADJUSTABLE SADDLES



#### NECK SPECS

**NUT WIDTH:** 1 5/8"  
**THICKNESS:** 1st: 19mm  
 " 12th: 21mm



# STX/TX

**F**or many years the only way to get a guitar the way you wanted it was to take a stock guitar and have it customized. Charvel's first products were replacement parts that enabled the guitarist to modify and upgrade his instrument to be the way he desired it. Soon after, we started building a limited number of guitars that incorporated those parts. Little did anyone know that these instruments would grow into what we now know as the Jackson/Charvel Guitar Company.

The STX and TX Custom follow this tradition by taking classic designs and updating them to take full advantage of the dramatic advances that have been made in electric guitar pickup design and tremolo bridge technology. The STX and TX Custom have all of today's state of the art advances already built in so all you have to worry about is your music.

You may choose from Basswood bodies in solid colors, or Ash bodies in an assortment of transparent colors and sunbursts. The STX Custom comes standardly equipped with hum cancelling J100VS pickups in the middle and neck positions and a powerful J92C humbucker in the bridge position.

The TX Custom has a reverse wound middle pickup to help eliminate 60 cycle hum when more than one of its single coil pickups are activated. The TX Custom also has a push/push switch built into the tone control knob which adds two additional pickup selections to the five way switch.

## STX/TX NECK SPECS

**NUT WIDTH:** 1 5/8"  
**THICKNESS:** 1st: 19mm  
12th: 21mm



### CHARVEL STX CUSTOM

**BODY:** Basswood or \*Ash  
**NECK:** Eastern Maple  
**FINGERBOARD:** Rosewood  
**SCALE:** 25.5 inch 22 Frets  
**BRIDGE:** JT-590 Double Locking  
**CONTROLS:** Volume, Tone, 5-Way Switch  
**ELECTRONICS:** Passive  
**PICKUPS:** J-100VS (N), J-100VS (M), J-100VS (B)  
**FINISHES:** \*TS, \*TB, \*TR, BLK, DMB, DMR



### CHARVEL TX CUSTOM

**BODY:** Basswood or \*Ash  
**NECK:** Eastern Maple  
**FINGERBOARD:** Rosewood or Maple  
**SCALE:** 25.5 inch 22 Frets  
**BRIDGE:** J-380  
**CONTROLS:** Volume, Tone w/ Push-Push, 5-Way Switch  
**SWITCH FUNCTION:** Down = Std. 5-Way, Up = (N) + (B) or (N) + (M) + (B)  
**ELECTRONICS:** Passive  
**PICKUPS:** J-100 (N), J-100RW (M), J-120 (B)  
**FINISHES:** \*TS, \*TB, BLK, DMR, TRQ

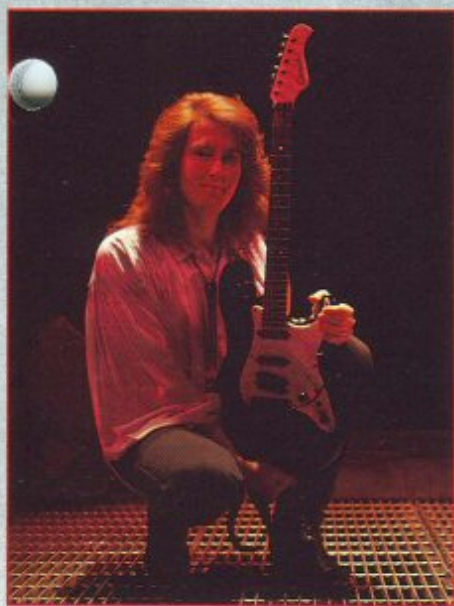


The Charvel TTX was designed in response to the growing interest in non-locking tremolo guitars. Using the latest technology, this new die-cast tremolo bridge is extremely reliable and features separate height adjustable saddles and an adjustment to control the arm's tension. The TTX also incorporates our new locking tuning gears which eliminate the need to wrap the string around the post of the tuner. This does away with any slipping that can occur at the post and helps keep your guitar better in tune.

The lower cutaway of the TTX has been cut all the way back for easy access to even the twenty fourth fret of the two octave, one piece Maple neck. The bridge pickup is equipped with a series/parallel switch which greatly increases its range of sonic capabilities.

#### TTX Neck Specs

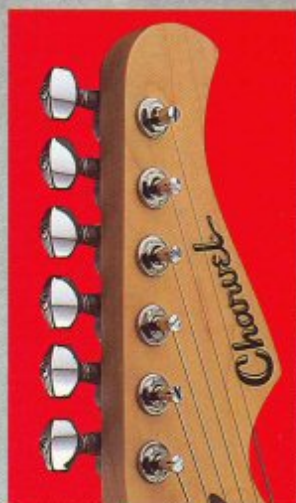
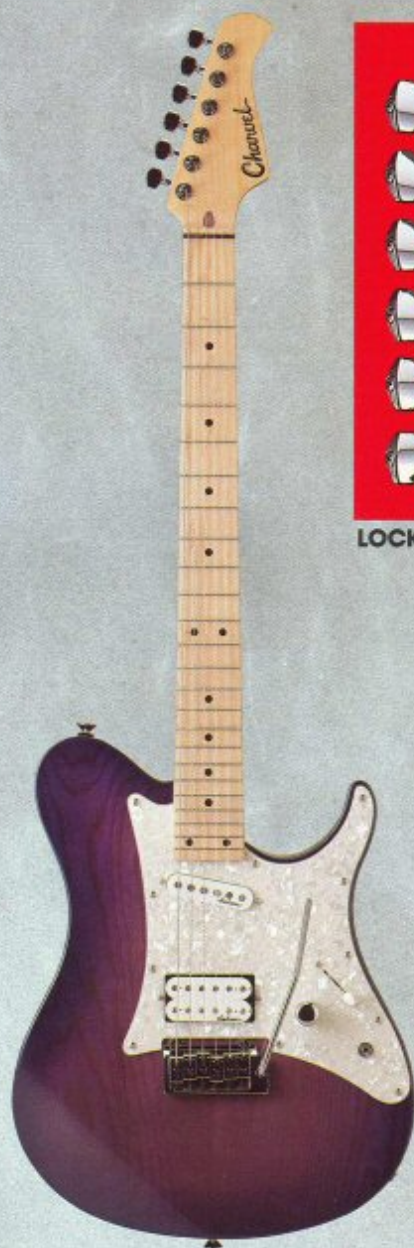
NUT WIDTH: 1 5/8"  
THICKNESS: 1st: 17mm  
" 12th: 20mm



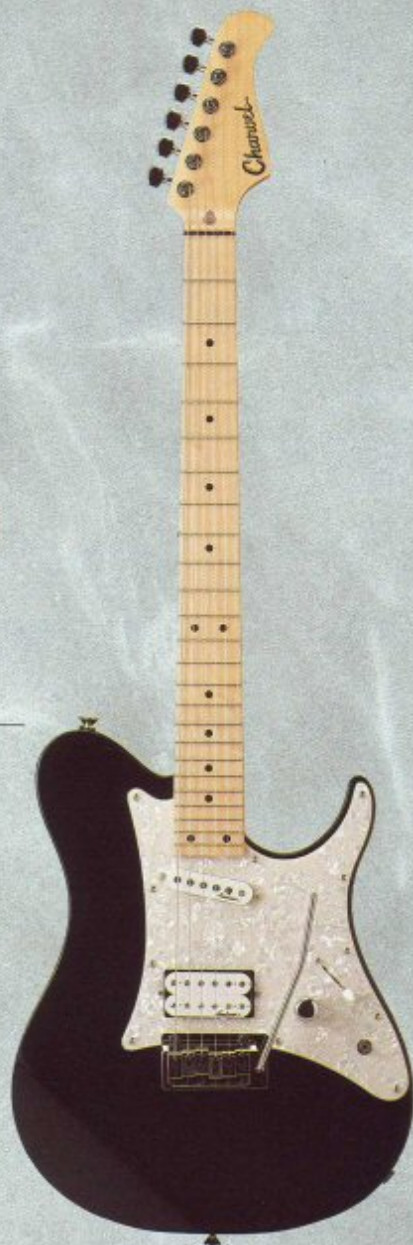
DON CARR — OAK RIDGE BOYS



JT-450/DIECAST BRIDGE



LOCKING TUNING GEARS



#### CHARVEL TTX

BODY: Basswood or 'Ash  
NECK: Eastern Maple  
FINGERBOARD: Rosewood or Maple  
SCALE: 25.5 inch 24 Frets  
BRIDGE: JT-450  
CONTROLS: Volume, 3-Way Toggle, 2-Way Mini  
ELECTRONICS: Passive, Mini Switch for Series Parallel  
PICKUPS: J-100VS (N), J-55 (B)  
FINISHES: \*BLK, \*TB, \*TR, BLK, DMB, DMR, MP

# LS1

One of several new Charvel models designed to address the increasing demand for instruments with more traditional features. Both the LS-1 Guitar and Bass use a traditional dovetail joint to attach the neck to the body. This type of construction yields a very distinct tonal response which make their overall sound very warm and resonant.

The LS-1 Bass features new active pickups with a very wide magnetic field to capture all of the depth and clarity that this instrument offers. Both guitar and bass models have rosewood fingerboards to further enhance their overall tonal response. The LS-1 Guitar uses our JT-390 fixed bridge for rock solid tuning stability and accurate intonation.

The timeless design and unsurpassed playability of the LS-1 will give you a whole new perspective on what you can expect from any instrument that bears the Charvel name.



SET NECK CONSTRUCTION

#### CHARVEL LS-1

**BODY:** Mahogany

**NECK:** Mahogany

**FINGERBOARD:** Rosewood

**SCALE:** 25.5 inch 22 Frets

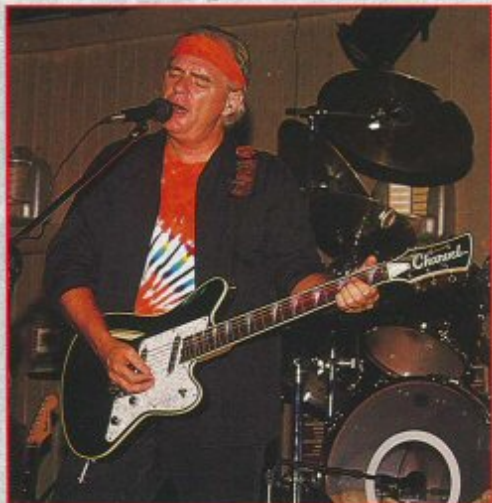
**BRIDGE:** JT-390

**CONTROLS:** Volume, Tone, 3-Way Toggle

**ELECTRONICS:** Passive

**PICKUPS:** J-50M (N), J-92C (B)

**FINISHES:** BLK, GLD, DMB



BOB SANFORD

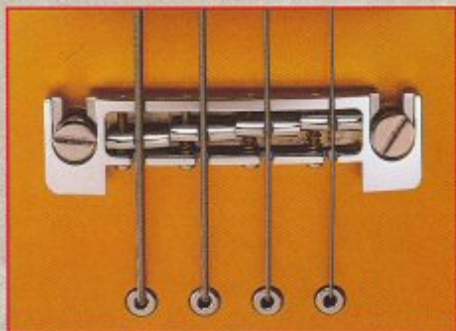
BUGS HENDERSON — SHUFFLEKINGS

#### NECK SPECS

**NUT WIDTH:** 1 1/2"

**THICKNESS:** 1st: 19mm

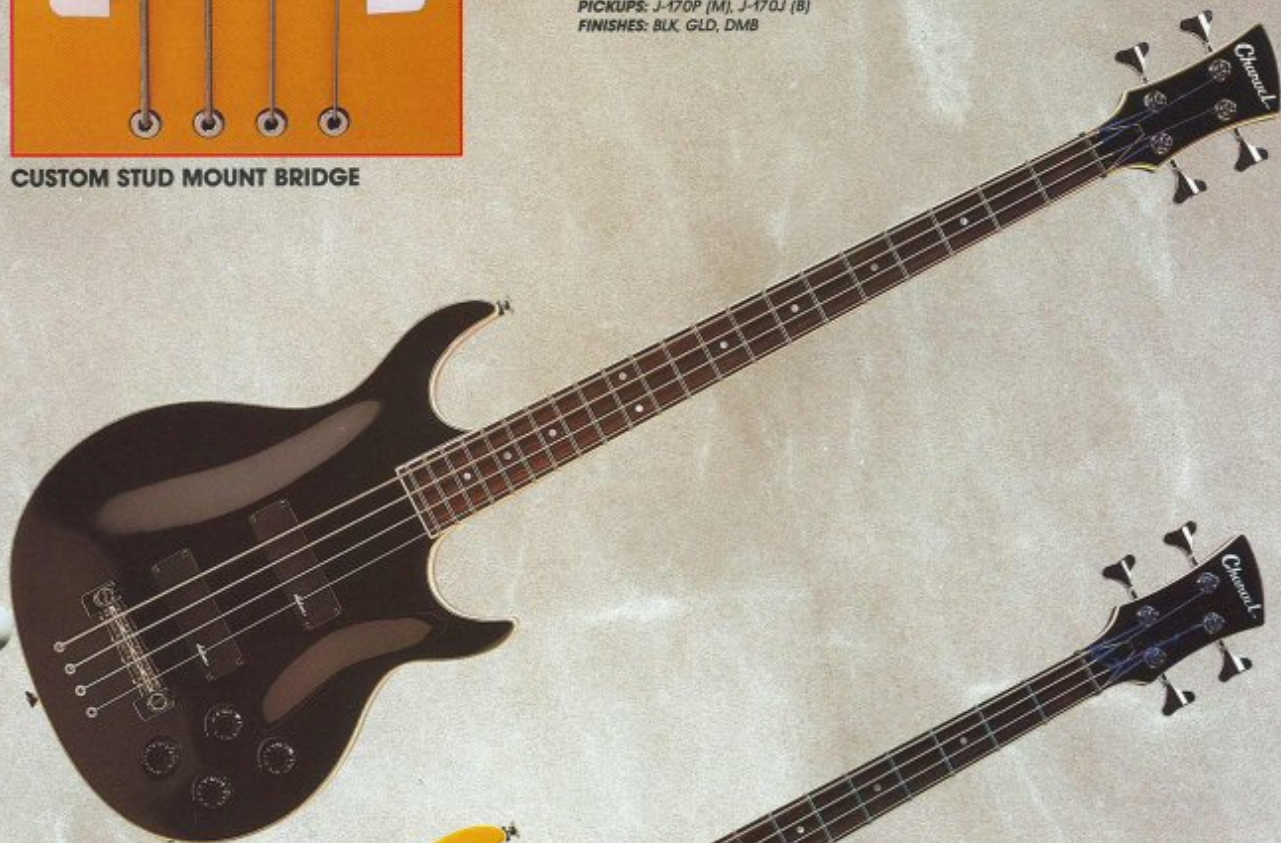
" 12th: 21mm



CUSTOM STUD MOUNT BRIDGE

#### CHARVEL LS-1 BASS

**BODY:** Mahogany  
**NECK:** Mahogany  
**FINGERBOARD:** Rosewood  
**SCALE:** 34 Inch 21 Frets  
**BRIDGE:** JB-540  
**CONTROLS:** Volume, Bass, Treble, Balance  
**ELECTRONICS:** Passive  
**PICKUPS:** J-170P (M), J-170J (B)  
**FINISHES:** BLK, GLD, DMB



#### BASS NECK SPECS

**NUT WIDTH:** 1 $\frac{15}{16}$ "  
**THICKNESS:** 1st: 19mm  
" 12th: 21mm



ALLEN WOODY — ALLMAN BROS.

# ATX

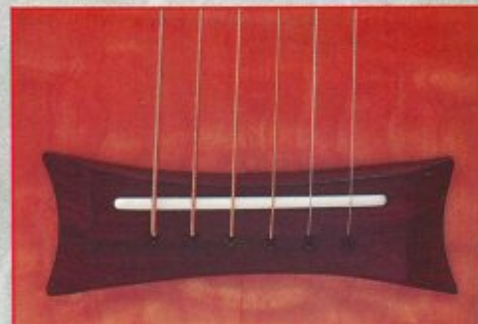
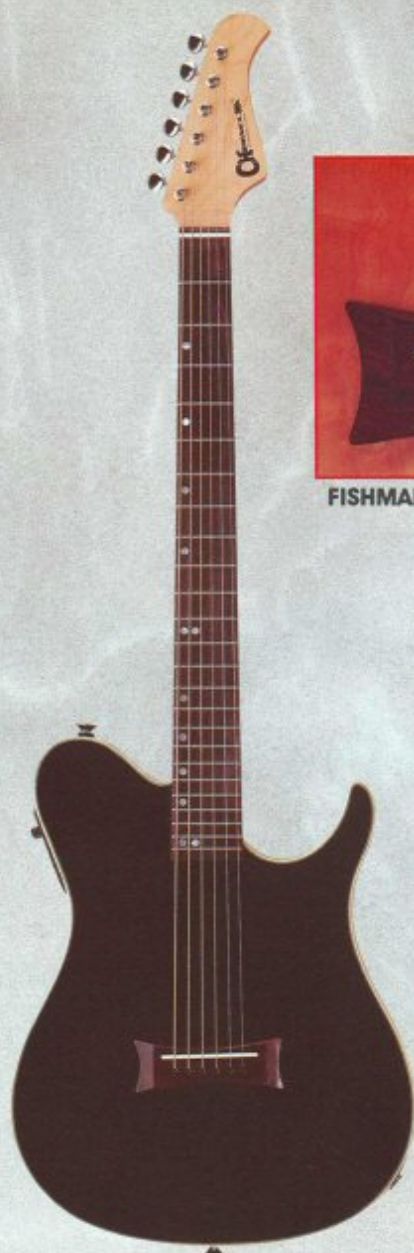
**D**esigned for the guitarist searching for a true acoustic sound on stage without the feedback problems associated with putting a mike or a pickup into a traditional acoustic guitar. These new light weight hybrids feature a Mahogany body which has been hollowed out so that the overall final resonance is similar to that of an acoustic instrument. A special thickness top is then attached to the chambered body which allows it to vibrate just enough to reproduce a true acoustic tone without feeding back when played through your amplifier or sound reinforcement system.

ATX Series guitars and basses utilize a rosewood bridge with a Fishman Transducer installed underneath the saddle. The strings are anchored through the body which further helps reduce unwanted vibration modes and also insures that the bridge saddle is in perfect contact with the transducer element at all times.

ATX models are available in three distinctive solid colors, or with an optional figured Maple top, in your choice of transparent finishes.

## NECK SPECS

NUT WIDTH: 1 5/8"  
THICKNESS: 1st: 19mm  
              12th: 21mm



FISHMAN™ SADDLE MOUNTED PICKUP

## CHARVEL ATX GUITAR

BODY: Mahogany w/Maple Top  
NECK: Eastern Maple  
FINGERBOARD: Rosewood  
SCALE: 25.5 inch 24 Frets  
BRIDGE: Rosewood  
CONTROLS: Volume, Bass, Mid, Treble  
ELECTRONICS: Charvel Active Pre Amp  
PICKUPS: Fishman AGP-125  
FINISHES: TBLK, TS, TV, BLK, DMB, DMR

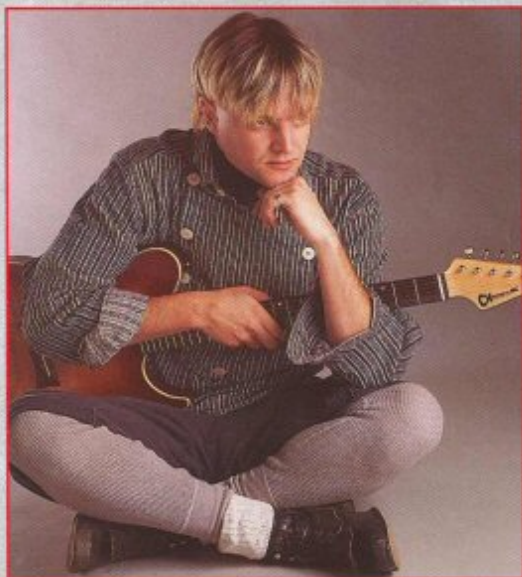


**CHARVEL ATX BASS**

**BODY:** Mahogany w/Maple Top  
**NECK:** Eastern Maple  
**FINGERBOARD:** Rosewood  
**SCALE:** 34 Inch 22 Frets  
**BRIDGE:** Rosewood  
**CONTROLS:** Volume, Bass, Mid, Treble  
**ELECTRONICS:** Charvel Active Pre Amp  
**PICKUPS:** Fishman AGP-125  
**FINISHES:** TBLK, TS, TV, BLK, DMB, DMR

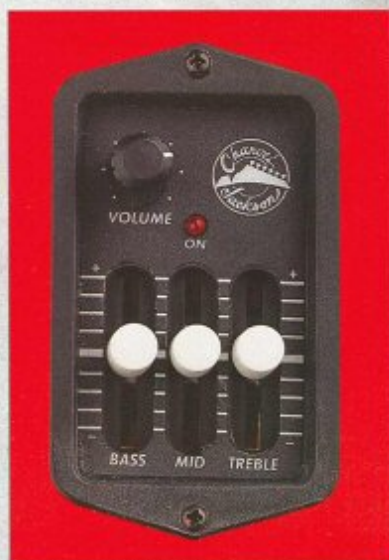
**NECK SPECS**

**NUT WIDTH:** 1 9/16"  
**THICKNESS:** 1st: 19mm  
                  12th: 24mm



**BRUCE DICKINSON — POP POPPINS**

BRIAN WILLECKE

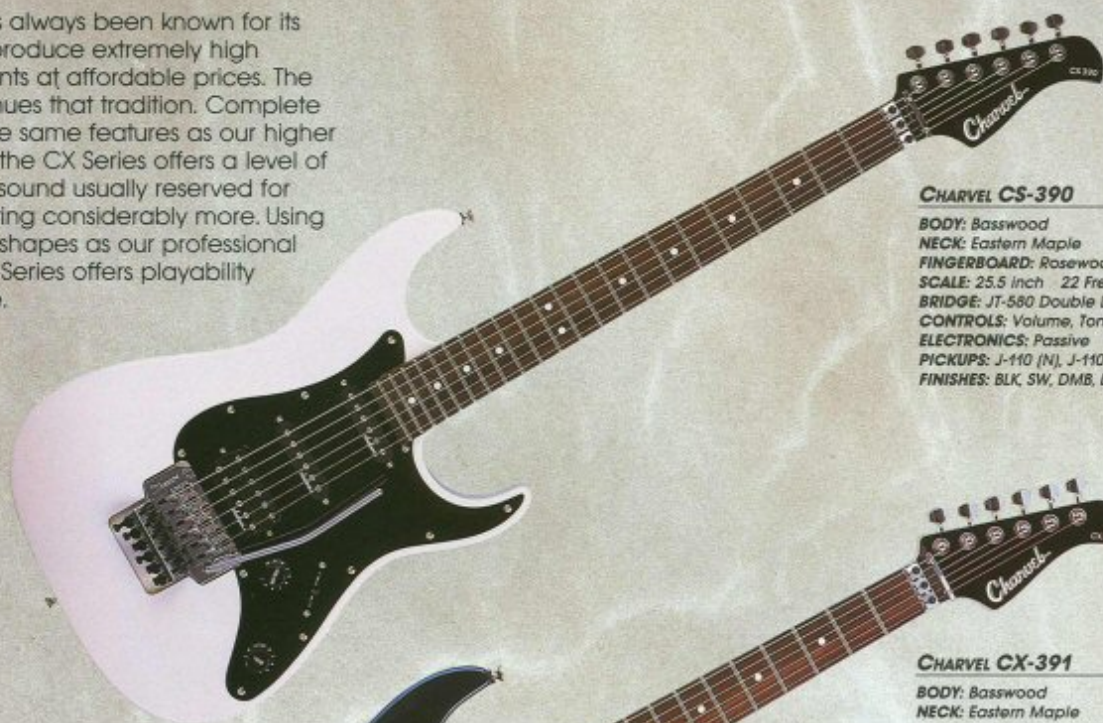


**CHARVEL 3 BAND E.Q.**



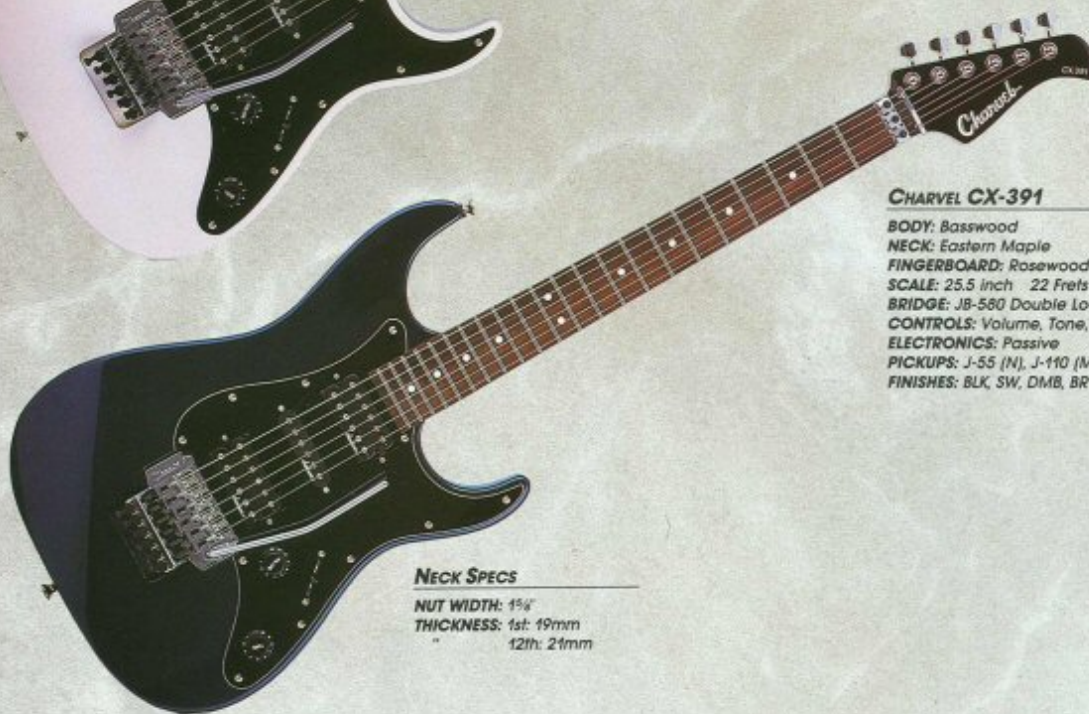
# CX SERIES

**C**harvel has always been known for its ability to produce extremely high quality instruments at affordable prices. The CX Series continues that tradition. Complete with many of the same features as our higher priced models, the CX Series offers a level of playability and sound usually reserved for instruments costing considerably more. Using the same neck shapes as our professional models, the CX Series offers playability second to none.



## CHARVEL CS-390

**BODY:** Basswood  
**NECK:** Eastern Maple  
**FINGERBOARD:** Rosewood  
**SCALE:** 25.5 inch 22 Frets  
**BRIDGE:** JT-580 Double Locking  
**CONTROLS:** Volume, Tone, 5-Way Switch  
**ELECTRONICS:** Passive  
**PICKUPS:** J-110 (N), J-110 (M), J-55 (B)  
**FINISHES:** BLK, SW, DMB, BR



## CHARVEL CX-391

**BODY:** Basswood  
**NECK:** Eastern Maple  
**FINGERBOARD:** Rosewood  
**SCALE:** 25.5 inch 22 Frets  
**BRIDGE:** JB-580 Double Locking  
**CONTROLS:** Volume, Tone, 5-Way Switch  
**ELECTRONICS:** Passive  
**PICKUPS:** J-55 (N), J-110 (M), J-55 (B)  
**FINISHES:** BLK, SW, DMB, BR

### NECK SPECS

**NUT WIDTH:** 1 5/8"  
**THICKNESS:** 1st: 19mm  
 12th: 21mm

**F**or over two years we have worked on coming up with a line of student amplifiers worthy of bearing the Charvel name. We are now pleased to announce the introduction of three new models. Both guitar amplifiers feature full channel switching and four band equalization. The bass amplifier features a ported cabinet for increased low end efficiency and also includes four bands of equalization. All three units provide a headphone jack for private practicing, and come complete with effects send and return jacks for adding your favorite effects unit. Power output for all three units is rated at a hefty twenty watts, which is more than enough to get your neighbors' attention!

# STUDENT AMPS



## CH200 AMP

**CHANNELS:** Two  
**HEADPHONE OUT:** Yes  
**REVERB:** No  
**POWER:** 20 Watts  
**EQ:** 4 Band  
**CABINET TYPE:** Open Back  
**EFFECTS LOOP:** Yes  
**OUTPUT TYPE:** Solid State



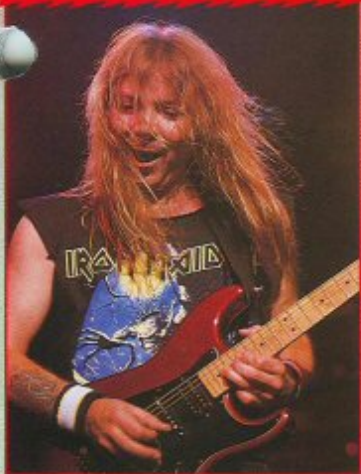
## CH200R AMP

**CHANNELS:** Two  
**HEADPHONE OUT:** Yes  
**REVERB:** Yes  
**POWER:** 20 Watts  
**EQ:** 4 Band  
**CABINET TYPE:** Open Back  
**EFFECTS LOOP:** Yes  
**OUTPUT TYPE:** Solid State



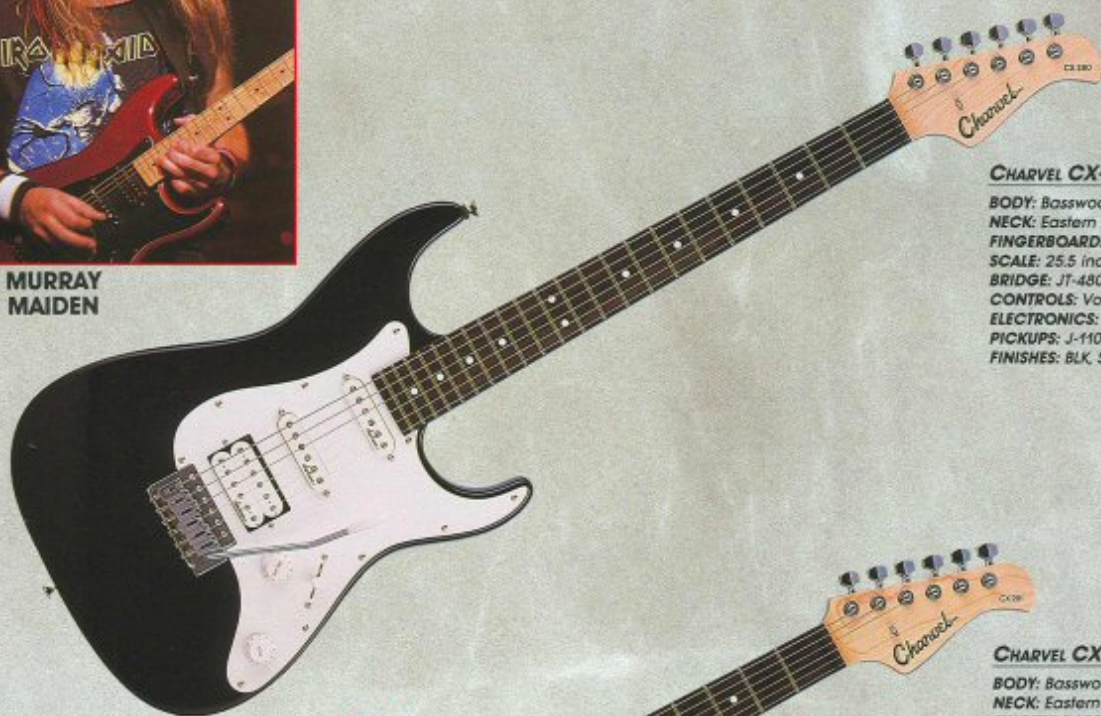
## CH200B Bass AMP

**CHANNELS:** One  
**HEADPHONE OUT:** Yes  
**REVERB:** No  
**POWER:** 20 Watts  
**EQ:** 4 Band  
**CABINET TYPE:** Ported  
**EFFECTS LOOP:** Yes  
**OUTPUT TYPE:** Solid State



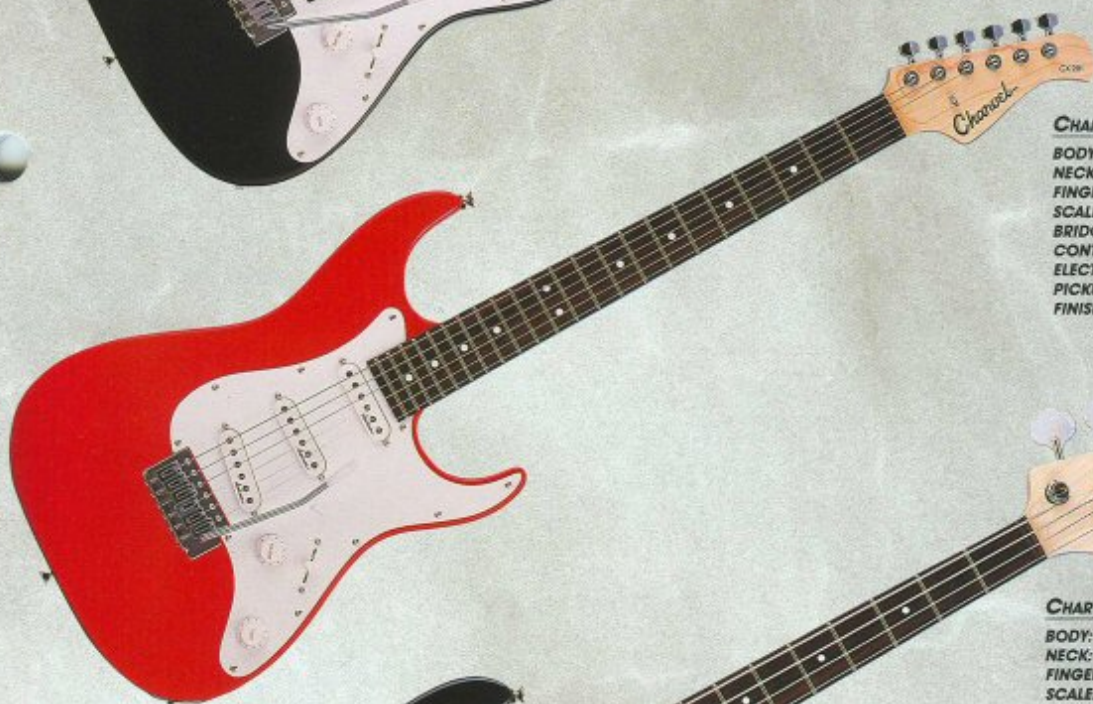
**DAVE MURRAY**  
**IRON MAIDEN**

ANTHONY STROPPA



**CHARVEL CX-290**

**BODY:** Basswood  
**NECK:** Eastern Maple  
**FINGERBOARD:** Rosewood  
**SCALE:** 25.5 inch 22 Frets  
**BRIDGE:** JT-480  
**CONTROLS:** Volume, Tone, 5-Way Switch  
**ELECTRONICS:** Passive  
**PICKUPS:** J-110 (N), J-110 (M), J-55 (B)  
**FINISHES:** BLK, SW, DMB, BR



**CHARVEL CX-291**

**BODY:** Basswood  
**NECK:** Eastern Maple  
**FINGERBOARD:** Rosewood  
**SCALE:** 25.5 inch 22 Frets  
**BRIDGE:** JT-480  
**CONTROLS:** Volume, Tone, 5-Way Switch  
**ELECTRONICS:** Passive  
**PICKUPS:** J-110 (N), J-110 (M), J-110 (B)  
**FINISHES:** BLK, SW, DMB, BR



**CHARVEL CX-490**

**BODY:** Poplar  
**NECK:** Eastern Maple  
**FINGERBOARD:** Rosewood  
**SCALE:** 34 inch 22 Frets  
**BRIDGE:** JB-140  
**CONTROLS:** Volume, Balance, Tone  
**ELECTRONICS:** Passive  
**PICKUPS:** J-30P (M), J-160 (B)  
**FINISHES:** BLK, SW, DMB, BR

**NECK SPECS**

**NUT WIDTH:** 1 1/4"  
**THICKNESS:** 1st: 19mm  
" 12th: 21mm



**SLANTED CUT HEEL**

# JACKSON PRO SERIES







Jackson guitars have an established reputation for being the choice of Rock and Metal guitarists around the world. The tremendous growth and popularity of Jackson guitars is based on giving guitarists the highest possible quality guitar for the right price.

For 1993, our design staff has created six new models for the Jackson Professional Series. These include several designs that have been previously only available from our Custom Shop. In addition to these, you will find our new Stealth HX Model which features a fixed bridge, and our new JTX Models which were developed with the more traditional player in mind.

From our roots as a small custom builder, Jackson has followed the American tradition of growth through determination, dedication, and creative drive. In response to unbelievable demand, we've expanded our two factories to provide high caliber instruments for musicians of all levels, from serious students to celebrated professionals.

Whatever model you chose, you can be sure that every one of our instruments is made with the utmost in design consideration, quality workmanship, and first class materials.



DAVID HAYES

FLATUS MAXIMUS — GWAR

# SOLOIST

Since the introduction of the Soloist, it has changed the way modern electric guitars look and play. At the time of its release, there were only two accepted body styles on the market. If you take a look now, most guitars being produced owe their origin to the Soloist. It was the first guitar design to square up the edges of the body and extend the cutaways for better access to the upper frets. These design innovations are what have made the Jackson Soloist the first choice of working guitarists the world over.

The Soloist features neck thru body construction, giving you noticeably better sustain over guitars with bolt on or glued in necks. This type of construction coupled with our slab cut fingerboards makes for a very rigid and stable neck which allows for extremely low action and fast playing.

The playability of the Soloist is even further enhanced by the use of our compound fingerboard radius which is specially compensated to allow for clean bends on the higher frets and solid chording in the lower positions. All of this adds up to an extremely reliable and great sounding guitar that will fulfill your needs in any playing situation.

## JACKSON SOLOIST PRO

**BODY:** Poplar  
**NECK:** Quartersawn Maple  
**FINGERBOARD:** Bound Ebony  
**SCALE:** 25.5 Inch 24 Frets  
**BRIDGE:** JT-590 Double Locking  
**CONTROLS:** Volume, Mid Boost, Tone, 5-Way Switch  
**ELECTRONICS:** Jackson JE-1200 Active Mid Boost Circuit  
**PICKUPS:** J-200 (N), J-200 (M), J-50M (B)  
**FINISHES:** PW, MB, DMB, BR

## NECK SPECS

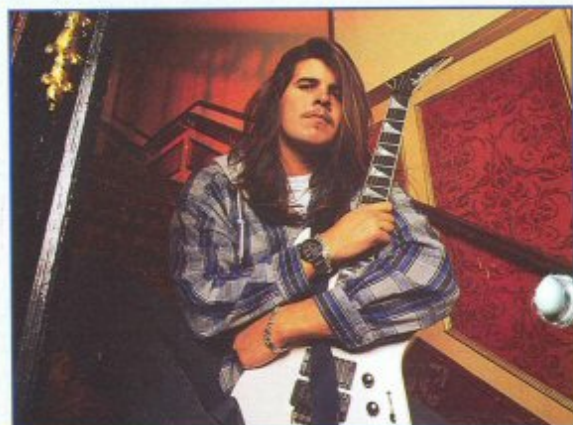
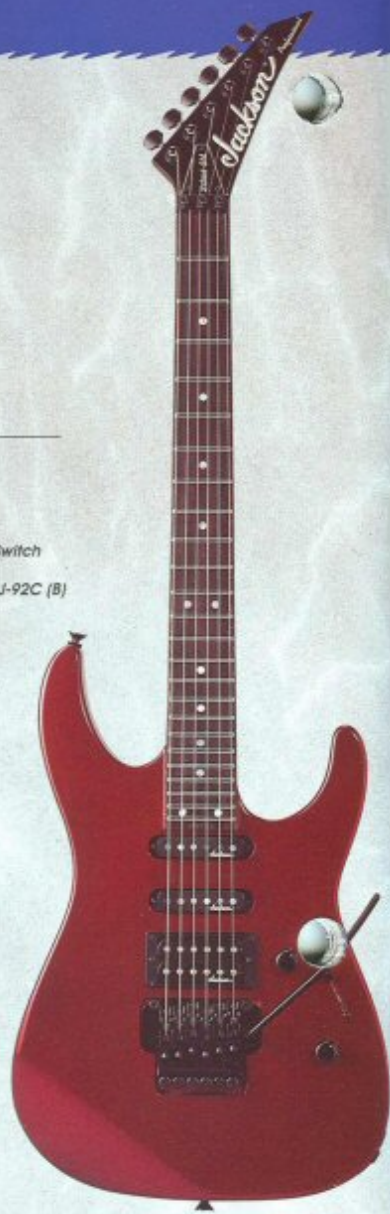
**NUT WIDTH:** 1 1/4"  
**THICKNESS:** 1st: 18mm  
 " 12th: 20mm

## JACKSON SOLOIST XL

**BODY:** Poplar  
**NECK:** Quartersawn Maple  
**FINGERBOARD:** Bound Rosewood  
**SCALE:** 25.5 inch 24 Frets  
**BRIDGE:** JT590 Double Locking  
**CONTROLS:** Volume, Tone, 5-Way Switch  
**ELECTRONICS:** Passive  
**PICKUPS:** J-100VS (N), J-100VS (M), J-92C (B)  
**FINISHES:** PW, MB, DMB, DMR

## JACKSON SOLOIST STD

**BODY:** Poplar  
**NECK:** Quartersawn Maple  
**FINGERBOARD:** Rosewood  
**SCALE:** 25.5 inch 24 Frets  
**BRIDGE:** JT-580 LP Double Locking  
**CONTROLS:** Volume, Tone, 5-Way Switch  
**ELECTRONICS:** Passive  
**PICKUPS:** J-100VS (N), J-100VS (M), J-92C (B)  
**FINISHES:** BLK, DMB, SW, DMR



MIKE CLARK — SUICIDAL TENDENCIES

JEFF TISMAN

# RHOADS

**D**esigned in collaboration with the late Randy Rhoads, this uniquely shaped instrument is still the first choice of "Metal" guitarists around the world. The Rhoads guitar was the first instrument produced to bear the Jackson name, and it still remains as the flagship of our line. With its unique tone and solid feel, the Rhoads Pro has become one of the few modern guitars to be commonly acknowledged as a contemporary classic.

There are three different Rhoads Models available in the Jackson Professional Series, including the Rhoads EX which is a bolt on neck version with a Floyd Rose Licensed double locking tremolo and two blazing hot

humbuckers for a great selection of monster tones. All three models have the same lightning fast neck shape and pickup compliment.

When playing a Jackson Rhoads, you are not only playing a great guitar, but a piece of musical history as well.

## JACKSON RHOADS PRO

**BODY:** Poplar  
**NECK:** Quartersawn Maple  
**FINGERBOARD:** Bound Ebony  
**SCALE:** 25.5 Inch 22 Frets  
**BRIDGE:** JT-590 Double Locking  
**CONTROLS:** Volume, Mid Boost, Tone, 3-Way Toggle  
**ELECTRONICS:** Jackson JE-1200 Active Mid Boost Circuit  
**PICKUPS:** J-50N (N), J-50M (B)  
**FINISHES:** BLK, DMB, SW, DMR

## JACKSON RHOADS STD

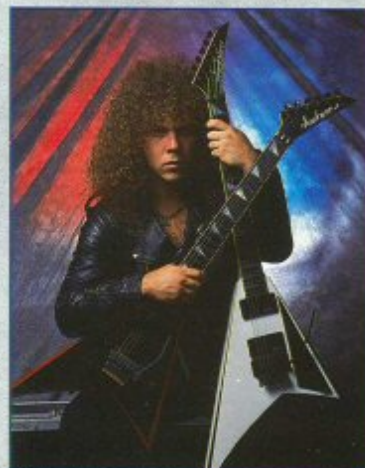
**BODY:** Poplar  
**NECK:** Quartersawn Maple  
**FINGERBOARD:** Rosewood  
**SCALE:** 25.5 Inch 22 Frets  
**BRIDGE:** JT-580 LP Double Locking  
**CONTROLS:** Volume, Volume, Tone, 3-Way Toggle  
**ELECTRONICS:** Passive  
**PICKUPS:** J-50N (N), J-50M (B)  
**FINISHES:** BLK, DMB, SW, DMR

## JACKSON RHOADS EX

**BODY:** Poplar  
**NECK:** Eastern Maple  
**FINGERBOARD:** Bound Ebony  
**SCALE:** 25.5 inch 22 Frets  
**BRIDGE:** J-580 Double Locking  
**CONTROLS:** Volume, 5-Way Switch  
**ELECTRONICS:** Passive  
**PICKUPS:** J-50N (N), J-50M (B)  
**FINISHES:** BLK, BR, CB, SW, STONE

## NECK SPECS

**NUT WIDTH:** 1 1/4"  
**THICKNESS:** 1st: 19mm  
 12th: 21mm



GEOFF THORPE — VICIOUS RUMORS

ANTHONY STROPPA

# KING V

Since its original release, the King V Custom has been one of the more popular body styles our Custom Shop offers. Over the past year its popularity has grown so rapidly that we have started building two new production models. One of the main reasons the King V has gotten so much attention is its use by Megadeth founder Dave Mustaine.

The King V Pro is a recreation of the Jackson Custom Shop guitar that Dave uses, including his fixed bridge arrangement. As a tribute to Dave and the success Megadeth are having, the King V Pro is being released as a signature series model for 1993.

The King V Std is a bolt on neck version with a Floyd Rose Licensed double locking bridge. If aggressive power metal is what makes your world turn, let us suggest a visit to your local Jackson dealer for a hands on try out of both new King V guitars.



GENE KIRKLAND

DAVE MUSTAINE — MEGADETH

## JACKSON KING V PRO - MUSTAINE

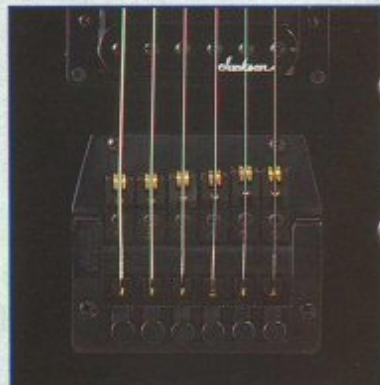
**BODY:** Poplar  
**NECK:** Quartersawn Maple  
**FINGERBOARD:** Bound Ebony  
**SCALE:** 25.5 inch 24 Frets  
**BRIDGE:** APM 3300  
**CONTROLS:** Volume, Volume, Tone, 3-Way Toggle  
**ELECTRONICS:** Passive  
**PICKUPS:** J-500XL (N), J-92C (B)  
**FINISHES:** BLK, SPARKLE SILVER

## JACKSON KING V STD

**BODY:** Poplar  
**NECK:** Eastern Maple  
**FINGERBOARD:** Rosewood  
**SCALE:** 25.5 inch 22 Frets  
**BRIDGE:** JT-580 Double Locking  
**CONTROLS:** Volume, 3-Way Toggle  
**ELECTRONICS:** Passive  
**PICKUPS:** J-50N (N), J-92C (B)  
**FINISHES:** BLK, CB, BR, SW

## NECK SPECS

**NUT WIDTH:** 1 1/4"  
**THICKNESS:** 1st: 19mm  
" 12th: 21mm



KAHLER™ FIXED BRIDGE

# STEALTH

**U**ltra sleek body styling coupled with our extremely fast playing 17mm neck make for a very well rounded and versatile guitar. The Stealth Series of guitars was created to bridge the gap between players who wanted a more streamlined body, but were afraid to give up any body mass which might have affected their sound. There is now a left handed version of the Stealth EX available so that all guitarists can now enjoy its sleek profile and fast neck.

This year we are introducing the new Stealth HX which offers a revised body shape with three Jackson J-75 Pickups. This pickup arrangement offers a unique set of tonal possibilities which have not been previously available in a production instrument. The Stealth HX features a fixed tuneomatic bridge for players who need an instrument without a tremolo.

No matter which Stealth Model you try, we are sure that you will be pleased with its very comfortable body design and wide range of sonic capabilities.



## JACKSON STEALTH XL

**BODY:** Ash  
**NECK:** Eastern Maple  
**FINGERBOARD:** Rosewood  
**SCALE:** 25.5 inch 22 Frets  
**BRIDGE:** JT-580 Double Locking  
**CONTROLS:** Volume, Tone, 5-Way Switch  
**ELECTRONICS:** Passive  
**PICKUPS:** J-100VS (N), J-100VS (M), J-92C (B)  
**FINISHES:** TA, TB, TR, TP



## JACKSON STEALTH HX

**BODY:** Basswood  
**NECK:** Eastern Maple  
**FINGERBOARD:** Rosewood  
**SCALE:** 25.5 inch 22 Frets  
**BRIDGE:** JT-390  
**CONTROLS:** Volume, Tone, 5-Way Switch  
**ELECTRONICS:** Passive  
**PICKUPS:** J-75 (N), J-75 (M), J-75 (B)  
**FINISHES:** BLK, DMB, DMR, DMV



## NECK SPECS

**NUT WIDTH:** 1 11/16"  
**THICKNESS:** 1st: 17mm  
 12th: 20mm

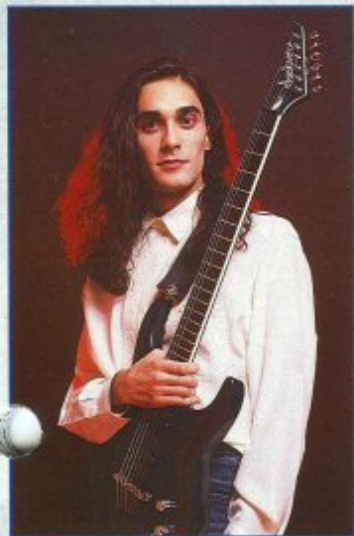


## JACKSON STEALTH EX

**BODY:** Basswood  
**NECK:** Eastern Maple  
**FINGERBOARD:** Rosewood  
**SCALE:** 25.5 inch 22 Frets  
**BRIDGE:** JT-580 Double Locking  
**CONTROLS:** Volume, Tone, 5-Way Switch  
**ELECTRONICS:** Passive  
**PICKUPS:** J-110 (N), J-110 (M), J-75 (B)  
**FINISHES:** BLK, DMB, DMR, STONE

## JACKSON STEALTH EX LEFTY (NOT SHOWN)

**BODY:** Basswood  
**NECK:** Eastern Maple  
**FINGERBOARD:** Rosewood  
**SCALE:** 25.5 inch 22 Frets  
**BRIDGE:** JT-580 Double Locking  
**CONTROLS:** Volume, Tone, 5-Way Switch  
**ELECTRONICS:** Passive  
**PICKUPS:** J-110 (N), J-110 (M), J-75 (B)  
**FINISHES:** BLK, DMB, DMR, STONE



MICK ROCK

FRANK ARESTI — FATES WARNING



# FUSION

Guitar players have long searched for an instrument that would combine the light string tension and percussive attack of a Les Paul with the overall brighter sound of a bolt on neck guitar. Our answer to this quest is the Fusion Series of guitars. All Fusion Series guitars have a slightly reduced scale length, which gives these guitars their light string tension and percussive attack, and because they are bolt on necks, they have that brighter overall sound. This combination has become so popular among today's players that we offer a very comprehensive range of Fusion Series Models with different body woods and pickup configurations.

The Fusion XL and Standard Models use our J-85 blade pickup in the bridge position for extremely hot and harmonically rich tonality. The middle and neck positions use J-200R hum-cancelling rail pickups for low noise and high output to match the high gain of the J-85 bridge pickup.



DAVE SHARMAN



### JACKSON FUSION XL

**BODY:** Basswood (\*Optional Flame Top)  
**NECK:** Eastern Maple  
**FINGERBOARD:** Bound Rosewood  
**SCALE:** 24.75 inch 24 Frets  
**BRIDGE:** JT-590 Double Locking  
**CONTROLS:** Volume, Tone, 5-Way Switch  
**ELECTRONICS:** Passive  
**PICKUPS:** J-200R (N), J-200R (M), J-85 (B)  
**FINISHES:** \*CSB, \*TB, \*TV, MB, DMB, SW, DMR



### JACKSON FUSION HH

**BODY:** Mahogany  
**NECK:** Eastern Maple  
**FINGERBOARD:** Bound Rosewood  
**SCALE:** 24.75 inch 24 Frets  
**BRIDGE:** JT-580 LP Double Locking  
**CONTROLS:** Volume, Tone, 3-Way Toggle  
**ELECTRONICS:** Passive  
**PICKUPS:** J-50N (N), J-92C (B)  
**FINISHES:** BLK, TR



### NECK SPECS

**NUT WIDTH:** 1 11/16"  
**THICKNESS:** 1st: 19mm  
 12th: 21mm



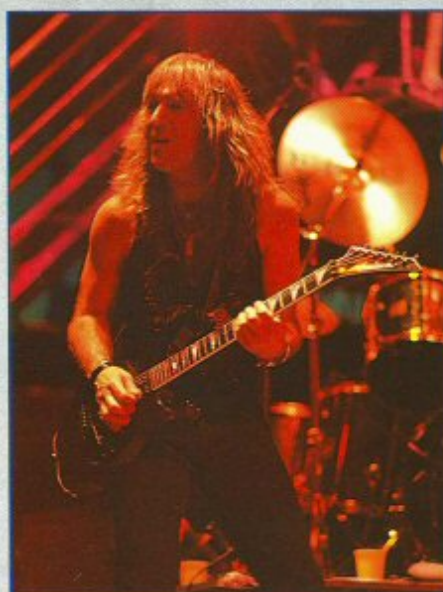
**JACKSON FUSION STD**

**BODY:** Basswood  
**NECK:** Eastern Maple  
**FINGERBOARD:** Rosewood  
**SCALE:** 24.75 inch 24 Frets  
**BRIDGE:** JT-590 Double Locking  
**CONTROLS:** Volume, Tone, 5-Way Switch  
**ELECTRONICS:** Passive  
**PICKUPS:** J-200R (N), J-200R (M), J-85 (B)  
**FINISHES:** BLK, DMR, CB, PW



**JACKSON FUSION EX**

**BODY:** Basswood  
**NECK:** Eastern Maple  
**FINGERBOARD:** Rosewood  
**SCALE:** 24.75 inch 24 Frets  
**BRIDGE:** JT-580 Double Locking  
**CONTROLS:** Volume, Tone, 5-Way Switch  
**ELECTRONICS:** Passive  
**PICKUPS:** J-110 (N), J-110 (M), J-75 (B)  
**FINISHES:** BLK, DMB, DMR, SW



LAURIE ALLEN

DAVE AMATO

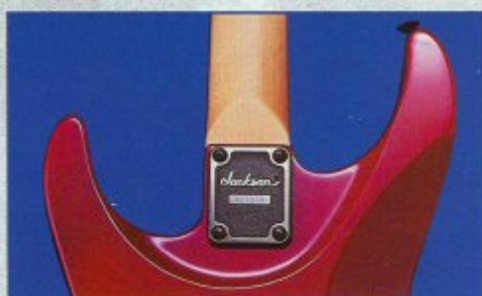


# DINKY

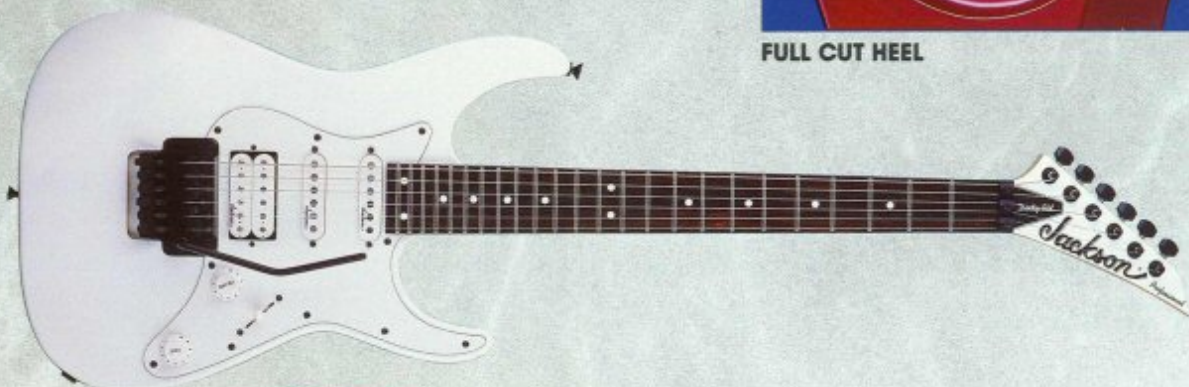


## JACKSON DINKY XL

**BODY:** Basswood (\*Optional Flame Top)  
**NECK:** Eastern Maple  
**FINGERBOARD:** Bound Rosewood  
**SCALE:** 25.5 inch 24 Frets  
**BRIDGE:** JT-590 Double Locking  
**CONTROLS:** Volume, Tone, 5-Way Switch  
**ELECTRONICS:** Passive  
**PICKUPS:** J-100VS (N), J-100VS (M), J-92C (B)  
**FINISHES:** \*CSB, \*TB, \*TR, \*TV, MB, PW, DIMB



FULL CUT HEEL



## JACKSON DINKY STD

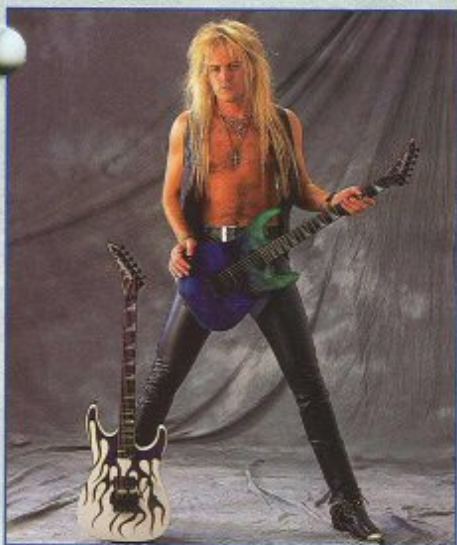
**BODY:** Basswood  
**NECK:** Eastern Maple  
**FINGERBOARD:** Rosewood  
**SCALE:** 25.5 inch 24 Frets  
**BRIDGE:** JT-590 Double Locking  
**CONTROLS:** Volume, Tone, 5-Way Switch  
**ELECTRONICS:** Passive  
**PICKUPS:** JT-100VS (N), J-100VS (M), J-92C (B)  
**FINISHES:** BLK, CB, DRM, SW



If you are a guitarist who demands the highest quality, most versatile instrument possible, the Jackson Dinky XL will surely meet your needs. A lightning fast, low profile neck with a bound Rosewood two octave fingerboard, Mother of Pearl Sharkfin inlays, and Basswood body make these guitars some of the most attractive and versatile guitars available to today's serious player.

The specifications of the Dinky Reverse are the result of combining the most requested features available from our Custom Shop and putting them all together in one guitar. The results speak for themselves, as the Dinky Reverse is now one of our most popular models.

All Dinky Models use our 17mm lightning fast low profile neck shape, and many models feature a full 24 fret, two octave fingerboard. Jackson was the first company to use Basswood as a body material because of its even and rich tone. All Dinky Models use American Basswood for their bodies because of its superior tone and light weight.

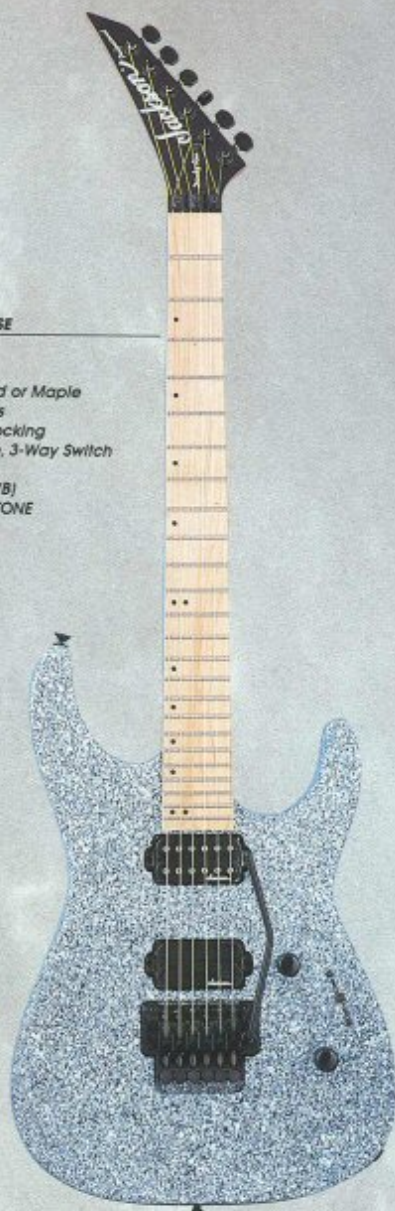


**DOUG ALDRICH — BAD MOON RISING**



**JACKSON DINKY REVERSE**

**BODY:** Basswood  
**NECK:** Eastern Maple  
**FINGERBOARD:** Rosewood or Maple  
**SCALE:** 25.5 Inch 24 Frets  
**BRIDGE:** JT-590 Double Locking  
**CONTROLS:** Volume, Tone, 3-Way Switch  
**ELECTRONICS:** Passive  
**PICKUPS:** J-80C (N), J-85 (B)  
**FINISHES:** BLK, DMV, CB, STONE



**DINKY  
 NECK SPECS**

**NUT WIDTH:** 1 1/4"  
**THICKNESS:** 1st: 17mm  
 " 12th: 20mm



**JACKSON DINKY EX**

**BODY:** Basswood  
**NECK:** Eastern Maple  
**FINGERBOARD:** Rosewood  
**SCALE:** 25.5 inch 24 Frets  
**BRIDGE:** JT-580 Double Locking  
**CONTROLS:** Volume, Tone, 5-Way Switch  
**ELECTRONICS:** Passive  
**PICKUPS:** J-55 (N), J-110 (M), J-55 (B)  
**FINISHES:** BLK, DMV, DMR, SW

# JTX

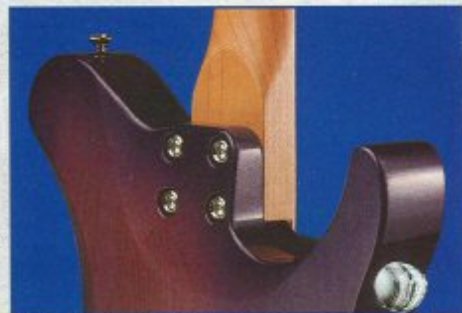
**H**ighly resonant Basswood or Ash bodies, plus one piece Maple neck construction set the new JTX Guitar apart from all the others in its class. This very moderately priced guitar includes a mini switch for selecting series or parallel modes for the bridge pickup, giving it even greater sonic flexibility. The deep lower cutaway and new neck mounting make access to even the highest fret effortless.

The full two octave neck is typical of the quality and workmanship you expect from a Jackson, and is uniquely suited to today's style of fast paced playing. Add to this our JT-580 Floyd Rose Licensed Tremolo System and you have a state of the art metal machine.



## JACKSON JTX

**BODY:** Basswood or \*Ash  
**NECK:** Eastern Maple  
**FINGERBOARD:** Maple  
**SCALE:** 25.5 inch 24 Frets  
**BRIDGE:** JT-580 Double Locking  
**CONTROLS:** Volume, 3-Way Toggle, 2-Way Mini Switch  
**ELECTRONICS:** Passive, 2-Way Mini Switch for Series Parallel  
**PICKUPS:** J-100VS (N), J-55 (B)  
**FINISHES:** \*TBUK, \*TPP, \*TB, \*TR, BLK, DMB, DMR, MAG



FULL ACCESS HEEL

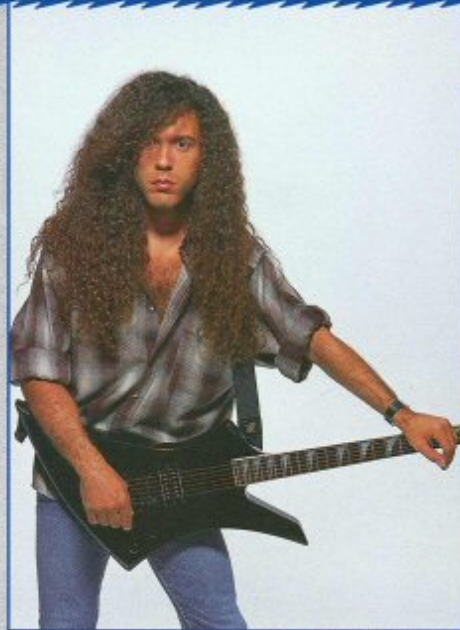
## JTX NECK SPECS

NUT WIDTH: 1 5/8"  
THICKNESS: 1st: 17mm  
              12th: 20mm

Like the Jackson King V, the Kelly has only previously been available on a special order basis from The Custom Shop. This new version has been added due to the revived interest of guitarists in unusually shaped instruments. Many players have realized that different shaped guitars have an overall different sonic signature than their conventional shaped counterparts. Like our Rhoads and King V models, the Kelly has a distinct voice of its own which cannot be duplicated by a normal sized body.

The cross section of the neck has been custom shaped to allow for lightning fast runs, and the highly polished frets make bends and harmonics more accurate when you reach for them.

The Kelly Standard uses our Low Profile JT-580 double locking tremolo system, combined with our enhanced midrange J-92C pickup in the bridge position, to bring out the aggressive nature of the Kelly's unusual body shape.



NIEL ZLOZOWER

MARTY FRIEDMAN — MEGADETH



#### JACKSON KELLY STANDARD

**BODY:** Poplar  
**NECK:** Eastern Maple  
**FINGERBOARD:** Rosewood  
**SCALE:** 25.5 inch 24 Frets  
**BRIDGE:** JT-580 LP Double Locking  
**CONTROLS:** Volume, 3-Way Toggle  
**ELECTRONICS:** Passive  
**PICKUPS:** J-50N (N), J-92C (B)  
**FINISHES:** BLK, DMB, DMR, DMV

#### KELLY NECK SPECS

**NUT WIDTH:** 1<sup>11</sup>/<sub>16</sub>"  
**THICKNESS:** 1st: 17mm  
" 12th: 20mm

# INFINITY



Classic set neck construction using the finest grades of African Mahogany, combined with a full three quarter inch figured Maple top, bring a rich tonal warmth to the Infinity Pro which you would only expect to hear from instruments costing twice the price. Instruments using this style of construction have always been noted for their great sustain and harmonic richness, and the Infinity Pro is no exception.

The Infinity XL shares the same body shape, but with a bound Basswood body and bolt on Eastern Maple neck, which give it a brighter tonality and lighter weight. Both Models use our JT-590 double locking tremolo system and genuine Abalone position markers.

The neck position pickups in both models were designed by our staff to have the same warm sonic characteristics as vintage humbuckers. Jackson J-92C humbuckers are used in the bridge position for increased output and drive.

## JACKSON INFINITY XL

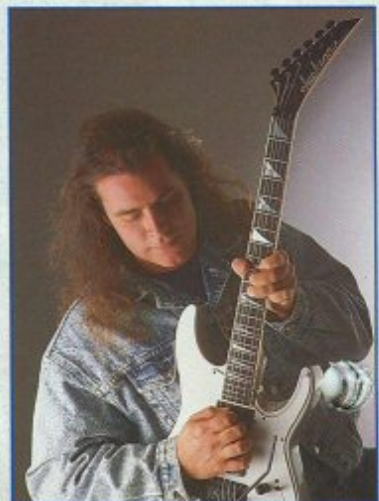
**BODY:** Basswood  
**NECK:** Eastern Maple  
**FINGERBOARD:** Rosewood  
**SCALE:** 25.5 inch 22 Frets  
**BRIDGE:** JT-590 Double Locking  
**CONTROLS:** Volume, Tone, 3-Way Toggle  
**ELECTRONICS:** Passive  
**PICKUPS:** J-50M (N), J-92C (B)  
**FINISHES:** BLK, DMB, DMR, MAG

## JACKSON INFINITY PRO

**BODY:** Mahogany w/Maple Top  
**NECK:** Mahogany  
**FINGERBOARD:** Rosewood  
**SCALE:** 25.5 inch 22 Frets  
**BRIDGE:** JT-590 Double Locking  
**CONTROLS:** Volume, Tone, 3-Way Toggle  
**ELECTRONICS:** Passive  
**PICKUPS:** J-50M (N), J-92C (B)  
**FINISHES:** CSB, TB, TR, TBLK

## NECK SPECS

**NUT WIDTH:** 4 1/8"  
**THICKNESS:** 1st: 20mm  
 " 12th: 22mm



FRANK STEPANEK — BLACK UHRU

BRIAN WILLECKE

# FUTURA

The Futura Bass offers today's working bassist a combination of features never found before in a professional instrument for such an extremely reasonable price. Their beautifully contoured bodies and ultra fast necks have made them favorites among serious bassists playing all styles of music.

The Futura XL utilizes neck thru body construction for even string response and improved low end performance. The Futura XL may be ordered in your choice of either Australian Lacewood, which offers lighter weight and a somewhat brighter tone or Maple construction, which offers a bigger midrange tone. The Futura EX is a bolt on neck version, and offers the same exceptional low end response and high string definition of the more expensive neck thru models.

## JACKSON FUTURA XL

**BODY:** \*Lacewood or Maple  
**NECK:** Lacewood or Quartersawn Maple  
**FINGERBOARD:** Ebony  
**SCALE:** 34 inch 21 Frets  
**BRIDGE:** JB-440  
**CONTROLS:** Volume, Bass, Treble, Balance  
**ELECTRONICS:** Jackson JE-2000 Active Circuit  
**PICKUPS:** J-20 (M), J150VS (B)  
**FINISHES:** \*NL, \*CIN, \*CL, MBK, DMR, PW



## JACKSON FUTURA EX

**BODY:** Poplar  
**NECK:** Eastern Maple  
**FINGERBOARD:** Rosewood  
**SCALE:** 34 inch 22 Frets  
**BRIDGE:** JB-340  
**CONTROLS:** Volume, Balance, Tone  
**ELECTRONICS:** Passive  
**PICKUPS:** J-20 (M), J150VS (B)  
**FINISHES:** BLK, DMB, MAG, SW

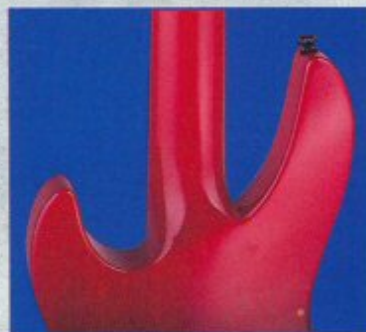


## NECK SPECS

**NUT WIDTH:** 1 1/2"  
**THICKNESS:** 1st: 20mm  
12th: 23mm

## JACKSON FUTURA EX LEFTY (NOT SHOWN)

**BODY:** Poplar  
**NECK:** Eastern Maple  
**FINGERBOARD:** Rosewood  
**SCALE:** 34 inch 22 Frets  
**BRIDGE:** JB-340  
**CONTROLS:** Volume, Balance, Tone  
**ELECTRONICS:** Passive  
**PICKUPS:** J-20 (M), J150VS (B)  
**FINISHES:** BLK, DMB, MAG, SW



NECK THRU CONSTRUCTION

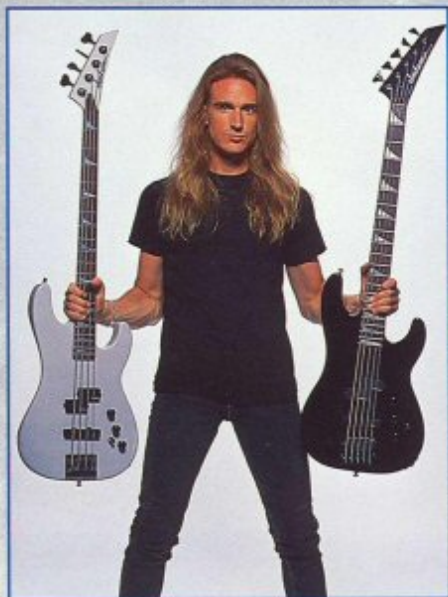
# CONCERT

## NECK SPECS

NUT WIDTH: 1 1/4"  
THICKNESS: 1st: 19mm  
12th: 21mm

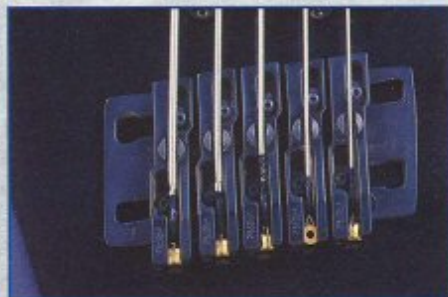
The Jackson Concert Bass has long been the choice of bassists looking for a well balanced instrument with a warm yet powerful sound. Now available in three different variations, including a five string and a very affordable four string version which all share the same great looks and effortless playability. The Concert V features active electronics for a wide range of tonal possibilities, and a machined steel bridge which offers individual height adjustment and string spacing for all five strings.

Fully bound Rosewood fingerboards inlaid with mother of pearl Jackson Sharkfin inlays are used on the Concert XL and Concert V models to further enhance their great looks. The double action tempered steel truss rod found in all Jackson necks make our basses extremely reliable, even under the harshest of touring conditions.



NEIL ZLOZOWER

DAVE ELLEFSON — MEGADETH



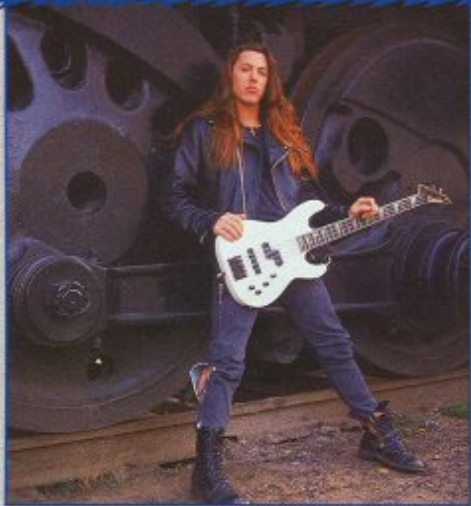
KAHLER™ 2440 BASS BRIDGE



### JACKSON CONCERT XL

**BODY:** Poplar  
**NECK:** Eastern Maple  
**FINGERBOARD:** Bound Rosewood  
**SCALE:** 34 inch 22 Frets  
**BRIDGE:** JB-440  
**CONTROLS:** Volume, Balance, Tone  
**ELECTRONICS:** Passive  
**PICKUPS:** J-20 (M), J-150VS (B)  
**FINISHES:** MBK, DMB, DMR, PW





ROB LETTIERI

BRIAN PERRY — DIRTY LOOKS

**JACKSON CONCERT V**

**BODY:** Poplar  
**NECK:** Eastern Maple  
**FINGERBOARD:** Bound Rosewood  
**SCALE:** 34 inch 24 Frets  
**BRIDGE:** APM 2450  
**CONTROLS:** Volume, Bass, Treble, Balance  
**ELECTRONICS:** Jackson JE-2500 Active Circuit  
**PICKUPS:** J-25 (M), J-155 (B)  
**FINISHES:** MBK, DMB, DMR, PW



**NECK SPECS**

**NUT WIDTH:** 1 1/2"  
**THICKNESS:** 1st: 19mm  
 " 12th: 21mm



**JACKSON CONCERT EX**

**BODY:** Poplar  
**NECK:** Eastern Maple  
**FINGERBOARD:** Rosewood  
**SCALE:** 34 inch 22 Frets  
**BRIDGE:** JB-340  
**CONTROLS:** Volume, Balance, Tone  
**ELECTRONICS:** Passive  
**PICKUPS:** J-20 (M), J150VS (B)  
**FINISHES:** BLK, CB, BR, SW, STONE

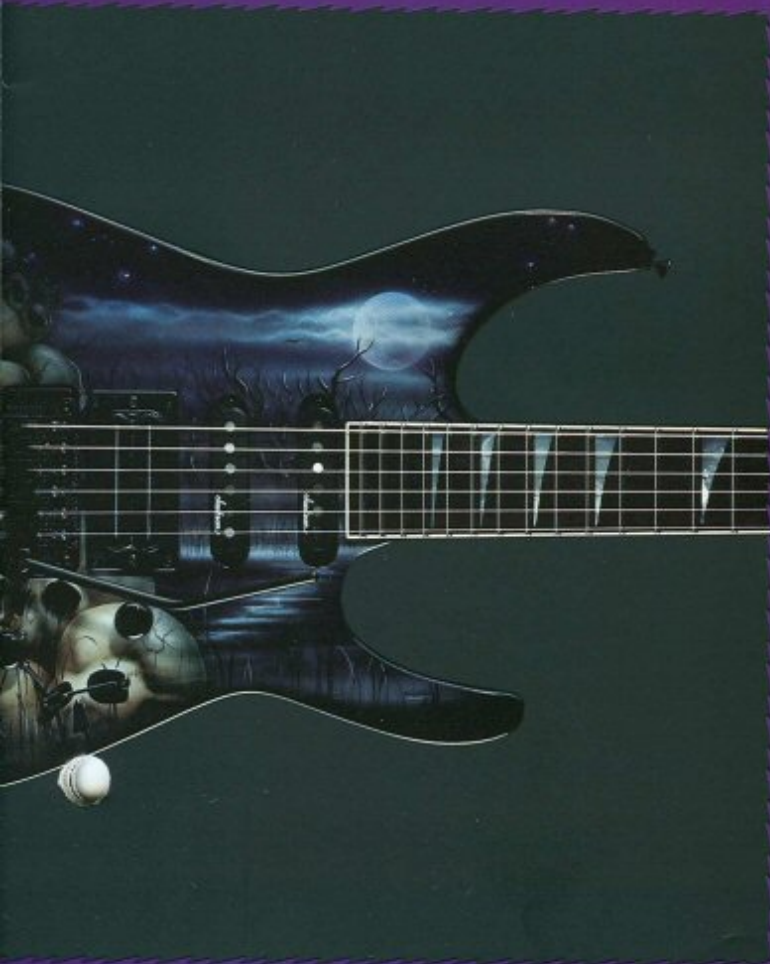
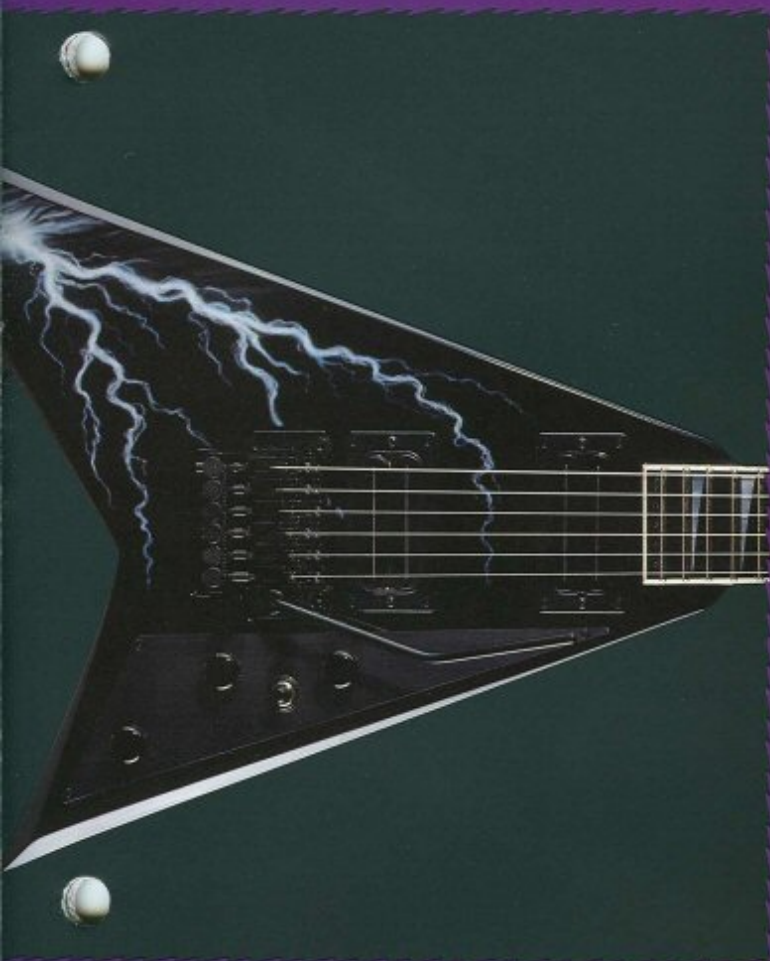
**NECK SPECS**

**NUT WIDTH:** 1 1/2"  
**THICKNESS:** 1st: 19mm  
 " 12th: 21mm

# JACKSON U.S.A.







**T**he "Made in the U.S.A." label is the symbol of innovation and quality in electric guitars. Jackson guitars were born in America, and all of our designs are developed here. From the initial success of our first Rhoads model, American made Jacksons have rocketed to the status of being the most sought after electric guitars in the world.

Because of the enormous number of hours it takes to build a one-of-a-kind custom guitar, Jackson Custom Shop instruments have been limited to use by serious professionals who could afford them. The Jackson U.S.A. Series was created so that a larger number of players could own one of our hand-crafted American instruments.

Each Jackson U.S.A. Series instrument is completely hand made in our California facility using the same standards and high quality materials as our custom instruments. We have standardized the hardware and pickups, allowing us to build them in small production lots, which considerably lowers their cost.

Jackson U.S.A. Series instruments are available in four different models, and each can be ordered in your choice of fifteen airbrushed graphic finishes.

**Soloist Custom** - Neck thru body construction with bound Ebony two octave fingerboard with Mother of Pearl Sharkfin inlays. Twenty four highly polished jumbo frets and a fully recessed JT-590 tremolo system make the Soloist Custom a player's dream.

**Dinky Custom** - Bolt on neck version of the Soloist Custom for the player who desires a bolt on neck instrument with all of the deluxe features normally associated with our neck thru body designs.

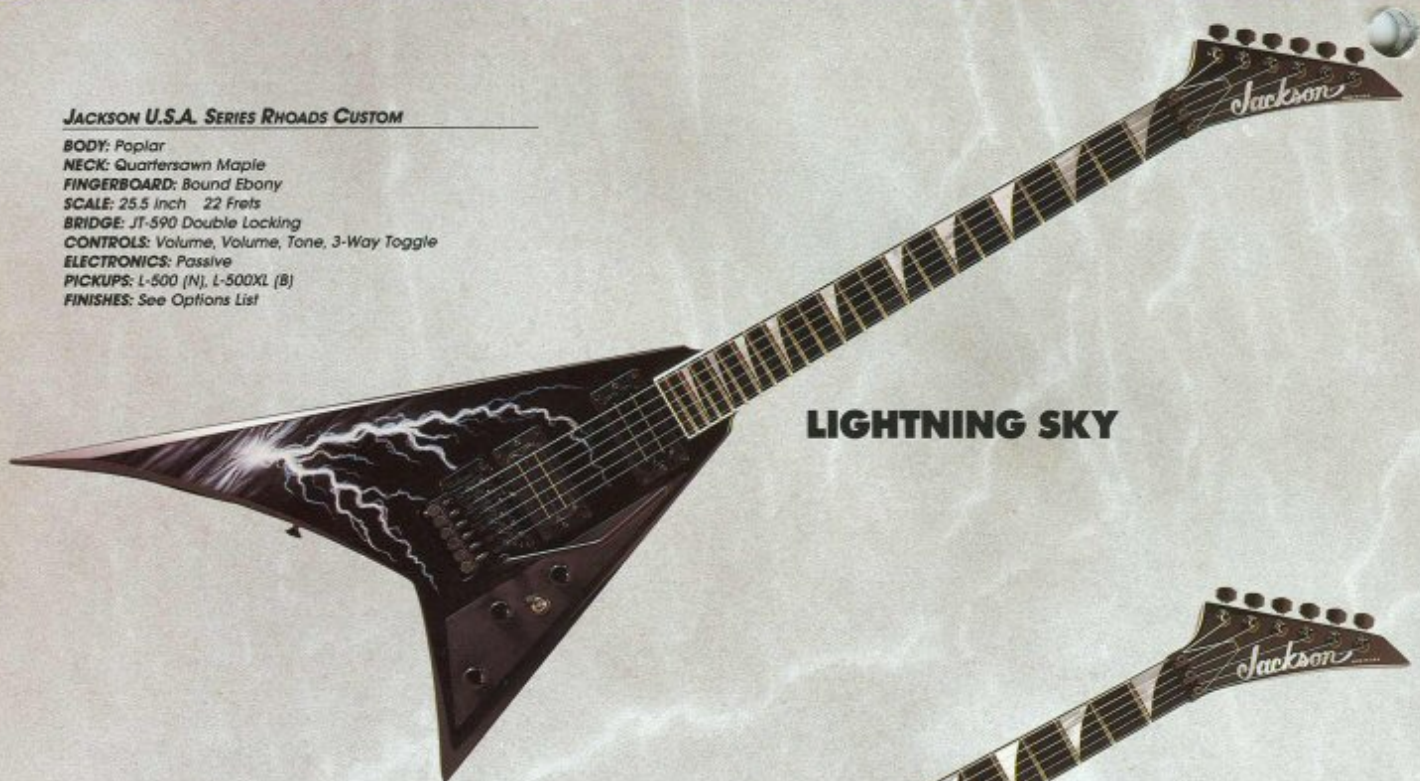
**Rhoads Custom** - Genuine handmade U.S.A. Randy Rhoads with offset V-style body featuring contoured bevels and front mounted control plate. The new 500 Series pickups add even more output and sonic roar than previously available models. Neck thru body construction for great sustain and even string response.

**Concert Custom** - Neck thru body construction with an extremely rigid center section make the Concert Custom Bass a reliable performer for any type of aggressive music or playing style. EMG Pickups are used as standard equipment for wide band, low noise performance in any situation.

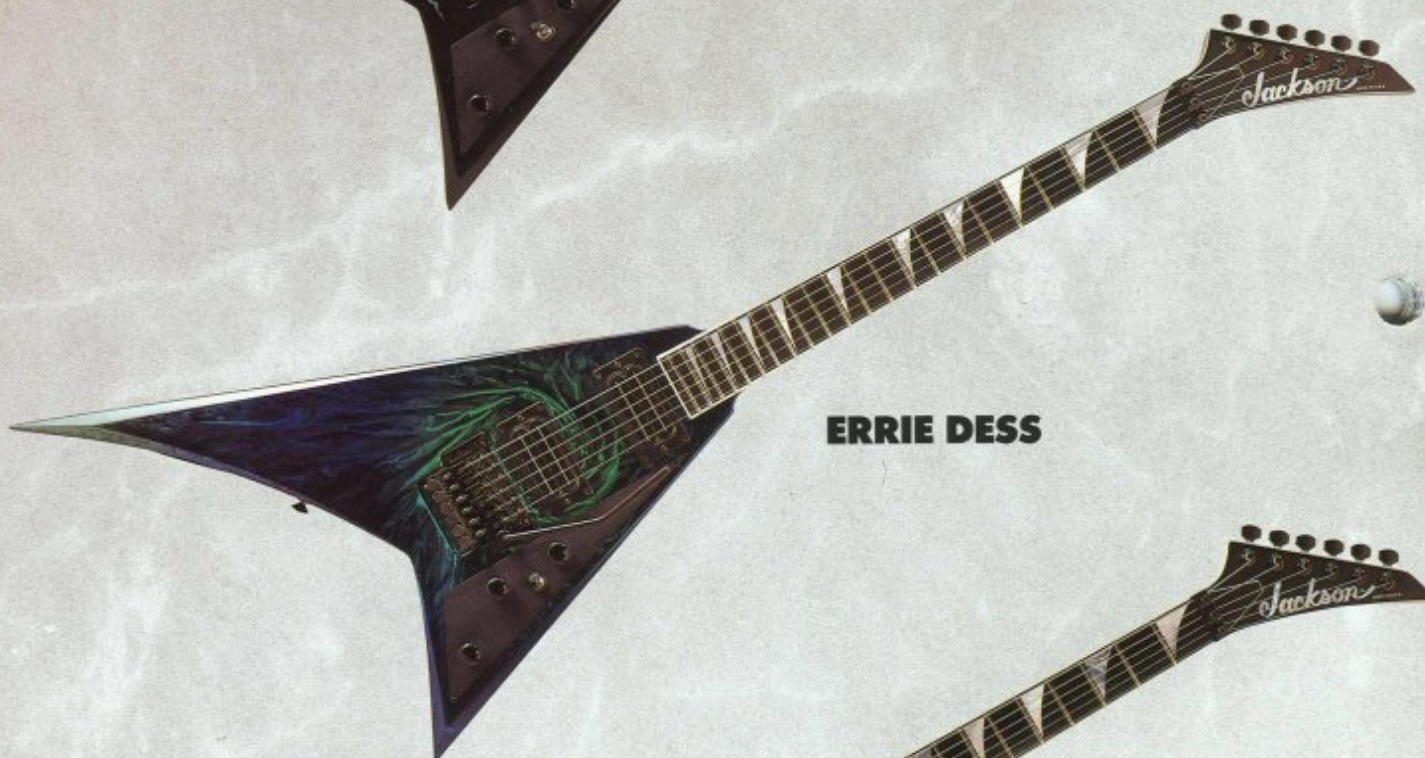
# U.S.A. GRAPHICS

## JACKSON U.S.A. SERIES RHOADS CUSTOM

**BODY:** Poplar  
**NECK:** Quartersawn Maple  
**FINGERBOARD:** Bound Ebony  
**SCALE:** 25.5 Inch 22 Frets  
**BRIDGE:** JT-590 Double Locking  
**CONTROLS:** Volume, Volume, Tone, 3-Way Toggle  
**ELECTRONICS:** Passive  
**PICKUPS:** L-500 (N), L-500XL (B)  
**FINISHES:** See Options List



**LIGHTNING SKY**



**ERRIE DESS**



**BLACK & WHITE DRAGON**

### RHOADS CUSTOM NECK SPECS

**NUT WIDTH:** 1 $\frac{1}{4}$ "  
**THICKNESS:** 1st: 19mm  
12th: 21mm

**JACKSON U.S.A. SERIES CONCERT BASS CUSTOM**

**BODY:** Poplar

**NECK:** Quartersawn Maple

**FINGERBOARD:** Bound Ebony

**SCALE:** 34 inch 21 Frets

**BRIDGE:** JB-340

**CONTROLS:** Volume, Volume, Tone, Balance

**ELECTRONICS:** Active EMG

**PICKUPS:** EMG P (M), EMG J (B)

**FINISHES:** See Options List



**CORAL SEA**



**TURQUOISE STONE**



**HOLO FLAKE ON BLACK**

**CONCERT BASS  
CUSTOM NECK SPECS**

**NUT WIDTH:** 1 $\frac{1}{4}$ "

**THICKNESS:** 1st: 19mm

" 12th: 21mm

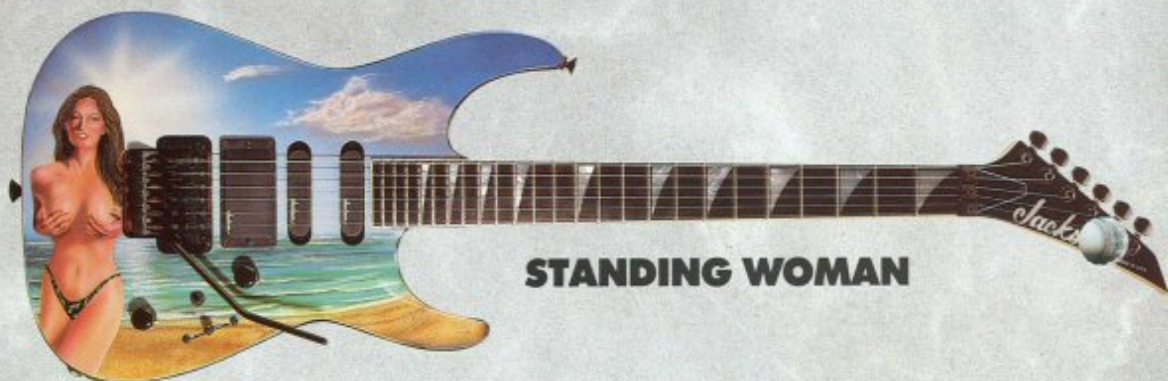
# U.S.A. GRAPHICS

## JACKSON U.S.A. SERIES DINKY CUSTOM

**BODY:** Basswood  
**NECK:** Quartersawn Maple  
**FINGERBOARD:** Bound Ebony  
**SCALE:** 25.5 inch 24 Frets  
**BRIDGE:** JT-590 Dpuble Locking  
**CONTROLS:** Volume, Tone, 5-Way Switch  
**ELECTRONICS:** Passive  
**PICKUPS:** J-100VS (N), J-100VS (M), L-500XL (B)  
**FINISHES:** See Options List



**MULTI COLORED DRAGON**



**STANDING WOMAN**



**SPHERES**



**SUNSET**

### NECK SPECS

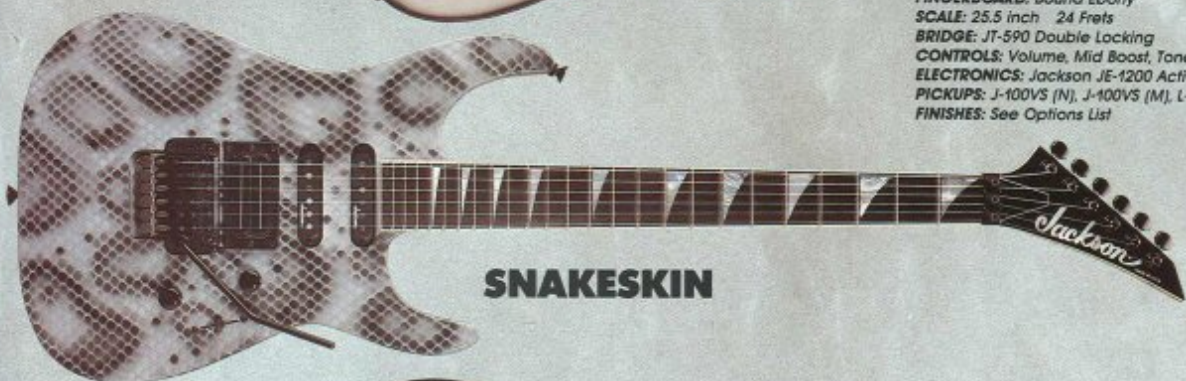
**NUT WIDTH:** 1 $\frac{1}{4}$ "  
**THICKNESS:** 1st: 17mm  
12th: 20mm



## RECLINING WOMAN

### JACKSON U.S.A. SERIES SOLOIST CUSTOM

**BODY:** Poplar  
**NECK:** Quartersawn Maple  
**FINGERBOARD:** Bound Ebony  
**SCALE:** 25.5 inch 24 Frets  
**BRIDGE:** JT-590 Double Locking  
**CONTROLS:** Volume, Mid Boost, Tone, 5-Way Switch  
**ELECTRONICS:** Jackson JE-1200 Active Mid Boost Circuit  
**PICKUPS:** J-100VS (N), J-100VS (M), L-500XL (B)  
**FINISHES:** See Options List



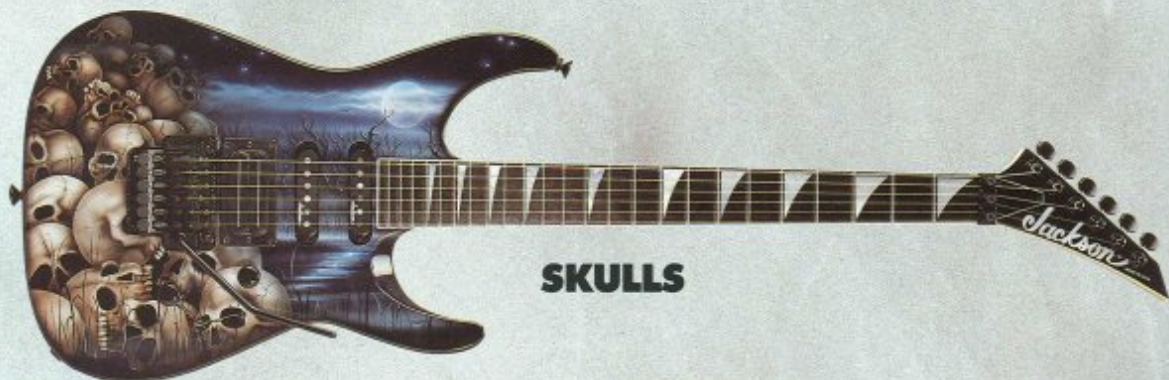
## SNAKESKIN



## FLAMES



## TEXTURED PEARL ON RED



## SKULLS

### NECK SPECS

**NUT WIDTH:** 1 $\frac{1}{4}$ "  
**THICKNESS:** 1st: 18mm  
 " 12th: 20mm

# PLAYER'S CHOICE





**A**t Jackson, inspiration has fueled our history of discovery and innovation. Innovation that has, in turn, revolutionized what guitarists expect of their instruments. The Jackson Players Choice Series has been inspired by the feedback we have received from you, the working guitarist. These instruments are comparable to our Custom Shop guitars in all respects except that their specifications have already been worked out for you.

On models that have bound necks, you will find that the fret ends are actually inlaid into the binding, rather than over it, which gives an extremely smooth transition between the fret and binding, making these necks the fastest playing that we know of made today.

You will recognize several of these guitars as being very similar to models some of our endorsers play. Other models in the program were developed by going through our custom guitar production files and coming up with the most frequently requested combinations of features. All are hand made in our California factory and have a lifetime warranty.

**Original Rhoads** - The second guitar built for Randy Rhoads by Jackson, this guitar went on to become his main instrument. The Original Rhoads is an authentic reproduction of this highly original instrument, right down to the Duncan Pickups and special brass parts.

**Rhoads 10 String** - First built to specifications supplied to us by Dan Spitz because he needed a guitar that had a bigger sound than his normal six string guitars could offer. Made with Quilted Maple wings, this guitar must be seen and heard to be appreciated.

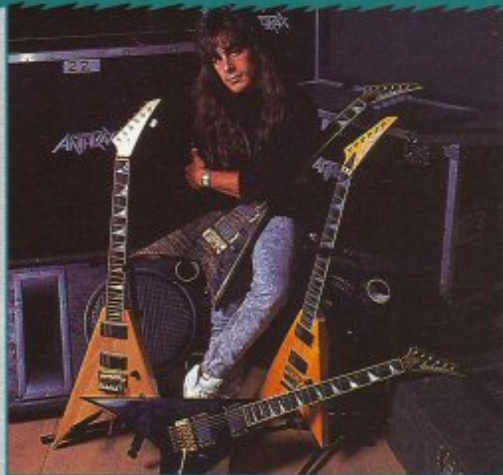
**King V** - For the player who wants the ultimate metal machine, the King V Players Choice Model has it all - radical styling, fully recessed tremolo, and Duncan pickups. The bigger body is responsible for the added resonance and power this guitar delivers.

**Collen** - The Collen represents yet another innovative Jackson guitar design. This entirely original instrument, designed by Jackson in collaboration with Phil Collen, plays and sounds like only a Jackson can. Its very arched body is extremely comfortable to play, and because of its thick body and neck thru construction, it sustains individual notes and chords equally well.

**Dinky Elite** - This is the ultimate bolt on neck guitar. A Quilted Maple top on a Koa body makes this guitar a real beauty. Coupled with the Pao Ferro fingerboard and Duncan Pickups, the Dinky Elite offers a tonal range which cannot be surpassed. Truly one of the most beautiful guitars that we build.

**Flamed Dinky** - Similar in features to the Jackson U.S.A. Series Dinky, but constructed with an all Maple body for a harder edged sound. The two piece flamed Maple bodies are book matched to bring out the natural grain, and then are finished in transparent colors to show off the unique patterns in the wood.

# PLAYER'S CHOICE



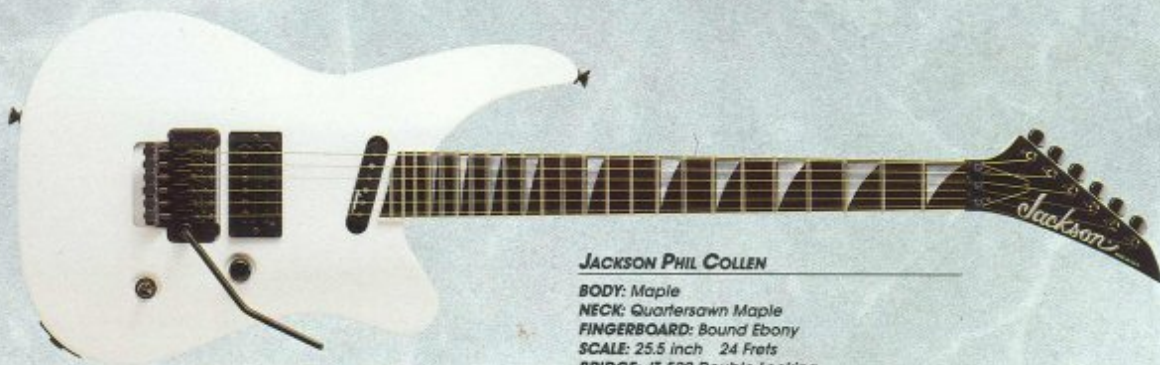
GENE AMBO

DANNY SPITZ — ANTHRAX



## JACKSON EXOTIC DINKY

**BODY:** Koa w/Quilted Maple Top  
**NECK:** Quartersawn Maple  
**FINGERBOARD:** Pau Ferro  
**SCALE:** 25.5 inch 24 Frets  
**BRIDGE:** JT-590 Double Locking  
**CONTROLS:** Volume, Tone, 5-Way Switch  
**ELECTRONICS:** Passive  
**PICKUPS:** Duncan STK-S1 (N), Duncan STK-S1 (M), Duncan SH-5 (B)  
**FINISHES:** TP, TS, TR, TB



## JACKSON PHIL COLLEN

**BODY:** Maple  
**NECK:** Quartersawn Maple  
**FINGERBOARD:** Bound Ebony  
**SCALE:** 25.5 inch 24 Frets  
**BRIDGE:** JT-590 Double Locking  
**CONTROLS:** Volume, 3-Way Toggle  
**ELECTRONICS:** Passive  
**PICKUPS:** J-100VS (N), J-90C (B)  
**FINISHES:** MBK, PW, SSM



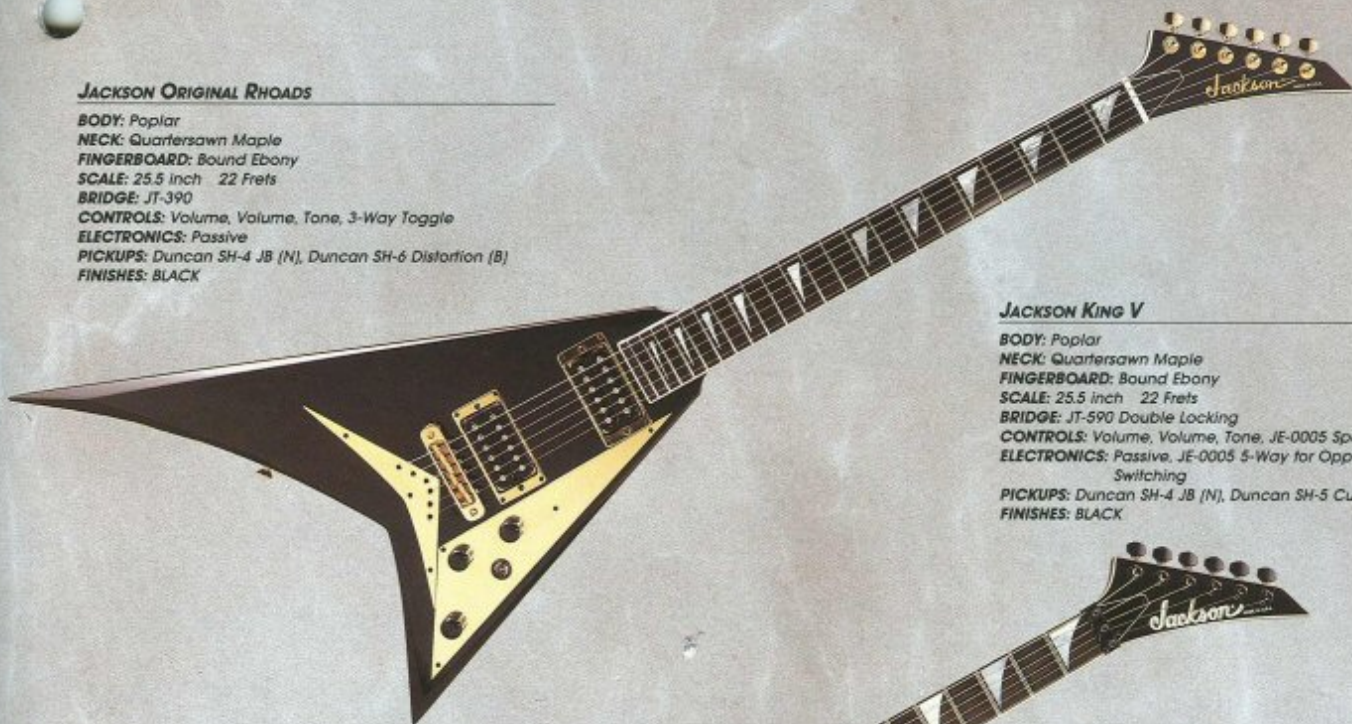
## JACKSON FLAMED DINKY

**BODY:** Flame Maple  
**NECK:** Quartersawn Maple  
**FINGERBOARD:** Bound Ebony  
**SCALE:** 25.5 inch 24 Frets  
**BRIDGE:** JT-590 Double Locking  
**CONTROLS:** Volume, Tone, 5-Way Switch  
**ELECTRONICS:** Passive  
**PICKUPS:** J-100VS (N), J-100VS (M), J-500XL (B)  
**FINISHES:** TBK, TP, TB



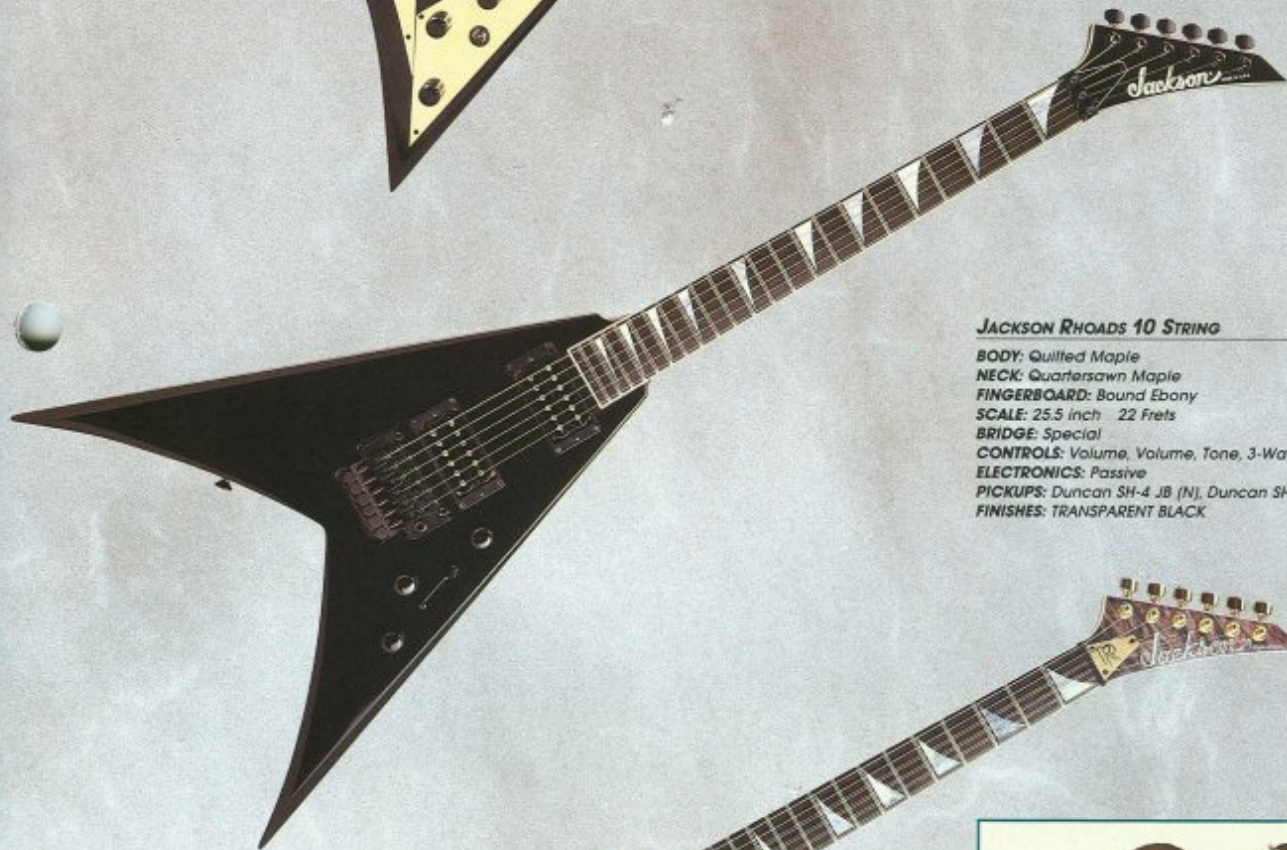
#### JACKSON ORIGINAL RHODADS

**BODY:** Poplar  
**NECK:** Quartersawn Maple  
**FINGERBOARD:** Bound Ebony  
**SCALE:** 25.5 inch 22 Frets  
**BRIDGE:** JT-390  
**CONTROLS:** Volume, Volume, Tone, 3-Way Toggle  
**ELECTRONICS:** Passive  
**PICKUPS:** Duncan SH-4 JB (N), Duncan SH-6 Distortion (B)  
**FINISHES:** BLACK



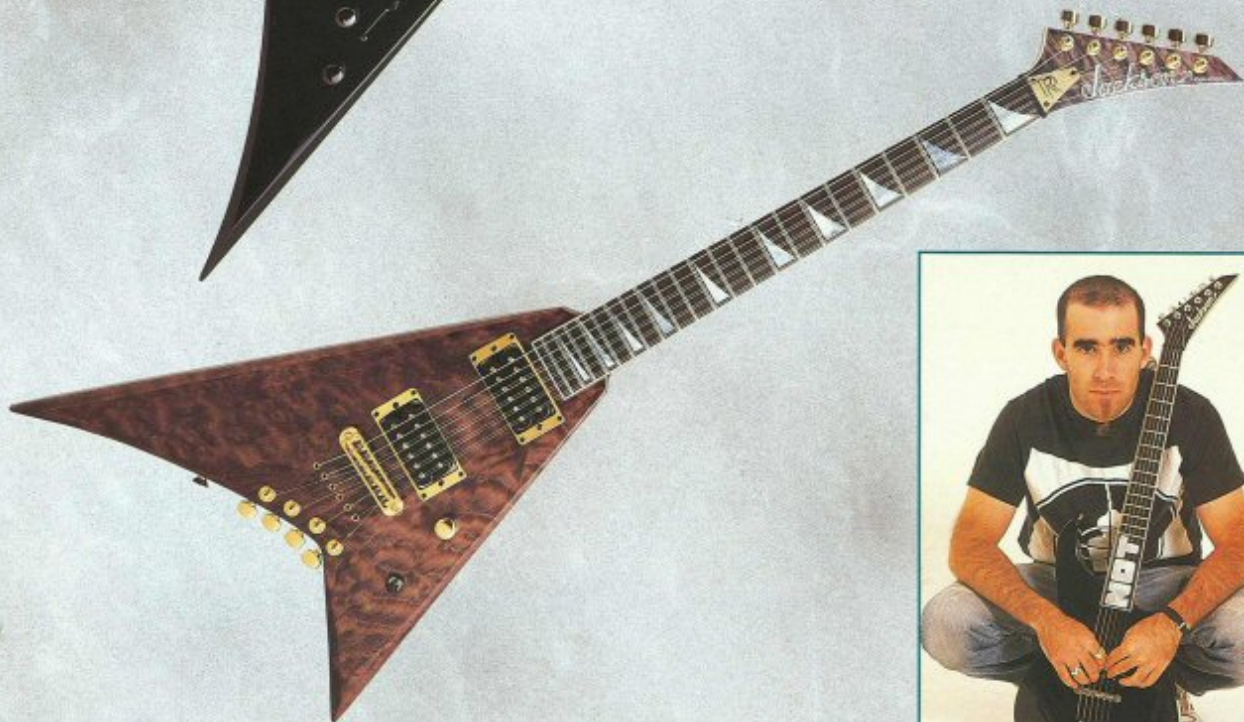
#### JACKSON KING V

**BODY:** Poplar  
**NECK:** Quartersawn Maple  
**FINGERBOARD:** Bound Ebony  
**SCALE:** 25.5 inch 22 Frets  
**BRIDGE:** JT-590 Double Locking  
**CONTROLS:** Volume, Volume, Tone, JE-0005 Special 5-Way  
**ELECTRONICS:** Passive, JE-0005 5-Way for Opposite Coil Switching  
**PICKUPS:** Duncan SH-4 JB (N), Duncan SH-5 Custom (B)  
**FINISHES:** BLACK

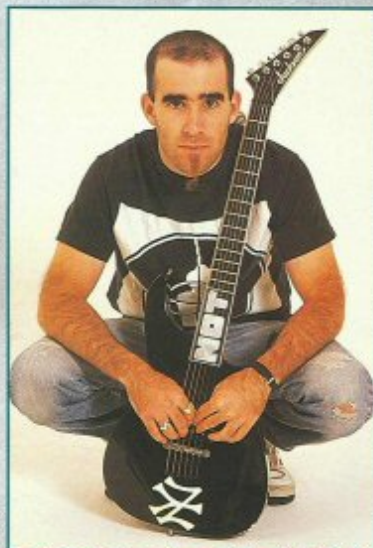


#### JACKSON RHODADS 10 STRING

**BODY:** Quilted Maple  
**NECK:** Quartersawn Maple  
**FINGERBOARD:** Bound Ebony  
**SCALE:** 25.5 inch 22 Frets  
**BRIDGE:** Special  
**CONTROLS:** Volume, Volume, Tone, 3-Way Toggle  
**ELECTRONICS:** Passive  
**PICKUPS:** Duncan SH-4 JB (N), Duncan SH-6 Distortion (B)  
**FINISHES:** TRANSPARENT BLACK

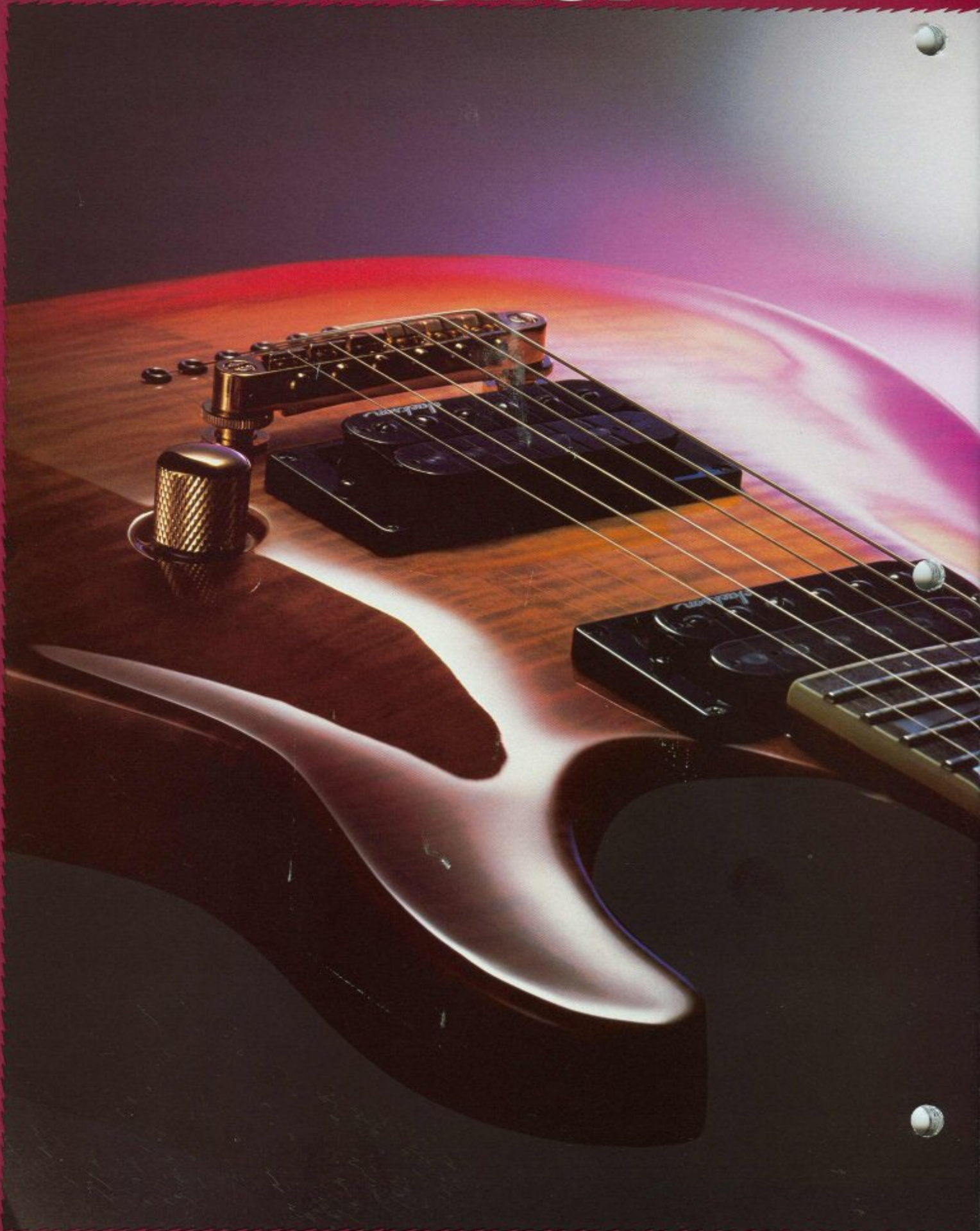


SCOTT IAN — ANTHRAX



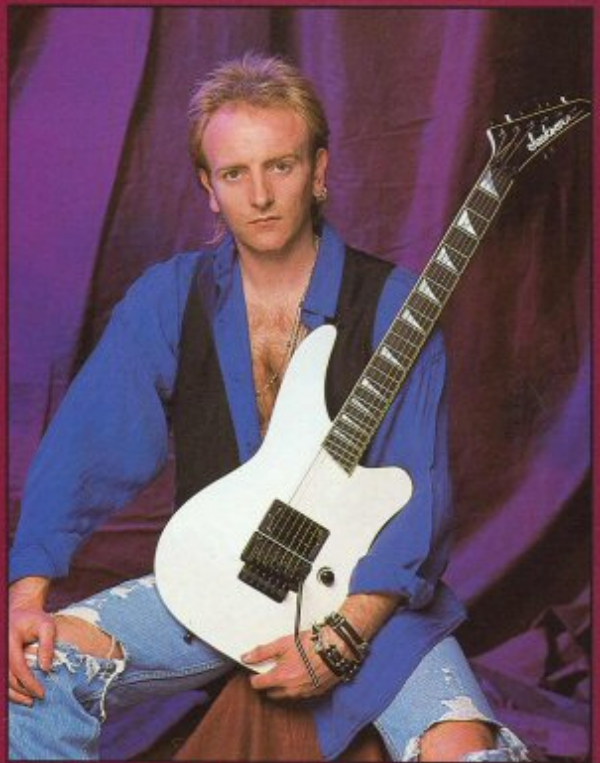
GEORGE CHIN

# CUSTOM SHOP





**S**ince 1978, Jackson has been building custom American made guitars for musicians who demand the finest instruments possible. Jackson Custom guitars are entirely custom made, one at a time, and to your exact specifications. From rough cutting the general body shape, to hand setting the frets, to final set-up and inspection. Jackson Custom guitars are made by expert American craftsmen right here at our plant in Ontario, California. Every detail, no matter how minute, is given all the time and attention needed to produce a flawless instrument. We use only the finest woods, our own ultra-high quality electronics, and the best hardware made. Our extensively trained and inventive guitar makers will work with you to produce the instrument you want - exactly the instrument you want. You can choose from our broad range of body styles, including all of the Jackson bodies shown in this catalog, or even design your own body. There's a huge range of standard graphics or finishes to choose from, and we even provide body templates for you to create your own graphic image. Simply put, if you can dream it up, we can build it.



ROSS HALFIN

**PHIL COLLEN — DEF LEPPARD**

# CUSTOM SHOP



**Custom Rhoads** — Reverse headstock and inlays. Pickup covers painted to match body finish and headstock. Neck thru body construction with bound Ebony fingerboard.



**Custom Soloist** — Figured Hawaiian Koa neck thru body guitar. Reverse headstock with full two octave Ebony fingerboard. Full recess JT-590 Tremolo System.



**Custom Dinky** — Birdseye Maple neck and fingerboard with eyeball inlays and custom graphic. Painted pickup covers and reverse headstock.



**Custom V** — Special order body shape with Seymour Duncan Pickups and reverse headstock. Monotone dragon graphic on Snow White finish.



**Custom Rhoads** — Custom graphic with painted pickup covers and contrast color painted on bevels of body. Chrome hardware and bound Ebony fingerboard.



**Custom Arched Top Dinky** — Full thickness premium grade Quilted Maple top on a Mahogany body. Bolt on neck construction with bound fingerboard and headstock. Gold hardware with matching headstock overlay.

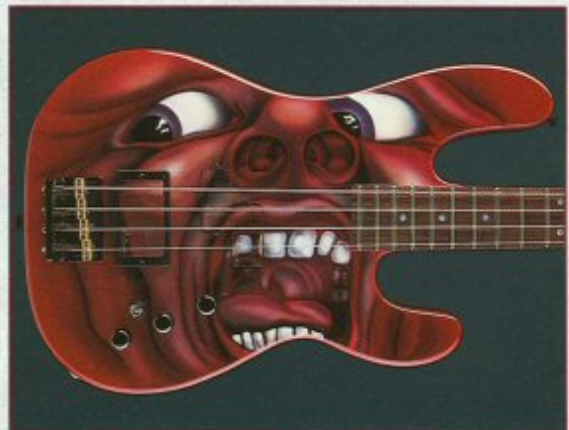
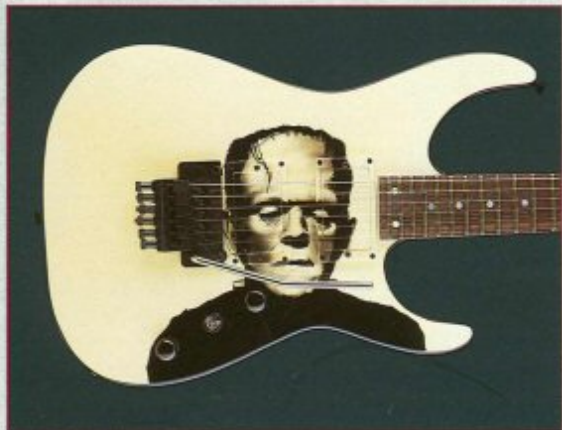
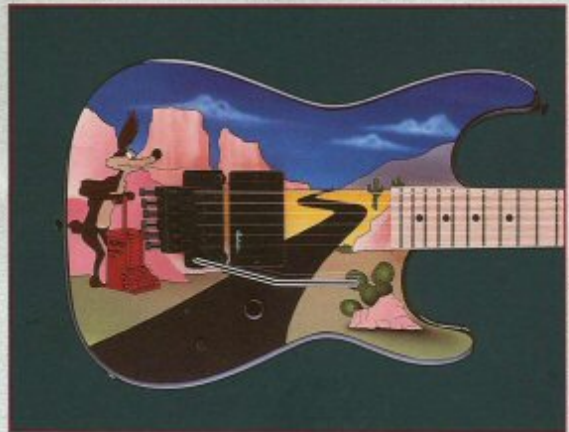
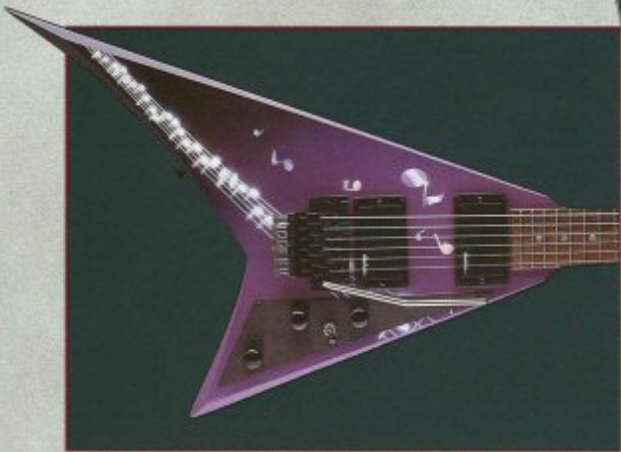


**Custom Soloist** — Neck thru body construction using Australian Lacewood for the body and neck. Pao Ferro fingerboard and gold hardware. Seymour Duncan pickups in all positions.



**Custom Soloist** — Highly detailed custom inlay on a bound Ebony fingerboard. Two Jackson Custom pickups with a JE-1200 mid-boost circuit. Neck has been custom shaped to customers specifications.

# CUSTOM OPTIONS



# GLOSSARY

## HUMBUCKERS

**J-50M**-Warm, classic tone with increased output.

**J-50N**-Classic tone with slightly less output for smooth round tone.

**J-55**-Delivers both chunky rhythm textures and rich round lead voice.

**J-75**-Mega output, hard edged with distinctive, grinding crunch.

**J-80**-High output, smooth response distortion class pickup.

**J-85**-High output voltage with a nice fat midrange grind.

**J-92C**-Smooth overdriven sound with a distinctive, crisp edge.

**J-95**-High output with wide band response to produce chunky rhythm textures and a rich, round lead voice.

**L-500XL**-Custom built hi output, ultra clean response.

## SINGLE COILS

**J-100**-Authentic vintage single coil, modified staggered pole pieces to conform to contemporary fingerboard radius and more popular string gauges of today.

**J-100RW**-Reverse wound, reverse polarity version of J-100 pickup.

**J-110**-Original single coil sound clean overtones and harmonics.

**J-120**-Solid highs and overtones with extra lows and mids.

**CHANDLER LST** and **LST/RW**-Vintage reissue of the lipstick tube pickup, medium output and a high resonant peak greatly enhance sensitivity and dynamics.

## SINGLE COIL HUMBUCKING

**J-100VS**-Split coil construction with increased output and mid range.

**J-200**-Low impedance with increased lows and mids.

**J-200R**-Full size humbucker output in a single coil package.

## BASS PICKUPS

**J-20**-Split coil construction with increased output and mid range.

**J-25**-5-string version of J-20.

**J-30P**-Ceramic split coil pickup with enhanced middle and top end.

**J-150VS**-Bridge position, warm tone with a tight bottom end.

**J-150**-Bridge position ceramic single coil, clear defined sound through entire frequency range.

**J-175**-Active wide response hum cancelling with solid bottom end and piano tone treble response.

## FINISH ABBREVIATIONS

- PW** - PEARL WHITE
- SW** - SNOW WHITE
- STN** - STONE
- SS** - SPARKLE SILVER
- NL** - NATURAL LACE
- CL** - CARAMEL LACE
- CIN** - CINNABAR
- TA** - TRANS AMBER
- TS** - TOBACCO SUNBURST
- TO** - TRANS ORANGE
- SGL** - STAR GLO
- CS** - CHERRY SUNBURST
- TR** - TRANS RED
- BR** - BRIGHT RED
- CR** - CANDY RED
- DMR** - DEEP METALLIC RED
- MAG** - MAGENTA
- TV** - TRANS VIOLET
- MV** - METALLIC VIOLET
- DMV** - DEEP METALLIC VIOLET
- TP** - TRANS PURPLE
- TPP** - TRANS PEARL PURPLE
- TRQ** - TURQUOISE
- TB** - TRANS BLUE
- CB** - CANDY BLUE
- DMB** - DEEP METALLIC BLUE
- TBK** - TRANS BLACK
- MB** - METALLIC BLACK
- BLK** - BLACK

## GRAPHIC ABBREVIATIONS

- G/01** - LIGHTNING SKY
- G/02** - SNAKESKIN
- G/03** - SKULLS
- G/04** - FLAMES
- G/05** - SUNSET
- G/06** - RECLINING WOMAN
- G/07** - STANDING WOMAN
- G/08** - BLACK & WHITE DRAGON
- G/09** - MULTI COLORED DRAGON
- G/10** - SPHERES
- G/11** - EERIE DESS
- G/12** - HOLO FLAKE ON BLACK
- G/13** - CORAL SEA
- G/14** - TURQUOISE STONE
- G/15** - TEXTURED PEARL ON RED



## GUITAR BRIDGES

**JT-590**-Floyd Rose licensed tremolo precision crafted in Germany. All parts interchangeable with original Floyd Rose™ bridges.

**JT-580**-Floyd Rose licensed double locking tremolo with machined steel baseplate.

**JT-580LP**-Same specifications as JT-580 tremolo but with low profile fine tuners.

**JT-490 W/ROLLER NUT**-Hi mass fulcrum tremolo with lock down saddles featuring roller nut for greater tuning stability.

**J-390 W/TAIPIECE**-Tune-o-matic 2 point adjustable non trem with Charvel floating tailpiece.

**J-370**-Non-tremolo 12 string bridge with 12 fully adjustable saddles.

**J-380**-Flat mount non-tremolo string thru body featuring 6 fully adjustable bridge saddles.

**JT-380**-Die cast fulcrum tremolo with adjustable tension arm.

**JT-480**-Vintage style synchronized tremolo.

**JT-470**-2 point vintage style tremolo.

## BASS BRIDGES

**JB-340**-Hi mass fully adjustable for string height and intonation.

**JB-440**-Precision cast hi density bass bridge with track mounted saddles.

**JB-540**-Tune-o-matic type bridge with strings loaded thru body for improved response.

**KAHLER 2440** and **2450**-Advanced design features adjustable string spacing, height and intonation.

## ELECTRONICS

**JE-1200**-Active mid-boost guitar circuit. Boosts middle frequencies to fatten up and thicken for a bigger tone and added sustain.

**JE-1500**-Active para-mid E.Q. guitar circuit. Use the tone knob to select the center of any group of frequencies from 450Hz to 45KHz. This is a filter sweep very much like a wah pedal.

**JE-2000**-Active E.Q. bass circuit. Bass and treble controls give  $\pm 12$  dB of boost and cut at 40Hz and 25KHz for incomparable sonic control.

**JE-2500**-Active para-mid E.Q. bass circuit. This is the same basic circuit as the JE-2000 but designed for use with EMG-35P/J pickups.

©COPYRIGHT 1993 JACKSON CHARVEL  
ALL RIGHTS RESERVED  
ALL SPECIFICATIONS SUBJECT TO CHANGE  
WITHOUT PRIOR NOTICE.

\$5.00



**CATALOG CREDITS:**

**COPY, RESEARCH &  
DEVELOPMENT:**  
STEPHEN KAUFMAN

**DESIGN:**  
SUE DAVIS

**PHOTOGRAPHY:**  
JUTA SUGAI & BRIAN WILLECKE

**SPECS & CHECKS:**  
JAMES PENNEBAKER

**COLOR SEPS:**  
TOM BUCKLEY, JTM COLORSCAN

**PRINTING:**  
COCKRELL PRINTING

Our special thanks to those  
endorsers pictured in this  
catalog. Our regrets to  
those players who, due to  
scheduling conflicts, were  
not included.

THE JACKSON/CHARVEL  
GUITAR COMPANY  
P.O. BOX 2344  
FORT WORTH, TEXAS  
76113-2344

© COPYRIGHT 1993 JACKSON  
CHARVEL. ALL RIGHTS RESERVED

PRINTED IN U.S.A.

**BX1187**

