

Silver Series Wall Pack 18w & 26w



DESCRIPTION:

Touch-Plate's Wall Pack Lights were designed to offer better security, more lumens, and higher cost savings. Our Wall Pack Lights can offer energy savings of 70% or greater over traditional metal halide or high pressure sodium lighting. Our LEDs are optimal for new construction and retrofit installation.

PRODUCT FEATURES:

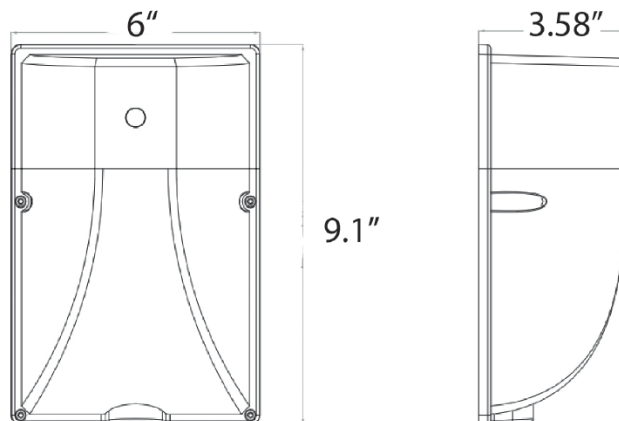
- Heavy-duty aluminum housing
- No flickering or humming
- Eco-friendly, no mercury
- Lifetime of 50,000 hrs or greater
- DLC Listed
 - ML-WPA18w
 - ML-WPA26w
- 5 Year Limited Warranty

SPECIFICATIONS:

- Wattage: 18w and 26w
- Lumens: 1,800 and 2,600 (approx > 100lm/w)
- Equivalence: 80w and 100w HID/HPS/MH
- CRI: >80Ra
- IP Rating: IP65
- LED Chips: SMD
- PF: >0.90

PHYSICAL PARAMETERS:

- Dimensions
 - Length: 6"
 - Height: 9.1"
 - Depth: 3.58"
- Weight
 - 2.25 lbs



4822 Projects Drive Fort Wayne, IN 46825

P: 260.426.1565

E: ledsales@touchplate.com

www.ledlightingandcontrols.com



Silver Series Wall Pack

ORDERING GUIDE

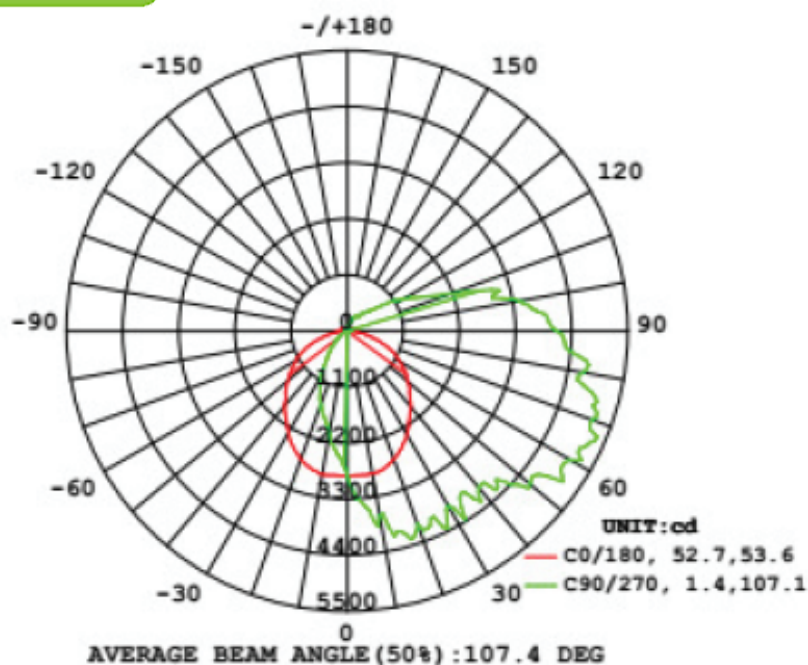
LED Type XXX -	Lumens - Wattage XXX - XXX	CCT -XX	Voltage X	
<ul style="list-style-type: none"> WPK Wall Pack 	<ul style="list-style-type: none"> 018-018 11*00lm - 18w 026-026 2,600lm-26w 	<ul style="list-style-type: none"> 35 3500k 40 4000k 50 5000k 57 5700k 	<ul style="list-style-type: none"> U 120-277v 	

ACCESSORIES

(specified at time of order)

- Photocell Control

PHOTOMETRIC



Silver Series Wall Pack

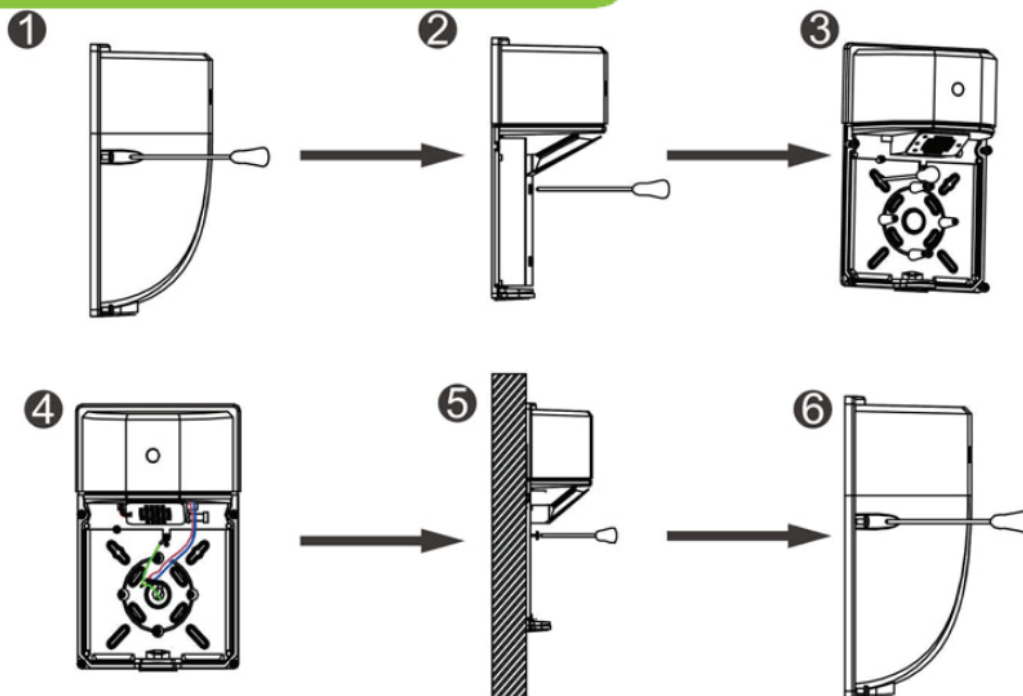
INSTALLATION INFORMATION (WIRING)

This product must be installed in accordance with National Electrical Code(NEC) and/or applicable local codes, by a qualified electrician.

DANGER - RISK OF SHOCK - DISCONNECT POWER BEFORE INSTALLATION

- Make the necessary 'HOT' (Black or Brown), 'Neutral' (White or Blue), and 'Ground' (Green) connections in an approved junction box.

INSTALLATION INFORMATION



1. Remove the lens by removing the 2 screws securing it to the rear housing and set aside.
2. Loosen two screws enough to allow reflector to slide upward until keyhole in reflector releases from two screws. Remove reflector.
3. Knock out appropriate holes around outlet hole in rear housing and apply the gasket to the back surface of housing and fasten the rear housing to the outlet box using the screws supplied with the outlet box.
4. Complete the wiring to the power source and ground using customer supplied 90°C minimum rated wire connectors. Make the following electrical connections in the mounting box or junction box:
 - a. Connect the black fixture lead to the voltage supply lead
 - b. Connect the white fixture lead to the neutral supply lead
 - c. Connect the ground lead to the supply ground lead.
 - d. To ensure rain tight seal, apply silicone caulking around back edges of fixture.
5. Replace reflector.
6. Replace front housing by reversing procedure used to remove it.