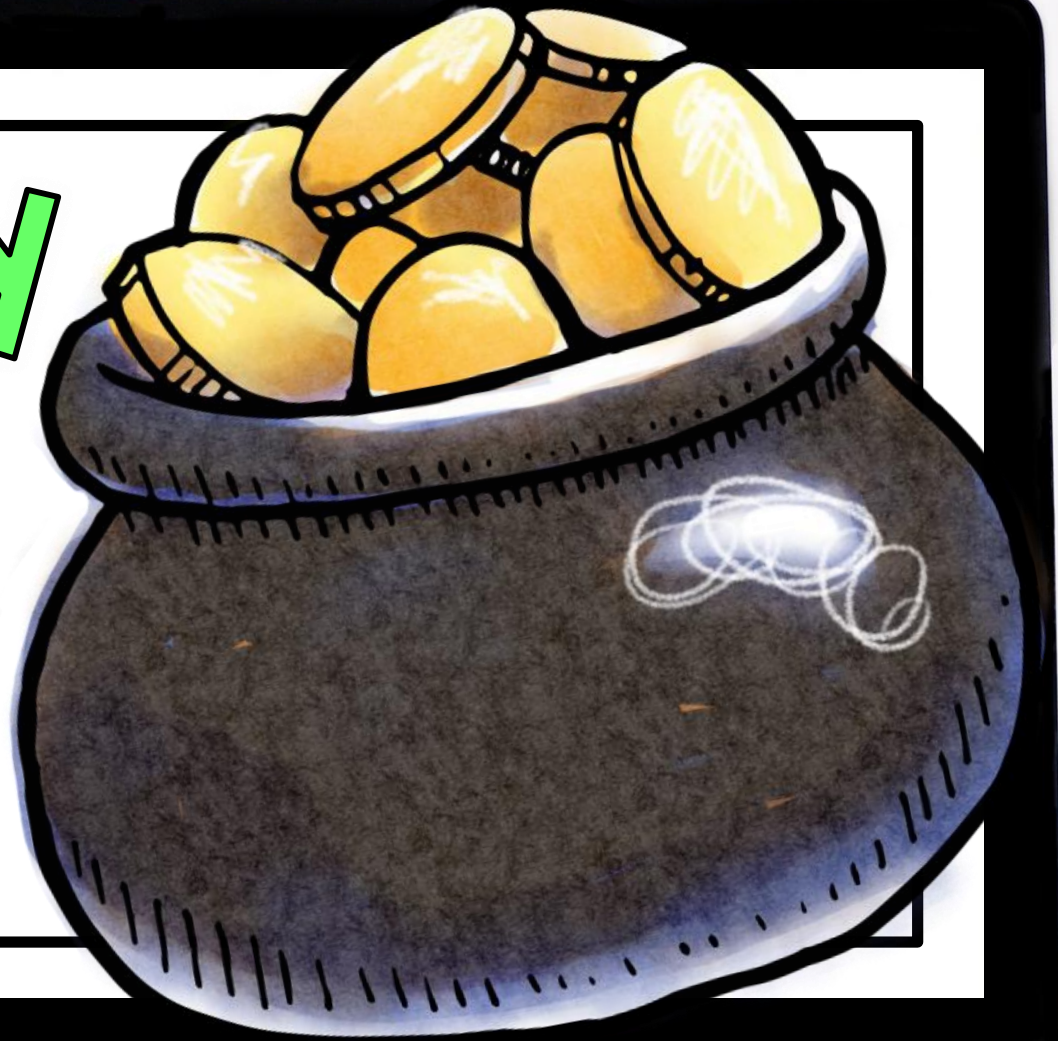


Ready  
Set  
Show  
Division

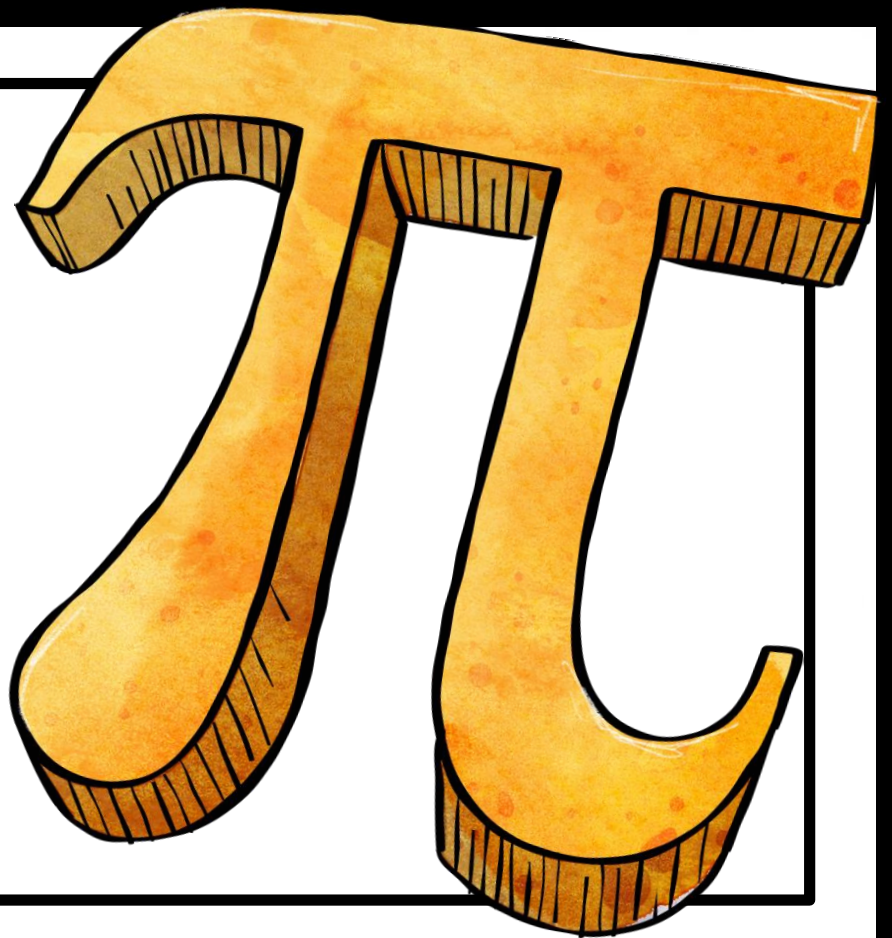




# Interactive Math Fact Practice



with  
March  
themes



Every problem comes with a  
Ready, Set, Show  
& Answer slide

**Ready**

$$4 \div 2 = \text{pot of gold}$$

**Set**

$$4 \div 2 = \text{pot of gold}$$

**Show**

$$4 \div 2 = \text{pot of gold}$$

**Answer**

**2**

# Introduction slides with editable text boxes

When you see the word  
**READY**

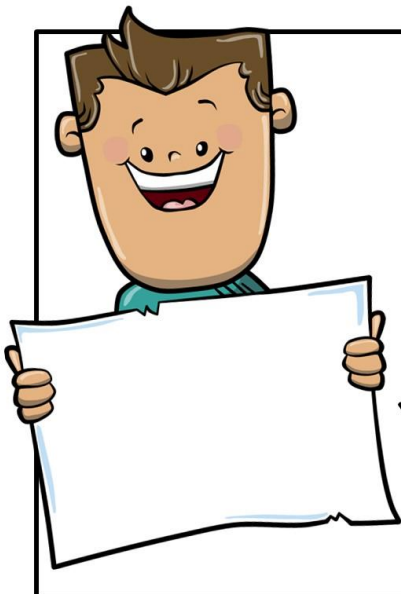
get ready to listen and read  
the problem. You can get  
your white board and  
marker ready. This is your  
signal to erase your board  
if needed.

© wanttobesuperteacher.com

When you see the word  
**SET**

you can start working  
out the problem and  
showing your answer on  
your white board.

© wanttobesuperteacher.com



When your  
answer is  
ready, put  
the white  
board under  
your chin with  
your writing  
facing you.

© wanttobesuperteacher.com

When you see the word  
**SHOW**

hold up your white board  
and show off your  
answer. Make sure your  
teacher can see it.

© wanttobesuperteacher.com

# Practice question with step-by-step instructions

**Let's  
Practice!**

**Ready**

Erase your board if  
needed and read the  
question.

$$10 \div 5 = \text{🌈}$$

**Set**

Now work out the problem on  
your white board. When you  
have your answer ready, put  
the white board under your  
chin with your work facing you.

$$10 \div 5 = \text{🌈}$$

**Show**

Show off your answer!  
Hold up the white board so  
your teacher can see your  
work. Don't worry if it's  
wrong. Mistakes are proof  
that you are trying!

$$10 \div 5 = \text{🌈}$$

**Answer**

**2**

# 156 Division Fact Problems + 20 Challenges

**Ready**

$$24 \div 4 = \text{girl reading book}$$

**Set**

$$18 \div 2 = \text{pie}$$

**Show**

$$60 \div 5 = \text{clover}$$

**Ready**

$$28 \div 7 = \text{horseshoe}$$

**Set**

$$54 \div 6 = \text{open book}$$

**Show**

$$84 \div 12 = \text{pi}$$

**Ready**

$$\text{rainbow} \div 5 = 5$$

**Set**

$$8 \div 1 = \text{closed book} \div 5$$

**Show**

$$110 \div \text{pie} = 11$$

Every division equation with a  
divisor of 1-12  
is included

**Ready**

$$0 \div 1 = \text{treasure chest}$$

**Show**

$$144 \div 12 = \text{girl reading}$$


© wanttobesuperteacher.com

© wanttobesuperteacher.com




# 64 division problems with a divisor of 1-5

**Ready**

$$6 \div 2 =$$


**Set**

$$4 \div 4 =$$


**Show**

$$33 \div 3 = \pi$$



**Ready**

$$50 \div 5 =$$



**Set**

$$5 \div 1 =$$



**Show**

$$24 \div 2 =$$



**Ready**

$$9 \div 3 =$$


**Set**


$$20 \div 4 =$$


**Show**


$$0 \div 5 =$$


# 91 division problems with a divisor of 6-12


**Ready**

$$56 \div 8 =$$


**Set**

$$45 \div 9 =$$



**Show**

$$60 \div 12 =$$



**Ready**

$$44 \div 11 =$$

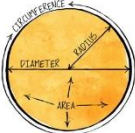

**Set**

$$24 \div 6 =$$



**Show**

$$110 \div 10 =$$



**Ready**

$$90 \div 9 =$$


**Set**

$$121 \div 11 =$$


**Show**

$$77 \div 7 =$$


# 20 Challenge Problems

Ready

$$\text{Pie} \div 4 = 5$$

Set

$$\text{Clover} \div 4 = 21 \div 7$$

Show

$$88 \div \text{Shoe} = 8$$

Ready

$$\text{Book} \div 4 = 36 \div 6$$

Set

$$90 \div \text{Boy} = 10$$

Show

$$42 \div \text{Circle} = 6$$

Ready

$$\text{Pi} \div 6 = 7$$

Set

$$\text{Hat} \div 12 = 9$$

Show

$$45 \div \text{Pi} = 60 \div 12$$

# Editable slides + instructions for easy customization

## Editable Slide Instructions

If you would like to create additional slides for the show, the text boxes on the slides below are editable and can be copied and pasted into the existing show as many times as you would like.

To edit the slides, just click on the text box and edit away! The fonts used on these slides are embedded into this PowerPoint so they should show up on your computer just like they do on mine. However, if something isn't looking quite right, you can also download these fonts for free at TpT and download them to your computer.

The fonts used are:  
[KG Miss Spangler Act 1 \(questions\)](#)  
[KG Miss Spangler Act 2 \(answers\)](#)

To follow the links, right click on the link above and choose "open hyperlink".  
If you want to add the same clipart images, you can find the free and paid clipart sets here: [Sarah Beckwith's Monthly Calendar Icons P1 Edition, Persepolis & 31 Day Clip Art](#), [Erica Padgett's Multicultural School Kids & Food Art](#), [Narnaby Originals St. Patrick's Day Clip Art](#). To follow the links, right click on the link(s) above and choose "open hyperlink".

Once you have created your own slides you can copy, paste, and move them wherever you would like in the show.

To do this, go to the left-hand side of the screen where you see all the slides.

Click the first slide you want to copy (probably the Ready slide).

Now hold down the SHIFT key and click the last slide you want to copy (probably the Answer slide).

Now hit CTRL+C to copy.

Go wherever you want to put the selected slides in the show and click between the slides where you want to add your slides.

Now hit CTRL+V to paste the slides you copied.

If you want to move the original slides, you can do this using the same process above, but when you paste the slides will appear blank. Don't worry, just hover over the first slide you pasted and choose "Keep Source Formatting" from the pop-up slide menu. Then the slides will look like the originals.

If you make a mistake, stop... breathe... And hit CTRL+Z. This will undo the last action so you can retrace your steps. (This strategy works very well for kiddos in the computer lab too.)

## Ready

Click &  
type

## Set

Copy &  
paste

## Show

Copy &  
paste

## Answer

00