
From: Rick
To: IELTS Prep Group
Subj: IELTS Speaking lesson 12-1-2016

Lesson Objective

The student shall be able to speak and comprehend both social and business language and demonstrate effective oral communication skills.

Section One

Peer Spontaneous Discussions

Evaluation Criteria

- Ability to comprehensive spoke English and speak effectively on random chosen topics

Students will be asked to choose a random discussion topic from the themes identified below, and ask a peer to speak for approximately 2 minutes. At the conclusion of the 2-minute period, the student will be asked by the peer to respond to 3 questions based on their topic

1. Dining outside
2. Healthy Relationships
3. Career Goals
4. Educational Goals
5. Weekend Entertainment
6. Favorite Movie
7. Favorite Animals
8. Favorite Holiday

Section Two

Graph and Plot Analysis

Evaluation Criteria

- Ability to interpret graphs/plots and communicate in English their interpretation

Students will be asked to choose a selected graph/plot and speak for approximately 2 minutes on their analysis.

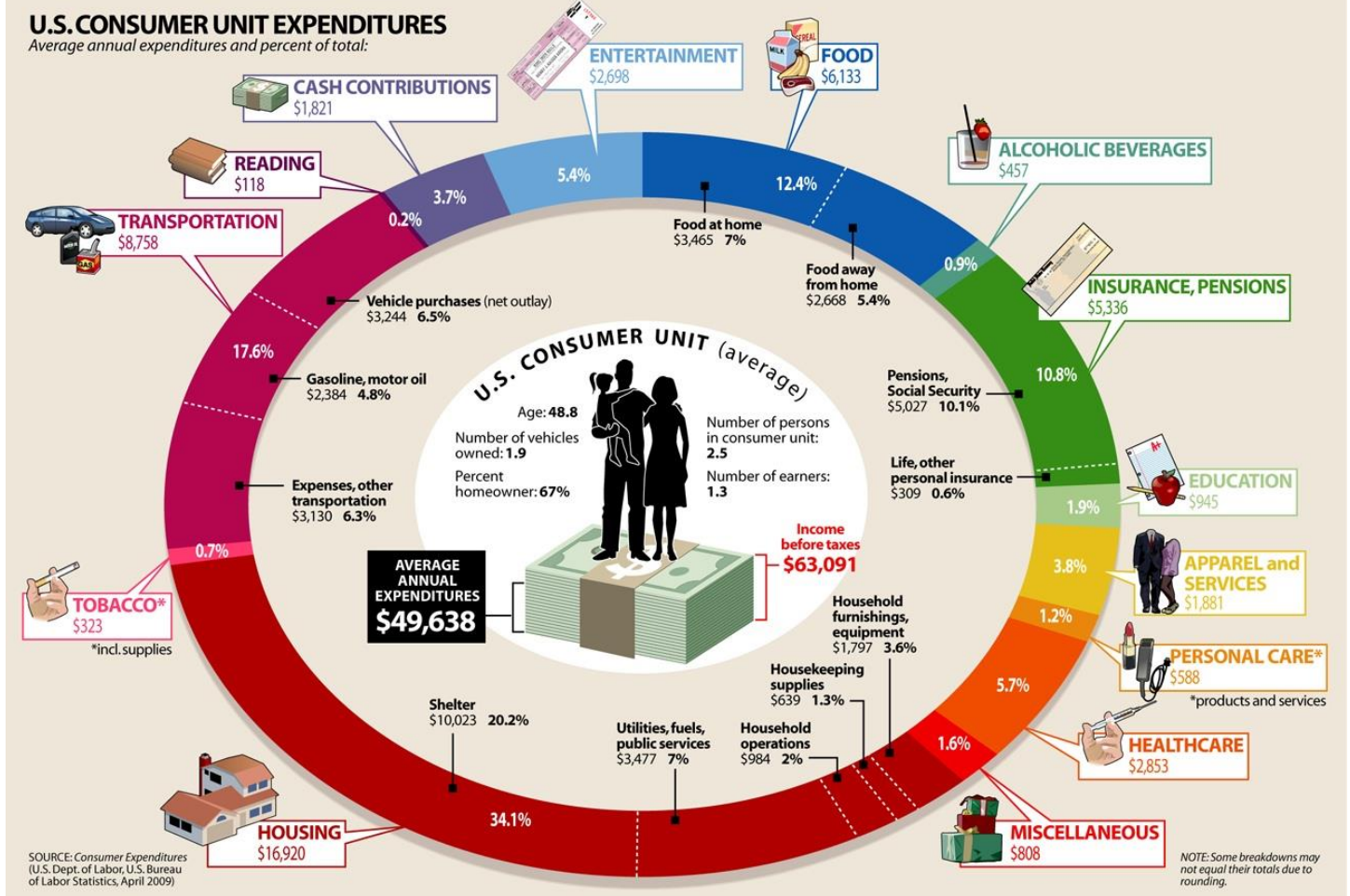
GRAPH 1

Where Does the Money Go?

The Department of Labor's latest survey provides a detailed look into how the average U.S. consumer unit spends their annual paycheck.

U.S. CONSUMER UNIT EXPENDITURES

Average annual expenditures and percent of total:

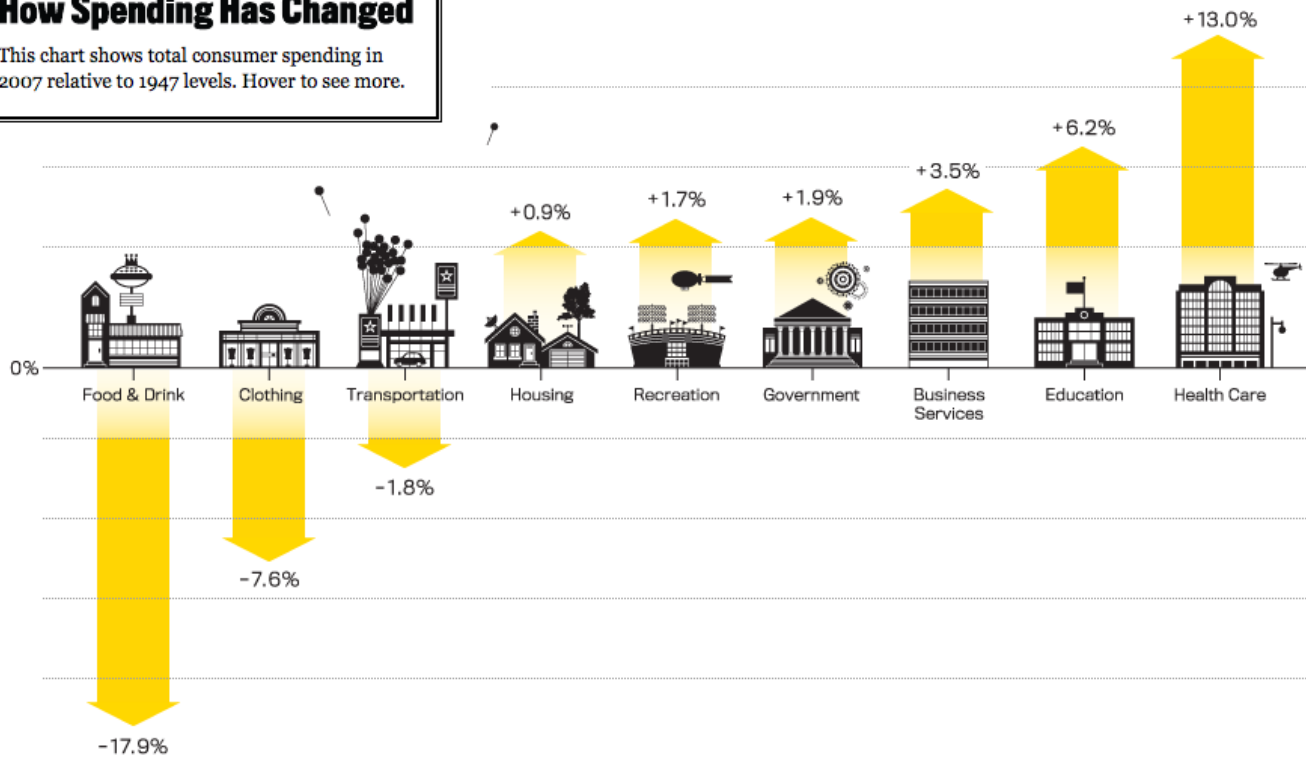


SOURCE: Consumer Expenditures (U.S. Dept. of Labor, U.S. Bureau of Labor Statistics, April 2009)

GRAPH 2

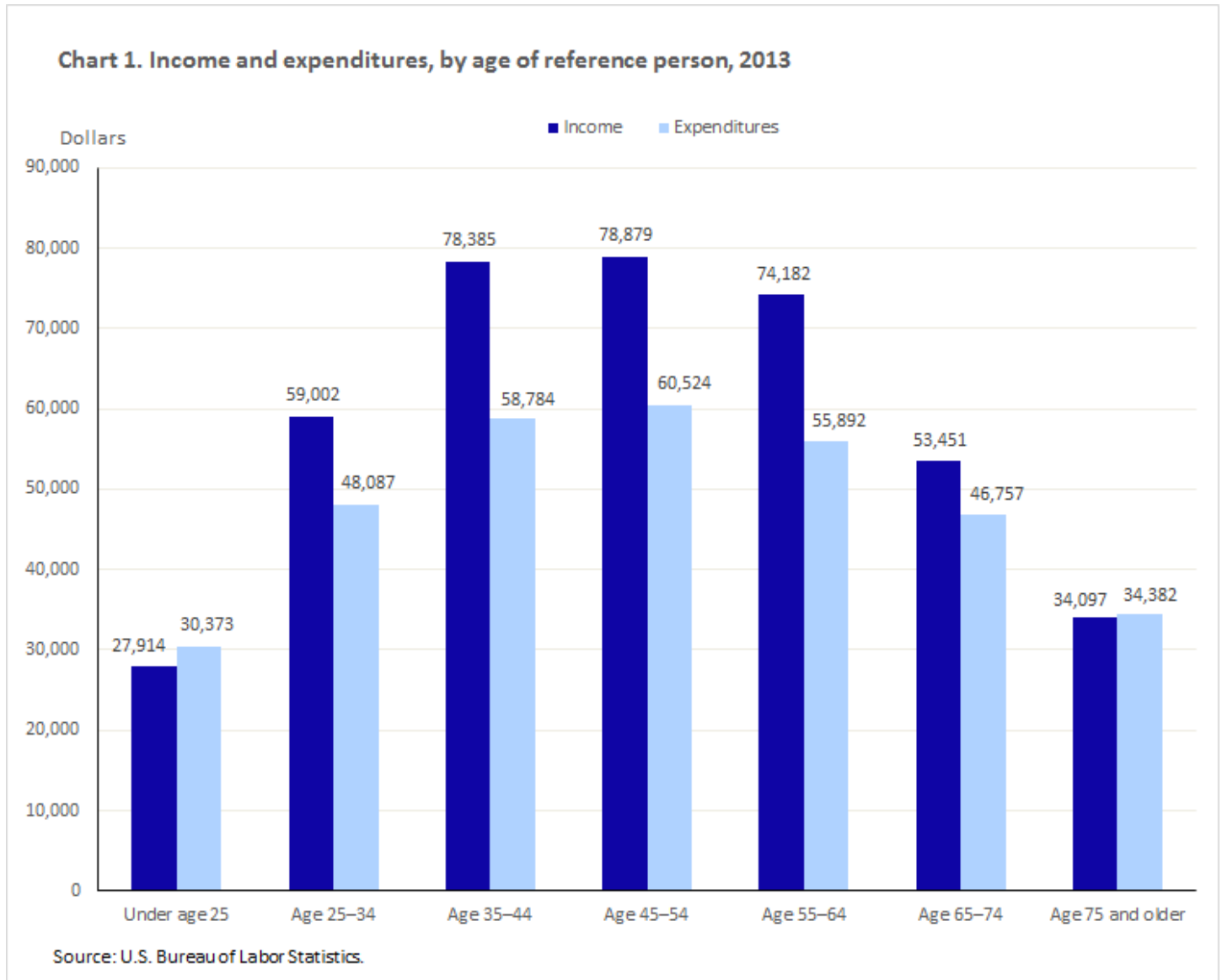
How Spending Has Changed

This chart shows total consumer spending in 2007 relative to 1947 levels. Hover to see more.

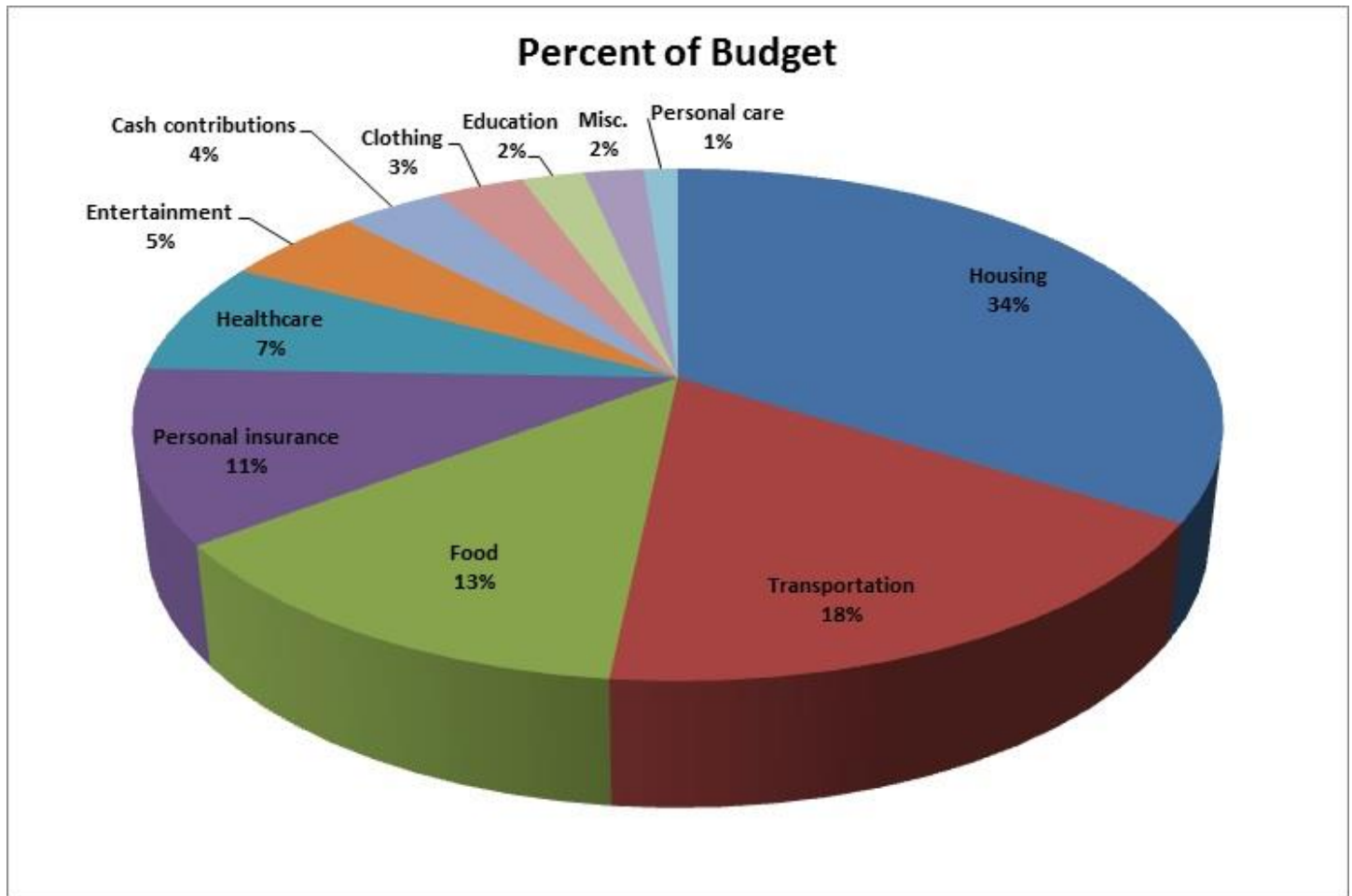


SOURCES: BUREAU OF ECONOMIC ANALYSIS, DEPARTMENT OF COMMERCE, CENSUS BUREAU

GRAPH 3



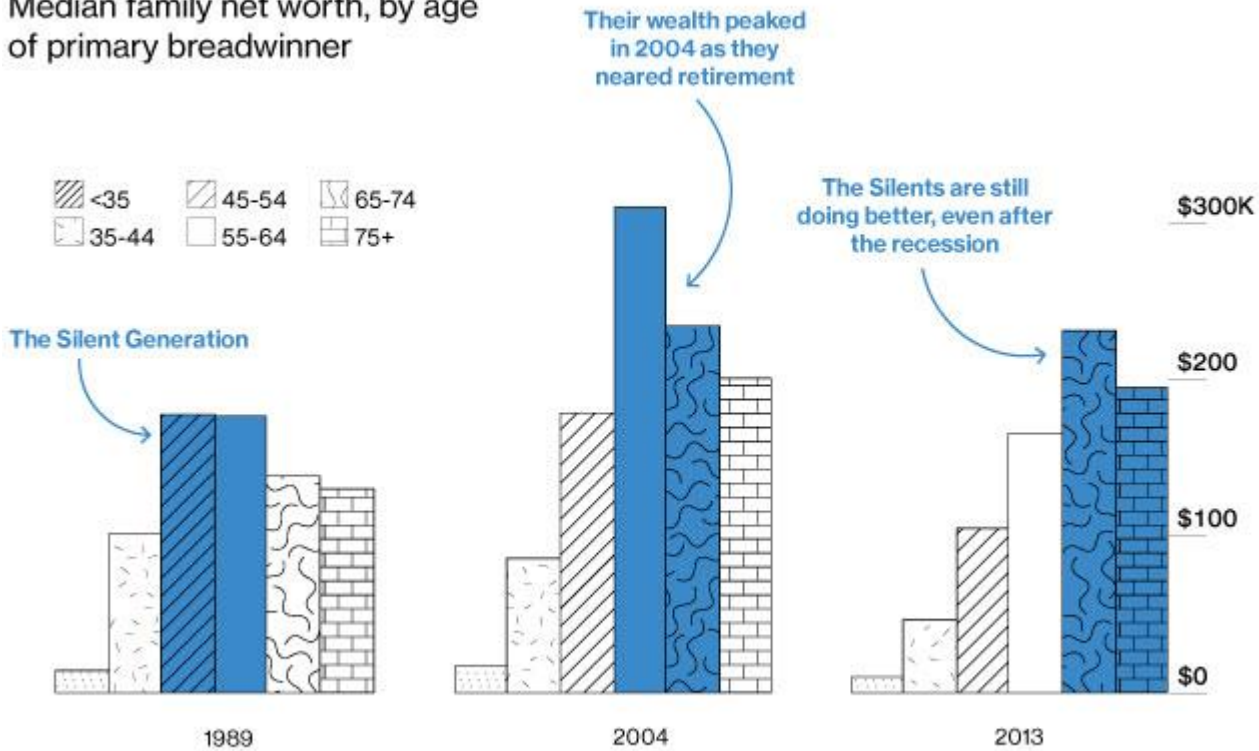
GRAPH 4



GRAPH 5

Silent Surge

Median family net worth, by age of primary breadwinner



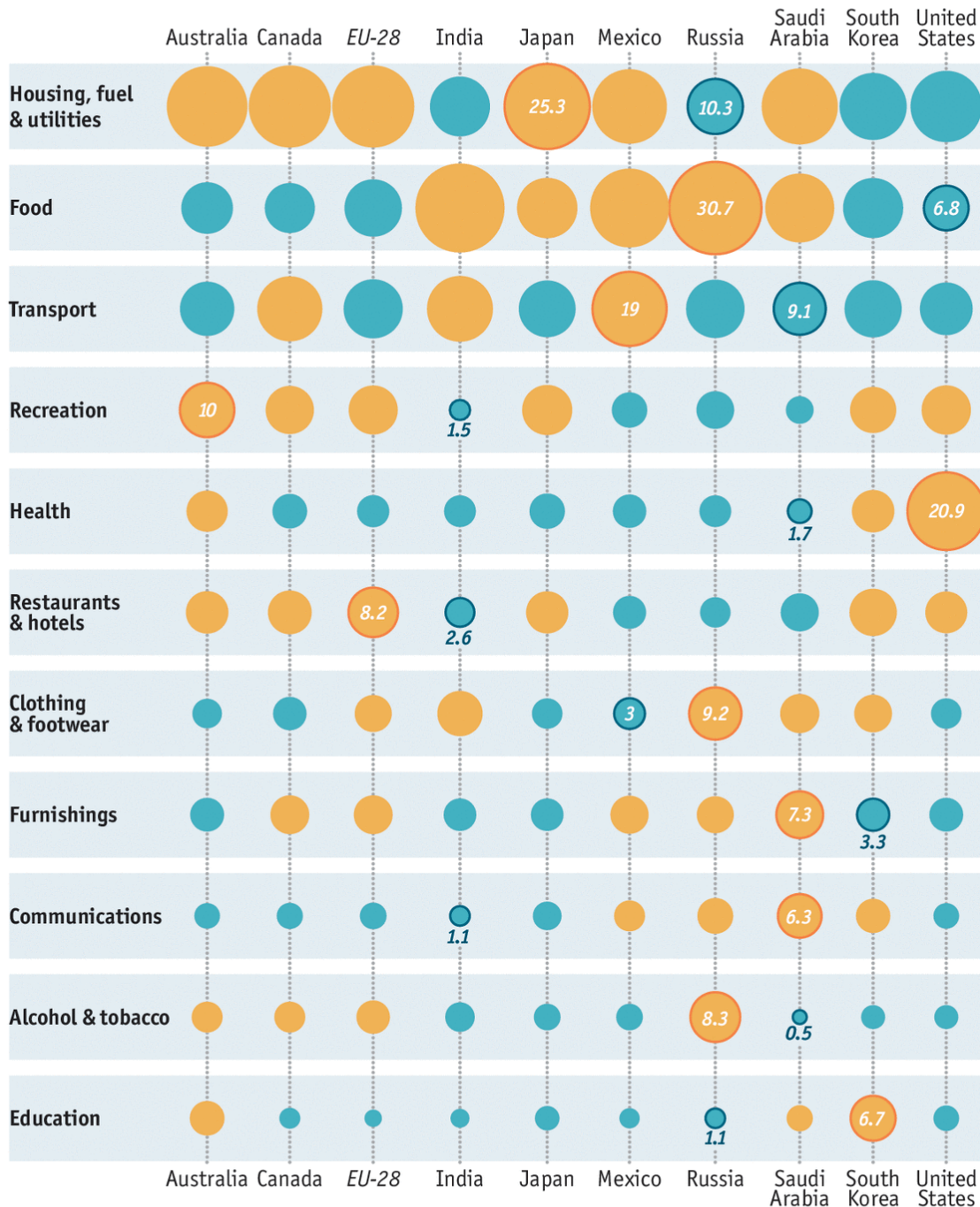
GRAPHIC BY BLOOMBERG BUSINESSWEEK; DATA: FEDERAL RESERVE SURVEY OF CONSUMER FINANCES

GRAPH 6

How they spend it

Household spending*, % of total, 2013 or latest, includes taxes

Within category ● highest spend ● above average ● below average ● lowest spend



Source: Eurostat
Economist.com

*Categories exclude miscellaneous spending