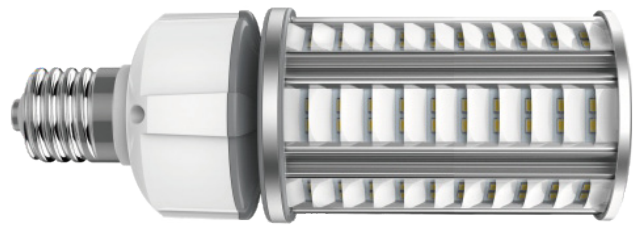


Downward Reflecting Light 54w



DESCRIPTION:

Touch-Plate's Downward Reflecting Lights are designed to offer better security, more lumens, and higher cost savings. Our Downward Reflecting Lights can offer energy savings of 70% or greater over traditional metal halide or high pressure sodium lighting. Our LEDs are optimal for retrofit installations.

PRODUCT FEATURES:

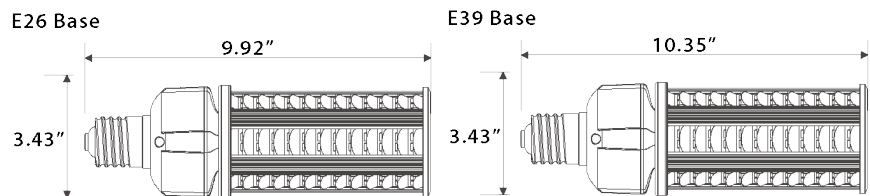
- Cooling heatsink fins, no fans
- >4kv surge protection
- Flame retardant material
- Lifetime of 50,000 hrs or greater
- UL Listed (E364363)
- DLC Listed
 - GKS28-54w-02D4 (E39 Base Only)
- 5 Year Limited Warranty

SPECIFICATIONS:

- Wattage: 54w
- Lumens: 5,700 (approx > 105lm/w)
- Equivalence: 200w MHL/HPS
- IP Rating: IP64
- LED Chips: LG5630
- PF: >0.90

PHYSICAL PARAMETERS:

- Dimensions
 - Diameter: 3.43"
 - Height:
 - 9.92"(E26)
 - 10.35"(E39)
- Weight
 - 2.20lbs



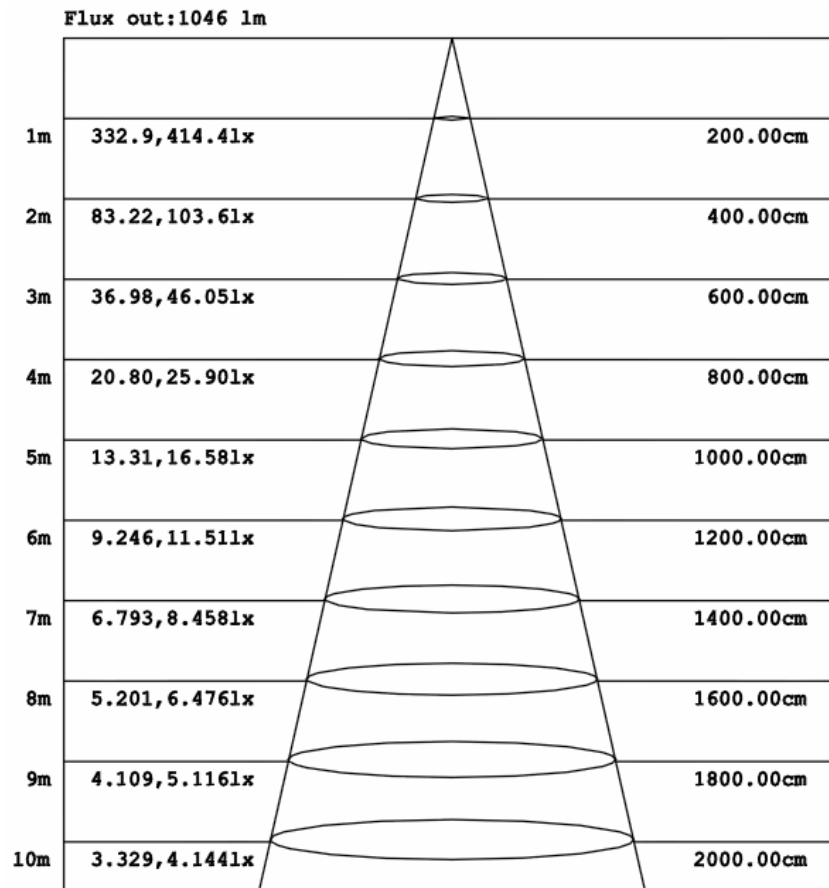


Downward Reflecting Light

ORDERING GUIDE

LED Type XXX -	Lumens - Wattage XXX - XXX-	CCT XX	Voltage X -	Base X
<ul style="list-style-type: none"> DRL Downward Reflecting Light 	<ul style="list-style-type: none"> 057-054 5,700lm - 54w 	<ul style="list-style-type: none"> 35 3500k 40 4000k 45 4500k 50 5000k 	<ul style="list-style-type: none"> U 120-277v 	<ul style="list-style-type: none"> 2 7\$ (% 7%+

PHOTOMETRIC



Downward Reflecting Light

INSTALLATION INFORMATION (WIRING)

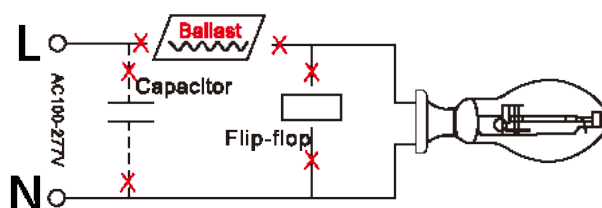
This product must be installed in accordance with National Electrical Code(NEC) and/or applicable local codes, by a qualified electrician.

DANGER - RISK OF SHOCK - DISCONNECT POWER BEFORE INSTALLATION

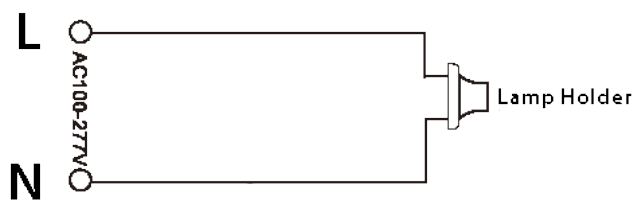
- Make the necessary 'HOT' (Black or Brown), 'Neutral' (White or Blue), and 'Ground' (Green) connections in an approved junction box.

INSTALLATION INFORMATION

- Remove the old ballast or disconnect the ballast from the existing lamp holder.



- Reconnect the wiring directly to the existing lamp holder.



- Install the new LED.

