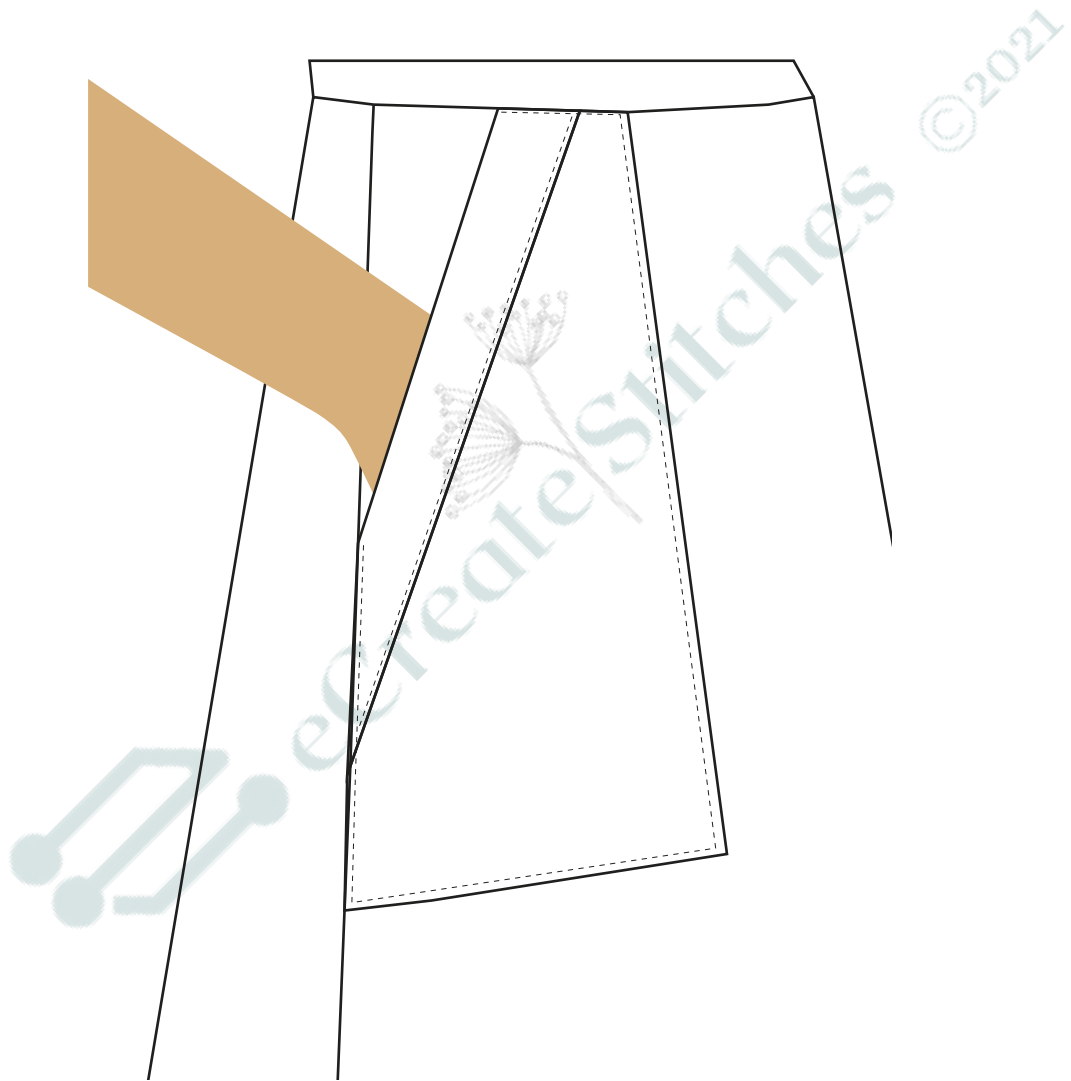


PATCH POCKET



Copyright Claim

All patterns, photos, diagrams, and information contained in this pattern are the property of eCreate Stitches © 2021 a division of Becker Projects Services Limited. All rights reserved. Reproduction and redistribution by any means are not permitted. No part of this pattern including, but not limited to, images, diagrams, or verbiage may be used to create other patterns. This pattern or any of its components may not be copied, emailed or shared in any way privately or in a group setting, including any and all social media forums. This pattern is for private use only. All components of this pattern are copyrighted and owned by eCreate Stitches ® All Rights reserved

Instructions for printing your pattern

Use Borderless printing

Print in Actual Size

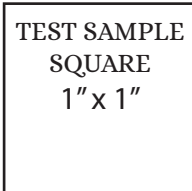
Or 100% Page Scale

Choose paper by PDF size

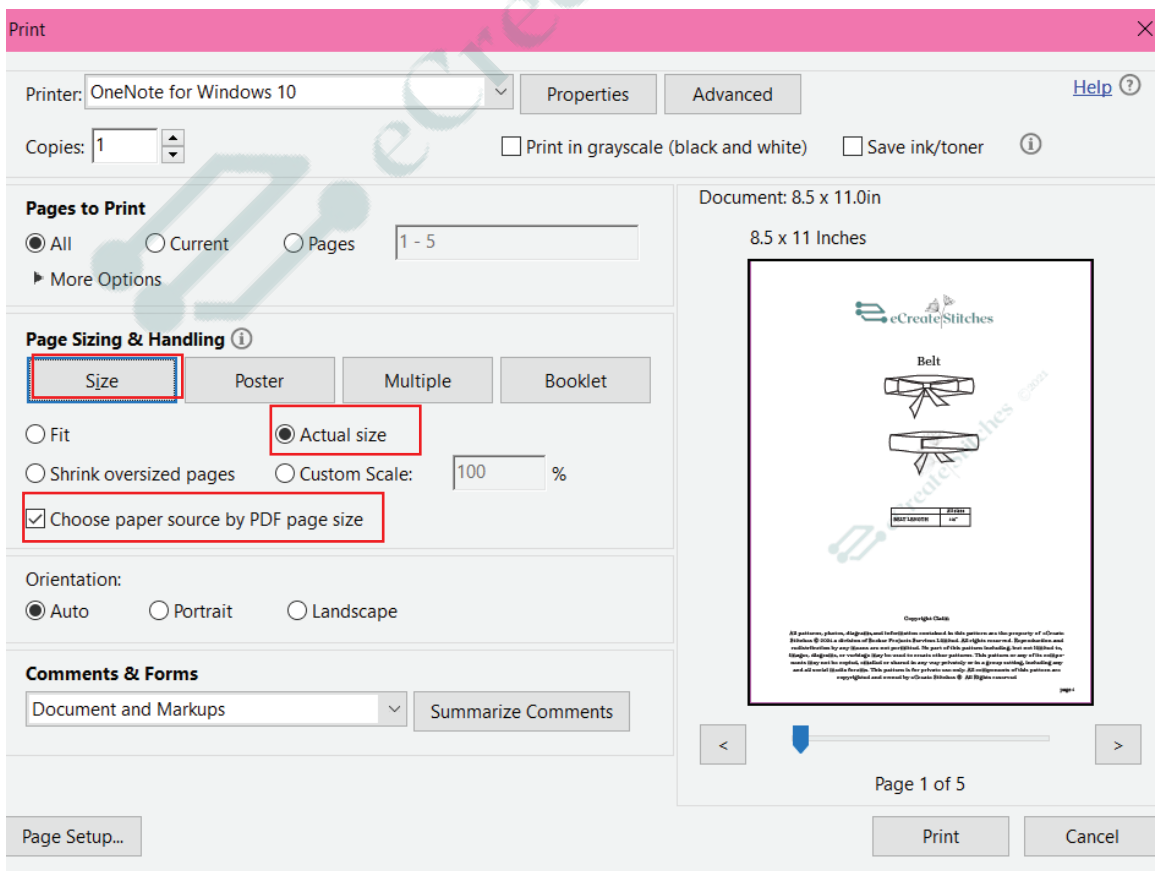
PLEASE NOTE: Certain printers can't print borderless.

If your pattern pages print with a white border, tape pages edge to edge at 4 page connections. If the pages have a white border some of the patterns lines will not appear.

IMPORTANT : Print first page of pattern to check the measurement of TEST SAMPLE SQUARE to make sure that the scaling is accurate before printing all pages.



Follow printer layout on page 4 and tape pages together using clear tape. Trace desired pattern size onto other paper or cut desired size out of the printed pattern.



Instructions for pattern pieces layout

Fabric, Tools and Accessories

Print all pattern pieces and layout instructions exactly as indicated on Page Two. WARNING: Do not change the scale of the page set up or the pattern will not work.

The pattern layouts below show how to best place the pattern pieces onto the fabric.

Fold Wrong Sides Facing Together, paying attention to and following the grain line on the fold. Place pattern pieces carefully along the fold.

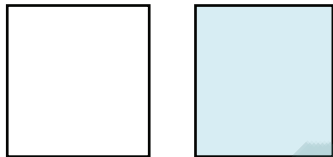
Carry/transfer over and mark with chalk/dressmaker chalk all buttonholes and placement notches to the wrong side of the material as well.

Recommended fabric: As the main fabric of the dress / skirt

44" wide	All sizes
	0.38 yd

Tools and Accessories:

- Scissors
- Iron
- Thread
- Machine needle

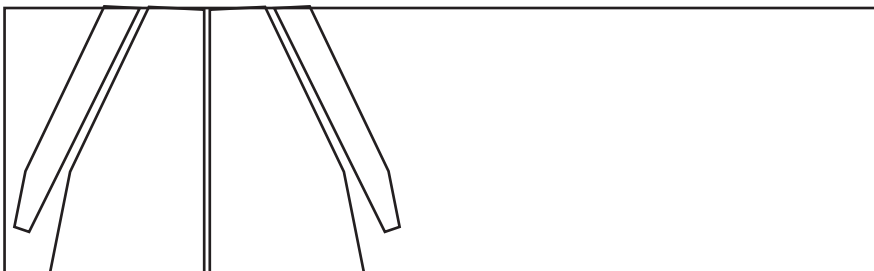
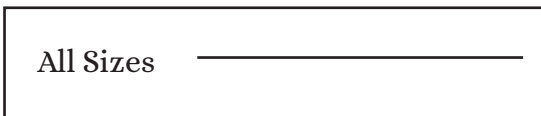


WHITE - right side BLUE - wrong side

MAIN FABRIC:

1: POCKETS , CUT X 2

2: POCKET TAPE, CUT X 2



Instructions for pattern layout

PATCH POCKET

All Sizes _____

TEST SAMPLE
SQUARE
1" x 1"

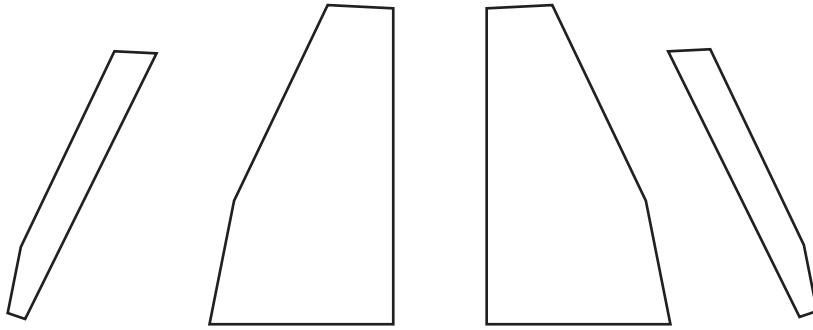
Copyright Claim

All patterns, photos, diagrams, and information contained in this pattern are the property of eCreate Stitches © 2021 a division of Becker Projects Services Limited. All rights reserved. Reproduction and redistribution by any means are not permitted. No part of this pattern including, but not limited to, images, diagrams, or verbiage may be used to create other patterns. This pattern or any of its components may not be copied, scanned or shared in any way privately or in a group setting, including any and all social media forums. This pattern is for private use only. All components of this pattern are copyrighted and owned by eCreate Stitches © All rights reserved.

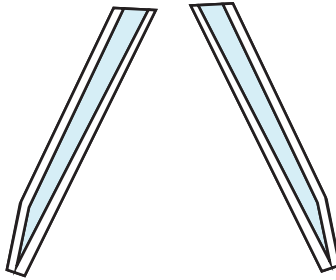
Pocket tape
Cut x 2
(** THIS PATTERN
INCLUDES 1/4" SEAM
ALLOWANCE
**)

Pocket
Cut x 2
(** THIS PATTERN INCLUDES 1/4" SEAM ALLOWANCE **)

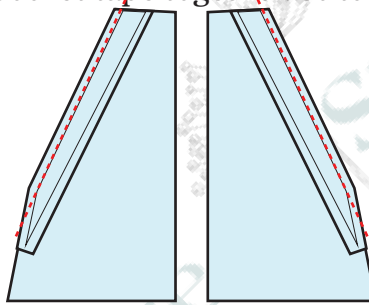
1. Cut the pieces out of the main fabric.



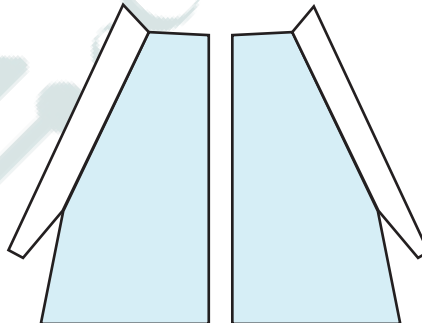
2. Turn the long sides of the pocket tape by 3/8", wrong sides facing together and press.



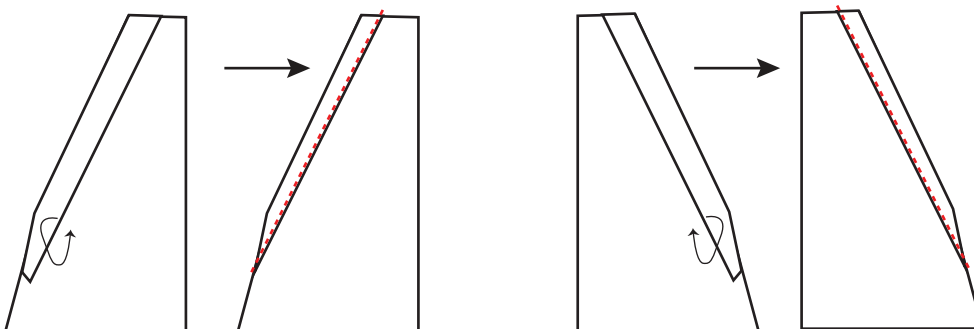
3. Open the pressed edge of the pocket tape and match with the pocket as shown, the wrong side of the pocket with the right side of the pocket tape together. Stitch.



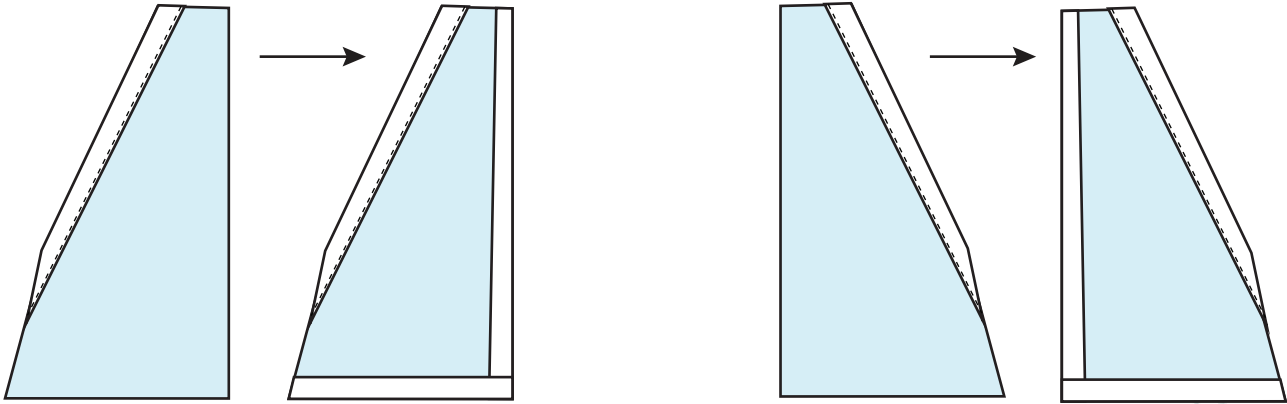
4. Press with pocket tape away from pocket.



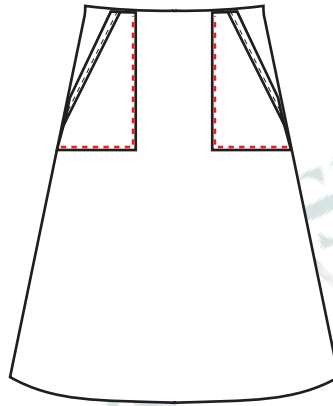
5. Fold pocket tape to right side of the pocket, tucking the folded edge in and topstitch.



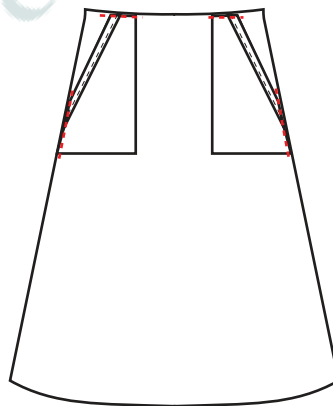
6. Turn the sides as shown, by $\frac{3}{8}$ ", wrong sides facing together and press.



7. Place the pocket on the right side of the front skirt, right side facing up. Topstitch all sides that you pressed in step 5.



8. Stay Stitch the top and the side of the pocket onto the seam allowance on the skirt.



9. Continue with sewing the skirt/dress and make sure that the top and the side of the pockets are sewn in the seam allowance.

PATCH POCKET

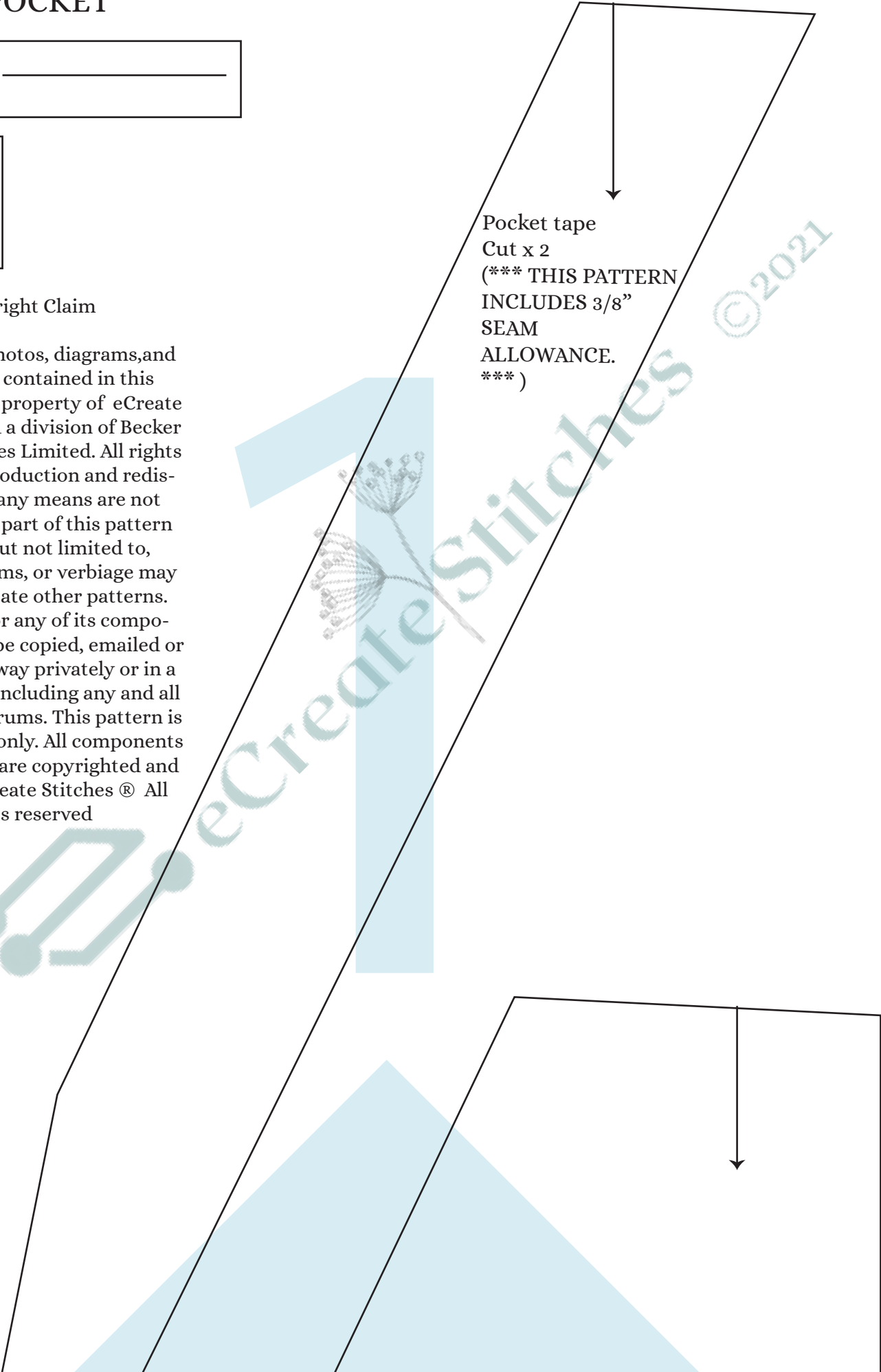
All Sizes _____

TEST SAMPLE
SQUARE
1" x 1"

Copyright Claim

All patterns, photos, diagrams, and information contained in this pattern are the property of eCreate Stitches © 2021 a division of Becker Projects Services Limited. All rights reserved. Reproduction and redistribution by any means are not permitted. No part of this pattern including, but not limited to, images, diagrams, or verbiage may be used to create other patterns.

This pattern or any of its components may not be copied, emailed or shared in any way privately or in a group setting, including any and all social media forums. This pattern is for private use only. All components of this pattern are copyrighted and owned by eCreate Stitches ® All Rights reserved



Pocket tape
Cut x 2
(*** THIS PATTERN
INCLUDES 3/8"
SEAM
ALLOWANCE.
***)

eCreate Stitches ©2021



Pocket
Cut x 2
(*** THIS PATTERN INCLUDES 3/8" SEAM ALLOWANCE.***)