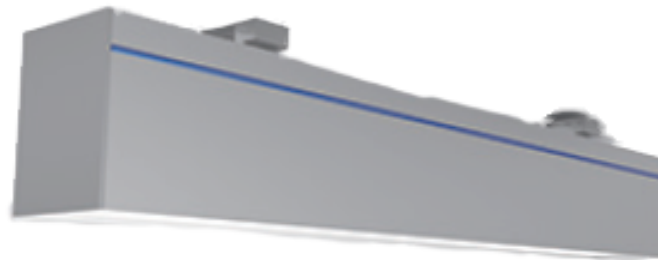


Linear Decorative Light 4ft 30w



DESCRIPTION:

Touch-Plate's Linear Decorative Lights are designed to offer better security, more lumens, and higher cost savings. Our Linear Decorative Lights can offer energy savings of 70% or greater over traditional T12 and T8 bulbs. Our LEDs are optimal for new construction and retrofit installations.

PRODUCT FEATURES:

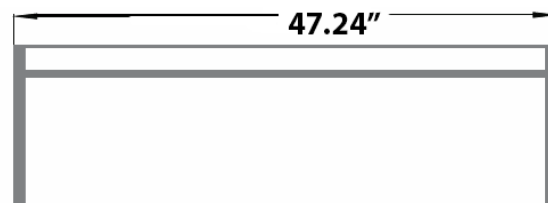
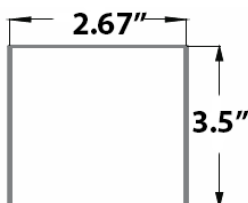
- Seamless docking (including "T" shape, "+" shape, and "L" shape)
- Excellent heat dissipation
- Aluminum housing
- No UV, lead, or mercury
- UL Listed (481648)
- DLC Listed
 - L021200-30CO
- Lifetime of 50,000 hrs or greater
- 5 Year Limited Warranty

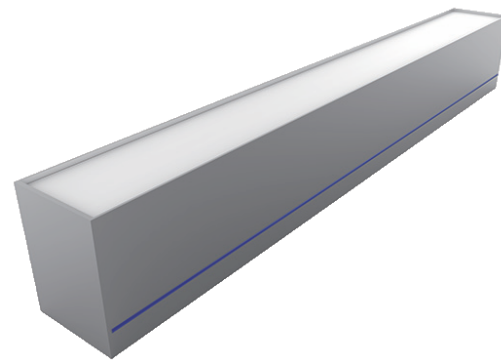
SPECIFICATIONS:

- Wattage: 30w
- Lumens: 4,200 (approx > 140lm/w)
- Equivalence: 2: 36w T8
- LED Chips: SMD 2835
- PF: >0.90

PHYSICAL PARAMETERS:

- Dimensions
 - Length: 47.24"
 - Depth: 3.5"
 - Width: 2.67"
- Weight
 - 5.29 lbs





Linear Decorative Light

ORDERING GUIDE

LED Type XXX -	Lumens - Wattage XXX - XXX-	CCT XX	Voltage X	
<ul style="list-style-type: none"> LD4 Linear Decorative 4ft 	<ul style="list-style-type: none"> 042 - 030 4,200lm - 30w 	<ul style="list-style-type: none"> 30 3000k 40 4000k 50 5000k 60 6000k 	<ul style="list-style-type: none"> U 120-277v 	

ACCESSORIES

(specified at time of order)

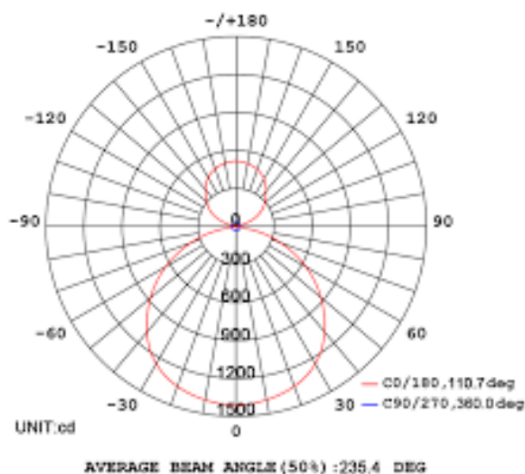
- Frosted Lens (Standard)
- Clear Lens

ACCESSORIES

(specified at time of order)

- Emergency Backup
- Photocontrol Sensor
- S Hook Clip: Medium or Large
- Stainless Steel Magnetic 'O' Hook
- 3 Pin Splice Connector
- Wall Mount Installation Kit
- Suspended Mount Installation Kit
- Stainless Steel Cable: 2ft/.5m, 3ft/1m, 7ft/2m, 10ft/3m, or 20ft/6m
- No Plug Extension: 3ft/1m or 10ft/3m
- 3 Prong Plug: 7ft/2m

PHOTOMETRIC



Linear Decorative Light

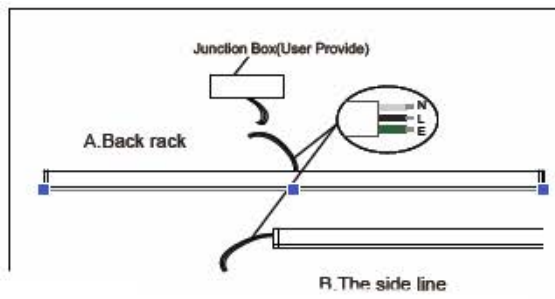
INSTALLATION INFORMATION (WIRING)

This product must be installed in accordance with National Electrical Code(NEC) and/or applicable local codes, by a qualified electrician.

DANGER - RISK OF SHOCK - DISCONNECT POWER BEFORE INSTALLATION

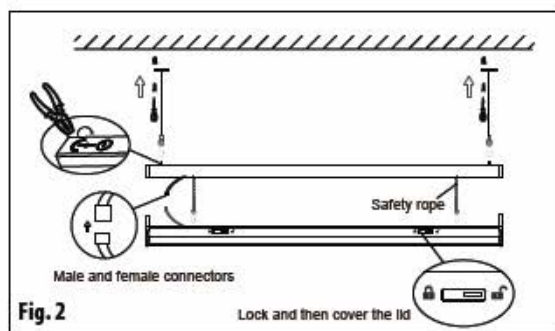
- Plug in the Linear Decorative Light or make the necessary 'HOT' (Black or Brown), 'Neutral' (White or Blue), and 'Ground' (Green) connections in an approved junction box.

INSTALLATION INFORMATION



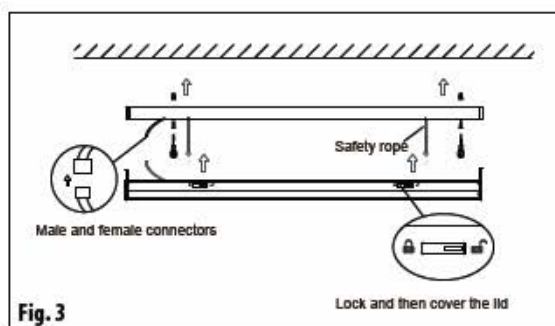
Surface Mounting

Connect the wire junction box



Suspending

1. Put in correct position and drill holes
2. Screw steel cables into the ceiling
3. Hang the fixture under steel cable and secure the fixture
4. Adjust fixture till correct



Ceiling Mounted

1. Put in correct position and drill holes
2. Screw the clip on the ceiling tightly
3. Install lamp into clips
4. Adjust fixture till correct