

# MECHANICAL KEYBOARD 100KEY

# QUICK START

**QUALIFIED**

Inspectors: **QC PASS**

## Warranty Description

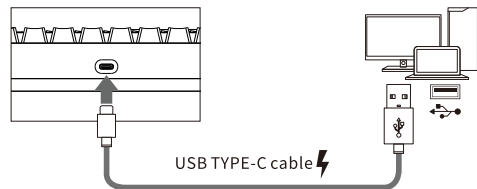
Product number: \_\_\_\_\_  
 Purchase date: \_\_\_\_\_  
 Username: \_\_\_\_\_  
 Contact number: \_\_\_\_\_  
 Address: \_\_\_\_\_  
 Sales unit: \_\_\_\_\_

This product offers worry-free after-sales service with a 12-month warranty from the date of purchase.

## Product Parameters

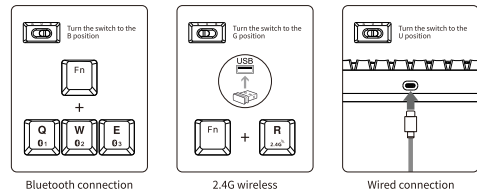
Version mode: Bluetooth/2.4G/USB	Backlight color: Full color RGB/Monochrome
Keyboard switch: DIY compatible with most switches	Product size: 36.9×12.1×4.3CM
System compatibility: Windows/Mac/iOS/Android	Package contents: Keyboard/Data cable/ Instruction manual/Receiver

## Wired Mode and Charging



Charging instructions:  
 1. Low battery indication: When the battery is low, the FN key will flash red quickly until the keyboard is turned off.  
 2. Charging indication: When plugging in the TYPE-C cable to charge, the FN key will light up in red for 3 seconds and then synchronize with the backlight to prompt charging.  
 3. Synchronize with the backlight when fully charged.

## Bluetooth/2.4G Connection/Wired Connection



Bluetooth connection

2.4G wireless

Wired connection

EN 1

1. Bluetooth device connection switching: Turn the bottom switch to the B position, short press FN+Q/W/E switch device 1.2.3, the corresponding backlight flashes 3 times when switching Bluetooth device. After success, if you don't remember which key combination corresponds to the current device, you can press FN+T to display it (The current corresponding key combination flashes 3 times).

- ① Pairing Bluetooth device 1: Long press FN+Q for 3 seconds, the Q key backlight flashes quickly. The light is synchronized with the backlight when the code is successfully paired.
- ② Pairing Bluetooth device 2: Long press FN+W for 3 seconds, the W key backlight flashes quickly. The light is synchronized with the backlight when the code is successfully paired.
- ③ Pairing Bluetooth device 3: Long press FN+E for 3 seconds, the E key backlight flashes quickly. The light is synchronized with the backlight when the code is successfully paired.

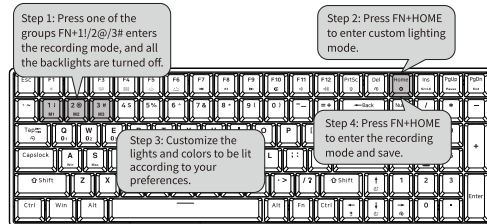
2. Match code 2.4G wireless: Turn the bottom switch to G position, long press the FN+R button for 3 seconds, the corresponding backlight flashes rapidly, insert the receiver into the PC, the pairing is successful, the light and the backlight are synchronized.

Notes: If the keyboard has been paired with Bluetooth or 2.4G, the wireless channel indicator of the previous connection will flash when switching to Bluetooth or 2.4G next time, and it will stop flashing when connected to the device. If you don't remember which key combination corresponds to the current device, you can press FN+T to display it (the current corresponding key combination flashes 3 times).

3. Wired connection: Turn the bottom switch to the U position, insert the TYPE-C interface of the data cable into the keyboard interface, and insert the USB interface into the computer interface.

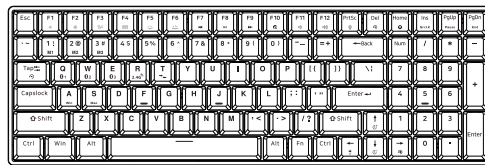
## Keyboard Combination Shortcuts

### 1. Backlight recording method



Note\* (If the light is assigned on FN+1! Press FN+1! If the light is assigned on FN+2@ Press FN+2@ If the light is assigned on FN+3# Press FN+3#).

EN 2



### 1. Windows System Multimedia Shortcut Keys

Note: Only computers that support shortcut key brightness adjustment in the WINDOWS system can adjust the screen brightness.

FN + A	Enter WIN system	FN + F7	Previous
FN + F1	Screen brightness decrease	FN + F8	Pause/Play
FN + F2	Screen brightness increase	FN + F9	Next song
FN + F3	Multitasking windows	FN + F10	Mute
FN + F4	Program list	FN + F11	Volume down
FN + F5	Backlight brightness decrease	FN + F12	Volume up
FN + F6	Backlight brightness increase		

### 2. MAC System Multimedia Shortcut Keys

Press FN+(F1-F12) corresponding to F1-F12 keys in MAC system.

FN + S	Enter MAC system	Win + Alt	Swap the Win key with the Alt key
FN + F1	F1	FN + F7	F7
FN + F2	F2	FN + F8	F8
FN + F3	F3	FN + F9	F9
FN + F4	F4	FN + F10	F10
FN + F5	F5	FN + F11	F11
FN + F6	F6	FN + F12	F12

EN 3

Directly press the F1-F12 keys corresponding to the F1-F12 multimedia keys of the MAC system.

F1	Screen brightness decrease	F7	Previous
F2	Screen brightness increase	F8	Pause/Play
F3	Multitasking windows	F9	Next song
F4	Program list	F10	Mute
F5	Backlight brightness decrease	F11	Volume down
F6	Backlight brightness increase	F12	Volume up

### 3. Backlight Shortcut Keys

FN + ↑	Backlight speed up	FN + Tab	Backlight switching
FN + ↓	Backlight speed down	FN + PrtSc	Turn off/on backlight
FN + ←	Switch the dynamic backlight direction	FN + Home	Backlight customization
FN + →	Switch monochrome backlight (Monochrome keyboard without this function)		

### 4. Special Shortcut Keys

FN + Del	Press and hold for 3 seconds to restore factory settings	FN + PgUp	PAUSE
FN + INS	SCROLL LOCK	FN + PgDn	END

## Precautions

This manual is for reference only and is subject to change without notice. Thank you for your understanding.

EN 4