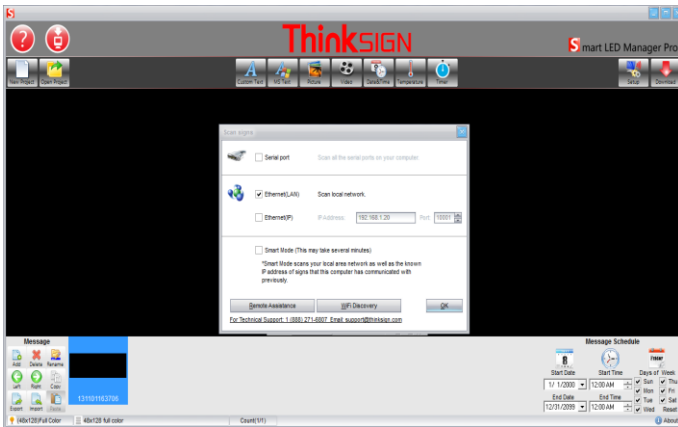


Changing time in Smart LED Manager Pro

Changing the time for the fall and spring time changes is easy, just follow these simple instructions.

The Setup Screen

After opening the software, click on the setup (sync) icon on the top right of the screen



Original interface software



New interface software

Select Sign

Select your sign and click ok



Original interface software



New interface software

The Download Screen

Once you get the download screen, click on the Common (Basic) Tab, and simply select Set Sign's Date and Time to sync with the time on your computer. Once this is complete, your sign will reflect the correct time.



Original interface software



New interface software

ThinkSIGN

Technical Support Information

Monday-Friday
8:30am-5:30pm (Eastern Time Zone)
Toll Free: 888-271-6807

Support@Thinksign.com