

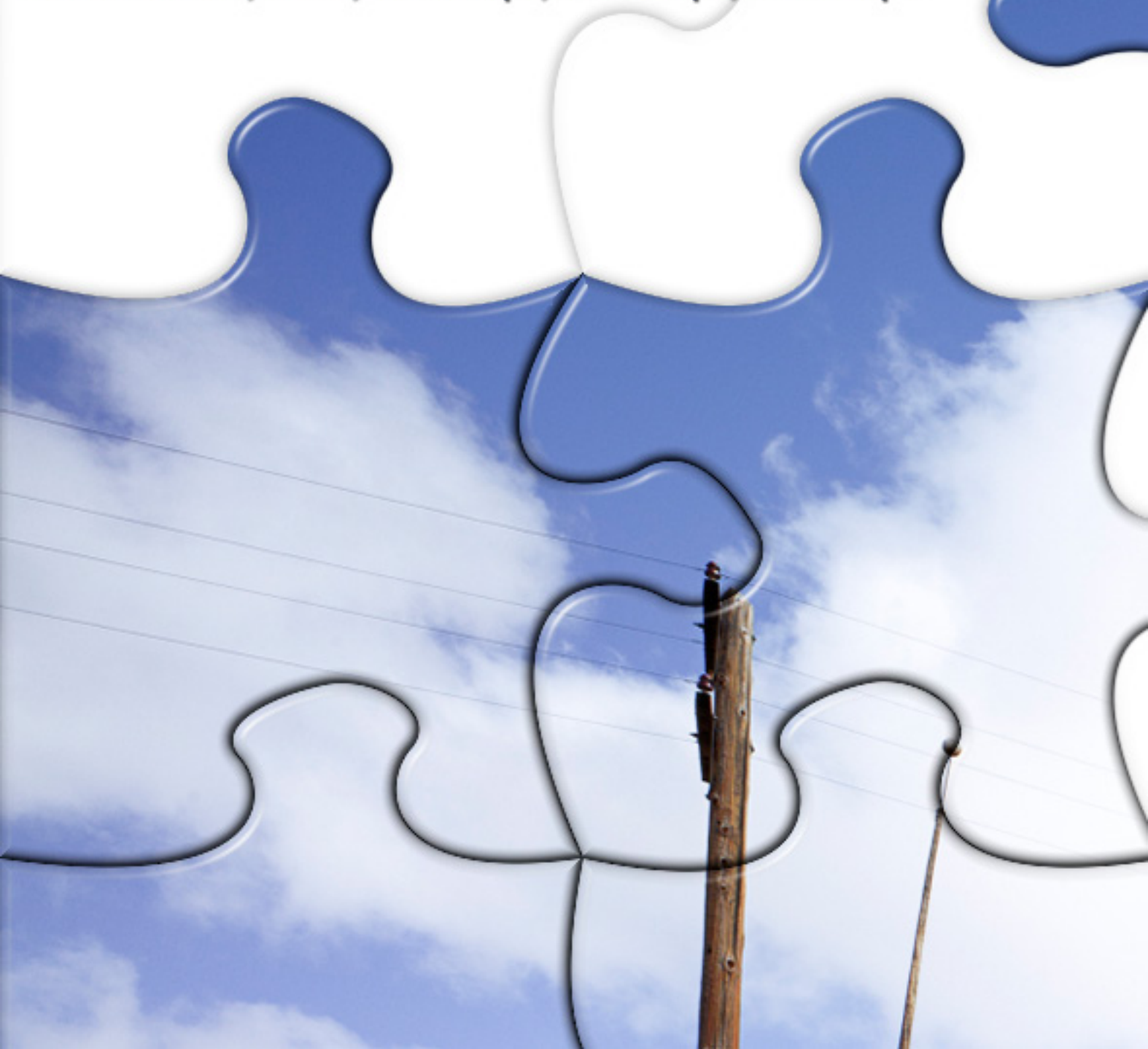
Great looking and easy to use

# Puzzle Overlays PSD Templates

4 different effects: All pieces, 10 & 20% knockout

Preview before exporting with single or all effects from once.

5 sizes: 10x8in, 5x7in, 800x600px, 600x840px, 640x480px



# Contents

Requirements and description.....	1
What is included in package.....	1
How things works.....	1
<b>Step by step instructions.....</b>	<b>2</b>
Step 1 Open and duplicate template.....	2
Step 2 Double-click Smart Object layer to open it in new tab.....	2
Step 3 Place image you want to use.....	2
Step 4 Merge layers.....	2
Step 5 Close Smart Object tab and confirm changes.....	3
Step 6 Preview and save image with puzzle overlay.....	3
Step 7 Export image with all available overlays.....	3
<b>Advaced use for better results.....</b>	<b>3</b>
Step 8 Manipulate with effect.....	3
Step 9 Turn On Background Layer.....	4
Step 10 Expand Canvas Size.....	4
Step 11 Create new Pattern Fill layer.....	4
Step 12 Add some type.....	4
Step 13 Add Drop Shadow.....	5
<b>Catalogue.....</b>	<b>6</b>
10x8inches templates (overlays).....	6
5x7inches templates (overlays).....	6
800x600px templates (overlays).....	7
600x840 templates (overlays).....	7
640px480 templates (overlays).....	8

# Requirements and description

Requirement to use Puzzle Overlays PSD Templates is Adobe Photoshop.

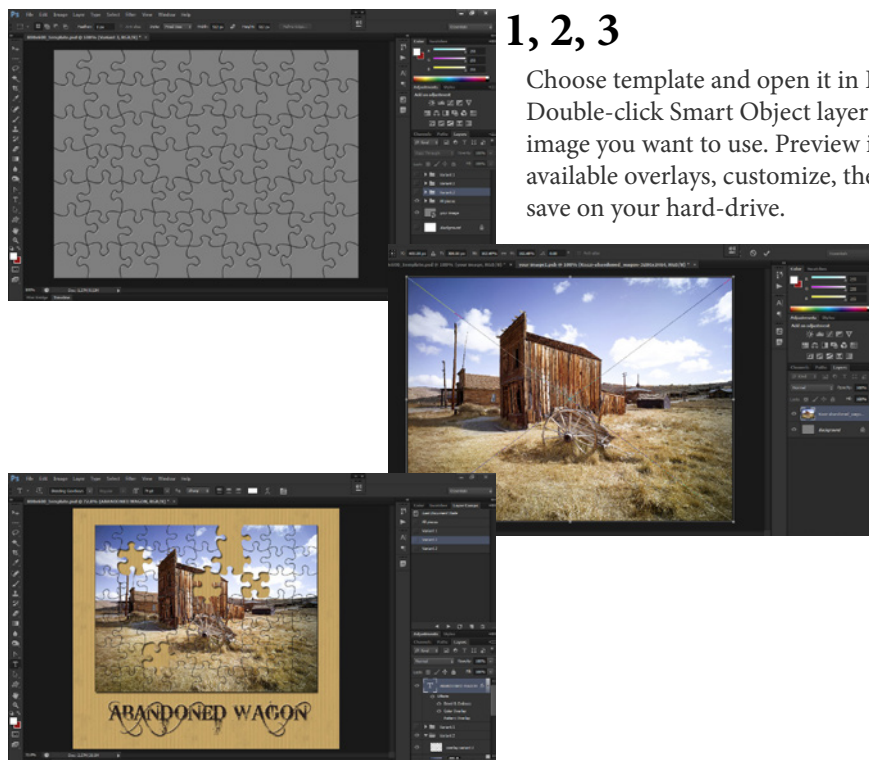
## What is included in package

Complete package Puzzle Overlays PSD Templates contains total of 25 PSD templates with puzzle overlays. Every of available sizes: 10x8in, 7x5in, 800x600px, 600x840px and 640x480px have following 5 templates:

1. Base template (10x8, 7x5, 800x600... template.psd) with 4 puzzle overlays: All pieces, 10% knock-out (2 variants) and 20% knockout. Number of pieces vary depend on overlay size. Most pieces have 10x8in overlay while least puzzle pieces is present in 640x480px.
2. All pieces template without any knockout (missing) piece.
3. Variant 1 template with 10% knockout (missing) pieces.
4. Variant 2 template with 10% knockout (missing) pieces.
5. Variant 3 template with 20% knockout (missing) pieces.

## How things works

It is extremely easy to use Puzzle Overlays templates. Open any template, double click on Smart Object layer, place image you want to use then close Smart Object tab. What you will get when using single effect template is final effect. When using base template (10x8, 7x5, 800x600... template.psd) you can preview all available overlays and decide which one you like most to save on your hard drive. You like all of them? No problem, export image with all puzzle effect overlays from once in any of common formats: PSD, TIFF, JPG, PNG.



# Step by step instructions

In first part of tutorial I will describe how to use overlay templates in probably easiest way but without any customization so you will get result with transparent background where puzzle pieces are missing. Use this instructions when you want to use puzzle overlay effect as:

- Element in some other composition. Save image with effect in PSD file format and place it later from File > Place in any other document.
- PNG image with transparent background. In case you want to use image on your Web site or blog where background for missing pieces will be color or pattern of page.
- JPG image with white color as background for missing pieces. White is default color when saving images with transparency in JPG file format what can be customized from Matte drop-down list in Save for Web dialog. When you want to save image in JPG file format there is always an option to reveal Background layer which is hidden by default and Fill it with color or pattern.

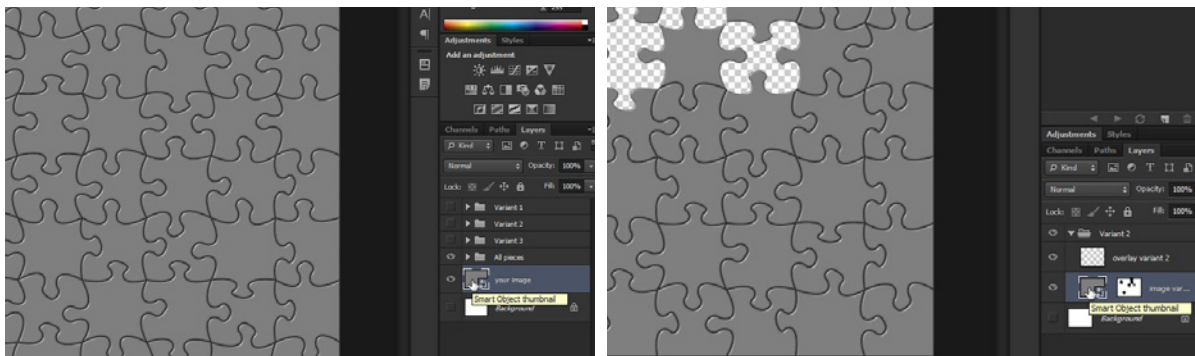
Later I will explain you how to manipulate with puzzle effect and make it more or less obvious, expand canvas size, add drop shadow and pattern background for much better and catchy results.

## Step 1 Open and duplicate template

First step is to open and duplicate template. It is recommended to always duplicate template and keep original as provided to you. You can preview templates at the end of this user guide. So with size of image you want to use in mind start Photoshop, go to File > Open and navigate to Puzzle Overlay > Templates folder on your drive (Desktop). There are 5 sub-folders with different template sizes: 10x8inches, 7x5inches, 800x600px, 600x840px and 640x480px. Open any of sub-folders, select template then click Open button at the bottom of Open dialog. With template open in Photoshop go to Image > Duplicate, type new name or just accept defaults by clicking OK button. Close file with original template and continue working with duplicated.

## Step 2 Double-click Smart Object layer to open it in new tab

When you have duplicated template open in Photoshop first task is to double click Smart Object layer to open it in separate tab or window. When using base template (10x8, 7x5, 800x600... template.psd) file that will be **your image** layer. With other templates expand group (folder) then double click Smart Object thumbnail which always have layer mask thumbnail on the right side.



## Step 3 Place image you want to use

When new window or tab with Smart Object opens, go to File > Place and navigate to image you want to use, select it then click Place button. Adjust size and position of placed image if needed, then confirm on checkmark in options bar or by pressing Enter/Return.

## Step 4 Merge layers

At this point I will suggest you to flatten layers. When you have image placed and adjusted as you want it, flatten image or merge layers from Layer > Merge Down, Merge Visible or Flatten Image.

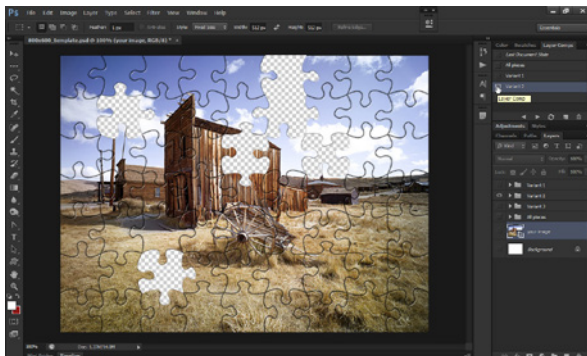


## Step 5 Close Smart Object tab and confirm changes

Last step is to close Smart Object tab or window (click x in top right corner of tab or window) and to confirm changes on Yes button in pop-up window which will appear.

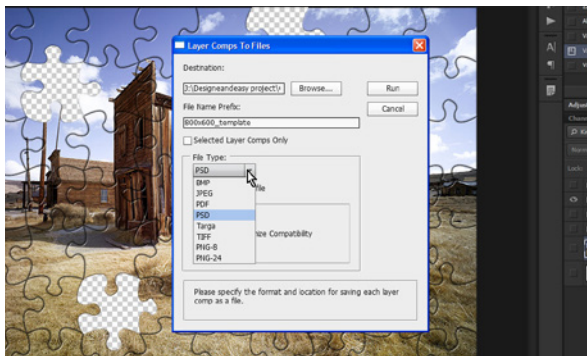
## Step 6 Preview and save image with puzzle overlay

After you return to window or tab with template you will see result instantly. When using base template (template.psd) you can preview all overlays from Layer Comps panel (Window > Layer Comps). With Layer Comps panel expanded click square in front of each saved comp to see result with different overlays. Leave composition you like active then go to File > Save or Save As. You can also resample (change Width and Height) document from Image > Image Size but I do not recommend you heavy resampling. Note that background layer is always hidden, click on square on left side of Background layer then fill it with color or pattern of your choice if you want custom background color or pattern where pieces of puzzle are missing. When using **All pieces** and **Variant** templates you do not have what to preview, there is always single puzzle overlay so Layer Comps are missing in that case.



## Step 7 Export image with all available overlays

In case you are using base template (10x8, 7x5, 800x600... template.psd) there is option to export or save image with all variants of puzzle overlay effect. Go to **File > Layer Comps to Files**. Navigate to folder where you want to save files (**Destination:**) and choose file format from **File Type:** drop-down list.



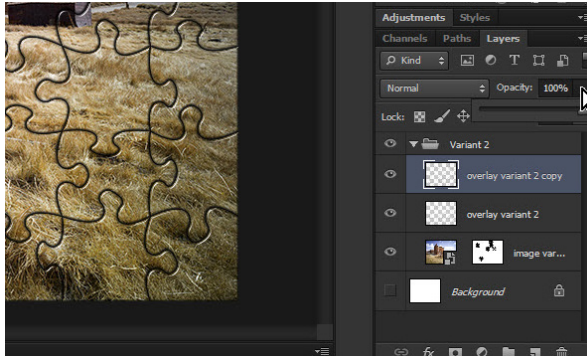
# Advanced use for better results

In this part of tutorial I will give explain you how to customize templates for much better and catchy results. I will assume that you have read previous steps for base use and you know how to: open, duplicate template, place image you want to use and preview Layer Comps (steps 1-6).

## Step 8 Manipulate with effect

For this step I will start after step 5 or after closing Smart Object tab/window. For simplicity I will use **800x600 Variant 2.psd** file. Lets say you want more strong or distinct effect. Expand **Variant 2** group (folder) and select **overlay variant 2** layer. Next step is to press Ctrl/Cmd + J to duplicate layer and get more strong effect. In case effect or overlay is too strong for your likeness, lower opacity for duplicated

layer (*overlay variant 2 copy* in this case). With **overlay variant 2 copy** layer selected click triangle on the right side of **Opacity** in top right corner of Layers panel and drag slider to the left.

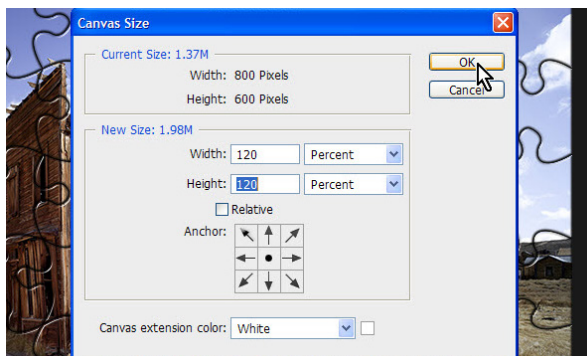


### Step 9 Turn On Background Layer

At this point you will need to turn on Background layer or to make it visible. Click on empty square on the left side of Background layer and eyeball will appear along with white background color instead of transparent pixels.

### Step 10 Expand Canvas Size

Next step is to expand Canvas Size to get more room around image. Go to Image > Canvas Size. I will leave relative option unchecked and set measurement unit to Percent. Now I will type 120 in both: Width and Height fields what means that canvas size will be expanded for 10% on each of four sides. Leave anchor points in the middle (Anchor:) as they are and Canvas extension color to White. Click OK to confirm and exit Canvas Size dialog. I will revisit one more time Canvas Size, click at arrow on top in **Anchor:** section to expand canvas size for 20% to the bottom.



### Step 11 Create new Pattern Fill layer

It is time to create new Pattern Fill layer with some nice pattern for background. Select Background layer then click **Create new fill or adjustment layer** icon at the bottom of Layers panel. Click on **Pattern...** option in expanded list. When Pattern Fill dialog opens, load Color Paper patterns or patterns provided in **Puzzel Overlay > Patterns** folder. Select pattern you like and click OK button to confirm and exit dialog Pattern Fill.

### Step 12 Add some type

At this point I will add some type at the bottom of image with overlay. I have some extra room below image added in Step 10. Extra space I am pointing is 20% expanded canvas size to the bottom in second visit of Canvas Size dialog. Depend on your intent, type may need some layer effects for better overall appearance.

### Step 13 Add Drop Shadow

Last task is to add Drop Shadow effect to the image. Right/Cmd click on **image variant 2** layer (this is example) and choose Blending Options from the list. When Layer Style dialog opens click on drop Shadow and Adjust size and position of effect. Lastly confirm on OK button in top right corner. Here is my final result:



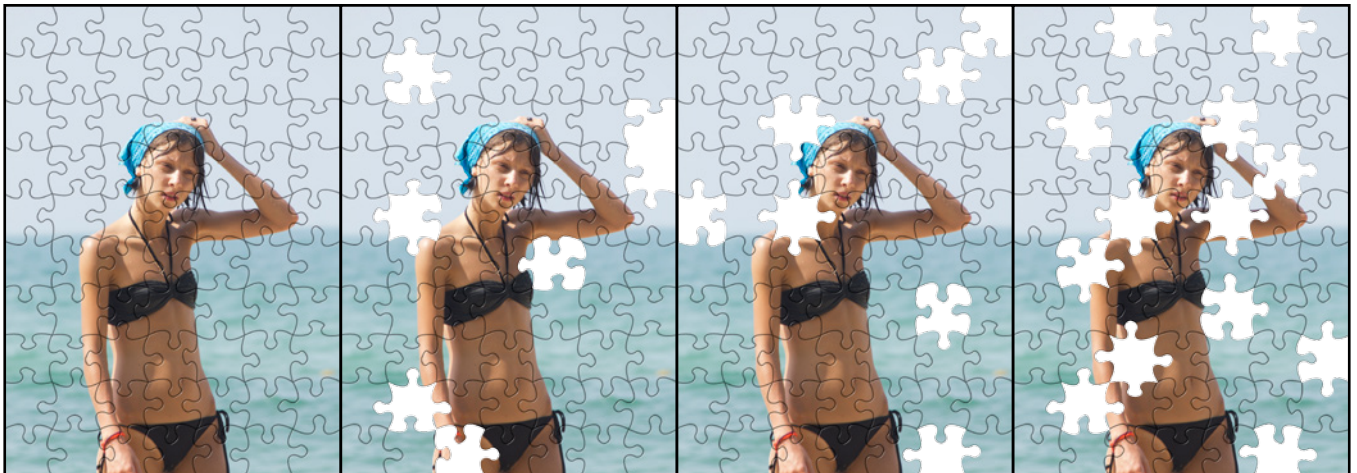


# *Catalogue*

## 10x8inches templates (overlays)

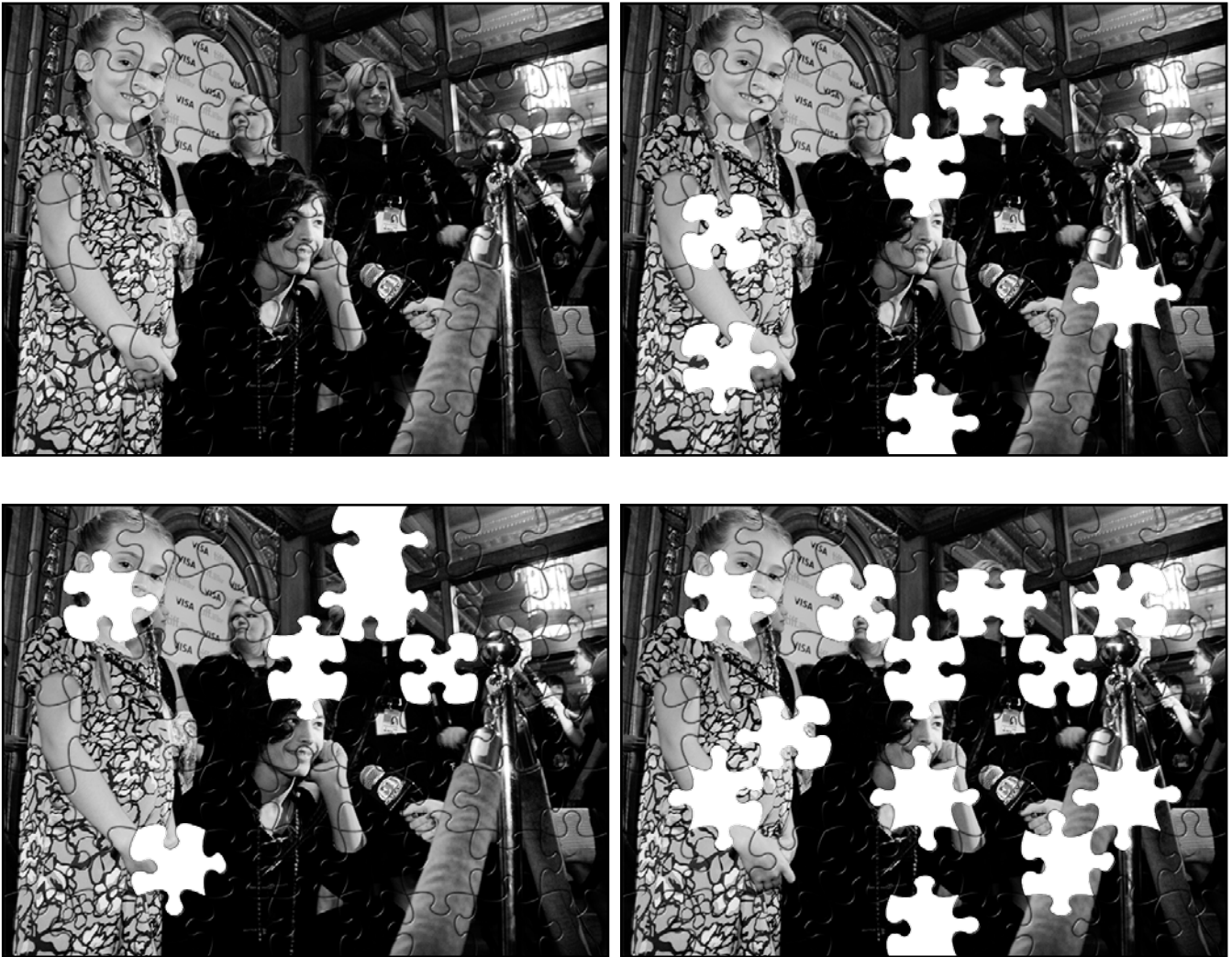


## 5x7inches templates (overlays)





800x600px templates (overlays)



600x840 templates (overlays)





## 640px480 templates (overlays)

