

Exploring Creation with Biology, 3rd Edition – Errata File

This file contains the corrections for the 1st (March 2020) and 2nd (July 2020) Printings, of the **Student Notebook**. The printing for the Textbook and Solutions and Tests Manual may not be the same as the Student Notebook. Corrections for the Textbook and Solutions and Tests Manual are in separate files. (Updated 8/19/2022)

Clarification:

Page 489 – In the list of materials for EXP 13.1, after Prepared slide: sponge, add "- Grantia spicules"

Corrections:

Page 13 – Week 1, Day 1 – Change to: Read pp. vii-x, 1-11. (vs. 1-9) – Students need to read the section titled The Limitations of Science before they can answer OYO 1.1.

Page 13 – Week 1, Day 2 – Change to: Read pp. 11-15 (vs. 10-15)

Page 13 – Week 8, Day 3 should be: Read pp. 160-166 (not 150-166).

Page 14 – Week 12, Day 2 should be: Read pp. 220-225 (not 210-225).

Page 14 – Week 19, Day 1 should be: Read pp. 362-368 (not 356-361).

Page 14 – Week 21, Day 5: Add Experiment 10.5 underneath Experiment 10.4.

Page 25 – OYO 1.2 – change the last word “fact” to “law.”

Page 28 – Term h. should be Scientific theory

Page 75 – In the “Organism” column, Mouse should be in between Beetle and Frog to correspond to the Solutions Manual page 21.

Page 76 – For clarity, add the word “adjacent” to questions 5a. and 5b. so they read: ...which two adjacent trophic levels...

Page 142 – Add the following after the question for #23:

Note that the meiosis column shows meiosis I for the first 4 images and telophase/cytokinesis II for the last image. Also note that there is a brief moment in the cell cycle where there is double the diploid number of chromosomes. You can note that brief moment as 4n.

Exploring Creation with Biology, 3rd Edition – Errata File – Page 2

Page 164 – In question #9, remove the shading in the circle marked 2. It should be white. This Figure corresponds to and is correct in the textbook on page 305.

Page 228 – Module 10 Study Guide #15 – Change microscopic to macroscopic

Page 286 – The terms should be labeled p. through z (vs. o. through y.)

Page 334 – #17 In the fish diagram, the line for "a." should point to Blue blood. See attached diagram at the end of this file.

Page 365 – Experiment 1.1 – In the Materials list, remove Methylene blue stain. On the microscope image, add the label “arm” to the white, bent handle (between bodytube and coarse focus).

Page 370 – On Figure 1.18 add a line for the microscope part “arm” to the right of the bent part of the white handle.

Page 409 – Procedure 3, b, ii – add ‘yeast’ after ½ teaspoon

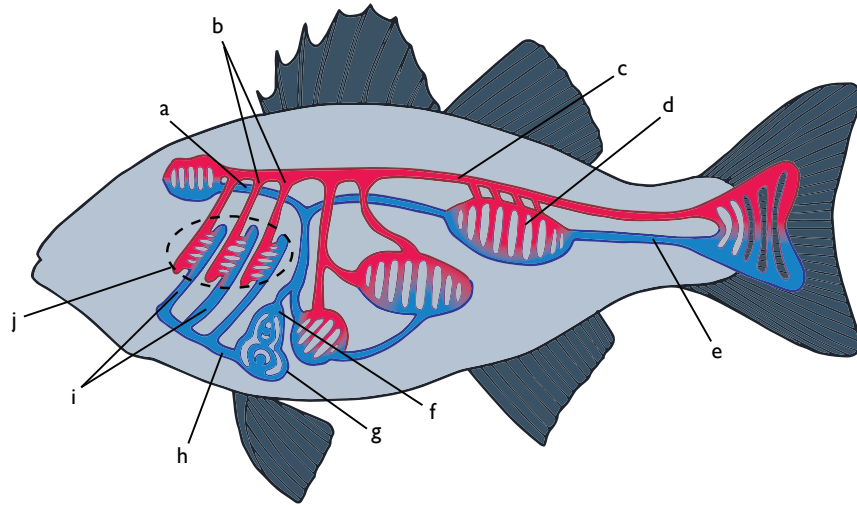
Page 410 – Procedure 3, c, ii – add ‘yeast’ after ½ teaspoon

Page 426 – In the Note at the top of Experiment 7.2, change the word ‘dominate’ to ‘dominant’ at the end of lines 2, 3, and 4.

Page 435 – Line 10a - change the word 'lack' to 'have'.

17

Identify the structures in the figure below and indicate which are veins, which are arteries, and which are neither.



STRUCTURE		STRUCTURE	
a.		f.	
b.		g.	
c.		h.	
d.		i.	
e.		j.	