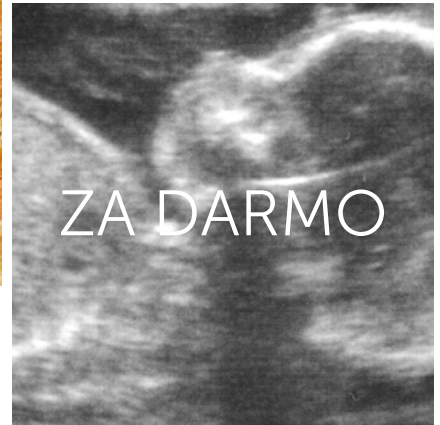
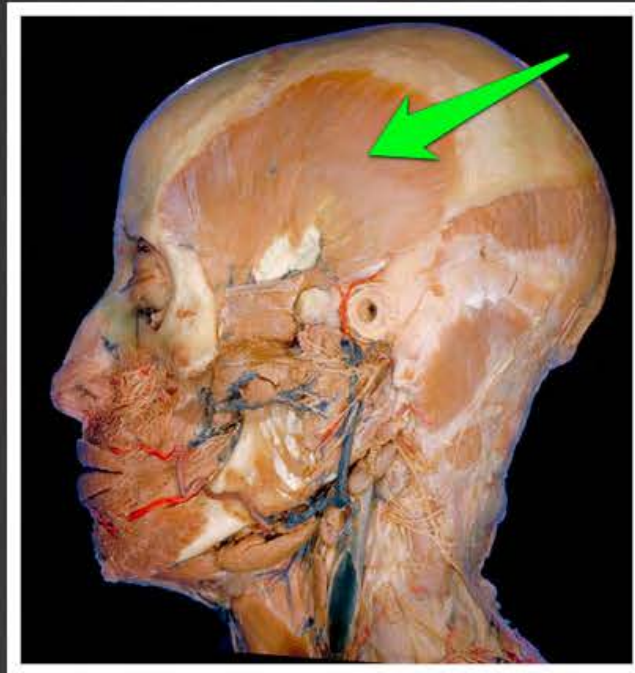




Głowoszyjne szpilki.



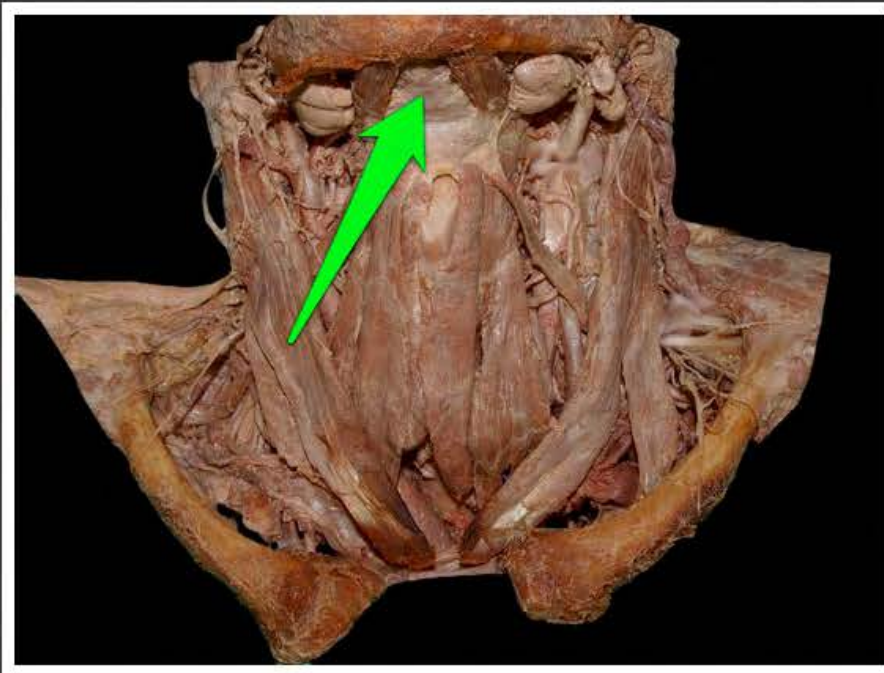
www.wuzetki.pl



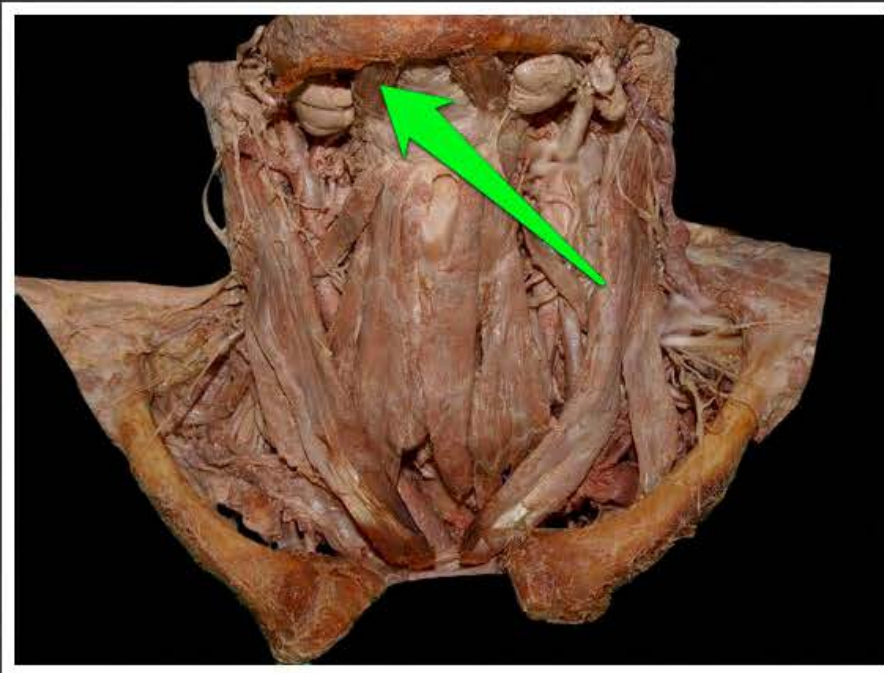
mięsień skroniowy (*musculus temporalis*)



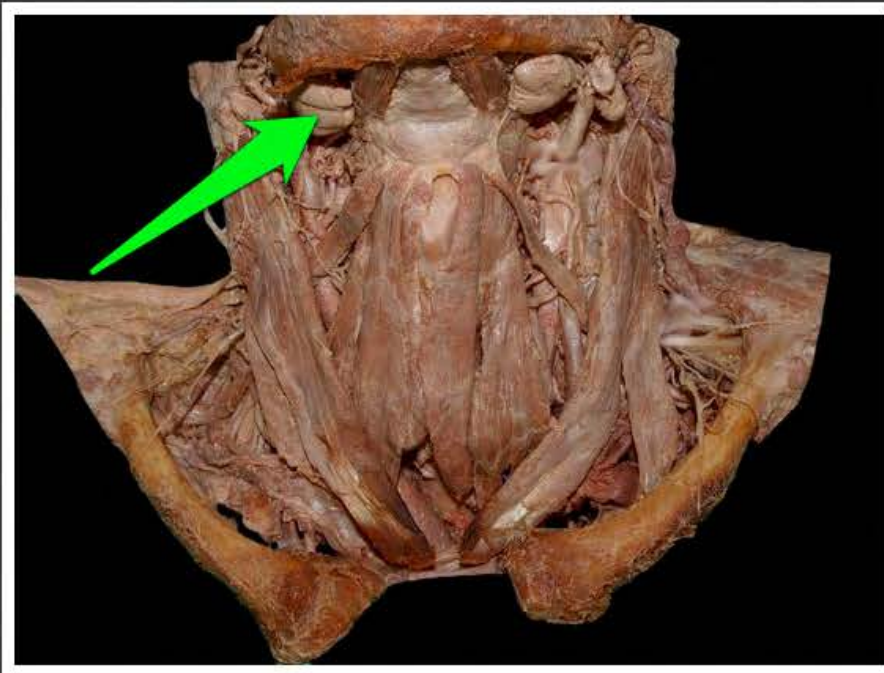
mięsień szeroki szyi (*platysma*)



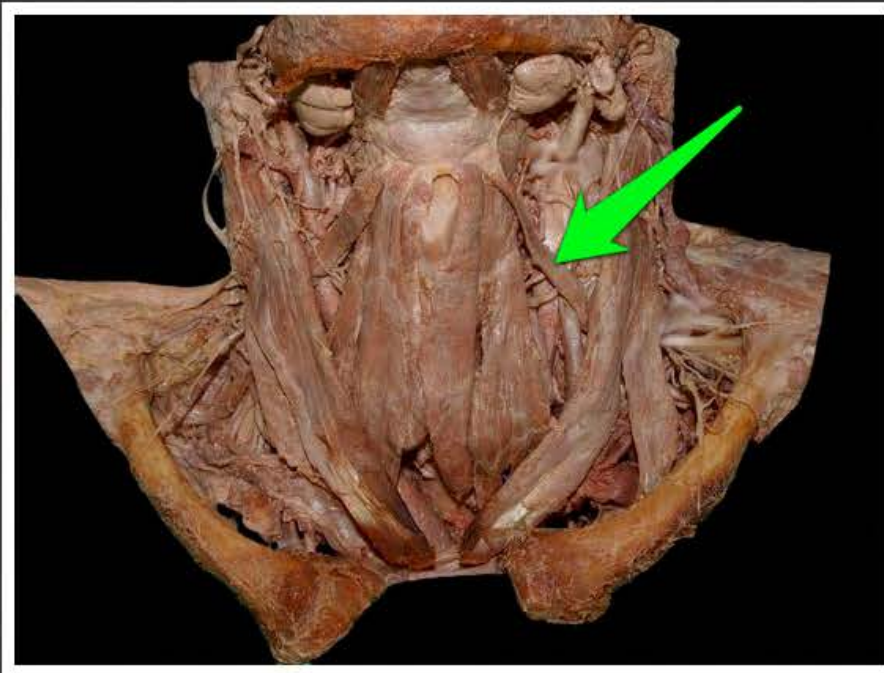
mięsień żuchwowo-gnykowy
(*musculus mylohyoideus*)



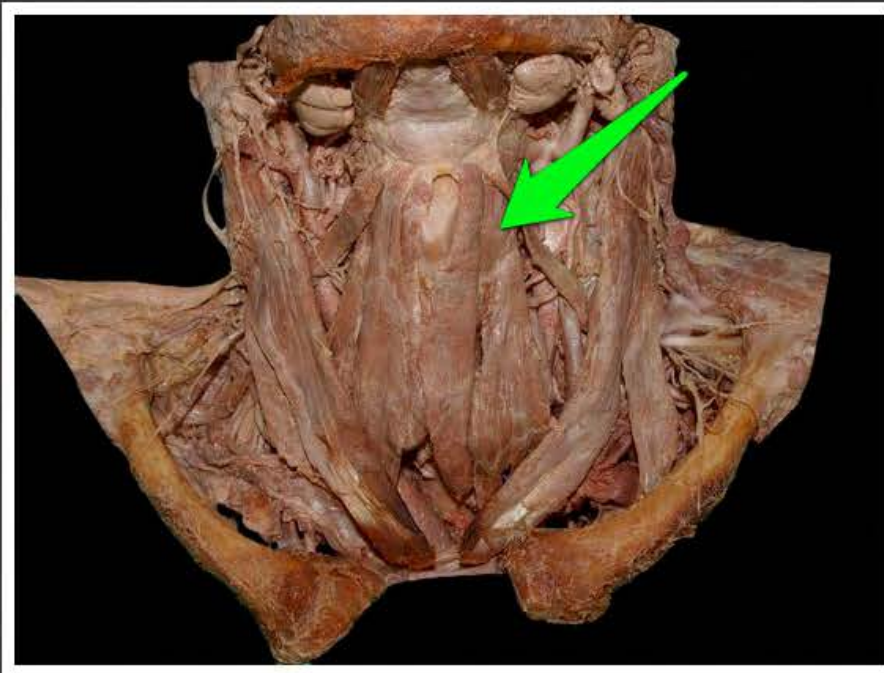
brzusiec przedni mięśnia
dwubrzuścowego (*venter anterior
muscui digastrici*)



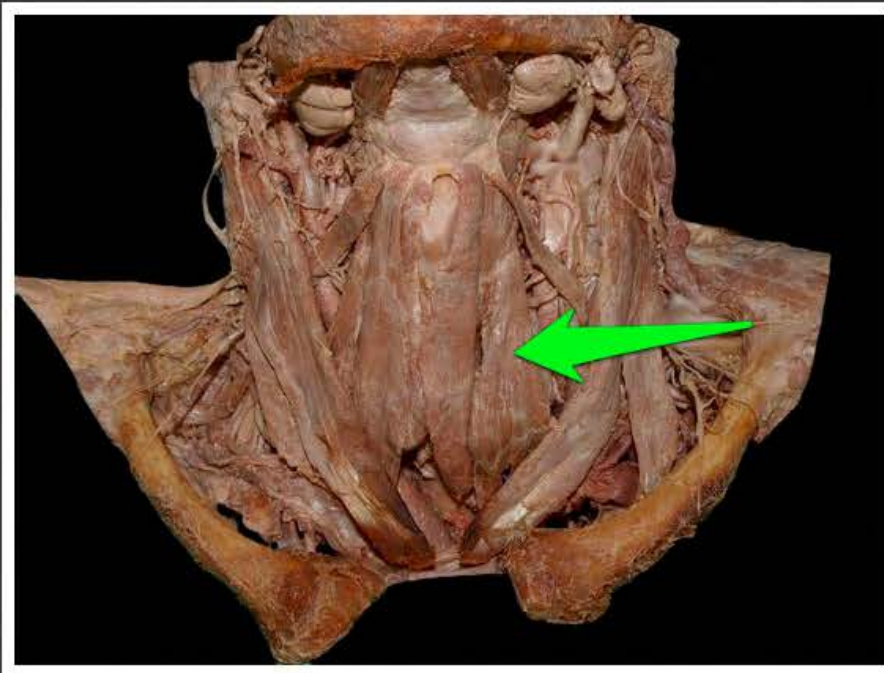
ślinianka podżuchwowa (*glandula submandibularis*)



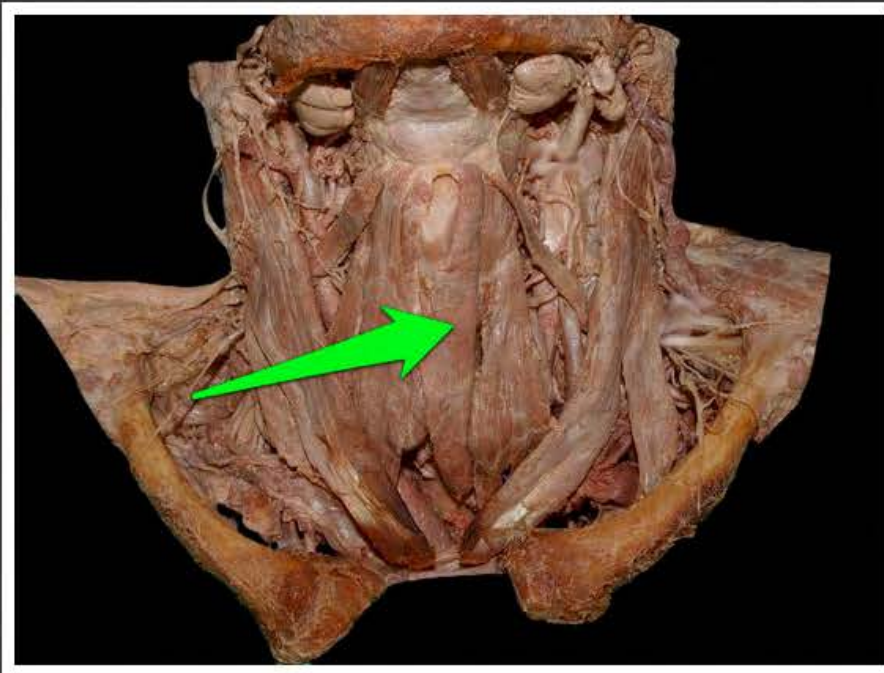
brzusiec górny mięśnia łopatkowo-
gnykowego (*musculus*
omohyoideus, venter superior)



mięsień tarczowo-gnykowy
(*musculus thyrohyoideus*)



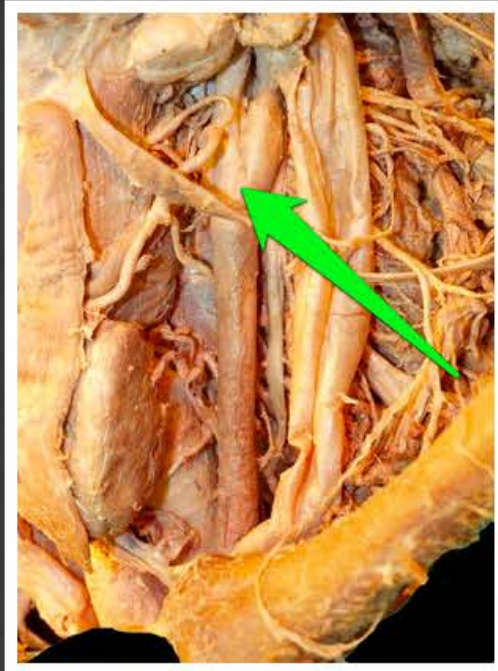
mięsień mostkowo-tarczowy
(*musculus sternothyroideus*)



mięsień mostkowo-gnykowy
(*musculus sternohyoideus*)



tętnica szyjna wspólna lewa (*arteria carotis communis sinistra*)



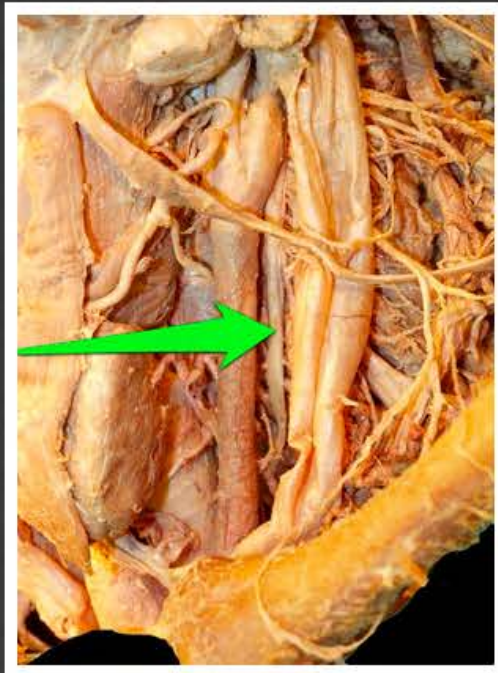
zatoka szyjna (*sinus caroticus*)



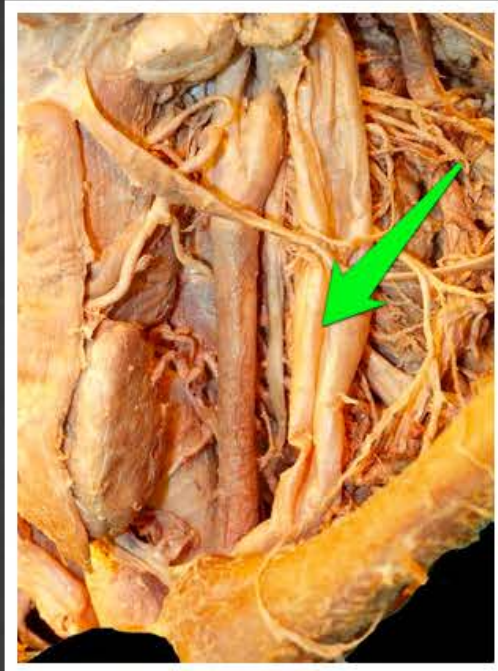
tętnica szyjna wewnętrzna (*arteria carotis interna*)



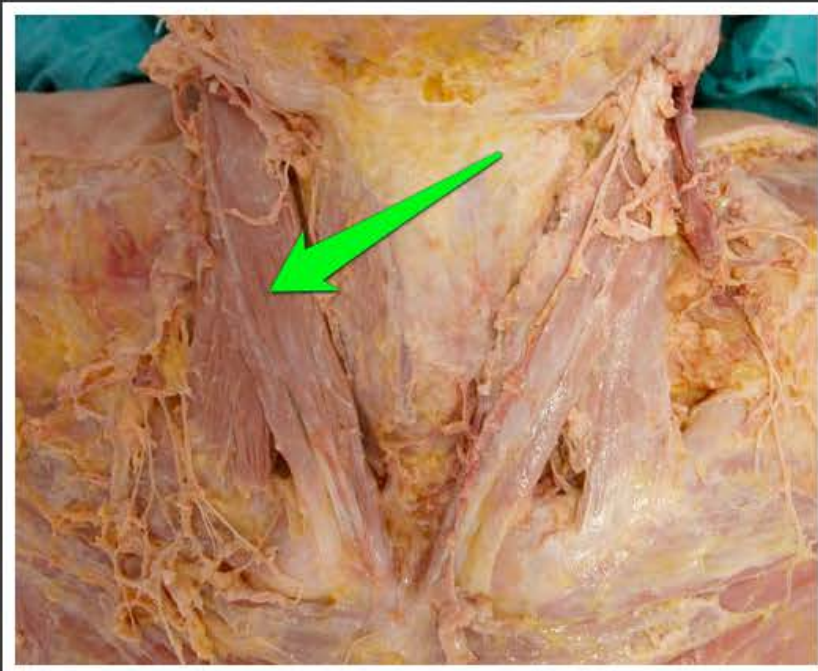
tętnica szyjna zewnętrzna (*arteria carotis externa*)



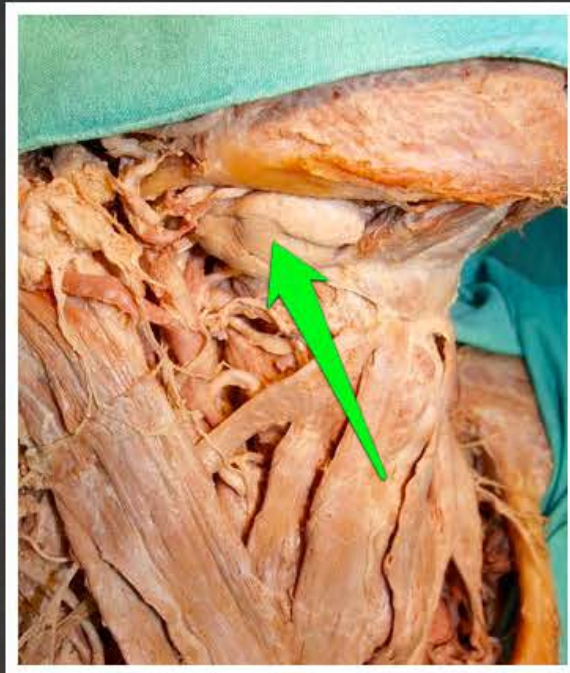
nerw błędny (*nervus vagus*)



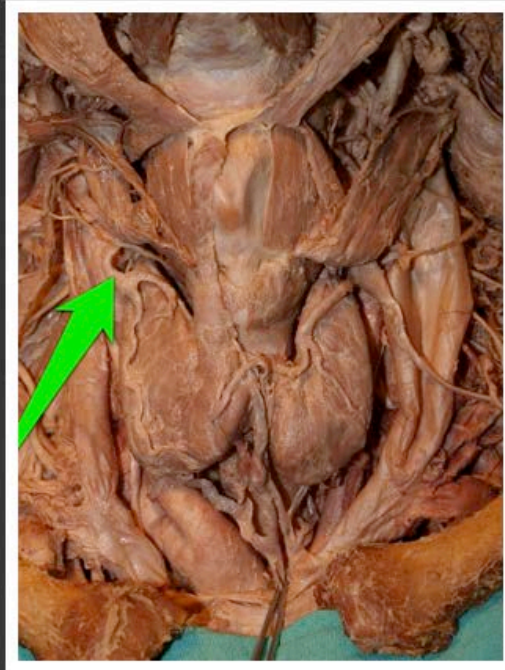
żyła szyjna wewnętrzna (*vena jugularis interna*)



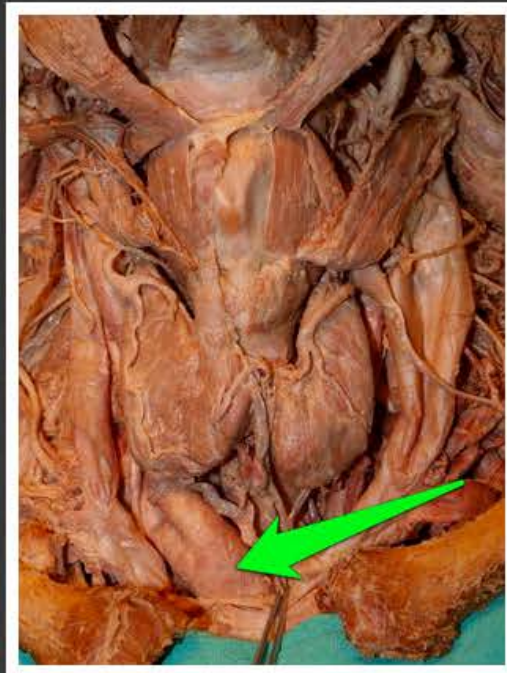
mięsień mostkowo-obojczykowo-
sutkowy (*musculus*
sternocleidomastoideus)



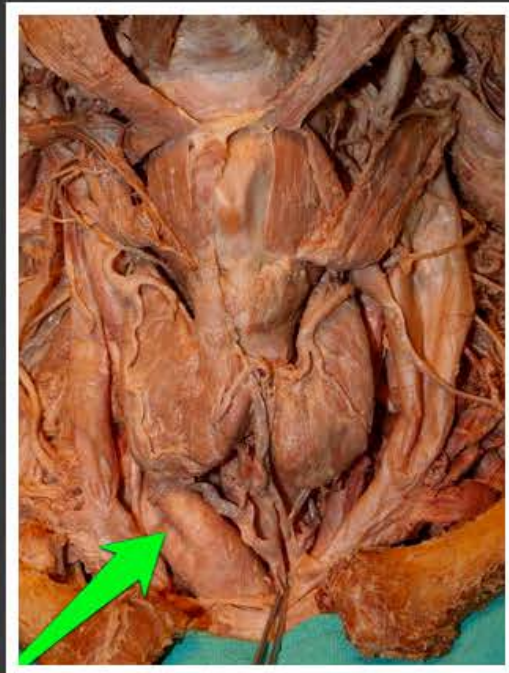
ślinianka podżuchwowa (*glandula submandibularis*)



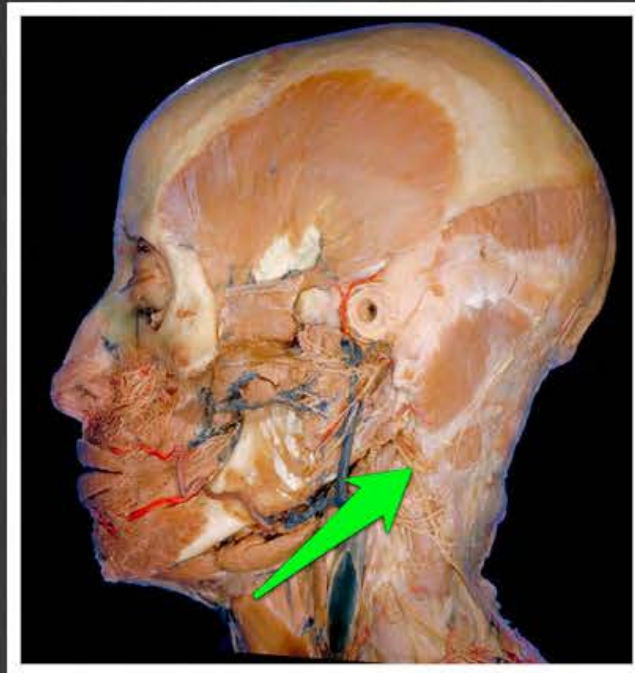
tętnica tarczowa górna (*arteria thyroidea superior*)



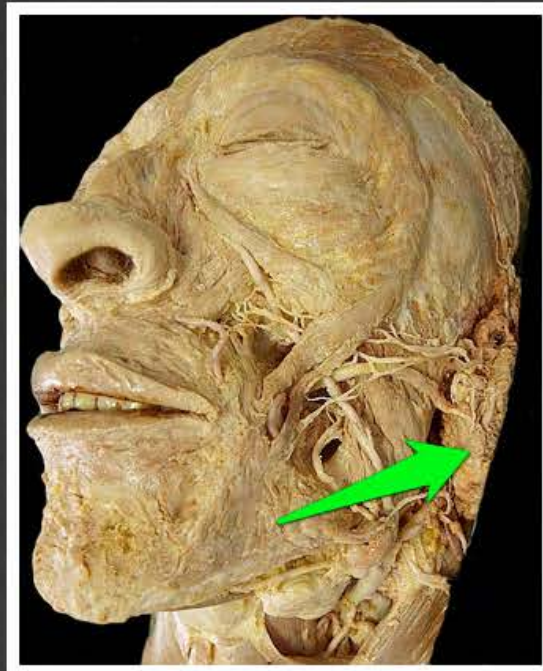
pień ramiennieo-głowowy (*truncus
brachiocephalicus*)



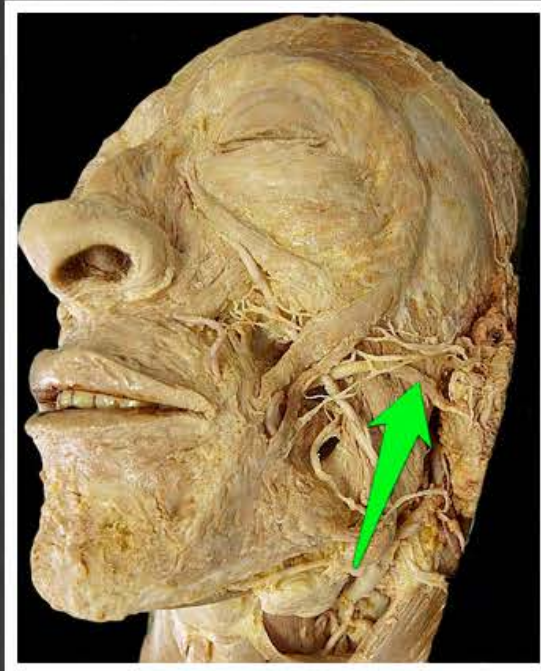
tętnica podobojczykowa prawa
(*arteria subclavia dextra*)



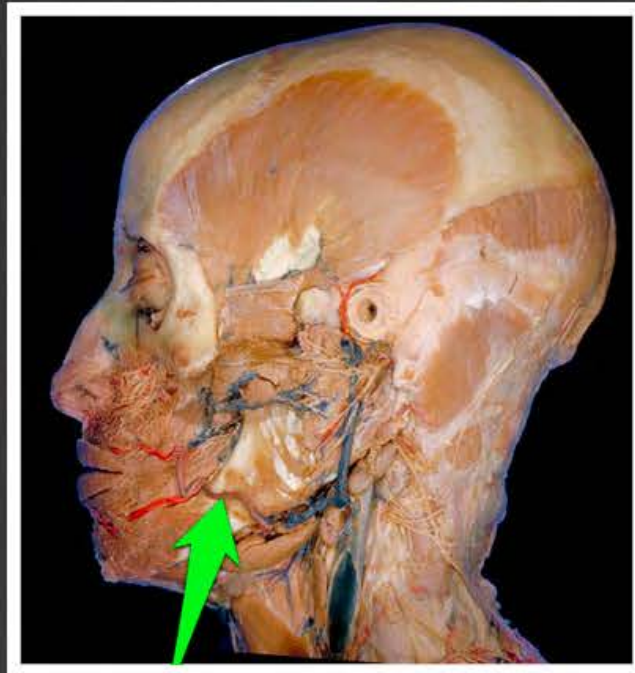
gałąź zewnętrzna nerwu
dodatkowego (*ramus externus nervi
accessorii*)



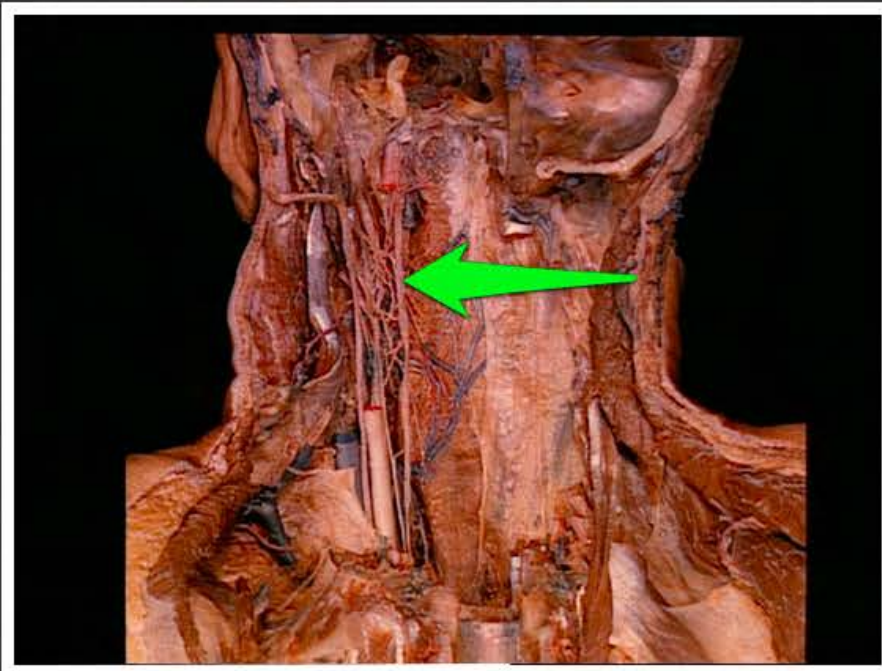
ślinianka przyuszną (*glandula parotis*)



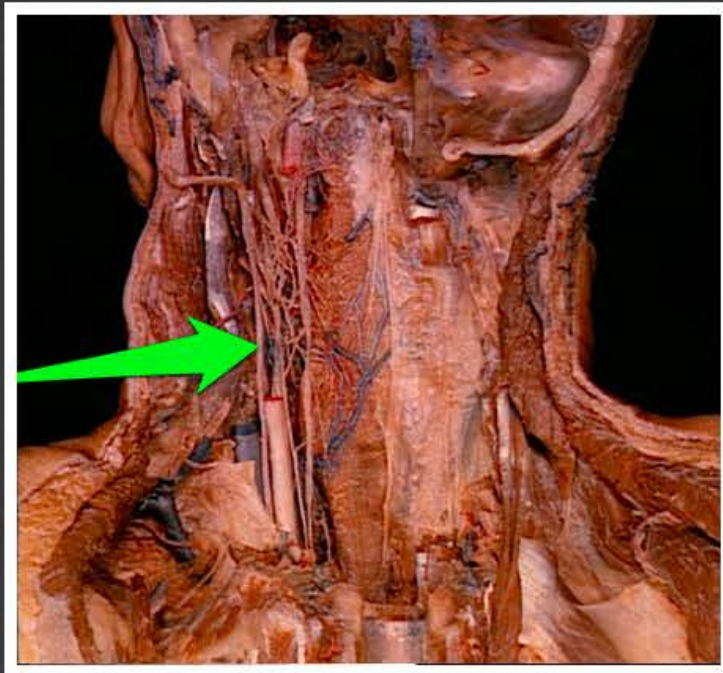
przewód ślinianki przyusznej (*ductus parotideus*)



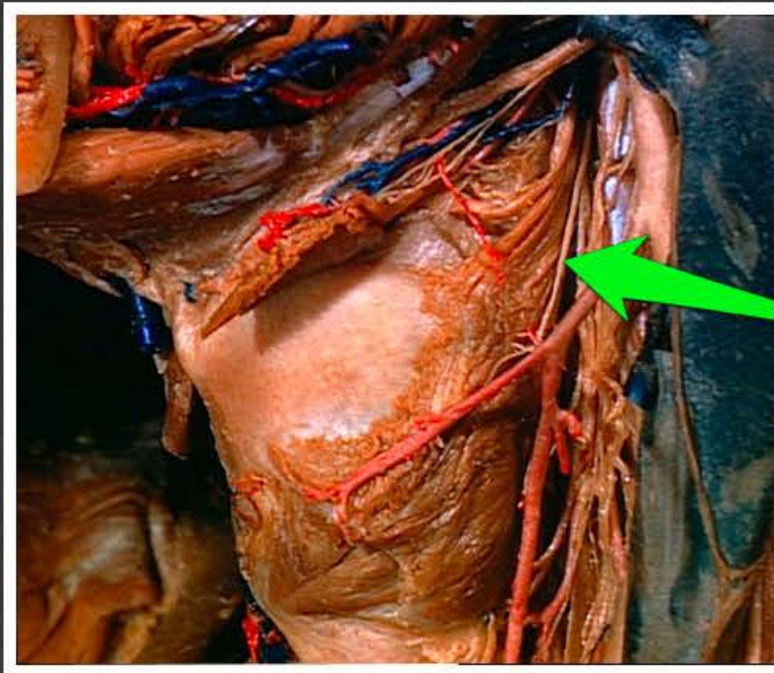
tętnica twarzowa (*arteria facialis*)



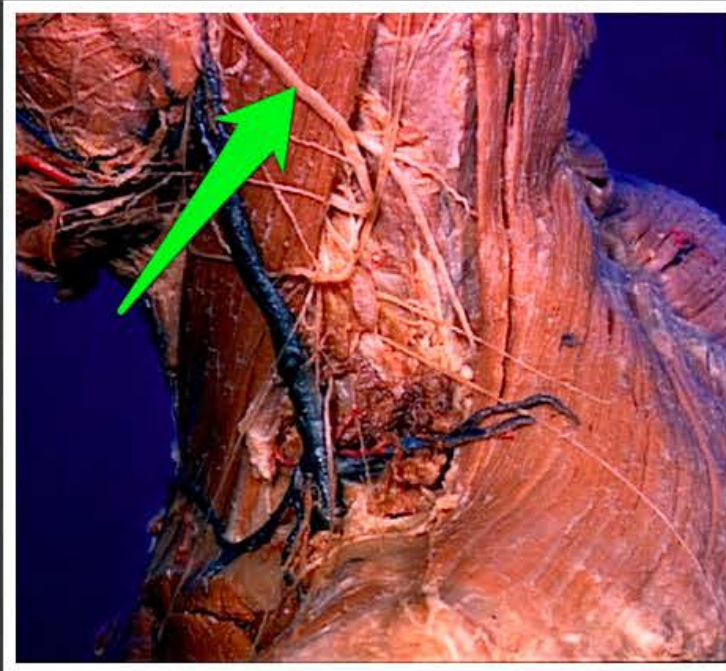
pień sympatyczny (*truncus
sympathicus*)



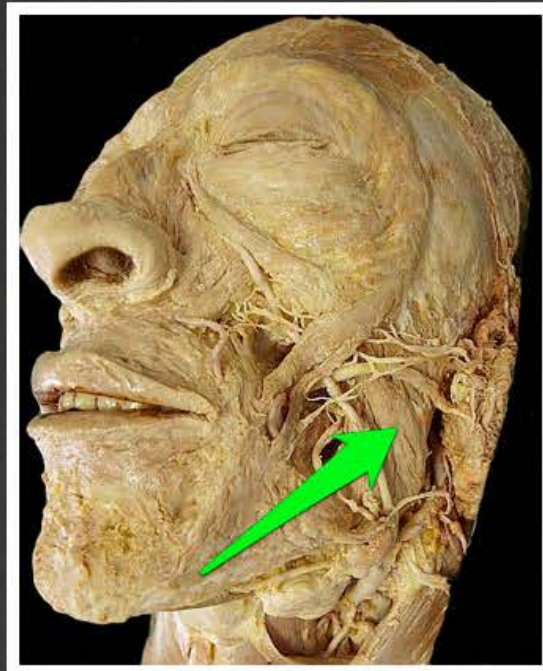
nerw błędny (*nervus vagus*)



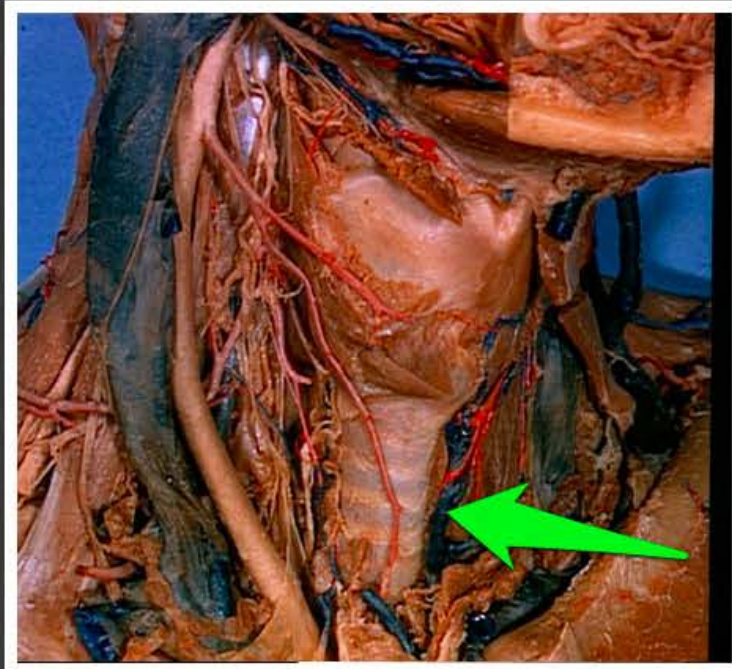
gałąź zewnętrzna nerwu
krtaniowego górnego (*ramus
externus nervi laryngei superioris*)



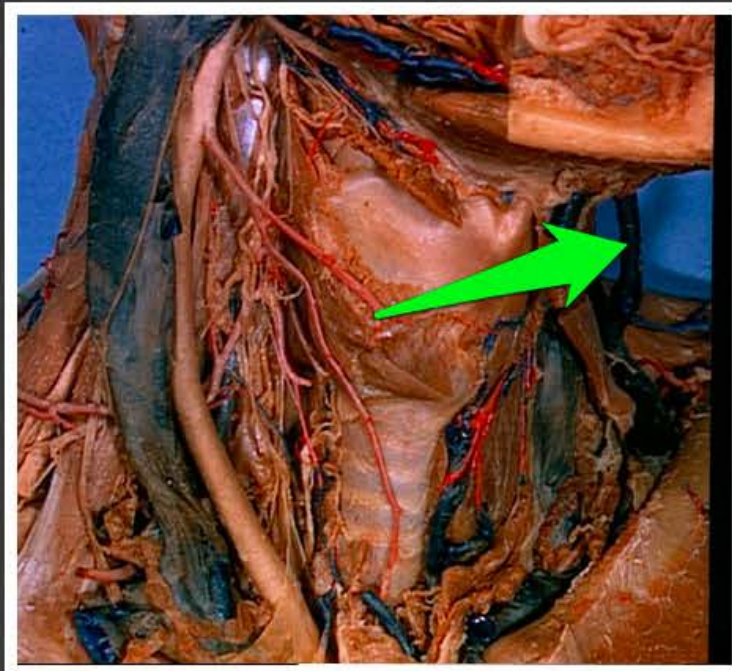
nerw uszny wielki (*nervus auricularis magnus*)



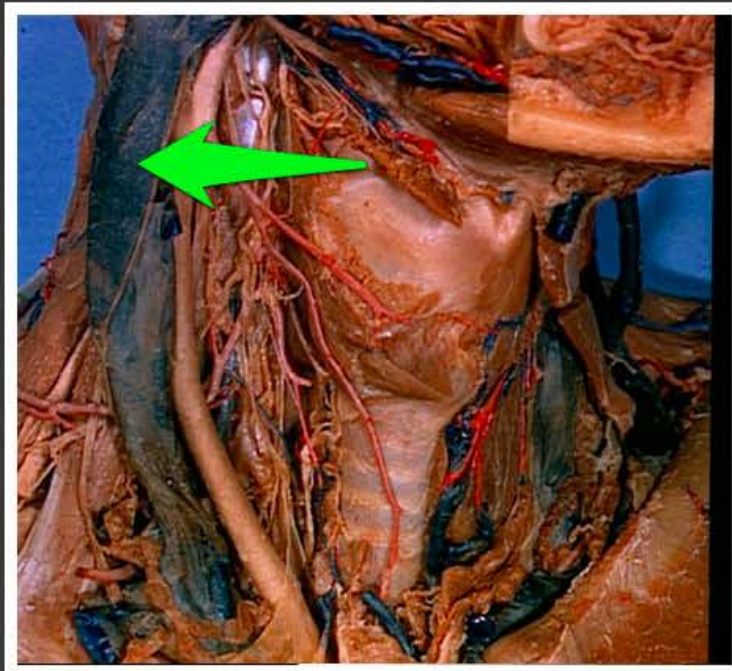
mięsień żwacz (*musculus masseter*)



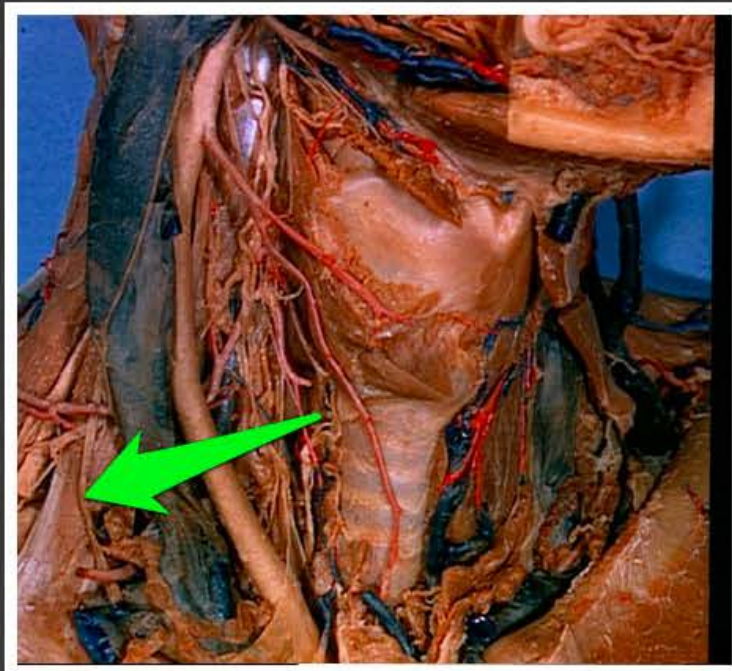
żyła szyjna przednia (*vena jugularis anterior*)



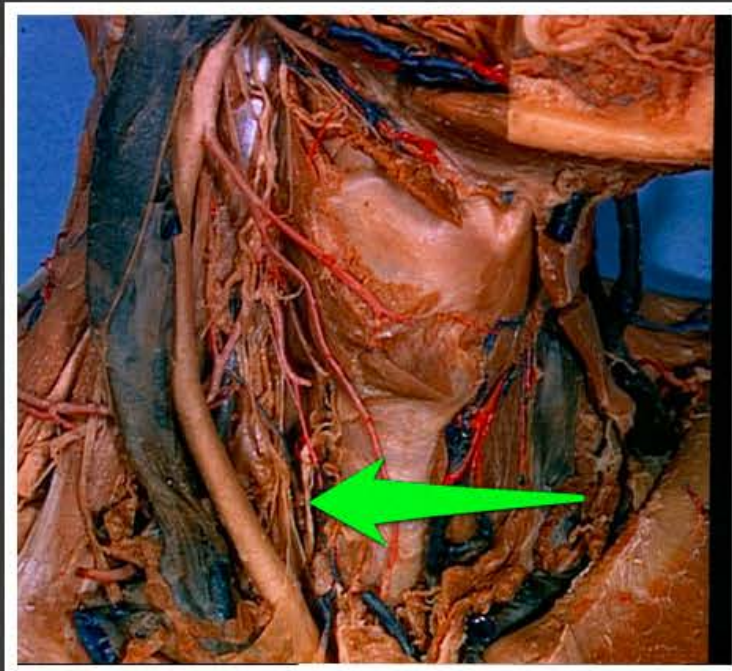
żyła szyjna zewnętrzna (*vena jugularis externa*)



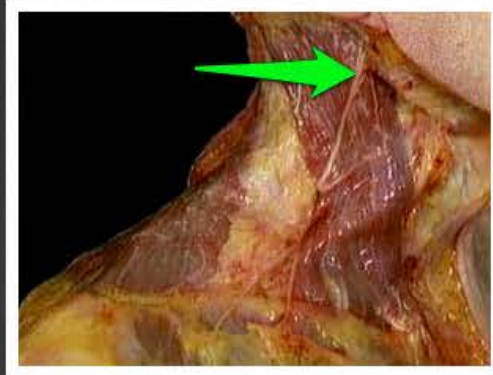
żyła szyjna wewnętrzna (*vena jugularis interna*)



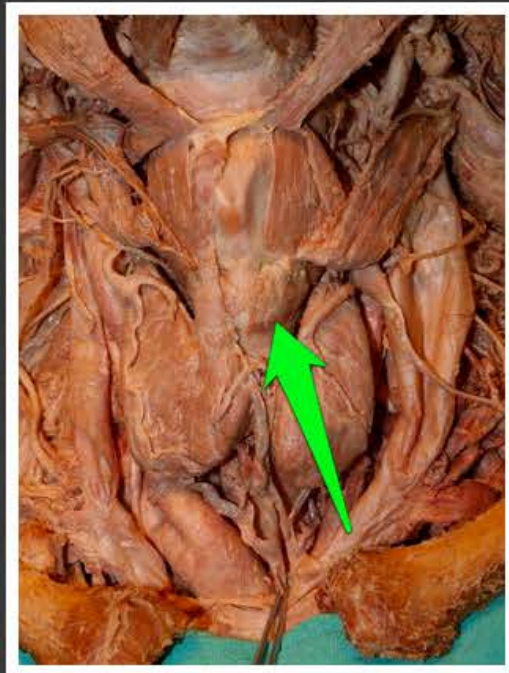
nerw przeponowy (*nervus phrenicus*)



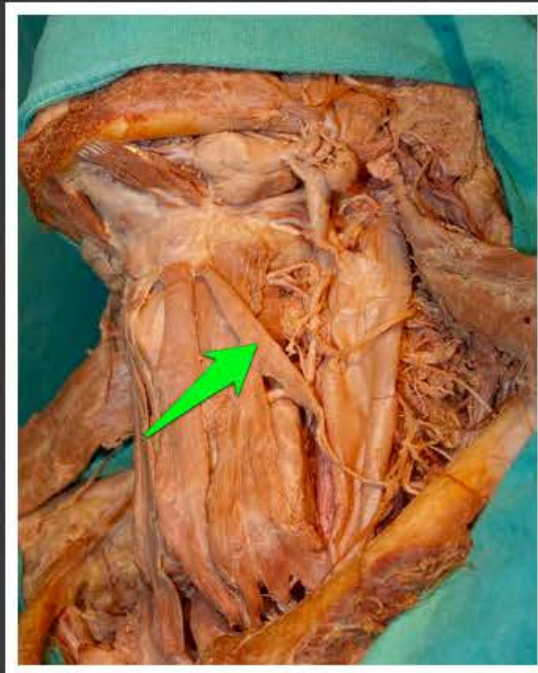
nerw krtaniowy wsteczny prawy
(*nervus laryngeus recurrens dexter*)



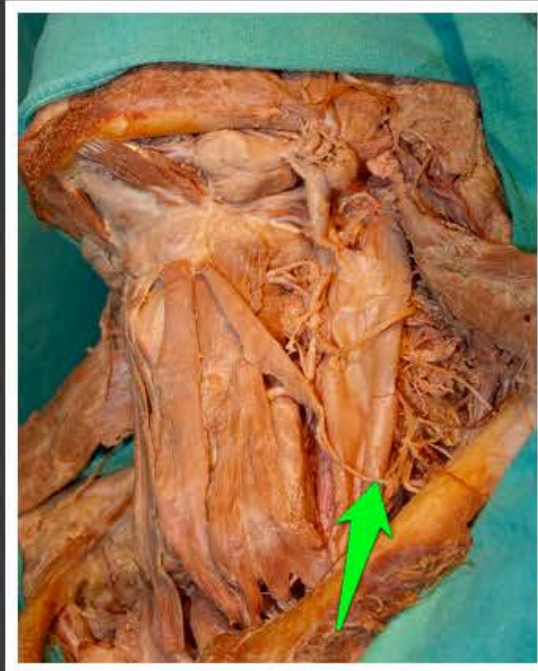
zwój szyjny górny (*ganglion
cervicale superius*)



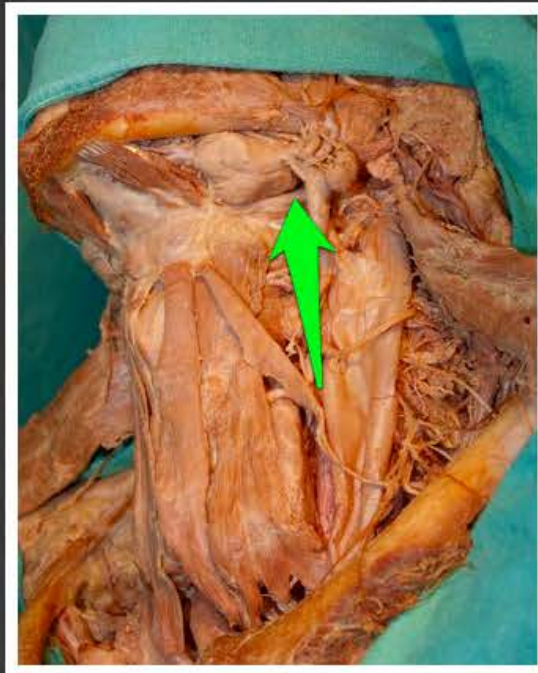
mięsień pierścienno-tarczowy
(*musculus cricothyroideus*)



brzusiec górny mięśnia łopatkowo-
gnykowego (*venter superior muscui
omohyoidei*)



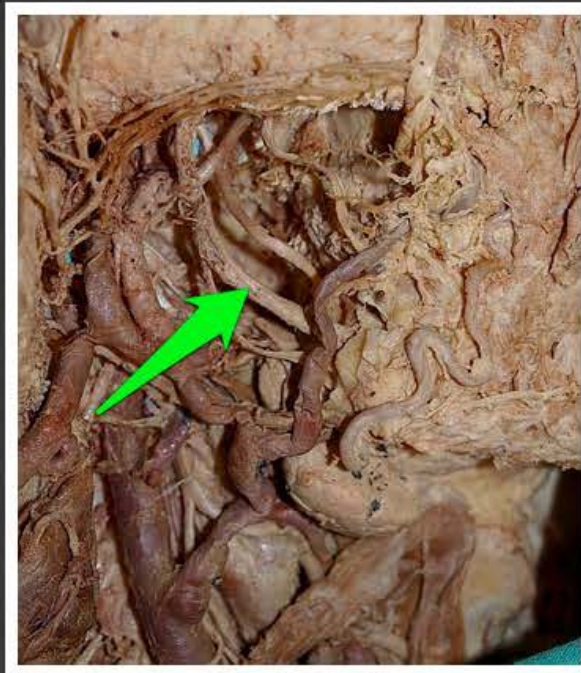
brzusiec dolny mięśnia łopatkowo-
gnykowego (*venter inferior musculi
omohyoidei*)



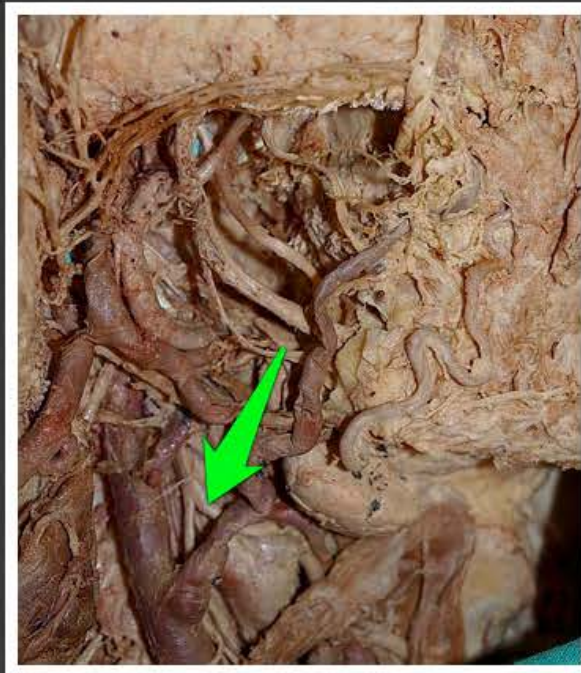
brzusiec tylny mięśnia
dwubrzuścowego (*venter posterior
musculi digastrici*)



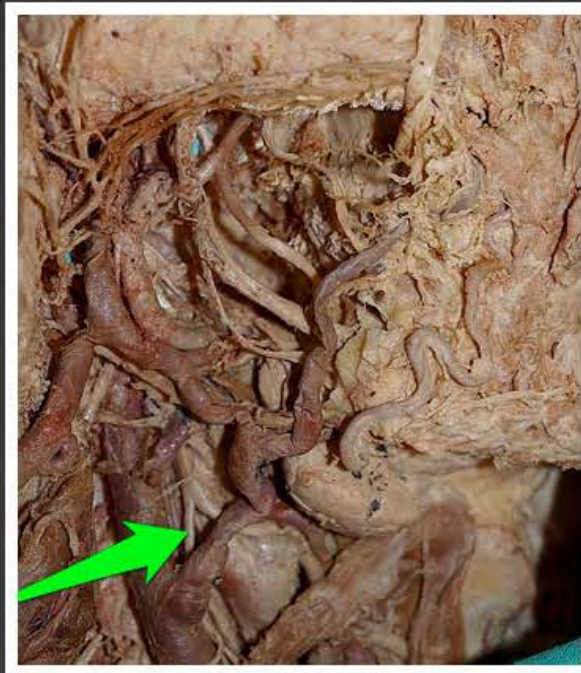
nerw językowy (*nervus lingualis*)



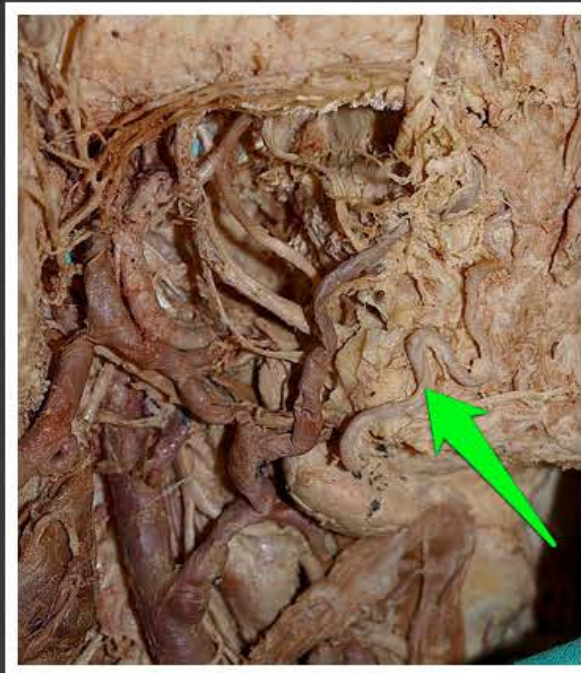
nerw zębodołowy dolny (*nervus alveolaris inferior*)



nerw podjęzykowy (*nervus hypoglossus*)



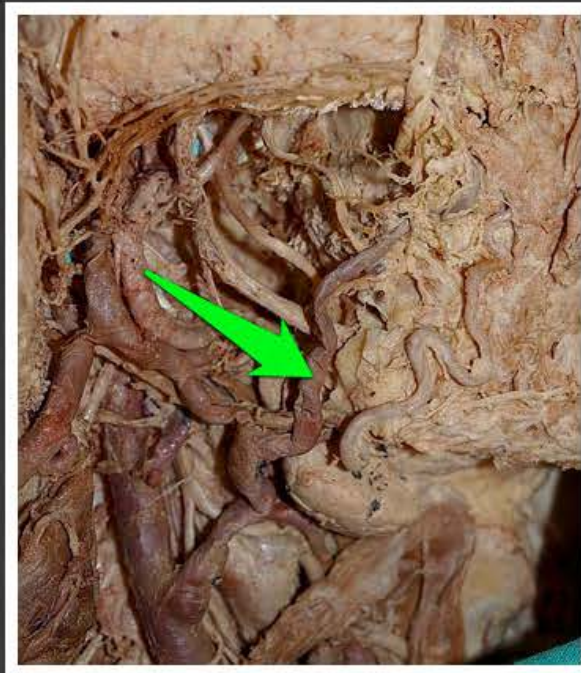
pętla szyjna (*ansa cervicalis*)



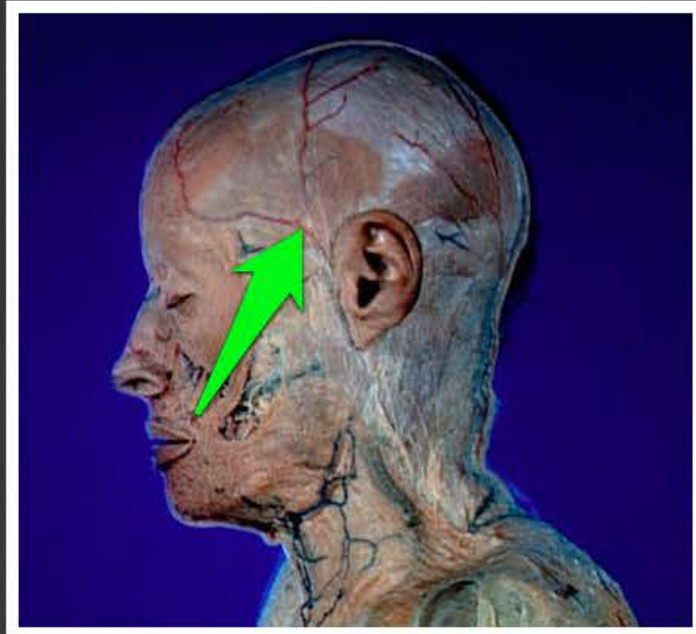
tętnica twarzowa (*arteria facialis*)



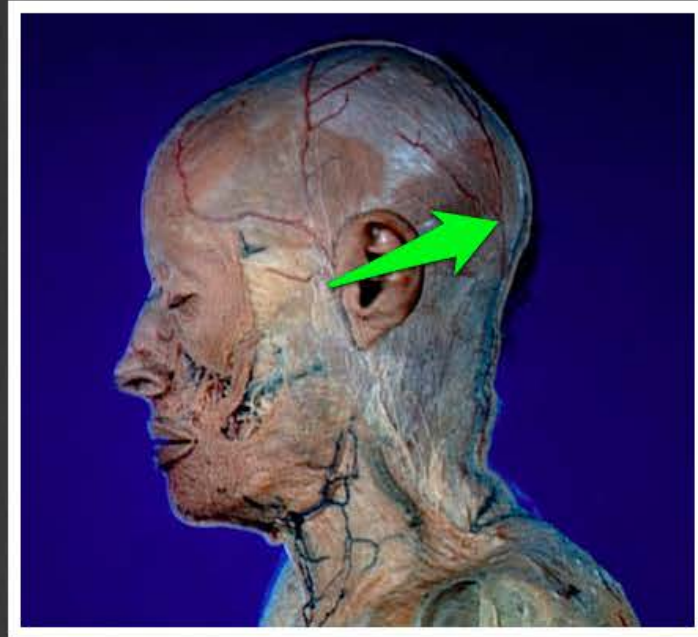
tętnica szczękowa (*arteria maxillaris*)



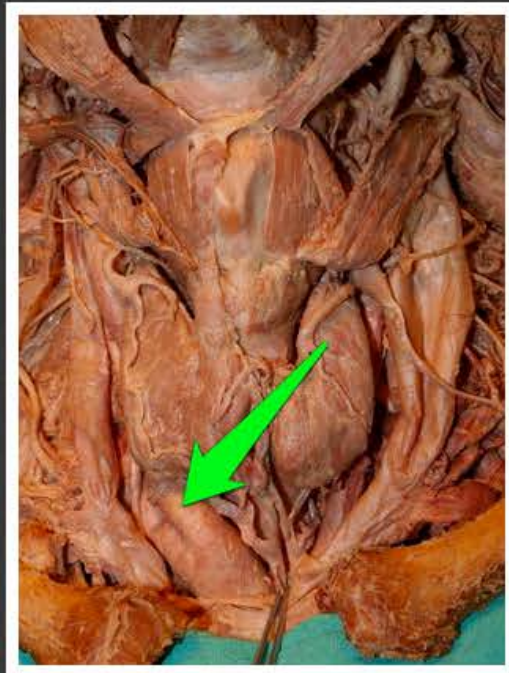
żyła twarzowa (*vena facialis*)



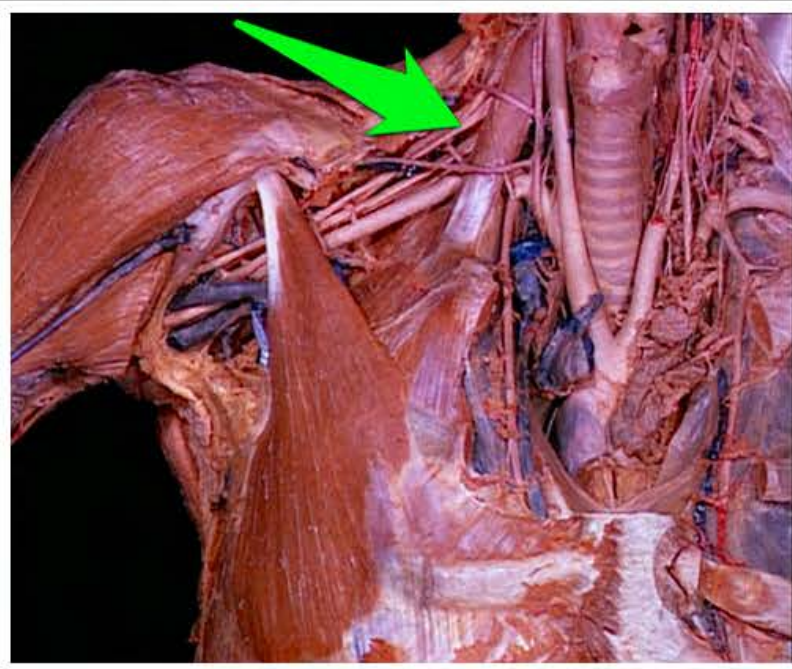
tętnica skroniowa powierzchowna
(*arteria temporalis superficialis*)



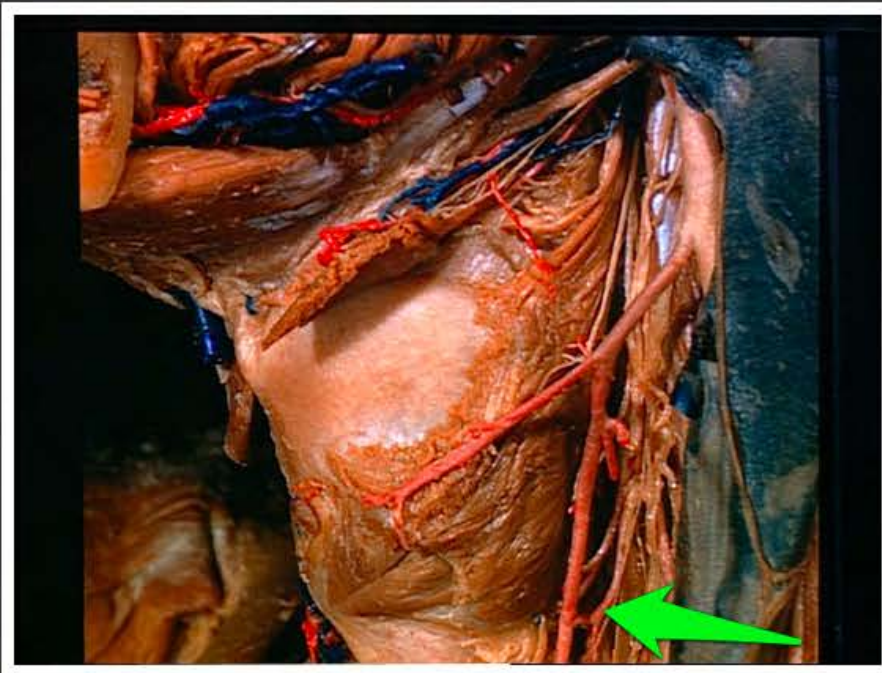
tętnica potyliczna (*arteria occipitalis*)



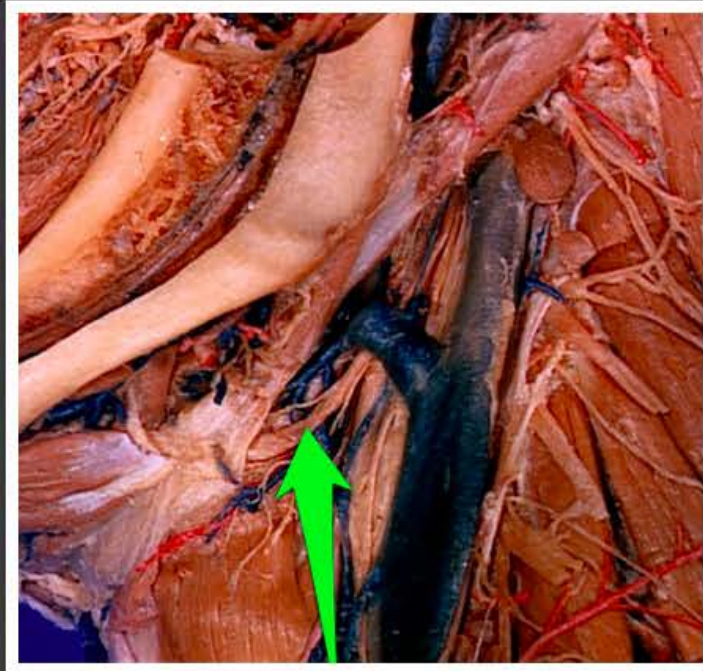
tętnica szyjna wspólna prawa
(*arteria carotica communis dextra*)



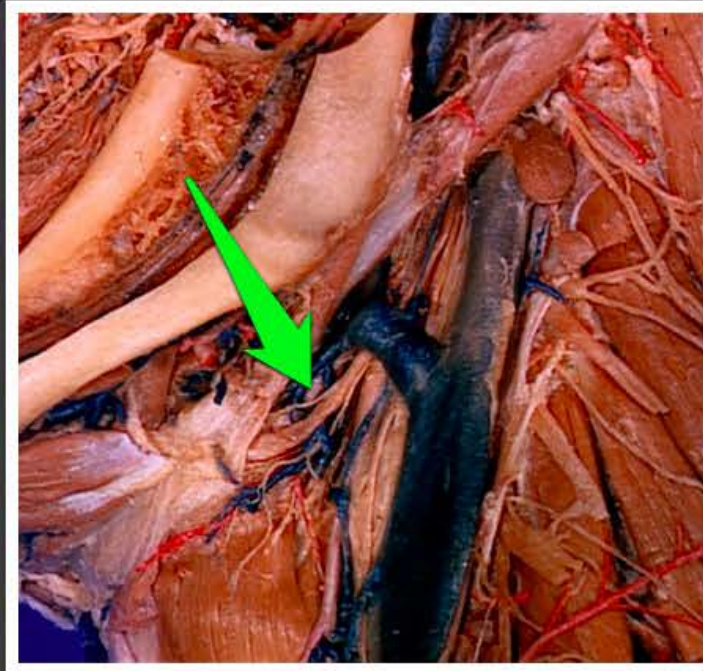
część nadobojczykowa splotu
ramiennego (*pars supraclavicularis*
plexus brachialis)



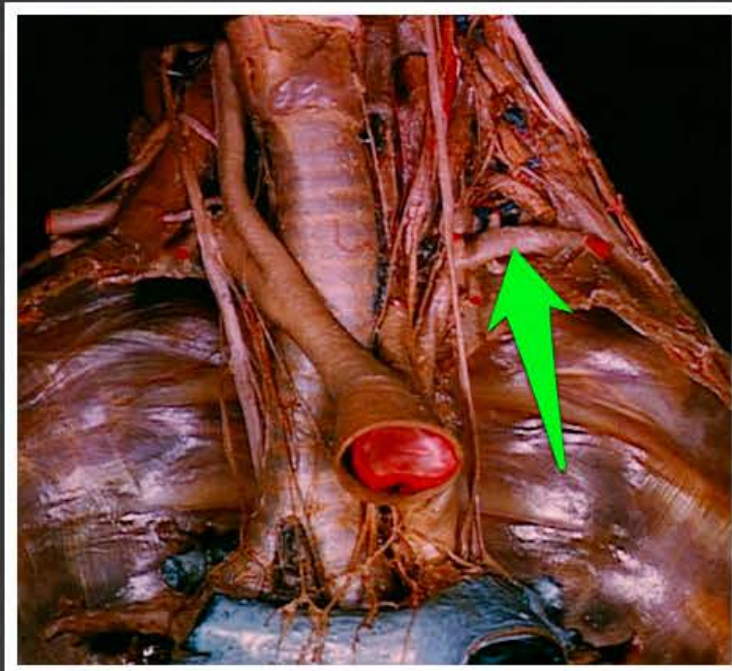
tętnica tarczowa dolna (*arteria thyroidea inferior*)



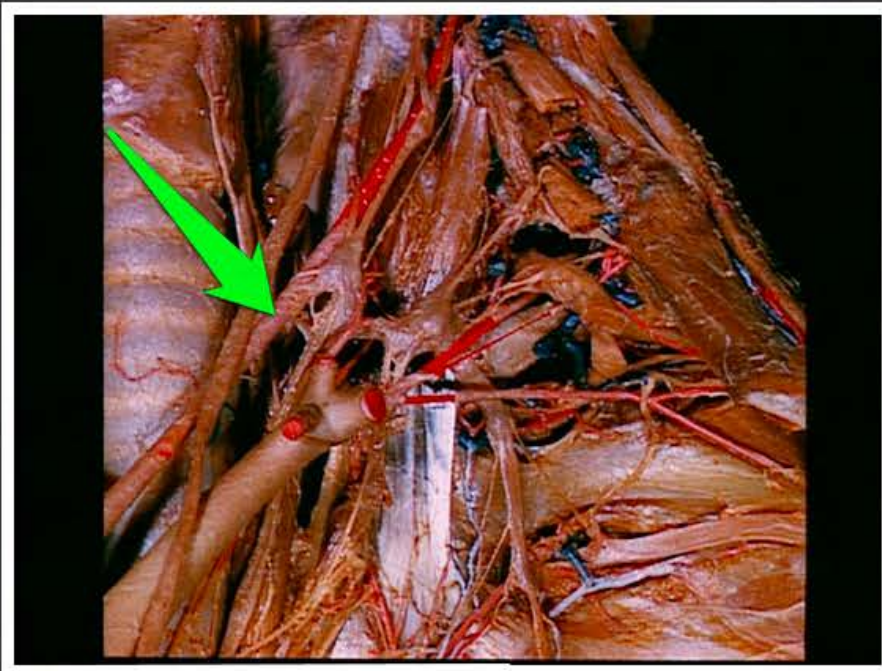
nerw podjęzykowy (*nervus hypoglossus*)



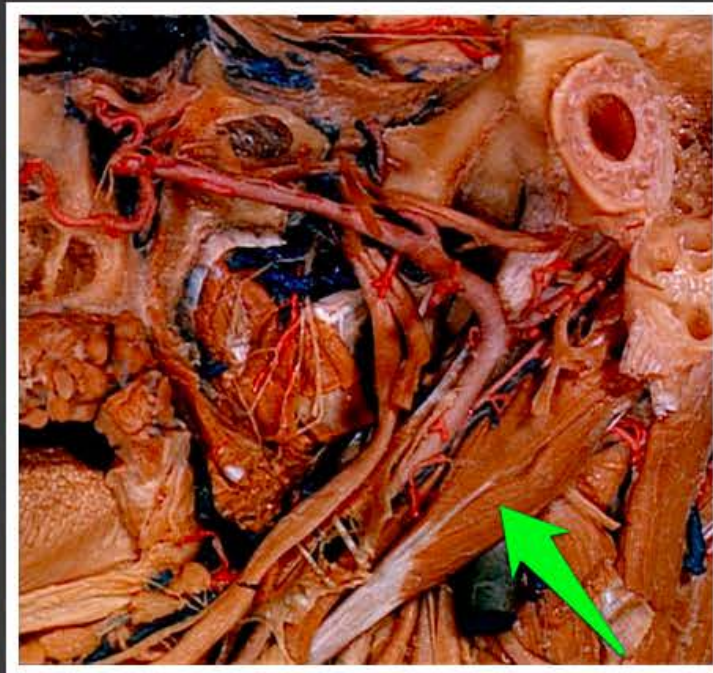
tętnica językowa (*arteria lingualis*)



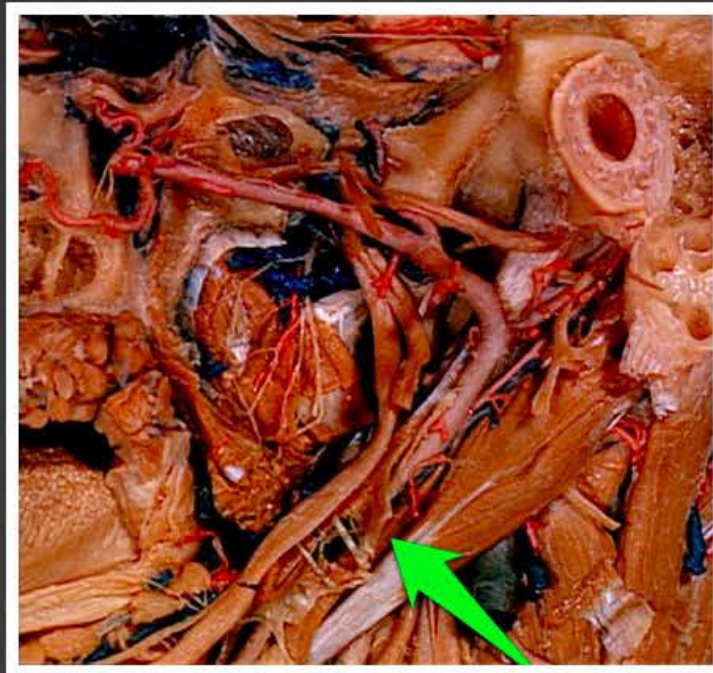
tętnica podobojczykowa lewa
(*arteria subclavia sinistra*)



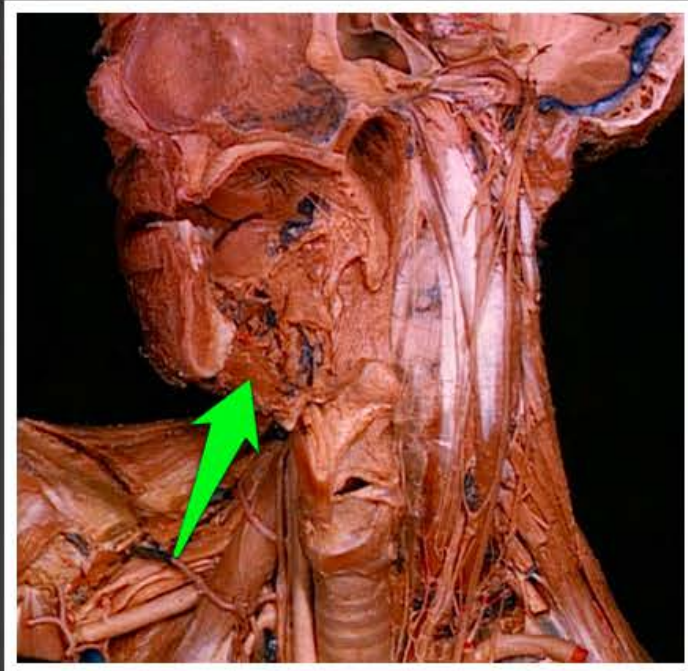
tętnica kręgowa (*arteria vertebralis*)



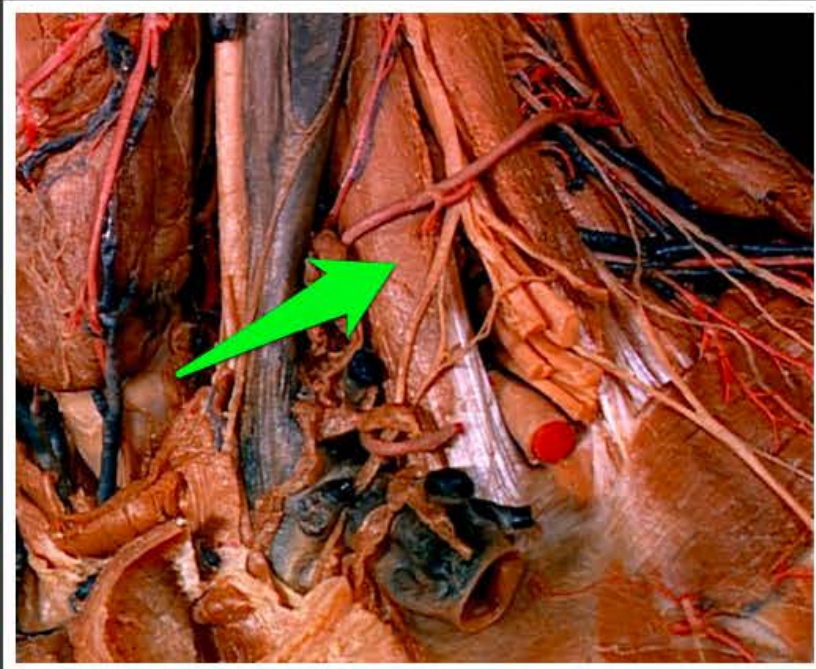
brzusiec tylny mięśnia
dwubrzuścowego (*venter posterior
musculi digastrici*)



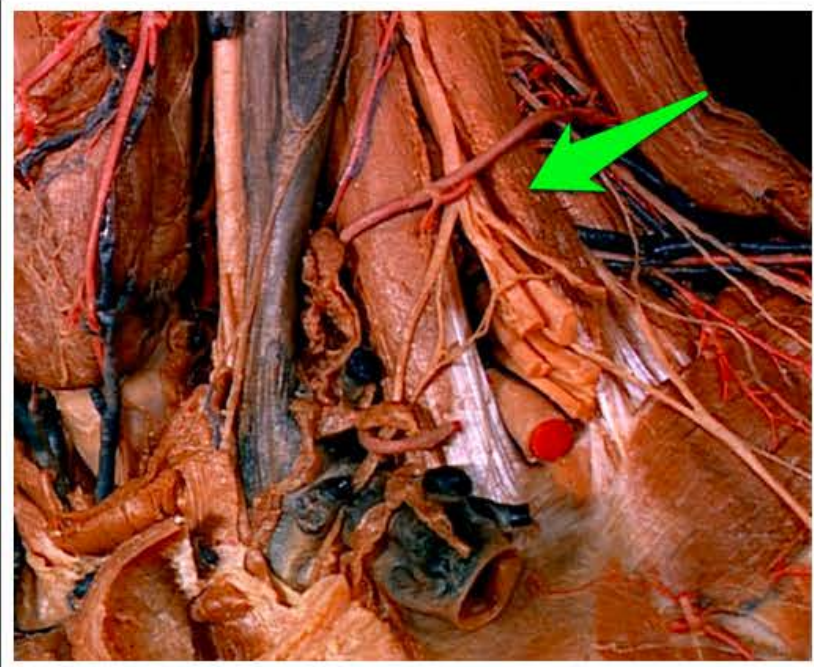
mięsień rylcowo-gnykowy (*musculus stylohyoideus*)



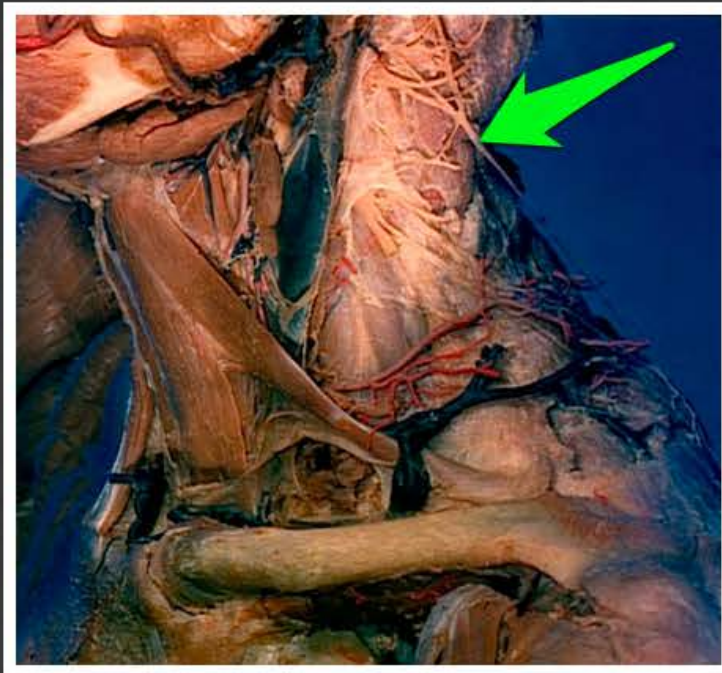
mięsień bródkowo-gnykowy
(*musculus geniohyoideus*)



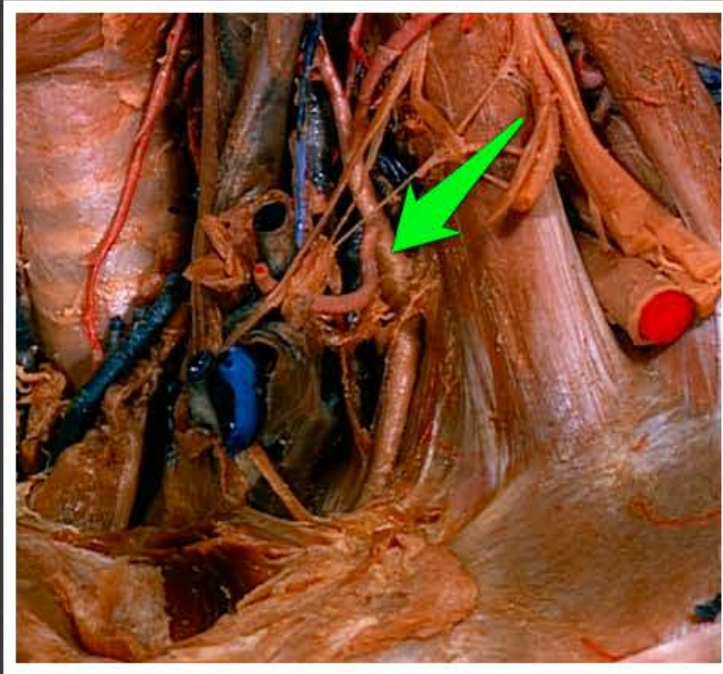
mięsień pochyły przedni (*musculus scalenus anterior*)



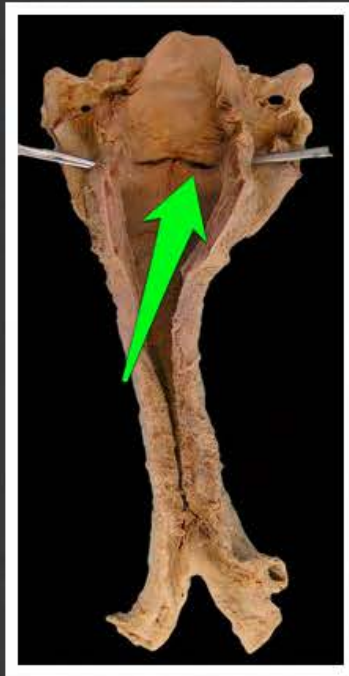
mięsień pochyły środkowy
(*musculus scalenus medius*)



gałąź zewnętrzna nerwu
dodatkowego (*ramus externus nervi
accessorii*)



pień tarczowo-szyjny (*truncus thyrocervicalis*)



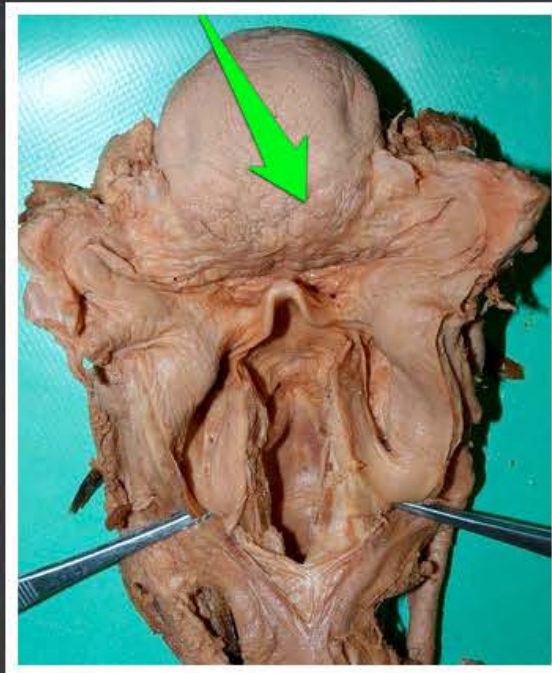
fałd głosowy (*plica vocalis*)



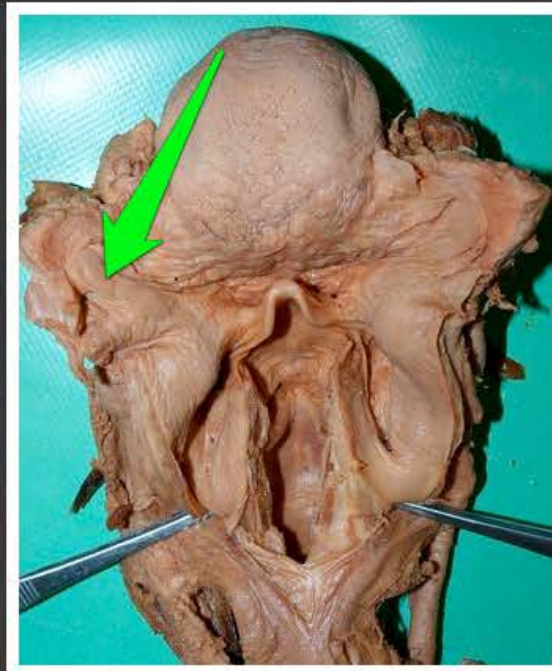
fałd przedsionkowy (*plica vestibularis*)



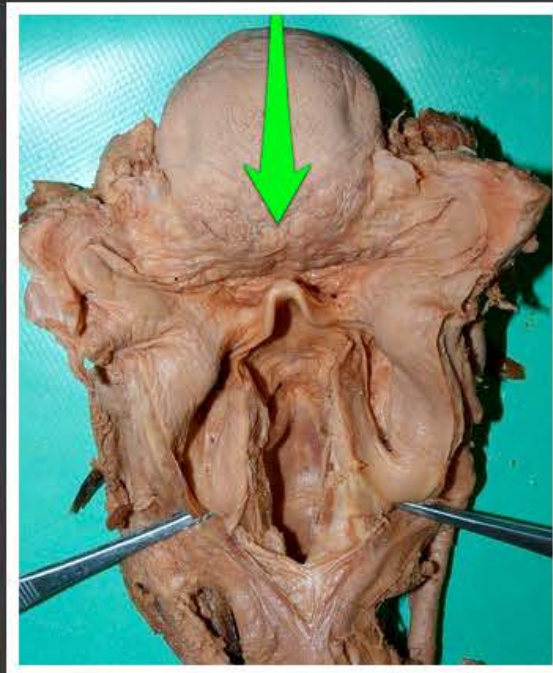
kieszonka krtaniowa (*ventriculus laryngis*)



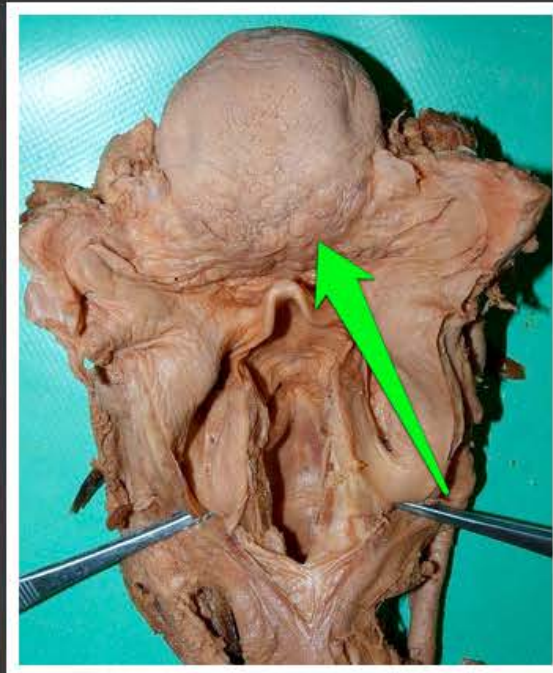
bruzda graniczna języka (*sulcus terminalis linguae*)



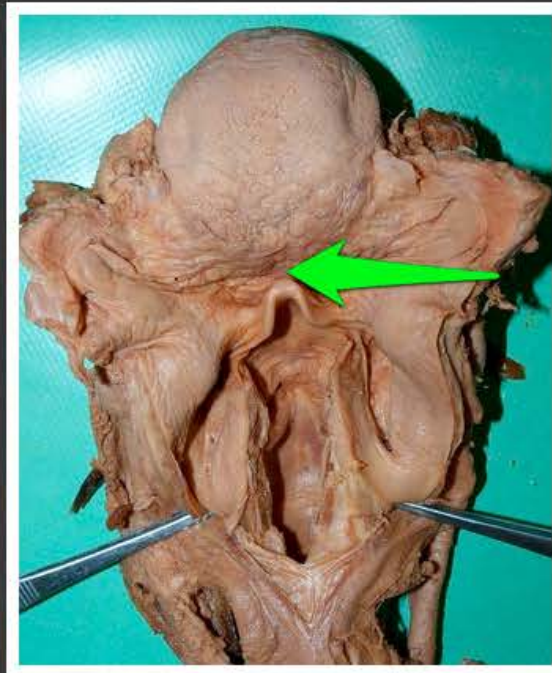
migdałek podniebienny (*tonsilla palatina*)



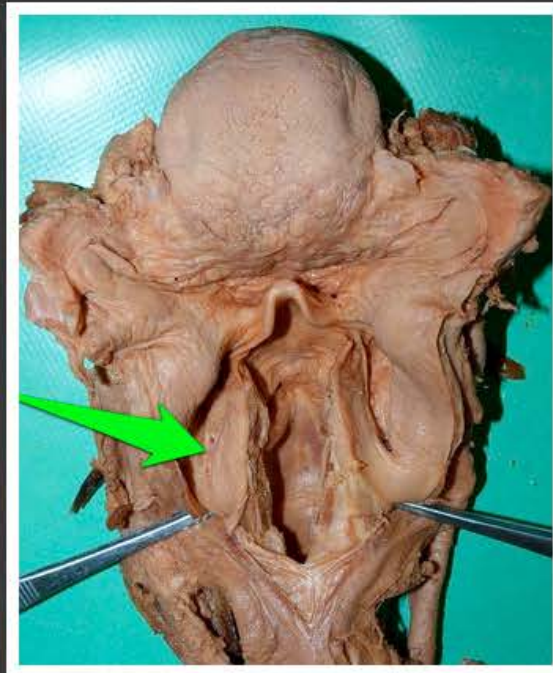
otwór ślepy języka (*foramen cecum
linguae*)



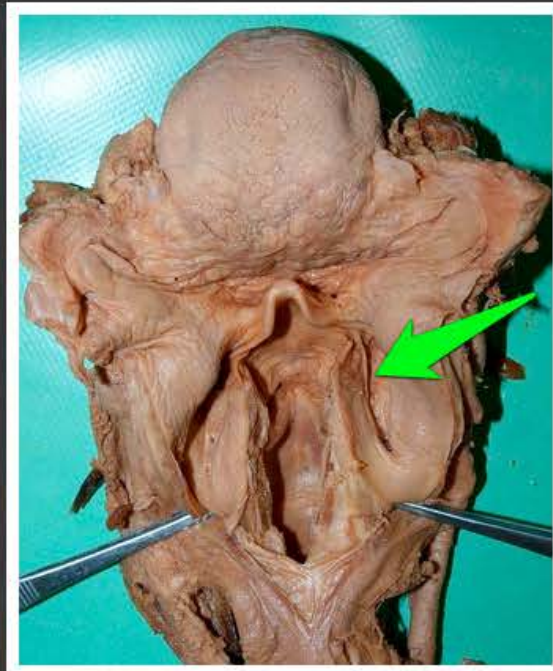
migdałek językowy (*tonsilla lingualis*)



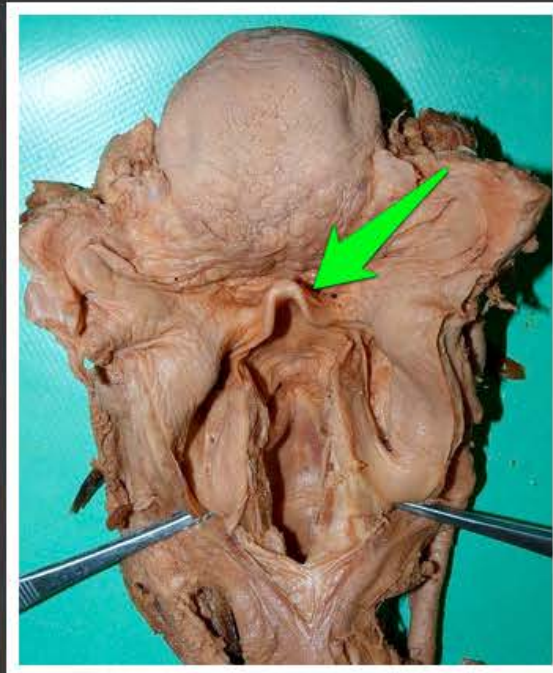
fałd językowo-nagłośniowy
pośrodkowy (*plica glossoepiglottica
mediana*)



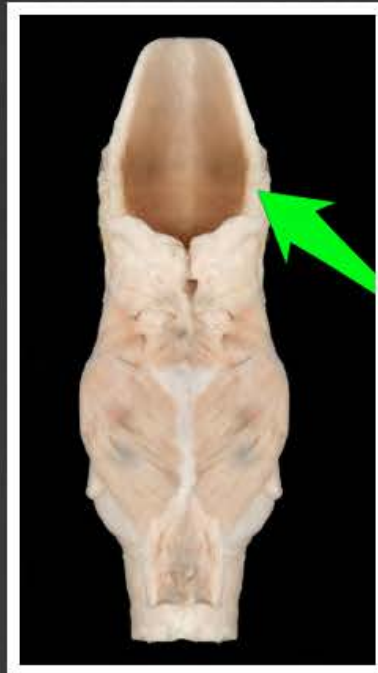
gałąź wewnętrzna nerwu
krtaniowego górnego (*ramus
internus nervi laryngei superioris*)



zachyłek gruszkowaty (*recessus
piriformis*)



dolinka nagłośniowa (*vallecula epiglottica*)



fałd nalewkowo-nagłośniowy (*plica aryepiglottica*)



fałd językowo-nagłośniowy boczny
(*plica glossoepiglottica lateralis*)



płatki ucha (*lobulus auriculae*)



skrawek (*tragus*)



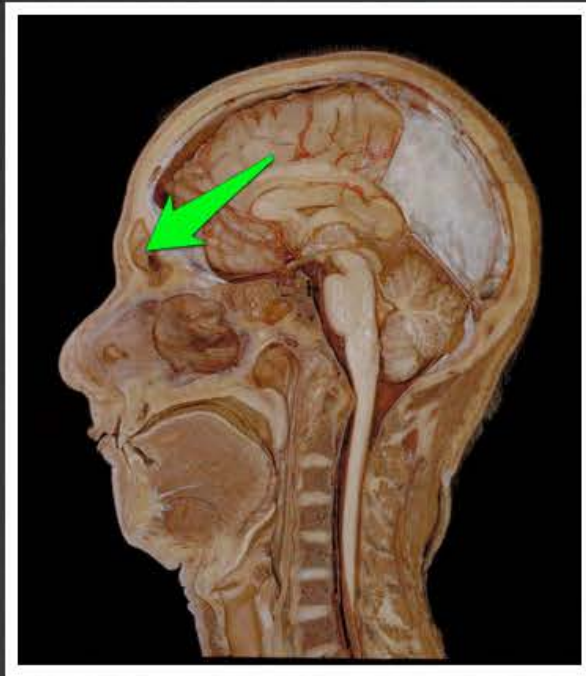
przeciwskrawek (*antitragus*)



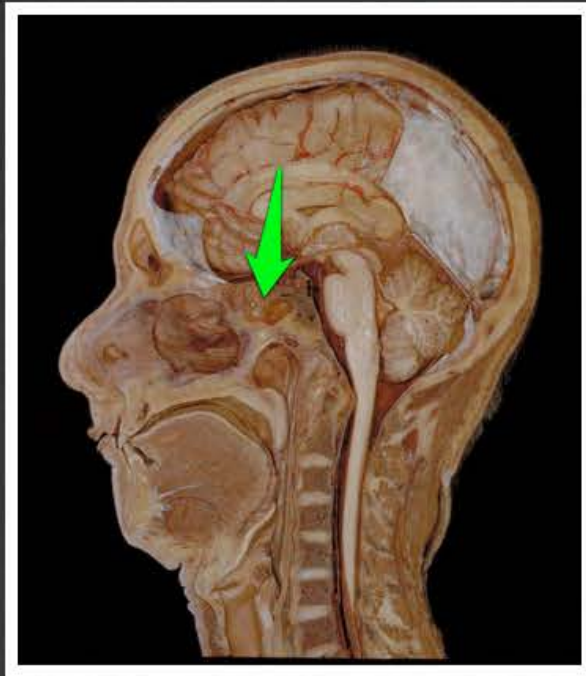
obrąbek (*helix*)



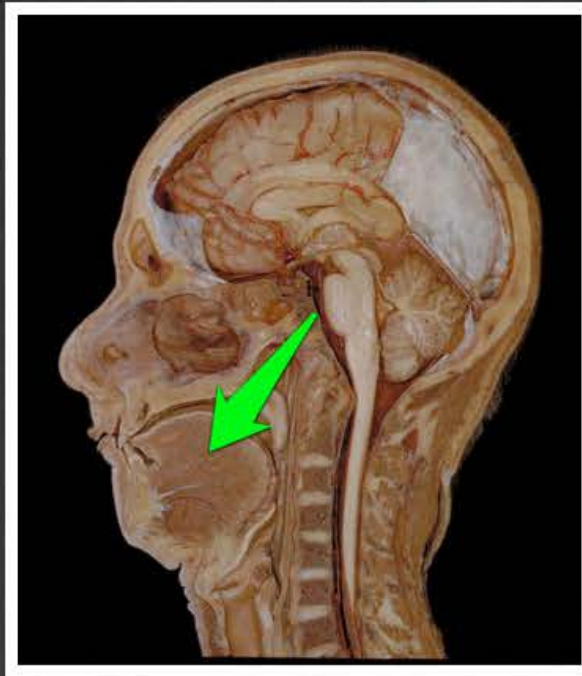
grobelka (*anthelix*)



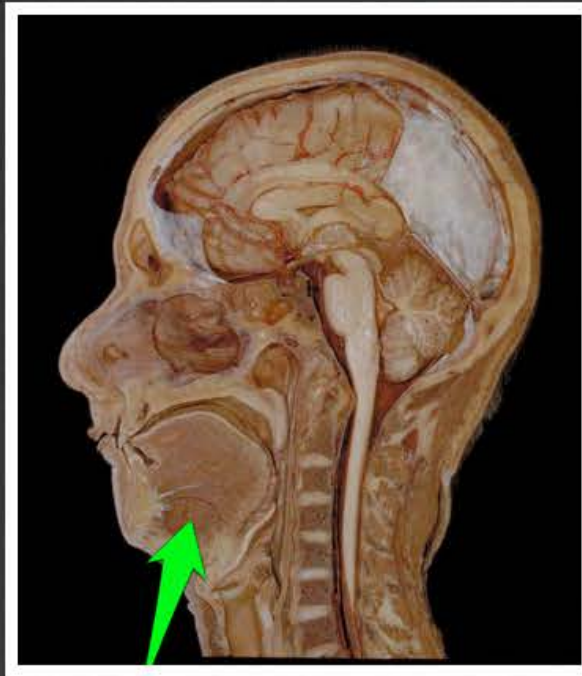
zatoka czołowa (*sinus frontalis*)



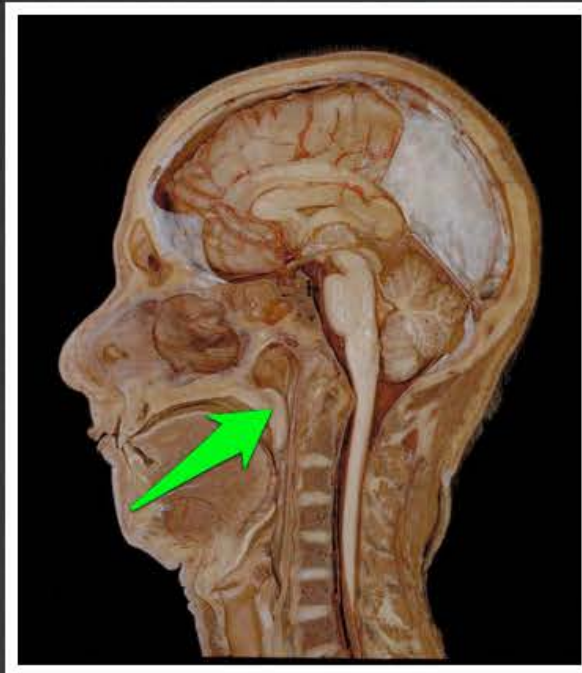
zatoka klinowa (*sinus sphenoidalis*)



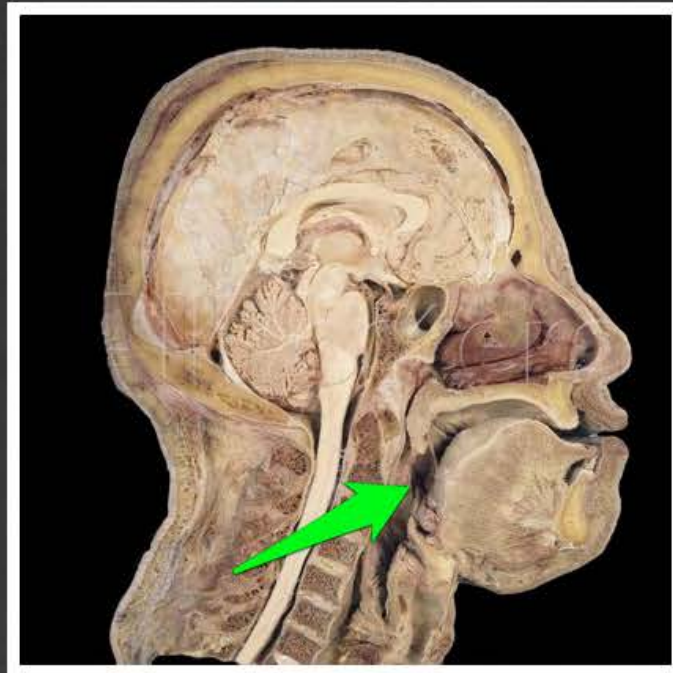
mięsień bródkowo-językowy
(*musculus genioglossus*)



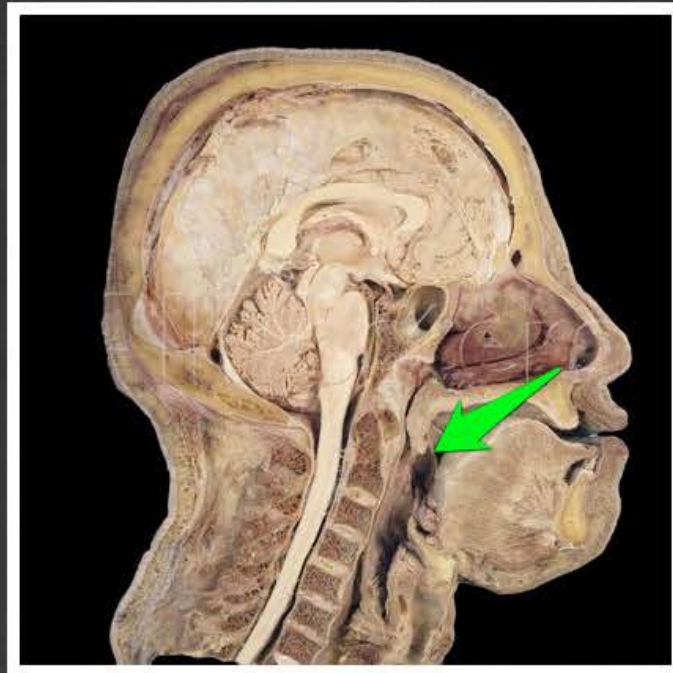
mięsień bródkowo-gnykowy
(*musculus geniohyoideus*)



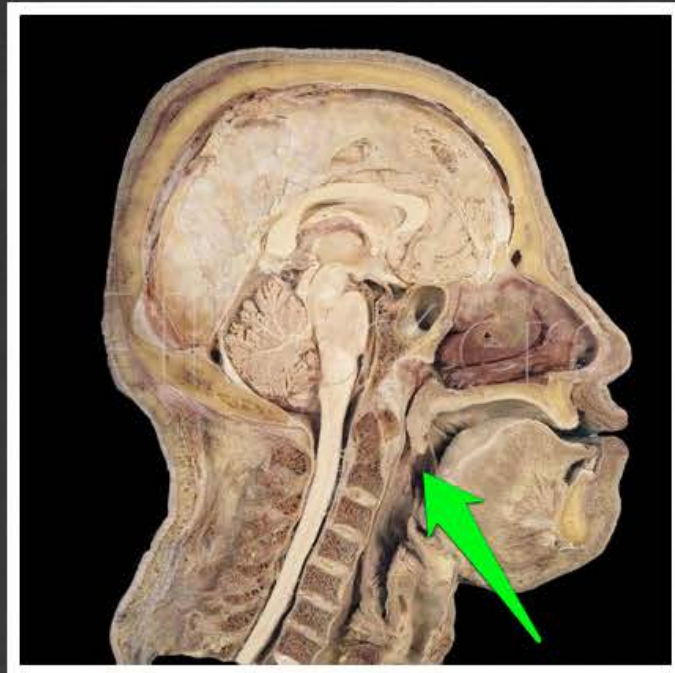
podniebienie miękkie (*palatum molle*)



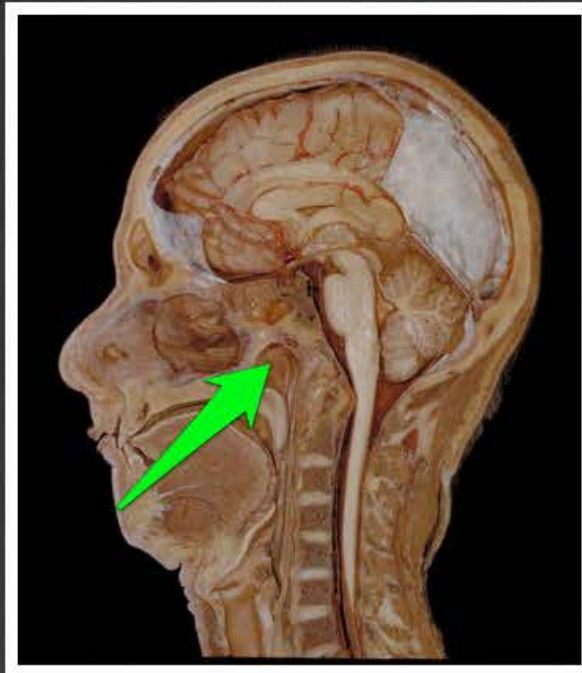
łuk podniebienneo-gardłowy (*arcus palatopharyngeus*)



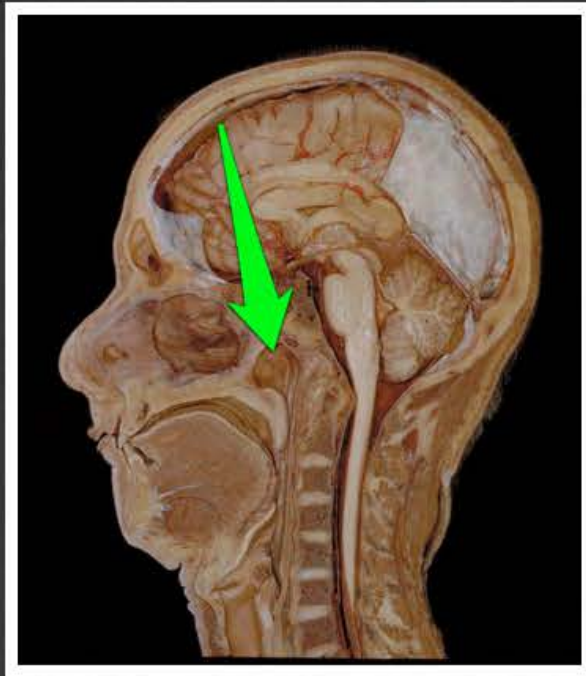
łuk podniebienneo-językowy (*arcus palatoglossus*)



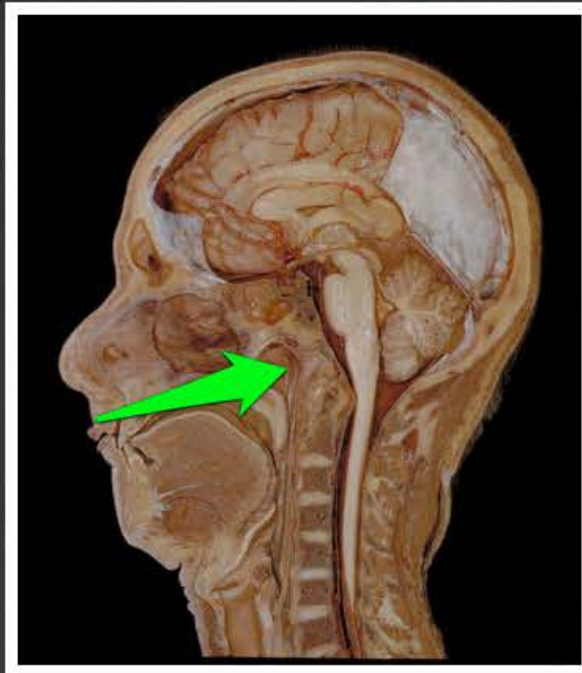
migdałek podniebienny (*tonsilla palatina*)



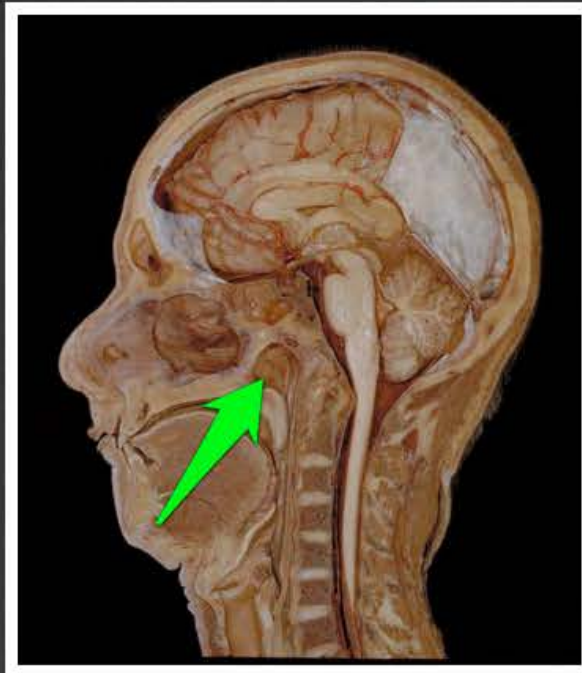
ujście gardłowe trąbki słuchowej
(*ostium pharyngeum tubae
auditivae*)



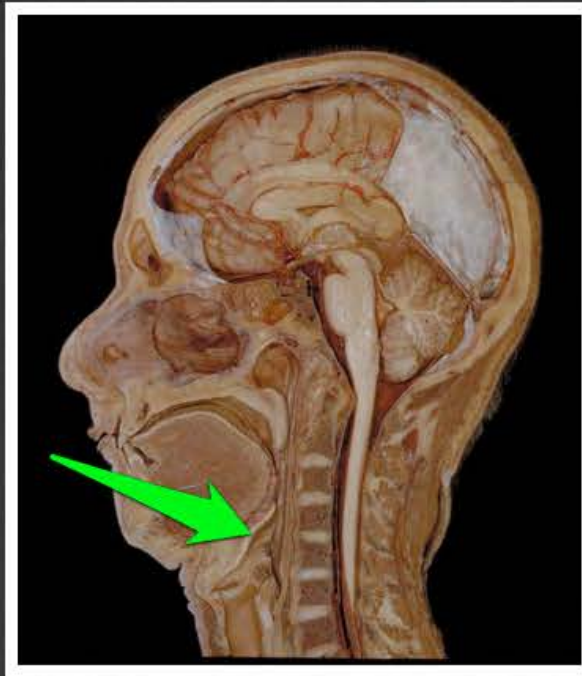
wał trąbkowy (*torus tubarius*)



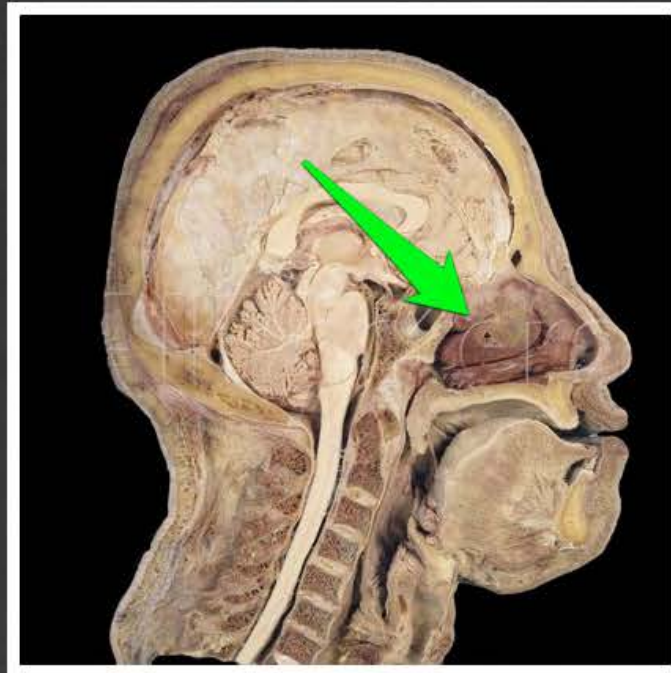
fałd trąbkowo-gardłowy (*plica salpingopharyngea*)



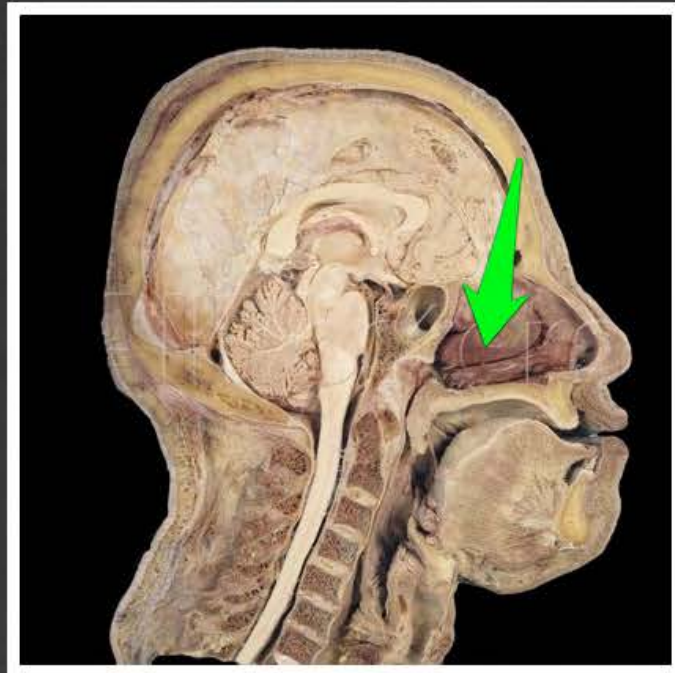
fałd trąbkowo-podniebienny (*plica salpingopalatina*)



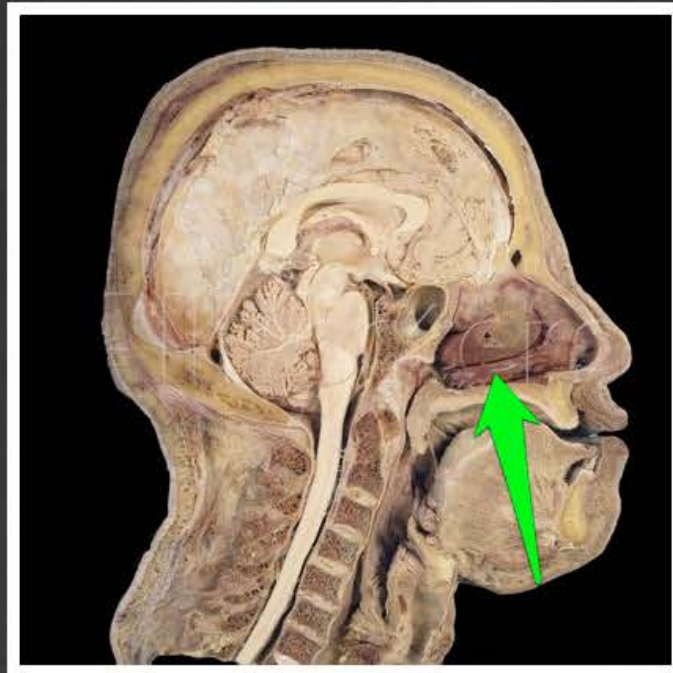
nagłośnia (*epiglottis*)



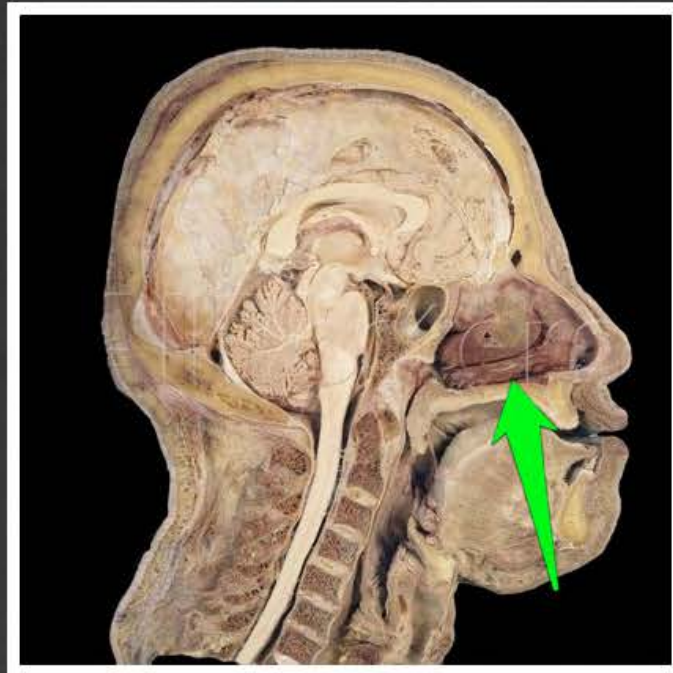
małżowina nosowa górna (*concha nasalis superior*)



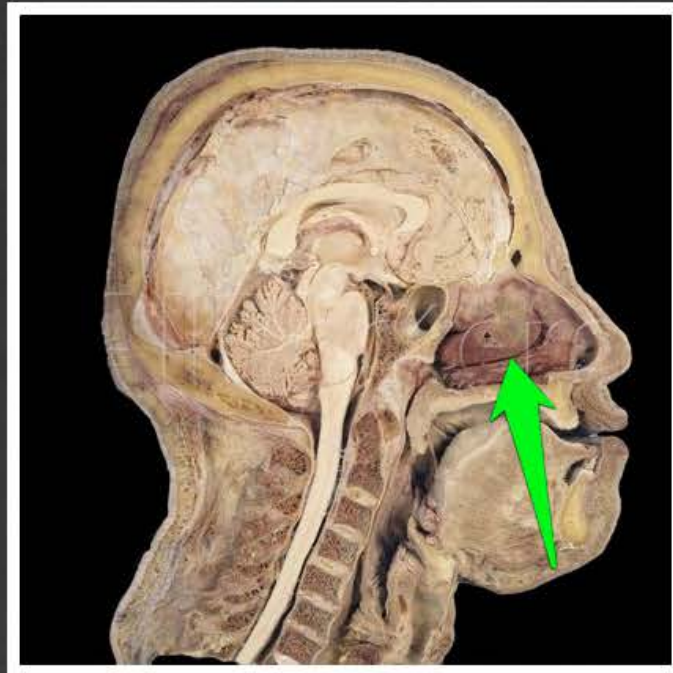
małżowina nosowa środkowa
(*concha nasalis media*)



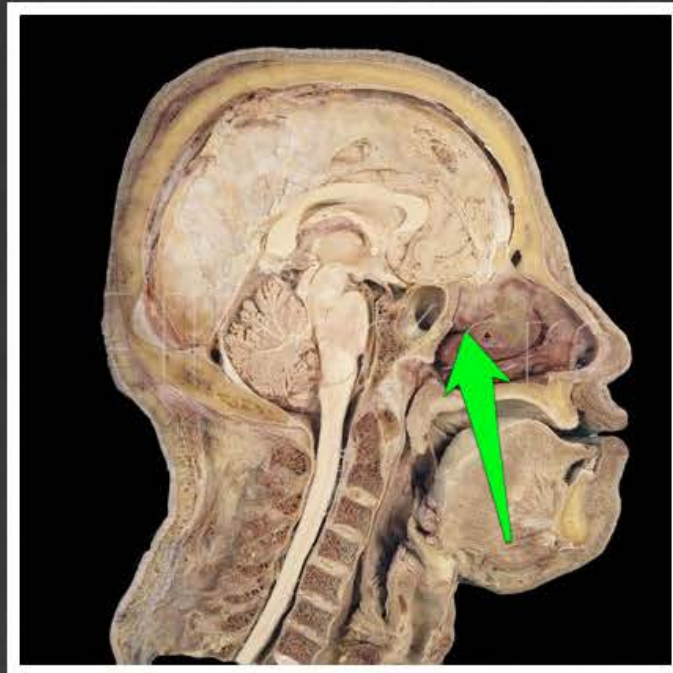
małżowina nosowa dolna (*concha nasalis inferior*)



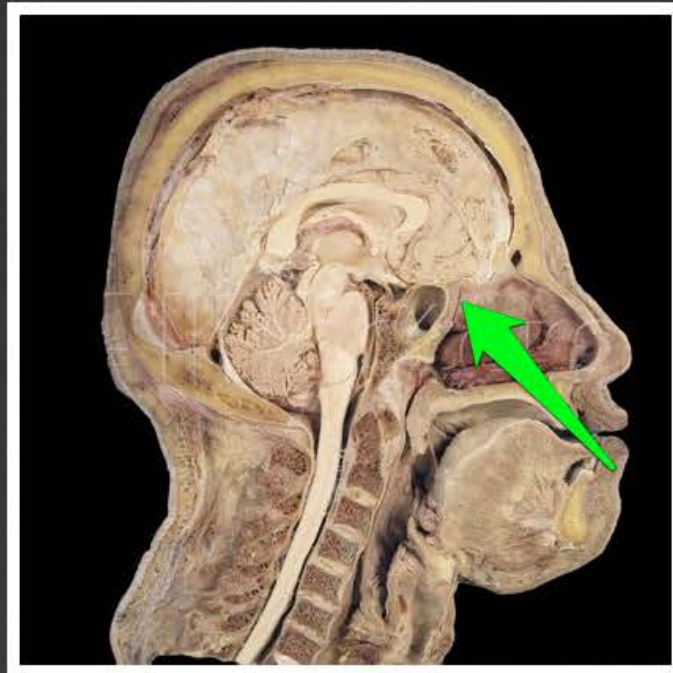
przewód nosowy dolny (*meatus nasi inferior*)



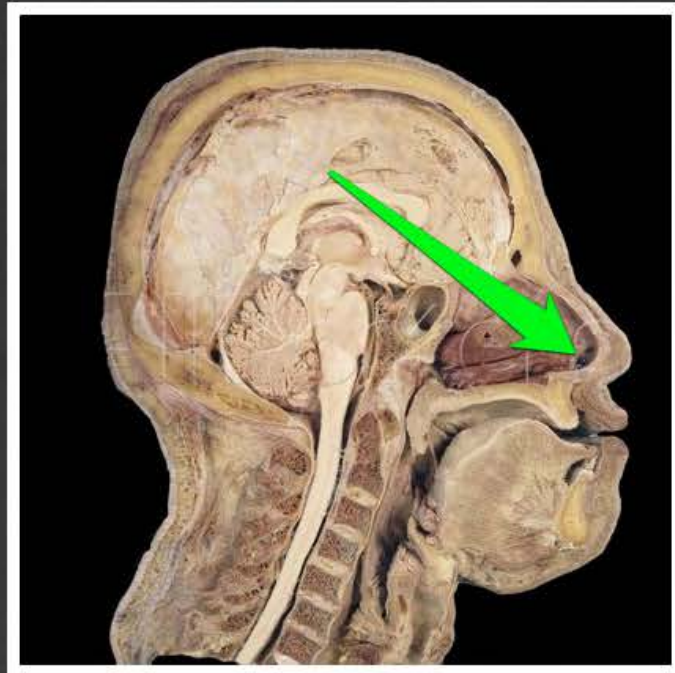
przewód nosowy środkowy (*meatus nasi medius*)



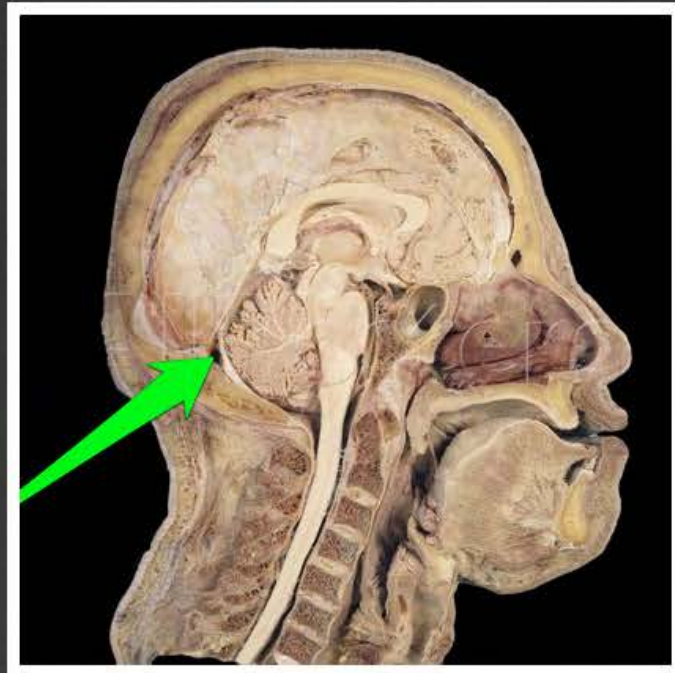
przewód nosowy górny (*meatus nasi superior*)



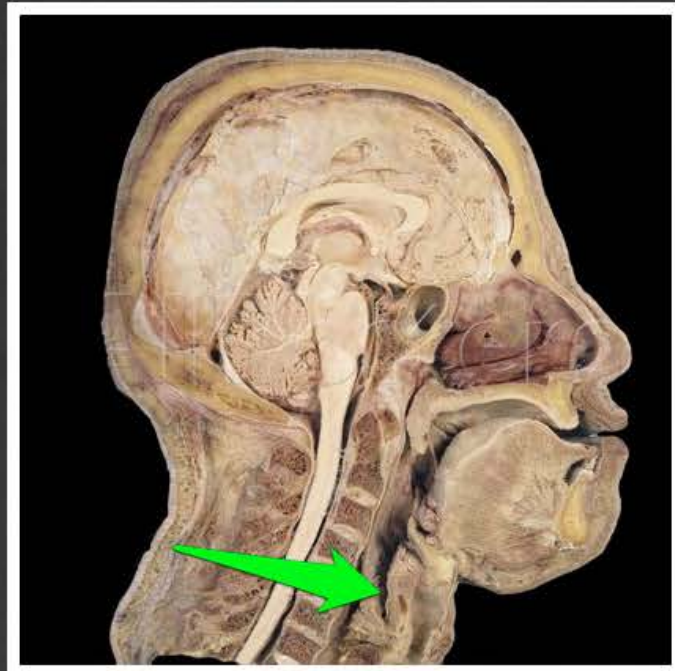
zachyłek klinowo-sitowy (*recessus sphenoidal*)



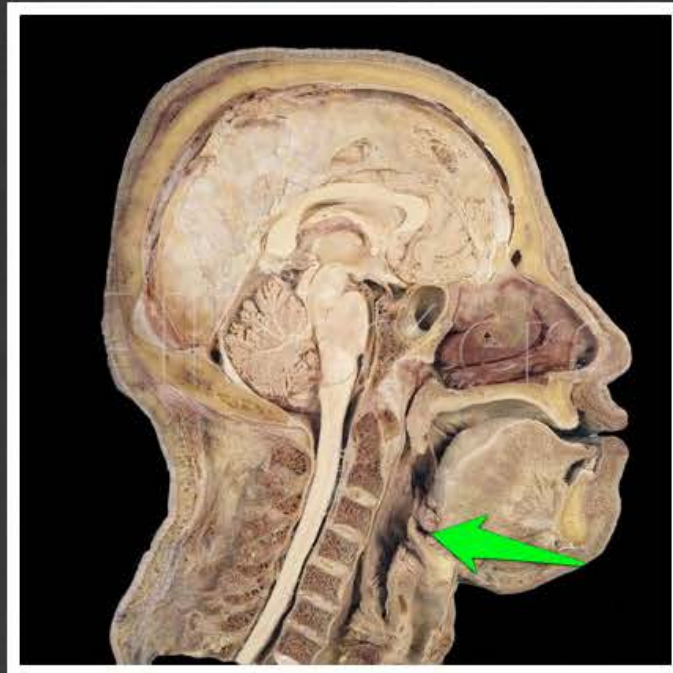
próg nosa (*limen nasi*)



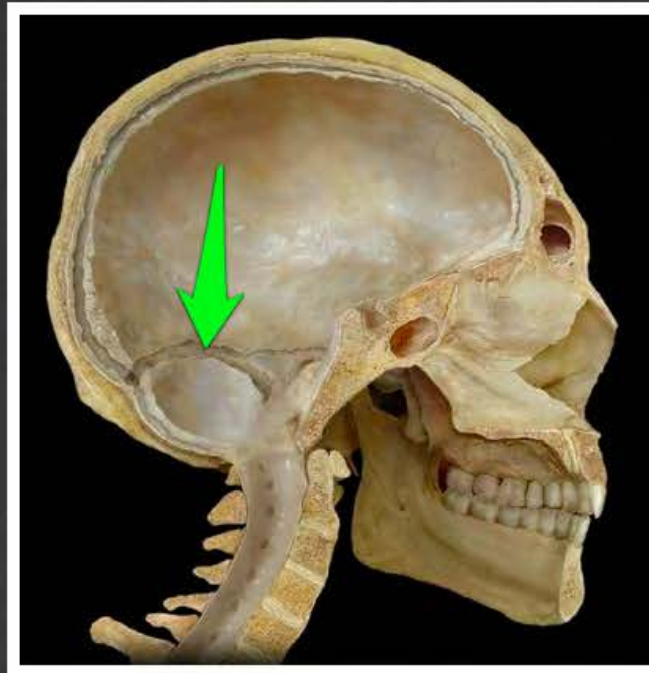
zatoka poprzeczna (*sinus transversus*)



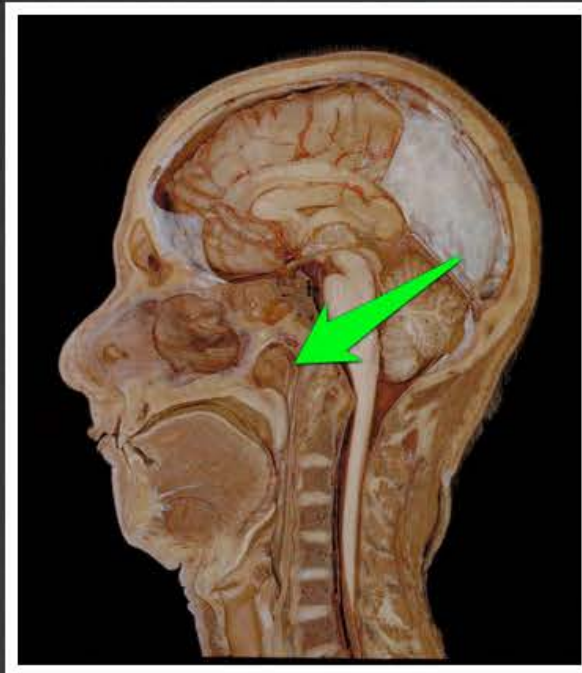
przełyk (*oesophagus*)



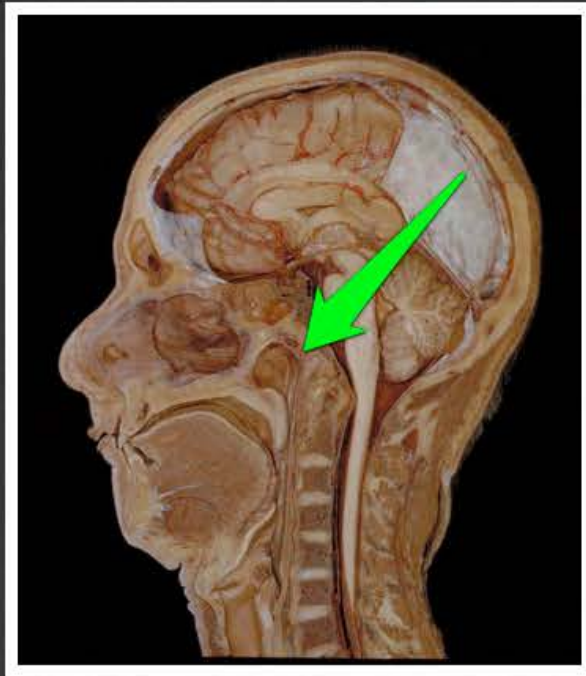
dolinka nagłośniowa (*vallecula epiglottica*)



zatoka esowata (*sinus sigmoideus*)



zachyłek gardłowy (*recessus pharyngeus*)



migdalek gardłowy (*tonsilla pharyngea*)