



General Features

- ◆ Sealed and maintenance free operation.
- ◆ Non-Spillable construction design.
- ◆ ABS containers and covers(UL94HB, UL94V-0) optional.
- ◆ Safety valve installation for explosion proof.
- ◆ High quality and high reliability.
- ◆ Exceptional deep discharge recovery performance.
- ◆ Low self discharge characteristic.
- ◆ Flexibility design for multiple install positions.



| | | | | |
|---|--|--------------------|---|------------------------|
| Battery Type | Valve-Regulated, Absorbed Glass Mat (AGM) Technology | | | |
| Nominal Voltage | 6V | | | |
| Capacity (20°C) | 20HR(0.34A, 1.8V/cell) | 10HR(0.65A, 1.80V) | 5HR(1.19A, 1.75V) | 1HR(4.34A, 1.60V) |
| | 6.98AH | 6.5AH | 5.94AH | 4.34AH |
| Dimensions | Length | Width | Height | Total Height |
| | 151mm(5.94inches) | 34mm(1.34inches) | 94mm(3.70inches) | 100mm(3.94inches) |
| Approx Weight | Approx 1.2 kg (2.65lbs) | | | |
| Internal Resistance | Full Charged at 20°C: Approx 12m Ω | | | |
| Self Discharge | 3% of capacity declined per month at 20°C | | | |
| Capacity affected by Temperature (10HR) | 40°C | 25°C | 0°C | -15°C |
| | 103% | 100% | 86% | 65% |
| Charging Voltage (V) | Cycle use | | Float use | |
| | 7.2V~7.5V at 20 °C. T emp. Coefficient -15mV/ °C | | 6.75V~6.9V at 20 °C.Temp. Coefficient (-10mV/ °C) | |
| Current | Max. Discharge Current | | Initial Charging Current | |
| | 108A | | Less than 2.16A | |
| Operating Temp. Range | Discharge | | Charging | Storage |
| | -15 ~ 50°C (5 ~ 122°F) | | 0 ~ 40°C (32 ~ 104°F) | -15 ~ 40°C (5 ~ 104°F) |

Constant Current Discharge (Amperes) at 20°C (68°F)

| F.V/Time | 5min | 10min | 15min | 20min | 30min | 45min | 1h | 2h | 3h | 4h | 5h | 6h | 8h | 10h | 20h |
|------------|------|-------|-------|-------|-------|-------|------|------|------|------|------|-------|-------|-------|-------|
| 1.85V/cell | 13.0 | 10.0 | 8.3 | 7.16 | 5.60 | 4.12 | 3.48 | 2.06 | 1.61 | 1.31 | 1.08 | 0.935 | 0.754 | 0.630 | 0.346 |
| 1.80V/cell | 17.5 | 12.8 | 10.0 | 8.47 | 6.61 | 4.80 | 3.89 | 2.24 | 1.73 | 1.40 | 1.16 | 1.00 | 0.800 | 0.650 | 0.349 |
| 1.75V/cell | 19.7 | 14.0 | 10.9 | 9.11 | 6.86 | 4.98 | 4.07 | 2.33 | 1.76 | 1.43 | 1.19 | 1.03 | 0.814 | 0.667 | 0.353 |
| 1.70V/cell | 21.7 | 15.3 | 11.7 | 9.57 | 7.14 | 5.18 | 4.20 | 2.38 | 1.81 | 1.47 | 1.22 | 1.05 | 0.825 | 0.680 | 0.359 |
| 1.65V/cell | 23.9 | 16.5 | 12.4 | 10.2 | 7.53 | 5.31 | 4.30 | 2.42 | 1.89 | 1.52 | 1.25 | 1.07 | 0.838 | 0.694 | 0.364 |
| 1.60V/cell | 26.4 | 17.9 | 13.3 | 10.8 | 7.95 | 5.53 | 4.34 | 2.52 | 1.95 | 1.56 | 1.29 | 1.10 | 0.846 | 0.702 | 0.366 |

Constant Power Discharge (Watts) at 20°C (68°F)

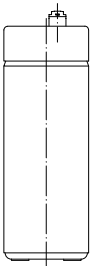
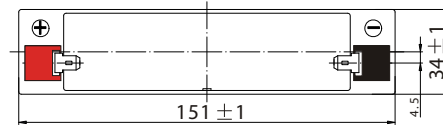
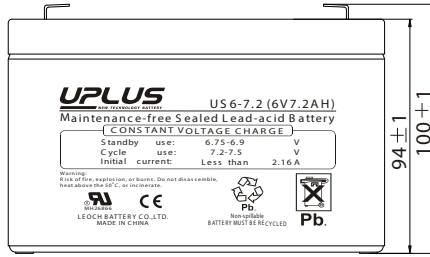
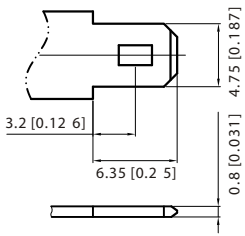
| F.V/Time | 5min | 10min | 15min | 20min | 30min | 45min | 1h | 2h | 3h | 4h | 5h | 6h | 8h | 10h | 20h |
|------------|------|-------|-------|-------|-------|-------|------|------|------|------|------|------|------|------|-------|
| 1.85V/cell | 23.8 | 18.5 | 15.5 | 13.5 | 10.7 | 7.93 | 6.70 | 3.99 | 3.14 | 2.56 | 2.11 | 1.84 | 1.49 | 1.25 | 0.685 |
| 1.80V/cell | 31.6 | 23.3 | 18.4 | 15.7 | 12.4 | 9.15 | 7.47 | 4.33 | 3.35 | 2.72 | 2.26 | 1.96 | 1.57 | 1.28 | 0.691 |
| 1.75V/cell | 34.9 | 25.2 | 19.9 | 16.8 | 12.8 | 9.40 | 7.78 | 4.47 | 3.40 | 2.77 | 2.31 | 2.01 | 1.60 | 1.32 | 0.697 |
| 1.70V/cell | 37.4 | 26.9 | 20.9 | 17.5 | 13.2 | 9.74 | 8.00 | 4.57 | 3.49 | 2.83 | 2.36 | 2.05 | 1.62 | 1.34 | 0.709 |
| 1.65V/cell | 40.6 | 28.7 | 22.1 | 18.4 | 13.8 | 9.90 | 8.13 | 4.61 | 3.62 | 2.92 | 2.42 | 2.09 | 1.64 | 1.37 | 0.718 |
| 1.60V/cell | 43.8 | 30.5 | 23.2 | 19.4 | 14.5 | 10.3 | 8.16 | 4.79 | 3.72 | 3.00 | 2.49 | 2.13 | 1.65 | 1.38 | 0.721 |



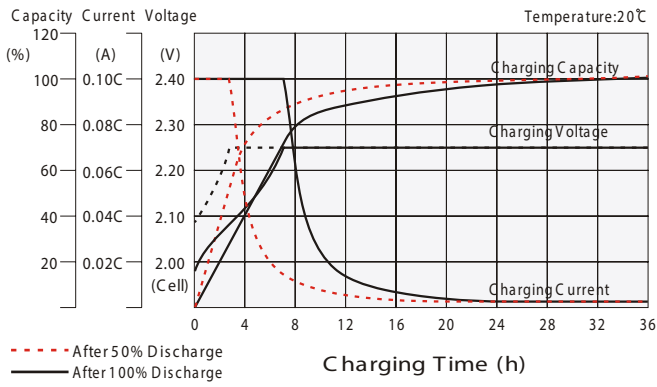
Dimensions

T1 Terminal

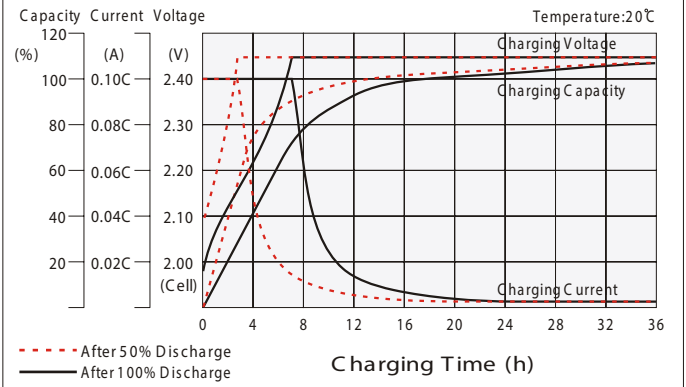
Unit: mm [inches]



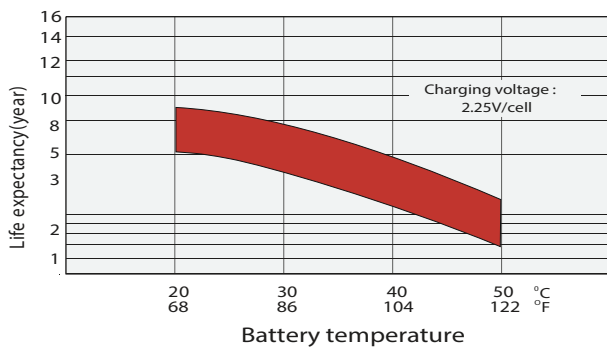
Float charging characteristics



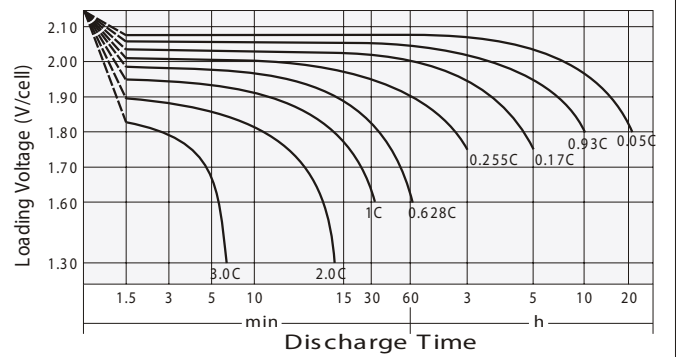
Cycle use charging characteristics



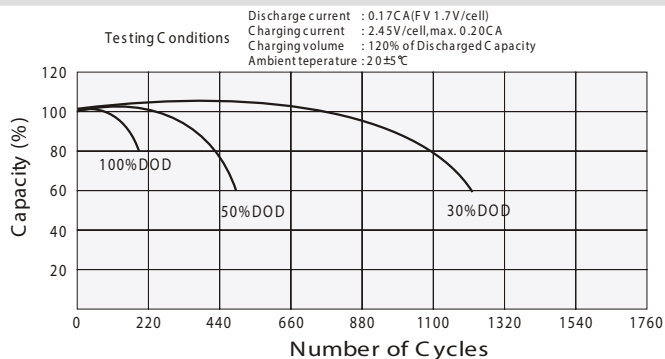
Effect of Temperature on Long Term Float Life



Discharge characteristics



Cycle Life in Relation to Depth of Discharge



Self Discharge Characteristics

