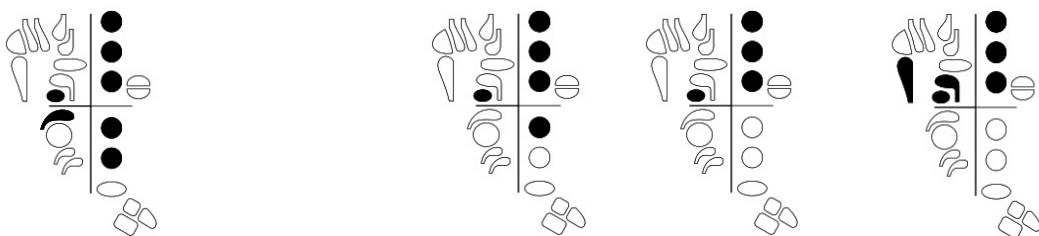
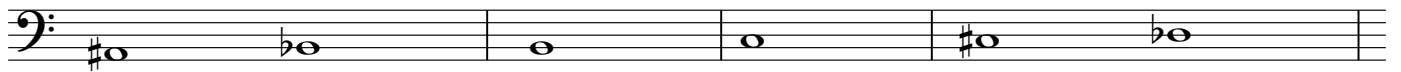
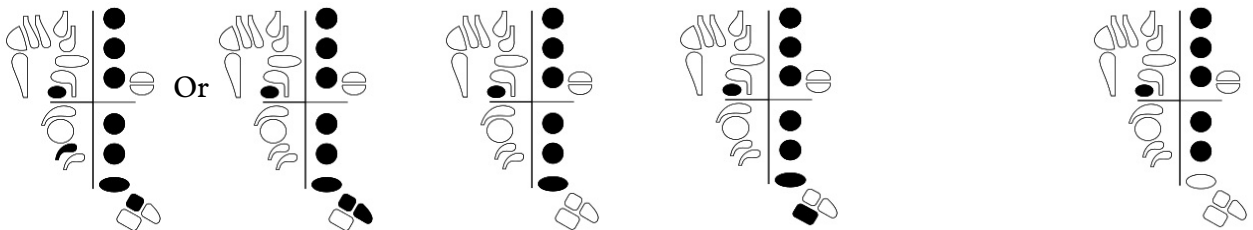
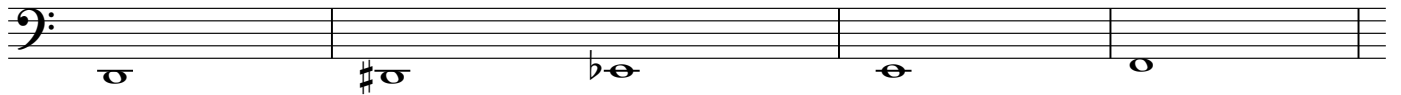
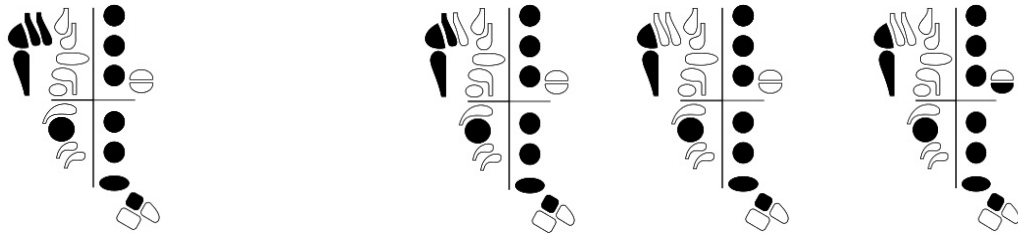
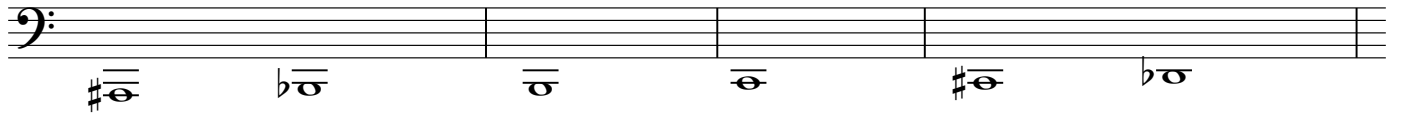
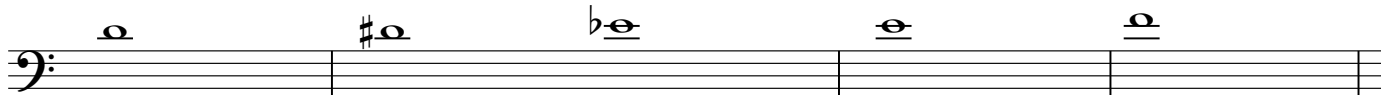
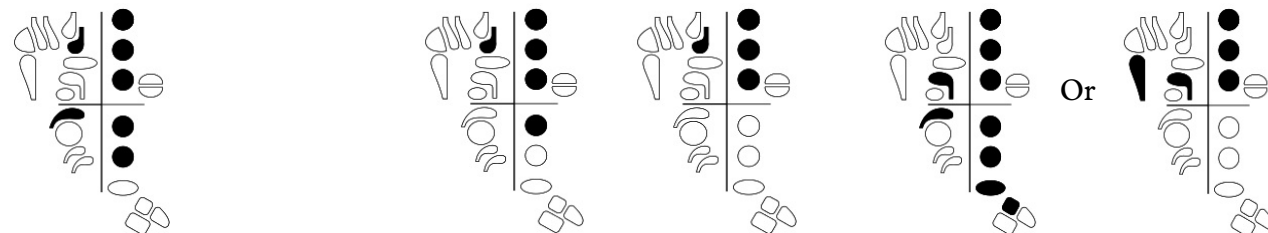
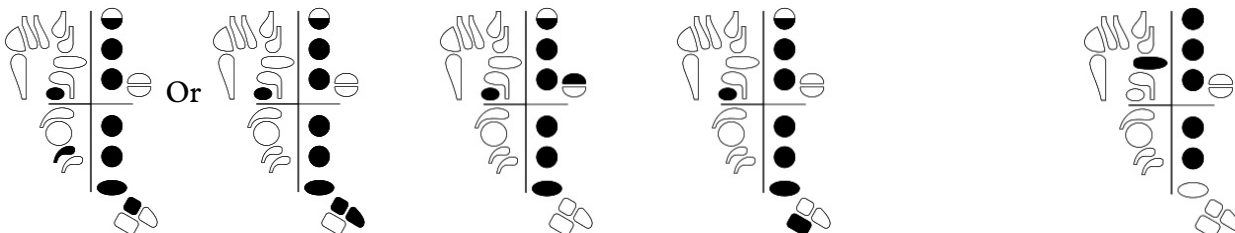
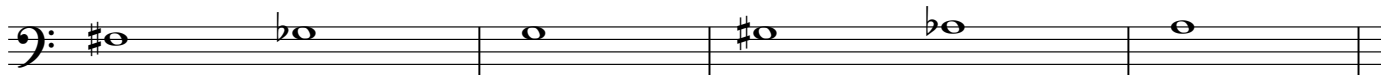
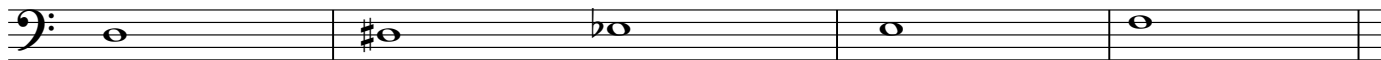


Bassoon Fingering Chart

Dr. Stephanie Patterson





A musical staff with a bass clef. Above the staff are six chord symbols: #b, b, |, #, b, b. The staff is divided into six measures by vertical bar lines.

Four guitar chord diagrams corresponding to the first four measures of the first staff. Each diagram shows a guitar fretboard with circles representing strings and dots representing fretted notes. The diagrams are for chords #b, b, |, and #.

A musical staff with a bass clef. Above the staff are six chord symbols: #b, b, |, b, #b, b. The staff is divided into six measures by vertical bar lines.

Five guitar chord diagrams corresponding to the first five measures of the second staff. The diagrams are for chords #b, b, |, b, and #b. The fifth measure contains two diagrams separated by the word "Or", representing alternative voicings for the #b chord.

A musical staff with a bass clef. Above the staff are six chord symbols: b, #b, b, b, |, b. The staff is divided into six measures by vertical bar lines.

Six guitar chord diagrams corresponding to the six measures of the third staff. The diagrams are for chords b, #b, b, b, |, and b. The second and fourth measures each contain two diagrams separated by the word "Or", representing alternative voicings for the #b and b chords respectively.