



General Features

- ◆ Sealed and maintenance free operation.
- ◆ Non-Spillable construction design.
- ◆ ABS containers and covers(UL94HB, UL94V-0) optional.
- ◆ Safety valve installation for explosion proof.
- ◆ High quality and high reliability.
- ◆ Exceptional deep discharge recovery performance.
- ◆ Low self discharge characteristic.
- ◆ Flexibility design for multiple install positions.



| | | | | |
|--|--|-------------------|---|--------------------|
| Battery Type | Valve-Regulated, Absorbed Glass Mat (AGM) Technology | | | |
| Nominal Voltage | 2V | | | |
| Capacity(20°C) | 20HR(104.9A, 1.8V/cell) | 10HR(194A, 1.80V) | 5HR(337.5A, 1.75V) | 1HR(1197A, 1.60V) |
| | 2098AH | 1940AH | 1687.5AH | 1197AH |
| Dimensions | Length | Width | Height | Total Height |
| | 321mm(12.64inches) | 320mm(12.6inches) | 621mm(24.45inches) | 651mm(25.63inches) |
| Approx Weight | Approx 144.0 kg (317.5lbs) | | | |
| Internal Resistance | Full Charged at 20°C : Approx 0.28mΩ | | | |
| Self Discharge | 3% of capacity declined per month at 20°C | | | |
| Capacity affected by Temperature(10HR) | 40°C | 25°C | 0°C | -15°C |
| | 103% | 100% | 86% | 65% |
| Charging Voltage (V) | Cycle use | | Float use | |
| | 2.4V~2.5V at 20°C. Temp. Coefficient -5mV/°C | | 2.25V~2.3V at 20°C. Temp. Coefficient (-3mV/°C) | |
| Current | Max. Discharge Current | | Initial Charging Current | |
| | 16000A | | Less than 600.0A | |
| Operating Temp. Range | Discharge | | Charging | |
| | -15~50°C (5~122°F) | | 0~40°C (32~104°F) | |
| | | | Storage | |
| | | | -15~40°C (5~104°F) | |

Constant Current Discharge (Amperes) at 20 °C (68°F)

| F.V/Time | 30min | 45min | 1h | 2h | 3h | 4h | 5h | 6h | 8h | 10h | 20h |
|------------|--------|--------|--------|-------|-------|-------|-------|-------|-------|-------|-------|
| 1.85V/cell | 1349.0 | 1051.3 | 915.8 | 605.8 | 451.2 | 369.6 | 311.0 | 275.2 | 220.9 | 187.8 | 101.3 |
| 1.80V/cell | 1470.6 | 1129.9 | 974.7 | 652.8 | 485.1 | 393.1 | 329.9 | 291.6 | 232.3 | 194.0 | 104.9 |
| 1.75V/cell | 1596.0 | 1231.2 | 1058.3 | 678.7 | 504.3 | 406.6 | 337.5 | 300.7 | 240.3 | 201.2 | 107.5 |
| 1.70V/cell | 1740.4 | 1330.0 | 1122.9 | 714.2 | 530.6 | 424.8 | 356.7 | 315.3 | 250.3 | 208.9 | 110.2 |
| 1.65V/cell | 1835.4 | 1403.5 | 1160.9 | 739.2 | 552.3 | 441.6 | 367.9 | 326.2 | 258.7 | 214.8 | 113.7 |
| 1.60V/cell | 1968.4 | 1459.2 | 1197.0 | 761.3 | 566.4 | 451.2 | 377.1 | 333.0 | 263.4 | 219.2 | 115.5 |

Constant Power Discharge (Watts) at 20 °C (68°F)

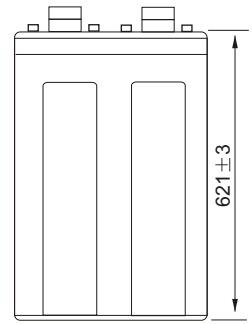
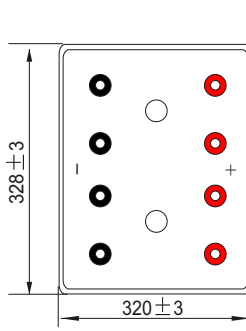
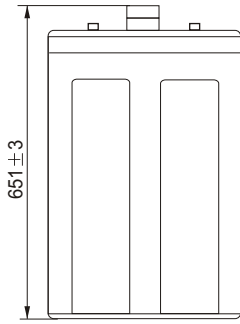
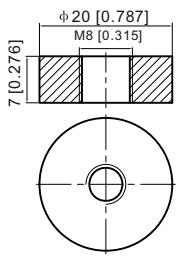
| F.V/Time | 30min | 45min | 1h | 2h | 3h | 4h | 5h | 6h | 8h | 10h | 20h |
|------------|--------|--------|--------|--------|--------|-------|-------|-------|-------|-------|-------|
| 1.85V/cell | 2618.4 | 2057.7 | 1798.5 | 1197.6 | 895.3 | 735.6 | 620.7 | 550.6 | 443.9 | 378.2 | 204.2 |
| 1.80V/cell | 2811.5 | 2194.4 | 1904.2 | 1282.1 | 957.2 | 778.3 | 655.2 | 581.3 | 465.4 | 390.1 | 211.1 |
| 1.75V/cell | 3026.5 | 2368.8 | 2058.2 | 1328.1 | 991.3 | 802.1 | 668.2 | 597.5 | 480.4 | 404.1 | 216.1 |
| 1.70V/cell | 3282.4 | 2549.6 | 2177.0 | 1394.8 | 1041.0 | 836.6 | 705.1 | 625.5 | 499.8 | 419.4 | 221.4 |
| 1.65V/cell | 3433.7 | 2666.6 | 2234.7 | 1435.2 | 1079.1 | 866.4 | 724.6 | 645.3 | 515.4 | 430.4 | 228.2 |
| 1.60V/cell | 3657.3 | 2757.9 | 2292.3 | 1471.1 | 1101.6 | 882.5 | 740.3 | 656.7 | 523.5 | 438.6 | 231.5 |



Dimensions

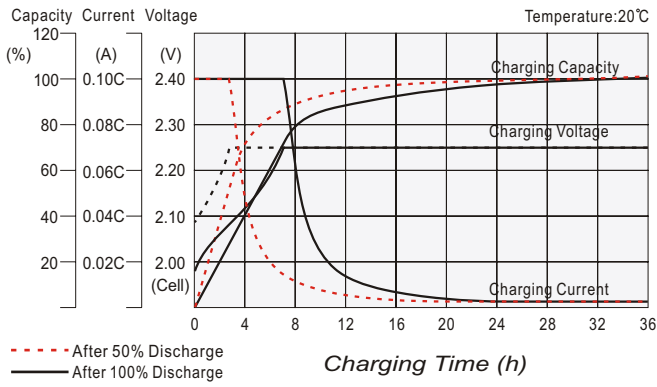
T11 Terminal

Unit: mm [inches]

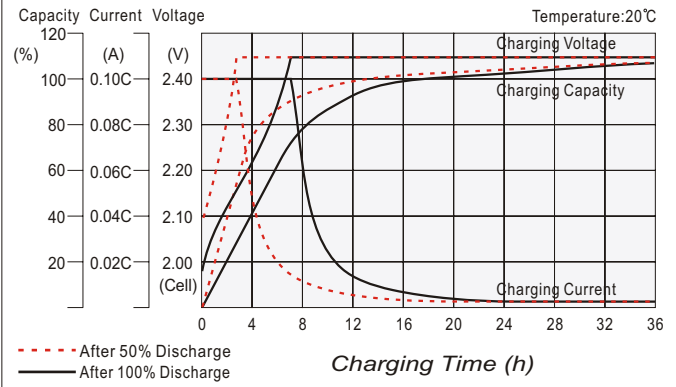


Torque: 11~14.7N*M

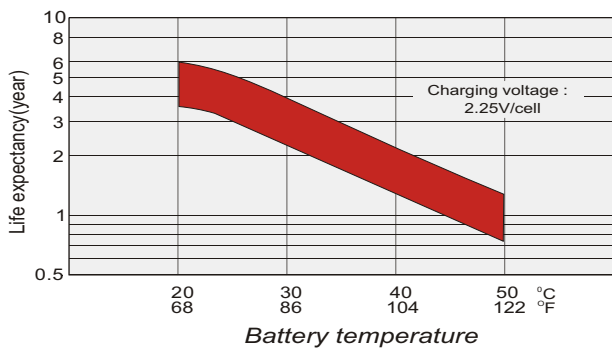
Float charging characteristics



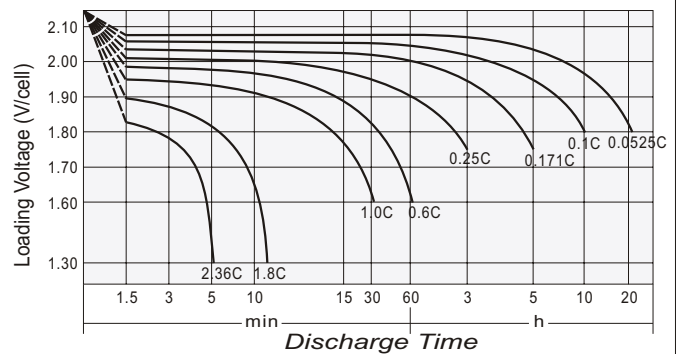
Cycle use charging characteristics



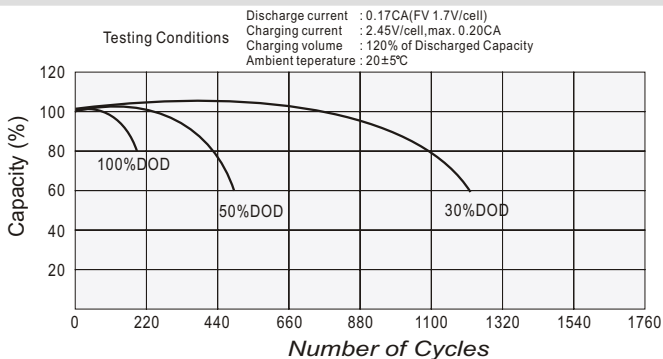
Effect of Temperature on Long Term Float Life



Discharge characteristics



Cycle Life in Relation to Depth of Discharge



Self Discharge Characteristics

