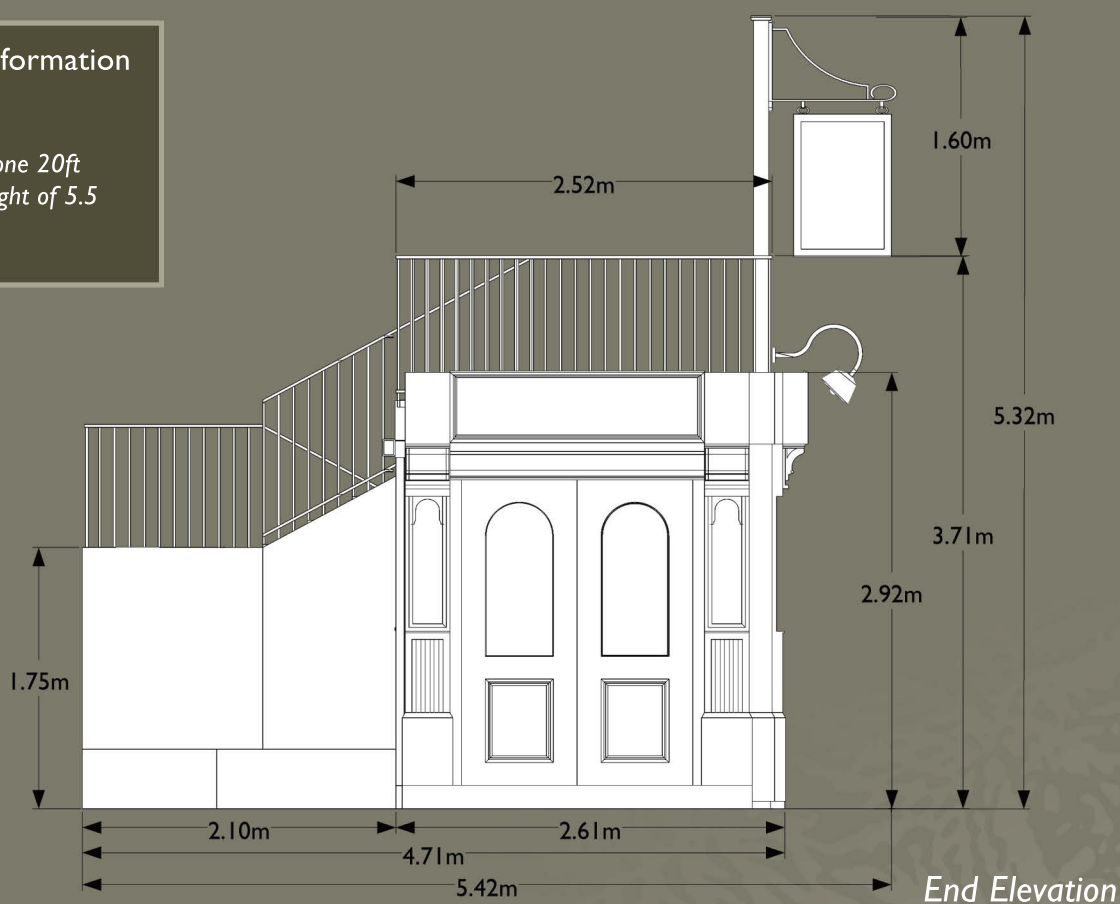


DIMENSIONS: THE RED LION



Container weight information

The Red Lion consists of one 20ft container with a total weight of 5.5 tonnes.

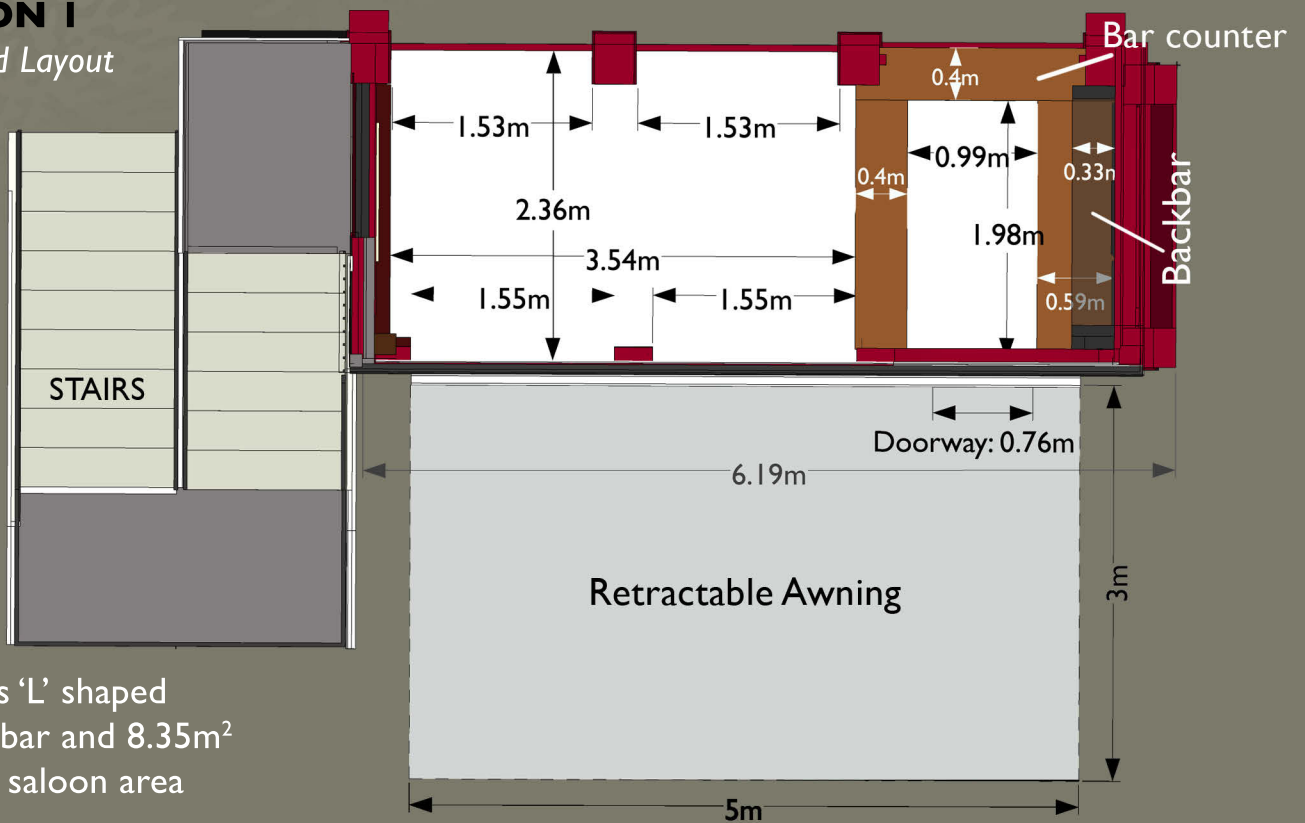


FLOOR PLANS: THE RED LION

The Red Lion is available in three different layout options: *Standard*, *Front Serving Bar* and *Walkthrough Bar*. The following information shows the different options in ground floor plan view format.

OPTION 1

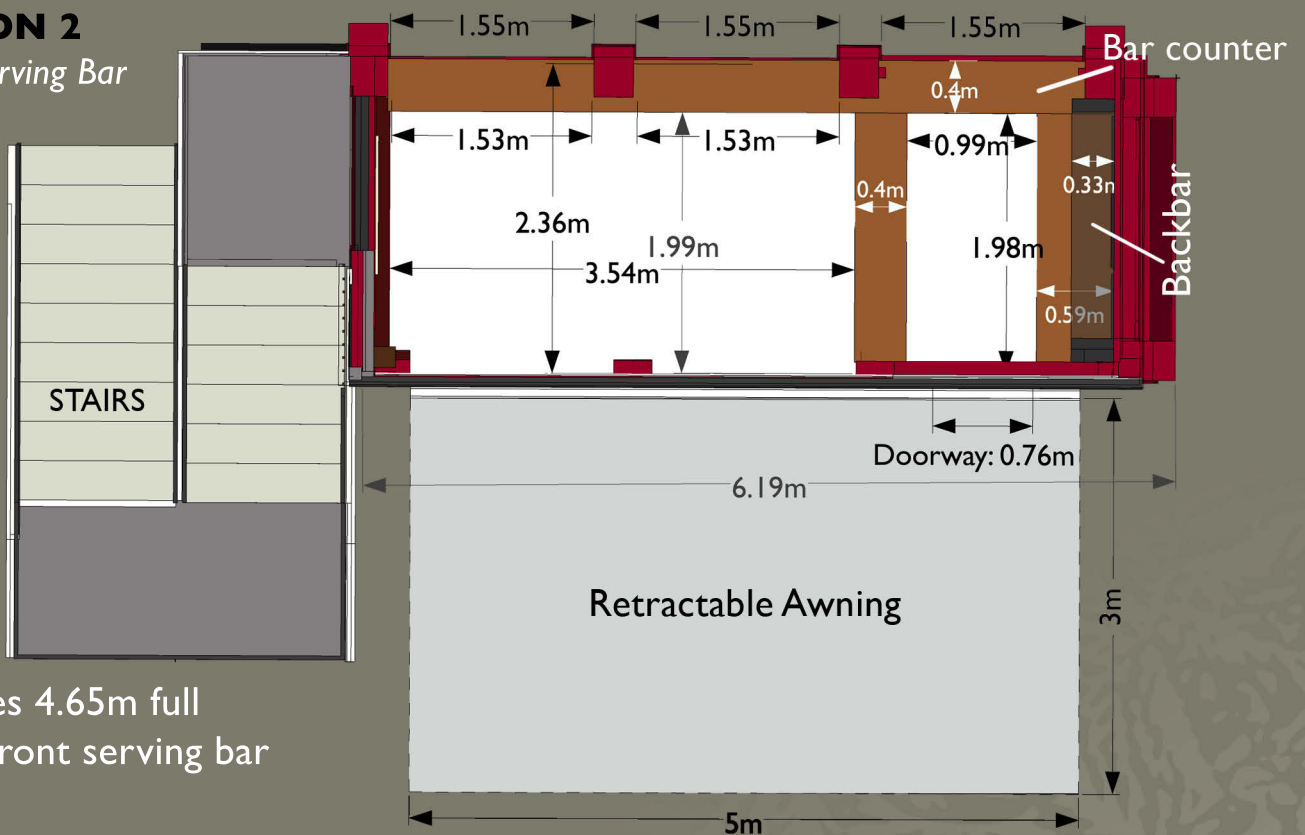
Standard Layout



Features 'L' shaped serving bar and 8.35m² internal saloon area

OPTION 2

Front Serving Bar



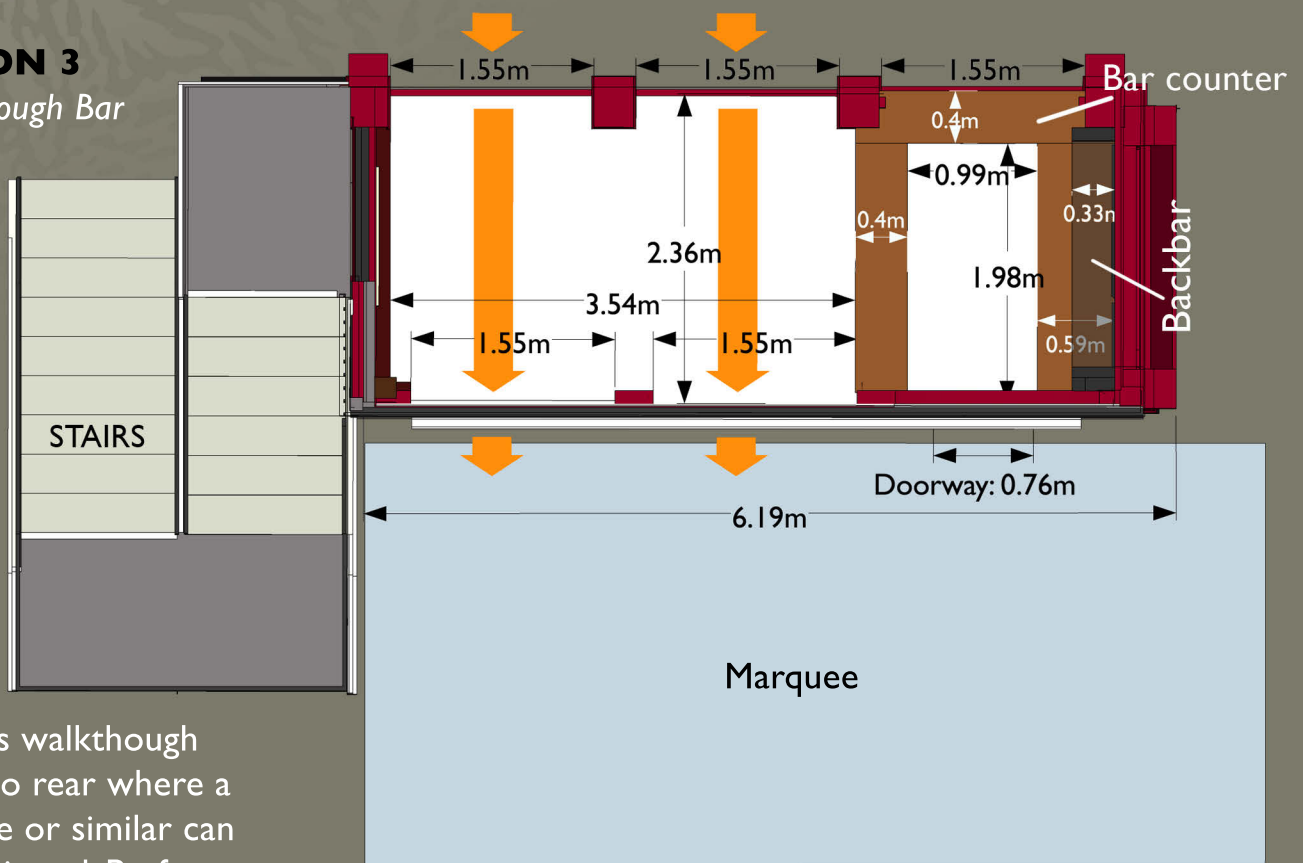
Features 4.65m full width front serving bar

Dimensions are approximate and for guidance only

FLOOR PLANS: THE RED LION

OPTION 3

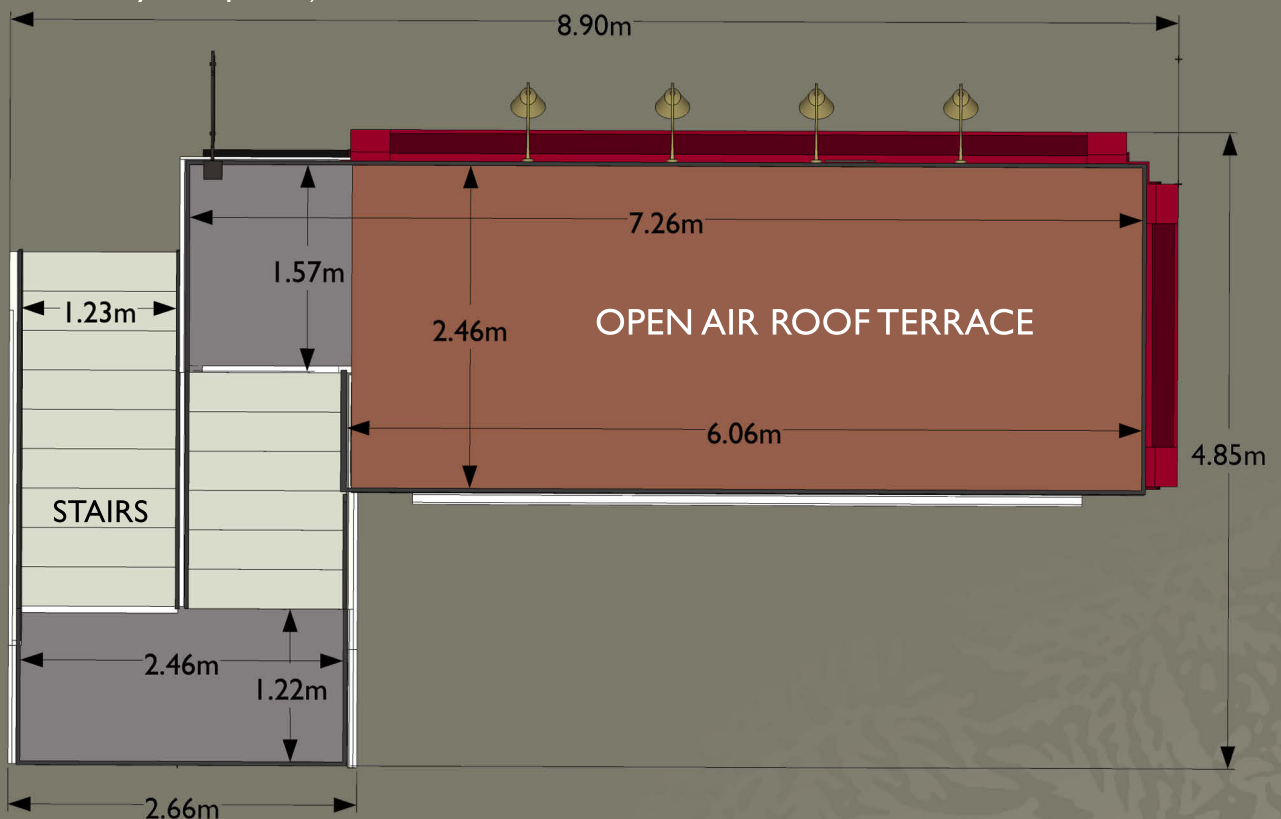
Walkthrough Bar



Features walkthrough access to rear where a marquee or similar can be positioned. Perfect for meet and greet or champagne receptions

FIRST FLOOR PLAN

(Common to all layout options)



Dimensions are approximate and for guidance only

CUSTOMISE IT: CUSTOM SIGNAGE DIMENSIONS

The pub is named *The Red Lion* as standard, but it can be renamed for any occasion. The following signage locations can be designed and changed to suit any requirement. Additional artwork specifications are available on request.

Red 3D letters - Standard font used is *Newbold*, but many other fonts can be used as these letters are CNC cut and hand painted. The total useable area of this panel is 5210 x 405mm.



Double Sided Hanging Sign
(Printable area: 784mm x 510mm)

We also offer the option to customise any aspect of the pub's appearance. We can supply extras such as a widescreen TV, sound system and floral arrangements. In addition, we can work with your designer, marketing team or print supplier to achieve your desired result.

ABOUT US

Pop-up Pubs are brought to you by Spacial Installations. We have many years of experience in supplying high quality set design and build to the events industry, including Goodwood Revival, Hyde Park BST, X-Factor and MTV to name a few. You can see more of our work at www.spacial-installations.co.uk



Three storey bar and venue entrance built from nine shipping containers at Hyde Park British Summer Time Festival.

ENQUIRIES

For all enquiries, please contact us by telephone on 01993 832155, or by email at: enquiries@pop-up-pubs.com
www.pop-up-pubs.com :: www.spacial-installations.co.uk