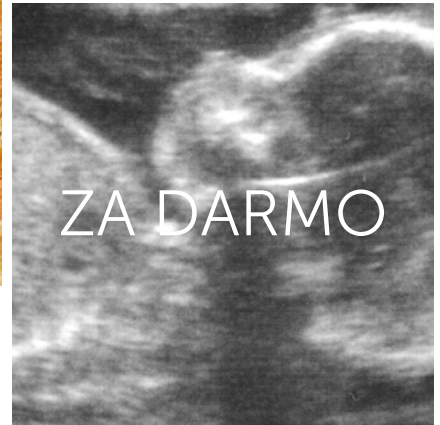
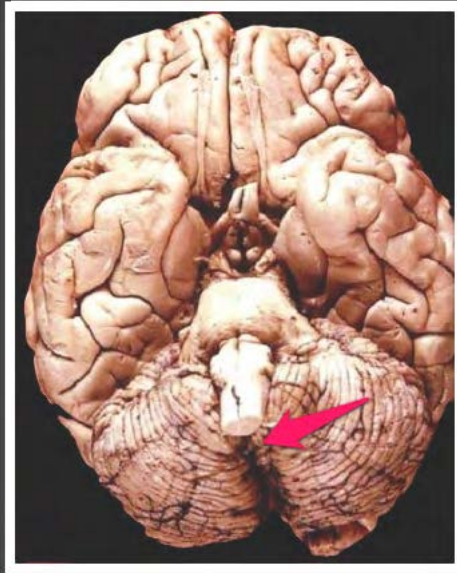




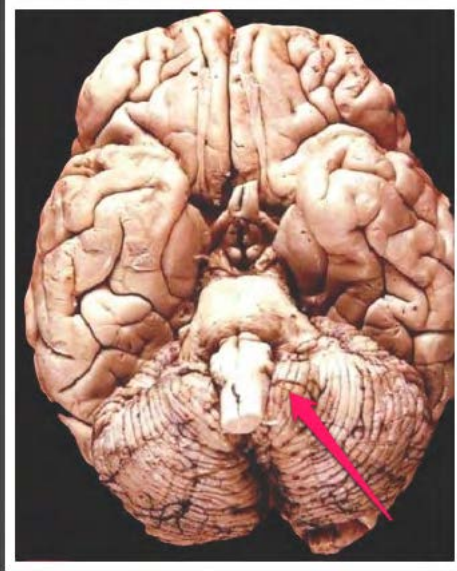
*Mózgowe szpilki.*



[www.wuzetki.pl](http://www.wuzetki.pl)



robak mózdzku (*vermis cerebelli*)



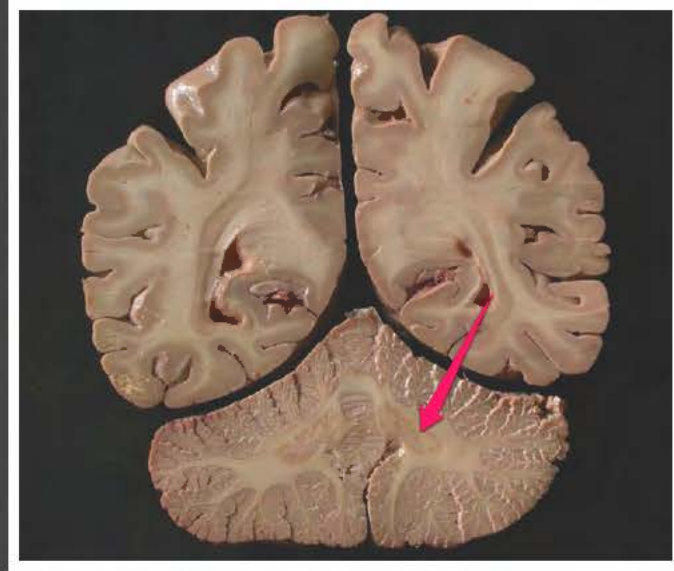
migdalek mózdzku (*tonsilla cerebelli*)



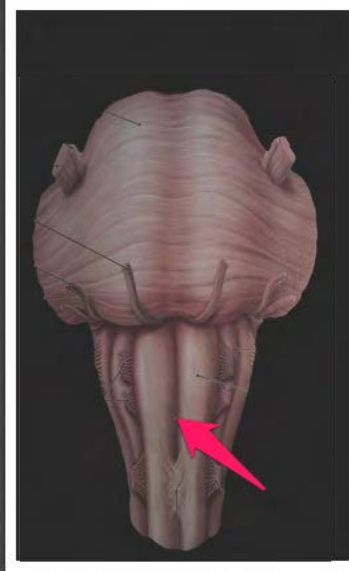
migdalek mózdzku (*tonsilla cerebelli*)



drzewo życia mózdzku (*arbor vitae cerebelli*)

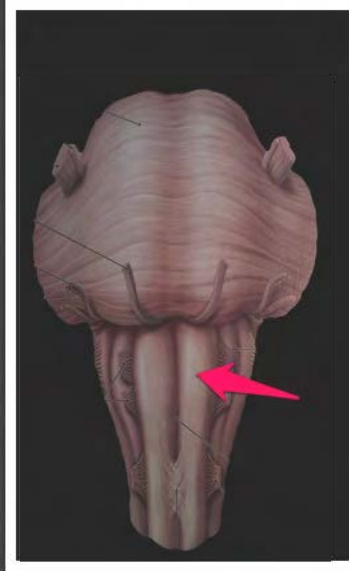


jądro zębate (*nucleus dentatus*)

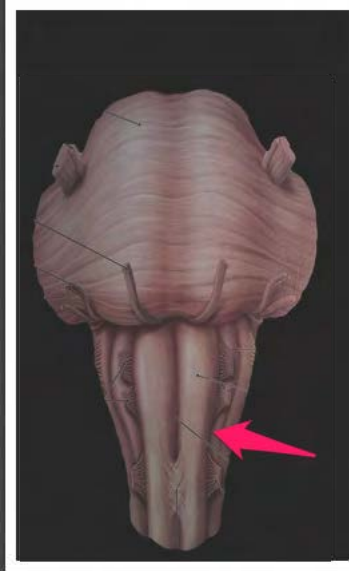


bruzda pośrodkowa przednia  
rdzenia przedłużonego (*sulcus  
medianus anterior medullae  
oblongatae*)



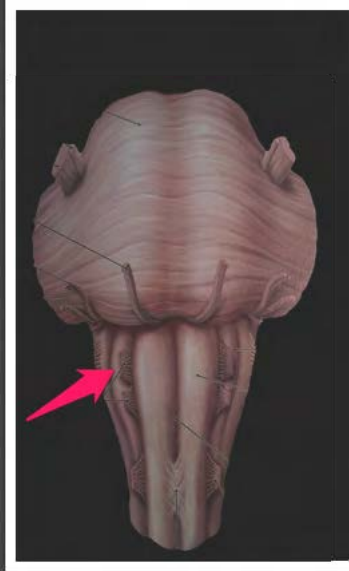


piramida rdzenia przedłużonego  
(*pyramis medullae oblongatae*)



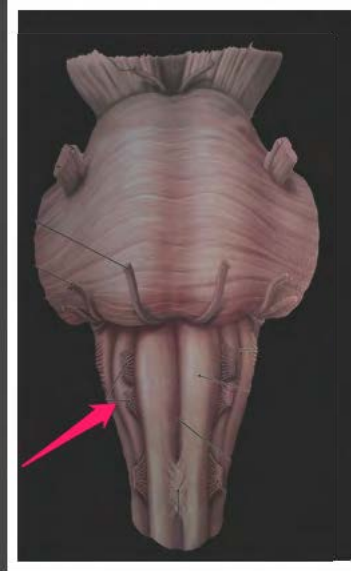
bruzda boczna przednia rdzenia  
przedłużonego (*sulcus lateralis  
anterior medullae oblongatae*)

SZPILKA

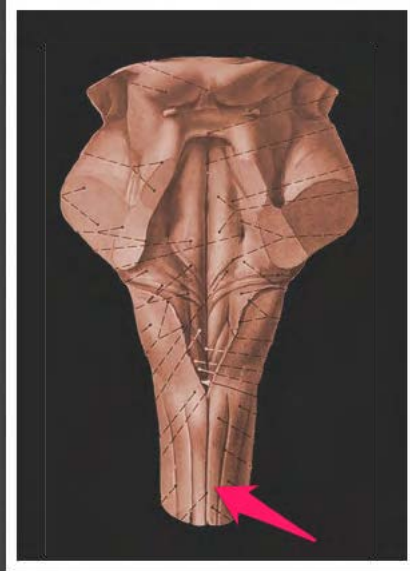


ODPOWIEDZ

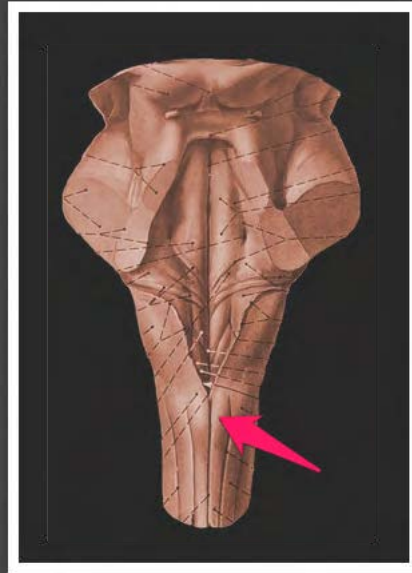
oliwka (*oliva*)



bruzda boczna tylna rdzenia  
przedłużonego (*sulcus lateralis  
posterior medullae oblongatae*)



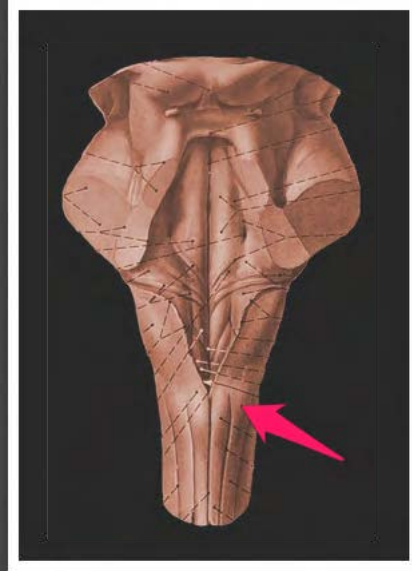
pęczek smukły (*fasciculus gracilis*)



guzek smukły (*tuberculum gracile*)



pęczek klinowaty (*fasciculus cuneatus*)

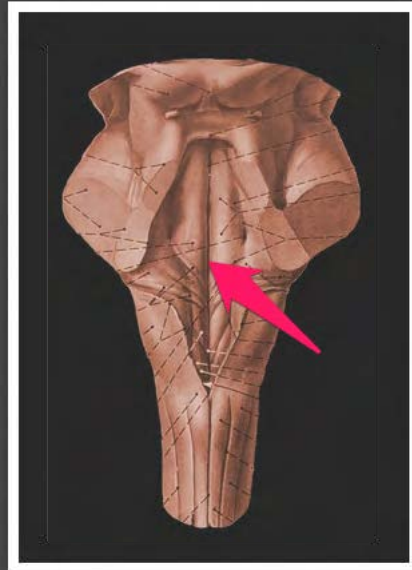


guzek klinowaty (*tuberculum  
cuneatum*)

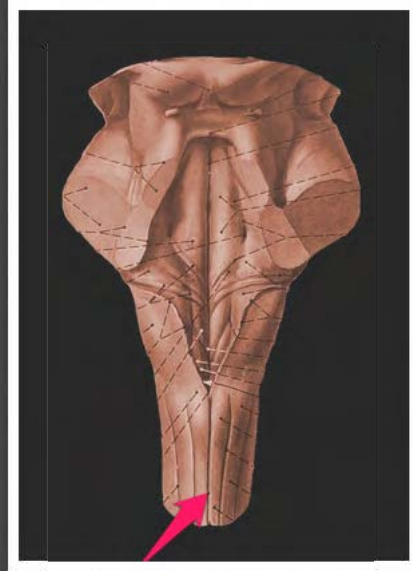




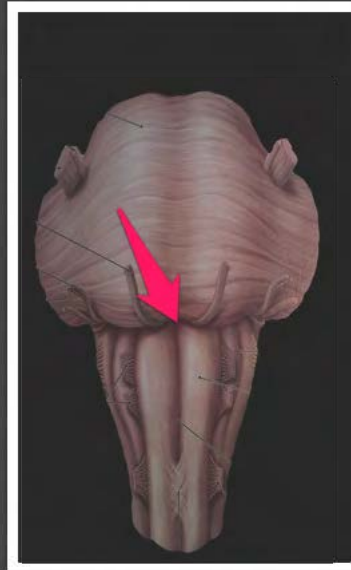
bruzda pośrodkowa tylna rdzenia  
przedłużonego (*sulcus intermedius  
posterior medullae oblongatae*)



bruzda pośrodkowa dołu  
równoległobocznego (*sulcus  
medianus fossae rhomboideae*)



bruzda pośrodkowa tylna rdzenia przedłużonego (*sulcus medianus posterior medullae oblongatae*)



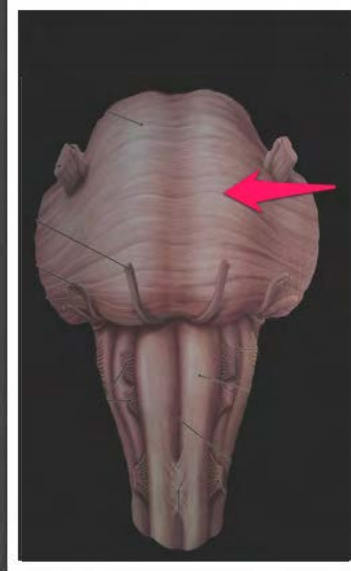
otwór ślepy rdzenia przedłużonego  
(*foramen cecum medullae  
oblongatae*)



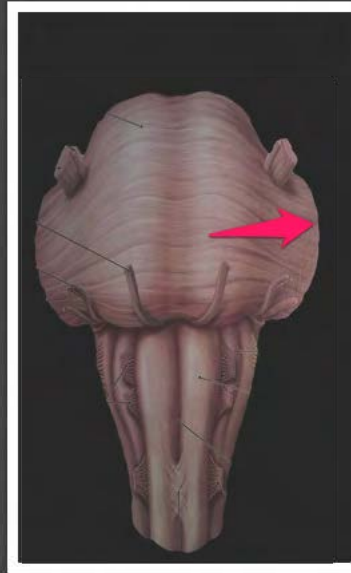
bruzda opuszkowo-mostowa (*sulcus  
bulbopontinus*)



bruzda podstawna mostu (*sulcus basilaris pontis*)

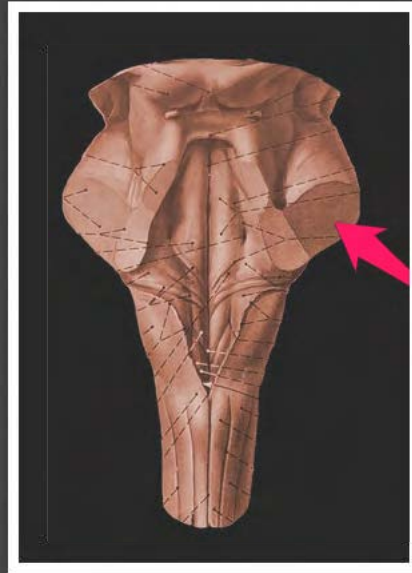


wyniosłość piramidowa (*eminencia  
pyramidalis*)

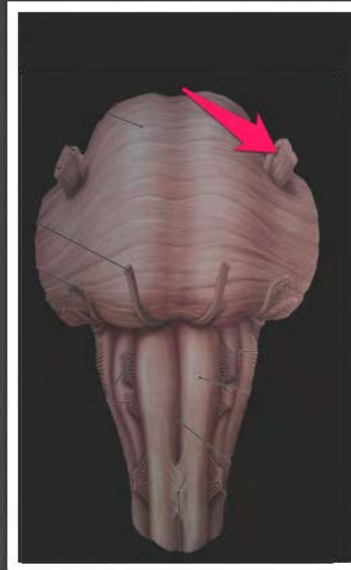


konar środkowy mózdzku  
(*pedunculus cerebellaris medius*)

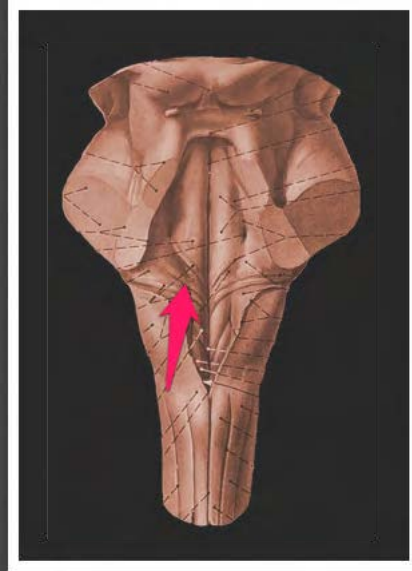




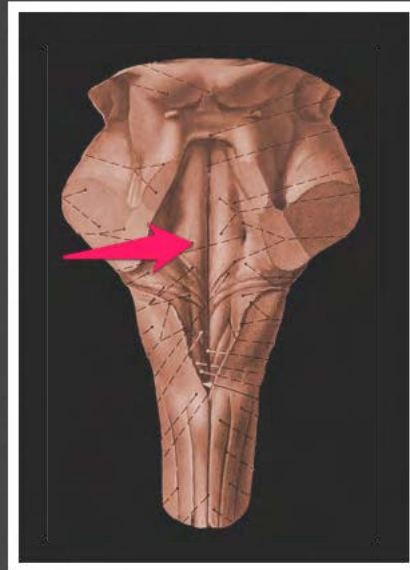
konar środkowy mózdzku  
(*pedunculus cerebellaris medius*)



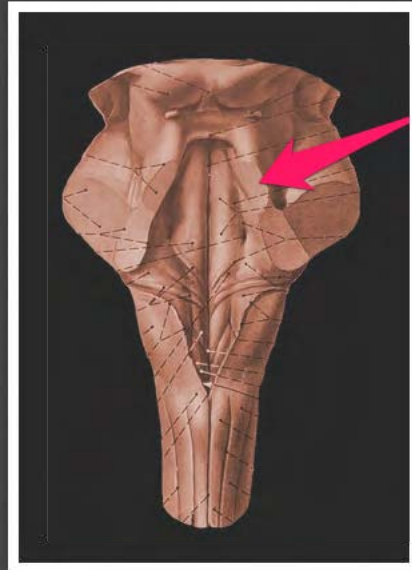
nerw trójdzielny (*nervus trigeminus*)



prążki słuchowe (*striae acusticae*)



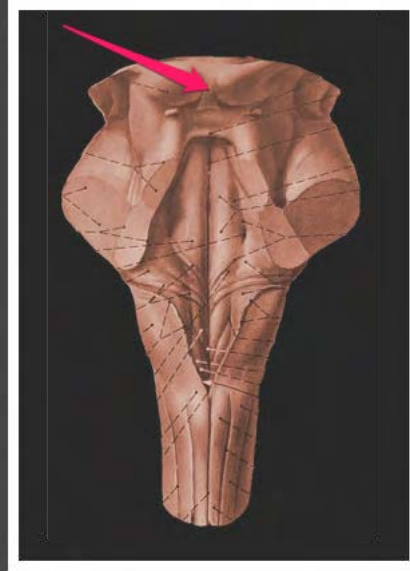
wzgórek twarzowy (*colliculus  
facialis*)



konar górny mózdzku (*pedunculus cerebellaris superior*)



zastona rdzeniowa górna (*velum medullare superius*)



węzidełko zastony rdzeniowej  
górnjej (*frenulum velum medullae  
superius*)

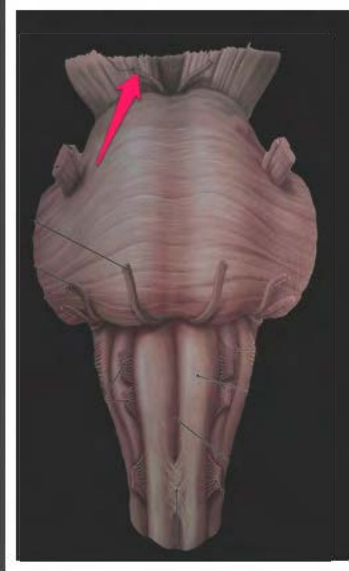


odnoga mózgu (*crus cerebri*)

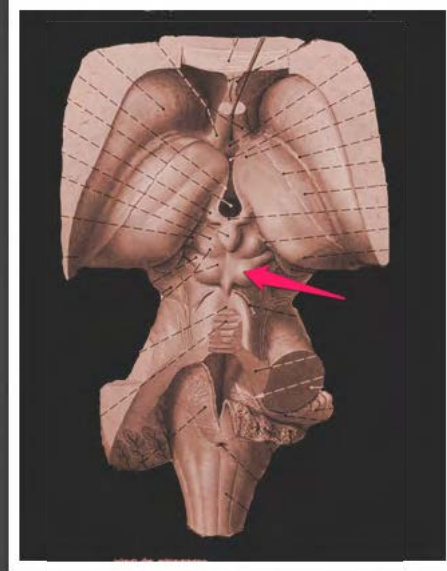




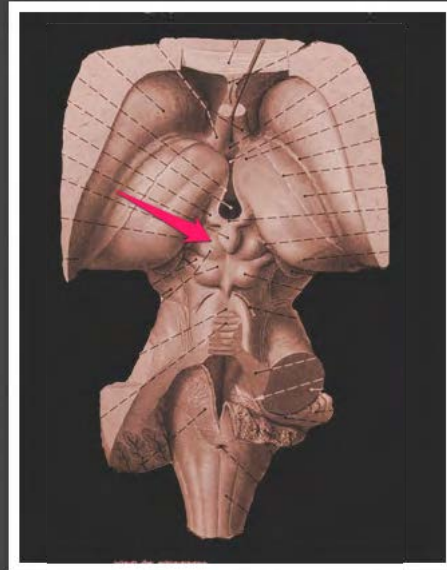
dół międzykonarowy (*fossa interpeduncularis*)



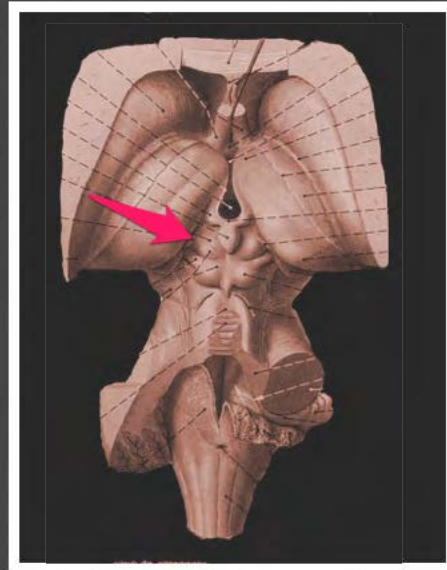
nerw okoruchowy (*nervus  
oculomotorius*)



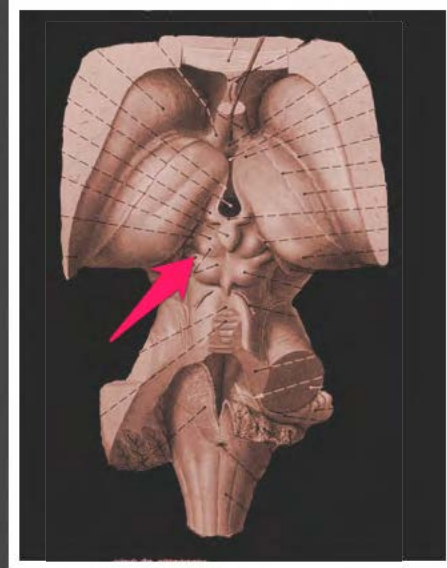
wzgórek dolny (*colliculus inferior*)



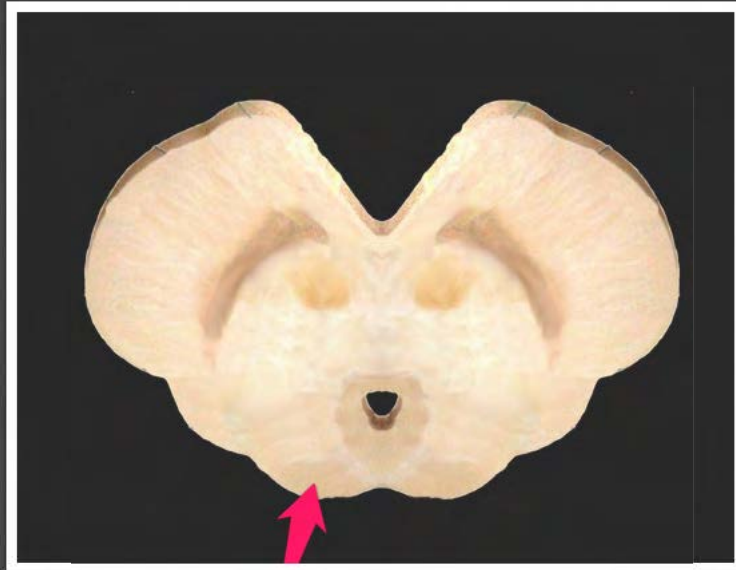
wzgórek górny (*colliculus superior*)



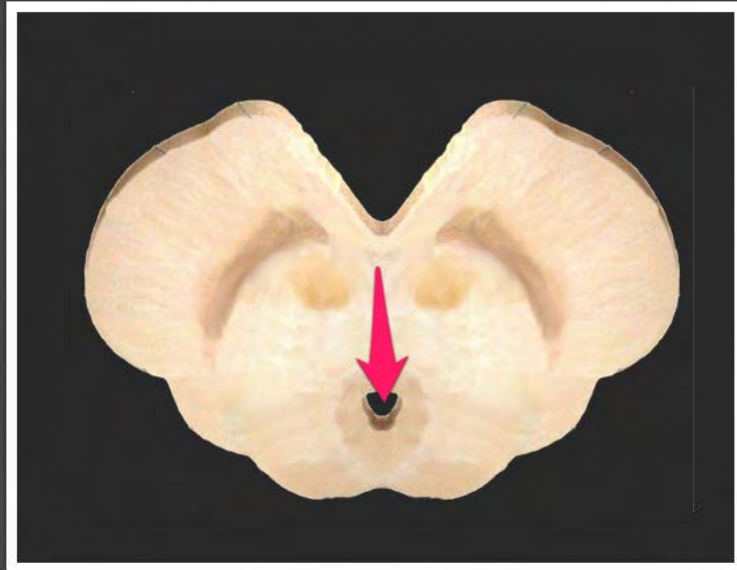
ramię wzgórka górnego (*brachium colliculi superioris*)



ramię wzgórka dolnego (*brachium colliculi inferioris*)

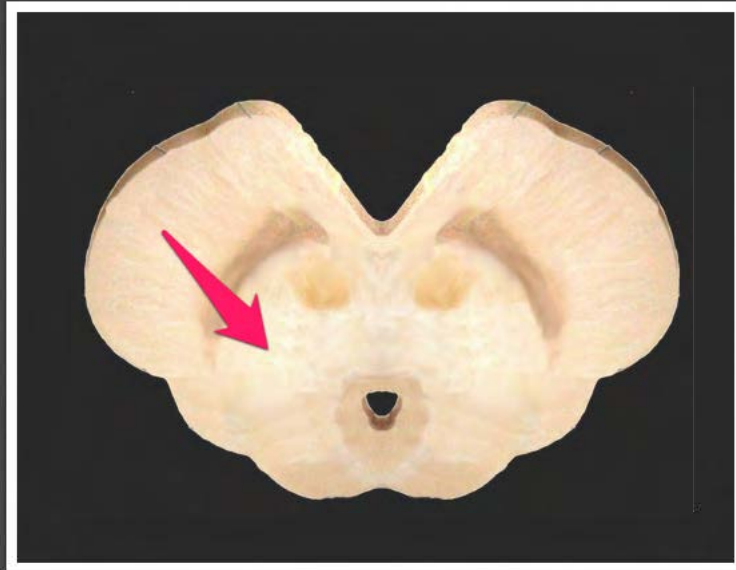


pokrywa śródmózgowia (*tectum mesencephali*)

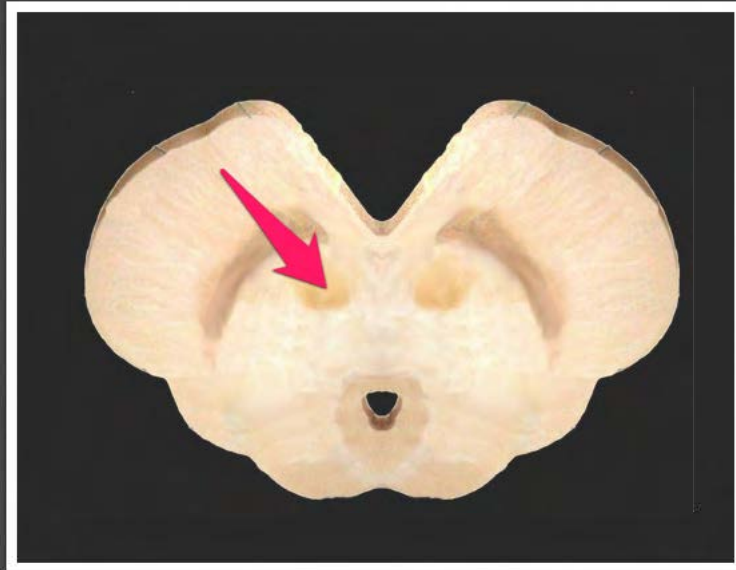


wodociąg mózgu (*aqueductus cerebri*)

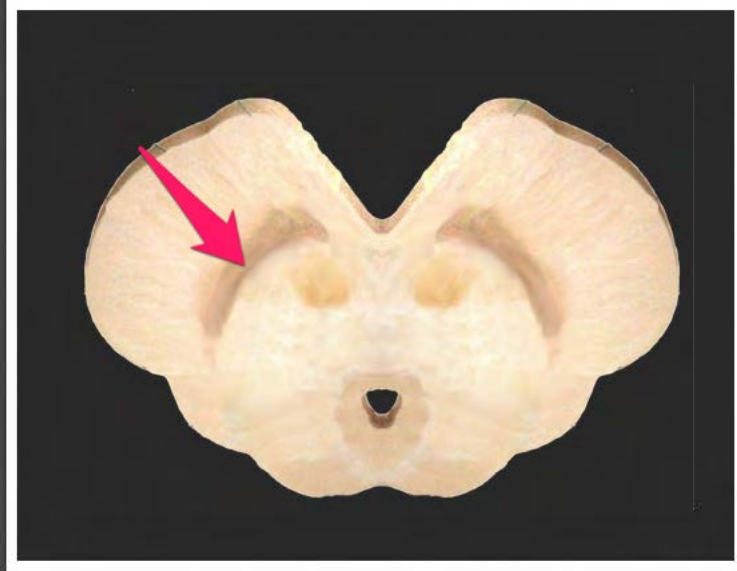




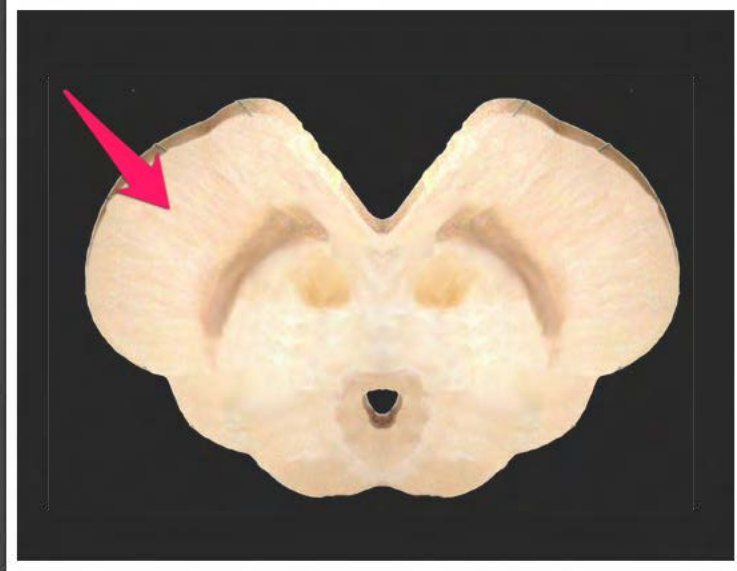
nakrywka śródmózgowia  
(*tegmentum mesencephali*)



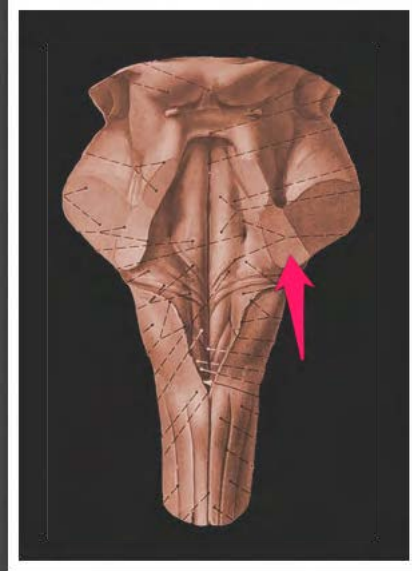
jądro czerwienne (*nucleus ruber*)



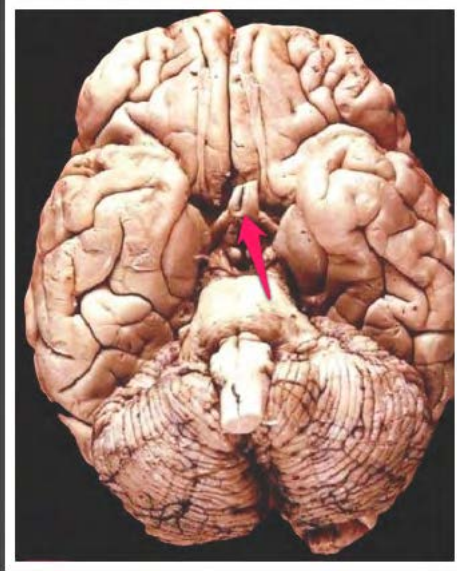
istota czarna (*substantia nigra*)



odnoga mózgu (*crus cerebri*)



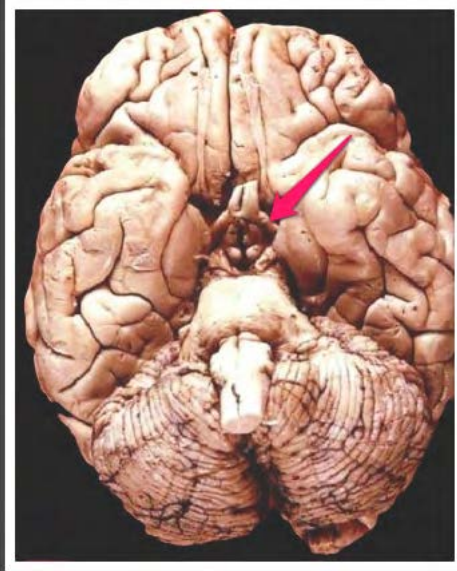
konar dolny mózdzku (*pedunculus cerebellaris inferior*)



skrzyżowanie wzrokowe (*chiasma  
opticum*)



nerw wzrokowy (*nervus opticus*)

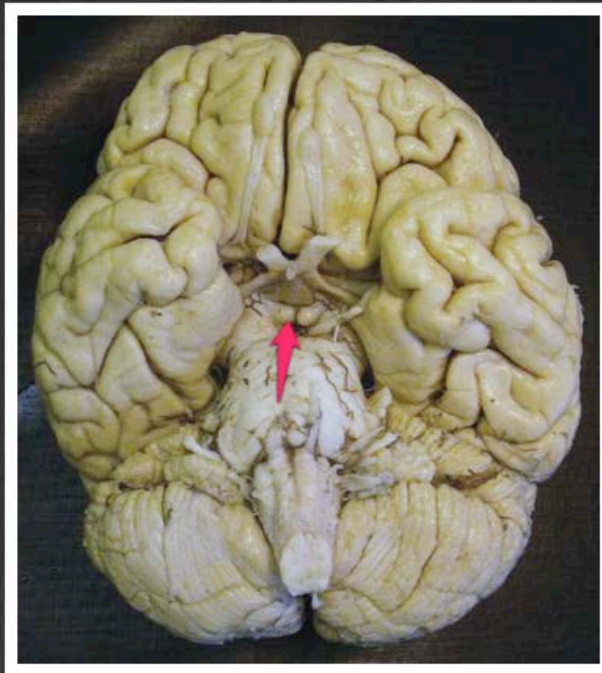


pasmo wzrokowe (*tractus opticus*)

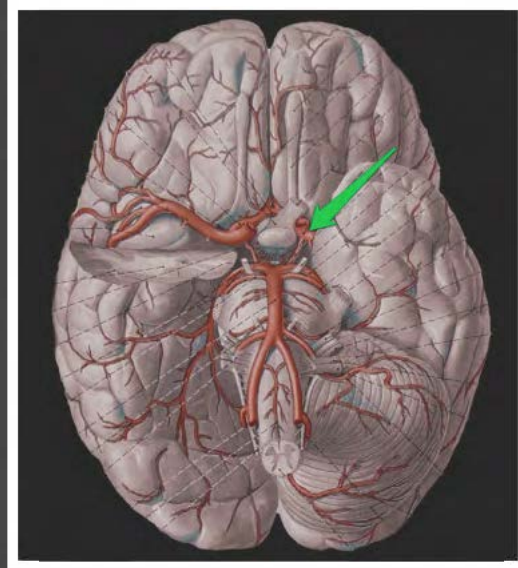




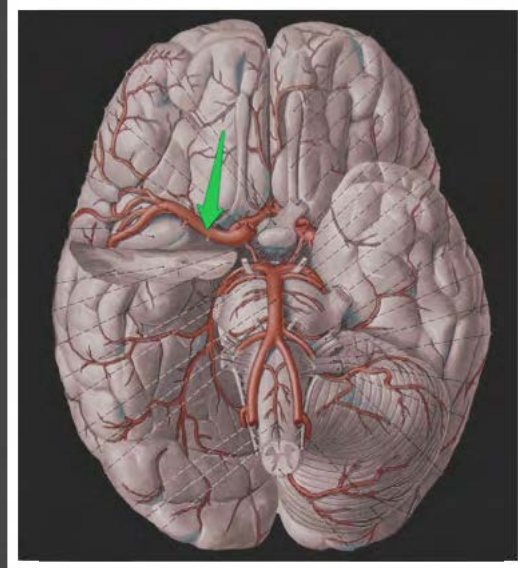
guz popielaty (*tuber cinereum*)



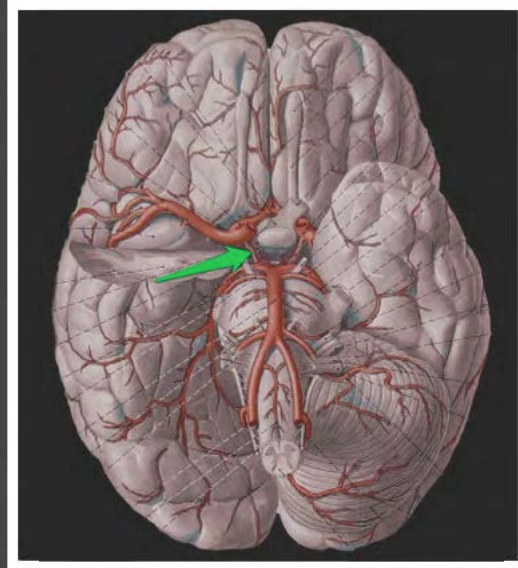
ciało suteczkowate (*corpus  
mamillare*)



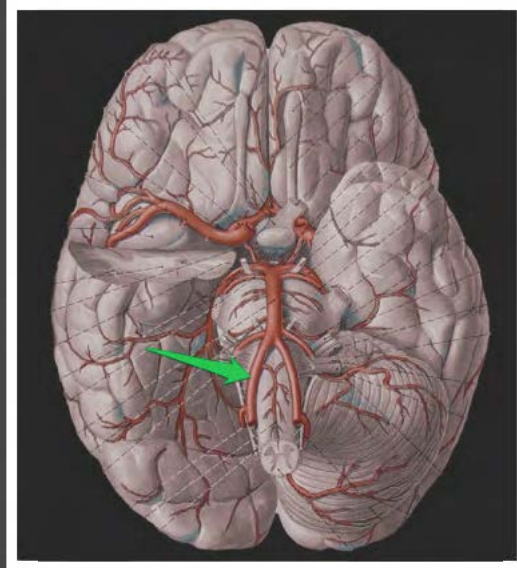
tętnica szyjna wewnętrzna (*arteria carotis interna*)



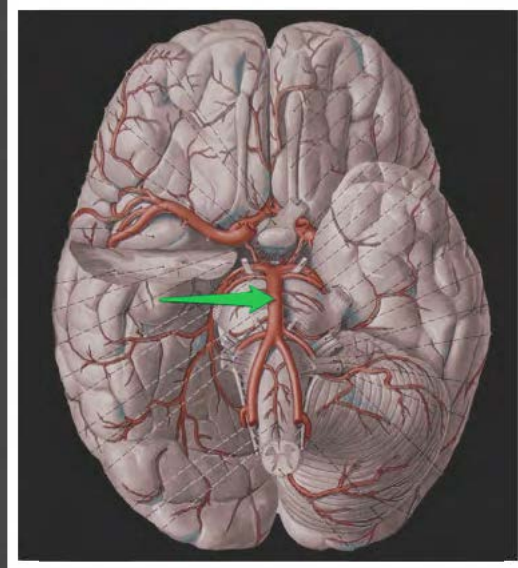
tętnica środkowa mózgu (*arteria cerebri media*)



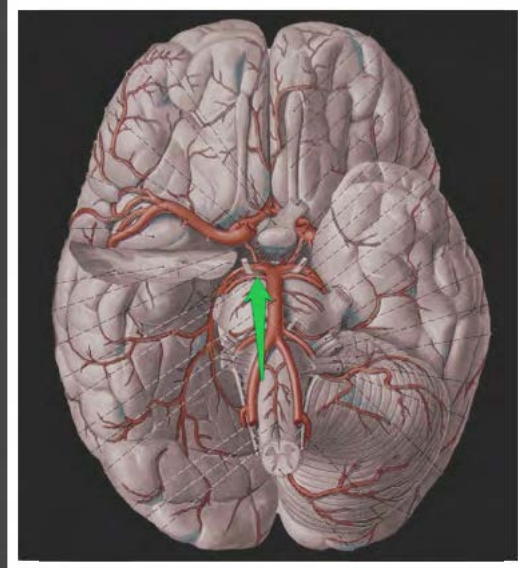
tętnica łącząca tylna (*arteria communicans posterior*)



tętnica kręgową (*arteria vertebralis*)

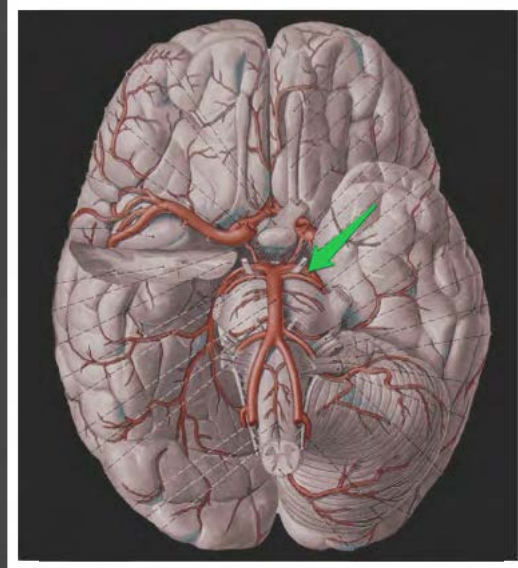


tętnica podstawna (*arteria basilaris*)

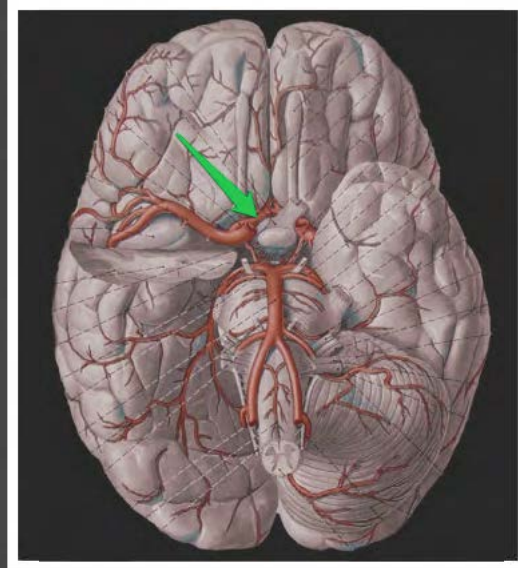


tętnica górna mózdzku (*arteria superior cerebelli*)

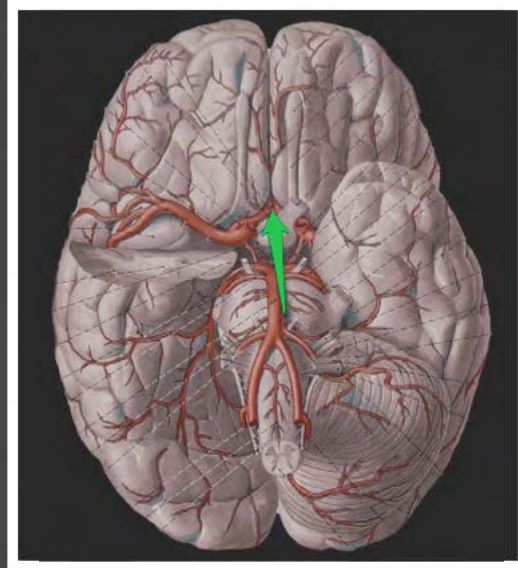




tętnica tylna mózgu (*arteria cerebri posterior*)



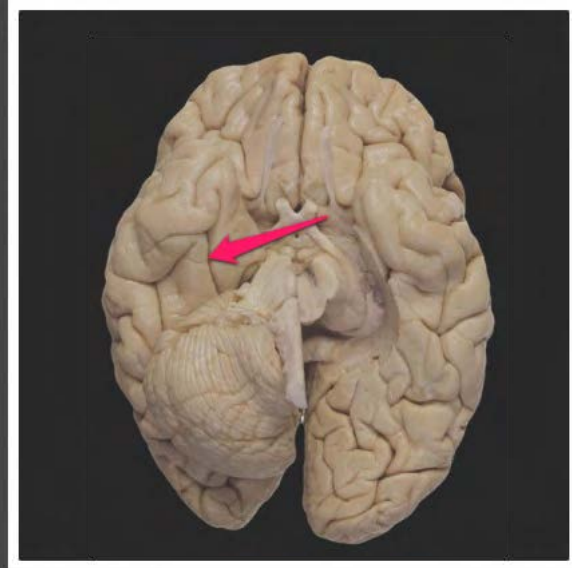
tętnica przednia mózgu (*arteria cerebri anterior*)



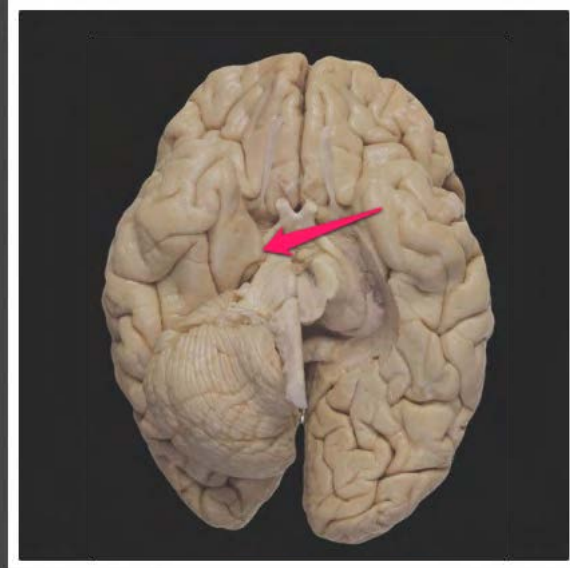
tętnica łącząca przednia (*arteria communicans anterior*)



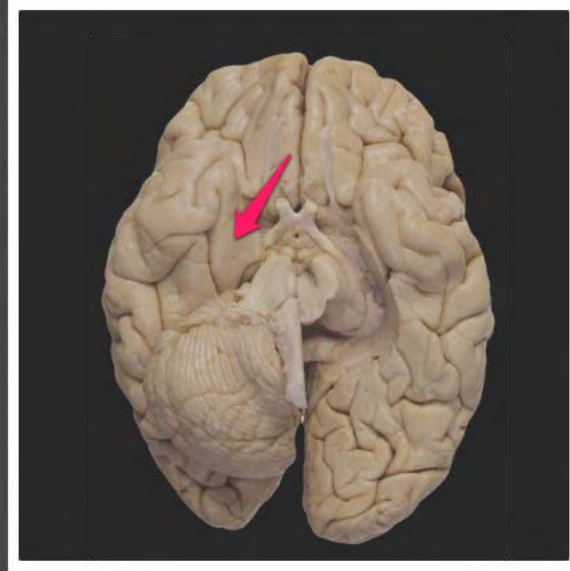
bruzda hipokampa (*sulcus hippocampi*)



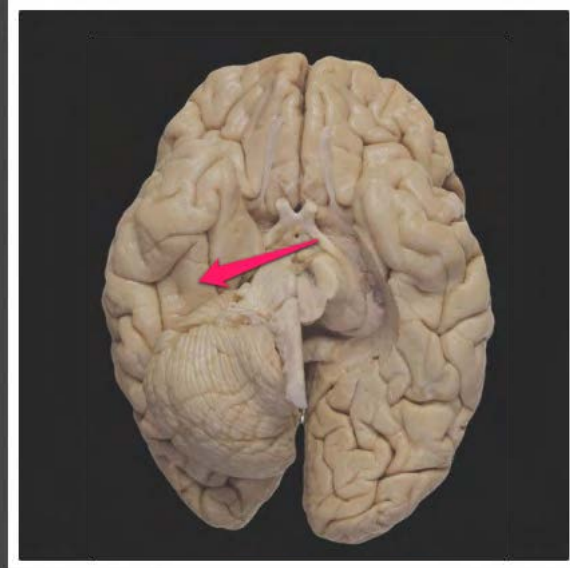
bruzda poboczna (*sulcus collateralis*)



hak zakrętu przyhipokampowego  
(*uncus gyri parahippocampali*)



zakręt przyhipokampowy (*gyrus parahippocampalis*)

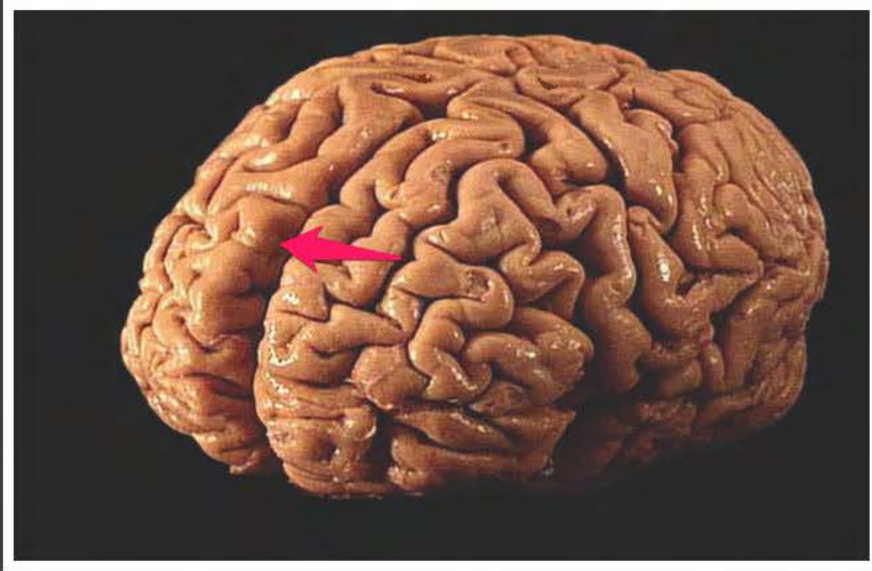


zakręt potyliczno-skroniowy  
przyśrodkowy (*gyrus  
occipitotemporalis medialis*)

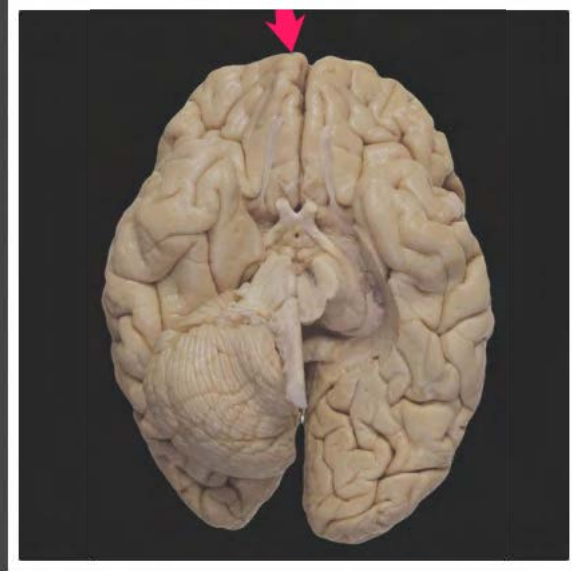




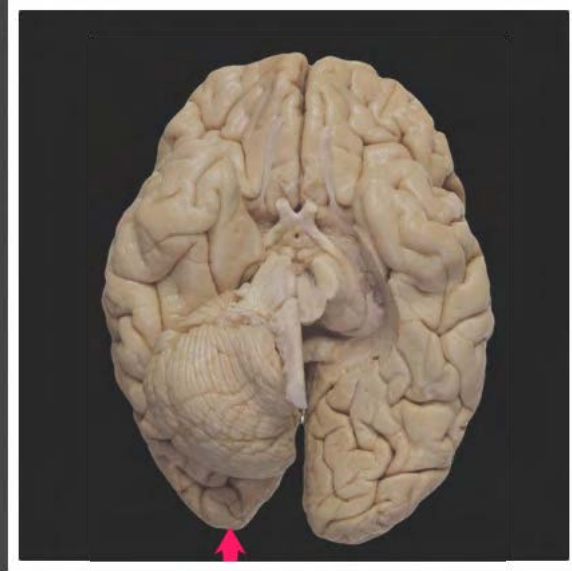
zakręt potyliczno-skroniowy boczny  
(*gyrus occipitotemporalis lateralis*)



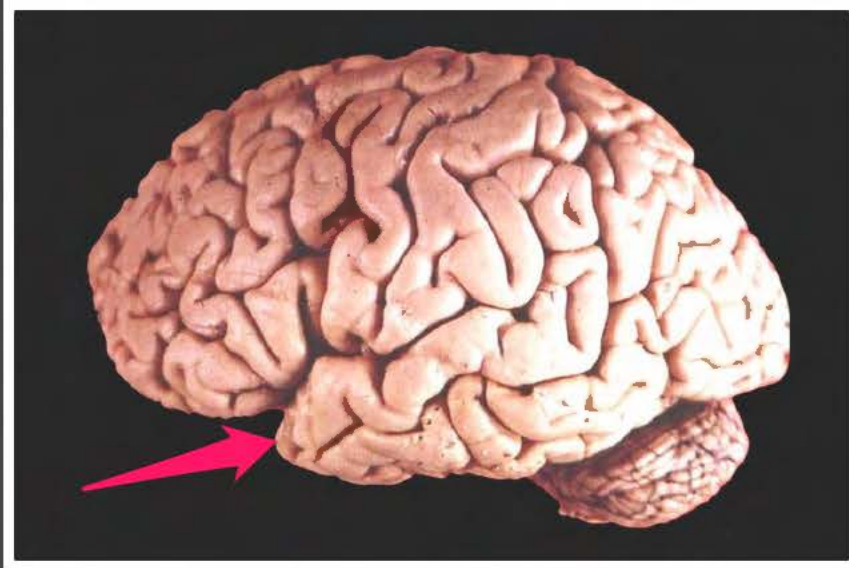
zakręt czołowy przyśrodkowy (*gyrus frontalis medialis*)



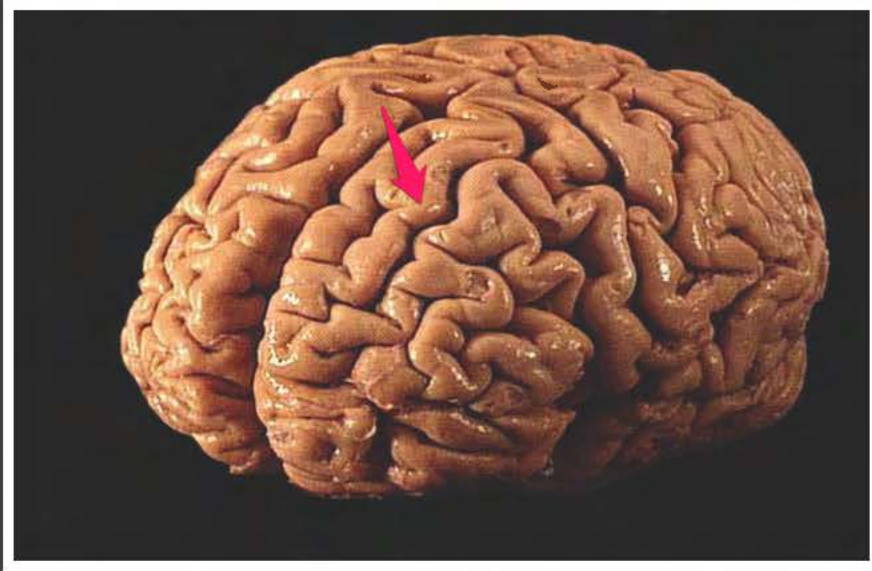
biegun czołowy (*polus frontalis*)



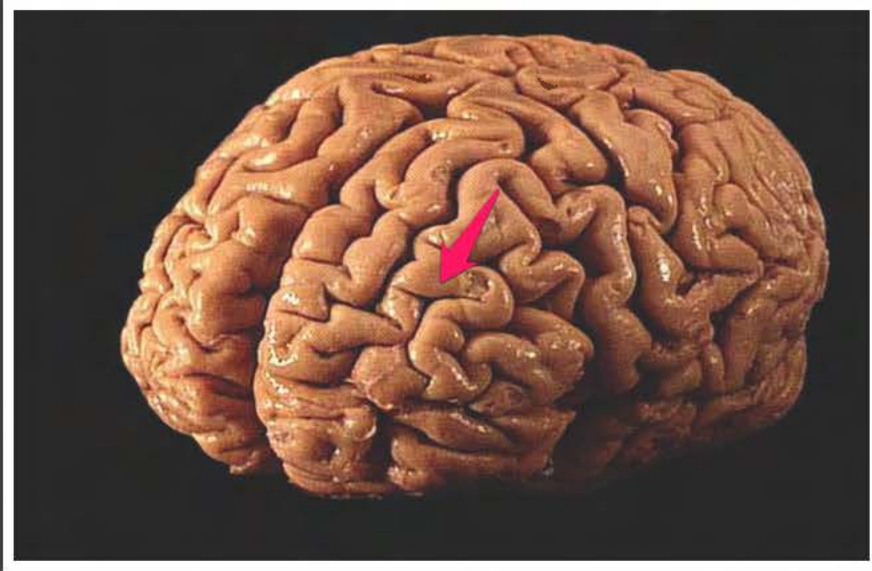
biegun potyliczny (*polus occipitalis*)



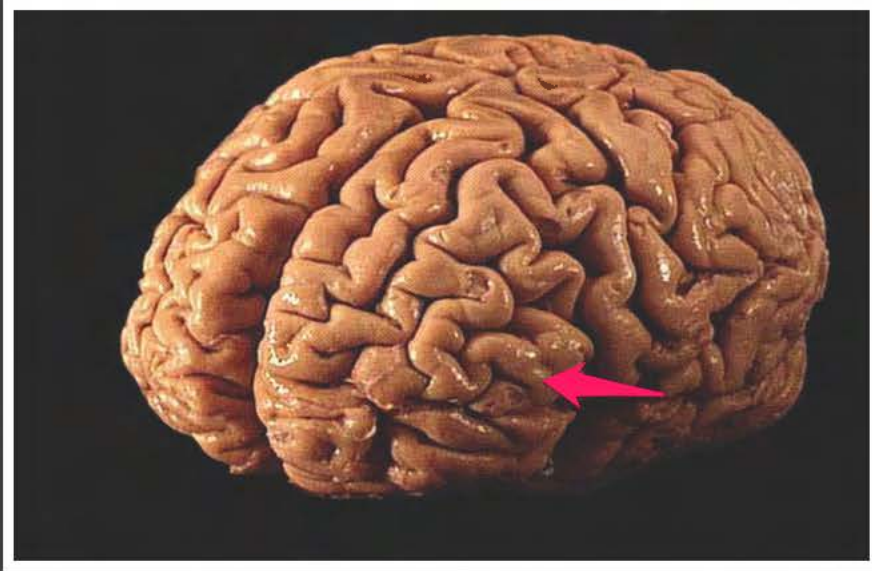
biegun skroniowy (*polus temporalis*)



zakręt czołowy górny (*gyrus frontalis superior*)

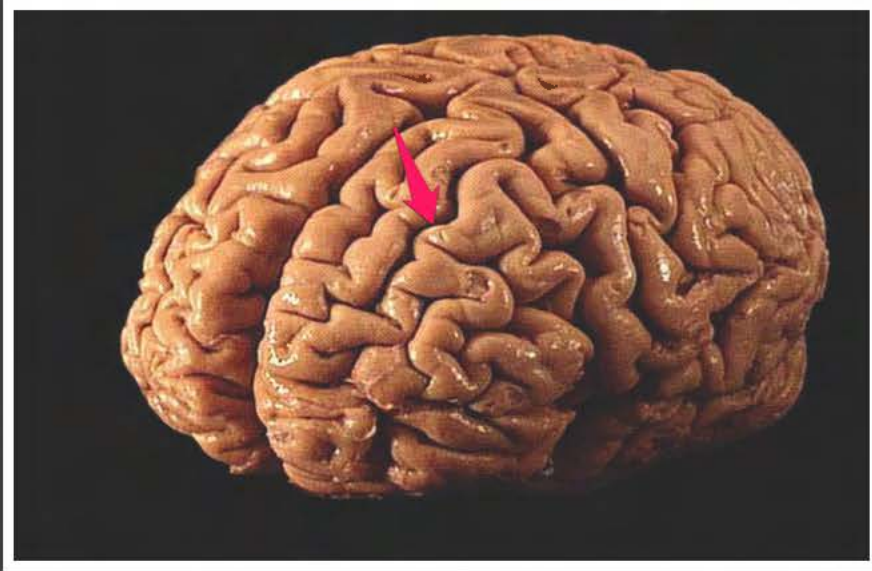


zakręt czołowy środkowy (*gyrus frontalis medius*)

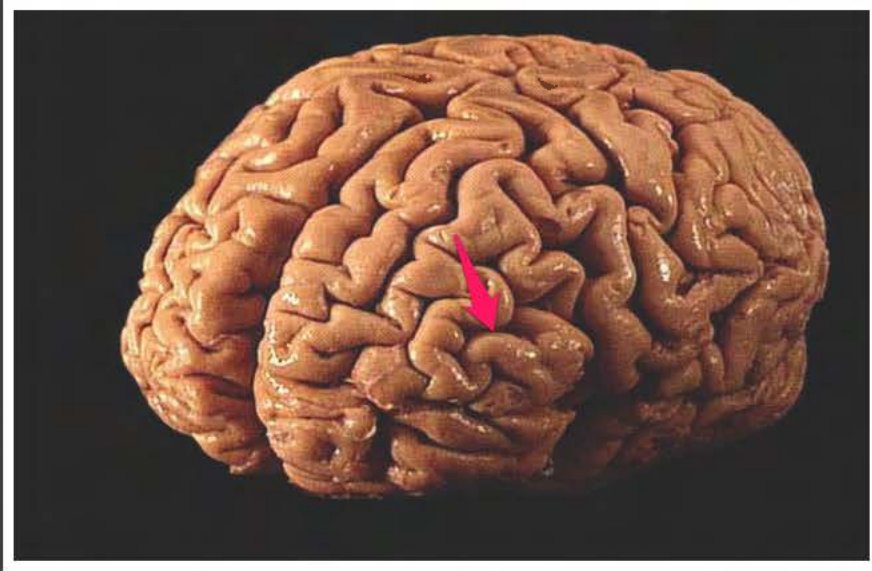


zakręt czołowy dolny (*gyrus frontalis inferior*)

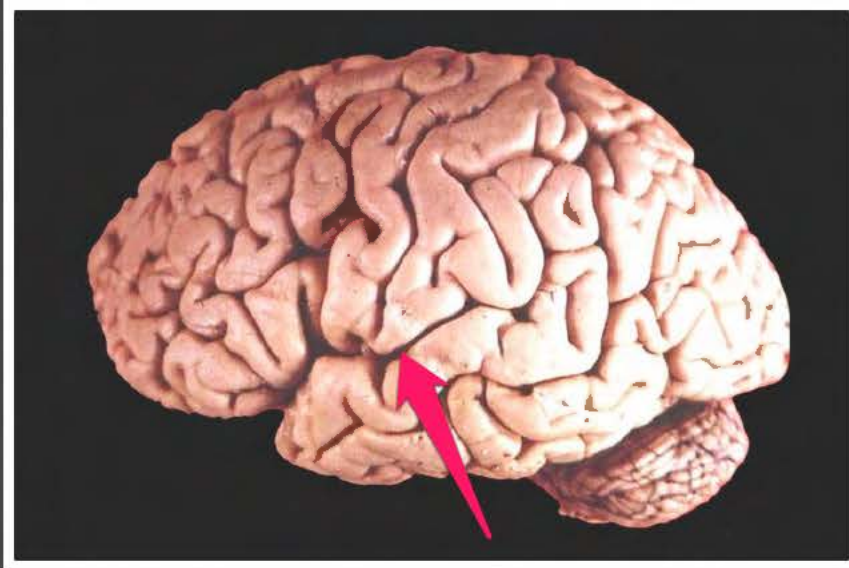




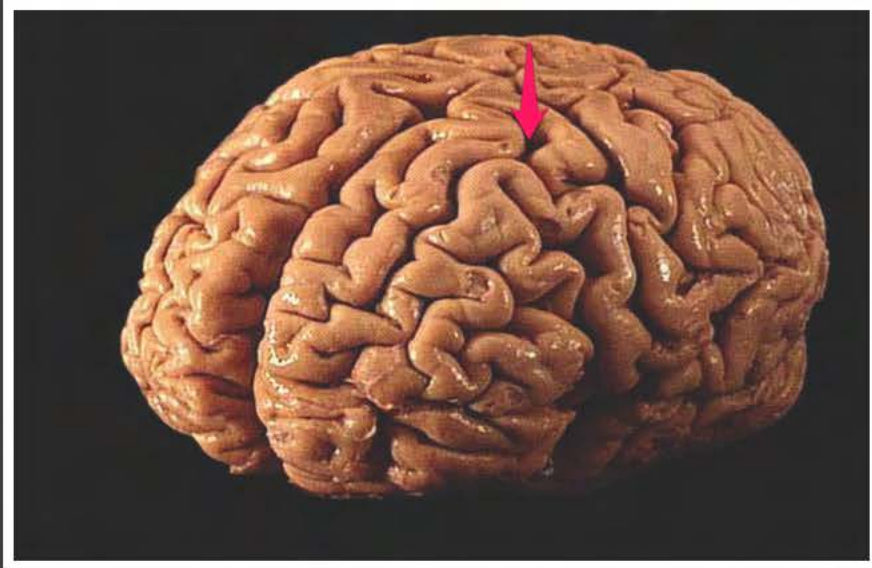
bruzda czołowa górna (*sulcus frontalis superior*)



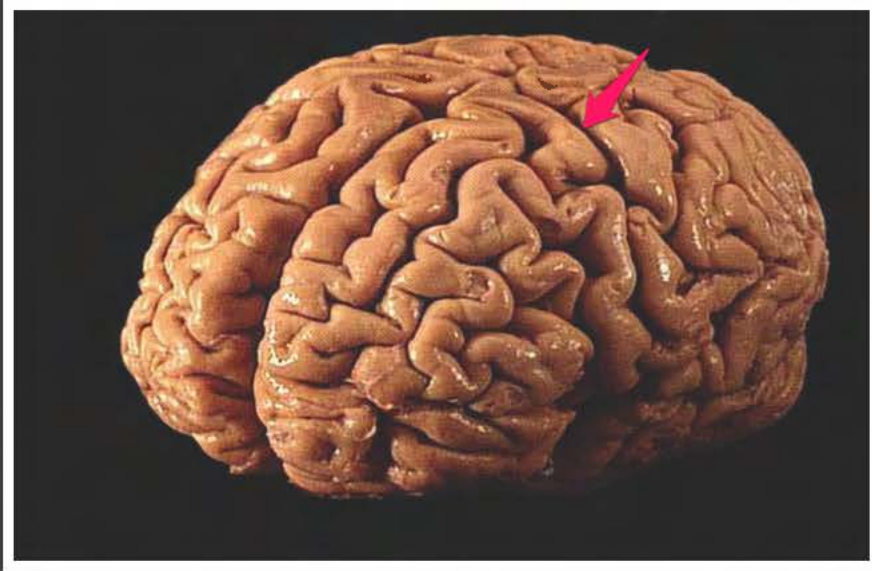
bruzda czołowa dolna (*sulcus frontalis inferior*)



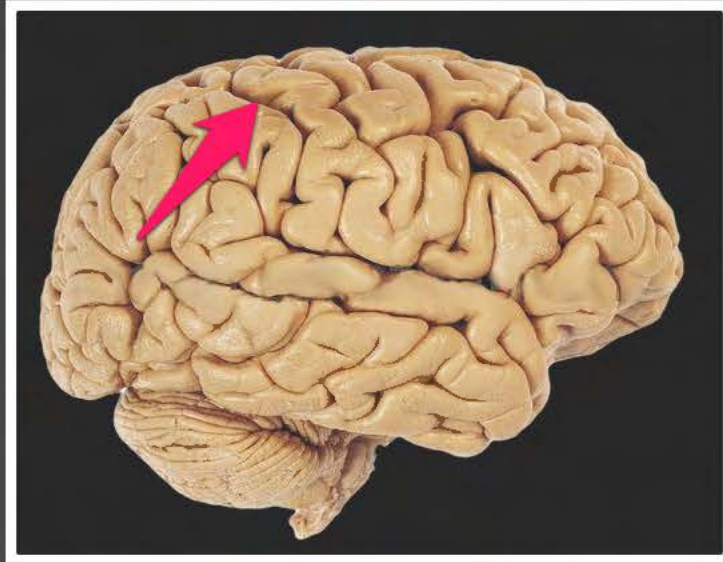
bruzda boczna mózgu (*sulcus  
lateralis cerebri*)



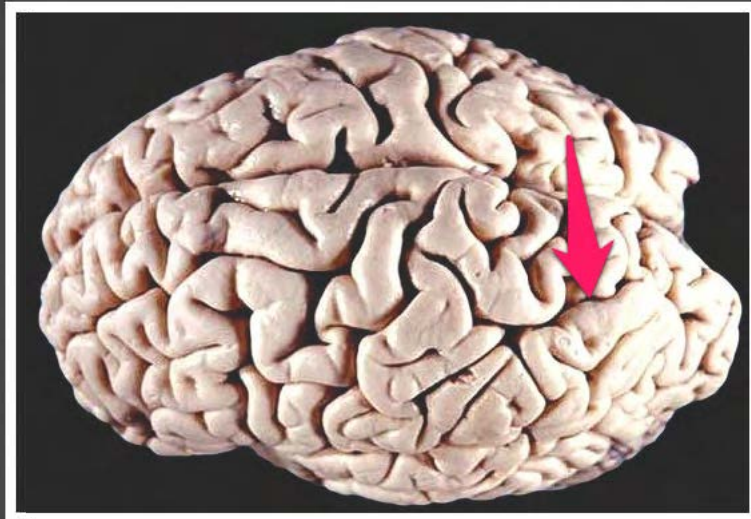
bruzda przedśrodkowa (*sulcus  
precentralis*)



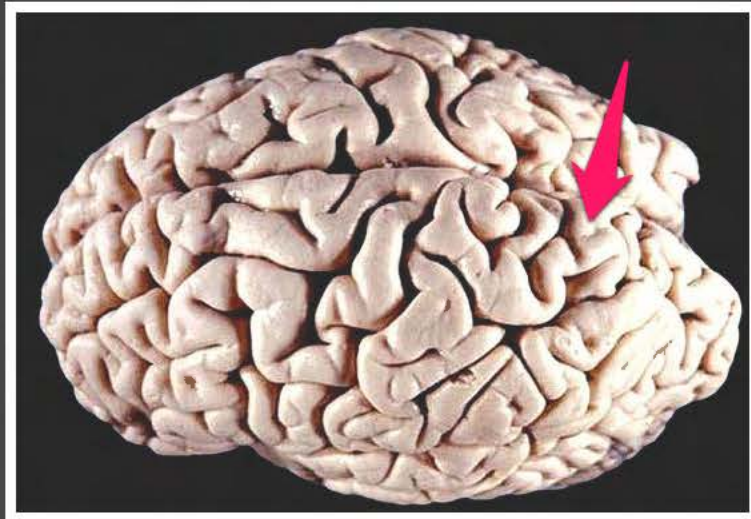
bruzda środkowa (*sulcus centralis*)



bruzda zaśrodkowa (*sulcus postcentralis*)

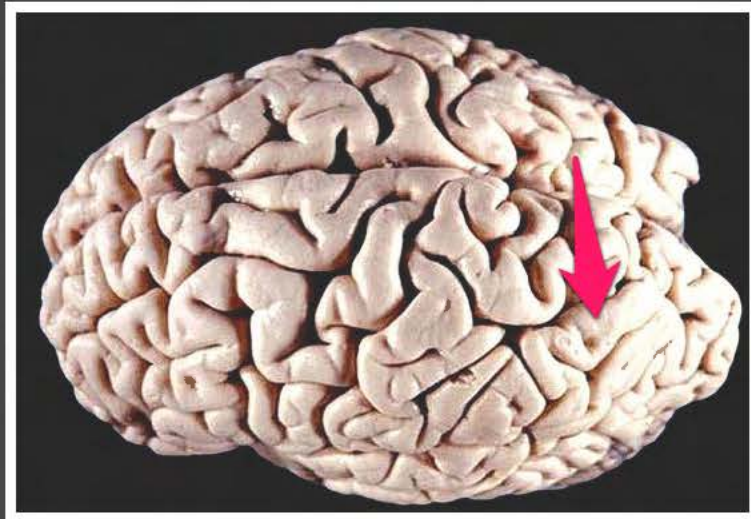


bruzda śródcieniowa (*sulcus intraparietalis*)

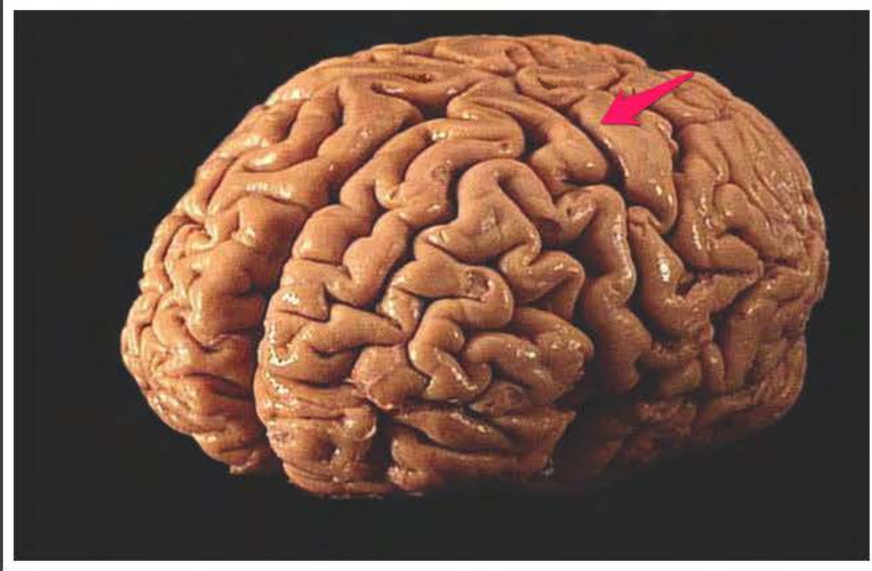


płatki ciemieniowy górny (*lobulus parietalis superior*)

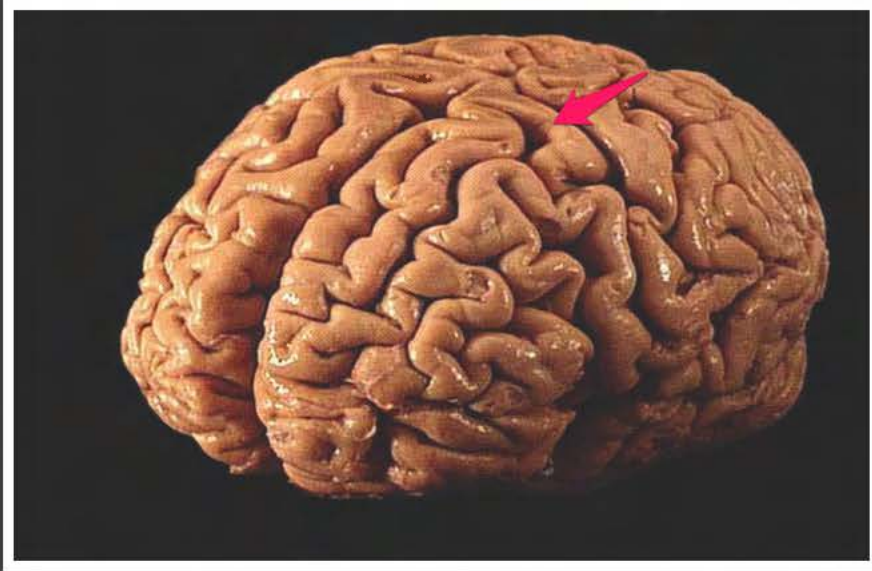




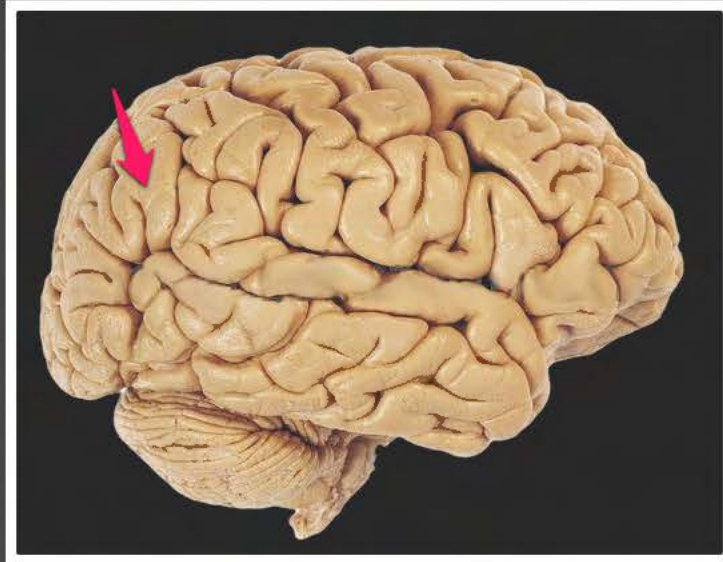
płacik ciemieniowy dolny (*lobulus parietalis inferior*)



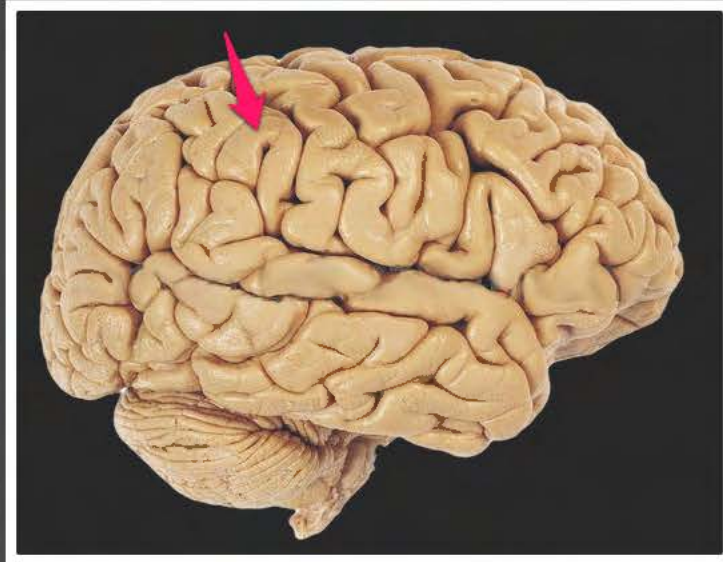
zakręt zaśrodkowy (*gyrus  
postcentralis*)



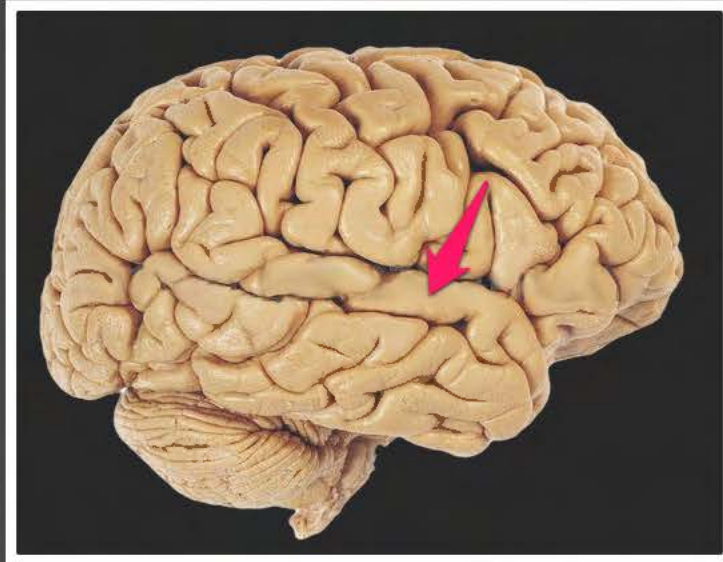
zakręt przedśrodkowy (*gyrus precentralis*)



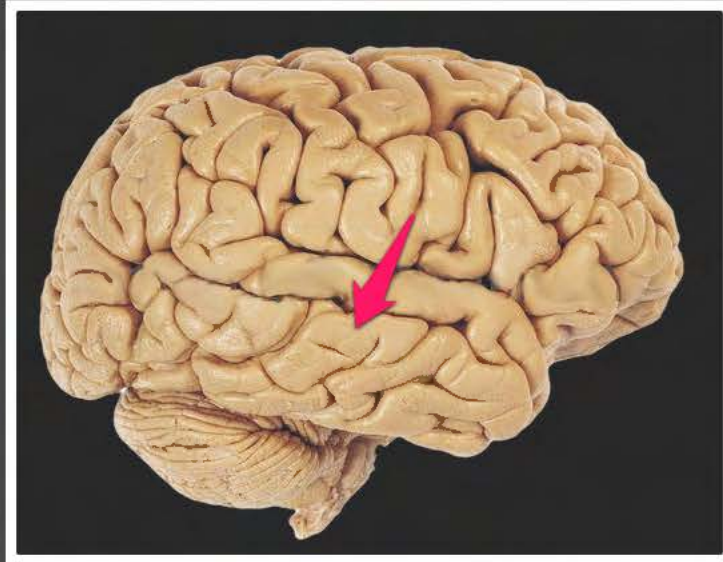
zakręt kątowy (*gyrus angularis*)



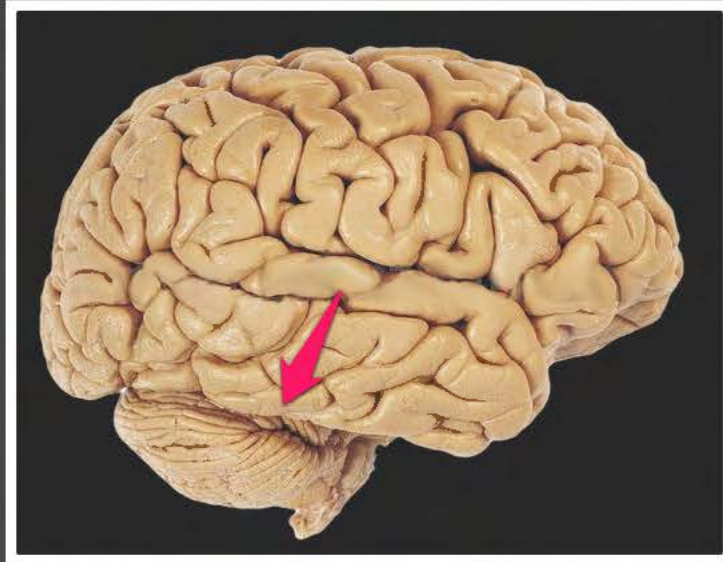
zakręt nadbrzeżny (*gyrus  
supramarginalis*)



zakręt skroniowy górny (*gyrus temporalis superior*)

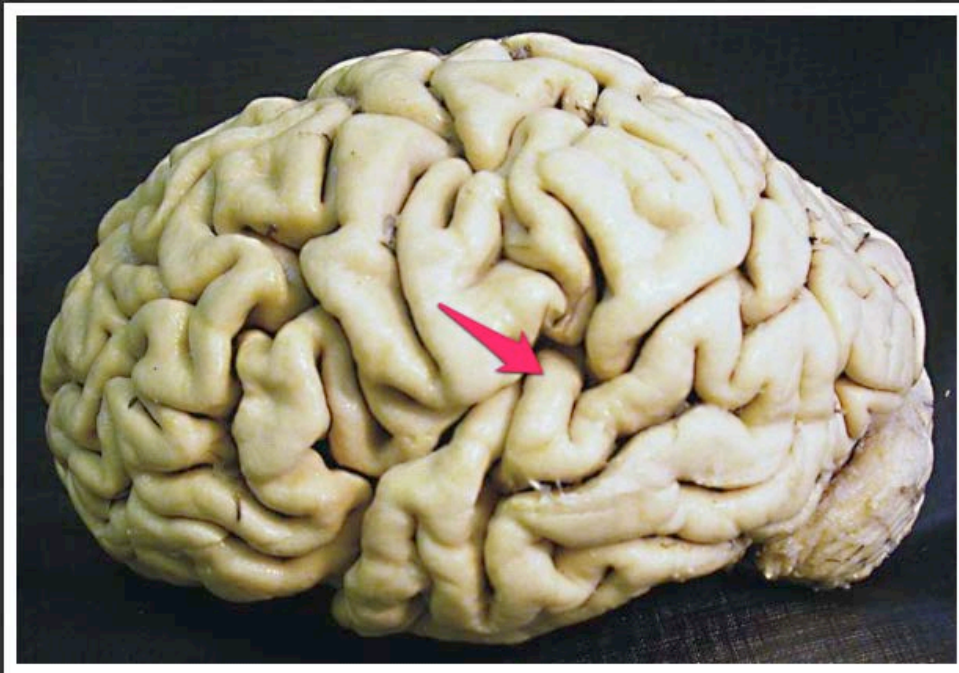


zakręt skroniowy środkowy (*gyrus temporalis medius*)

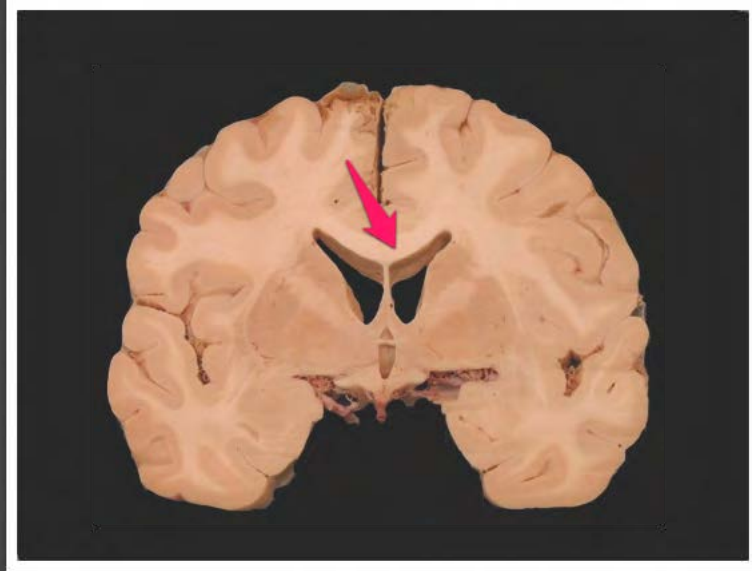


zakręt skroniowy dolny (*gyrus temporalis inferior*)

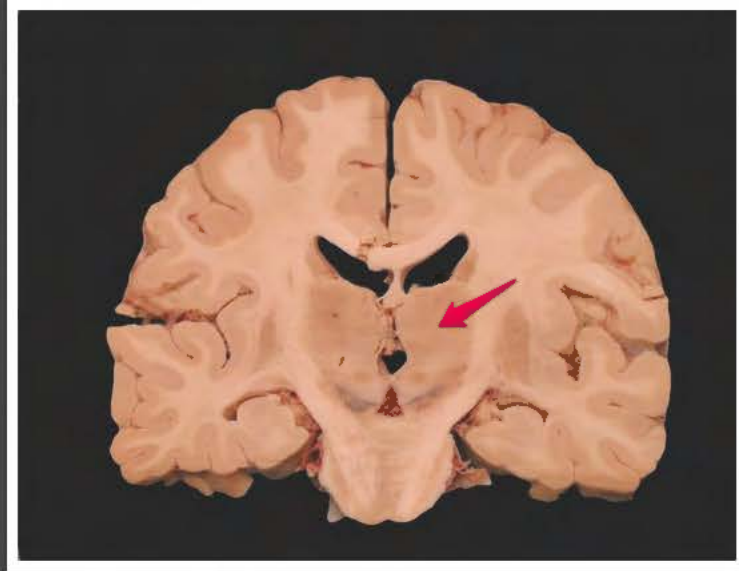




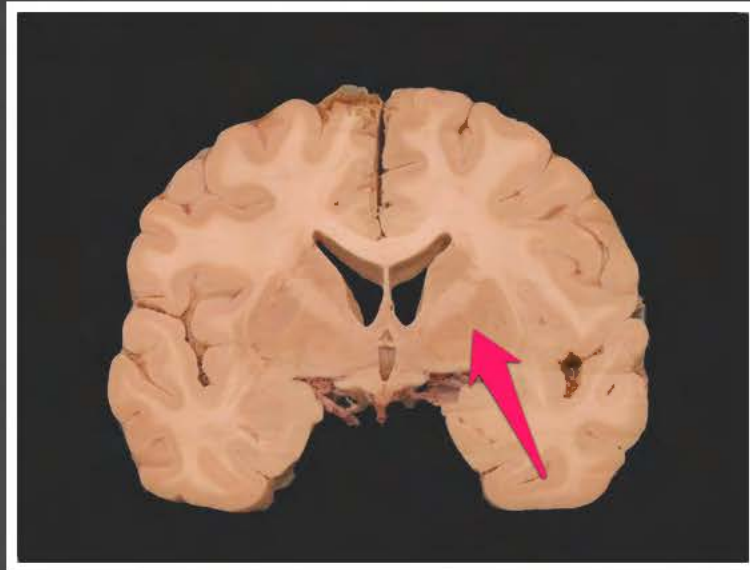
zakręty skroniowe poprzeczne (*gyri  
temporales transversi*)



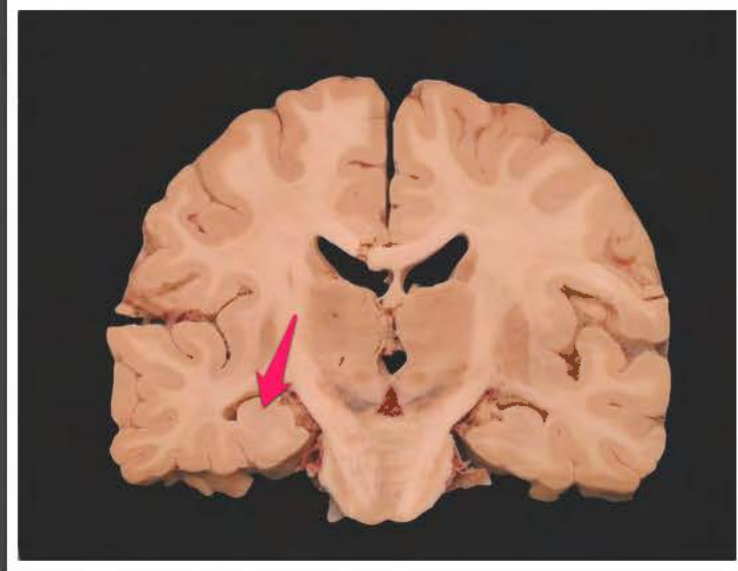
ciało modzelowate (*corpus callosum*)



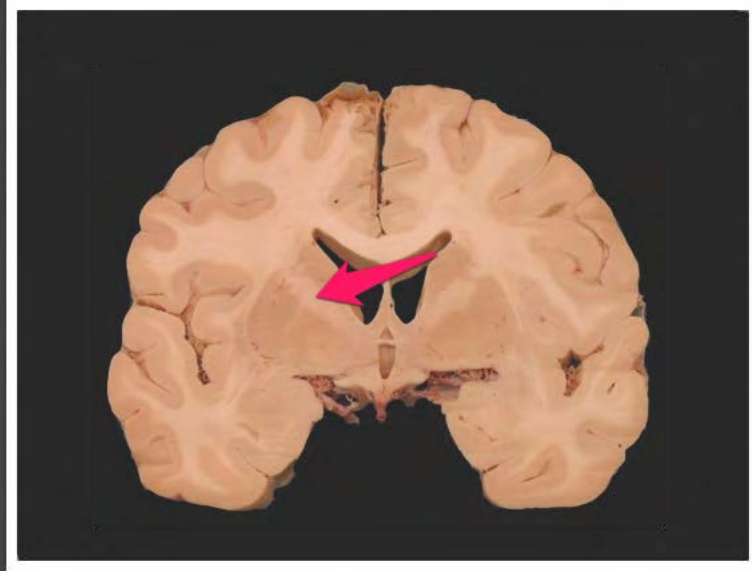
wzgórze (*thalamus*)



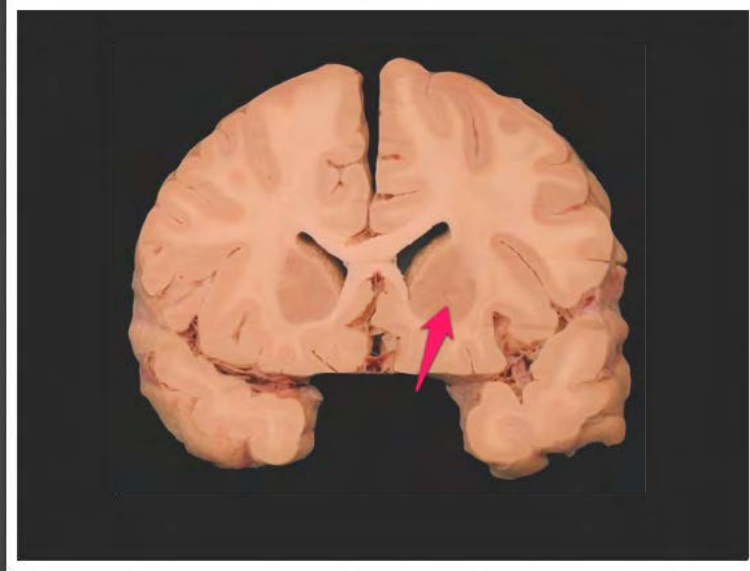
jądro soczewkowate (*nucleus  
lentiformis*)



hipokamp (*hippocampus*)



torebka wewnętrzna (*capsula interna*)

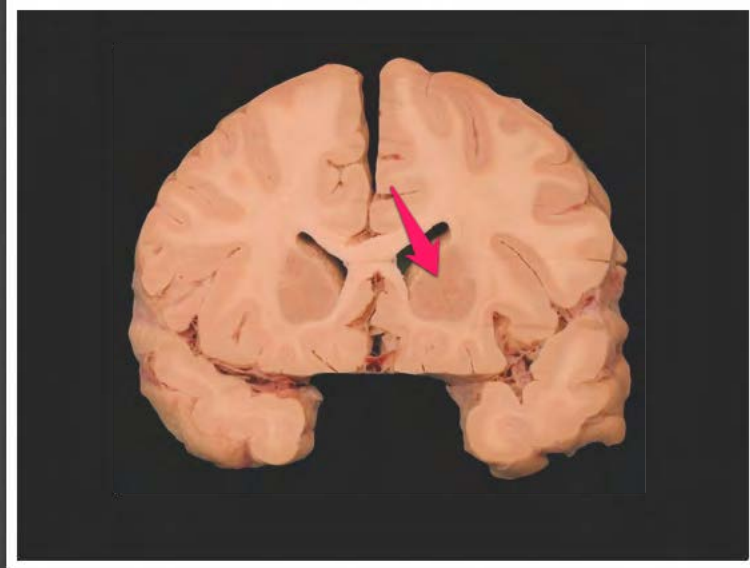


torebka wewnętrzna (*capsula interna*)

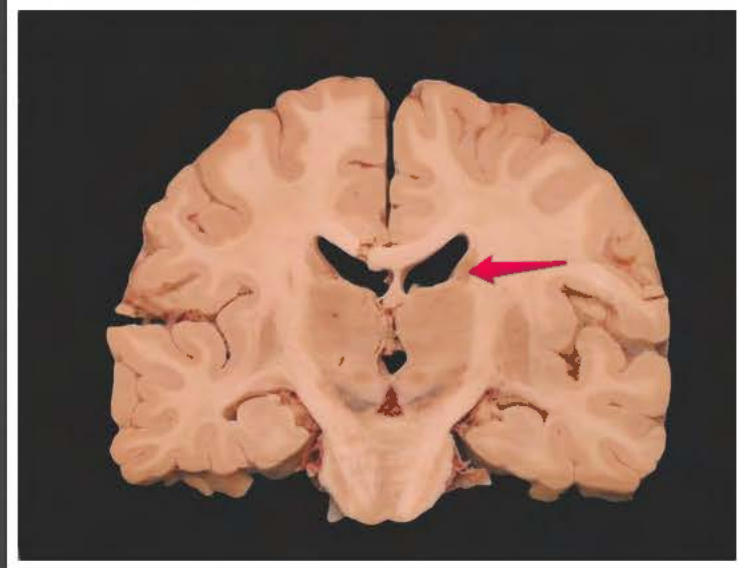


trzon jądra ogoniastego (*corpus  
nuclei caudati*)

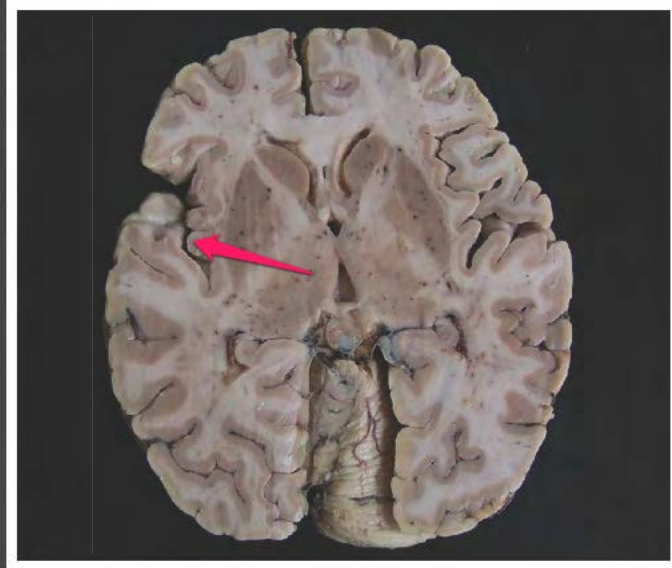




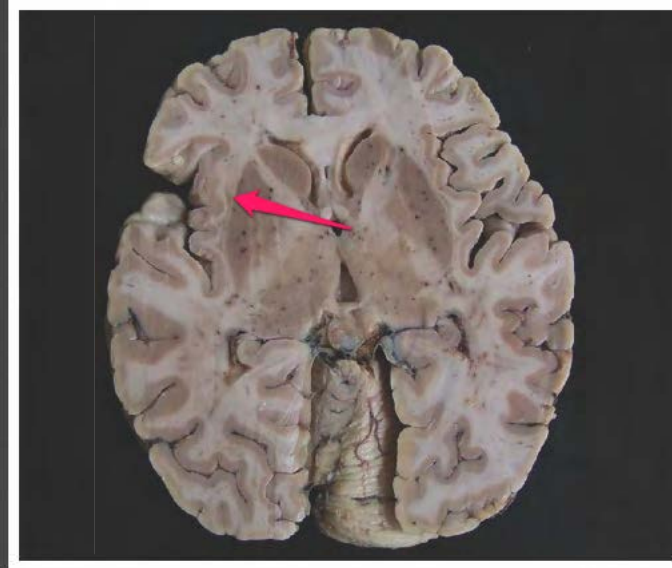
głowa jądra ogoniastego (*caput  
nuclei caudati*)



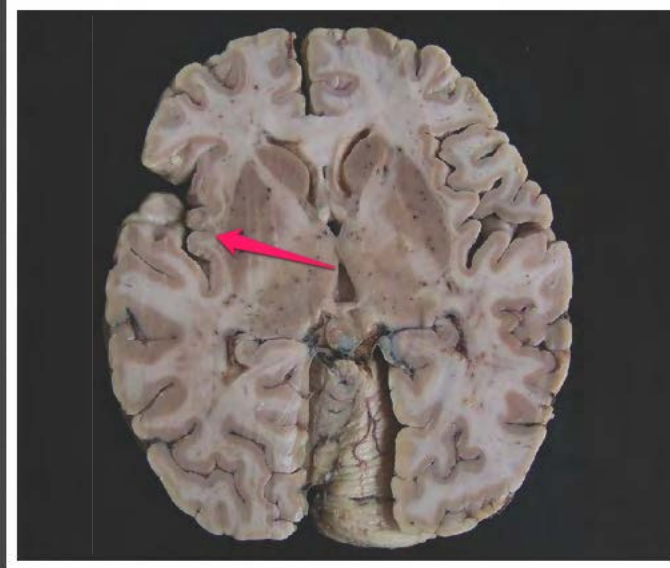
trzon jądra ogoniastego (*corpus  
nuclei caudati*)



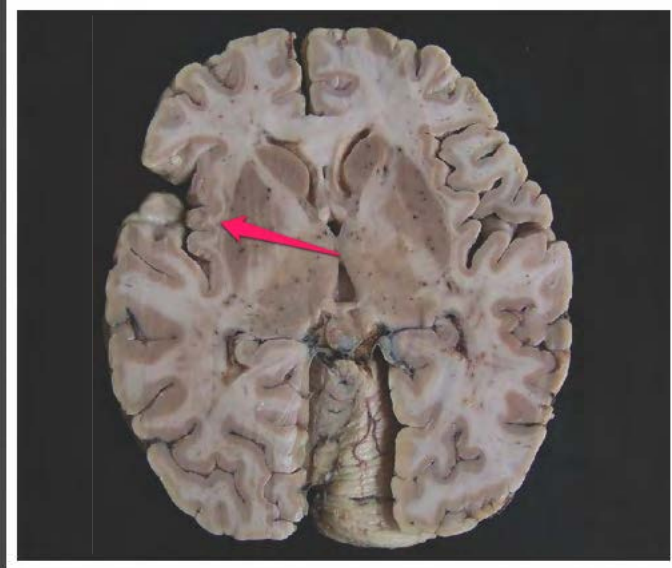
kora wyspy (*cortex insulae*)



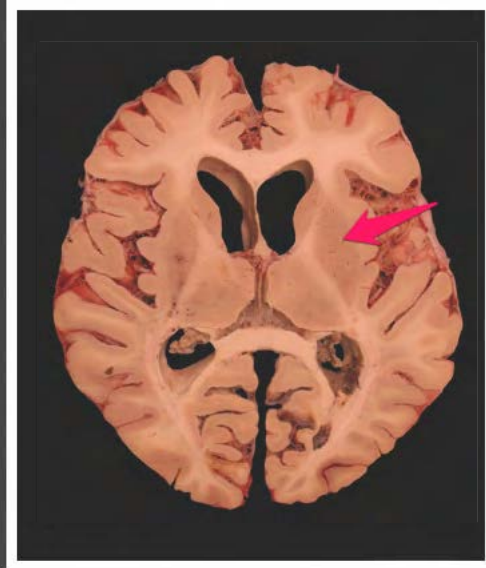
torebka zewnętrzna (*capsula externa*)



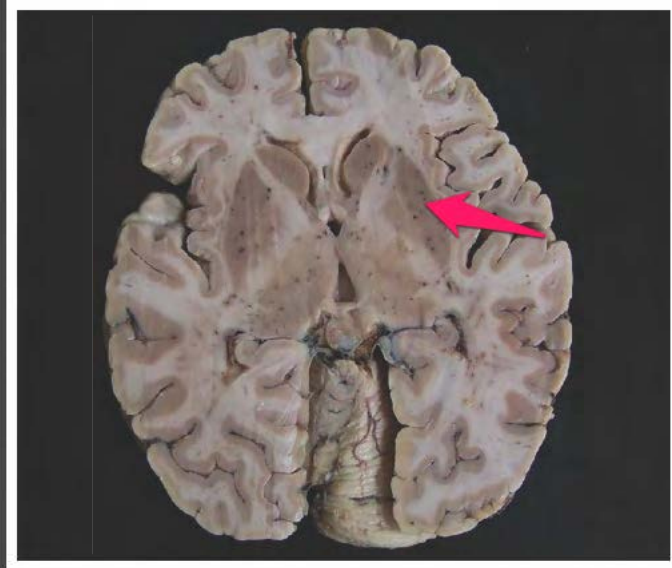
torebka ostatnia (*capsula extrema*)



przedmurze (*claustrum*)

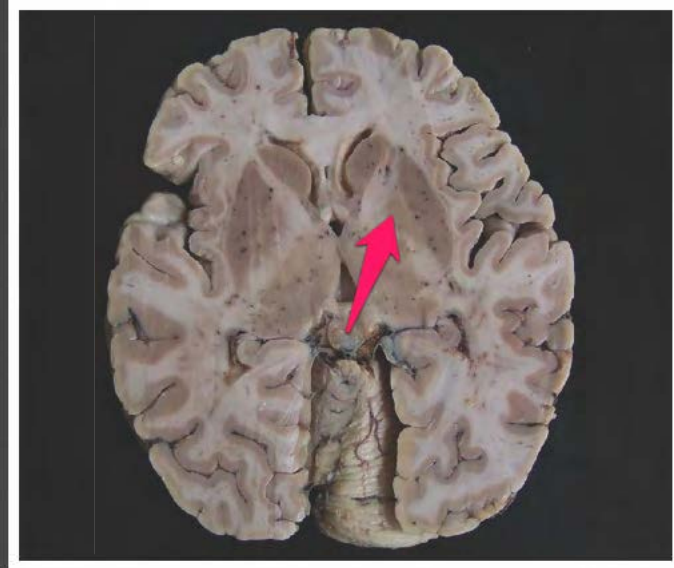


jądro soczewkowate (*nucleus  
lentiformis*)

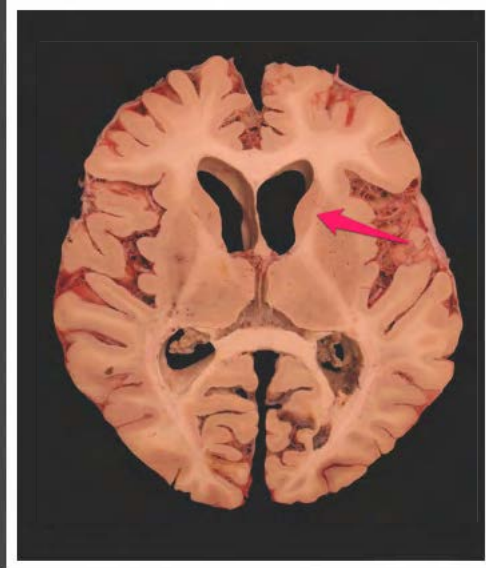


skorupa (*putamen*)

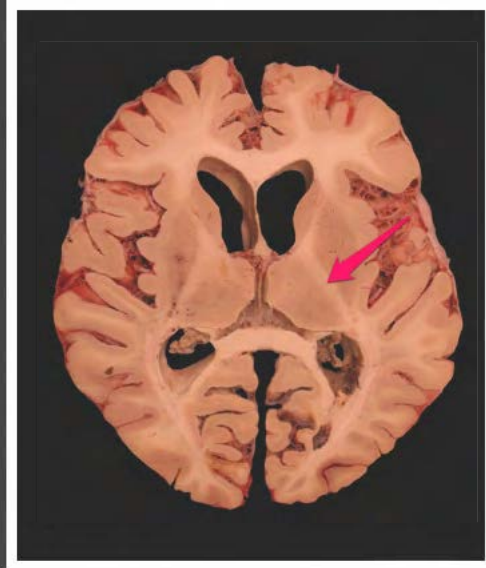




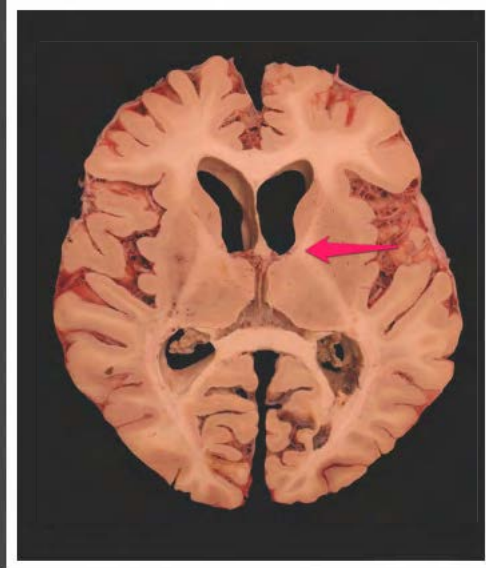
gałka biała (*globus pallidus*)



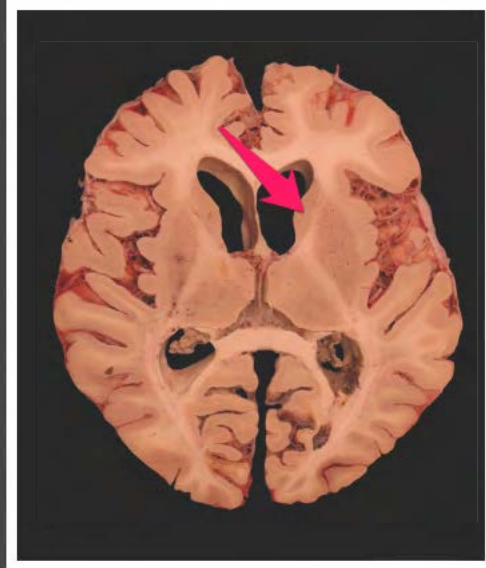
odnoga przednia torebki  
wewnętrznej (*crus anterius capsulae  
internae*)



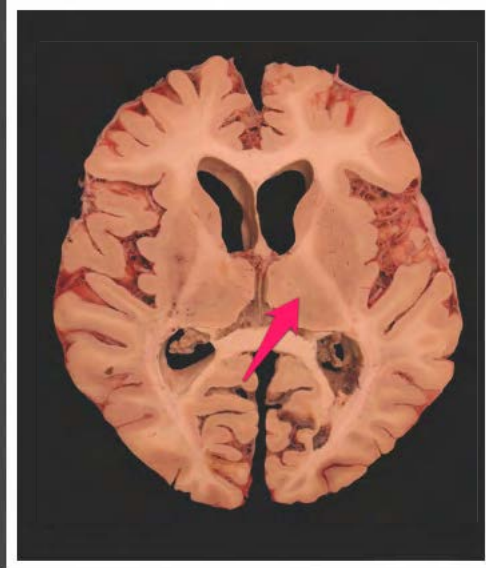
odnoga tylna torebki wewnętrznej  
(*crus posterius capsulae internaе*)



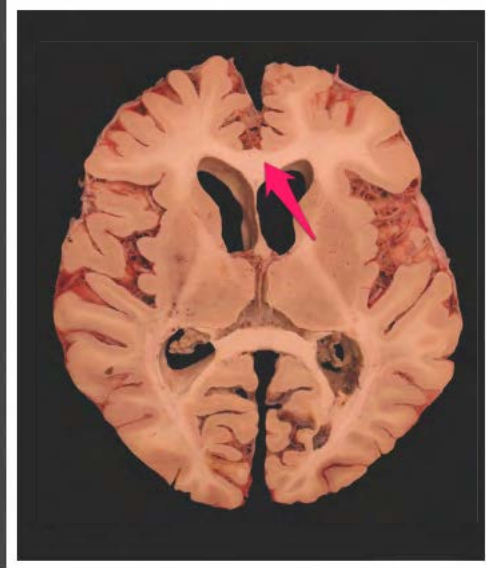
kolano torebki wewnętrznej (*genu  
capsulae internaе*)



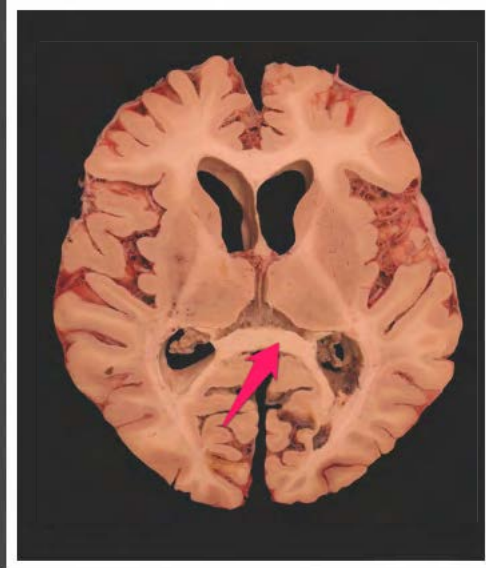
głowa jądra ogoniastego (*caput  
nuclei caudati*)



wzgórze (*thalamus*)

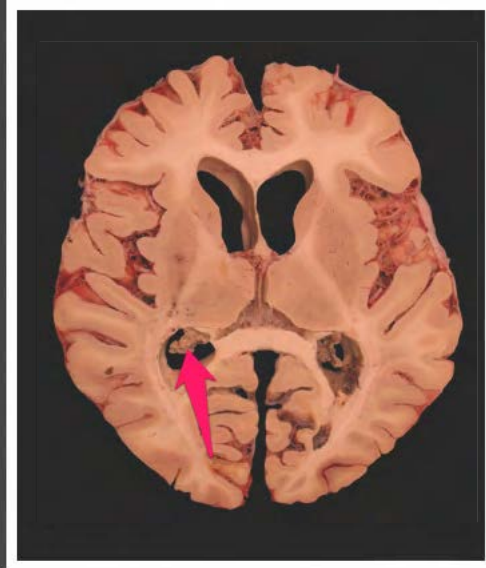


kleszcze mniejsze (*forceps minor*)

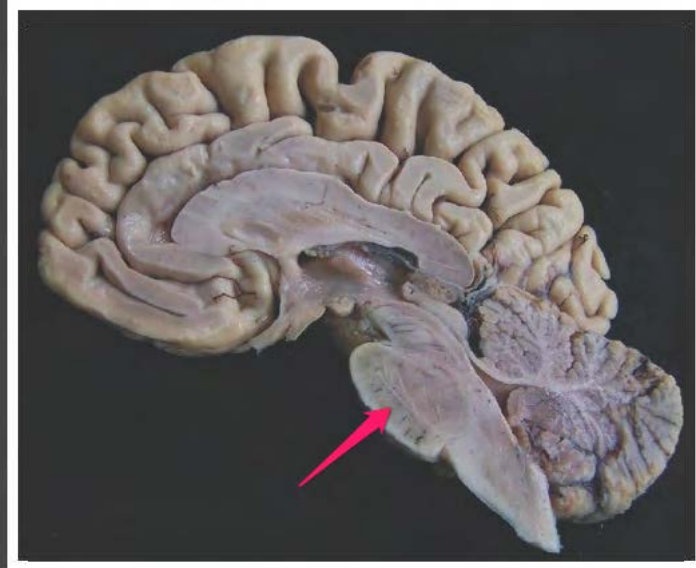


kleszcze większe (*forceps major*)

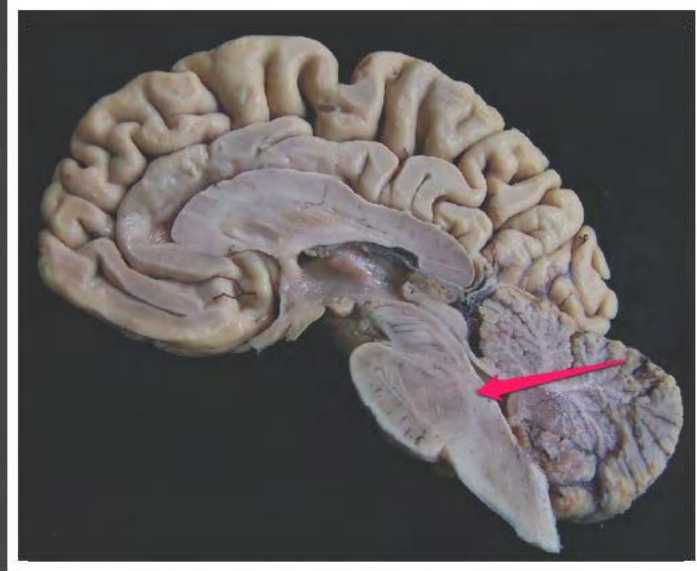




splot naczyniówkowy komory  
bocznej (*plexus choroideus  
ventriculi lateralis*)



część podstawna mostu (*pars  
basilaris pontis*)



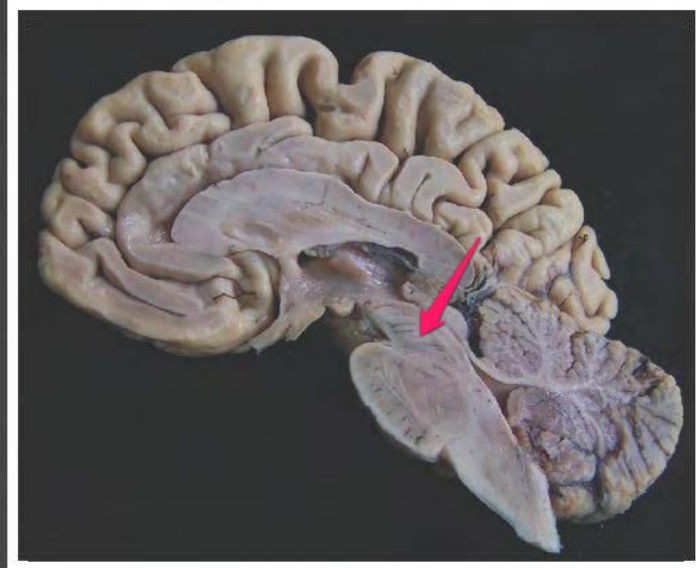
nakrywka mostu (*tegmentum pontis*)



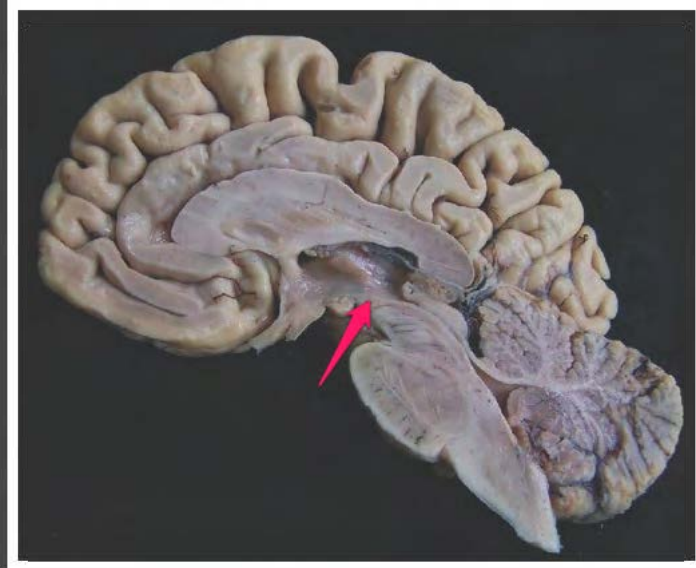
pokrywa śródmózgowia (*tectum mesencephali*)



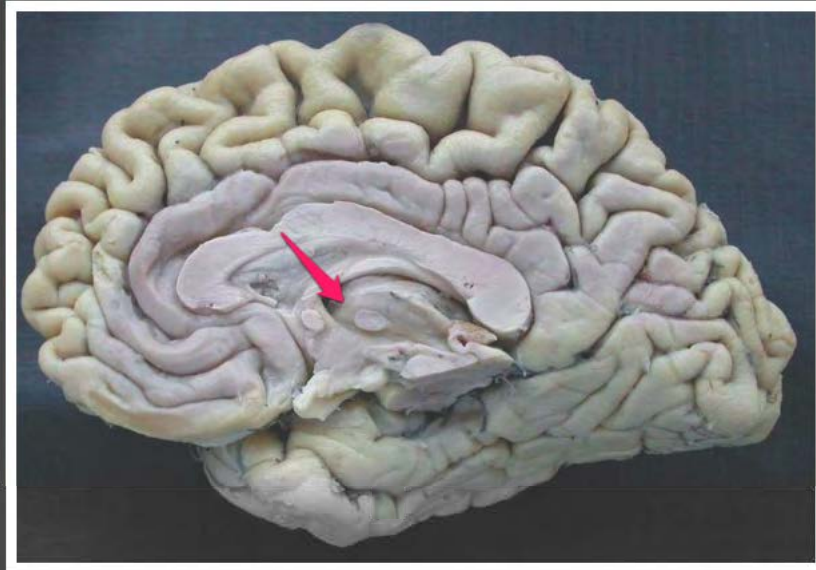
wodociąg mózgu (*aqueductus cerebri*)



nakrywka śródmózgowia  
(*tegmentum mesencephali*)



odnoga mózgu (*crus cerebri*)

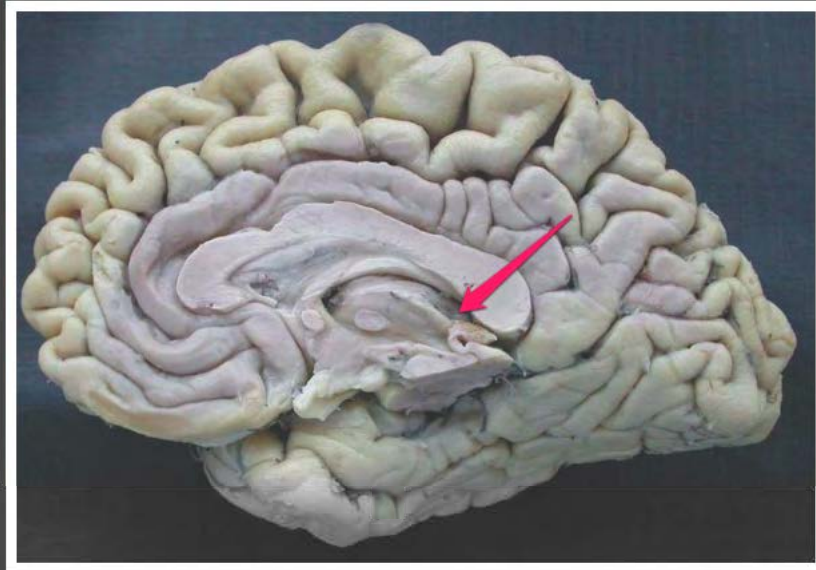


guzek przedni wzgórza (*tuberculum  
anterius thalami*)

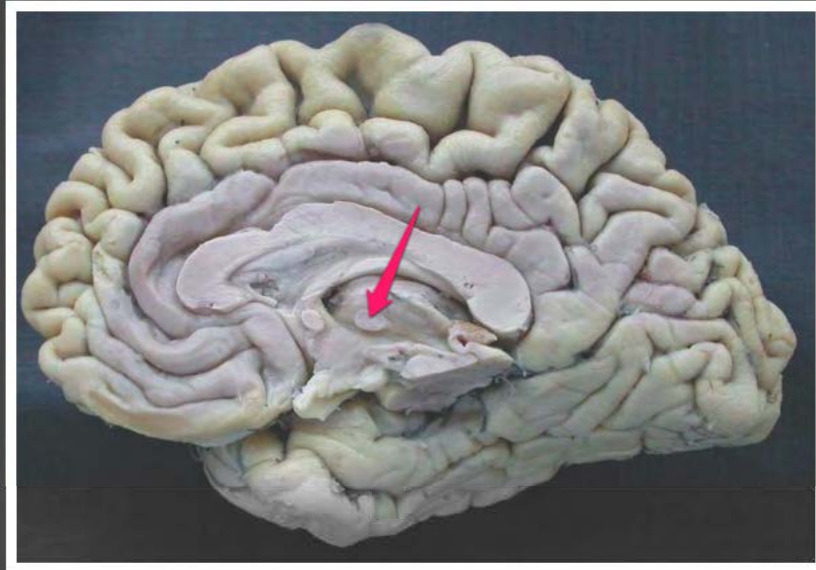




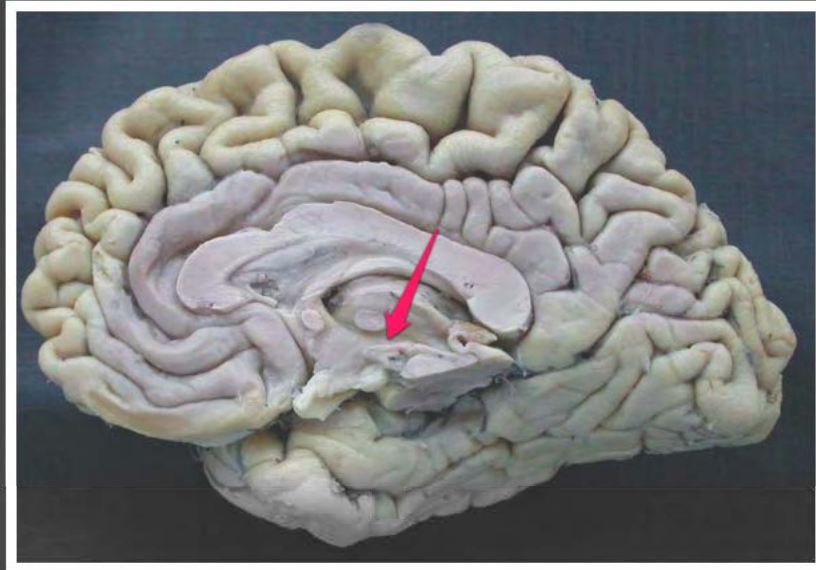
powierzchnia przyśrodkowa wzgórza  
(*facies medialis thalami*)



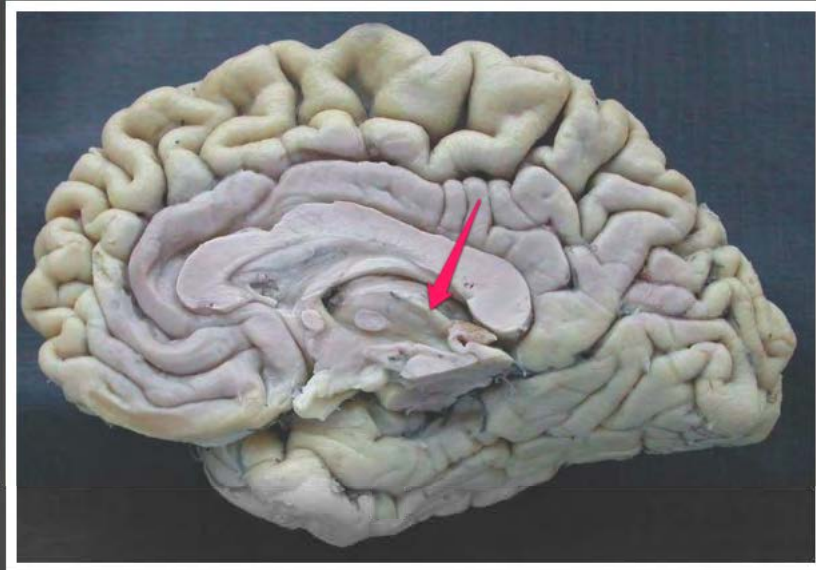
poduszka wzgórza (*pulvinar thalami*)



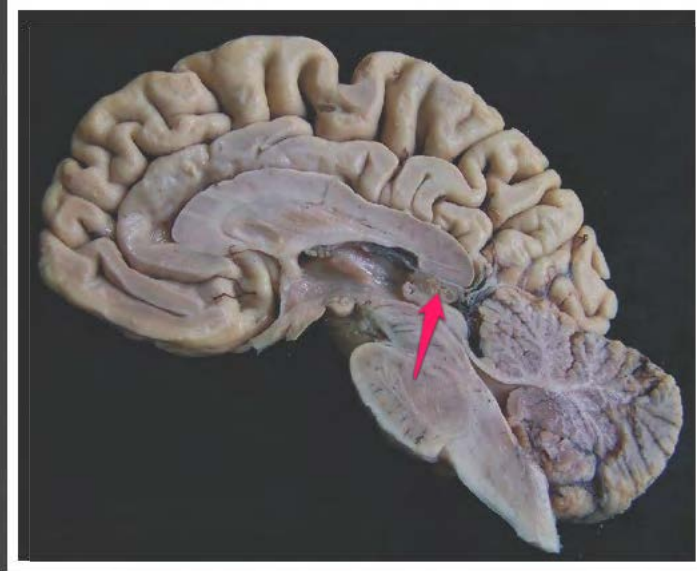
zrost międzywzgórzowy (*adhaesio interthalamica*)



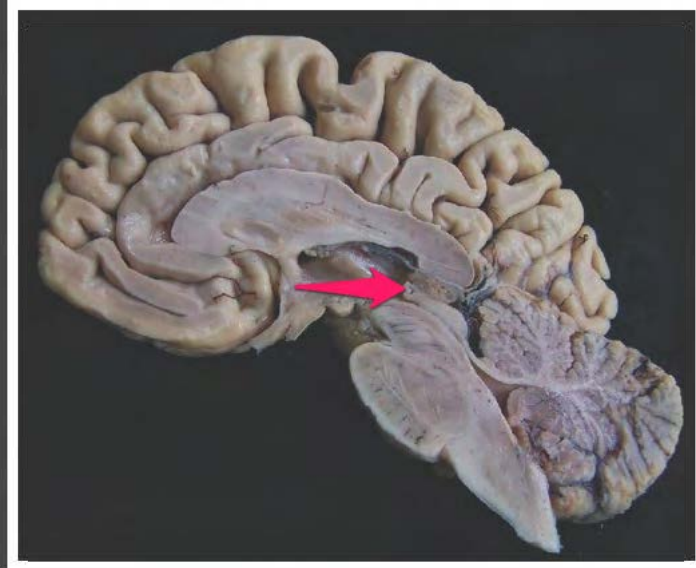
bruzda podwzgórzowa (*sulcus hypothalamicus*)



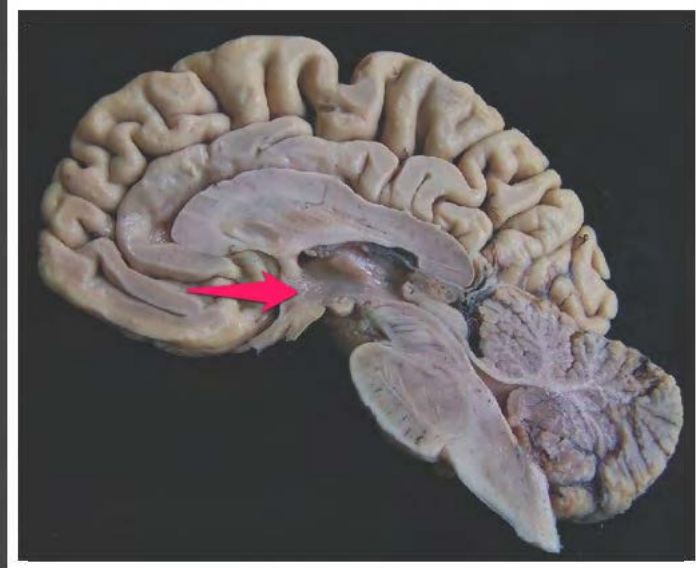
prążek rdzenny wzgórza (*stria medullaris thalami*)



szyszynka (*corpus pineale*)



spoidło tylne mózgu (*commisura cerebri posterior*)



podwzgórze (*hypothalamus*)





żyła wielka mózgu (*vena magna cerebri*)



dziób ciała modzelowatego (*rostrum  
corporis callosi*)



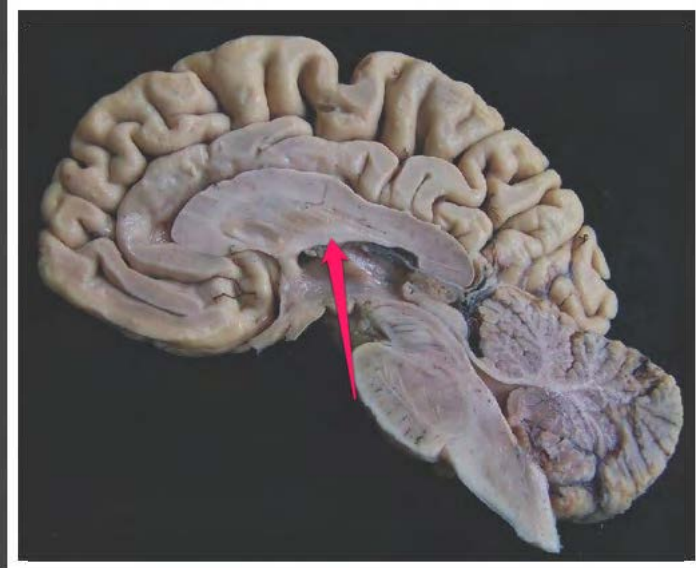
kolano ciała modzelowatego (*genu corporis callosi*)



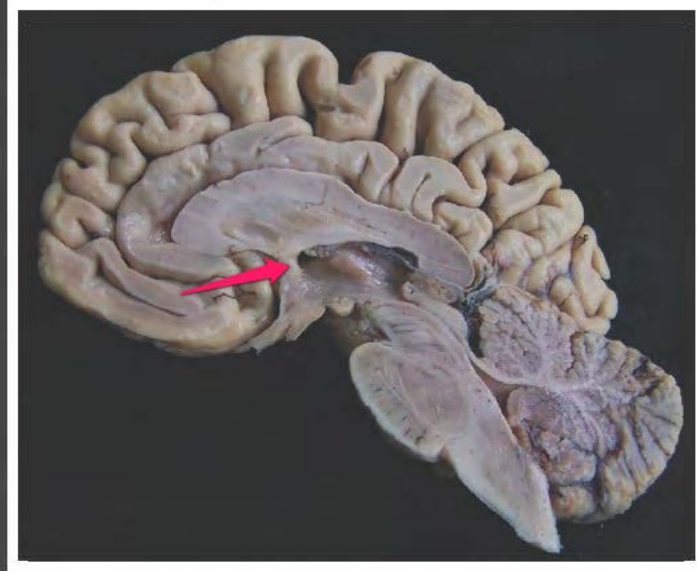
pień ciała modzelowatego (*truncus corporis callosi*)



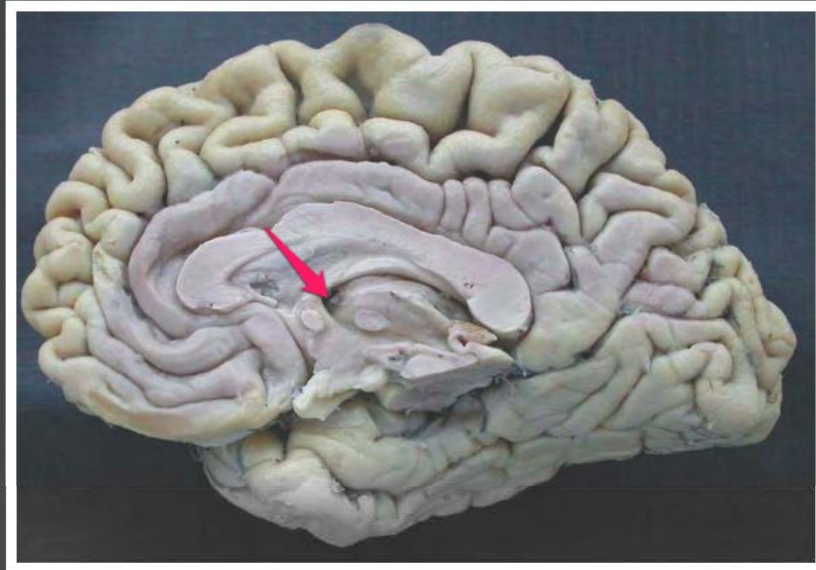
płat ciała modzelowatego (*splenium corporis callosi*)



trzon sklepienia (*corpus fornix*)

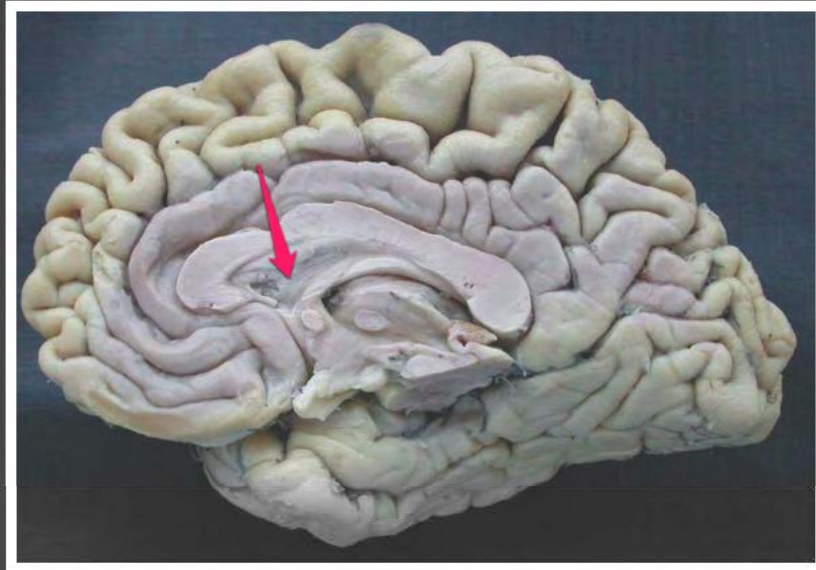


słup sklepienia (*columna fornicis*)

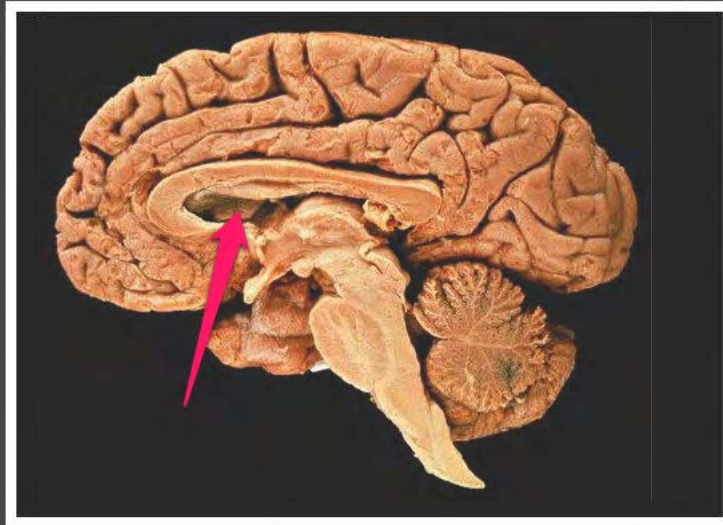


otwór międzykomorowy (*foramen  
interventriculare*)

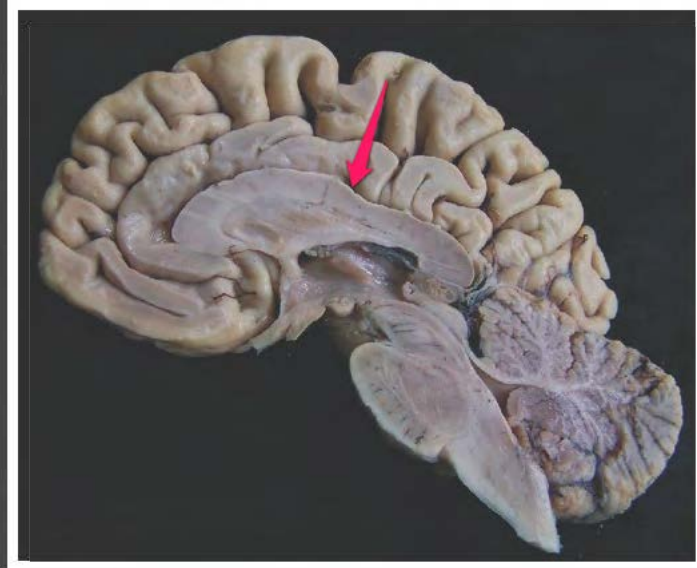




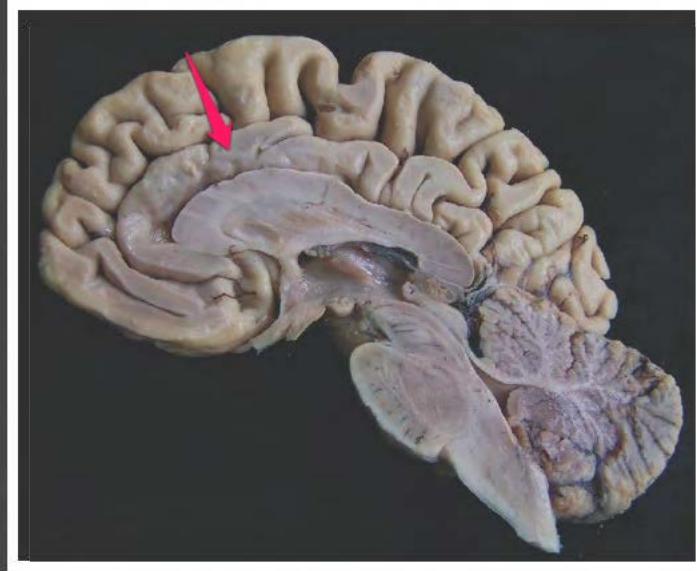
przegroda przezroczysta (*septum pellucidum*)



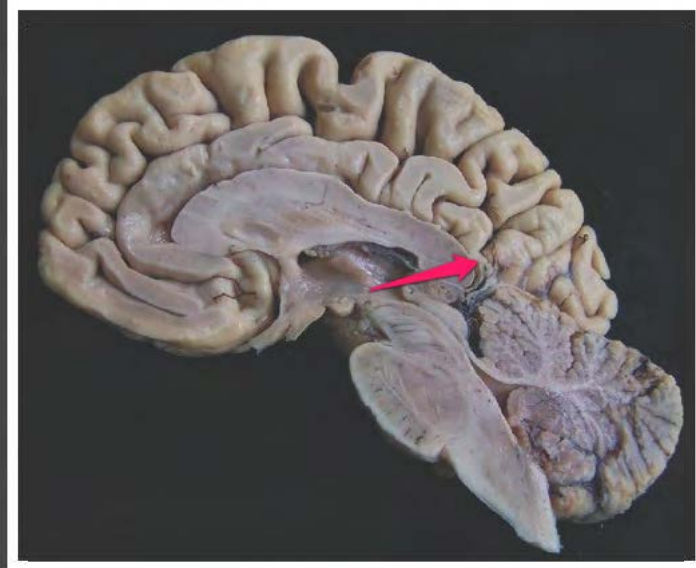
głowa jądra ogoniastego (*caput  
nuclei caudati*)



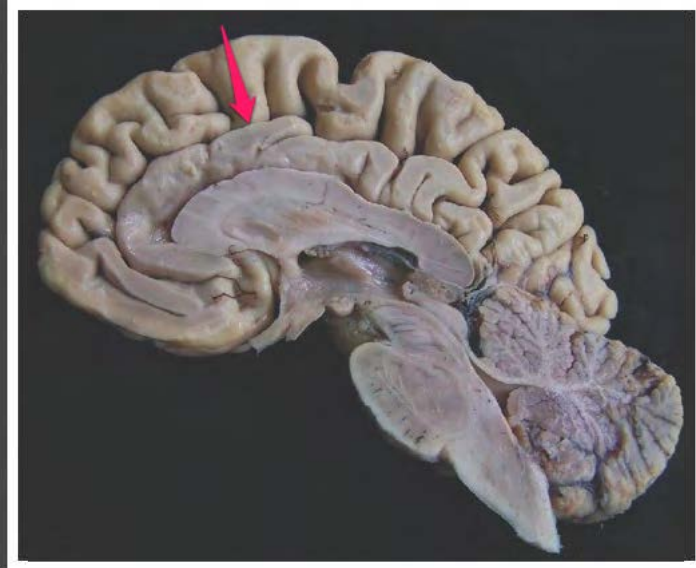
bruzda ciała modzelowatego (*sulcus corporis callosi*)



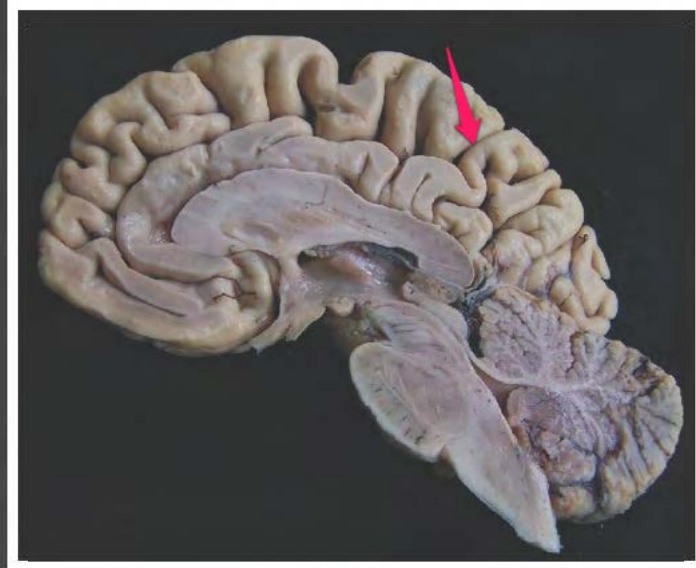
zakręt obręczy (*gyrus cinguli*)



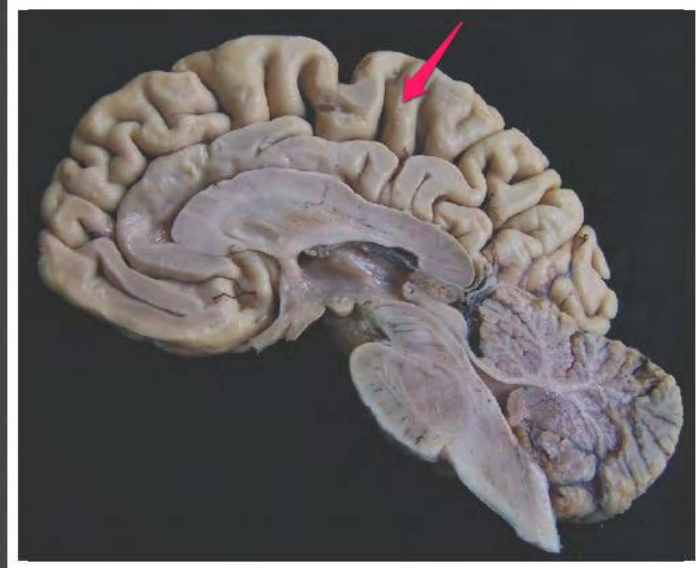
cieśń zakrętu obręczy (*isthmus gyri cinguli*)



bruzda obręczy (*sulcus cinguli*)

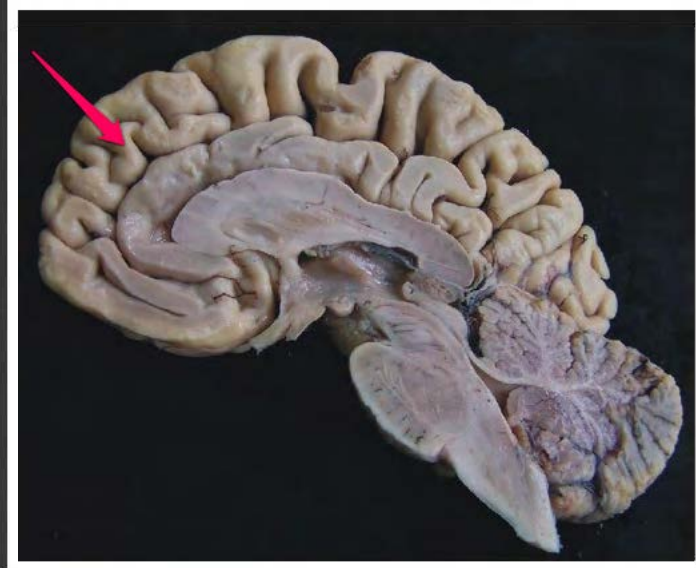


część brzeżna bruzdy obręczy (*pars marginalis sulci cinguli*)

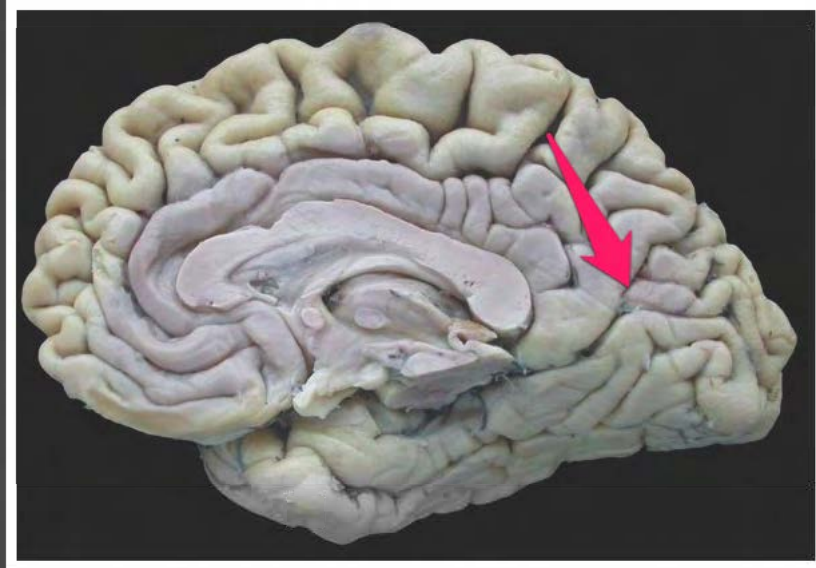


płatik okołosrodkowy (*lobulus  
paracentralis*)

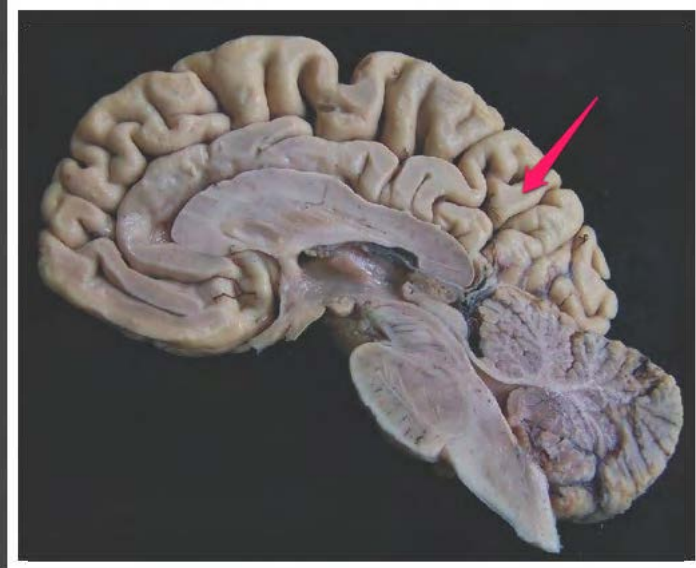




zakręt czołowy przyśrodkowy (*gyrus frontalis medialis*)



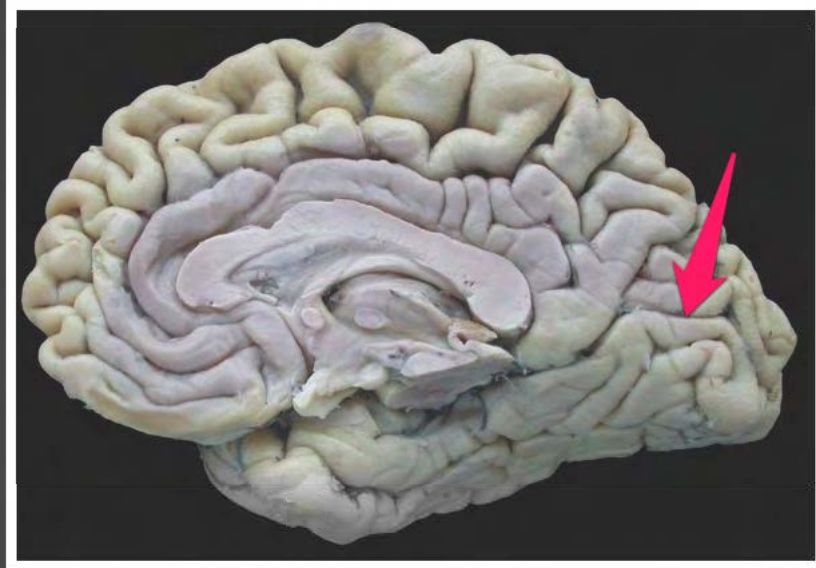
bruzda ciemieniowo-potyliczna  
(*sulcus parietooccipitalis*)



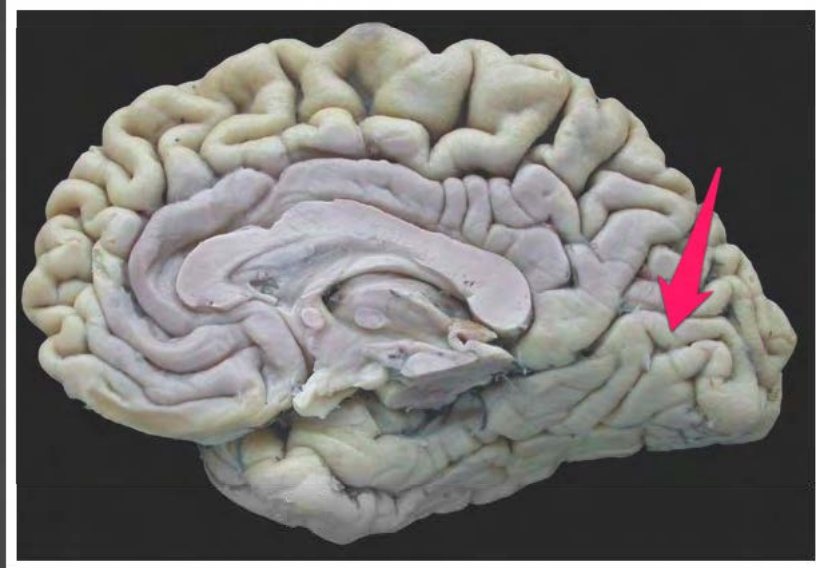
przedklinek (*precuneus*)



klinek (*cuneus*)



bruzda ostrogowa (*sulcus calcarinus*)



zakręt językowy (*gyrus lingualis*)



zastona rdzeniowa górna (*velum  
medullare superior*)

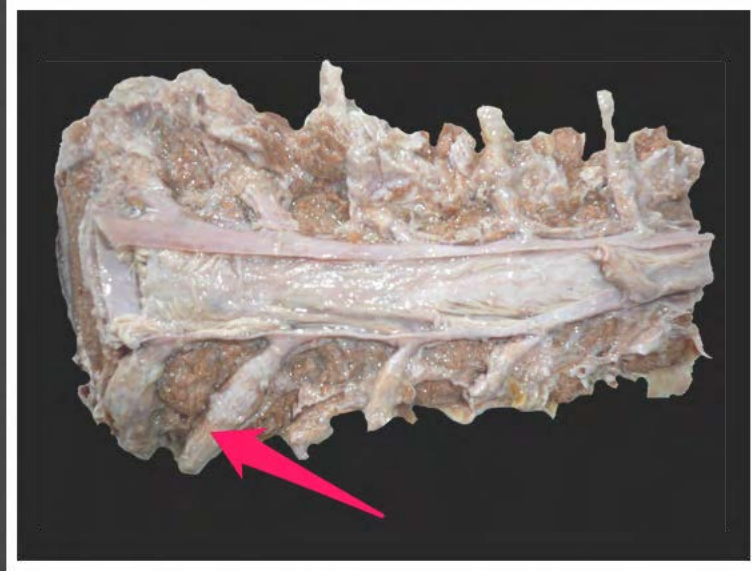


nić końcowa (*filum terminale*)





ogon koński (*cauda equina*)



nerw rdzeniowy (*nervus spinalis*)



stożek rdzeniowy (*conus medullaris*)