



Section One Vocabulary

Topic: Health


Common illnesses

F **Flu**

- ▶ What are the symptoms of flu?
You feel d e p r e s s e d.
- You have a t _____.
- You a _____ all over.
- You may have a r _____ n _____.
- You may also have a s _____ t _____.

Food poisoning

- ▶ What are the symptoms of food poisoning?
You have s _____ a _____.
- You feel s _____.
- You may have d i a r r h o e a.
- You may also have a h _____.

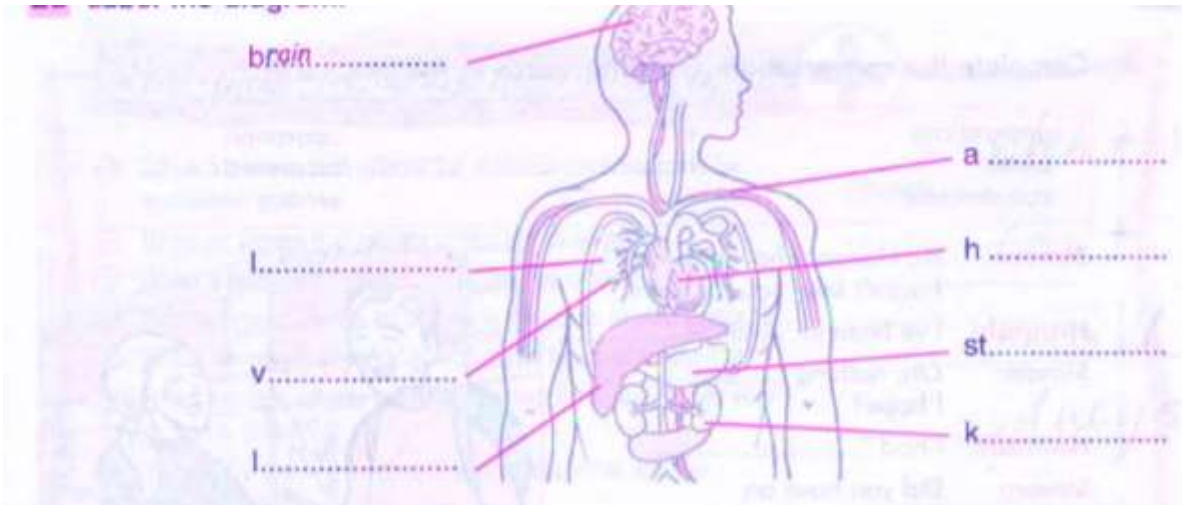


Task 2 : Describe what's wrong with Wayne





Task 3 : Fill the blanks



Task 4 : Use the words from the previous task to complete the chart

Part of the body	Function
1 <i>the liver</i>	It weighs about two kilos and it is where food is stored or processed.
2	They carry blood from the heart to the rest of the body.
3	It is like a bag in which food is changed into liquid.
4	They filter the blood and get rid of waste liquid.
5	They carry blood to the heart from the rest of the body.
6	It pumps the blood around the body.
7	You have two, and you need them to breathe.
8	It controls everything you do.

Task 5: Complete the expressions.

- 'He's under the weather' means *'He doesn't feel very well'*
- 'She's sh*.....' means 'She's shaking because she's so cold'.
- You can see that he's got a fever because *he's sw*.....
- You don't say a 'strong' pain; you say *a*..... *pain* .
- You don't say a 'soft' ache; you say *a*..... *ache* .
- What should you do before exercise? *up* .
- What should you do after exercise? *down* .
- Stay away from stressful situations; in other words, *stress* .
- If your skin itches, you have a skin *i*.....
- Footballers often have physiotherapy to treat *st*..... in their joints.



Task 6: Match the sentences from column A with sentences from column B

A	B
1 You've only grazed your knee.	a Do you sleep well?
2 It's a deep cut.	b I need to examine your chest.
3 I'll give you a prescription for some tablets.	c I'll send you for an X-ray.
4 Your foot is very swollen. You may have broken a bone.	d Take one three times a day.
5 So you're going to travel around the world?	e I'll send you to see a specialist.
6 Depression can be linked to tiredness.	f You may need some injections.
7 I don't know what's causing the rash.	g The nurse will clean it and put some antiseptic cream on it.
8 Take your shirt off, please.	h You'll need stitches.

Task 7: Identify these skin conditions

B	L	I	S	T	E	R
R	U	L	C	E	R	S
U	M	W	A	R	T	O
I	P	S	R	A	S	H
S	P	O	T	D	C	K
E	S	O	R	E	L	I



1 *lump*.....
 2 *b*.....
 3 *s*.....
 4 *cold*.....
 5 *mouth*.....

6 *s*.....
 7 *b*.....
 8 *r*.....
 9 *w*.....

Task 8: fill the blanks and answer the questions.

Have you ever (tifaned) *fainted*.....?
 ➔ (raspined)..... your wrist?
 (stwited)..... your ankle?
 (korben)..... a bone?
 (nurbt)..... yourself?
 (dalsced)..... yourself?
 Give details.

Have you ever *had*..... food poisoning?
 your appetite?
 depressed?
 by a dog or other animal?
 an X-ray?
 by a bee or other insect?
 Give details.

Task 9: fill the blanks

