



### General Features

- ◆ Sealed and maintenance free operation.
- ◆ Non-Spillable construction design.
- ◆ ABS containers and covers(UL94HB, UL94V-0) optional.
- ◆ Safety valve installation for explosion proof.
- ◆ High quality and high reliability.
- ◆ Exceptional deep discharge recovery performance.
- ◆ Low self discharge characteristic.
- ◆ Flexibility design for multiple install positions.



Battery Type	Valve-Regulated, Absorbed Glass Mat (AGM) Technology			
Nominal Voltage	2V			
Capacity(20°C)	20HR(6.56A, 1.8V/cell)	10HR(12.6A, 1.80V)	5HR(21.7A, 1.75V)	1HR(76.1A, 1.60V)
	132.2.0AH	126.0AH	108.5AH	76.1AH
Dimensions	Length	Width	Height	Total Height
	170mm(6.69inches)	98mm(3.86inches)	205mm(8.07inches)	212mm(8.35inch)
Approx Weight	Approx 8.0 kg (17.6lbs)			
Internal Resistance	Full Charged at 20°C : Approx 1.2mΩ			
Self Discharge	3% of capacity declined per month at 20°C			
Capacity affected by Temperature(10HR)	40°C	25°C	0°C	-15°C
	103%	100%	86%	65%
Charging Voltage (V)	Cycle use		Float use	
	2.4V~2.5V at 20°C. Temp. Coefficient -5mV/°C		2.25V~2.3V at 20 °C.Temp. Coefficient (-3mV/°C)	
Current	Max. Discharge Current		Initial Charging Current	
	1040A		Less than 39.0A	
Operating Temp. Range	Discharge		Charging	
	-15~50°C (5~122°F)		0~40°C (32~104°F)	
			Storage	
			-15~40°C (5~104°F)	

### Constant Current Discharge (Amperes) at 20 °C (68°F)

F.V/Time	5min	10min	15min	20min	30min	45min	1h	2h	3h	4h	5h	6h	8h	10h	20h
1.85V/cell	211	166	141	118	94.9	71.8	58.8	37.5	29.6	24.2	19.7	17.2	13.9	11.9	6.49
1.80V/cell	284	212	171	140	112	83.6	65.9	40.9	31.9	25.8	21.2	18.4	14.8	12.6	6.56
1.75V/cell	320	233	187	150	116	86.7	69.0	42.4	32.5	26.4	21.7	18.9	15.0	12.7	6.62
1.70V/cell	352	254	199	158	121	90.2	71.1	44.1	33.4	27.1	22.3	19.3	15.2	12.9	6.75
1.65V/cell	388	274	212	168	128	92.4	73.5	45.3	34.8	28.1	22.9	19.7	15.5	13.1	6.83
1.60V/cell	428	298	226	179	135	96.3	76.1	46.9	35.9	28.9	23.6	20.2	15.6	13.3	6.87

### Constant Power Discharge (Watts) at 20 °C (68°F)

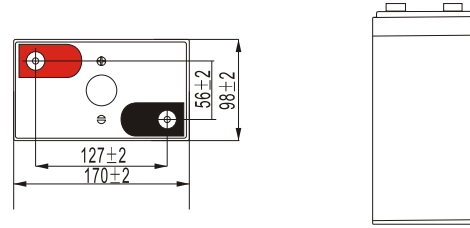
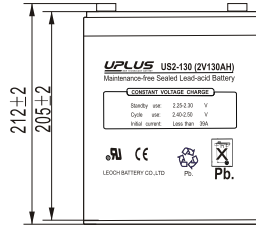
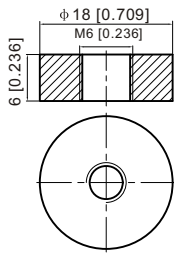
F.V/Time	5min	10min	15min	20min	30min	45min	1h	2h	3h	4h	5h	6h	8h	10h	20h
1.85V/cell	386	307	264	223	181	138	113	72.8	57.8	47.3	38.6	33.7	27.5	23.6	12.9
1.80V/cell	513	388	314	260	210	159	126	78.9	61.8	50.3	41.3	36.0	29.1	24.9	13.0
1.75V/cell	566	419	339	276	216	164	132	81.5	62.7	51.2	42.3	36.9	29.5	25.1	13.1
1.70V/cell	606	446	357	288	224	170	135	84.6	64.3	52.5	43.2	37.6	29.9	25.4	13.3
1.65V/cell	659	477	377	304	234	172	139	86.4	66.8	54.1	44.3	38.3	30.3	25.8	13.5
1.60V/cell	710	506	396	320	246	179	143	88.9	68.5	55.6	45.6	39.1	30.5	26.1	13.5



# Dimensions

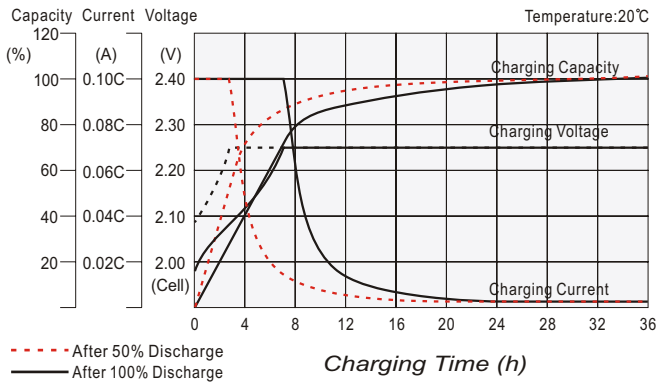
## T7 Terminal

Unit: mm [inches]

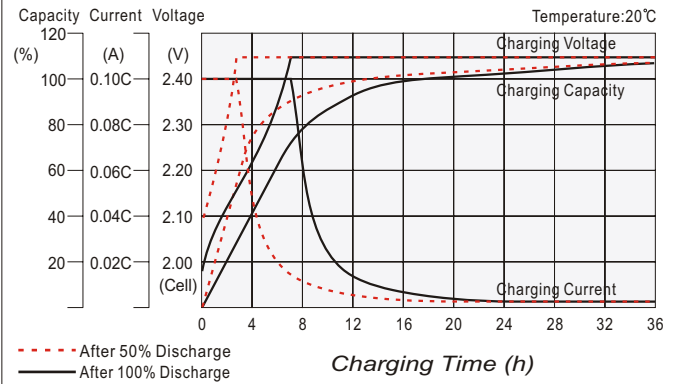


Torque: 3.9~5.4N\*M

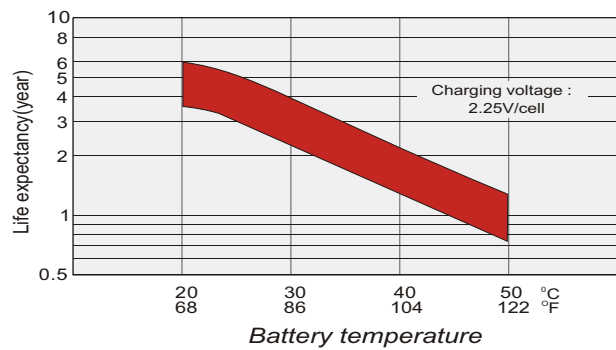
## Float charging characteristics



## Cycle use charging characteristics

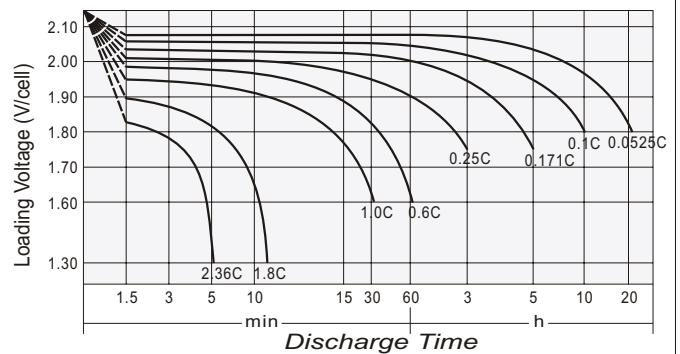


## Effect of Temperature on Long Term Float Life

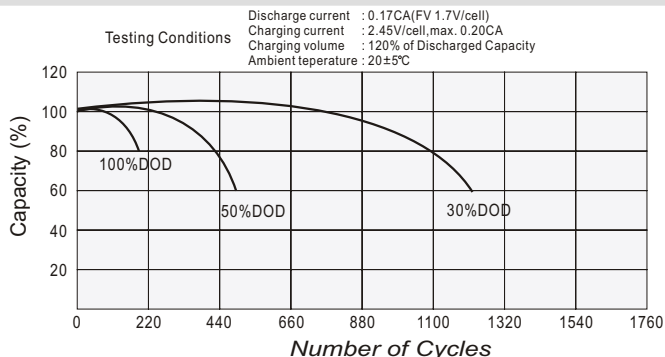


## Discharge characteristics

Temperature: 20°C



## Cycle Life in Relation to Depth of Discharge



## Self Discharge Characteristics

