

# CUTLER AND GROSS

SPRING / SUMMER 2020

# CUTLER AND GROSS

Cutler and Gross introduce a new line of sunglasses and optical frames for Spring/Summer 2020. Inspired by the spirit, eccentricity and bold, individual style of Londoners, the collection is comprised of eighteen new striking, designs alongside ten existing styles revived in classic Cutler and Gross colourways. Frames adopt revolutionary design techniques like 'televisioni' and regressive milling, making them fresh and relevant for the next generation.

Style Director, Marie Wilkinson says: "This collection encapsulates everything I love about the brand; the sumptuous quality and British daring that Mr Cutler and Mr Gross always encouraged. I can envisage the different personalities that will wear each frame and sunglass."

Standout pieces include the new 1367; a unisex slice sunglass with a striking, regressive matte milled brow line and wide temples. Designed with streetwear aficionados in mind, there are four colourways with the most daring options in bright red and striking white. Other exciting additions take form in new titanium designs 1364, 1365 and 1366 in both optical and sun. These futuristic, ultra-modern styles, take their shape from existing acetate models but are re-invented with a new combination of titanium and acetate materials, representing the greatest technological developments from within the Cutler and Gross factory.

Welcome to a New Generation of Eyewear.

## OPTICALS

NEW STYLES

SPRING / SUMMER 2020



# 1360

AVAILABLE IN TWO SIZES

*An angular square acetate frame that is cleverly accented to the outside edge. It has tapered temples that are perfectly matched with the metal wire core within and a unique slice keyhole bridge. Available in four colourways and two sizes.*



1360-01  
Matte Black



1360-02  
Classic Dark Tortoiseshell



1360-03  
Black on Camo



1360-04  
Classic Navy Blue



# 1361

If you loved the 1289, then the new model 1361 will be right up your street. The lower hinge and the soft square lens shape generously sized at 55mm is ideal for Essilor Eyezen lenses and progressive lenses. The comfortable keyhole bridge measuring 20mm and the gentle taper on the outside edge emphasises the cheekbones resulting in a winning frame.



1361-01  
Matte Black



1361-02  
Classic Dark Tortoiseshell



1361-03  
Black on Camo



1361-04  
Classic Navy Blue





# 1362

*To celebrate the 10th anniversary of the 1023, we introduce the 1362. If the 1023 and the 0772 had a love child, this would be it! The simplicity of the 1023 on the outside and sculpting of the 0772 within the inside. It has extra-long arms at 150mm. Flush vertical pins adds gravitas and our largest eye size. Available in four colourways.*



1362-01  
Matte Black



1362-02  
Classic Dark Tortoiseshell



1362-03  
Black on Camo



1362-04  
Classic Navy Blue

# 1363

*The perfect striking rectangular silhouette, with custom L shaped pins and deeply milled inside for all day comfort. Available in four colourways*



1363-01  
Matte Black



1363-02  
Classic Dark Tortoiseshell



1363-03  
Black on Camo



1363-04  
Classic Navy Blue







# 1364

*A futuristic, pure form D-frame that is incredibly strong yet ultra-lightweight due to its Italian titanium and acetate combined construction. It has a flattering, elevated bridge and screwless, vulcanised rubber nose pads, plus vertical flat pins and five barrel hinges.*



1364-01  
Matte Black



1364-02  
Matte Brown on Dark Turtle



1364-03  
Matte Black on Camo



# 1365

*The ultra-modern, newest addition to the 0822 family. It is incredibly strong yet ultra-lightweight due to its Italian titanium and acetate combined construction. It has an original keyhole bridge and screwless, vulcanised rubber nose pads plus vertical flat pins and five barrel hinges.*



1365-03

Matte Black on Camo



1365-04

Matte Navy on Black



# 1366

*The 1320 silhouette is reborn in titanium. With a generous bridge, it is incredibly strong yet ultra-lightweight due to its Italian titanium and acetate combined construction. It has an original keyhole bridge and screwless, vulcanised rubber nose pads plus vertical flat pins and five barrel hinges.*



1366-01  
Matte Black



1366-02  
Matte Brown on Dark Turtle



1366-03  
Matte Black on Camo







# 1370

*A gentle sweeping, purrfect cat-eye. Deceptively simple with a full acetate, lightweight design ideal for all-day wear. Fully concealed hardware. Available in a perfect palette of four colourways to suit both cool and warm complexions.*



1370-01  
Black



1370-02  
Sticky Toffee



1370-03  
Prawn Cocktail



1370-04  
Red Mini



COLOUR REFRESHES IN EXISTING  
OPTICAL STYLES

# 0772V2

*An iconic square optical frame featuring a heavy brow and tapered temple. it is the younger sister of the 0772.*



0772V2BOC  
Black on Camo

---

# 1305

*A large, square optical frame with interior 'televisioni' milling from 9mm sheet acetate, shaped from behind for comfort. Flat bridge, a new vertical frontal pin, and pinless temples.*



1305-10  
Classic Navy Blue

---

# 1304

*A round oval design optical frame with interior 'televisioni' milling from 9mm sheet acetate, shaped from behind for comfort. Flat bridge, a new vertical frontal pin and pinless temples.*



1304-05  
Humble Potato



1304-06  
Classic Navy Blue

# 1320

*A bold optical frame featuring a straight browline and deep lens shape, with interior 'televisioni' milling for superior comfort and unique design, created from 9mm sheet laminated acetate.*



1320-03  
Black on Camo



# 0822V3

*An iconic, timeless aviator optical frame which is a larger version of the 0822, featuring a flat bridge and classic round pins.*



0822V3B  
Black



0822V3BOC  
Black on Camo



0822V3DTO7  
Dark Turtle





# SUNGLASSES

NEW STYLES

SPRING / SUMMER 2020



# 1363

*The perfect striking rectangular silhouette, with custom L-shaped pins and deeply milled interior for all day comfort. Available in two colourways.*



1363-01  
Black



1363-02  
Classic Dark Tortoiseshell







# 1364

*A futuristic, pure form D-frame that is incredibly strong yet ultra-lightweight due to its Italian titanium and acetate combined construction. With a flattering, elevated bridge and screwless, vulcanised rubber nose pads, plus vertical flat pins and five barrel hinges.*



1364-01  
Matte Black



1364-02  
Matte Navy Blue

---

# 1365

*The 1320 silhouette is reborn in titanium. With a generous bridge, it is incredibly strong yet ultra-lightweight due to its Italian titanium and acetate combined construction. It has an original, keyhole bridge and screwless, vulcanised rubber nose pads, plus vertical flat pins and five barrel hinges.*



1365-01  
Matte Black



1365-02  
Matte Brown



# 1367

*A new generation slice frame, with a striking regressive matte milled browline and wide temples. The primary frontal consists of polished acetate, whilst the base and temples have a matte finish, with flush vertical pins.*



1367-01  
Black



1367-02  
Black on Camo



1367-03  
Solid Red



1367-04  
Solid White





# 1368

*A statement, sculptural slice frame with 'televisioni' milling and wider temples for added drama. Gold hardware and base 4 lenses complete the look.*



1368-01  
Black



1368-02  
Shiny Black and Camo



1368-03  
Solid Red



1368-04  
Sticky Toffee



# 1369

*An oversized, ultra-glamorous square frame with frontal 'televisioni' milling. A beautiful, symmetrical sunglass available in six new colourways.*



1369-01  
Black



1369-02  
Sticky Toffee



1369-03  
Black and Aztec Gold



1369-04  
Black on Horn



1369-05  
Red Summer of '69



1369-06  
Space Oddity Blue







# 1371

*A striking, modern hexagonal sunglass inspired by Le Corbusier's Chandigarh building, where the roof appears to float above the support of six pillars. Modernity and tradition are fused with its classic keyhole bridge and gold studded hardware.*



1371-01  
Black



1371-02  
Midnight Rambler Blue



1371-03  
Red



1371-04  
White



# 1374

*A modern take on a classic round design with a soft keyhole bridge, integrated crystal acetate nose pads and wide temples.*



1374-01  
Black



1374-02  
Black on Camo



1374-04  
Classic Navy Blue





COLOUR REFRESHES IN EXISTING  
SUNGLASS STYLES

# 0734

*An iconic, timeless pair of sunglasses featuring a keyhole bridge and vintage circular pins.*



0734MB  
Matte Black



0734BCAM  
Black on Camo



0734CNB  
Classic Navy Blue



0734C-04  
Jet Engine Grey



# 0734V2

An iconic, timeless sunglass design which is a smaller version of the classic 0734, featuring a keyhole bridge and vintage circular pins. It is from the same style group as the 1083 and 0734.



0734V2MB  
Matte Black



0734V2BCAM  
Black on Camo



0734V2CN  
Classic Navy Blue



# 0772V2

*An iconic square optical frame featuring a heavy brow and tapered temple. it's from same style group as 0772.*



0772V2B-BGD  
Black



0772V2DTO1-BZ  
Dark Turtle

# 1319

*An iconic square optical frame featuring a heavy brow and tapered temple. it is from the same style group as the 0772.*



1319-06  
Black on Camo



1319-07  
Black

# 1305

*Large square design optical frame with interior 'televisioni' milling from 9mm sheet acetate, shaped from behind for comfort with a flat bridge, a new vertical frontal pin and pinless temples.*



1305-09  
Classic Navy Blue

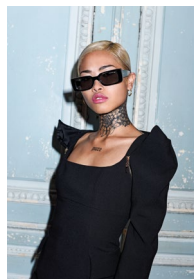
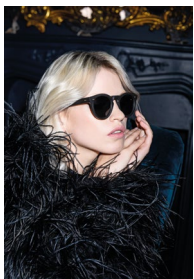
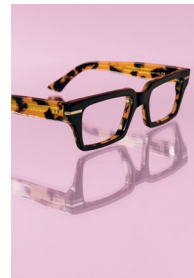
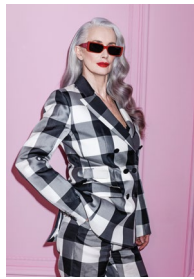
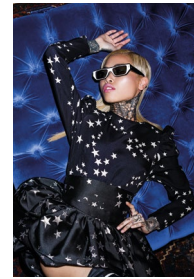
# 1330

*A cat-eye sunglass featuring vintage inspired ribbed pins. Ultrafinne acetate is paired with tonal coloured lenses. Following the success of the intial four colourways, it is now introduced in Havana.*



1330-05  
Havana





[cutlerandgross.com](http://cutlerandgross.com)

CONTACT US

Sales

+44 (0) 208 451 0331  
[sales@cutlerandgross.com](mailto:sales@cutlerandgross.com)

Press Office

+44 (0) 208 451 0331  
[pr@cutlerandgross.com](mailto:pr@cutlerandgross.com)

General Enquiries

+44 (0) 208 451 0331  
[askme@cutlerandgross.com](mailto:askme@cutlerandgross.com)

[@cutlerandgross](#)