



FRB-100

FRB-90

COLOR/STP

VN

F.G.I. TECHNOLOGY

Long Scale

REVOLVER BASS FRB-90

¥90,000

NECK/Maple
FINGER BOARD/Rosewood, 24F., 350R, 3400'Scale
NECK JOIN/ Bolt-On
BODY/Southern Forest Ash or Sen
PICK UP/NEW F.G.I. TECHNOLOGY-FJ
CONTROL/Volume, Balancer, Treble, Bass (Active Tone Control)
BRIDGE/BB-4010
COLOR/BL, SW, STP, VN

REVOLVER BASS FRB-100

¥100,000

NECK/Maple
FINGER BOARD/Rosewood, 24F., 350R, 3400'Scale
NECK JOIN/ Bolt-On
BODY/Southern Forest Ash or Sen
PICK UP/NEW F.G.I. TECHNOLOGY-FJ
CONTROL/Volume, Balancer, Treble, Bass (Active Tone Control)
BRIDGE/BB-5010
COLOR/SBL, STW, STP, VN

REVOLVER BASS

FRB-75



COLOR / SBL

EGL TECHNOLOGY

REVOLVER BASS FRB-75

¥75,000

NECK/Maple
FINGER BOARD/Rosewood, 24F, 350R, 34.00"Scale
NECK JOIN/Butt-On
BODY/Ses
PICK UP/NEW EGL TECHNOLOGY-PJ
CONTROL/V, volume, Balance, Treble, Bass/Active Tone Control
BRIDGE/BB-8G
COLOR/SBL, STW, STP, YN

Long Scale



COLOR/STP



STW



YN

REVOLVER BASS

FRB-60



COLOR/SW

REVOLVER BASS
FRB-60
¥60,000

NECK/Maple
FINGER BOARD/Rosewood, 24F., 330R, 34.00"Scale
NECK JOINT/Bolt-On
BODY/Basswood
PICKUP/VPS-2(1xof1, VIB-2)(1xof1)
CONTROL/2volume, 1tone
BRIDGE/90-88
COLOR/BI, SW, RED, MTV, MTB

Long Scale



REVOLVER BASS
FRB-70



COLOR/ST



REVOLVER BASS FRB-70

¥70,000

NECK/M Maple
FINGER BOARD/Rosewood, 21F, 330R, 32.00" Scale
NECK JOINT/Bolt-On
BODY/Basswood or 5pc
PICK UP/NEW F.G.I. TECHNOLOGY-PJ
CONTROL/M, Volume, Balance, Treble, Bass (Active Tone Control)
BRIDGE/BB-70
COLOR/BL, SW, STB

Medium Scale



REVOLVER BASS
FRB-55



REVOLVER BASS
FRB-55

¥55,000

NECK/Neple
FINGER BOARD/Rosewood, 21F., 150R, 32.00"Scale
NECK JOINT/Bolt-On
BODY/Basswood
PICK UP/VFB-2(front), V18-2R(rear)
CONTROL/2volume, 1tone
BRIDGE,18-76
COLOR/BL, SW, RED, MTV, MTB

Medium Scale



COLOR/ SW



RED



MTV



HISASHI IMAI/BUCK-TICK



HIDEHIKO HOSHINO/BUCK-TICK



PROCEDURE MODEL

プロシージャー・モデルはギター、ベースの基本的機能、バランスを崩さないようにボディ、ネックをスケールダウンし、ショート・スケールならではのメリットを十分に生かし音楽性、演奏性に新しい可能性を追求したモデルです。



PROCEDURE MODEL
PR-45
¥45,000

NECK/Maple
FINGER BOARD/Basswood, 22F., 350g, 24.00"Scale
NECK JOINT/Bolt-On
BODY/Basswood
PICK UP/DG-1(front, ceramic), SG-2(rear)
CONTROL/Volume, Tone, Sway Lever SW
BRIDGE/Synchronized with Koko-Edge Tremolo-B
COLOR/BL, SW, RED, P, Y

COLOR/BL



"SHORT SCALE & CUSTOM BODY"

SW



COLOR/BL

PROCEDURE MODEL
PT-45
¥45,000

NECK/Maple
FINGER BOARD/Rosewood, 22F, 350B, 24.00"Scale
NECK JOINT Bolt-On
BODY/Basswood
PICK UP DS-1
CONTROL/Volume, Tone, Toggle SW
BRIDGE/Combination-B
COLOR/BL, SW



SW

"SHORT SCALE & CUSTOM BODY"



COLOR/BL

PROCEDURE MODEL

PRB-45

¥45,000

NECK: Maple
FINISH BOARD: Rosewood, 21F, 350R, 30.37" Scale
NECK JOINT: Bolt-On
BODY: Basswood
PICK UP: VPS-3(front), VIB-3R(rear)
CONTROL: 2-volume, 1-tone
BRIDGE: BB-7C
COLOR: BL, SW, RED, P, Y

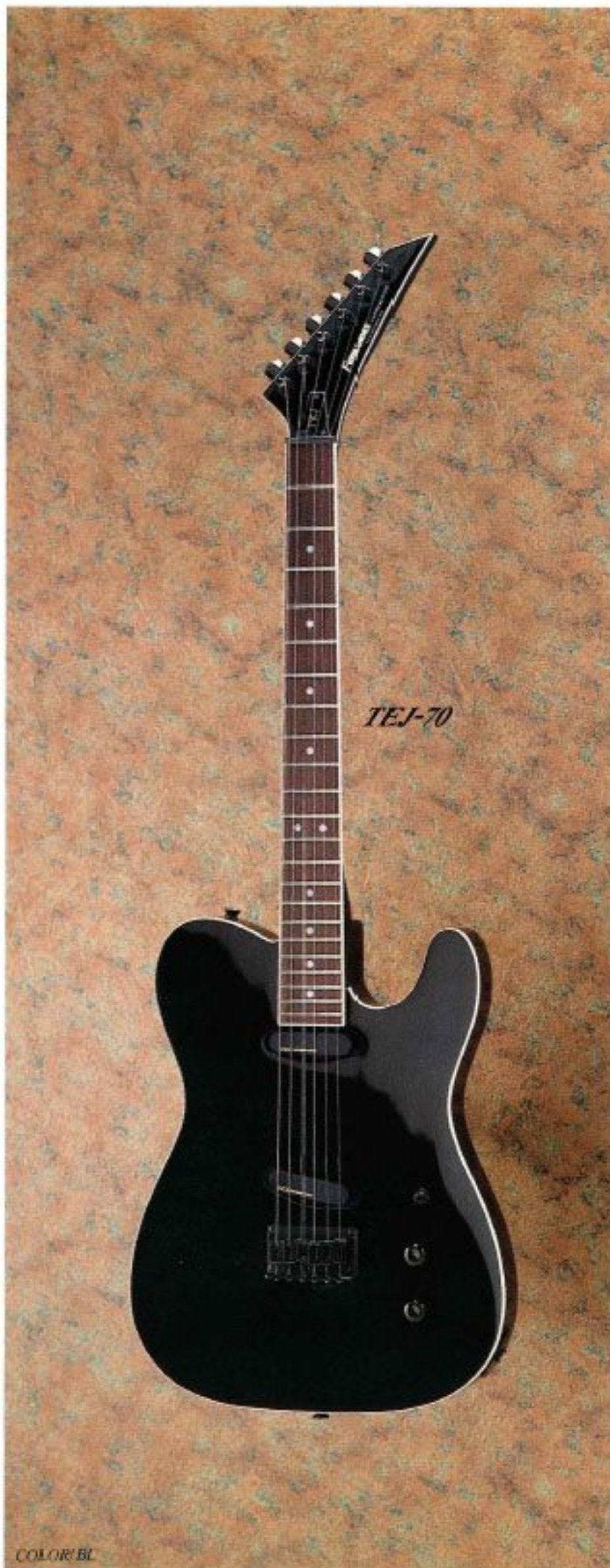


SW

"SHORT SCALE & CUSTOM BODY"

TEJ





TEJ-70



TEJB-70

EGL TECHNOLOGY

TEJ-70

¥70,000

NECK/Maple
 FINGER BOARD/Rosewood, 22F, 350R, 25.50"Scale
 NECK JOINT/Bolt-On
 BODY/Basswood
 PICKUP/NEW F.G.I. TECHNOLOGY-T
 CONTROL/1volume, 1tone Mini SW.
 BRIDGE/Combination-B
 COLOR/BL, SW

TEJB-70

¥70,000

NECK/Maple
 FINGER BOARD/Rosewood, 21F, 350R, 32.00"Scale
 NECK JOINT/Bolt-On
 BODY/Basswood
 PICKUP/NEW F.G.I. TECHNOLOGY-J
 CONTROL/2volume, 1tone
 BRIDGE/BB-5B
 COLOR/BL

Medium Scale

PRO MODEL

フェルナンデスのプロ・ミュージシャン専任スタッフによってカスタム・ビルドアップされたギターがこの「プロ・モデル」です。プロ・ミュージシャンから製作依頼のあったカスタム・モデルと同レベルのギターということが出来ます。



TOMOYASU HOTEL/COMPLEX

受注されてから製作されるモデルもありますので、6ヶ月以上の納期を必要とされる場合があります。オーダー時に御確認ください。ご希望、お問い合わせは、基本仕様以外のオーダーは受け付けておりません。また、プロ・ミュージシャン本人のものに仕様変更のあった場合、予告なく「プロ・モデル」の仕様変更がおこなわれる場合もありますので、御了承ください。

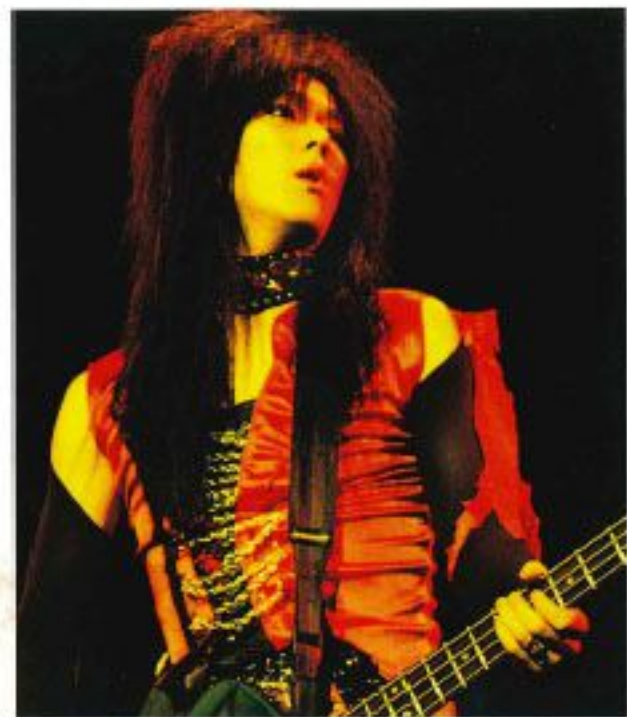


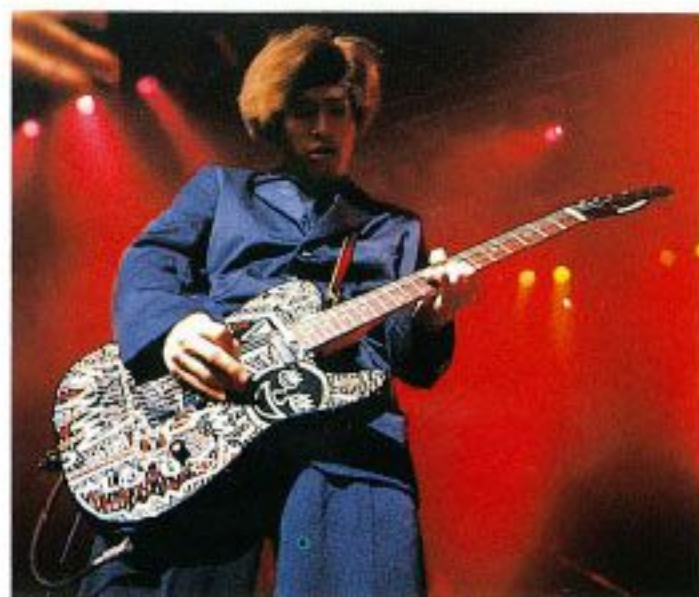
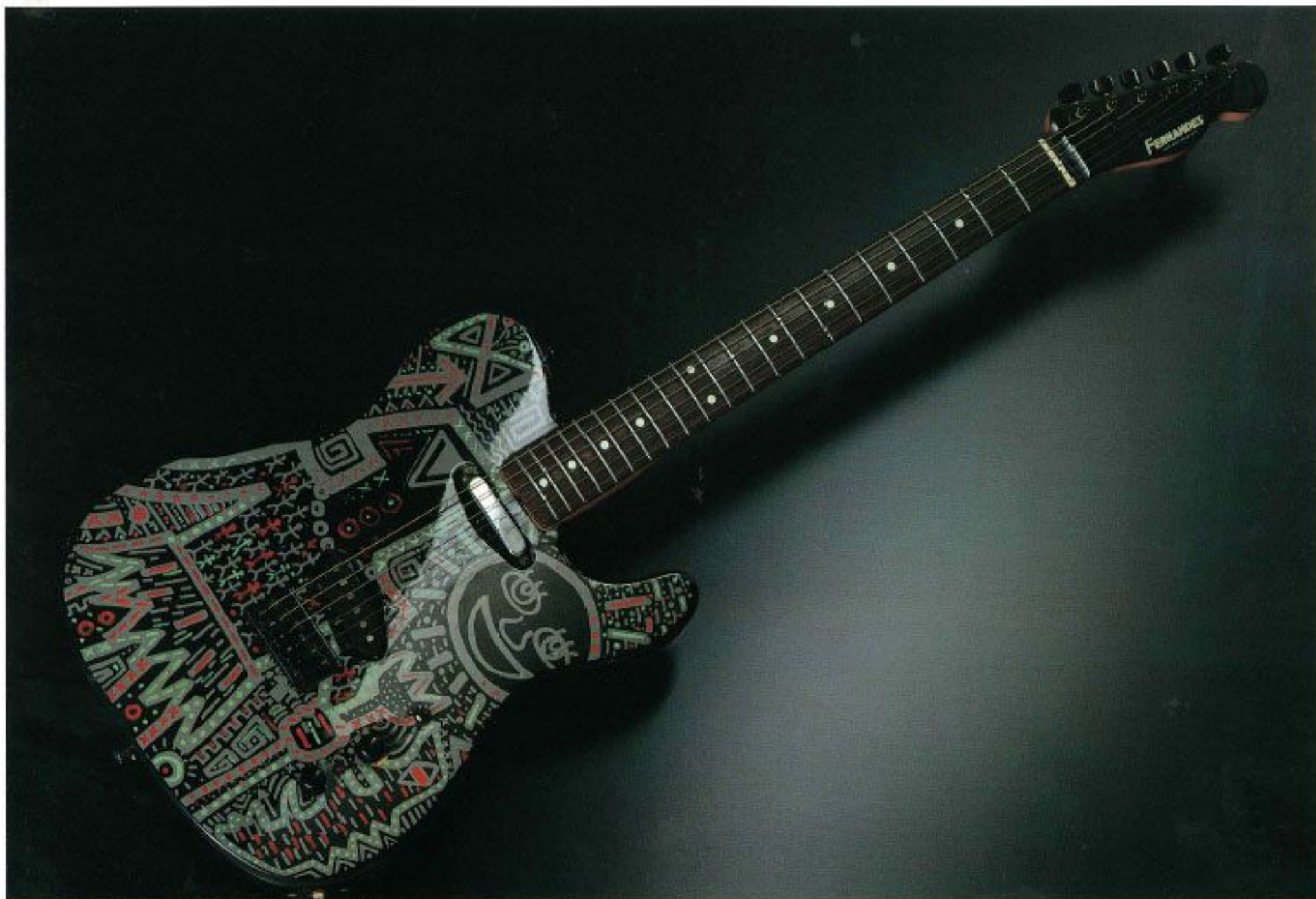
MV-480HT (HOTEL MODEL)
¥480,000



TE-240HT (HOTEL MODEL)
¥240,000

ZG-280NT (TOSHIRO MODEL)
¥280,000





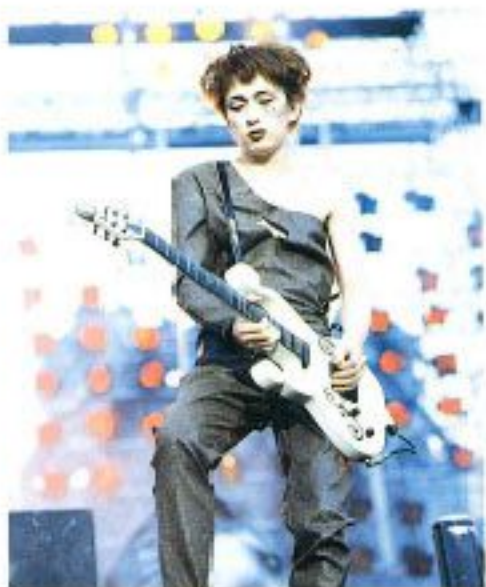
TE-220KS (KYOICHI MODEL)
¥220,000

KYOICHI SUGIMOTO

BT-480MM (IMAI MODEL)

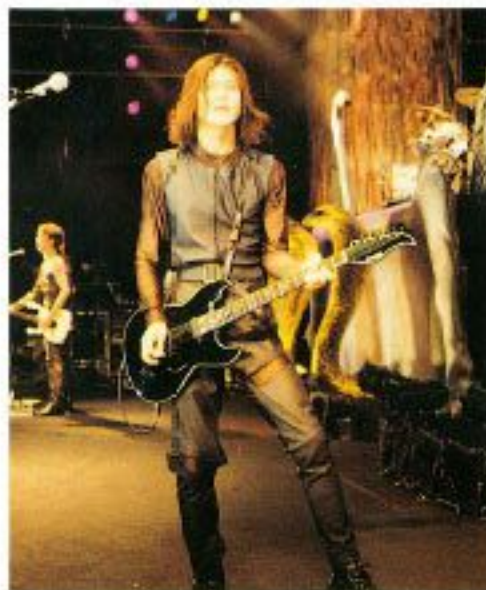
¥480,000

このモデルのみ、右用標準タイプを受注いたします。(¥480,000)



BT-460HH (HOSHINO MODEL)

¥460,000



MG-480X (HIDE MODEL)
¥480,000



MUSICIAN'S LICENCE MODEL



MG-80X

¥80,000

NECK/Maple
FINGER BOARD/Rosewood, 24F., 350R, 24.75"Scale
NECK JOINT/Bolt-On
BODY/Mahogany
PICK UP/SH-1a(front), DF-1(rear)
CONTROL/Volume, Toggle SW, Mini SW
BRIDGE/Tune O Matic, Stop Tailpiece-G
COLOR/BL



SG-90P

¥90,000

NECK/Mahogany
FINGER BOARD/Rosewood, 22F., 250R, 24.75"Scale
NECK JOINT/Set Neck
BODY/Mahogany
PICK UP/VH-1
CONTROL/2volume, 2tone, Toggle SW
BRIDGE/Tune O Matic, Stop Tailpiece-G
COLOR/Y



TEB-75MW

¥75,000

NECK/Maple
FINGER BOARD/Rosewood, 20F., 180R, 34.00"Scale
NECK JOINT/Bolt-On
BODY/Basswood
PICK UP/F.G.I. TECHNOLOGY-P
CONTROL/Volume, Treble, Bass(Active Tone Control)
BRIDGE/BB-66
COLOR/BL



COLOR/BL-SW

HOTEL MODEL
TE-95HT
¥95,000

NECK/Maple
FINGER BOARD/Rosewood, 22F, 400R, 25.50" Scale
NECK JOINT/Bolt-On
BODY/Alder
PICKUP/NEW F.G.I. TECHNOLOGY-T
CONTROL/Volume, Tone, Mini SW
BRIDGE/NEW Combination Bridge
COLOR/BL-SW, SW-BL



BL

HOTEL MODEL
MV-95HT
¥95,000

NECK/Maple
FINGER BOARD/Ebony, 22F, 150R, 24.75" Scale
NECK JOINT/Set Neck
BODY/Alder
PICKUP/F.G.I. TECHNOLOGY-1
CONTROL/Volume, Tone, Toggle SW
BRIDGE/Combination Bridge-G
COLOR/BL, PW



"BUCK-TICK" IMAI MODEL
TE-80BT

¥80,000

NECK/Maple
FINGER BOARD/Rosewood, 24F, 350R, 25.50"Scale
NECK JOINT/Bolt-On
BODY/Basswood
PICKUP/NEW F.G.I. TECHNOLOGY-T
CONTROL/Volume, Mini SW. x2
BRIDGE/NEW Combination Bridge
COLOR/SW



"BUCK-TICK" IMAI MODEL
STJ-80BT

¥80,000

NECK/Maple
FINGER BOARD/Rosewood, 24F, 350R, 25.50"Scale
NECK JOINT/Bolt-On
BODY/Basswood
PICKUP/NEW F.G.I. TECHNOLOGY-T
CONTROL/Volume, None, Toggle SW.
BRIDGE/NEW Combination Bridge
COLOR/SW



"BUCK-TICK" HO-SHINO MODEL
TE-75BT

¥75,000

NECK/Maple
FINGER BOARD/Rosewood, 22F, 350R, 25.50"Scale
NECK JOINT/Bolt-On
BODY/Basswood
PICKUP/NEW F.G.I. TECHNOLOGY-T
CONTROL/Volume, Mini SW.
BRIDGE/NEW Combination Bridge
COLOR/SW



ST-85NT

¥85,000

NECK/Maple
FINGER BOARD/Rosewood, 22F, 350R, 25.50"Scale
NECK JOINT/Bolt-On
BODY/Soft Maple
PICK UP/VS-2(front, center), VH-3(rear)
CONTROL/Volume, 2tone, 5way Lever SW
BRIDGE/FRT-48
COLOR/VR-body, BL-neck



YB-75

¥75,000

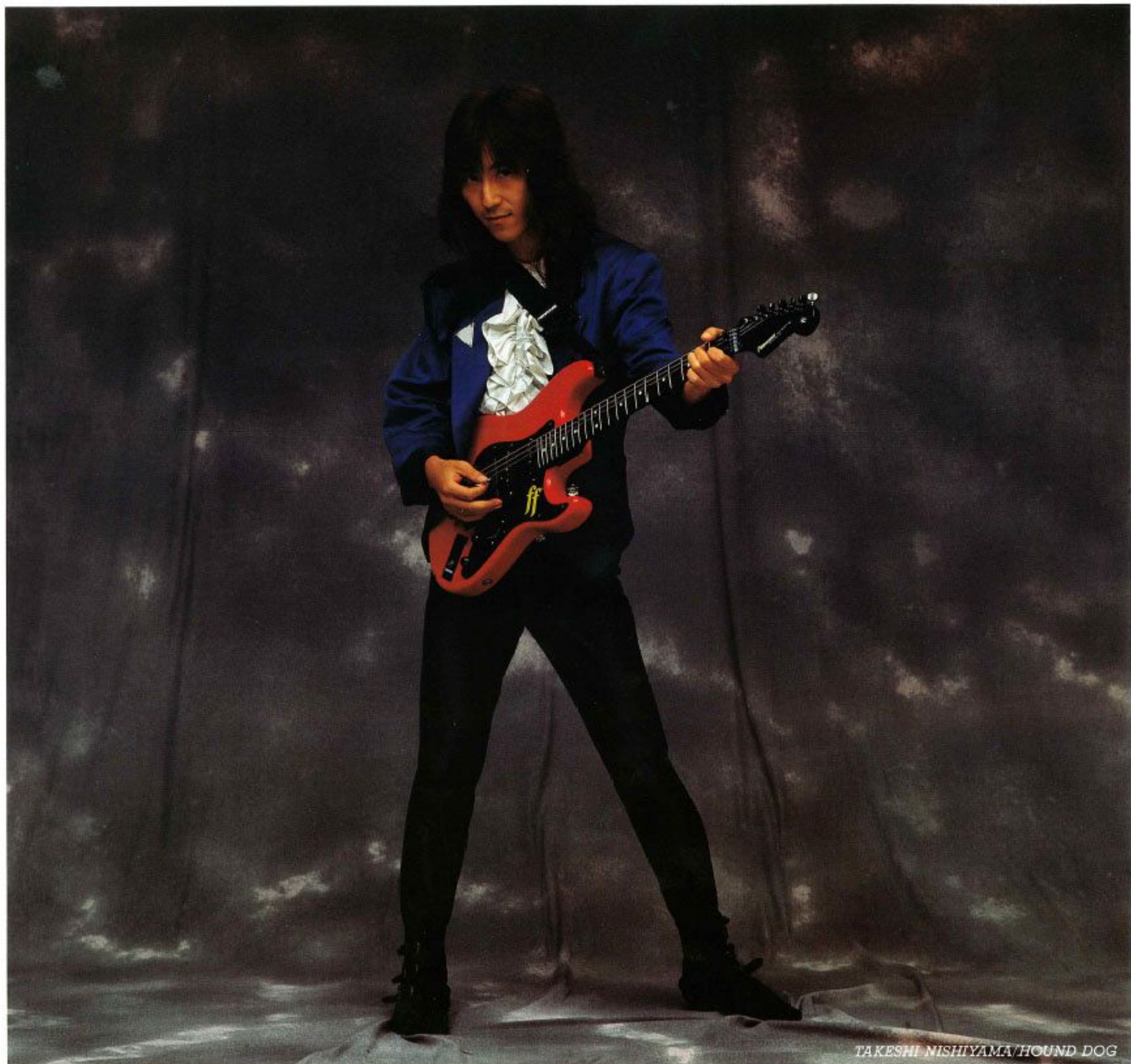
NECK/Maple
FINGER BOARD/Maple, 20F, 170R, 34.00"Scale
NECK JOINT/Bolt-On
BODY/Maple
PICK UP/WJB-2s(front), WJB-2B(rear)
CONTROL/2volume, 1tone
BRIDGE/Combination-Cr
COLOR/W



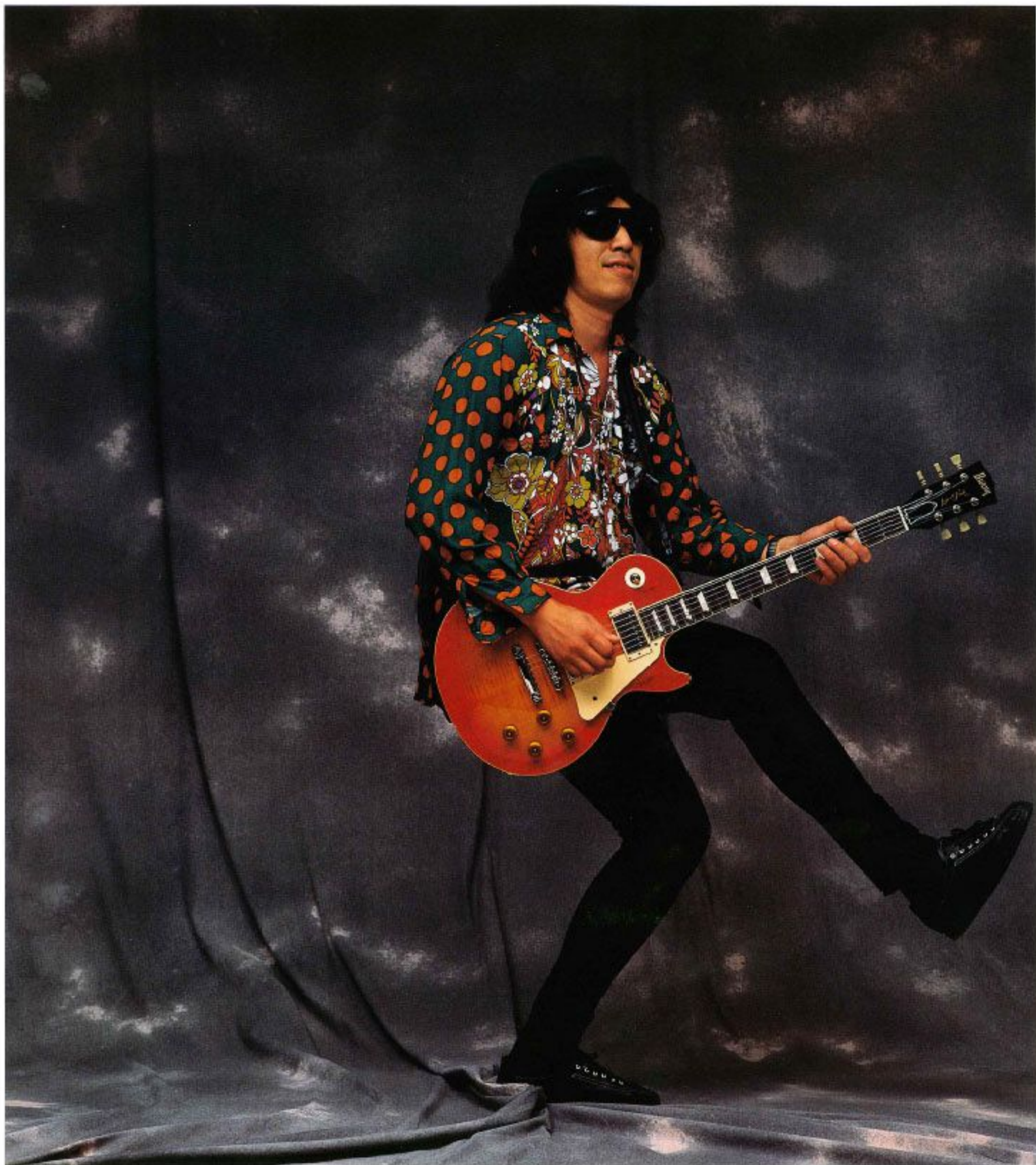
FB-80Z

¥80,000

NECK/Maple
FINGER BOARD/Rosewood, 22F, 250R, 24.75"Scale
NECK JOINT/Bolt-On
BODY/Mahogany
PICK UP/VH-1(front, center), VH-6(rear)
CONTROL/2volume, 2tone, Toggle SW
BRIDGE/Tune O Machis, Stop Tailpiece-M
COLOR/FR



TAKESHI NISHIYAMA/HOUND DOG



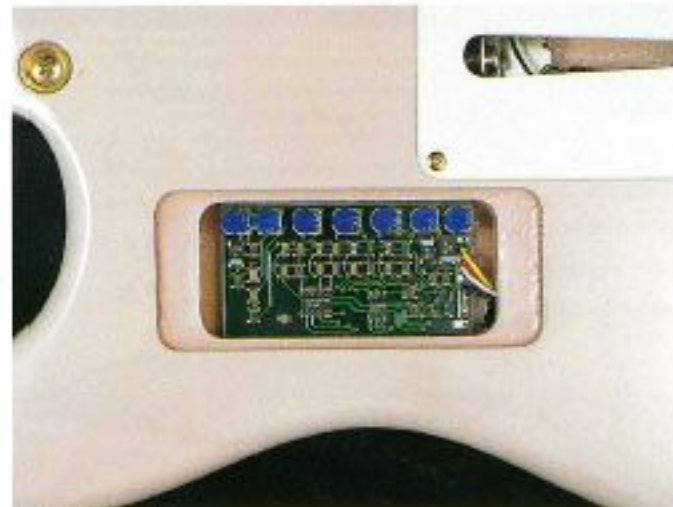
THE FUNCTION "FST"

“ザ・ファンクション”——それは、フェルナンデスのギター・テクノロジーが、機能性、演奏性、そしてサウンドを極限まで追求した、クオリティの融合体だ。

THE FUNCTION
FST-140



EVANS P.U.



SHADOW EQ.



FRT TREMOLO SYSTEM