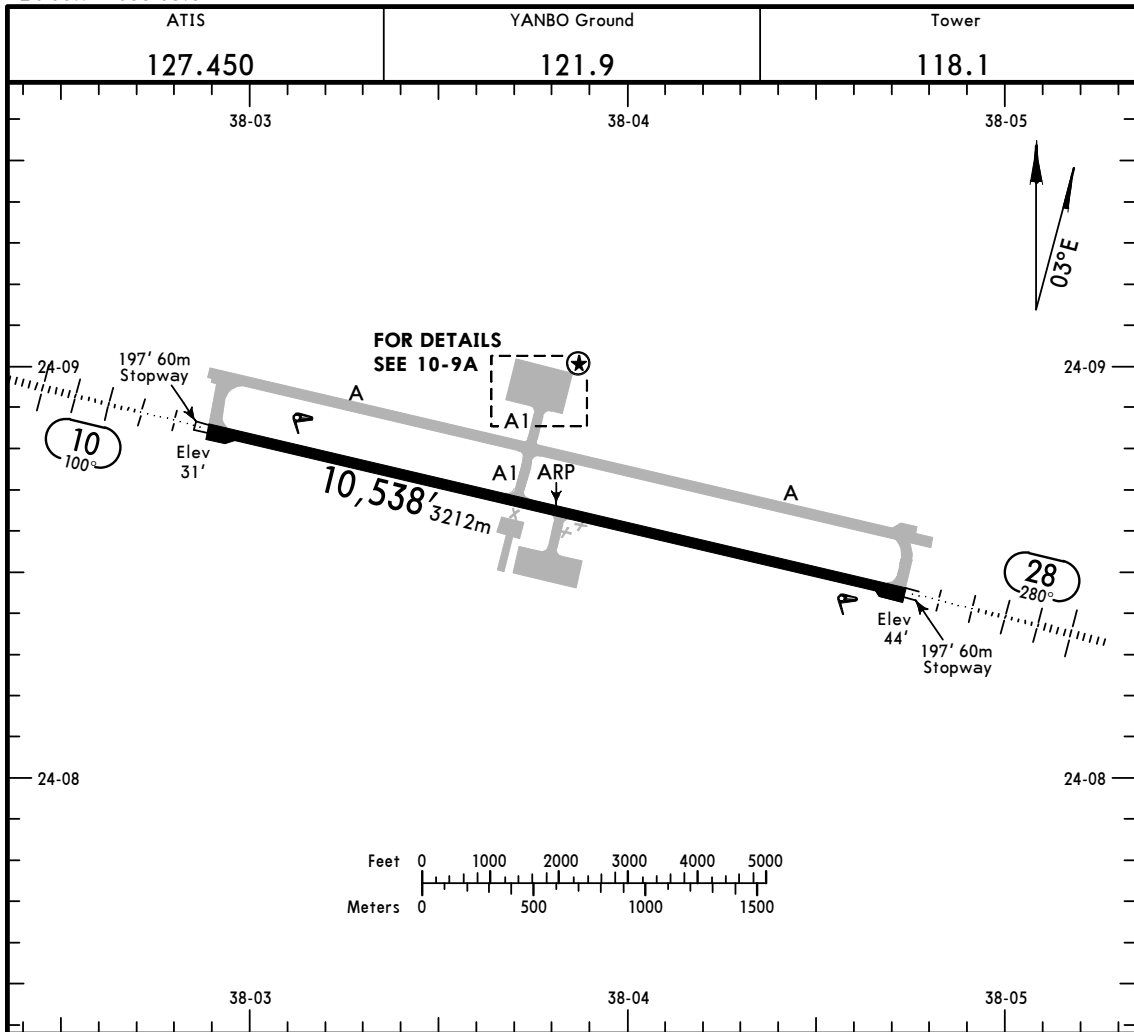


OEYN/YNB  
 Apt Elev 44'  
 N24 08.7 E038 03.8

**JEPPESEN**  
 7 JUL 17  
 Eff 20 Jul (10-9)

**YENBO, SAUDI ARABIA**  
 PRINCE ABDULMOHSIN BIN ABDULAZIZ



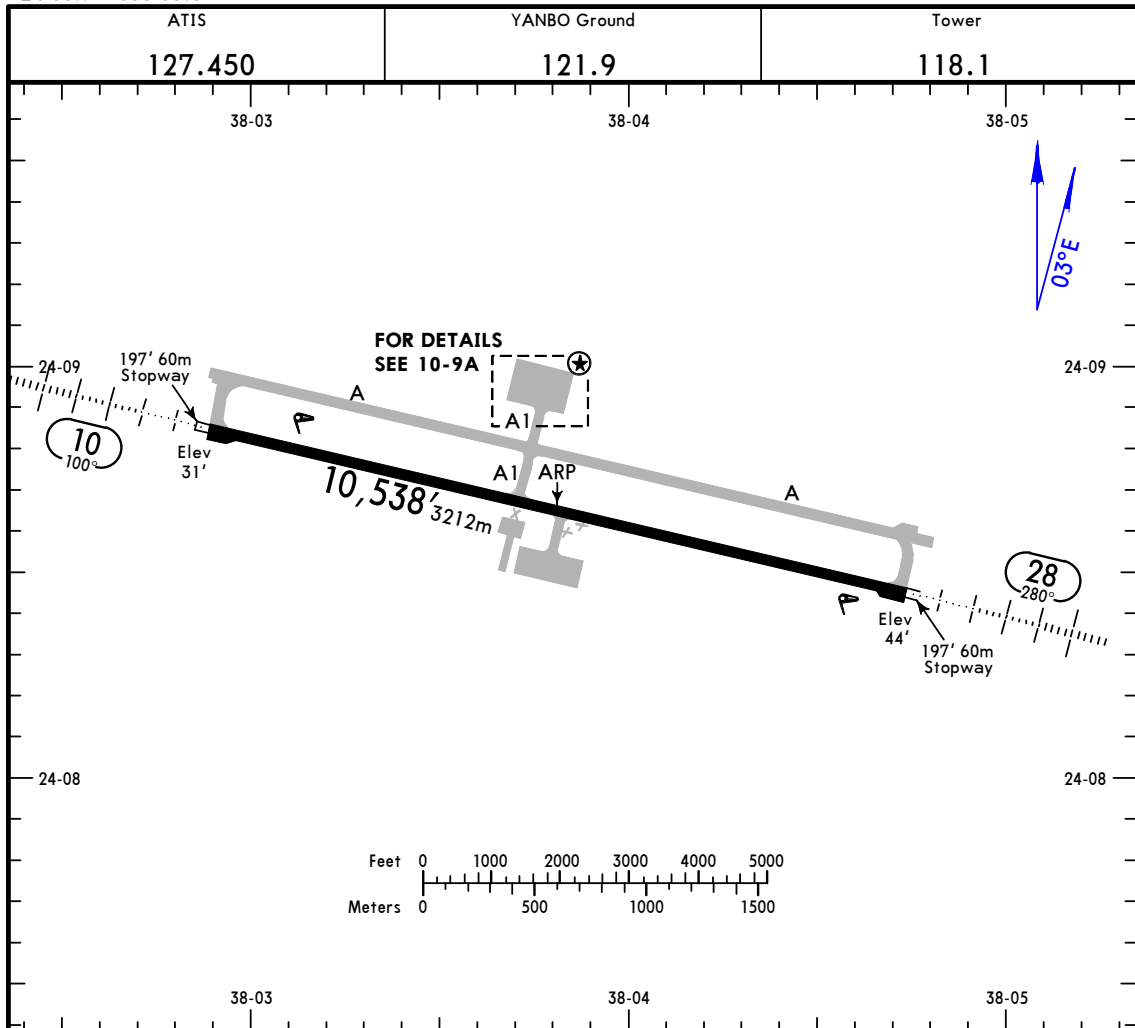
**ADDITIONAL RUNWAY INFORMATION**

RWY	SURFACE	USABLE LENGTHS			WIDTH
		Threshold	Landing Beyond Glide Slope	TAKE-OFF	
10 28	HIRL (60m) HIALS PAPI (angle 3.0°)		9505' 2897m		148' 45m

**COMMUNICATION FAILURE:**  
 Squawk 7600 mode A/3.

**TAKE-OFF**

All Rwy's		STD
1 Eng	Adequate Vis Ref NOT AUTHORIZED	1600m
2 Eng		800m
3 & 4 Eng	400m	



ADDITIONAL RUNWAY INFORMATION

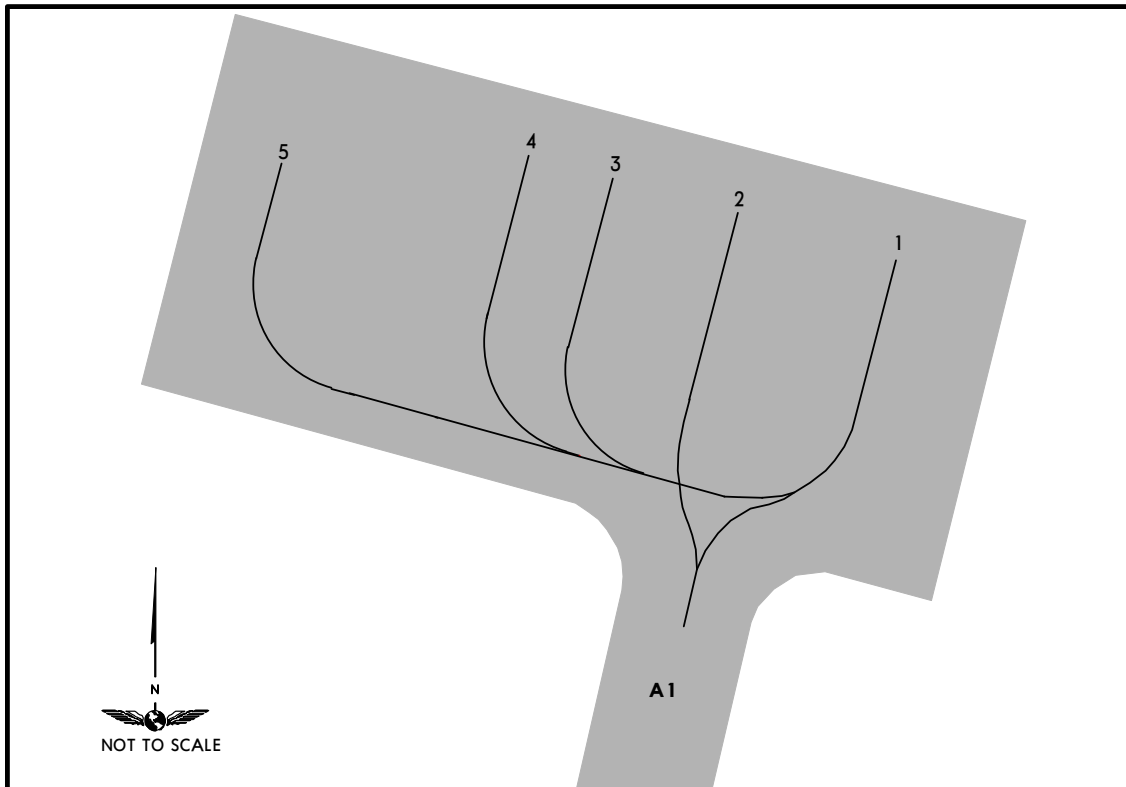
RWY	LANDING BEYOND	USABLE LENGTHS		TAKE-OFF	WIDTH
		Threshold	Glide Slope		
10 28	HIRL (60m) HIALS PAPI (angle 3.0°)		9505' 2897m		148' 45m

**COMMUNICATION FAILURE:**  
 Squawk 7600 mode A/3.

TAKE-OFF

All Rwy's

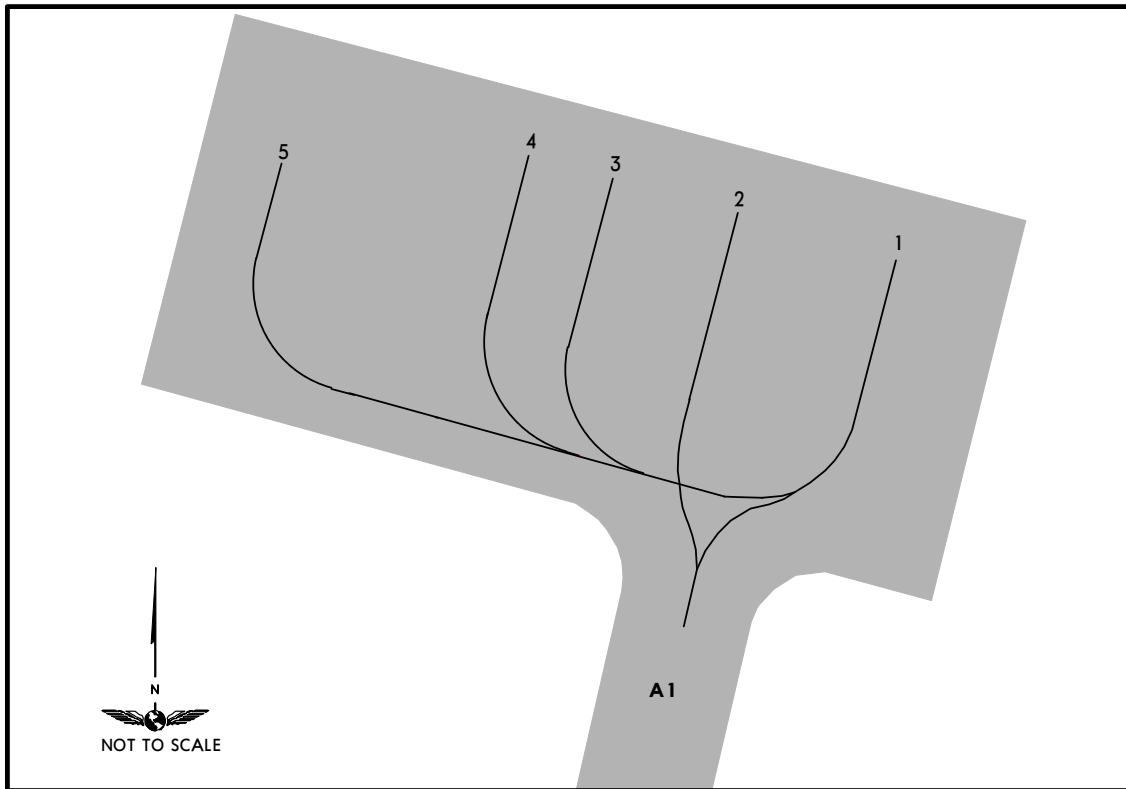
	Adequate Vis Ref	STD
	2 Eng	400m
3 & 4 Eng	800m	



**PARKING/PUSH-BACK**

Parking stand 5 is exclusively for royal/vip parking. Commercial ACFT are not allowed to use stand 5 without prior approval from concerned authorities responsible for the apt operations.

All parking stands except stand 5 require power-in push-out (nose-in) operations.



**PARKING/PUSH-BACK**

Parking stand 5 is exclusively for royal/vip parking. Commercial ACFT are not allowed to use stand 5 without prior approval from concerned authorities responsible for the apt operations.

All parking stands except stand 5 require power-in push-out (nose-in) operations.

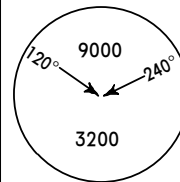
OEYN/YNB  
PRINCE ABDULMOHSIN  
BIN ABDULAZIZ

23 JUN 17

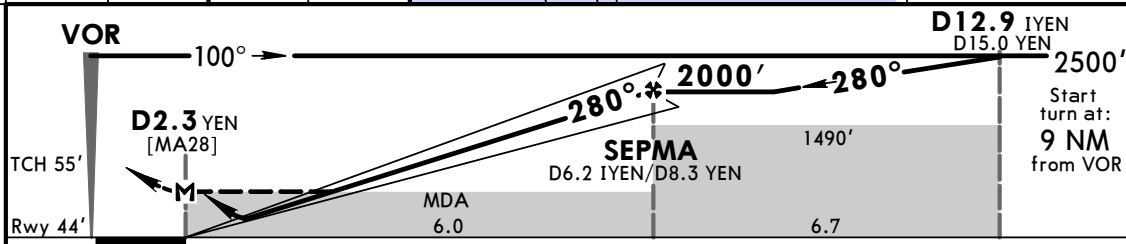
(11-1)

YENBO, SAUDI ARABIA  
ILS or LOC Rwy 28

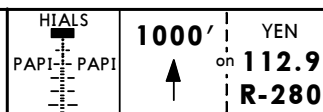
ATIS <b>127.450</b>		YANBO Tower <b>118.1</b>		Ground <b>121.9</b>	
LOC IYEN <b>111.5</b>	Final Apch Crs <b>280°</b>	GS <b>SEPMA</b> 2000' (1956')	ILS DA(H) <b>244'</b> (200')	Apt Elev 44' Rwy 44'	
<b>MISSED APCH: Climb on R-280 to 1000', then turn LEFT direct to VOR climbing to 3000' and hold. Do not turn before MAP. MAX 230 KT.</b>					
Alt Set: hPa		Rwy Elev: 2 hPa		Trans level: FL 150	
				Trans alt: 13000'	



RECOMMENDED ALTITUDES		RECOMMENDED ALTITUDES	
LOC (GS out)		LOC (GS out)	
IYEN DME	ALTITUDE	YEN DME	ALTITUDE
6.0	1952'	8.0	1905'
5.0	1634'	7.0	1589'
4.0	1316'	6.0	1273'
3.0	997'	5.0	957'
2.0	679'	4.0	641'
1.0	360'		



Gnd speed-Kts	70	90	100	120	140	160
ILS GS or LOC Descent Angle	3.00°	372	478	531	637	743
MAP at D2.3 YEN						



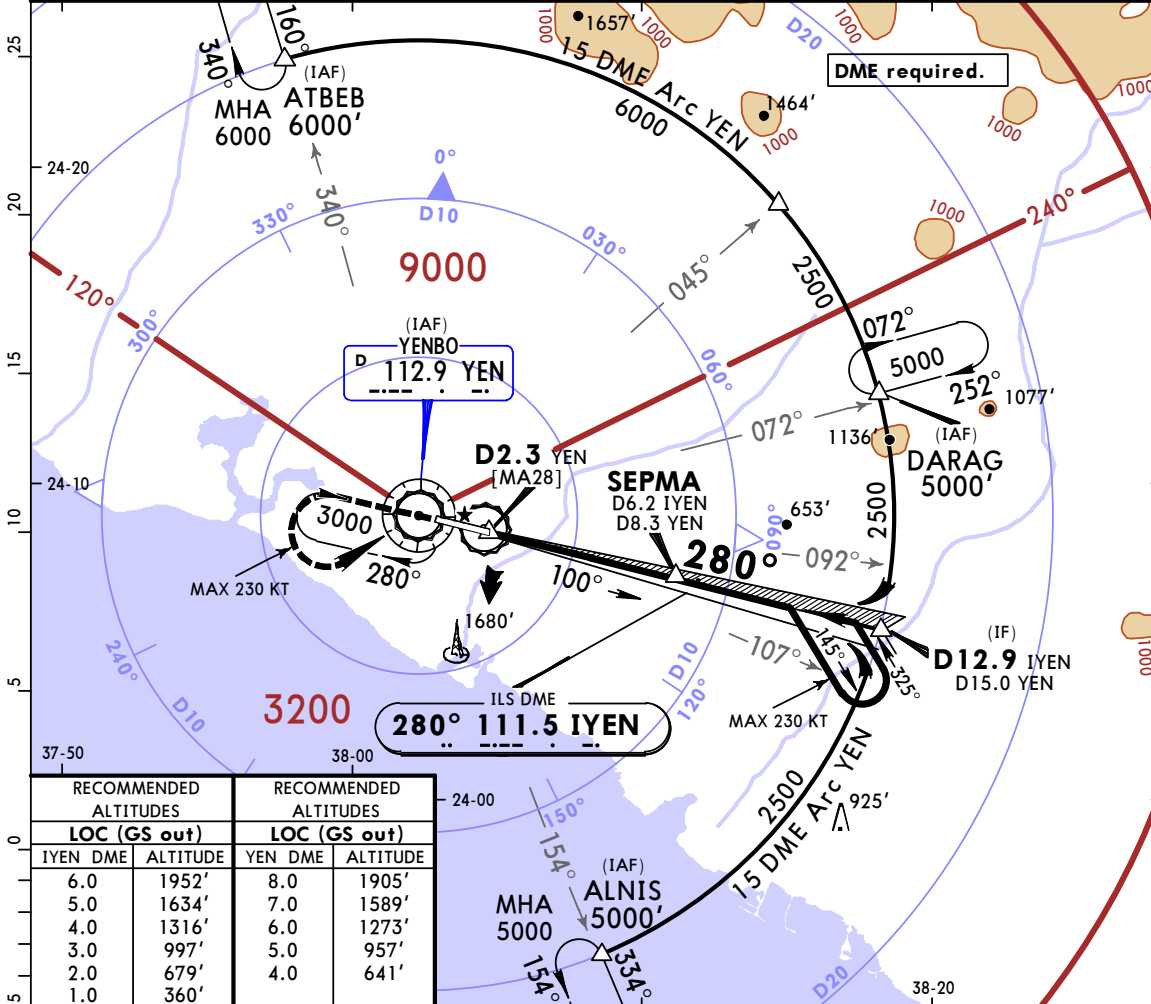
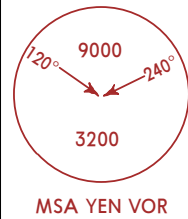
STRAIGHT-IN LANDING RWY 28				CIRCLE-TO-LAND	
ILS		LOC (GS out)		Not authorized South of rwy	
DA(H) 244' (200')		MDA(H) 380' (336')			
FULL	ALS out	FULL	ALS out	Max Kts	MDA(H)
A				100	480' (436') 1600m
B	800m	1200m	800m	135	540' (496') 1600m
C			1200m	180	640' (596') 2400m
D				205	740' (696') 3600m

PANS OPS

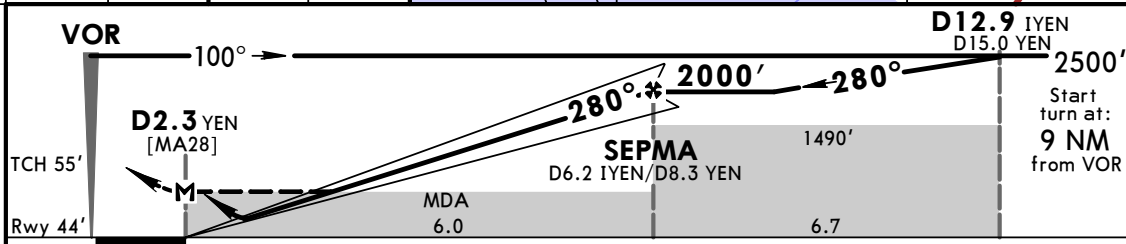
CHANGES: Printing sequence. Database identifiers.

© JEPPESEN, 2008, 2017. ALL RIGHTS RESERVED.

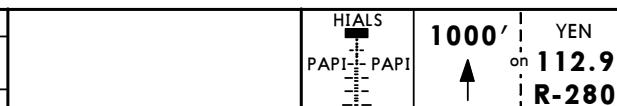
ATIS <b>127.450</b>		YANBO Tower <b>118.1</b>		Ground <b>121.9</b>	
LOC IYEN <b>111.5</b>	Final Apch Crs <b>280°</b>	GS SEPMA <b>2000'</b> (1956')	ILS DA(H) <b>244'</b> (200')	Apt Elev 44' Rwy 44'	
<b>MISSED APCH:</b> Climb on R-280 to 1000', then turn LEFT direct to VOR climbing to 3000' and hold. Do not turn before MAP. MAX 230 KT.					
Alt Set: hPa		Rwy Elev: 2 hPa		Trans level: FL 150	
				Trans alt: 13000'	



RECOMMENDED ALTITUDES		RECOMMENDED ALTITUDES	
LOC (GS out)		LOC (GS out)	
IYEN DME	ALTITUDE	YEN DME	ALTITUDE
6.0	1952'	8.0	1905'
5.0	1634'	7.0	1589'
4.0	1316'	6.0	1273'
3.0	997'	5.0	957'
2.0	679'	4.0	641'
1.0	360'		



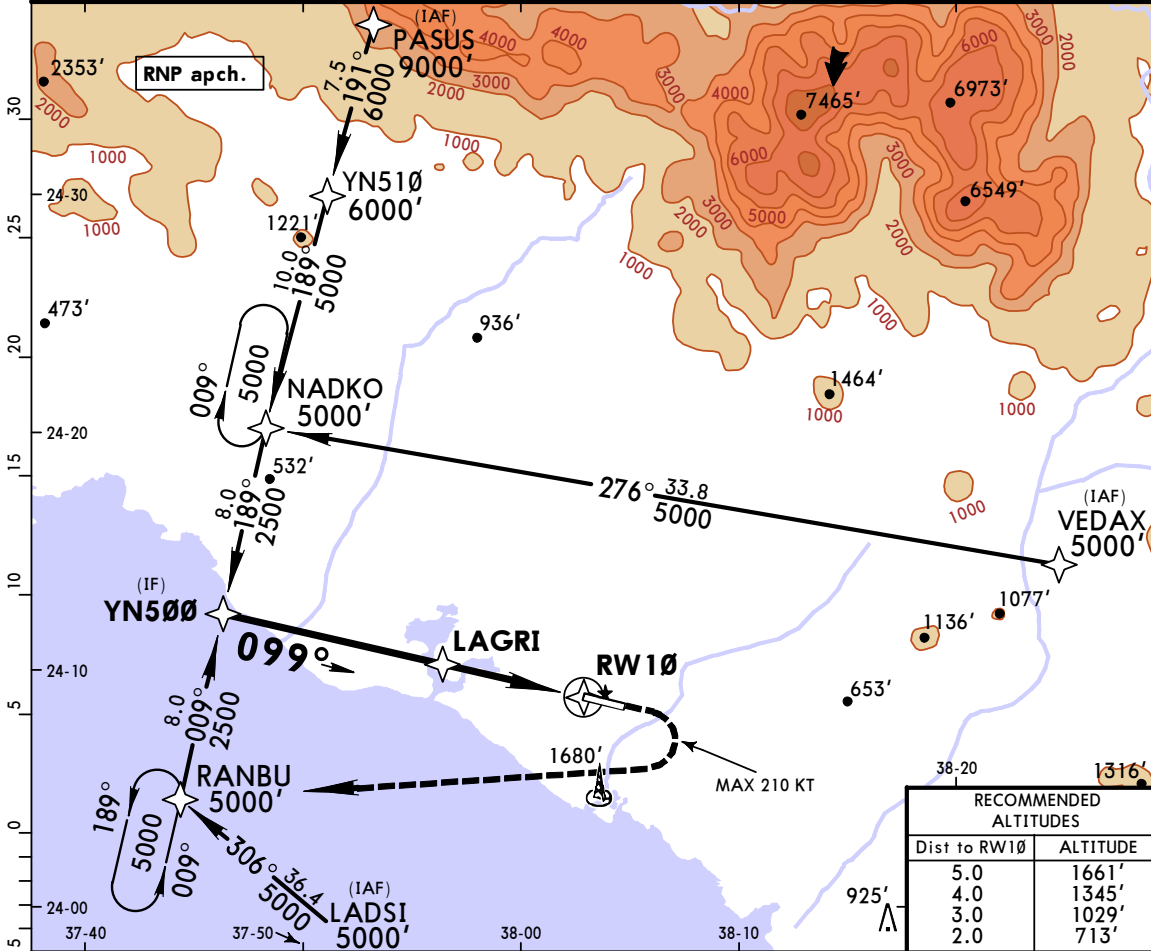
Gnd speed-Kts	120	140	160	180
ILS GS or LOC Descent Angle	3.00°	637	743	849
MAP at D2.3 YEN				



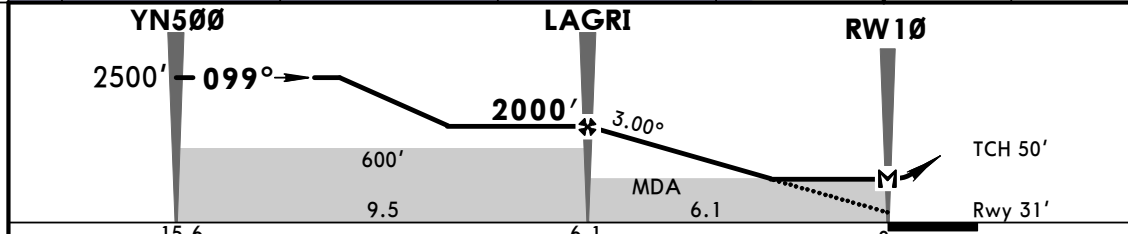
STRAIGHT-IN LANDING RWY 28				CIRCLE-TO-LAND	
ILS		LOC (GS out)		Not authorized South of rwy	
DA(H) 244' (200')		MDA(H) 380' (336')		MDA(H)	
FULL	ALS out	FULL	ALS out	Max Kts	
C	800m	1200m	1600m	180	640' (596') 2400m
D	800m	1200m	1600m	205	740' (696') 3600m

PANS OPS

ATIS 127.450		YANBO Tower 118.1		Ground 121.9	
RNAV	Final Apch Crs <b>099°</b>	Procedure Alt <b>LAGRI</b> 2000' (1969')	LNAV MDA(H) <b>430'</b> (399')	Apt Elev 44'	Rwy 31'
<b>MISSED APCH: Climb STRAIGHT AHEAD to 1500', then turn RIGHT</b> direct to RANBU at 5000' and hold. Do not turn before MAP. MAX 210 KT.					
Alt Set: hPa		Rwy Elev: 1 hPa	Trans level: FL 150	Trans alt: 13000'	MSA ARP



Dist to RW10	ALTITUDE
5.0	1661'
4.0	1345'
3.0	1029'
2.0	713'



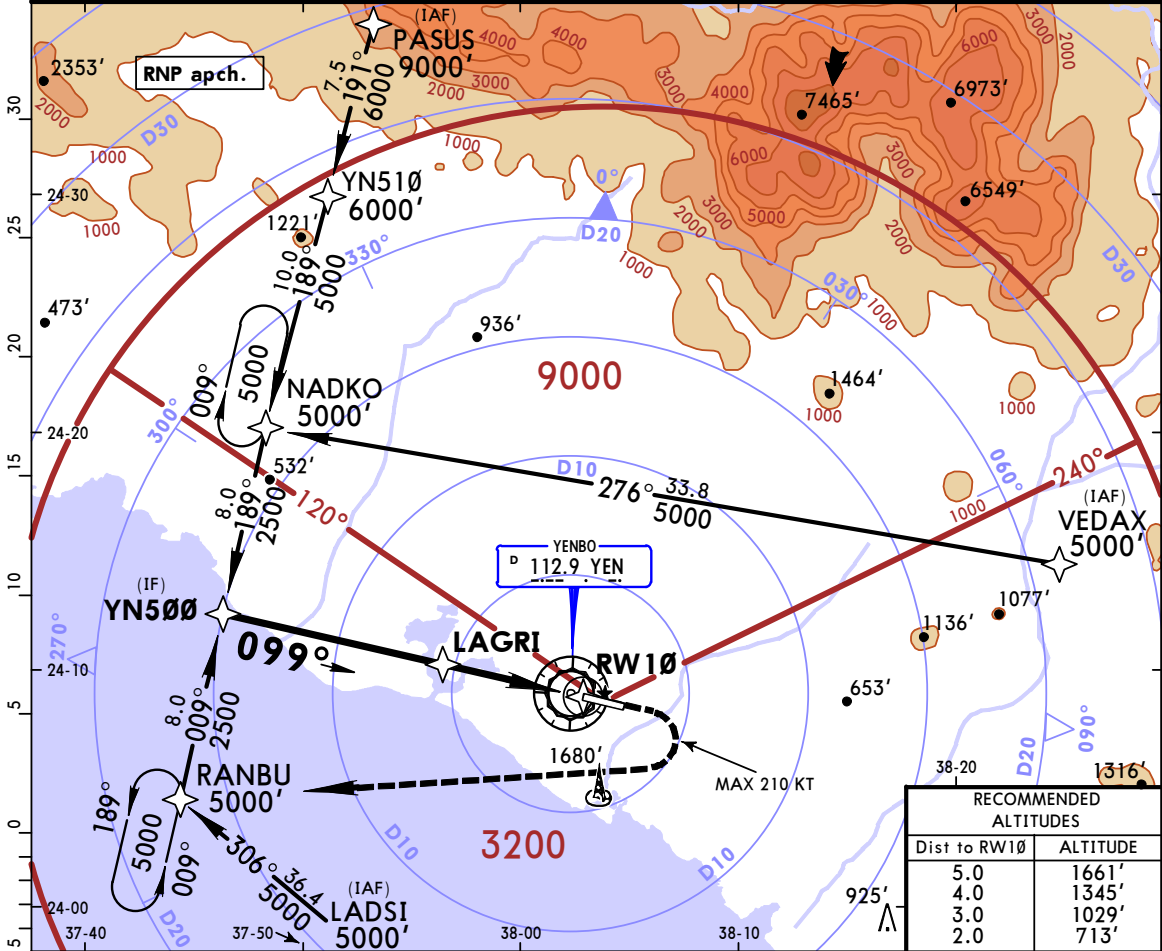
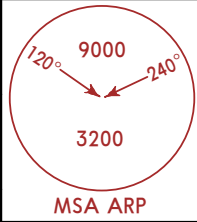
Gnd speed-Kts	70	90	100	120	140	160
Descent Angle 3.00°	372	478	531	637	743	849
MAP at RW10						

HIALS 1500' RANBU  
PAPI PAPI PAPI  
↑ RT

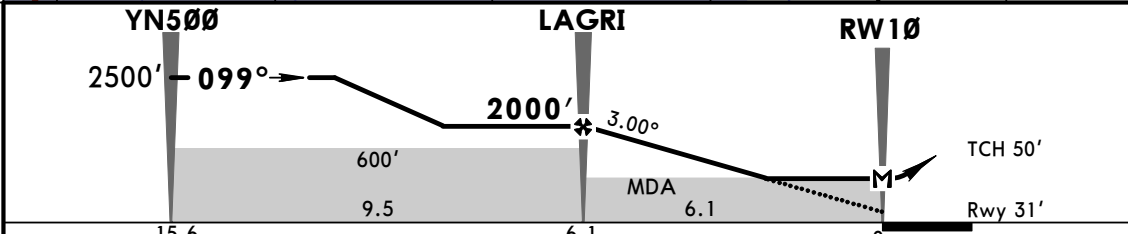
PANS OPS	STRAIGHT-IN LANDING RWY 10		Max Kts	CIRCLE-TO-LAND	
	LNAV	ALS out		MDA(H)	
A			100	480' (436')	1600m
B	1100m	1600m	135	540' (496')	1600m
C			180	640' (596')	2400m
D	1600m	2000m	205	740' (696')	3600m

CHANGES: Procedure identifier. Procedure revised.

ATIS 127.450		YANBO Tower 118.1		Ground 121.9	
RNAV	Final Apch Crs <b>099°</b>	Procedure Alt <b>LAGRI</b> 2000' (1969')	LNAV MDA(H) <b>430'</b> (399')	Apt Elev 44'	Rwy 31'
<b>MISSED APCH: Climb STRAIGHT AHEAD to 1500', then turn RIGHT direct to RANBU at 5000' and hold. Do not turn before MAP. MAX 210 KT.</b>					
Alt Set: hPa		Rwy Elev: 1 hPa	Trans level: FL 150	Trans alt: 13000'	



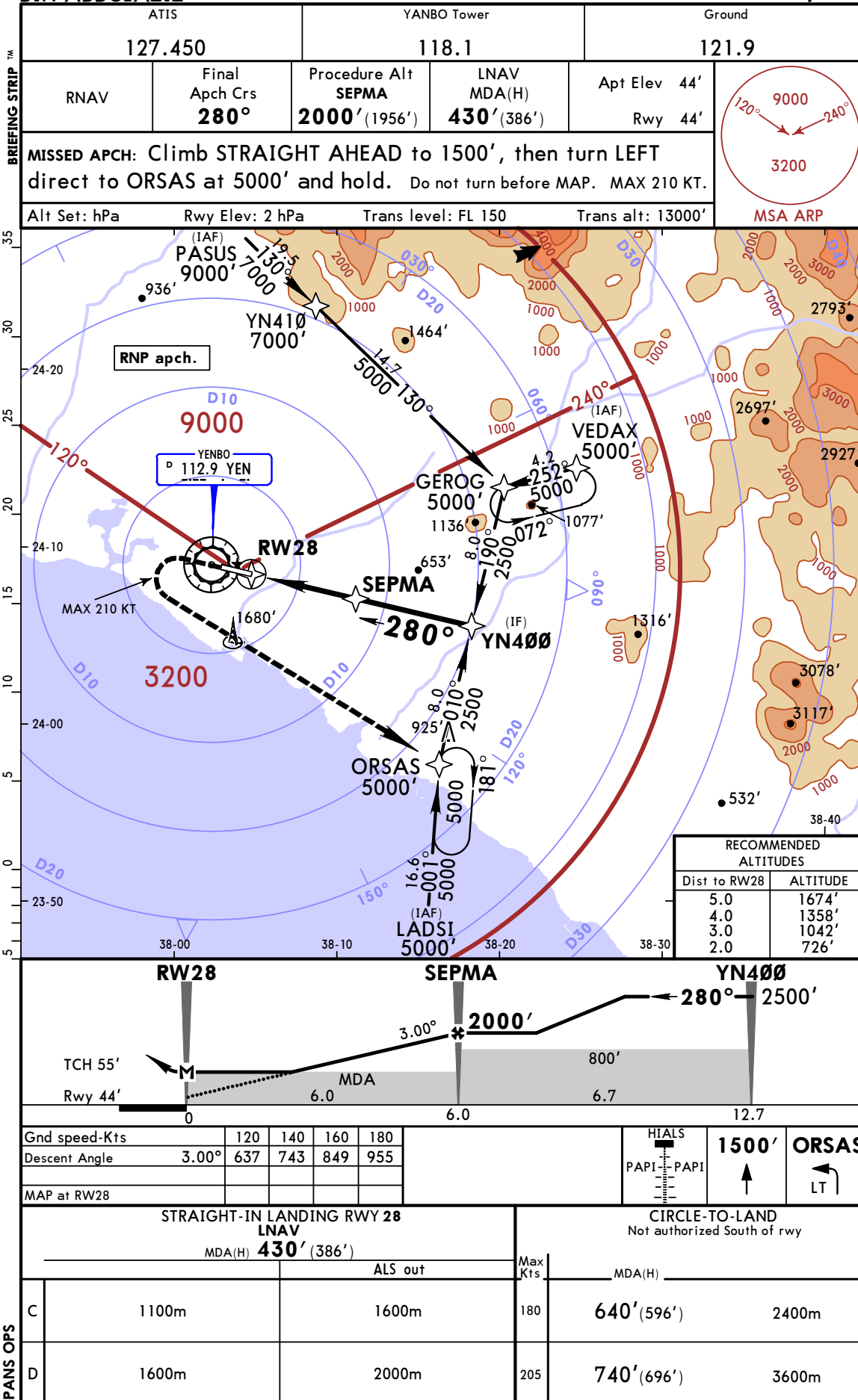
RECOMMENDED ALTITUDES	
Dist to RW10	ALTITUDE
5.0	1661'
4.0	1345'
3.0	1029'
2.0	713'



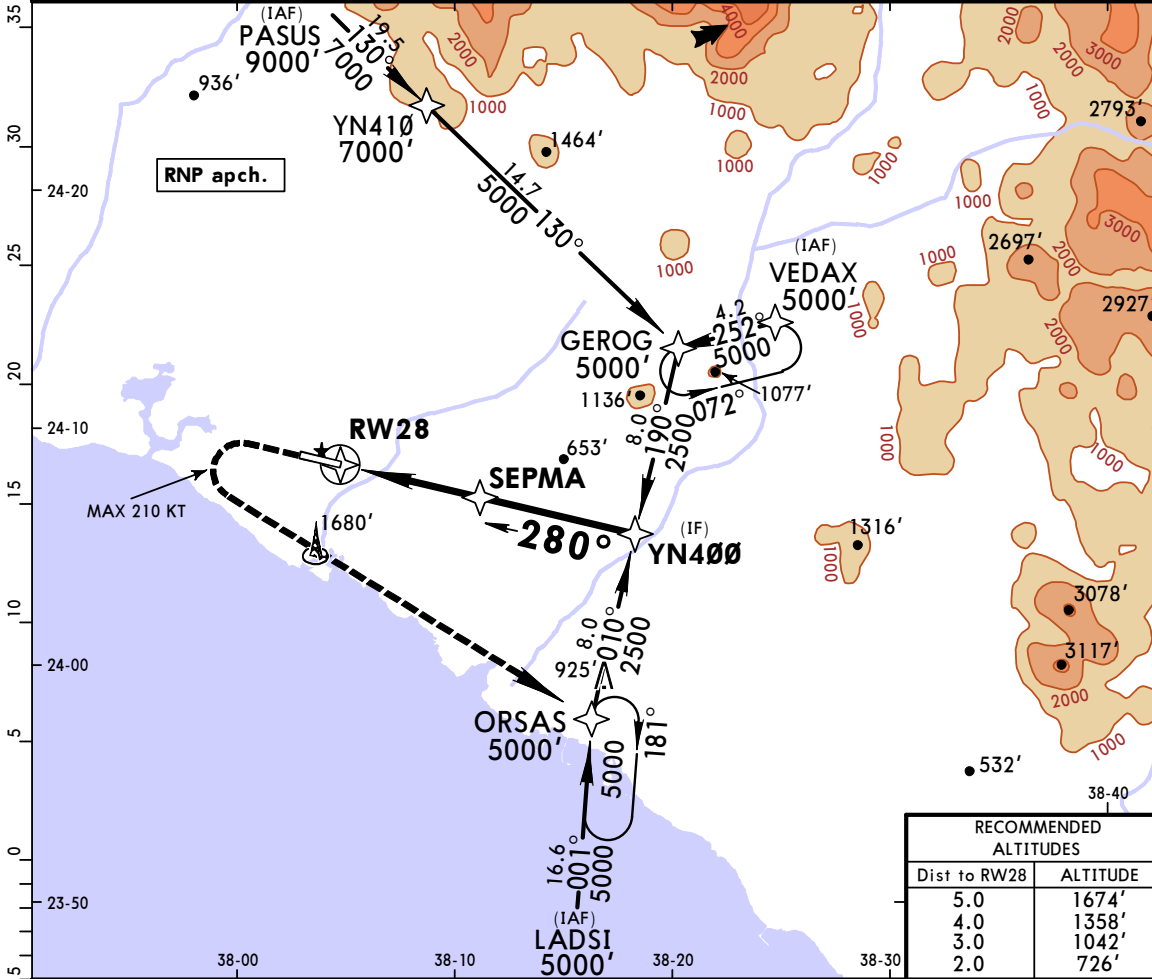
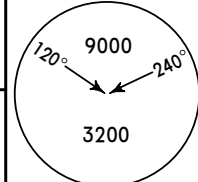
MAP at RW10	STRAIGHT-IN LANDING RWY 10 LNAV MDA(H) <b>430'</b> (399')		CIRCLE-TO-LAND Not authorized South of rwy	
-------------	---	--	---	--

PANS OPS	STRAIGHT-IN LANDING RWY 10		Max Kts	CIRCLE-TO-LAND	
	ALS out	MDA(H)		MDA(H)	
C	1100m	1600m	180	640' (596')	2400m
D	1600m	2000m	205	740' (696')	3600m

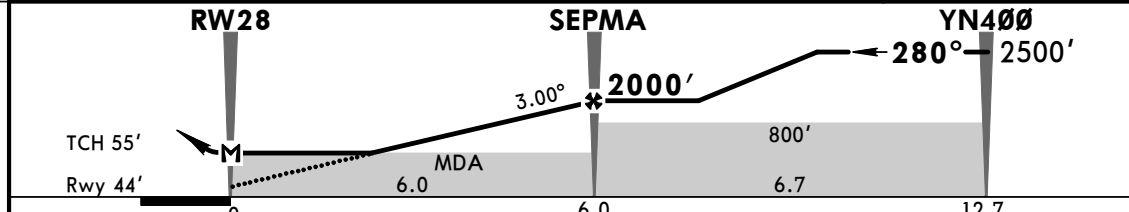




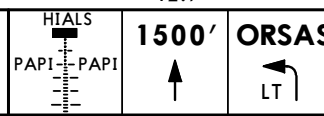
ATIS 127.450		YANBO Tower 118.1		Ground 121.9	
RNAV	Final Apch Crs <b>280°</b>	Procedure Alt <b>SEPMA</b> 2000' (1956')	LNAV MDA(H) <b>430'</b> (386')	Apt Elev 44'	Rwy 44'
<b>MISSED APCH: Climb STRAIGHT AHEAD to 1500', then turn LEFT direct to ORSAS at 5000' and hold. Do not turn before MAP. MAX 210 KT.</b>					
Alt Set: hPa		Rwy Elev: 2 hPa	Trans level: FL 150	Trans alt: 13000'	



Dist to RW28	ALTITUDE
5.0	1674'
4.0	1358'
3.0	1042'
2.0	726'

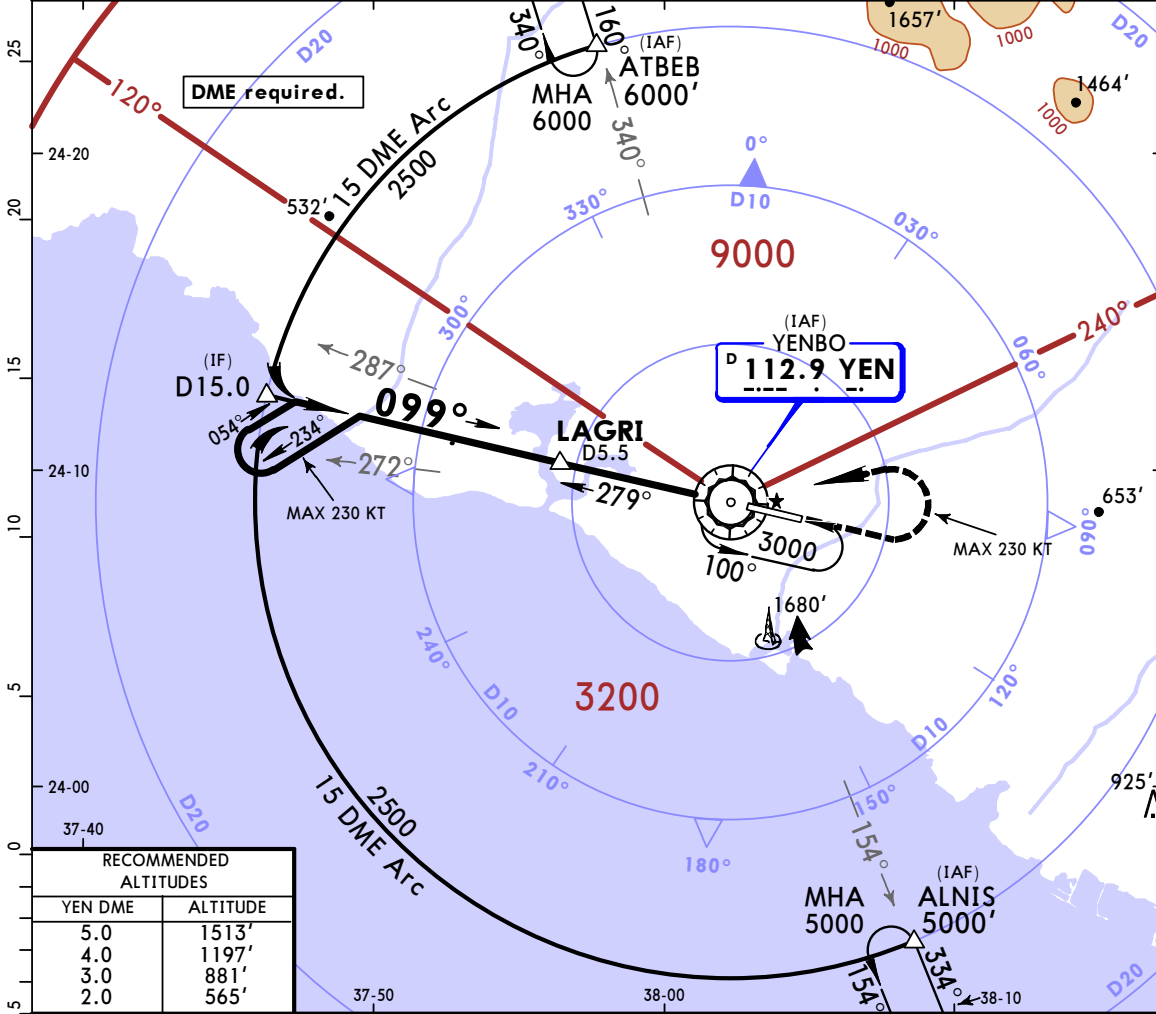
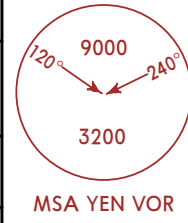


Gnd speed-Kts	70	90	100	120	140	160
Descent Angle 3.00°	372	478	531	637	743	849
MAP at RW28						

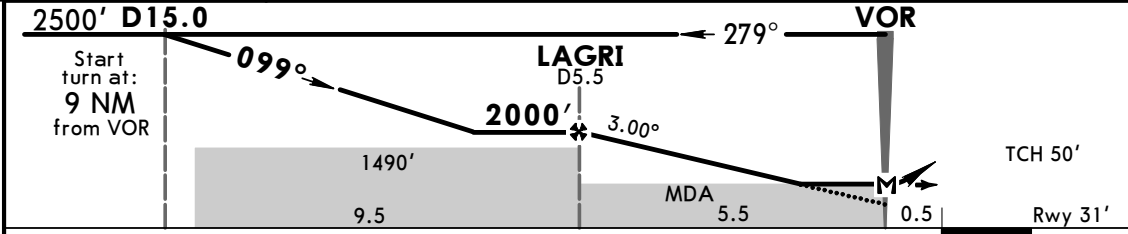


STRAIGHT-IN LANDING RWY 28 LNAV MDA(H) 430' (386')			CIRCLE-TO-LAND Not authorized South of rwy	
	ALS out	Max Kts	MDA(H)	
A		100	480' (436')	1600m
B	1100m	135	540' (496')	1600m
C		180	640' (596')	2400m
D	1600m	205	740' (696')	3600m

ATIS 127.450		YANBO Tower 118.1		Ground 121.9	
VOR YEN <b>112.9</b>	Final Apch Crs <b>099°</b>	Procedure Alt <b>LAGRI</b> 2000' (1969')	MDA(H) <b>450'</b> (419')	Apt Elev 44' Rwy 31'	
<b>MISSED APCH:</b> Climb on R-099 to 1000', then turn LEFT direct to VOR climbing to 3000' and hold. Do not turn before MAP. MAX 230 KT.					
Alt Set: hPa		Rwy Elev: 1 hPa		Trans level: FL 150	
				Trans alt: 13000'	



RECOMMENDED ALTITUDES	
YEN DME	ALTITUDE
5.0	1513'
4.0	1197'
3.0	881'
2.0	565'

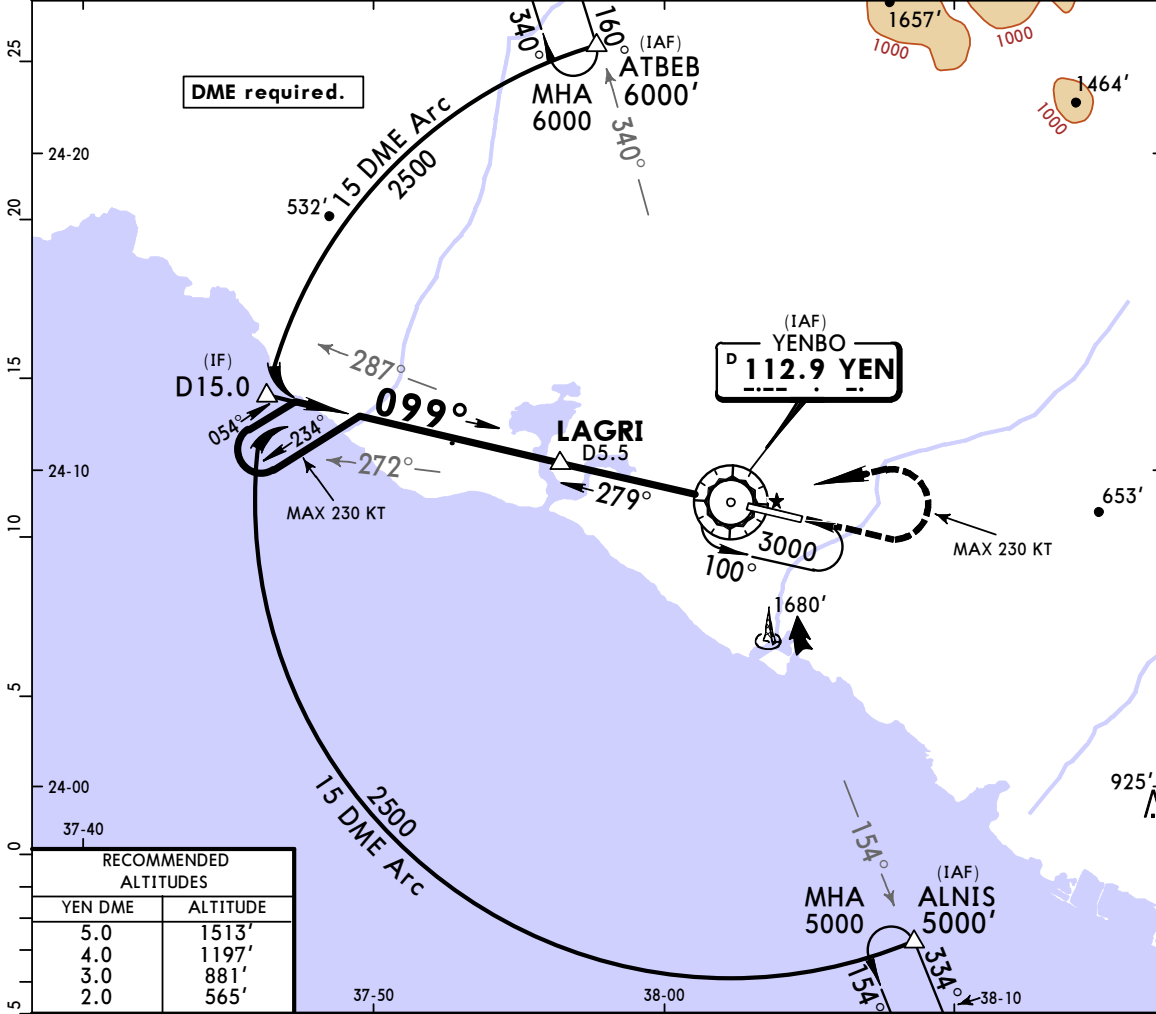


Gnd speed-Kts	120	140	160	180	HIALS PAPI-PAPI 1000' on 112.9 R-099
Descent Angle	3.00°	637	743	849	
MAP at VOR					

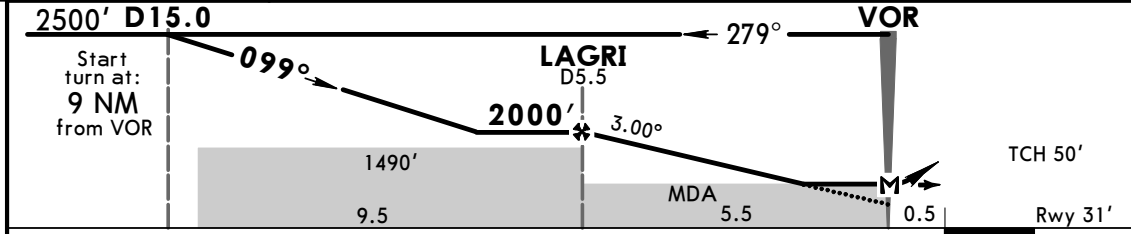
	STRAIGHT-IN LANDING RWY 10		CIRCLE-TO-LAND	
	MDA(H) 450' (419')		Not authorized South of rwy	
	ALS out	Max Kts	MDA(H)	
C	1200m	180	640' (596')	2400m
D	1600m	205	740' (696')	3600m

CHANGES: Procedure identifier. Procedure revised.

ATIS 127.450		YANBO Tower 118.1		Ground 121.9		<p>MSA YEN VOR</p>
VOR YEN <b>112.9</b>	Final Apch Crs <b>099°</b>	Procedure Alt <b>LAGRI</b> 2000' (1969')	MDA(H) <b>450'</b> (419')	Apt Elev 44' Rwy 31'		
<p><b>MISSED APCH:</b> Climb on R-099 to 1000', then turn LEFT direct to VOR climbing to 3000' and hold. Do not turn before MAP. MAX 230 KT.</p>						
Alt Set: hPa		Rwy Elev: 1 hPa		Trans level: FL 150		Trans alt: 13000'



RECOMMENDED ALTITUDES	
YEN DME	ALTITUDE
5.0	1513'
4.0	1197'
3.0	881'
2.0	565'

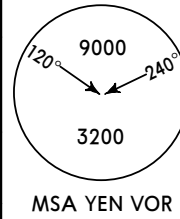


Gnd speed-Kts	70	90	100	120	140	160	
Descent Angle 3.00°	372	478	531	637	743	849	
MAP at VOR							

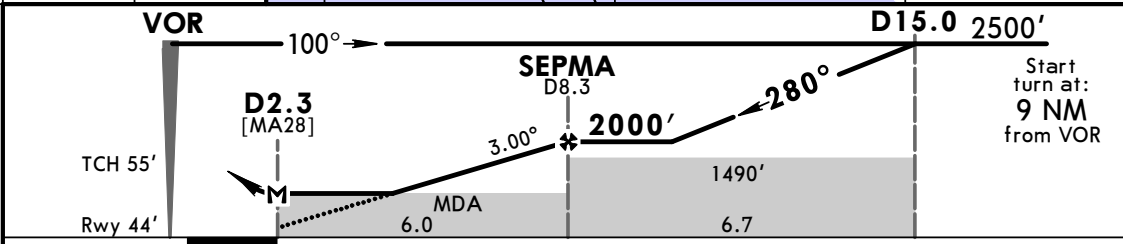
STRAIGHT-IN LANDING RWY 10			CIRCLE-TO-LAND		
MDA(H) 450' (419')			Not authorized South of rwy		
	ALS out	Max Kts	MDA(H)		
A		100	480' (436')	1600m	
B	1200m	135	540' (496')	1600m	
C		180	640' (596')	2400m	
D	1600m	205	740' (696')	3600m	

PANS OPS

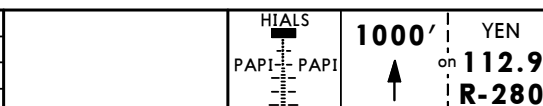
ATIS 127.450		YANBO Tower 118.1		Ground 121.9	
VOR YEN <b>112.9</b>	Final Apch Crs <b>280°</b>	Procedure Alt <b>SEPMA</b> 2000' (1956')	MDA(H) <b>430'</b> (386')	Apt Elev 44' Rwy 44'	
<b>MISSED APCH:</b> Climb on R-280 to 1000', then turn LEFT direct to VOR climbing to 3000' and hold. Do not turn before MAP. MAX 230 KT.					
Alt Set: hPa		Rwy Elev: 2 hPa		Trans level: FL 150	
				Trans alt: 13000'	



RECOMMENDED ALTITUDES	
YEN DME	ALTITUDE
8.0	1905'
7.0	1589'
6.0	1273'
5.0	957'
4.0	641'



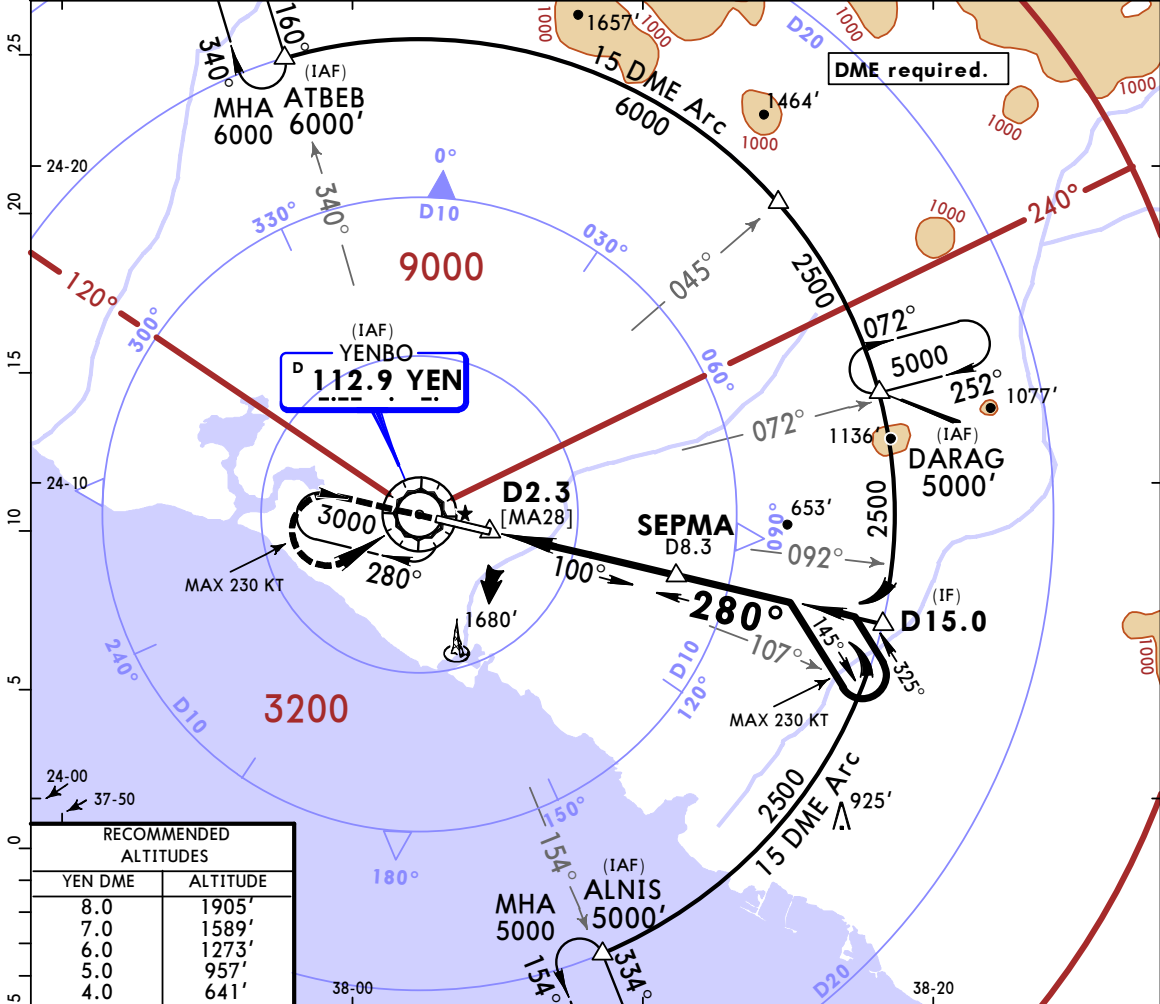
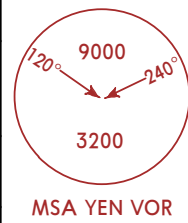
Gnd speed-Kts	70	90	100	120	140	160
Descent Angle 3.00°	372	478	531	637	743	849
MAP at D2.3						



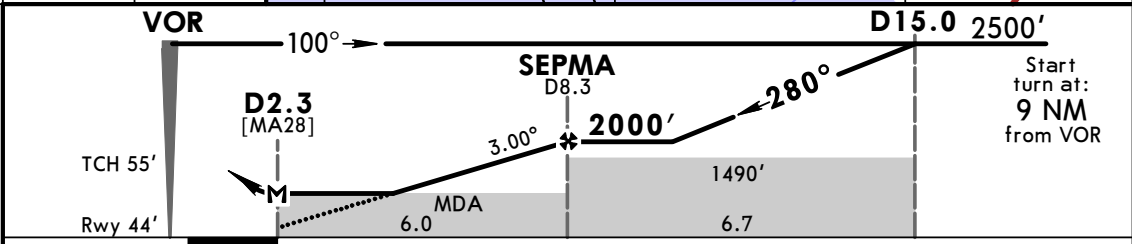
STRAIGHT-IN LANDING RWY 28		CIRCLE-TO-LAND	
MDA(H) 430' (386')		Not authorized South of rwy	
	ALS out	Max Kts	MDA(H)
A		100	480' (436')
B	1100m	135	540' (496')
C	1600m	180	640' (596')
D	1600m	205	740' (696')

PANS OPS

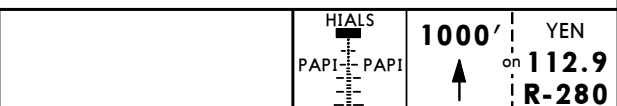
ATIS 127.450		YANBO Tower 118.1		Ground 121.9	
VOR YEN <b>112.9</b>	Final Apch Crs <b>280°</b>	Procedure Alt <b>SEPMA</b> 2000' (1956')	MDA(H) <b>430'</b> (386')	Apt Elev 44' Rwy 44'	
<b>MISSED APCH:</b> Climb on R-280 to 1000', then turn LEFT direct to VOR climbing to 3000' and hold. Do not turn before MAP. MAX 230 KT.					
Alt Set: hPa		Rwy Elev: 2 hPa	Trans level: FL 150		Trans alt: 13000'



RECOMMENDED ALTITUDES	
YEN DME	ALTITUDE
8.0	1905'
7.0	1589'
6.0	1273'
5.0	957'
4.0	641'



Gnd speed-Kts	120	140	160	180
Descent Angle 3.00°	637	743	849	955
MAP at D2.3				



PANS OPS	STRAIGHT-IN LANDING RWY 28		Max Kts	CIRCLE-TO-LAND	
	ALS out	MDA(H) 430' (386')		MDA(H)	Not authorized South of rwy
C	1100m		180	640' (596')	2400m
D	1600m	1600m	205	740' (696')	3600m