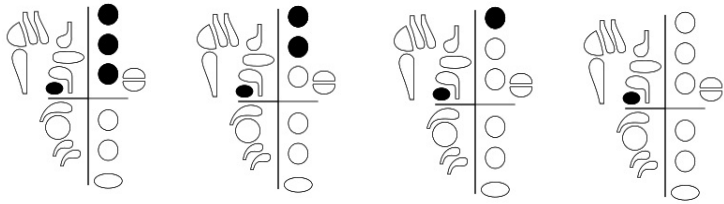
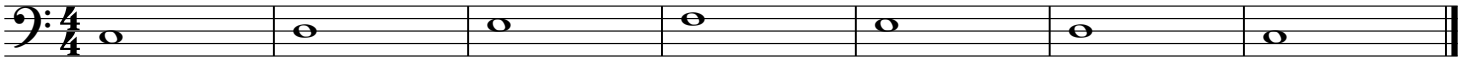


IV. Beginning Exercises



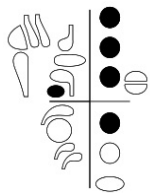
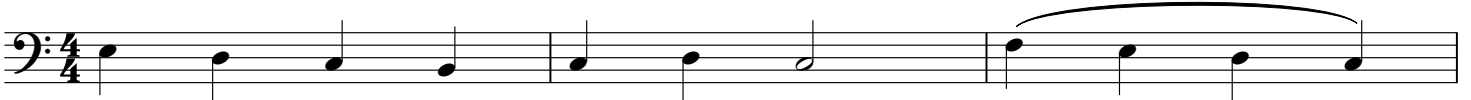
Hot Crossed Buns

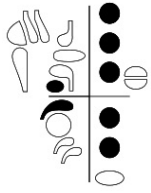
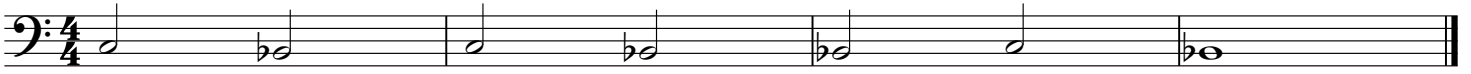


Mary Had a Little

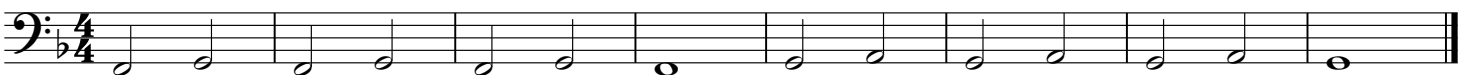
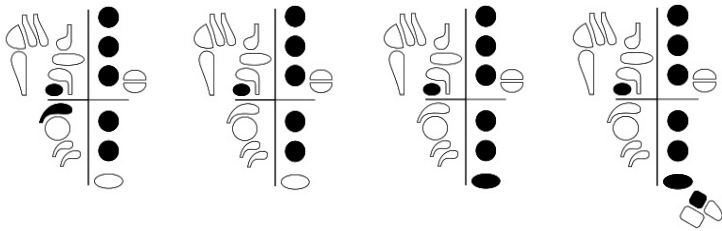


Be Natural





Beware of the key signature!



Two staves of musical notation in bass clef, 4/4 time. The first staff contains two measures of eighth notes, each with a slur. The second staff contains two measures of eighth notes, with a slur over the second measure and a whole note in the third measure.

F Major Scale

A single staff of musical notation in bass clef, 4/4 time, showing a continuous line of eighth notes with slurs over the first and second measures.

A single staff of musical notation in bass clef, 4/4 time, showing a sequence of eighth notes followed by pairs of quarter notes.

A single staff of musical notation in bass clef, 4/4 time, showing pairs of quarter notes.

Chord Study (Rubank)

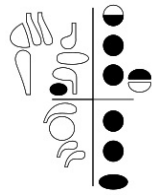
A single staff of musical notation in bass clef, 4/4 time, showing a sequence of chords: two eighth notes, a quarter note, a half note, a quarter note, a half note, a quarter note, a half note, and a quarter note.

Scale Study (Rubank)

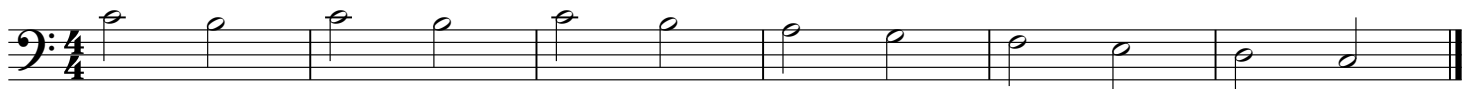
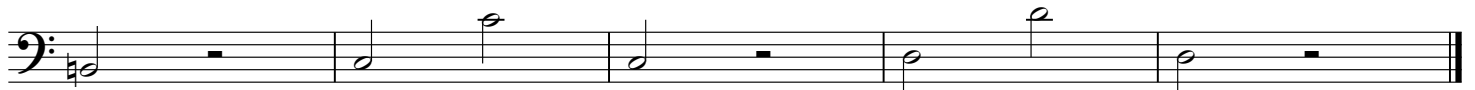
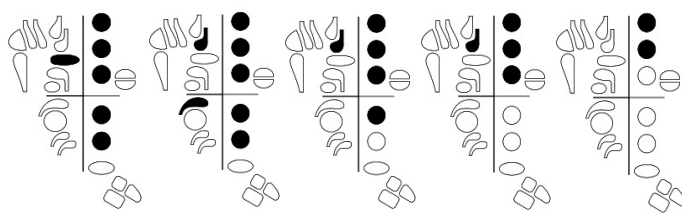
A single staff of musical notation in bass clef, 4/4 time, showing a sequence of eighth notes with slurs over the first and second measures.

A single staff of musical notation in bass clef, 4/4 time, showing a sequence of eighth notes.

A single staff of musical notation in bass clef, 4/4 time, showing a sequence of eighth notes.



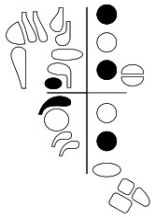
Come All Ye Faithful (Willis)



Theme from "Finlandia" (Jean Sibelius)

Using Eb

Beware of the key signature!



Bb Major

Country Gardens (Old English Tune)