

We are proud to be the first certified Hahnemühle FineArt and Canson Infinity digital printer in the Atlanta Metro area, a distinction bestowed only on print studios who have demonstrated an extremely high level of expertise in digital printing. We hope to meet every one of your needs and that you will be continually thrilled with the quality of our work!

PRICE LIST

REVISED 09/2020

TABLE OF CONTENTS

Introduction to Giclée Printmaking	Page 2	Art Show / Exhibition Framing Selections	Pages 11-13
Digital Scanning / Image Capture (for original art)	Page 2	Basic Canvas Float Frames	Page 14
CANVAS PRINTS - Specs & Pricing	Page 3	Window Mats - Mounting - Clear Bags	Page 15
BELGIAN LINEN PRINTS NEW Specs & Pricing	Page 4	Packaged Matted Print Bundles	Page 15
Stretcher Bars - Border Options - Texturizing	Page 5	Acrylic - Aluminum - Wood Substrates	Page 16
Fine Art Papers - Specs / Descriptions	Page 6	Certificates of Authenticity	Page 17
Fine Art Papers - Pricing	Page 7	Greeting Cards - Postcards	Page 17
Photo - Display - Specialty Substrates	Page 8	Business Cards - Flyers - Brochures - Posters	Page 17
Mini Print Bundles	Page 8	Shipping Rates - (Ground USA 48)	Page 18
Digital File Submission Guidelines	Page 9	Table Tops - Labels - Stickers - Banners	
Basic Scans - Photo Restoration - Editing	Page 9	Signage, Mugs, Etc. - CALL FOR QUOTE	
Art Show / Exhibition Framing Packages	Page 10		

The Hahnemühle Certified Studio program was created to support professional print providers to achieve and maintain excellence in art reproduction, digital art and photographs. A Certified Studio has been accredited by Hahnemühle technicians after a training session and assessment has been completed. Among many criteria, the studio must have an advanced education level regarding archivability/ longevity of their prints, with full competence in fine art inkjet printing workflow. They must fully implement the Color Management workflow.

Instructional orientation is conducted during an on-site visit by one of our technicians. The objective is to increase efficient printing workflow, accurate color management, and correct print handling practices that will assure consistent high-quality output.

The CANSON® Infinity Certified Print Lab Program:

This international certification program qualifies Digital Fine Art and Photo Print Labs at the highest level. The qualification and audit process taking into consideration the complete workflow including the equipment, processes and handling of the CANSON® Infinity Fine Art and Photo media range.

The Certified Print Lab program identifies and promotes PRINTER establishments deemed as *Centers of Excellence for Fine Art and Photo printing* by CANSON®





PRICE LIST

Subject to change w/o notice -
Online store prices may vary

What is a Giclée?

(pronounced zhee-clay) n. AKA: Archival Pigment Print. Most often associated with reproductions, a giclée is a print or multiple copy of an original work of art that was created by conventional means (painting, drawing, etc.) and then reproduced digitally via inkjet printing methods.

In the case of computer-generated, digital artwork, each print can be considered an original since it is not a copy or reproduction of anything. What distinguishes a giclée from other inkjet prints is that it is printed by state-of-the-art equipment, using pigmented inks onto museum-quality, 100% cotton rag archival fine art paper or canvas.

Getting Started

The most critical step in producing a giclée is creating a high resolution, digitized copy of the original artwork. Our studio scanner scans up to 8200 dpi for flat items up to 12x18. For larger originals, image capture is handled by our large format BetterLight scanning camera (200+ megapixel resolution- current iPhones have a 12 megapixel camera). Mated with specialized optics and a HID lighting system to minimize glare and reflection, we capture every nuance of detail from even the largest of originals. This one digital file may be used to create different products as well as a variety of print sizes and substrates. Canvas, watercolor papers, note cards, posters, postcards, business cards, etc

If you have your own files that you consider sufficient for your needs, we suggest ordering proof prints to evaluate how your colors will look when printed on a specific media; An 8-1/2"x11" of the full image on any media paper or canvas we stock. A "detail" proof can also be requested to evaluate image quality at the desired final size

SCAN (Digital Capture) & FILE PREPARATION

From your original paintings, drawings, pastels, watercolors, collage or mixed media originals.

ONE-TIME CHARGE -Includes:

- A high resolution digital scan of your artwork,
- A color corrected printed 8.5x11 proof (watermarked) on your choice of media. (add'l proof prints **on alternate media** are \$5.00 ea).
- Your images are archived for future orders and safety.
- A back-up disk of your high resolution files for safekeeping (and also includes small jpeg files suitable for web, email, screen, and competition submissions).

2-D ARTWORK (UP TO 12 X 18)	\$ 45
2-D or 3-D ART (UP TO 40 X 60)	\$ 95
OVER 40 X 60	\$ 175

Framed art can be unassembled and professionally refit for a small additional fee.

NORMAL TURNAROUND: SCAN TO "READY TO PRINT" FILE IS ABOUT 7 - 10 DAYS.

You may reduce time by advance scheduling and reserve soonest possible availability.

RUSH SERVICE AVAILABLE FOR AN ADD'L CHARGE. Multi-piece orders may require additional time.

SPECIAL SAVINGS OFFERS:

Once your files are ready to print, you don't necessarily need to have an inventory of prints until you've made a sale. However, it is strongly recommended to have some actual examples to show potential customers. This can be helpful by providing a full-size visual reference in selecting a size and/or media choice. Also, many artists come to us already having multiple clients all ready to buy a giclée of a particular work.

A. SAVE 15% on prints when pre- ordered with any new scan order.

B. BUY 4 SCANS - Get 1 FREE: (\$180 - you save \$45) Purchase in advance and use individually as needed. Scan any 5 originals (8x10 to 12x18), includes color-corrected files, proof prints, etc. (no expiration, lock in savings for future orders).

C. BUY 4 SCANS - Get 1 FREE: (\$380 - you save \$95) Purchase in advance and use individually as needed. Scan any 5 originals (12x18 - 40x60), includes color-corrected files, proof prints, etc. (no expiration, lock in savings for future orders).

Limit of Liability and Copyright Protection

Submission of any materials such as original artwork, transparencies, or digital images to Digital Arts Studio constitutes an agreement by the client that they are either the creator or owner of all reproduction rights. In the event of copyright dispute or litigation, Digital Arts Studio is held harmless and client accepts all responsibility for damages, legal costs and any restitution. Digital Arts Studio certifies that no additional copies other than those requested by client will be created, sold or distributed in any way without the clients permission pursuant to copyright laws. Digital Arts Studio will take all precautions to archive client files but cannot guarantee the loss of or permanence of any data storage format.

CHROMATA LYVE CANVAS



The Lyve™ Canvas is a 450 gsm, 20.5 mil bright white, consistent poly-cotton blend matte canvas using an acid-free, neutral pH coating. Archival Certified, OBA-free.

The Industry Leader in Fine Art Digital Canvas and Made in the U.S.A.

With eye-popping color gamut and Dmax, Lyve sets a new standard of exceptionalism in fine art and photographic printmaking. Unlike 99% of available inkjet canvas products for giclee printing, this canvas utilizes "Chromata White" optical brightener additive-free and fluorescent whitening agent-free breakthrough technology. "Chromata White" provides the most stable platform on which to print photographs and fine art works without the color shift issues inherent on other canvases. Optical Brighteners compromise the attainment of true color and they inevitably deteriorate and yellow over time.

We print ANY size up to 60" wide by any length. For sizes not listed, use our online calculator

TIMELESS™ VARNISH is specifically formulated to enhance and protect Lyve canvas and is offered in matte, satin or gloss finishes. TimeLess™ varnish adds additional UV and scuffing protection and is **INCLUDED** in our price.

**** ADDING 3-D Brush Strokes** on top of your printed image makes each reproduction unique, and will look and feel more like an authentic original painting. We carefully hand apply multiple layers of clear acrylic "paint" adding texture to your canvas prints. Your "hand-embellished" prints look as authentic as it gets!

STANDARD SIZES LISTED - ANY SIZE MAY BE ORDERED UP TO 60" X 120"						
(ACTUAL PRICE IS CALCULATED BY SQUARE FOOTAGE).						
IMAGE SIZE	UNSTRETCHED W/ 2" BORDER	UNSTRETCHED W/ 3" BORDER	STANDARD STRETCH 3/4"	GALLERY WRAPPED 1.5"	GALLERY WRAPPED 2"	**add for hand-applied brush stroke texturizing
8 X 10	18.32	24.42	34.52	36.32	48.90	5.56
11 X 14	29.44	37.07	51.94	54.44	71.07	10.69
12 X 16	34.89	43.18	60.09	62.89	81.26	13.33
16 X 20	52.33	62.36	84.73	88.33	111.32	22.22
20 X 24	73.27	85.04	112.87	117.27	144.88	33.33
20 X 30	88.97	102.05	133.97	138.97	170.05	41.67
24 X 30	103.79	117.75	152.39	157.79	191.19	50.00
24 X 36	122.11	137.38	176.11	182.11	218.98	60.00
30 X 40	172.70	190.58	237.50	244.70	288.50	88.89
36 X 48	226.78	247.28	302.38	310.78	361.52	120.00
40 X 60	259.05	280.86	340.05	349.05	403.26	138.89
44 X 72	307.02	331.01	397.02	407.02	467.01	166.67
48 X 96	362.84	388.58	460.04	470.84	535.46	200.00
54 X 120	480.59	510.25	593.99	606.59	681.61	270.00

GALLERY WRAPPED CANVAS: requires 2" - 3" of additional canvas border to allow for stretching and is included in the prices above. Sides may be a solid color, or "mirrored edge. All are stapled on the back of stretcher so that no unsightly staples are visible. Our stretcher frames are individually cut from 8-10 foot kiln-dried solid wood (not "tongue and groove" pieces) and precisely sized to a fraction of an inch as required.

SEE STRETCHER FRAME OPTIONS ON FOLLOWING PAGES

Imagine your artwork printed on the same materials used by the Old Masters of the 17th and 18th centuries!



Belgian Linen is a unique European textile which is grown, harvested, and woven entirely in Belgium by members of the Masters of Linen & European Flax Charter Associations. It has been prized for thousands of years for the high quality, softness, and durability it offers. It naturally has a rich color absorption and is lint-free and hypoallergenic. This is why Belgian Linen is widely known as the world's finest linen available!

Belgian Linen

- **Archival Certified:** 100+ years certified archival by the Fine Art Trade Guild.
- **Best Textile for Printing:** Linen has naturally superior ink absorption.
- **HD Image Quality:** The most advanced inkjet coating technology. Your prints will look their sharpest and have deep, rich colors and blacks.
- **Strong and Durable:** Linen is 30% stronger than cotton, making the perfect textile for printing gallery wraps or rolled prints.
- **Sustainably-Sourced:** The flax seed used to make Belgian Linen are grown with no irrigation and no or few pesticides. Each roll is traceable back to its origins.
- **Revered by the Old Masters:** Belgian Linen has been used for centuries by famous artists such as Dali, Whistler, Monet, and more!
- **18 mil Thickness 425 gsm Weight:** This luxury linen textile is thick and heavy weight.

IMAGE SIZE	UNSTRETCHED w/ 2" border	UNSTRETCHED w/ 3" border	Standard Stretch 5/8" for framing	GALLERY WRAP 1-1/4" Thickness	GALLERY WRAP 2" Thickness	ADD for hand-applied brush stroke texturizing
8 X 10	\$22.89	\$30.52	\$39.09	\$40.89	\$55.00	\$5.56
11 X 14	\$36.79	\$46.33	\$59.29	\$61.79	\$80.33	\$10.69
12 X 16	\$43.60	\$53.96	\$68.80	\$71.60	\$92.04	\$13.33
16 X 20	\$65.40	\$77.94	\$97.80	\$101.40	\$126.90	\$22.22
20 X 24	\$91.56	\$106.28	\$131.16	\$135.56	\$166.12	\$33.33
20 X 30	\$111.18	\$127.53	\$156.18	\$161.18	\$195.53	\$41.67
24 X 30	\$129.71	\$147.15	\$178.31	\$183.71	\$220.59	\$50.00
24 X 36	\$152.60	\$171.68	\$206.60	\$212.60	\$253.28	\$60.00
30 X 40	\$203.83	\$225.63	\$266.83	\$273.83	\$320.83	\$88.89
36 X 48	\$283.40	\$309.02	\$359.00	\$367.40	\$423.26	\$120.00
40 X 60	\$383.68	N/A	\$473.68	\$483.68	N/A	\$166.67
Discounts for 5 or more of same image – Please call for quote						

All Stretched CANVAS: requires 2" - 3" of additional canvas border to allow for stretching and is included in the prices above. Sides may be a solid color, or "mirrored edge. All are stapled on the back of stretcher so that no unsightly staples are visible. Our stretcher frames are individually cut from 8-10 foot kiln-dried solid wood (not "tongue and groove" pieces) and precisely sized to a fraction of an inch as required.

We print ANY size Belgian Linen up to 40" wide by any length.

TIMELESS™ VARNISH is specifically formulated to enhance and protect your canvas and is available in matte, satin or gloss finishes. TimeLess™ varnish adds additional UV and scuffing protection and is INCLUDED in our price.

**** ADDING 3-D Brush Strokes** on top of your printed image makes each reproduction unique, and will look and feel more like an authentic original painting. We carefully hand apply multiple layers of clear acrylic "paint" adding texture to your canvas prints. Your "hand-embellished" prints look as authentic as it gets!



2" Thickness -
DEEP GALLERY-WRAP
Solid-mirrored -overflowed

1-1/4" Thickness -
Standard GALLERY-WRAP
Mirrored edge around sides

1-1/4" Thickness -
Standard GALLERY-WRAP
Image overflow around sides

1-1/4" Thickness -
Standard GALLERY-WRAP
Solid Color Sides

3/4" Thickness - standard
depth for traditional framing

STRETCHER BAR & BORDER OPTIONS

Note: Our 2" deep stretcher may be used on any size but recommended for sizes over 36"x48"

All are wired & ready to hang

**** ADDING 3-D Brush Strokes on top of your printed image makes each reproduction unique, and will look and feel more like an authentic original painting. We carefully hand apply multiple layers of clear acrylic "paint" adding texture to your canvas prints. Your "hand-embellished" prints look as authentic as it gets!**



We carry the best selection of brand name, fine art, museum-quality papers! Quality and consistency you can trust!



Hahnemühle Fine Art Papers Since 1584, Hahnemühle's paperr makers have been proving that they superbly master the old craft: uniquely beautiful papers are created from pure spring water and first-class pulps, the same today as over 400 years ago.

Photo Rag Ultrasmooth 305 gsm is the most popular and widely used digital paper produced today. A smooth bright paper with 100% rag content making it highly archival. Specifically designed to meet the need of photographers or artists using digital photographic output.

William Turner 310 gsm is a genuine mould-made paper in both look and feel and is highly archival. Specifically designed to meet the need of artists using fine art giclée output.

Photo Rag Pearl 320 gsm has a smooth homogen surface structure with the unique pearl-coating. This natural white paper - consisting of 100 % cotton - is free of OBA's and reminds of a natural white baryta-paper. The paper features a high Dmax and a large color gamut that enables the reproduction of finest color and black-and-white nuances in three-dimensional prints.

Photo Rag Satin 310 gsm is a smooth 100% rag, acid free paper with a very unique coating that produces a satin look wherever there is a printed image while leaving a matte surface in non printed areas. Photo Rag Satin is ideal for photographers and fine art reproduction where a slight surface variation and depth is desired. A smooth 100% rag, acid free paper with a very unique coating that produces a satin look wherever there is a printed image while leaving a matte surface in non printed areas. Photo Rag Satin is ideal for photographers and fine art reproduction where a slight surface variation and depth is desired.

Photo Rag® Metallic - 340 gsm 100% cotton and has no optical brighteners, free of acid and lignin and meets the highest requirements for aging resistance. Fine Art paper made of 100% cotton with a metallic effect. The premium evenly shimmering metallic effect inkjet coating ensures bright colors, deep blacks and perfect color and detail reproduction. The sophisticated silver metallic effect underscores the image and makes motifs with metallic elements, reflections, ice and glass, architecture and landscape shots, as well as black and white photographs with high-contrast tones, shine. Depending on the incidence of light, the metallic effect glimmers stronger and gives the printed motifs a unique liveliness.

Canson Fine Art Papers

BFK Rives Fine Art Printmaking 310 gsm. The world's number one mould-made traditional printmaking paper, with more than 500 years of history and heritage is now available for the Digital Fine Art market. BFK Rives has a unique pure white tone obtained without the use of OBAs and a very specific smooth and velvety texture. This exceptional paper is ideal for fine art prints and photographs and gives them a very prestigious aura.

Arches® Aquarelle 240 gsm gives a unique and unrivaled character to the fine art reproduction of traditional artwork and photographs. This genuine 100% rag, watercolor paper possesses the unique structure, surface texture and warm white tone that demanding artists expect from a traditional Fine Art paper. This paper complies with the highest archival standards and is extremely age resistant.

Somerset

Enhanced Velvet Watercolor 255 gsm. Mouldmade of 100% cotton fibers, this natural white paper yields exceptional depth of color with a velvety fine art texture. The surface of the paper becomes an inherent part of the finished print, without overwhelming the image, but adding a fine art element to the composition. It is made by the St. Cuthberts mill in England of 100% cotton using a traditional mould machine and buffered with calcium carbonate to help protect prints against attack by atmospheric pollutants. Somerset Enhanced was one of the first inkjet fine art papers to address the needs of photographers and artists and continues to be a staple for fine art reproduction and photography. Perfect for limited editions demanding a consistent art feel.

Museo

Silver Rag Archival Lustre Photo Paper 300 gsm is an award-winning fine art paper and designed with fiber based photo paper and fine art photographers in mind. It has the semi-gloss look of a traditional air dried fiber print with the feel of a fine cotton paper and image quality rivaling market leading photo quality inkjet papers. Manufactured to archival standards and without optical brighteners, Museo Silver Rag gives exceptional print performance for both B&W and color photographs. The high-quality 100% cotton rag fiber and careful manufacturing result in a lush, exceptional feel. Also useful for fine art images that need a deeper black value than one can get from matte fine art papers. "With the look and feel of traditional fiber based (Baryta) photo paper, Museo Silver Rag delivers high Dmax and superior tonal range." Museo® Silver Rag, fine art and gallery prints from celebrated image makers show extraordinary depth and detail along with the semi-gloss finish of traditional fiber-based photographic paper. All Museo products are made in the USA.

Moenkopi [moe-in-koe-pee]

Unryu Washi Fiber Paper 55 gsm Translated literally as 'cloud dragon paper', Unryu is an environmentally-friendly Japanese paper made primarily from long, course Kozo (mulberry) fibers using traditional Japanese Washi techniques. An excellent paper choice for "organic" artwork and special effects, especially when the edges are hand-torn and "float" mounted. Moenkopi papers have been treated to produce a sharp image structure while maintaining the exquisite feel expected from a Japanese Washi paper. No other paper has received as many awards and acclaim.

FINE ART GICLÉE PRINTS ON PAPER

PAPER SIZE (incl. borders)	STANDARD SIZES SHOWN									
	COLD PRESS WATERCOLOR - ALL 100% COTTON RAG				SMOOTH MATTE	SMOOTH PEARL	SMOOTH SATIN	METALLIC SILVER	SEMI- GLOSS	"RICE" PAPER
	Arches Aquarelle	Canson BKF Rives Printmaking Rag	Hahnemühle William Turner	Somerset Enhanced Velvet	Hahnemühle Photo Rag Ultrasmooth	Hahnemühle Photo Rag PEARL	Hahnemühle Photo Rag SATIN	Hahnemühle Photo Rag METALLIC	Museo Silver Rag	Moenkopi Unryu Washi Fiber
GSM	240 gsm	310 gsm	308 gsm	255 gsm	305 gsm	320 gsm	310 gsm	340 gsm	300 gsm	55 gsm
8 x 10	\$8.96	\$9.66	\$9.24	\$8.54	\$8.96	\$9.24	\$9.24	\$9.80	\$8.54	\$6.86
9 x 12	\$12.00	\$12.94	\$12.38	\$11.44	\$12.00	\$12.38	\$12.38	\$13.13	\$11.44	\$9.19
11 x 14	\$17.12	\$18.46	\$17.66	\$16.32	\$17.12	\$17.66	\$17.66	\$18.73	\$16.32	\$13.11
12 x 16	\$21.28	\$22.94	\$21.95	\$20.28	\$21.28	\$21.95	\$21.95	\$23.28	\$20.28	\$16.29
16 x 20	\$35.52	\$38.30	\$36.63	\$33.86	\$35.52	\$36.63	\$36.63	\$38.85	\$33.86	\$27.20
20 x 24	\$53.28	\$57.44	\$54.95	\$50.78	\$53.28	\$54.95	\$54.95	\$58.28	\$50.78	\$40.79
20 x 30	\$66.72	\$71.93	\$68.81	\$63.59	\$66.72	\$68.81	\$68.81	\$72.98	\$63.59	\$51.08
24 x 30	\$80.00	\$86.25	\$82.50	\$76.25	\$80.00	\$82.50	\$82.50	\$87.50	\$76.25	\$61.25
24 x 36	\$96.00	\$103.50	\$99.00	\$91.50	\$96.00	\$99.00	\$99.00	\$105.00	\$91.50	\$73.50
30 x 40	\$133.28	\$143.69	\$137.45	\$127.03	\$133.28	\$137.45	\$137.45	\$145.78	\$127.03	\$102.04
36 x 48	\$192.00	\$207.00	\$198.00	\$183.00	\$192.00	\$198.00	\$198.00	\$210.00	\$183.00	\$147.00
40 x 60	\$266.72	\$287.56	\$275.06	\$254.22	\$266.72	\$275.06	\$275.06	\$291.73	\$254.22	\$204.21
44 x 72	\$352.00	\$379.50	\$363.00	\$335.50	\$352.00	\$363.00	\$363.00	\$385.00	\$335.50	\$269.50
48 x 96	N/A			\$488.00	\$512.00	N/A		\$560.00	\$488.00	N/A
60 x 120				\$762.50	\$800.00			N/A	\$762.50	

Hand-Torn "Deckled" Edges are available on most papers for a small additional charge.

10% DISCOUNT FOR 5 of SAME IMAGE / SIZE / PAPER- Volume pricing available- Please call for quote.

PRINT TIPS

We recommend including white borders around your images; at the very least, 1/2" on all sides will allow room for proper attachment to matting or general handling. We strongly suggest to increase the white space around an image to a larger, standard frame size. Wider borders (1-1/2 - 3") will "present" your images better, allow for signing and/or numbering prints, and make it easier and less expensive for your customer to frame. Odd sized images should be centered on a standard size. To increase the life your giclées on paper, you should inform your customers about appropriate preservation matting and framing. It is advisable to always handle and display your artwork carefully. Proper materials and handling will prolong the life of a print by protecting it in a stable environment. An experienced framer will be able to recommend the correct preservation materials to minimize fading and environmental factors such as airborne contaminants, pollution, heat, light, and humidity.

We cannot guarantee 100% color accuracy on prints made from your submitted files.
If your work is extremely "color-critical", we suggest ordering a proof print, (8.5x11 on your choice of media).

Generic profiles for soft proofing are also downloadable from our online store (MAIN MENU). Proper use of ICC profiles in PhotoShop or LightRoom will provide a more accurate visual as to how your files will print. If you do not know how this process works or do not have monitor calibration hardware, a screen accuracy check file is also available for download. If match prints are provided, we will color correct in-house for \$33.75 per image and make every effort to come as close as possible. Due to variations in paper types, ink sets and equipment, some color variations may still occur.

Photographic - Poster - Fabric - Mural Substrates

CANSON BARYTA PRESTIGE 340 GSM PHOTO PAPER

is comprised of an acid-free alpha-cellulose and cotton white paper base with a true barium sulphate coating. It is a smooth Baryta Gloss paper which evokes the look and aesthetic feel of traditional darkroom papers. The paper characteristics are truly unique: providing excellent durability, outstanding black optical density (D-max), and superb image sharpness. The paper offers a good level of flatness, excellent surface homogeneity, very good cuttability, and its printed and non-printed surfaces differ only very slightly in glossiness. It offers an extraordinary wide gamut which improves color reproduction and increases visual impact.

EPSON SMOOTH LUSTER- 10MIL 280 GSM RC PHOTO PAPER

Epson Luster is a heavyweight photo paper, developed for the discerning photographer who demands maximum color gamut, Dmax, and image resolution. Using a cockle-free RC base that gives the product a true photographic feel, Epson Luster allows for maximum ink coverage and produces stunningly vivid images. It has an instant-dry surface which allows for easy handling during production and finishing.

MOAB SLICKROCK METALLIC SILVER 12 MIL 300 GSM PHOTO PAPER

The new Slickrock Metallic Silver 300 is an ultra shiny, true metallic inkjet paper with a unique instant dry coating for jaw –dropping image reproduction. Slickrock Metallic Silver 300 adds unprecedented depth to an image featuring exceptional reflective shine never seen before. This metal-like surface produces images that jump off the paper and can be handled immediately after printing. Slickrock Metallic Silver 300 is designed for fine art as well as everyday image reproduction, including general photography, portraiture, posters, and graphic art. Designed for photographers seeking to push their images to the limit with a metallic and dimensional look, Slickrock Metallic Silver 300 will shimmer in your galleries!

HEAVYWEIGHT HIGH DEFINITION MATTE 10MIL 230 GSM POSTER PAPER

A bright coated paper that has instant drying characteristics that allows immediate use without smearing or smudging. It has a thick and smooth surface it is designed to provide images with high color density, optimal color gradation and perfect image sharpness. Applications: Posters, POS signage, Graphic Art Reproduction, and Exhibition Graphics. (Not recommended for photographs)

PHOTOTEX MURAL WALLCOVERING

PhotoTex is an adhesive-backed, polyester -based fabric that sticks to any non-porous flat surface. PhotoTex produces sharp-looking, seamless graphics and superior photographic images every time and ideal for life-size photographic cut-outs for walls and wall murals. It also works great for a variety of indoor and outdoor applications, including windows, backlits, doors, sign boards, and other flat surfaces. The adhesive is removable, reusable, and repositionable.

PHOTOGRAPHIC PAPERS - DISPLAY MATERIAL - SPECIALTY MEDIA

ANY SIZE MAY BE ORDERED - STANDARD SIZES SHOWN
ACTUAL PRICE IS CALCULATED BY SQUARE FOOTAGE.

PAPER SIZE (incl. borders)	PREMIUM PHOTOGRAPHIC PRINTS			DISPLAY & SPECIALTY PRINTS		
	EPSON Smooth Lustre Photo	MOAB SlickRock Silver	CANSON Baryta Prestige	Cotton Sateen Sheer Fabric	High Definition Heavyweight Matte	PhotoTex Mural Wallpaper
8 x 10	\$4.76	\$6.72	\$7.01	\$8.40	\$4.20	\$6.16
9 x 12	\$6.38	\$9.00	\$9.39	\$11.25	\$5.63	\$8.25
11 x 14	\$9.10	\$12.84	\$13.40	\$16.05	\$8.03	\$11.77
12 x 16	\$11.31	\$15.96	\$16.65	\$19.95	\$9.98	\$14.63
16 x 20	\$18.87	\$26.64	\$27.79	\$33.30	\$16.65	\$24.42
20 x 24	\$28.31	\$39.96	\$41.69	\$49.95	\$24.98	\$36.63
20 x 30	\$35.45	\$50.04	\$52.21	\$62.55	\$31.28	\$45.87
24 x 30	\$42.50	\$60.00	\$62.60	\$75.00	\$37.50	\$55.00
24 x 36	\$51.00	\$72.00	\$75.12	\$90.00	\$45.00	\$66.00
30 x 40	\$70.81	\$99.96	\$104.29	\$124.95	\$62.48	\$91.63
36 x 48	\$102.00	\$144.00	\$150.24	\$180.00	\$90.00	\$132.00
40 x 60	\$141.70	\$200.04	\$208.71	\$250.05	\$125.03	\$183.37
44 x 72	\$187.00	\$264.00	\$275.44	\$330.00	\$165.00	
48 x 96	\$272.00				\$240.00	
60 x 120	\$425.00				\$375.00	

DISCOUNT FOR 5+ OF SAME PRINT - CALL FOR VOLUME PRICING

MINI PRINT BUNDLES

12 copies of any one image.
Your image will be sized to include a minimum 1/4" white borders.

Heavyweight Watercolor Paper	4x6	\$28/dz.
	5x7	\$36/dz.
Smooth Luster Photographic Paper	4x6	\$22/dz.
	5x7	\$26/dz.

WE CANNOT GUARANTEE COLOR ACCURACY FROM YOUR SUBMITTED FILES.

Generic profiles for soft proofing are also downloadable from our online store (MAIN MENU). Proper use of ICC profiles in PhotoShop or LightRoom will provide a more accurate visual as to how your files will print. If you do not know how this process works or do not have monitor calibration hardware, a screen accuracy check file is also available for download. If match prints are provided, we will color correct in-house for \$33.75 per image and make every effort to come as close as possible. Due to variations in paper types, ink sets and equipment, some color variations may still occur.

File Submission Specs - Basic Scans - Image Editing - Shipping

FILE PREPARATION & SPECIFICATIONS FOR PRINT ORDERS

ORDER ONLINE from your phone, tablet or computer at www.DigitalArtsStudio.COM or use the PLACE ORDER button on our main web site. You can upload your files (100MB max.) select options and even preview your art framed and hanging on a wall!

Larger files may be uploaded via DropBox. Bring files to our studio on a flash or portable drive, CD or DVD

Formats	JPEG - TIF - PSD - PDF (no vector files, Word documents, or Powerpoint)
IMPORTANT!	Adobe RGB 1998. 8 or 16 bit. CMYK or sRGB files will be converted and may alter color.
Resolution (DPI): Image Quality	Please FLATTEN layers; do not include PhotoShop alpha channels, adjustment layers or use LZW compression. Simply enlarging an image file with PhotoShop, etc. will often result in "pixellation and does nothing to enhance print quality. Resolution of 300 dpi at print size preferred; images over 24x30 may be reduced to 180 - 240 dpi w/o loss of quality. If files are not of sufficient quality, we can "often up-rez" some files to increase image size for an add'l charge. Ordering a detail proof at 100% is recommended. If you are unsure about the format, quality or size of your file, send us what you have and we will review and advise.
PROOF PRINTS AND COLOR CORRECTION	<p>We cannot guarantee 100% color accuracy on prints made from your submitted files. If your work is extremely "color-critical", we suggest ordering a proof print, (8.5x11 on your choice of media).</p> <p>Generic profiles for soft proofing are also downloadable from our online store. Proper use of ICC profiles in PhotoShop or LightRoom will provide a more accurate visual as to how your files will print. If you do not know how this process works or do not have monitor calibration hardware, a screen accuracy check file is also available for download.</p> <p>If match prints are provided, we will color correct in-house for \$ 33.75 per image and make every effort to come as close as possible. Due to variations in paper types, ink sets and equipment, some color variations may still occur</p>

HIGH RESOLUTION BASIC SCANS

*Transparencies, negatives or prints under 12x18.
Includes minor clean up and basic adjustments*

APPROX. FILE SIZE	PRICE EA.
up to 25 MB (printable 8x10 @ 300 dpi)	\$7.50
up to 50 MB (printable 12x16 @ 300 dpi)	\$15.00
up to 100MB (printable 17x22 @ 300 dpi)	\$24.00
up to 200 MB (printable 24x36 @ 300 dpi)	\$35.00
CD-R \$7.50 ea. DVD-R \$15.00 ea.	

PHOTO & IMAGE EDITING SERVICES

We are happy to work one-on-one with clients on improving or modifying their images. Call to schedule an appointment.

Image re-size, crop, collage, color enhancement, creative borders
Photo Restoration: repair cracks, tears, restore faded colors.
Painterly applied effects - "watercolor or oil painting"
Graphic Design - page layout for flyers, cards, etc.
PhotoShop & PS Elements individual tutoring by the hour (MAC)
ALL IMAGING SERVICES @ \$95/HR. (1/4 hr blocks)

Specially Priced

ART SHOW / EXHIBIT FRAME PACKAGES

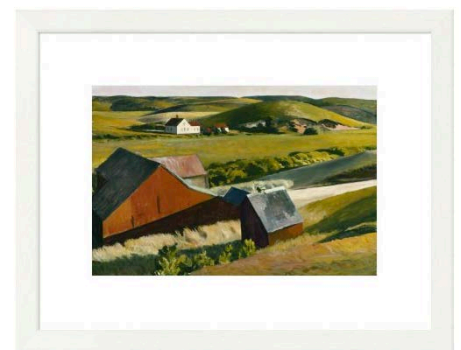
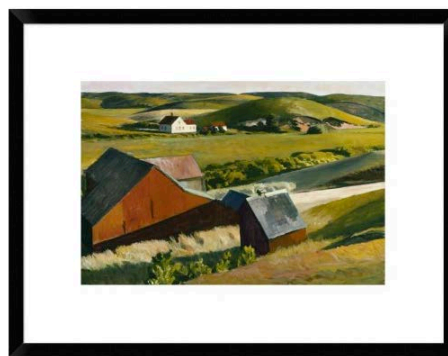
A simple and convenient way to do "one-stop shopping" if you have an upcoming exhibit or show or wish to sell "ready-to-hang" prints. We ship framed art with glass or acrylic anywhere in the US 48. Securely and safely packaged to arrive in excellent condition. Ideal cost-saving options for most basic show requirements or re-sale. Price includes: conservation grade 4 ply mat and foam core backing, regular glass, and all labor. **READY TO HANG** We can also build to fit so odd sizes may be ordered if required.

Discounted Prices for a Minimum Order of 3: Any Mix of sizes, styles, or finish

FINISHED FRAME SIZE	Maximum suggested image size	PKG A Frame STYLES	PKG B Frame STYLES	PKG C Frame STYLES	upgrade to 8 ply Double thick mat board	upgrade to UV Premium GLASS	upgrade to PLEXI	ADD DRYMNT
16 x 20	12 x 16	\$59.50	\$68.50	\$79.50	\$10.25	\$9.80	\$14.25	\$11.50
20 x 24	14 x 18	\$82.50	\$93.50	\$106.00	\$12.00	\$12.25	\$17.75	\$14.00
24 x 30	18 x 24	\$105.00	\$119.00	\$132.50	\$14.75	\$15.25	\$23.00	\$17.25
24 x 36	18 x 30	\$131.50	\$144.50	\$159.75	\$16.25	\$16.50	\$24.75	\$19.25
32 x 40	26 x 34	\$147.50	\$165.00	\$179.50	\$19.00	\$22.50	\$31.50	\$22.50
36 x 48	30 x 42	\$247.50	\$269.00	\$287.50	\$67.95	\$42.00	\$49.00	\$32.00

ABOVE PRICES REQUIRE A 3 PC. MINIMUM PURCHASE. MIX AND MATCH ANY 3 SIZES & STYLES.

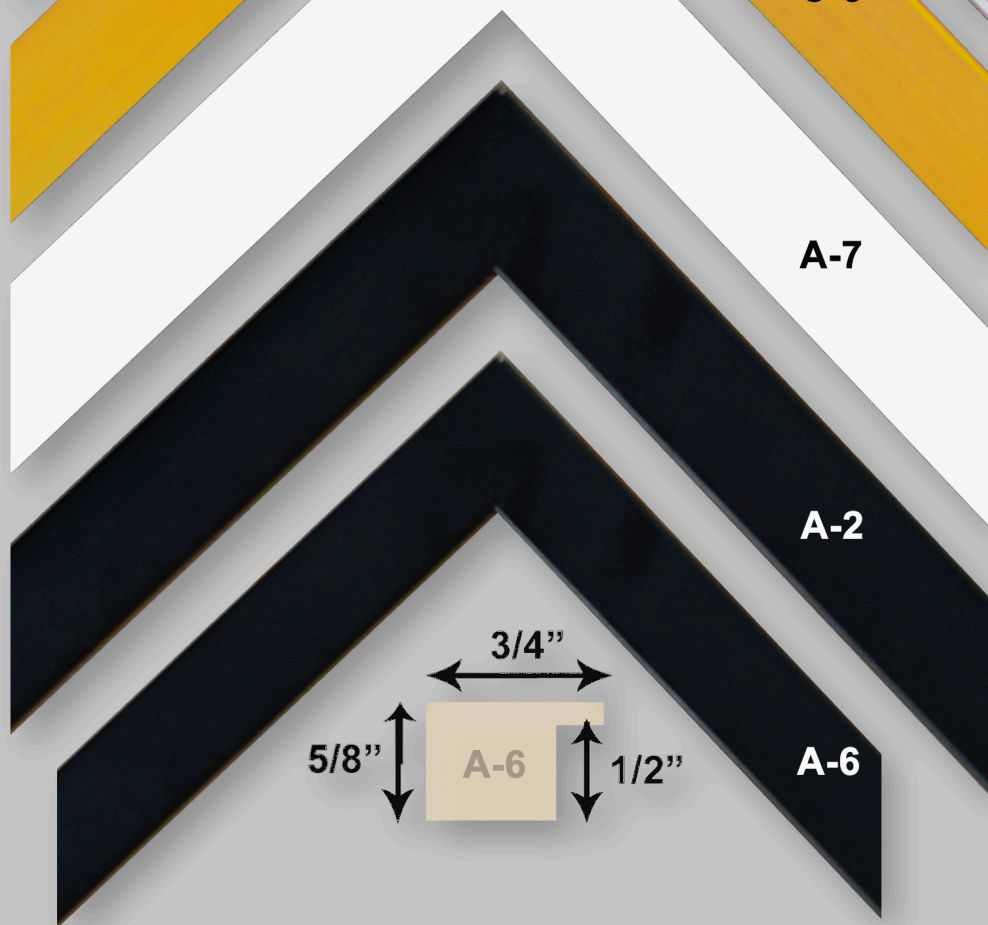
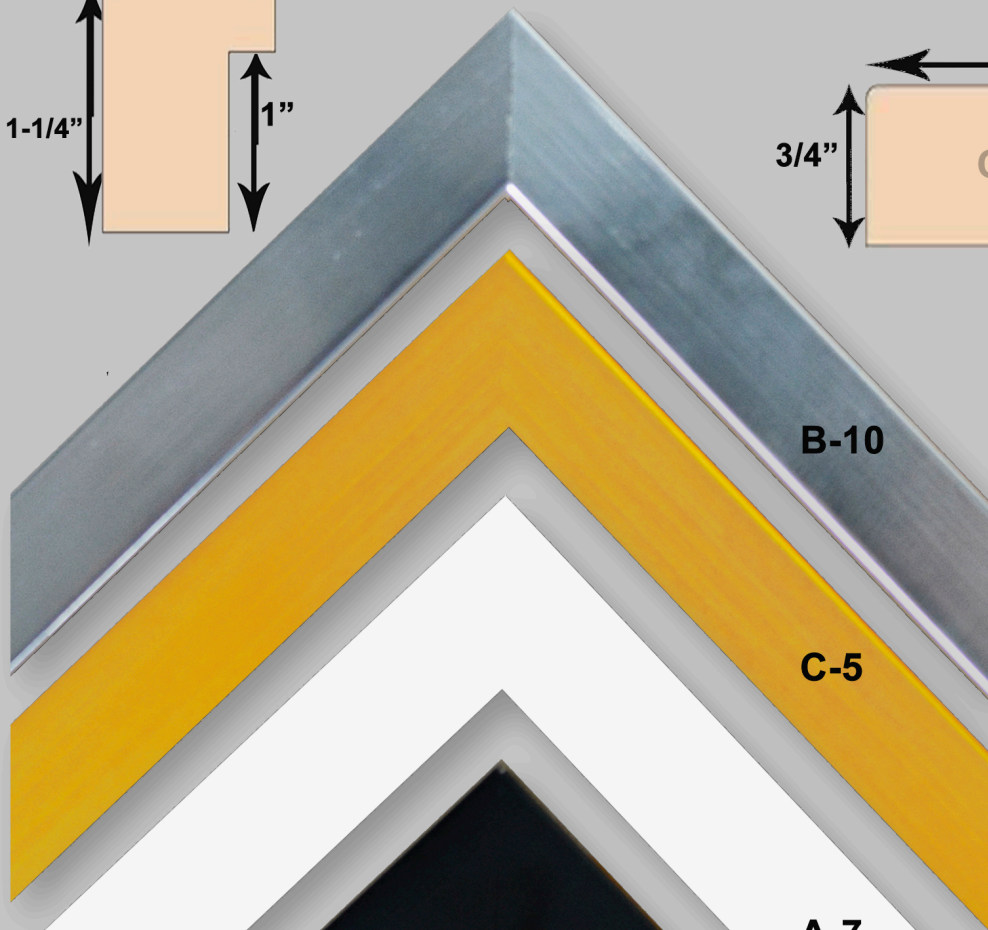
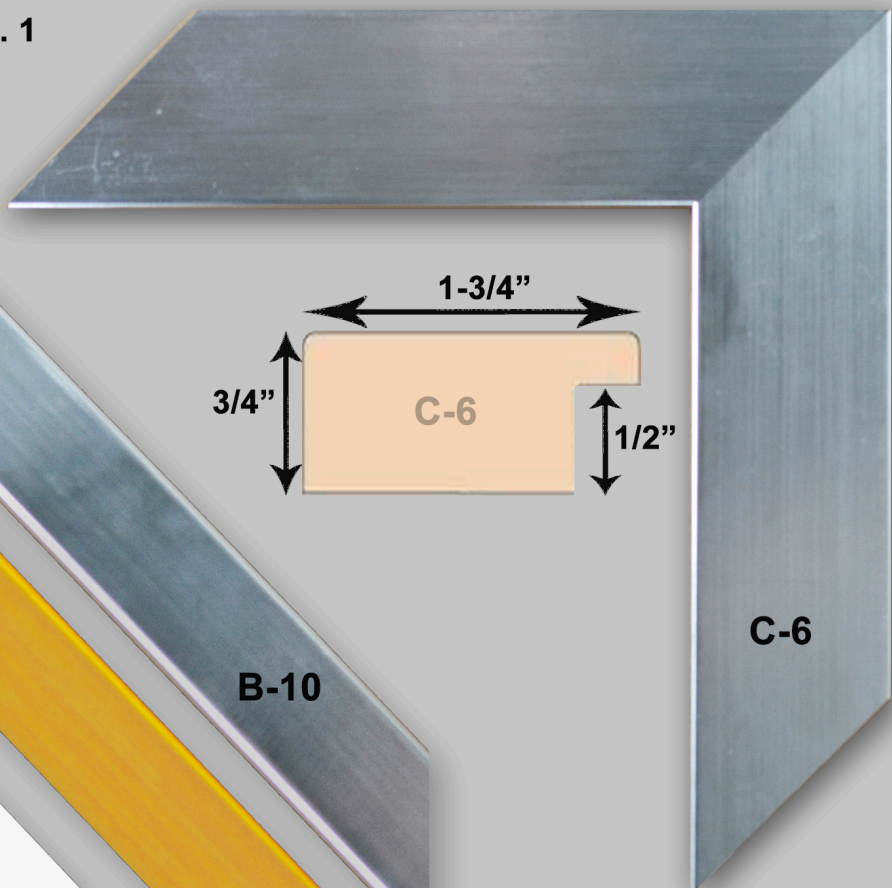
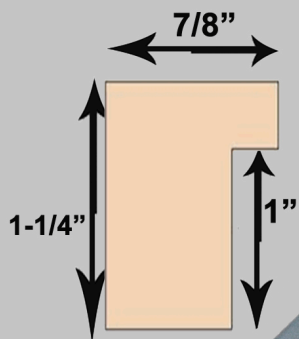
Our Framing Department offers thousands of additional frame styles competitively priced to fit any budget. Expert assistance available with design and selection of the proper materials.



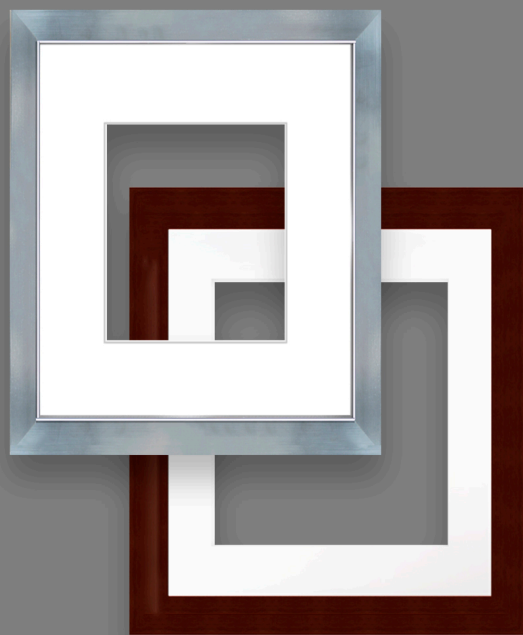
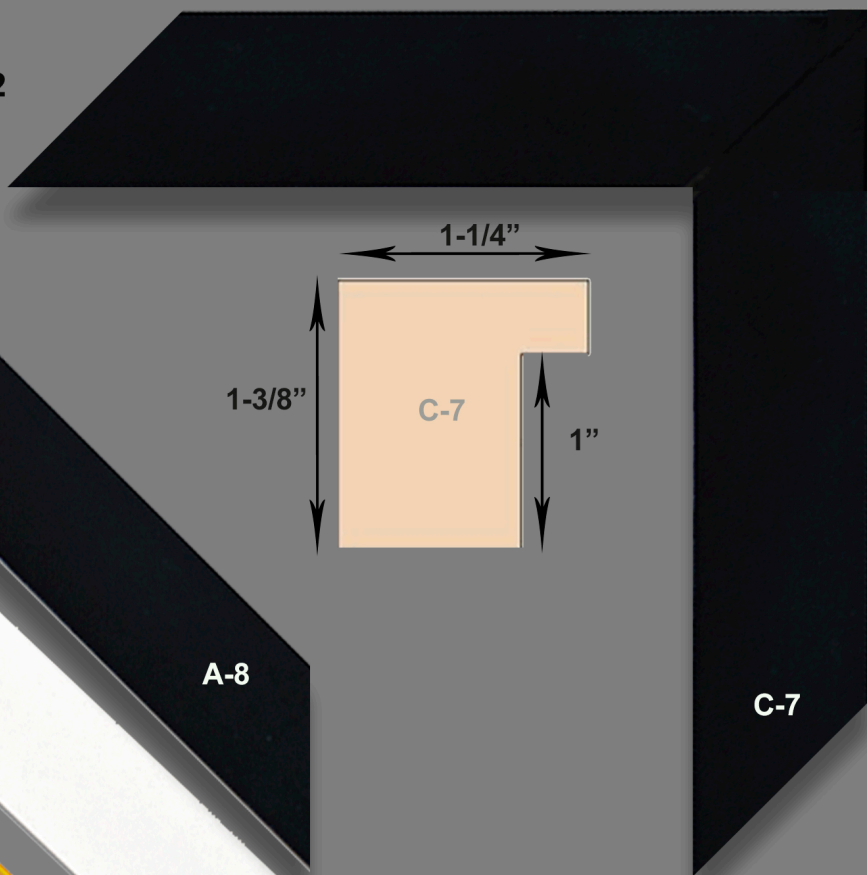
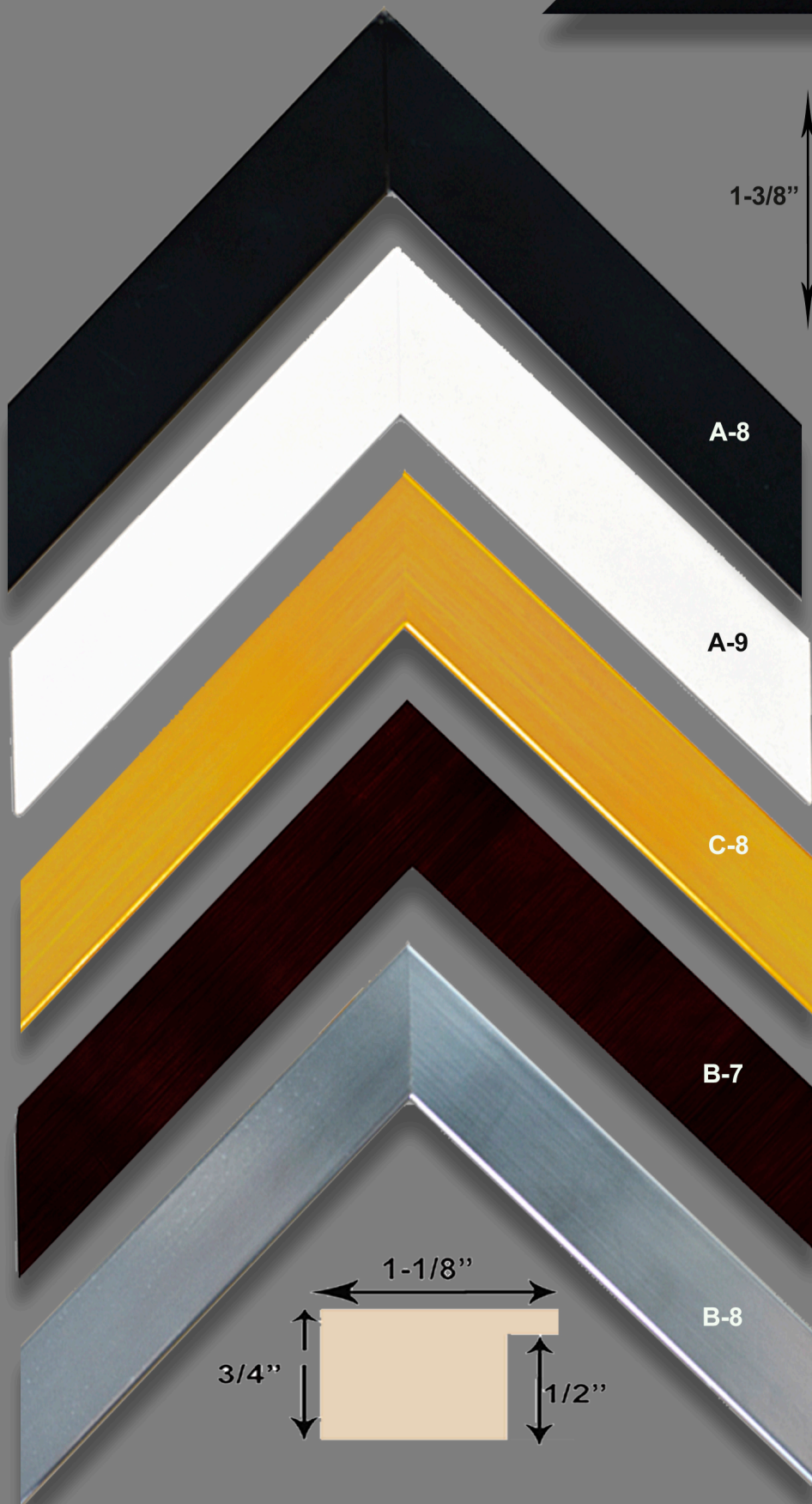
SEE FOLLOWING PAGES FOR AVAILABLE FRAME STYLES

Available Finishes:
Matte Black
Espresso Brown
Shiny Gold
Matte White
Shiny Silver

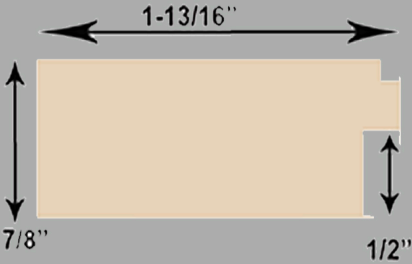
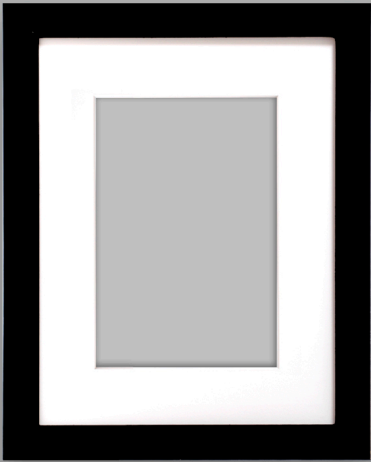
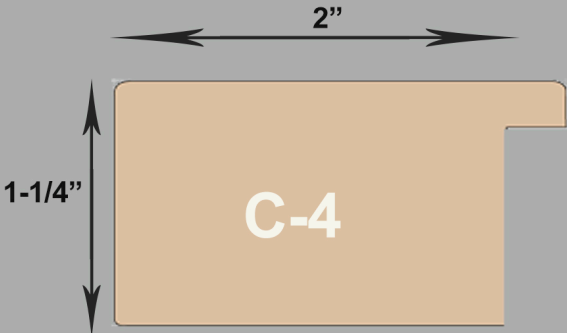
FRAME PACKAGE SAMPLES - PG. 1



FRAME PACKAGE SAMPLES - PG. 2



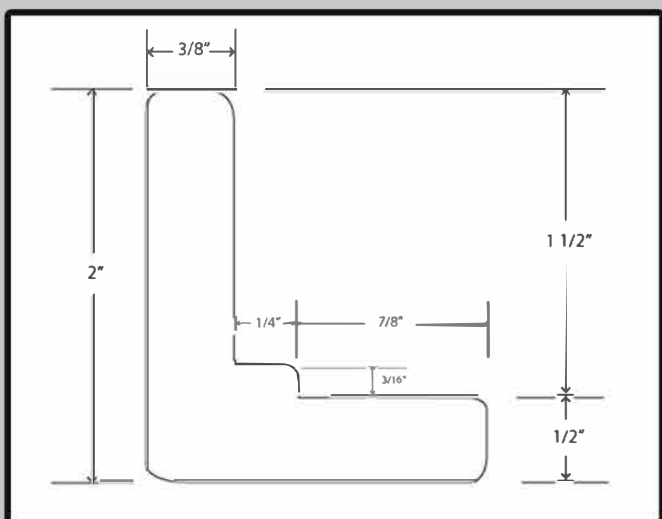
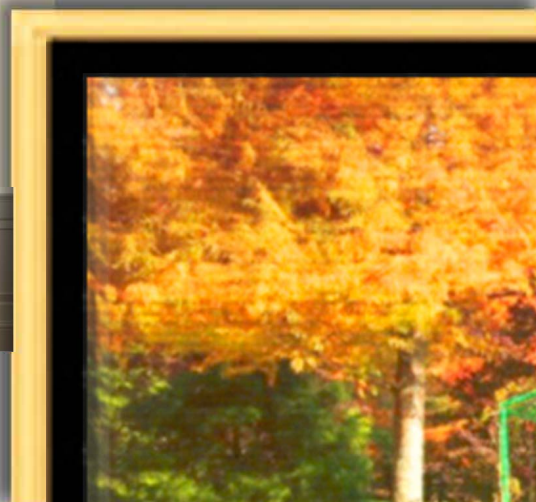
FRAME PACKAGE SAMPLES - PG. 3



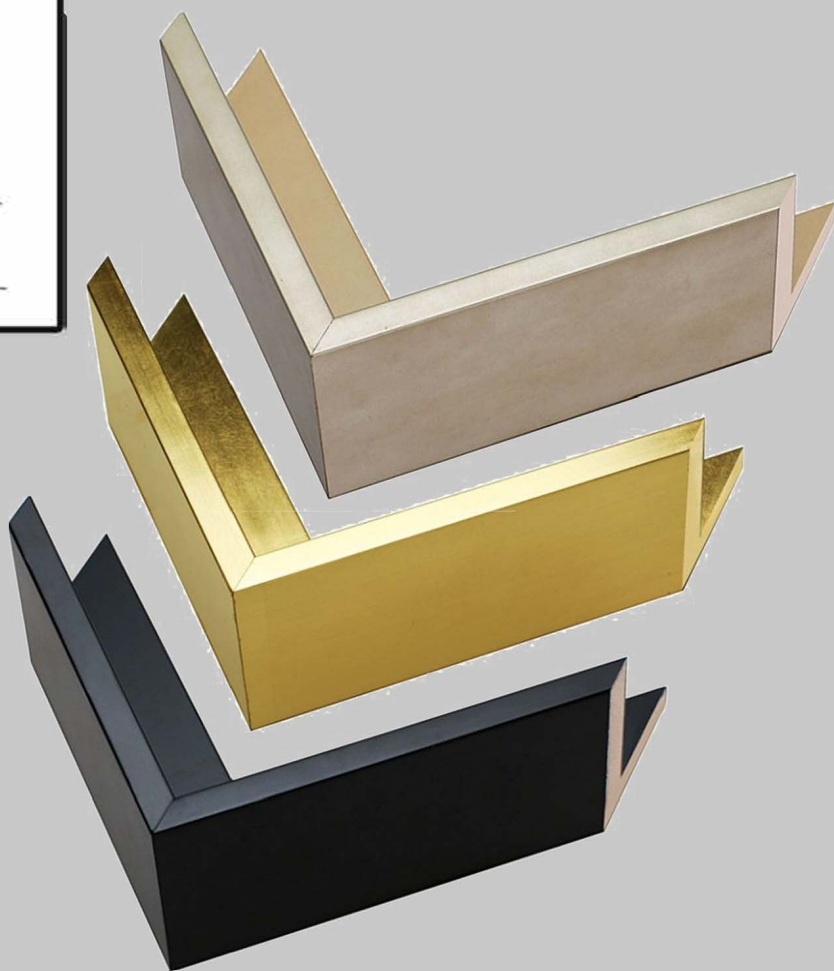
CANVAS "FLOAT" FRAMES



**ADD A "FINISHING TOUCH"
TO YOUR CANVAS WRAPS!**



Canvas Float Frames Available!



BASIC CANVAS FLOAT FRAMES STANDARD SIZES

Frame Size	Gold / Silver	Black / White
11x14	\$ 136	\$105
16x20	\$ 181	\$131
24x30	\$ 256	\$189
30x40	\$ 319	\$245
We cut and build each to exact size; 1/4" offset between canvas and inside of frame.		

Not the right size or finish?

*We also have over 250 additional
Float Frame styles available in ANY size!
Call one of our expert framers to discuss
choices. 404 352 9789*

PRICE LIST

Subject to change without notice.
Online store prices may vary.

MAT & PRESENTATION MATERIALS

PRESENTATION WINDOW MATS - (bevel-cut)				
FINISHED SIZE	4 PLY 100% COTTON RAG MAT w/ AFFC BKG.	8 PLY 100% COTTON RAG MAT w/ AFFC BKG.	4 PLY Conservation Quality MAT w/ AFFC BKG.	8 PLY Conservation Quality MAT w/ AFFC BKG.
11x14	\$25.75	\$74.10	\$19.95	\$28.25
16x20	\$37.15	\$106.71	\$28.85	\$38.65
20x24	\$45.35	\$130.40	\$35.10	\$47.10
24x30	\$55.65	\$160.00	\$43.25	\$57.95
24x36	\$61.85	\$177.85	\$47.95	\$64.15
32x40	\$72.15	\$213.40	\$55.95	\$74.95
40x60	\$135.75	\$393.60	\$105.60	\$173.65

Each mat is custom cut to exact specifications and includes archival art attachment. Opening will be sized to image unless instructed otherwise.

- 100% RISING Cotton rag mat board is the purest museum-quality mat board available.
- Conservation quality mat board is made from acid-free purified alpha-cellulose fibers and suitable to protect fine art and photographs for decades. We do not use or recommend "décor quality" wood pulp mat board.
- 8 PLY matboard is double thickness and provides a dramatic extra-deep bevel.



CLEAR BAG PRINT SLEEVES		
Sold in multiples of 5		
BAG SIZE	PRICE / 5	1/8" ACID-FREE foam board
8.5 x 11	\$1.75	\$3.25 ea.
11 x 14	\$2.20	\$5.25 ea.
13 x 19	\$3.40	\$7.65 ea.
16 x 20	\$3.70	\$7.65 ea.
20 x 24	\$4.80	\$9.25 ea.
24 x 36	\$9.80	\$12.65 ea.
32 x 40	\$18.00	\$14.75 ea.

MOUNTING OPTIONS				
SIZE	DRYMOUNT FOAM CORE BLK OR WHT 3/16"	ARTCARE ARCHIVAL FOAM CORE 3/16"	DRYMOUNT GATORBOARD BLK OR WHT 1/2"	COLD MOUNT FOAM CORE 3/16"
8 x 10	7.25	12.00	19.50	19.50
11 x 14	7.25	12.00	21.00	19.50
16 x 20	10.45	17.30	43.50	29.00
20 x 24	12.75	21.25	64.50	34.50
24 x 30	15.65	26.00	97.50	42.25
24 x 36	17.45	28.95	117.00	47.00
30 x 40	20.90	34.65	144.00	56.25
40 x 60	29.00	48.00	345.00	N/A
48 x 96	197.50	N/A	450.00	N/A
Matte or Gloss Lamination Available. Call for prices.				
Artcare mounting is reversible and archival, Gatorboard resists warping, and Cold Mounting is recommended for Metallic and High Gloss papers.				



MATTED PRINT BUNDLES		
READY TO SELL- STANDARD FRAME SIZES		
10 PRINTS (of 1 image or 5 prints of 2 images) BEVEL-CUT MAT (BLK OR WHT) + BACKING + CLEAR BAGS		
PRINT W/ ARCHIVAL MAT	PHOTO PAPER	FINE ART PAPER
7.5 X 9.5 WINDOW / 11X14 MAT	\$177.50	\$205.00
10.5 X 13.5 WINDOW / 16X20 MAT	\$280.00	\$337.50
PRINT W/ STANDARD MAT	PHOTO PAPER	FINE ART PAPER
7.5 X 9.5 WINDOW / 11X14 MAT	\$125.00	\$165.00
10.5 X 13.5 WINDOW / 16X20 MAT	\$202.50	\$267.50

PRICE LIST

Subject to change without notice.
Online store prices may vary.

SPECIALTY PRINT MEDIA

WOOD PRINTS

Printed directly on 1/2" Maple and includes a recessed frame on back creating a "float" effect.



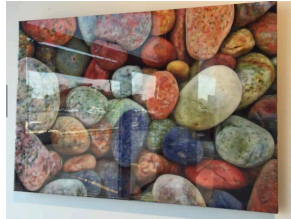
Finished SIZE	Price
11x14	\$81.50
12x12	\$75.50
12x18	\$109.00
16x20	\$149.00
16x24	\$168.50
20x24	\$192.50
20x30	\$230.00
20x60	\$470.00
24x30	\$252.50
24x36	\$305.00
30x40	\$372.50
40x60	\$819.00
Panoramic Sizes	
12x24	\$135.00
12x36	\$200.00
20x60	\$549.00

ALUMINUM PRINTS

Dye infused specially coated aluminum sheets. Colors are vibrant and luminescent. Excellent image quality and includes a recessed support hanger on back creating a "float" effect.

Finished SIZE	3/16" thickness
11x14	\$109.50
12x18	\$122.63
16x20	\$153.63
16x24	\$191.13
20x24	\$208.00
20x30	\$258.75
24x30	\$361.88
24x36	\$427.50
30x40	\$549.38
36x48	\$1,138.75
40x50	\$1,023.13
40x60	\$1,143.13
PANORAMIC SIZES	
8x24	\$123.00
8x32	\$156.75
10x30	\$166.13
12x24	\$154.88
12x36	\$205.75

Larger (up to 48"x96") and custom sizes available.
Please request quote.



ACRYLIC PRINTS

NEW! 3 Thicknesses available.

Acrylic Prints – in basic terms are pictures on glass. It is an exciting medium that permits printing of any photo onto an acrylic panel. Colors are more vivid, glossy, with a higher contrast resolution. Printed directly on acrylic and includes a recessed support hanger on back creating a "float" effect.

Finished SIZE	1/8" thick	1/4" thick	3/8" thick
11x14	\$135.00	\$161.00	\$185.00
12x18	\$155.00	\$199.00	\$235.00
16x20	\$178.00	\$232.00	\$286.00
16x24	\$182.00	\$250.00	\$322.00
20x24	\$225.00	\$358.00	\$458.00
20x30	\$283.00	\$414.00	\$536.00
24x30	\$318.00	\$446.00	\$578.00
24x36	\$428.00	\$604.00	\$748.00
30x40	\$567.00	\$769.00	NA
36x48	\$855.00	\$1,181.00	NA
40x50	\$875.00	\$1,201.00	NA
40x60	\$1,085.00	\$1,473.00	NA
PANORAMIC SIZES			
8x24	\$125.00	\$182.00	\$210.00
8x32	\$174.00	\$228.00	\$274.00
10x30	\$174.00	\$228.00	\$274.00
12x24	\$159.00	\$198.00	\$248.00
12x36	\$182.00	\$250.00	\$322.00
16x48	\$328.00	\$478.00	NA

Aluminum "barrel post mounting hardware and cleat hangers are available. Custom and sizes not shown are available up to 48" x 96" and require quote.



1/8" Thick



1/4" Thick



PRICE LIST

Subject to change without notice.
Online store prices may vary.

MARKETING & PROMOTIONAL MATERIALS

We have many other promotional materials available to help support your sales efforts. Call us for larger quantities or add'l materials.



GENUINE GICLÉE Certificates of Authenticity

8.5"x11" Parchment Paper
w/ Embossed Gold Seal
\$20 / pkg. of 10

COA's have traditionally been provided by the artist for all limited edition prints. They "attest" to the stated number of prints being offered, including proof prints, museum prints, printer proofs, etc. They distinguish your fine art prints from lesser quality reproductions.

MARKETING INFO FOR ARTISTS

"How To Profit from the Art Print Market" Practical Advice for Visual Artists by Barney Davey. <i>An excellent guide for the self-publishing artist in marketing and selling of fine art reproductions. Soft cover - 280 pages.</i>	\$24.95
"How to Sell Art to Interior Designers" by Dick Harrison & Barney Davey <i>Locate, approach and sell to interior designers, art consultants, etc. Soft cover 170 pages</i>	\$20.00
"Guerrilla Marketing For Artists" by Barney Davey. <i>Seize control of your career and create a loyal customer base. Soft cover 186 pages.</i>	\$20.00
"How to Market Art Online Now" by Barney Davey. <i>Useful ideas about websites, email marketing, blogging and much more. Soft cover 152 pages</i>	\$13.00
FREE W/ ANY BOOK PURCHASE: E-Book - "How to Price Digital Fine Art Prints"	

PREMIUM GREETING CARDS		
SIZE/ QTY	25-100	101-500
4-1/4 x 5-1/2	\$2.75	\$2.60
4x5 or 4x6	\$2.75	\$2.60
4x8	\$3.75	\$3.25
5x5 or 5x7	\$3.75	\$3.25
5-1/4 x 8	\$3.75	\$3.25
Full Color, 2-Sided, incl. photos, text, etc.		
Paper choices include: linen texture, pearlescent, or smooth matte.		
Includes gold or silver lined, plain white or brown kraft paper envelopes.		

Basic layout included at no additional charge

	BUSINESS CARDS			
SIZE/ QTY	100	250	500	1000
2 x 3-1/2	\$32.00	\$47.00	\$64.00	\$79.00
	14 PT GLOSS OR 16 PT MATTE CARD STOCK			
	POSTCARDS			
SIZE/ QTY	100	250	500	1000
4 x 6	\$67.00	\$83.00	\$110.00	\$145.00
5-1/2 x 8-1/2	\$135.00	\$184.00	\$209.00	\$239.00
5 x 7 or 4 x 9	\$99.00	\$138.00	\$168.00	\$195.00
	Full Color, 2-Sided			
	14 PT GLOSS OR 16 PT MATTE CARD STOCK			
	FOLDED GREETING CARDS			
SIZE/ QTY	100	250	500	1000
4 x 6	\$179.00	\$225.00	\$269.00	\$319.00
5 x 7	\$249.00	\$319.00	\$385.00	\$445.00
	Full Color, 2-Sided, w/ white envelopes			
	14 PT GLOSS OR 16 PT MATTE CARD STOCK			
	FLYERS or TRI-FOLD			
SIZE/ QTY	100	250	500	1000
8-1/2 x 11	\$198.00	\$245.00	\$289.00	\$329.00
	Full Color, 2-Sided			
	100 LB. GLOSS BOOK OR 80 LB. MATTE			
	POSTERS			
SIZE/ QTY	10 - 50			
18 x 24	\$9.00 EACH			
24 x 36	\$16.50 EACH			
	165 gsm, 7 mil semi-gloss paper			

PACKING & SHIPPING PRICE LIST

BLIND DROP SHIP (No invoice in package) TO YOUR CUSTOMERS AT NO ADD'L CHARGE

ENVELOPE	FITS	USPS	UPS ground
9x12 padded-priority	up to 3 8.5x11 proof prints	9.00	18.00
12x16 padded- priority	up to 5 11x14 prints	9.00	18.00
proof prints USPS 1 st Class	up to 3 8.5x11 proof prints	3.40	

BOX	<u>2-DAY, NEXT DAY & INT'L SHIPPING REQUIRES QUOTE</u>		
18x13x2	1 canvas up to 11x14	12.00	18.00
20x16x6	up to 2- 12"x16" canvas	12.00	21.00
24x18x3	1 canvas up to 16x20		21.00
24x20x6	up to 2- 16"x20" canvas		24.00
24x30x5	up to 2- 20"x26" canvas		27.00
36x24x5	up to 2- 20"x32" canvas		34.00
36x30x5	up to 2- 24"x32" canvas		52.00
42x36x6	up to 2- 32"x40" canvas		75.00
50x40x8	up to 2- 36"x48" canvas		175.00
(50x40x8 w/ \$1000 ins)	up to 2- 36"x48" canvas		225.00

TUBE	<u>2-DAY, NEXT DAY & INT'L SHIPPING REQUIRES QUOTE</u>		
standard tube up to 44"	up to 4 prints 32"x42"	17.50	36.00
large tube - 50" - 60"	up to 6 prints 48"x55"	21.00	40.00
small tube 3"X 18"	up to 4 prints 16x20	14.00	36.00