

## Retrofit Kit 120w



### DESCRIPTION:

Touch-Plate's Retrofit Kit Lights are designed to offer better security, more lumens, and higher cost savings. Our Retrofit Kit Lights can offer energy savings of 70% or greater over traditional metal halide or high pressure sodium lighting. Our LEDs are optimal for retrofit installations.

### PRODUCT FEATURES:

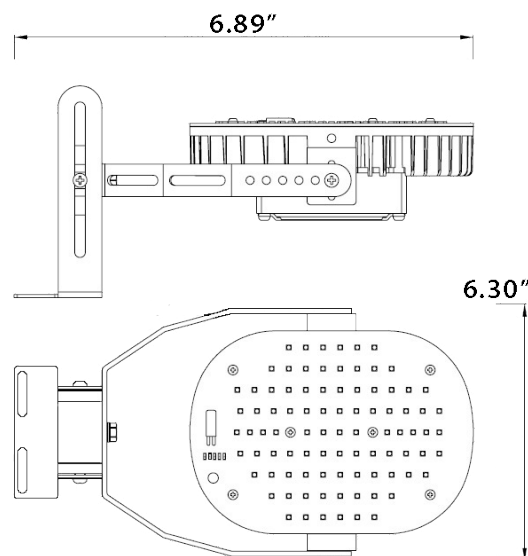
- Diecast aluminum housing
- No flickering or humming
- Light is soft and uniform, safe for eyes
- Multiple mounting bracket options
- Lifetime of 50,000 hrs or greater
- UL Listed (E474059)
- DLC Listed
  - SNC-RKPUS-120wD2
- 5 Year Limited Warranty

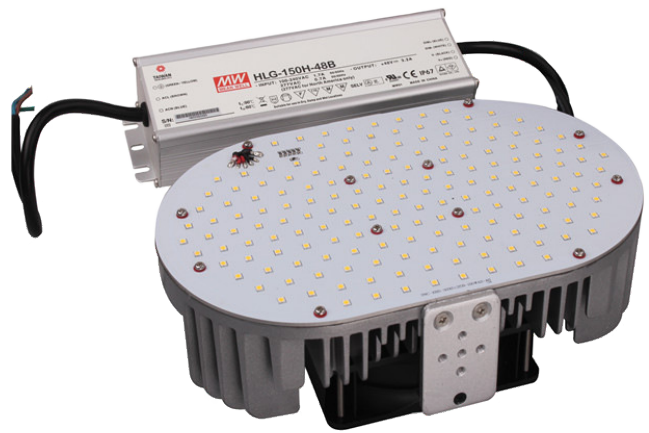
### SPECIFICATIONS:

- Wattage: 120w
- Lumens: 16,200 (approx > 135lm/w)
- Equivalence: 400w HID/HPS/MH
- IP Rating: IP40
- LED Chips: Philips 3030, Sunon fan
- PF: >0.90
- Beam Angle: 120°

### PHYSICAL PARAMETERS:

- Dimensions
  - Width 6.75"
  - Length: 10.5"
  - Height: 4.0"
- Weight
  - 5.2 lbs



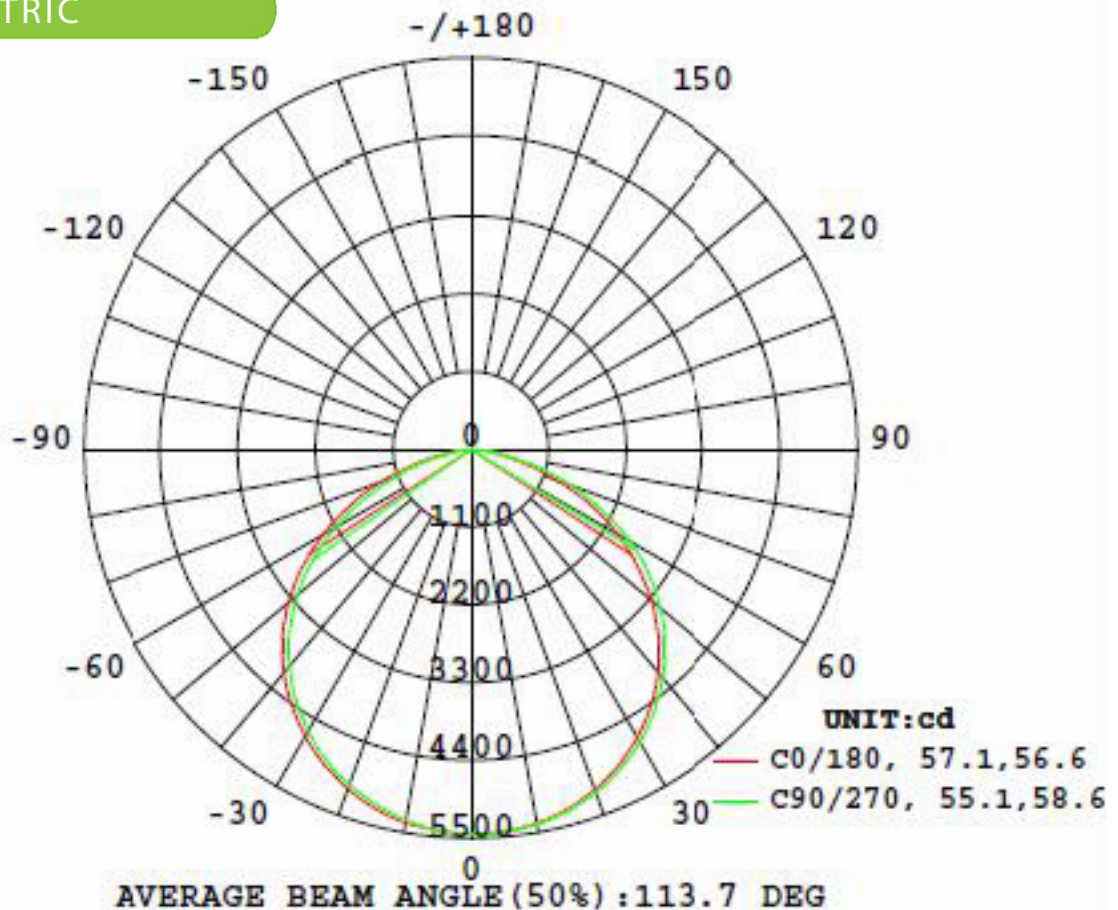


## Retrofit Kit

### ORDERING GUIDE

LED Type XXX -	Lumens - Wattage XXX - XXX-	CCT XX	Voltage X	
<ul style="list-style-type: none"> <li><b>RKO</b> Retrofit Kit (Oval)</li> </ul>	<ul style="list-style-type: none"> <li><b>162-120</b> 16,200lm -120w</li> </ul>	<ul style="list-style-type: none"> <li><b>40</b> 4000k</li> <li><b>45</b> 4500k</li> <li><b>50</b> 5000k</li> <li><b>57</b> 5700k</li> </ul>	<ul style="list-style-type: none"> <li><b>U</b> 120-277v</li> </ul>	

### PHOTOMETRIC





# Retrofit Kit

## INSTALLATION INFORMATION (WIRING)

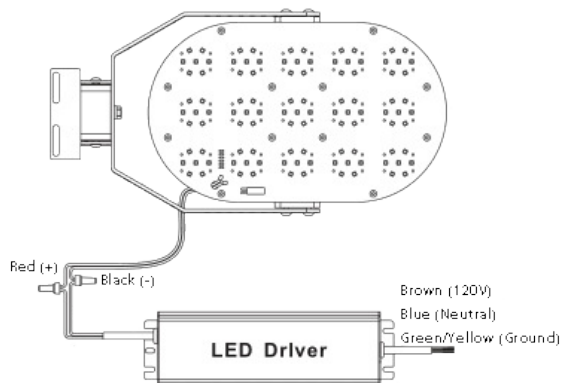
This product must be installed in accordance with National Electrical Code(NEC) and/or applicable local codes, by a qualified electrician.

### **DANGER - RISK OF SHOCK - DISCONNECT POWER BEFORE INSTALLATION**

- Make the necessary 'HOT' (Black or Brown), 'Neutral' (White or Blue), and 'Ground' (Green) connections in an approved junction box.

## INSTALLATION INFORMATION

- Remove the old ballast or disconnect the ballast from the existing fixture.
- Wire the load to the provided driver: Red (+) and Black (-).
- Wire the line to the provided driver: Brown (120V), Blue (Neutral), and Green/Yellow (Ground).



- Affix the Mounting Bracket onto the LED with the provided M6 screw, spring washer, and nut.
- Adjust the LED direction by moving the M6 screw and nut.
- Install the new LED.

