

# Divine Essence®

## Aerium® PRO USER'S MANUAL


Therapeutic Diffuser  
for Essential Oils  
Cold Air Nebulizer



**CONGRATULATIONS! THANK YOU FOR PURCHASING THIS HIGHLY DEPENDABLE AND EFFECTIVE AROMATHERAPY DIFFUSER. IT WILL GREATLY IMPROVE THE QUALITY OF THE AIR YOU BREATHE.**

We hope you will enjoy the benefits of aromatherapy whether at home or at work. If maintained properly, your diffuser can last many years. The Aerium® PRO essential oil therapeutic diffuser is a glass nebulizer which uses a process of cold vaporization of essential oils. It is designed to vaporize and disperse extremely fine particles of essential oils directly into the air. This process avoids heating and altering the oils. The micro-drops of essential oils will purify the air, providing a cleaner and fresher atmosphere for several hours. The Aerium® PRO essential oil therapeutic diffuser is an excellent natural method to effectively fight against airborne bacteria, virus, mildew, cooking odours, pet smells, tobacco smoke, insects (particularly dust mites in carpets) and much more...

Choose from a range of Divine Essence® organic essential oils and formulas for diffusion, and discover the extraordinary therapeutic benefits for both the nervous and respiratory systems.



**WARNING**

- PLEASE READ INSTRUCTIONS CAREFULLY BEFORE USE.
- FRAGILE GLASS: HANDLE WITH EXTREME CARE!
- NEVER EXCEED THE MAXIMUM FILLING LEVEL!
- SAVE THESE INSTRUCTIONS FOR FUTURE REFERENCE.

Be careful when handling the diffuser. The glassware is fragile and not securely attached to the wooden base. Be sure to hold the wooden base in one hand while the glassware is in the other.

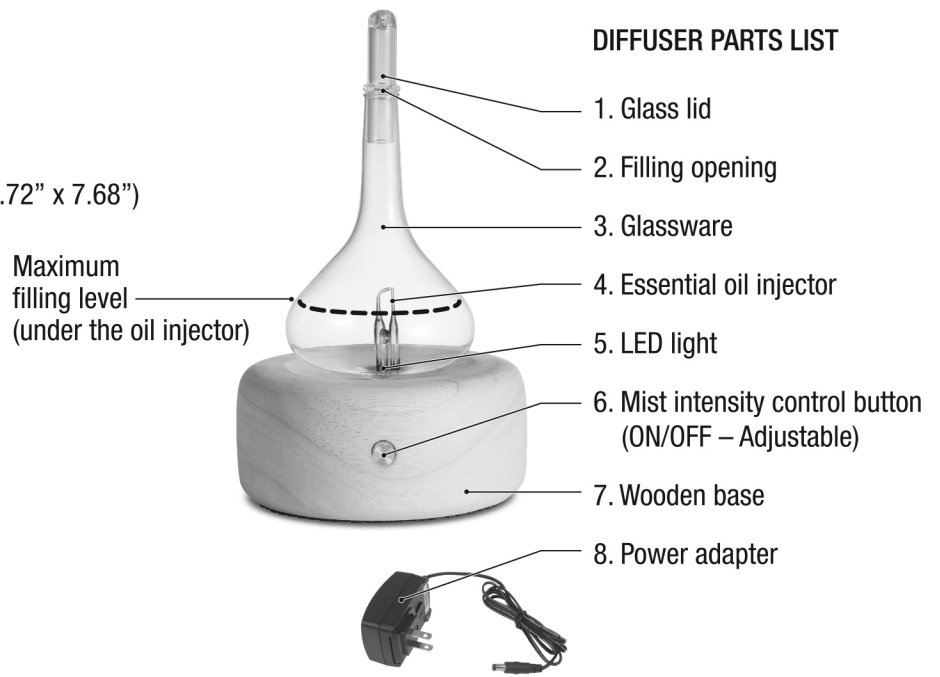
- Keep out of reach of children.
- It is not necessary to clean the diffuser when you change the essential oil. Experiment with your blends.
- Only use the quantity of essential oil required for the period of diffusion. Close your bottle securely after use.
- Do not leave essential oil sitting in the diffuser for extended periods of time. Empty the glassware when the device is not in use.
- Install the diffuser on a secure stable surface.
- Do not remove components from the diffuser while it is in operation.
- It is preferable to run the diffuser in a room temperature between 10° and 30° C.
- Do not cover the diffuser or remove the glass lid while in use.
- Do not use chemical products (acids, alkaline, etc.) or any corrosive detergents to clean the appliance.
- Do not allow the base to come into contact with water.
- Avoid contact of essential oil with the mouth and eyes.
- Avoid over-saturating the air in your room. Do not run the diffuser continuously.
- Avoid running the diffuser with children under 2 years of age without medical advice.
- Some essential oils are flammable. Do not use the diffuser near open flames (candles, cigarettes) or sparks.
- Avoid moving or shaking the diffuser or pulling on the power adapter and/or the cable while it is in use.
- Never use the diffuser if the power adapter or the cable are damaged.
- The diffuser must only be used with the power supply unit provided with the device.
- Unplug the diffuser before cleaning or refilling.
- Always unplug the power adapter after use. Do not pull on the electrical cord.
- USE ONLY PURE ESSENTIAL OILS IN THE DIFFUSER, OILS FROM ORGANICALLY GROWN PLANTS ARE PREFERABLE.

## FEATURES

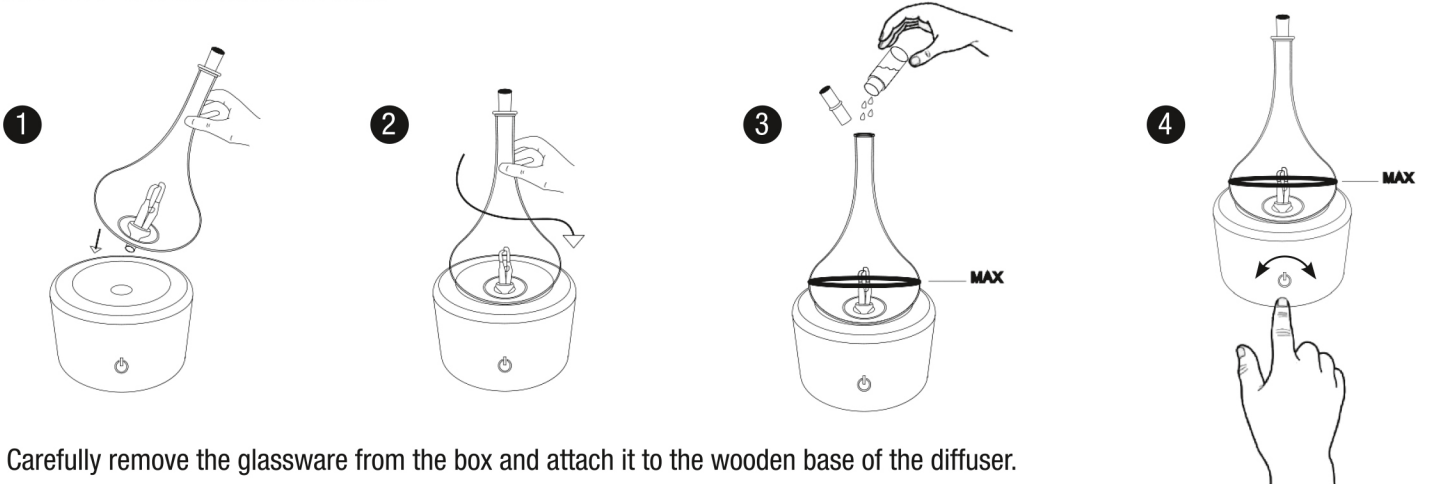
- Input power supply: AC 100-240V, 50 / 60Hz
- Output power supply: DC 10.5V 200mA
- Dimensions: approx. 12 x 12 x 19.5 cm (4.72" x 4.72" x 7.68")
- Recommended for use in a room up to 1000 square feet / 93 m<sup>2</sup>

Verify that all parts are included in the original box.  
See the diffuser parts list.

## DIFFUSER PARTS LIST



## ASSEMBLY & OPERATING INSTRUCTIONS



- 1 Carefully remove the glassware from the box and attach it to the wooden base of the diffuser.
- 2 Press down gently while rotating the glassware from left to right.
- 3 Add 20 to 30 drops of 100% pure and natural essential oils into the filling opening of the glassware.  
**Never exceed the maximum filling level! Overfilling can result in serious damage to the diffuser.**  
**Clean immediately any oil which spills on the diffuser or on furniture, objects, etc...**  
Place the glass lid into the filling opening.  
Connect the power adapter to a wall outlet and the cable into the wooden base.
- 4 **To start** : turn the mist intensity control button to the right and set the desired diffusion flow.  
Diffusion cycle: 2 minutes active and 1 minute paused. Auto-stop after 2 consecutive hours.  
For a shorter diffusion adapted to your therapeutic needs, manually stop the diffuser before the end of the diffusion cycle.  
The light will automatically change colors (5 colors).
- 5 **To turn off**: turn the mist intensity control button to the far left.

## CLEANING INSTRUCTIONS

1 - In order to obtain optimal performance from your diffuser, it is highly recommended to clean it on a regular basis:

- Normal usage (once a day): the diffuser should be cleaned at least once a month.
- Intensive usage (multiple times a day): the diffuser should be cleaned at least twice a month.

2 - Pour 15ml of 70% rubbing alcohol (sold at pharmacies) into the filling opening of the glassware:

- Run for 5 to 30 minutes. Avoid breathing in the alcohol mist.
- Unplug and shake the glassware thoroughly (holding it by its base with your thumb on the filling opening) until all of the sticky residue that has accumulated on the inner walls have dissolved.
- Remove the rubbing alcohol and allow the glassware to dry out completely before using.
- If the glassware is very dirty please repeat cleaning operation a second time.
- **Never use water or soap (or any type of cleaner) to clean the diffuser!**
- **Never dry the diffuser in the dishwasher or in the oven!**

3 - Is the diffuser still not working properly after cleaning? The glass oil injector may be clogged.

- Make sure device is unplugged before cleaning. Attach (with tape) 2 inches of fishing wire 20lb. or a very fine strand of copper wire to the tip of a pen.
- Gently insert the fine wire through the filling opening into the essential oil injector to unclog it (see Fig.1). Do not touch the essential oil injector with the metal point of the pen!
- Rinse out with rubbing alcohol and allow the nebulizer to dry out completely before using.
- **Never use a needle (or any strong metallic object) to unclog the nebulizer as the oil injector could break instantly!**
- If you still cannot unclog the essential oil injector, please consult our website (FAQ) or call our customer service department at 1-800-344-9676.

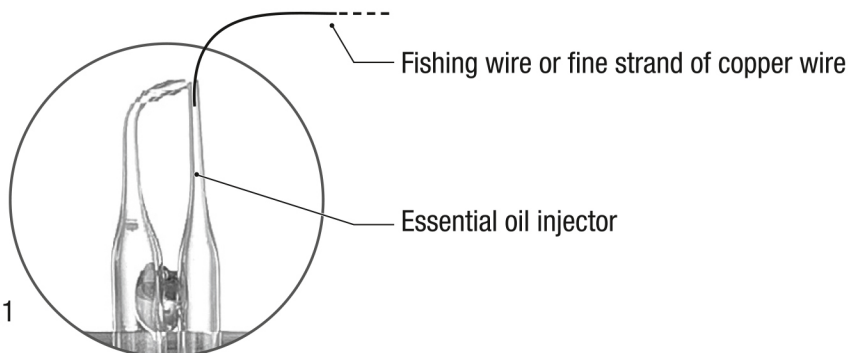


Fig.1

## WARRANTY

UNION NATURE® guarantees for a period of 1 full year from date of original purchase, the Aerium® PRO Therapeutic Diffuser for Essential Oils (Cold Air Nebulizer) against all manufacturing defects under normal use. However, the guarantee does not cover misuse or neglect (it does not include breakage of the glassware). UNION NATURE® is not responsible for any accidents due to misuse or mishandling of the diffuser. Please keep your sales receipt.



### CAUTION

- RISK OF ELECTRICAL SHOCK.
- DO NOT OPEN, DO NOT EXPOSE TO RAIN OR HUMIDITY.
- UNPLUG DEVICE DURING LIGHTNING STORMS.