



i**JACKSON**
GUITARS

UNCONVENTIONAL

SINCE DAY ONE, JACKSON HAS EPITOMIZED THE UNCONVENTIONAL. IN FACT, WHEN GROVER JACKSON AND RANDY RHODES DESIGNED THAT FIRST GUITAR TOGETHER, IT WOULD HAVE CARRIED THE CHARVEL LOGO IF NOT FOR THE FEAR THAT THE DESIGN WAS TOO RADICAL AND WOULD HURT THE CHARVEL NAME. AS A RESULT, IT BECAME THE FIRST JACKSON. THE REST IS HISTORY. THIS EVENT MORE OR LESS SET THE COURSE FOR JACKSON FOR YEARS TO COME. TODAY JACKSON IS RECOGNIZED AS MUCH FOR WHAT IT ISN'T AS WHAT IT IS. WHAT IT ISN'T, IS A "MIDDLE OF THE ROAD GUITAR". WHAT IT IS, IS A GUITAR WITH AN EGO AND AN IDENTITY THAT IS AS HUGE AS IT'S SOUND.

LET'S FACE IT. THERE ARE A LOT OF WAYS YOU CAN GO WHEN CHOOSING AN INSTRUMENT.

YOU CAN FOLLOW THE MASSES, OR YOU CAN WIND YOUR WAY THROUGH THE MYRIAD OF POSSIBILITIES WITH THE HOPE OF FINDING A GUITAR THAT'S MEANT FOR YOU.

OBVIOUSLY A JACKSON IS NOT FOR EVERYONE. THE TRUTH IS, YOU PROBABLY EITHER LOVE US OR HATE US AND QUITE FRANKLY, WE WOULDN'T HAVE IT

ANY OTHER WAY. OUR GOAL IS NOT TO TRY TO APPEAL TO EVERY

LAST GUITAR PLAYER ON EARTH BUT RATHER TO OFFER THE

MOST UNIQUE AND INDIVIDUALLY STYLED

INSTRUMENTS IN THE WORLD.



jACKSON



PAGE 2 & 3 - RHOADS

PAGE 4 & 5 - SOLOIST

PAGE 6 & 7 - KELLY

PAGE 8 & 9 - DINKY

PAGE 10 & 11 - KV

PAGE 12 & 13 - JJ

PAGE 14 & 15 - PC

PAGE 16 & 17 - SURFCASTER & BASSES

PAGE 18 & 19 - CONCERT BASSES

PAGE 20 & 21 - PERFORMERS & JS

PAGE 22, 23, & 24 - CUSTOM SHOP

INSIDE BACK COVER - FINISH OPTIONS

RHOADS

CREATED IN CONJUNCTION WITH THE LATE GREAT RANDY RHOADS, THE RHOADS GUITAR IS THE ORIGINAL JACKSON AND THE BENCHMARK OF THE JACKSON LINE. HEAVY METAL? THE USA MADE RR1 DEFINES THE MEANING OF THE TERM. IT FEATURES NECK THROUGH BODY CONSTRUCTION, DUNCAN TB-4 AND SH-2 HUMBUCKERS, EBONY FINGERBOARD WITH MOTHER OF PEARL SHARKFIN INLAY, AND AN ORIGINAL FLOYD ROSE TREMOLO MANUFACTURED BY SCHALLER. THE RR3 IS THE MORE AFFORDABLE BOLT-ON COUNTERPART EQUIPPED WITH DUNCAN DESIGN HUMBUCKERS, ROSEWOOD FINGERBOARD, SHARKFIN INLAY, AND THE JT580LP TREMOLO. RR3 IS AVAILABLE WITH A FLAME MAPLE VENEER TOP.

RR1

BODY Poplar
 NECK Maple/Neck-Thru
 FINGERBOARD Bound Ebony / Pearl sharkfin
 SCALE 25.5 in./22 Fret
 BRIDGE Floyd Rose Orig.
 NECK PICKUP Duncan SH-2
 BRIDGE PICKUP Duncan TB-4
 FINISHES MBK, DCR, CBL
 (EDS, SKULLS, LTG SKY optional)

RR3 & RR3 REVERSE

BODY Poplar (Maple veneer)
 NECK Maple/Bolt-on
 FINGERBOARD Rosewood
 SCALE 25.5 in./22 Fret
 BRIDGE JT-580LP
 NECK PICKUP DD103N
 BRIDGE PICKUP DD103B
 FINISHES MBS, BLK
 (TR, TB)

RR3

RR3 R

**ROSWELL
 RHOADS**

BODY Poplar
 NECK Maple/Bolt-on
 FINGERBOARD Rosewood
 SCALE 25.5 in./22 Fret
 BRIDGE Tunamatic
 BRIDGE PICKUP DD103B
 FINISHES BLK,MBS

SOLOIST SUPERLIGHT

THE SLS SOLOIST SUPERLIGHT IS SOMEWHAT OF A DEPARTURE FOR JACKSON. SLIGHTLY SMALLER AND MORE ROUNDED THAN THE REGULAR SOLOIST WITH ABOUT 1/2 THE THICKNESS, THE SLS'S MAHOGANY NECK AND BODY COMES WITH A DUNCAN PEARLY GATES IN THE BRIDGE AND DUNCAN JAZZ IN THE NECK.

SLS SOLOIST SUPERLITE
BODY Mahogany/ Flame Maple
NECK Mahogany/Neck-Thru
FINGERBOARD Bound Rosewood
SCALE 25.5 in./22 Fret
BRIDGE Tunomatic GB100
NECK PICKUP Duncan SH-2
BRIDGE PICKUP Duncan Pearly Gates
FINISHES BCSB, TBL

FLAVIA / DRAIN




SOLOIST

SLI

BODY Poplar
NECK Maple/Neck-Thru
FINGERBOARD Bound Ebony
SCALE 25.5 in./24 Fret
BRIDGE Floyd Rose Orig.
NECK PICKUP Duncan STK-S1
MIDDLE PICKUP Duncan STK-S1
BRIDGE PICKUP Duncan TB-4
FINISHES MBK, BGP, DCR, GMG
(SKLS, EDS, LTG SKY
optional finishes)

Quite simply, there are two characteristics that set the Soloist apart from its rivals. Playability and sustain. The SLI's combination of neck through body, heel-less construction, neck profile, and compound radius fingerboard, result in a feel and sound that is unlike any other instrument. Coupled with Duncan pickups as standard equipment, there really isn't anything that even comes close. For 1998 we are also offering a limited number of the early 80's version of this Jackson classic, via the Shannon Soloist. Mike Shannon has been with Jackson since the beginning and built the early guitars that are now widely sought by collectors. These will be hand built by Mike, individually numbered, and will have the same specs as the early models, i.e. non-recessed tremolo, bound fret ends, and 4 degree neck angle.



Shannon Soloist

BODY Poplar
NECK Maple /
neck through body
FINGERBOARD Bound Ebony / Pearl Sharkfin
SCALE 25.5 in./24 Fret
BRIDGE Original Floyd Rose
NECK PICKUP Duncan SSL5V
MIDDLE PICKUP Duncan SSL5V
BRIDGE PICKUP Duncan Pearly Gates
FINISHES Black, Slime Green,
(Blue Ghost Flames optional)



Jacksonguitar.ru

FEW GUITARS HAVE THE VISUAL AND AURAL IMPACT OF THE KELLY. ONCE ONLY AVAILABLE THROUGH THE CUSTOM SHOP, THE KELLY HAS NOT SO QUIETLY BECOME ONE OF MARTY'S MAIN INSTRUMENTS IN THE LAST FEW YEARS AND WHOSE CONSTANT TOUR SCHEDULE KEEPS THE GUITAR IN FRONT OF THE MASSES NIGHT AFTER NIGHT. MARTY'S MAIN INSTRUMENT IS THE KE1 SIGNATURE MODEL WHICH FEATURES AS MARTY'S GUITAR ONLY WITH AN ADDED DUNCAN SH-2 IN THE NECK AND AN ORIGINAL FLOYD ROSE. THE KE3 IS THE BOLT-ON COUNTERPART OF THE



KE 2

BODY	Poplar
NECK	Maple/Neck thru
FINGERBOARD	Ebony / Pearl Sharkfin
SCALE	25.5 in./24Fret
BRIDGE	Original Floyd Rose
NECK PICKUP	Duncan SH-2
BRIDGE PICKUP	Duncan TB-4
FINISHES	BLK, PP

KE 1

BODY	Poplar, (Maple)
NECK	Maple/Neck-Thru
FINGERBOARD	Bound Ebony
SCALE	25.5 in./24 Fret
BRIDGE	Kahler APM3310
NECK PICKUP	N/A
MIDDLE PICKUP	N/A
BRIDGE PICKUP	Duncan TB-4
FINISHES	BLK,SWP, (TBK)

MARTY
FRIEDMAN / MEGADETH

THE MOST WIDELY PLAYED JACKSONS EVER. THIS IS LARGELY DUE TO THE LYRICAL VIRTUOSITY OF MARTY FRIEDMAN, WHO HAS ADOPTED IT AS HIS MAIN INSTRUMENT WHICH IS FITTED WITH THE KAHLER APM3310 BRIDGE AND SINGLE DUNCAN TB-4 HUMBUCKER. NEW THIS YEAR IS THE KE2, WHICH OFFERS THE SAME BASIC AND COMES WITH DUNCAN DESIGN HUMBUCKERS, JT580LP TREMOLO, SHARKFIN INLAY, AND EITHER THE STANDARD OR REVERSE JACKSON HEADSTOCK.



KE3 (KE3 REVERSE)

BODY Poplar, (Flame Maple Veneer)
NECK Maple/Bolt-on
FINGERBOARD Rosewood
SCALE 25.5 in./24Fret
BRIDGE JT-580LP
NECK PICKUP DD102N
MIDDLE PICKUP N/A
BRIDGE PICKUP DD103B
FINISHES BLK, MBS
(TR, TB)

KE3R

KE3



DK1

BODY Poplar or (Poplar/Maple)
NECK Maple/Bolt-on
FINGERBOARD Bound Ebony
SCALE 25.5 in./22 Fret
BRIDGE Floyd Rose Orig.
NECK PICKUP Duncan STK-1
MIDDLE PICKUP Duncan STK-1
BRIDGE PICKUP Duncan TB-4
FINISHES BLK, DCR, BGP,
(TBK, BB, PB, TSB)

ONE OF THE MOST VISIBLE AND WIDELY COPIED GUITARS IN THE BUSINESS FOR YEARS, THE DINKY HAS FIRMLY ESTABLISHED ITSELF AS A TRUE CLASSIC AMONG A GENERATION OF PLAYERS. THE USA MADE DK1 FEATURES A 22 FRET BOLT ON NECK, BOUND EBONY FINGERBOARD, THE DEFINITIVE JACKSON SHARKFIN INLAY, DUNCAN PICKUPS AND AN ORIGINAL FLOYD ROSE MANUFACTURED BY SCHALLER. IF PRICE IS MORE OF AN ISSUE, THE SAME BASIC FEATURES ARE OFFERED ON THE DK2 WHICH COMES STANDARD WITH A ROSEWOOD FINGERBOARD WITH SHARKFIN INLAY, DUNCAN DESIGN PICKUPS AND THE JT580LP TREMOLO. THE DK2 FEATURES FLAME MAPLE VENEER TOPS FOR TRANSPARENT FINISHES.

Jacksonguitar.ru

THE DINKY REVERSES' distinctive, definitive LOOK MAKE IT THE MOST POPULAR OF ALL THE JACKSON MODELS.. WHETHER THE FULLY BLOWN USA VERSION DR2 EQUIPPED EBONY FINGERBOARD AND DUNCANS IS YOUR BAG, OR THE MORE AFFORDABLE DR3 WITH SHARKFIN INLAY, AND DUNCAN DESIGN HUMBUCKERS, THE DINKY REVERSE IS WHAT YOU NEED TO TAKE IT TO THE EDGE.

DK2

BODY Poplar (Maple veneer)
NECK Maple/Bolt-on
FINGERBOARD Rosewood / Sharkfin inlay
SCALE 25.5 in./24 Fret
BRIDGE JT-580LP
NECK PICKUP Duncan Design SC101
MIDDLE PICKUP Duncan Design SC101
BRIDGE PICKUP Duncan Design DD102B
FINISHES MBS, DMV (TR, TB, TA)

DR2

BODY Poplar
NECK Maple/Bolt-on
FINGERBOARD Ebony
SCALE 25.5 in./22 Fret
BRIDGE JT-580LP
NECK PICKUP Duncan SH-2
BRIDGE PICKUP Duncan SH-12
FINISHES BLK, UVB, DCR

DR3

BODY Poplar (flame Maple veneer or Mahogany / TSB only)
NECK Maple/Bolt-on
FINGERBOARD Rosewood / Sharkfin inlay
SCALE 25.5 in./24 Fret
BRIDGE JT-580LP
NECK PICKUP Duncan Design DD103N
BRIDGE PICKUP Duncan Design DD103B
FINISHES BLK, (TR, TB, TG) TSB / mahogany



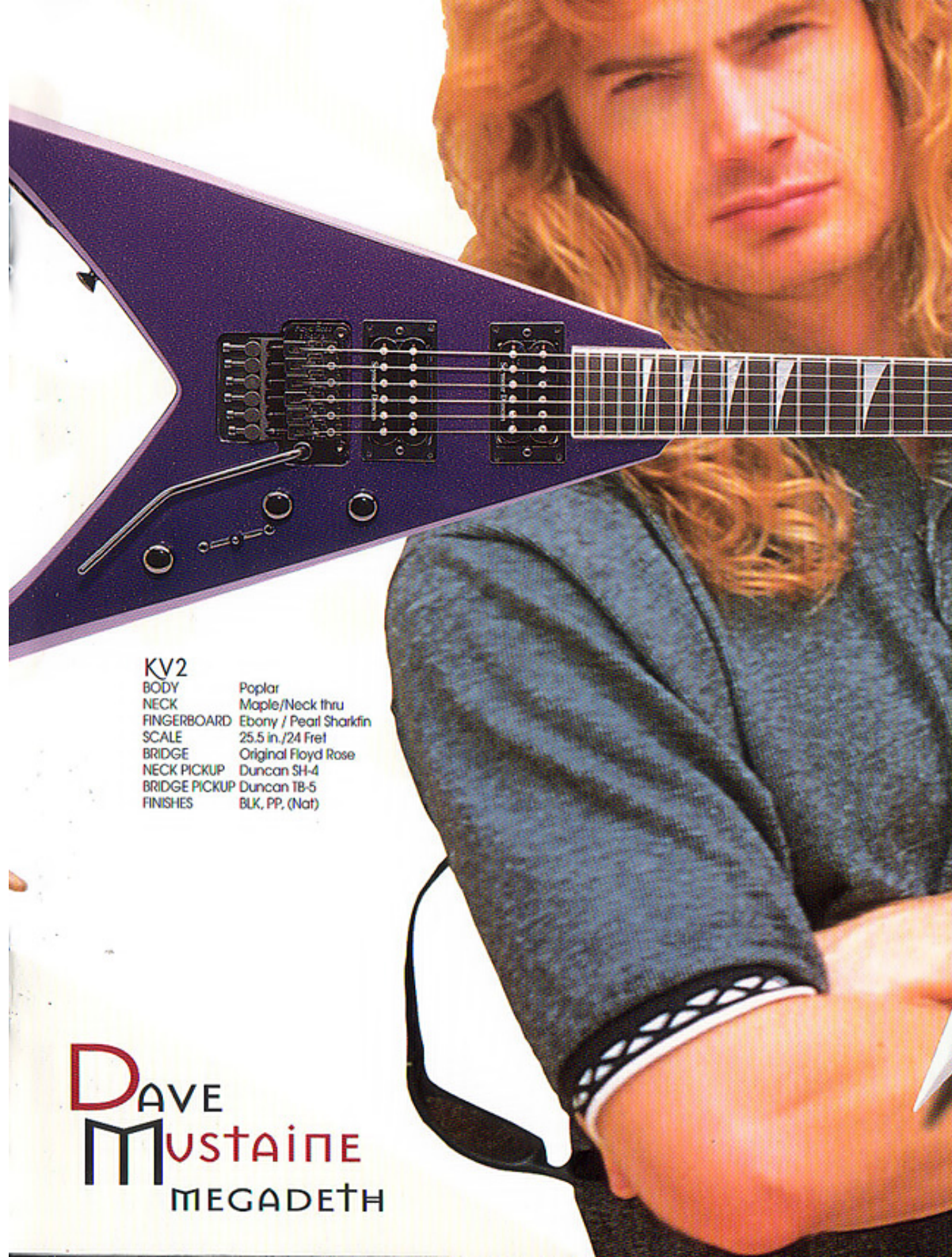
JOEY Z
LIFE OF AGONY

KING V

KV1

BODY	Poplar
NECK	Maple/Neck thru
FINGERBOARD	Ebony / Pearl Sharkfin
SCALE	25.5 in./24 Fret
BRIDGE	Kahler APM3310
NECK PICKUP	Duncan SH-4
BRIDGE PICKUP	Duncan TB-5
FINISHES	BLK, PP, (Nat)

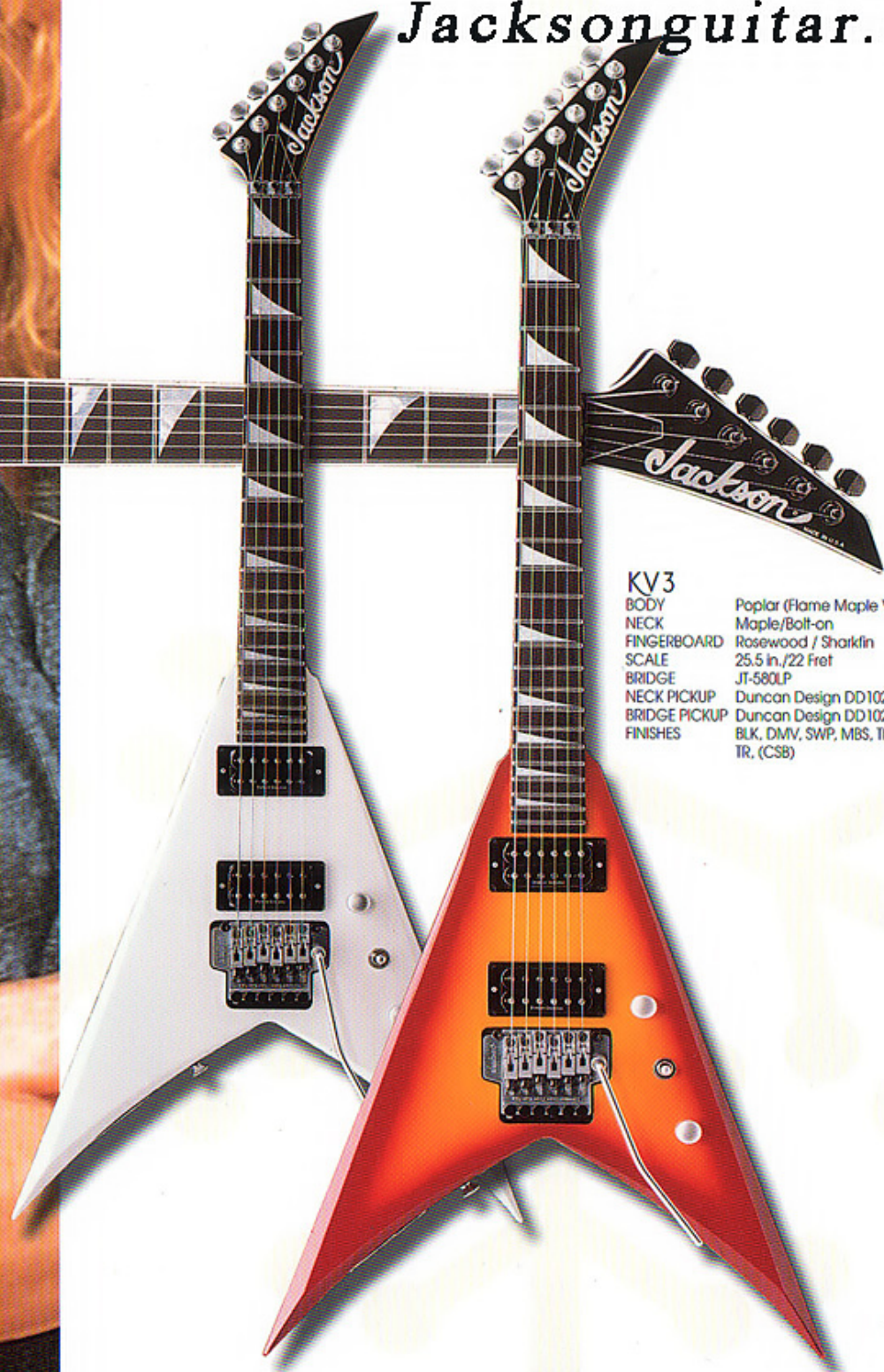
DAVE MUSTAINE IS THE DELIBERATE TYPE. THERE IS NOTHING BASHFUL ABOUT HIM OR HIS MUSIC. HIS GUITAR? THE KING V MODEL KV-1. IT'S NOT NECESSARILY PRETTY, BUT LIKE IT OR NOT, IT IS UNMISTAKABLY JACKSON. THE KV1'S NECK THROUGH BODY CONSTRUCTION AND DUAL DUNCAN HUMBUCKERS CREATE THE ENORMOUS SOUND, AND THE 24 FRET NECK WITH BOUND EBONY FINGERBOARD, THE INCREDIBLE FEEL. THE KV2 IS ESSENTIALLY THE SAME MODEL OFFERED WITH A FLOYD ROSE TREMOLO INSTEAD OF THE FIXED BRIDGE. NO LESS OUTSPOKEN IS THE BOLT ON KE3 OR KE3 REVERSE, BOTH AVAILABLE WITH SHARKFIN INLAY, DUNCAN DESIGN PICKUPS, AND JT580LP TREMOLO.



KV2

BODY Poplar
NECK Maple/Neck thru
FINGERBOARD Ebony / Pearl Sharkfin
SCALE 25.5 in./24 Fret
BRIDGE Original Floyd Rose
NECK PICKUP Duncan SH-4
BRIDGE PICKUP Duncan TB-5
FINISHES BLK, PP, (Nat)

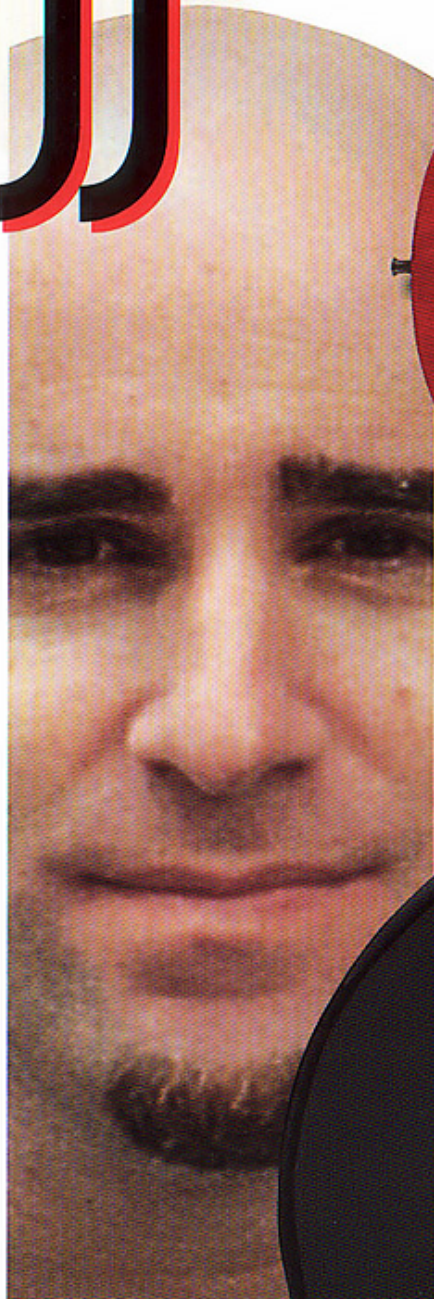
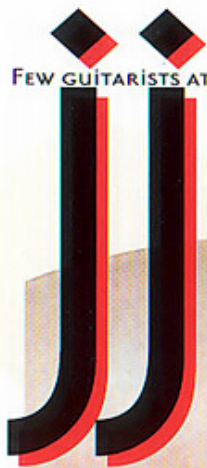
DAVE
MUSTAINE
MEGADETH



KV3

BODY Poplar (Flame Maple Veneer)
NECK Maple/Bolt-on
FINGERBOARD Rosewood / Sharkfin
SCALE 25.5 in./22 Fret
BRIDGE JT-580LP
NECK PICKUP Duncan Design DD102N
BRIDGE PICKUP Duncan Design DD102B
FINISHES BLK, DMV, SWP, MBS, TB, TR, (CSB)

FEW GUITARISTS ATTACK THE INSTRUMENT WITH THE FEROCITY OF SCOTT IAN. HIS BRUTAL RIGHT HANDED TECHNIQUE REQUIRES A GUITAR THAT WON'T COLLAPSE UNDER THE PRESSURE AND AT THE SAME TIME IS ABLE TO PROVIDE THE CLARITY, ARTICULATION AND EVEN SWEETNESS REQUIRED. THE **J** IS THE TICKET. DESIGNED IN CONJUNCTION WITH SCOTT, IT IS OFFERED IN EITHER POPLAR OR KORINA (NATURAL FINISH AND TRANS RED), AND WITH A 22 FRET / 24.75" SCALE NECK. THE **J** COMES LOADED WITH PERFECTLY MATCHED DUPCAN JB AND JAZZ HUMBUCKERS AND THE WILKINSON GTB100 STOP TAILPIECE. FOR LOOKS, THE **J** DELIVERS THE SAME DEFINITIVE PUNCH. THE "EXTORTION" STYLE LOGO, DICE INLAY, AND SCOTT'S OWN LIKENESS GIVE THE **J** A PERSONALITY ALL IT'S OWN.



Jacksonguitar.ru



|||

BODY	Korina
NECK	Maple/Bolt-on
FINGERBOARD	Rosewood
SCALE	25.5 in./22 Fret
BRIDGE	Wilkinson GTB-100
NECK PICKUP	Duncan SH-2
MIDDLE PICKUP	N/A
BRIDGE PICKUP	Duncan SH-4
FINISHES	BLK, SS, TSB, NAT (Optional Flames graphics)



SCOTTIAM



PC

STRIKINGLY BEAUTIFUL QUILT MAPLE ON BOTH THE BODY AND THE FINGERBOARD GIVE THIS INSTRUMENT IT'S IMMEDIATELY RECOGNIZABLE APPEARANCE, AND THE FLOYD ROSE SUSTAINER, IT'S REMARKABLE SOUND. THE SUSTAINER ALLOWS THE PLAYER TOTAL CONTROL OVER BOTH THE FUNDAMENTAL AND HARMONIC SUSTAIN AT ANY VOLUME. DIMARZIO SUPER 3 AND HS2 PICKUPS SUPPLY THE PUNCH AND AN ORIGINAL FLOYD ROSE TREMOLO ROUNDS OUT THE PACKAGE. THE PC3 OFFERS THE SAME BASIC APPEARANCE ONLY AS A MORE AFFORDABLE NON-SUSTAINER MODEL. AS AN ALTERNATIVE TO THE DOUBLE-LOCKING VERSION, IT COMES WITH WILKINSON VS-50 TREMOLO AND IS EQUIPPED WITH DUNCAN DESIGN PICKUPS.

PHIL COLLETT



PCI

BODY Mahogany w/Guill Maple
NECK Quartersawn Maple/Bolt-on
FINGERBOARD Guill Maple
SCALE 25.5in./24 Fret
BRIDGE Floyd Rose Original
NECK PICKUP Floyd Rose Sustainer
MIDDLE PICKUP DiMarzio HS-2
BRIDGE PICKUP DiMarzio Super 3
FINISHES Solar, Au Natural, Chlorine, Euphoria, Mocha

PC3

BODY Mahogany w/Guill Maple veneer
NECK Maple/Bolt-on
FINGERBOARD Guill Maple
SCALE 25.5in./24 Fret
BRIDGE Wilkinson VS50
NECK PICKUP Duncan Design SC101
MIDDLE PICKUP Duncan Design SC101
BRIDGE PICKUP Duncan Design DD103B
FINISHES TR, TA, TG



SURFCASTER

SURCASTER_SCI

BODY	Mahogany, (Ash)
NECK	Maple/Bolt-on
FINGERBOARD	Rosewood or Maple / Sharkfin
SCALE	25.5in./24 Fret
BRIDGE	GTB100
NECK PICKUP	Armstrong SLV-1CR
BRIDGE PICKUP	Duncan Design HB103B
FINISHES	TR, TL, TO, TBK



Tomi

MARTIN / MADONNA / MICHAEL JACKSON

BASSES

KELLY BASS KB-1

BODY Poplar
NECK Maple/Bolt-on
FINGERBOARD Rosewood
SCALE 34in./22 Fret
BRIDGE JB340
MIDDLE PICKUP Duncan Design PB102
BRIDGE PICKUP Duncan Design JB102B
FINISHES BLK, MBS



JM6

BODY Poplar
NECK Maple/Bolt-on
FINGERBOARD Rosewood
SCALE 34in./21 Fret
BRIDGE JB340
BRIDGE PICKUP Armstrong MM-1
FINISHES RR, RG, BLK



JM6 PJ

BODY Poplar
NECK Maple/Bolt-on
FINGERBOARD Rosewood
SCALE 34in./21 Fret
BRIDGE JB340
MIDDLE PICKUP Duncan Design PB102
BRIDGE PICKUP Duncan Design PJ102B
FINISHES RR, RG, BLK

THE MOTHER OF ALL BASSES IS THE JJ WITH DUNCAN BASSLINES PICKUP AND STC3M4 TONE CIRCUIT WITH SLAP SWITCH. SHOWN IN INTERFERENCE FLAMES WHICH DRAMATICALLY CHANGE COLORS AS GUITAR IS SHIFTED.

JJ Bass

BODY Poplar
NECK Maple/Bolt-on
FINGERBOARD Rosewood
SCALE 30in./19 Fret
BRIDGE Hipshot
BRIDGE PICKUP Duncan STC-3M4
FINISHES BLK, Interference Flames (optional)

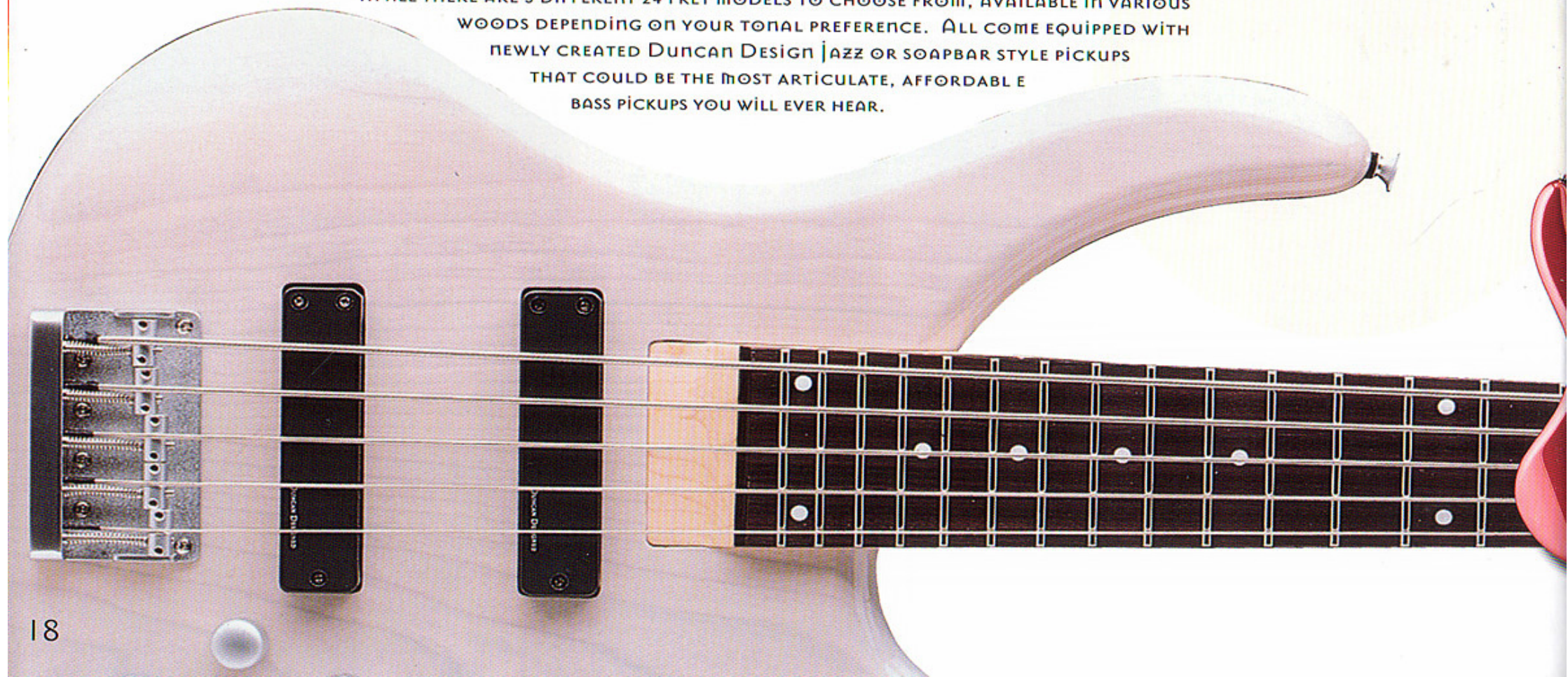


THE JM6 IS THE QUINTESSENTIAL JACKSON HYBRID. FITTED WITH A SINGLE ARMSTRONG MM-1, THIS IS ONE MONSTROUS SOUNDING BASS AT A PRICE EVEN A MOTHER WOULD LOVE. THE JM6PJ IS EQUIPPED WITH DUNCAN DESIGN PJ STYLE CERAMIC PICKUPS.

CONCERT BASSES

IN DESIGNING THE NEW CONCERT SERIES BASSES, WE HAD THREE MAIN OBJECTIVES; TO CREATE INSTRUMENTS THAT WERE TIMELESS IN APPEARANCE, SUPERIOR IN QUALITY AND ACCESSIBLY PRICED. WE THINK WE'VE SUCCEEDED ON ALL FRONTS. THE FACT IS, PICTURES IN A CATALOG ARE NICE, BUT YOU REALLY HAVE TO PLAY ONE OF THESE TO GET THE FULL IMPACT OF JUST HOW GOOD THEY REALLY ARE.

IN ALL THERE ARE 5 DIFFERENT 24 FRET MODELS TO CHOOSE FROM, AVAILABLE IN VARIOUS WOODS DEPENDING ON YOUR TONAL PREFERENCE. ALL COME EQUIPPED WITH NEWLY CREATED DUNCAN DESIGN JAZZ OR SOAPBAR STYLE PICKUPS THAT COULD BE THE MOST ARTICULATE, AFFORDABLE BASS PICKUPS YOU WILL EVER HEAR.



CONCERT BASS C4-P / C4-J ALNICO*

BODY	Poplar
NECK	Maple/Bolt-on
FINGERBOARD	Rosewood
SCALE	34in./24 Fret
BRIDGE	JB340
MIDDLE PICKUP	Duncan Design JB-103N
BRIDGE PICKUP	Duncan Design JB-103B
FINISHES	BLK, DMR, DCB
* C4-J	
MIDDLE PICKUP	Duncan Design JB104N Alnico
BRIDGE PICKUP	Duncan Design JB104B Alnico
FINISHES	BLK, DMR, DCB, (TSB / Mahogany)

CONCERT BASS C4-A

BODY	Poplar, Mahogany, Ash
NECK	Maple/Bolt-on
FINGERBOARD	Rosewood
SCALE	34in./24 Fret
BRIDGE	JB340
MIDDLE PICKUP	Duncan Design SB101
BRIDGE PICKUP	Duncan Design SB101
PREAMP	Armstrong PAB-20
FINISHES	BLK, DCB, (TSB / Mahogany) (TR/Ash)

CONCERT BASS C5-P

BODY	Poplar
NECK	Maple/Bolt-on
FINGERBOARD	Rosewood
SCALE	34in./24 Fret
BRIDGE	JB350
MIDDLE PICKUP	Duncan Design SB101
BRIDGE PICKUP	Duncan Design SB101
FINISHES	BLK, DCB, DMR

CONCERT BASS C5-A

BODY	Poplar, Mahogany, Ash
NECK	Maple/Bolt-on
FINGERBOARD	Rosewood
SCALE	34in./24 Fret
BRIDGE	JB350
MIDDLE PICKUP	Duncan Design SB101
BRIDGE PICKUP	Duncan Design SB101
PREAMP	Armstrong PAB-20
FINISHES	BLK, DCB, (TSB / Mah) (TR, TI / Ash)



PERFORMER



PS 1



PS 3+

PS 3

Jacksonguitar.ru

SERIES

COMBINE THE TRADEMARK LOOK AND FEEL OF A JACKSON WITH UNBELIEVABLE QUALITY AND PRICE AND YOU COME UP WITH THE PERFORMER SERIES. WITH 8 DIFFERENT MODELS AVAILABLE IN 9 DIFFERENT FINISHES, YOU WOULD BE HARD PRESSED TO FIND A BETTER INSTRUMENT ANYWHERE FOR THE MONEY. WE HATE TO BRAG, BUT IF YOU ARE IN THE MARKET FOR AFFORDABLY PRICED INSTRUMENT YOU SHOULD DO YOURSELF A FAVOR AND CHECK ONE OUT. INSPECT THE FEATURES. THE FINISH, THE FINGERBOARD, THE FRETS, THEY ARE ALL OF THE CALIBUR YOU WOULD EXPECT TO SEE ON GUITARS COSTING SEVERAL HUNDRED DOLLARS MORE. NOW FOR A REALITY CHECK. TYPICALLY GUITARS AT THESE PRICES ARE MANUFACTURED BY FACTORIES THAT BUILD INSTRUMENTS FOR SEVERAL DIFFERENT COMPANIES AT THE SAME TIME. THAT'S RIGHT. NOT WITH JACKSON. OUR FACTORY BUILDS ONLY JACKSON GUITARS. THAT IS WHY WE HAVE THE ADVANTAGE AND IT SHOWS IN THE CONSISTENCY OF QUALITY.



PS 7

PS 4

PS 5

PS 2

PS 6t

PS1

BODY STYLE Dinky
BODY Alder
NECK Maple
FINGERBOARD Rosewood
SCALE 25.5 in./22 Fret
BRIDGE JT-480 Fulcrum
NECK PICKUP J135
MIDDLE PICKUP J135
BRIDGE PICKUP J70
FINISHES BLK, DMB, RVM, DMG, BC

PS2

BODY STYLE Dinky
BODY Alder
NECK Maple
FINGERBOARD Rosewood
SCALE 25.5 in./24 Fret
BRIDGE JT-580 Double Locking
NECK PICKUP J135
MIDDLE PICKUP J135
BRIDGE PICKUP J70
FINISHES BLK, DMB, RVM, DMG, BC

PS3

BODY STYLE Rhoads
BODY Poplar
NECK Maple
FINGERBOARD Rosewood
SCALE 25.5 in./22 Fret
BRIDGE JT-390
NECK PICKUP J170
MIDDLE PICKUP N/A
BRIDGE PICKUP J70
FINISHES BLK, DMB, RVM, DMG, BC



THE JACKSON STUDENT SERIES GUITARS ARE PROBABLY THE BEST MADE GUITARS IN THE WORLD FOR THE MONEY. O.K. WE'VE SAID IT. BUT DON'T TAKE OUR WORD FOR IT. PICK ONE UP AND INSPECT IT FOR YOURSELF. THE OVERALL WORKMANSHIP COMPLETELY SMOKES THE COMPETITION. THE JS20 AND JS40 BASS BOTH POSSESS ALL THE HEART AND SOUL OF THE MORE EXPENSIVE JACKSONS. WHY DID WE GO TO SO MUCH TROUBLE ON SUCH INEXPENSIVE GUITARS? WE WANTED TO MAKE SURE THAT WHEN YOU PLAYED YOUR FIRST JACKSON THAT YOU WOULD BE HOOKED FOR LIFE.



js20

BODY Alder
NECK Maple
FINGERBOARD Rosewood
SCALE 25.5 in./22 Fret
BRIDGE SG23 Fulcrum
PICKUPS (N)J14, (M) J14, (B) JE10
FINISHES BLK, MB, MTR



js40

BODY Alder
NECK Maple
FINGERBOARD Rosewood
BRIDGE SG23 Fulcrum
PICKUPS (Neck)JN100,
(Bridge) JB100
FINISHES BLK, MB, MTR

PS3t

Rhoads
Poplar
Maple
Rosewood
25.5 in./22 Fret
JT-500 Double Locking
J170
N/A
J70
BLK, DMB, RVM, DMG, BC

PS4

Dinky Reverse
Alder
Maple
Rosewood
25.5 in./24 Fret
JT-500 Double Locking
J170
J-135
J70
BLK, DMB, RVM, DMG, BC

PS5

Concert Bass
Alder
Maple
Rosewood
22 Frets
JT-340
N/A
J35P
J165
BLK, DMB, RVM, DMG, BC

PS6t

Kelly
Poplar
Maple
Rosewood
25.5 in./22 Fret
JT-500 Double Locking
J170
N/A
J70
BLK, DMB, RVM, DMG, BC

PS7

Dinky
Alder
Maple
Rosewood
25.5 in./22 Fret
Wilkinson VS50
J135
J135
J70
BLK, DMB, RVM, DMG, BC



Jacksonguitar.ru

CC



S T

O

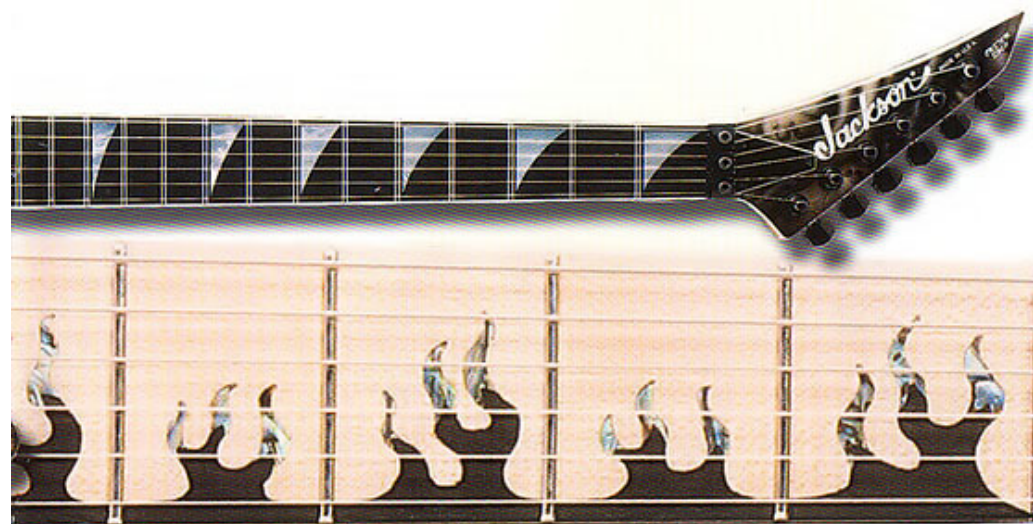
M

I

L

E

A KID IN A CANDY STORE. THAT'S WHAT IT'S LIKE WHEN YOU ORDER A GUITAR FROM THE JACKSON CUSTOM SHOP. THAT'S BECAUSE YOU KNOW THAT THE POSSIBILITIES ARE LIMITLESS. THE OLDEST OPERATING FACILITY OF ITS KIND, OUR CUSTOM SHOP IS TRULY WHAT IT CLAIMS TO BE. THAT DOESN'T MEAN SIMPLY A FANCY PAINT JOB OR A NICE PIECE OF WOOD, IT MEANS VIRTUALLY ANYTHING YOU CAN DREAM UP. THE FOLLOWING PAGES SHOW ONLY A FEW OF THE GUITARS TO GO THROUGH THE FACTORY THIS YEAR.





TOP



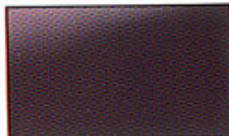
LEFT: ROSWELL RHODES SHOWN IN INTERFERENCE FINISH, WHICH DRAMATICALLY SHIFTS IN COLOR DEPENDING ON THE ANGLE FROM WHICH IT IS VIEWED.

COLORS FINISHES

Jackson
guitars



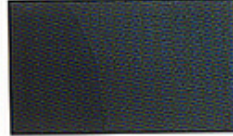
BB BLUE BURST



BC BLACK CHERRY



BCSB BURNT CHERRY
SUNBURST



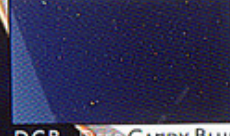
BGP BLUE GREEN
PEARL



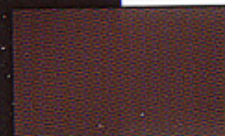
BLK BLACK



CSB CHERRY SUNBURST



DCB DEEP CANDY BLUE



DCR DEEP CANDY RED



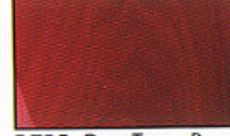
DMG DARK METALLIC
GREEN



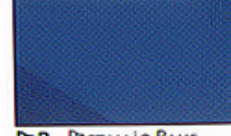
DMR DARK METALLIC
RED



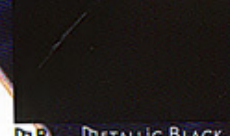
DMV DEEP METALLIC
VIOLET



DTRB DEEP TRANS RED



MB METALLIC BLUE



MB METALLIC BLACK



MBS MIDNIGHT BLUE
SPARKLE



MR METALLIC RED



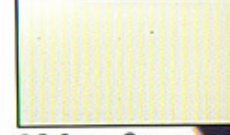
NAT NATURAL



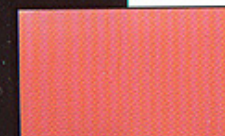
PB PURPLE BURST



PP PURPLE PAVO



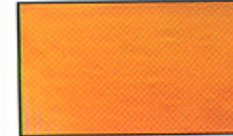
RG RETRO GREEN



RR RETRO RED



RVM RED VIOLET
METALLIC



TA TRANS AMBER



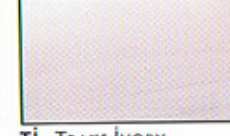
TB TRANS BLUE



TBK TRANS BLACK



TG TRANS GREEN



TI TRANS IVORY



TP TRANS PURPLE



TR TRANS RED



TBS TOBACCO SUNBURST

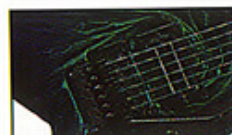


UV ULTRA VIOLET

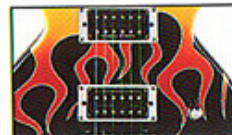


CBL COBALT BLUE

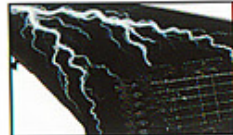
OPTIONAL GRAPHICS



EDS EERIE DESS



HRF HOT ROD FLAMES

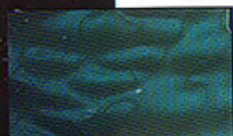


LTG LIGHTNING SKY



SKL SKULLS

AVAILABLE FOR PCI ONLY



CHL CHLORINE



EUP EUPHORIA



NAT Au NATURAL



MOC MOCHA

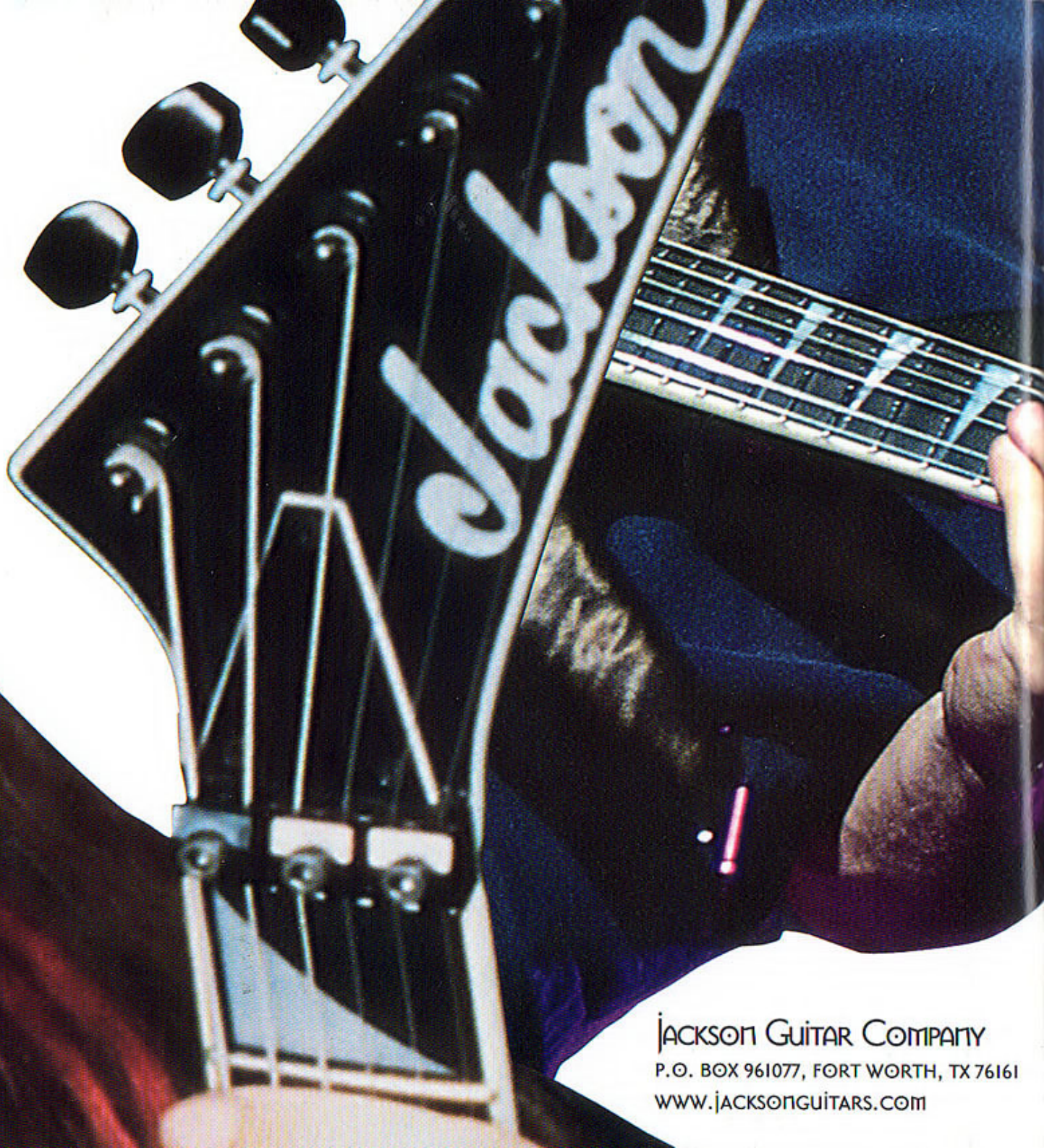


SOL SOLAR

PHOTO CREDITS: Photos of Dave Mustaine, Marty Friedman, Scott Ian & Joey Z by Gene Kirkland • Photo of Flavia by Richard Morava • Photo of Phil Collen by Ross Halfin/Idols • Photo of Tomi Martin by Lisa Pearl

Due to the limitations of the printing process, these color samples may not be an exact match to actual guitar finishes. Specifications subject to change. © Copyright 1998, Jackson Guitar Company. All rights reserved.

\$5.00



JACKSON GUITAR COMPANY
P.O. BOX 961077, FORT WORTH, TX 76161
WWW.JACKSONGUITARS.COM