

Exploring Creation with Biology, 3rd Edition – Errata File

This file contains the corrections for the 3rd (March 2021) Printing, of the **Student Notebook**. The printing for the Textbook and Solutions and Tests Manual may not be the same as the Student Notebook. Corrections for the Textbook and Solutions and Tests Manual are in separate files. (Updated 8/19/2022)

Clarification:

Page 489 – In the list of materials for EXP 13.1, after Prepared slide: sponge, add "- Grantia spicules"

Corrections:

Page 28 – Term h. should be Scientific theory

Page 228 – Module 10 Study Guide #15 – Change microscopic to macroscopic

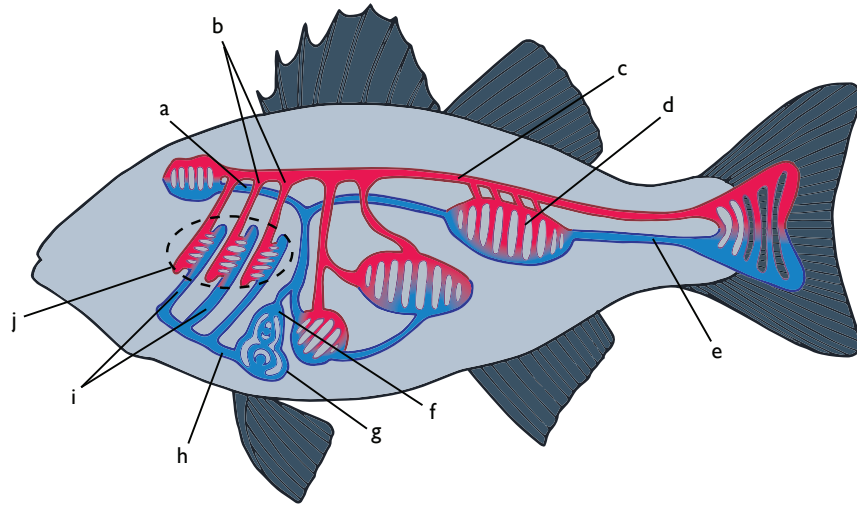
Page 334 – #17 In the fish diagram, the line for "a." should point to Blue blood. See attached diagram at the end of this file.

Page 409 – Procedure 3, b, ii – add ‘yeast’ after ½ teaspoon

Page 410 – Procedure 3, c, ii – add ‘yeast’ after ½ teaspoon

17

Identify the structures in the figure below and indicate which are veins, which are arteries, and which are neither.



STRUCTURE		STRUCTURE	
a.		f.	
b.		g.	
c.		h.	
d.		i.	
e.		j.	