

CANDIDATE'S NAME _____

Centre Number	Candidate Number										

EXAMINATIONS COUNCIL OF ZAMBIA

Joint Examination for the School Certificate
and General Certificate of Education Ordinary Level

MUSIC

6020/2

PAPER 2 HARMONY

Friday

31 OCTOBER 2014

TIME: 2 hours 30 minutes

INSTRUCTIONS TO CANDIDATES

Write your name, centre number and candidate number in the spaces at the top of this page.

There are **five (5)** questions in this paper. Answer **all** questions.

Write your answers in the spaces provided on the question paper.

INFORMATION FOR CANDIDATES

The number of marks is given in brackets [] at the end of each question or part question.

Cell phones are not allowed in the examination room.

FOR EXAMINER'S USE	
1	
2	
3	
4	
5	
TOTAL	

Question 1 **COMPOSITION**

Continue this opening to make a melody of not fewer than eight bars and not more than twelve bars. Add suitable phrases and expression marks.

[20]

The image shows a musical staff with a treble clef and a key signature of one flat (B-flat). The first staff contains a melody of eight notes: B-flat, A, G, F, E, D, C, and B-flat. The melody is written in a simple, stepwise fashion. Below the first staff are ten empty staves, each consisting of five lines, for the student to continue the melody. The staves are arranged in five groups of two lines each.

QUESTION 2

On the blank staff below, write out the following for violin, viola, cello and contrabass. [20]

The image shows a musical score for a piano and string ensemble. The piano part is written for 4 measures. The string parts (Violin I, Viola, Cello, Contrabass) are blank staves for the same 4 measures.

Piano

Violin I

Viola

Cello

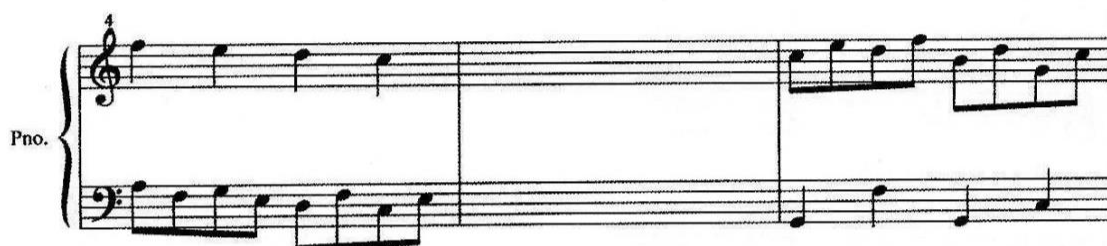
Contrabass

QUESTION 3

TWO PART

Complete the following two-part extract.

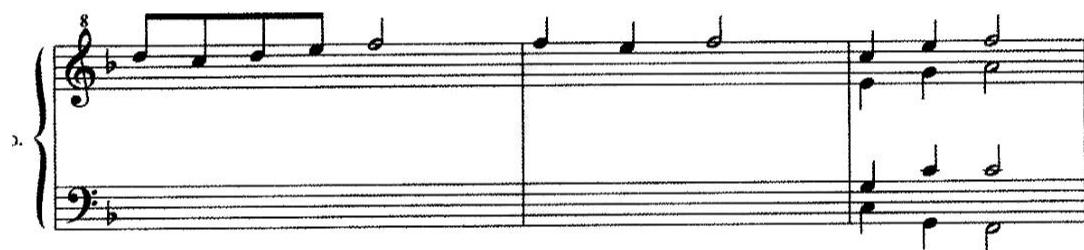
[20]



Question 4

Add the missing parts to make the following four-part (SATB) extract complete.

[20]



Question 5

This passage is a piano extract from Frederick Loewe's 'My Fair Lady' arranged for voice and piano. Look at it and then answer questions on page 7.

[20]

WOULDN'T IT BE LOVELY

from the Musical play
'MY FAIR LADY'

Words by
ALAN JAY LERNER

Music by
FREDERICK LOEWE

Tempo di Schottische (gracefully)


Piano



Pno.



Pno.




(a) (i) Give the meaning of:

Tempi di schottische [2]

Delicato [2]

mf [2]

 [2]

(ii) Name the ornament in bar 7 [2]

(b) What does the cross on the staff below mean?



(c) Draw the right hand motif of this piano music [2]

(d) Name the bar with consecutive descending chromatic movement in three notes

..... [2]

(e) Name the chords and their positions in the following bars:

(i) Bar 1 and chord 4 [3]

(ii) Bar 13 chord 3 [3]