

Timeline

R1b Haplogroup Backbone and Early Branching Timeline

MRCA = Most Recent Common Ancestor
Last individual ancestor who had all SNPs in a branch's phylogenetic equivalent block but none of the SNPs from his descendant branches

Backbone = the line of SNPs marking the main branch (trunk) of the tree from the formation of R1b-M343 down to the large European subclades of R1b-L151

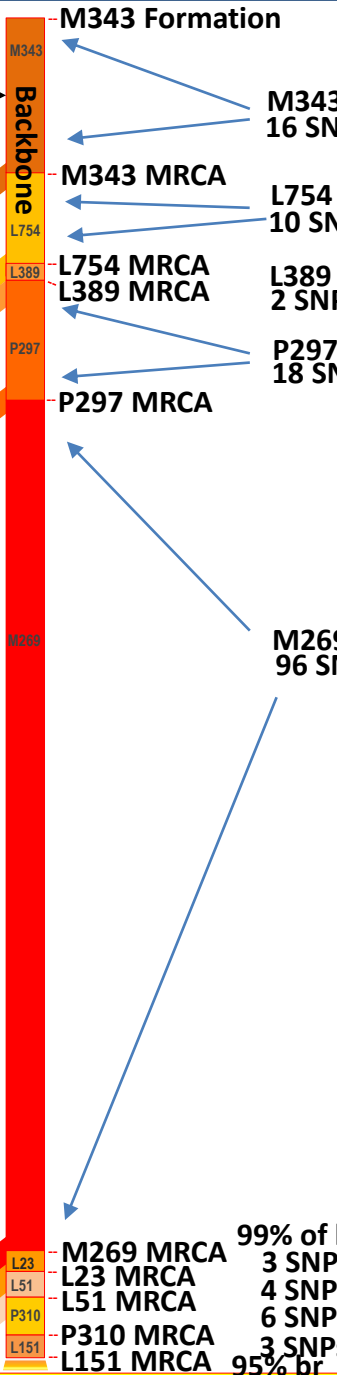
Early Branches = lineages branching from the main branch (trunk) prior to R1b-L151



Images from: bellbeakerblogger, John Clarke Online, sciencemag.org

R1b-L151 Subclades (95% of all branching within R1b)

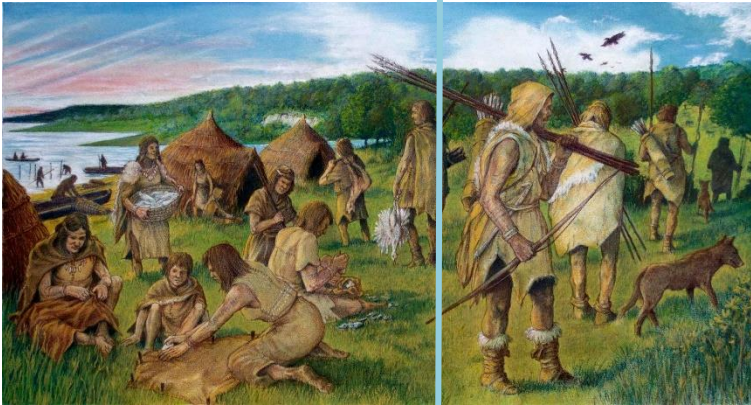
3 SNPs
3% br
PF7562
Z2103
PF7589



Paleolithic (Old Stone Age)

Last Glacial Maxim

Mesolithic (Middle Stone Age)



Neolithic (farming)

Bronze Age

L151>P312 2 SNPs 71% of branches in R1b

L151>U106 1 SNP 23% br S1194 A8053 1 SNP 2 SNPs