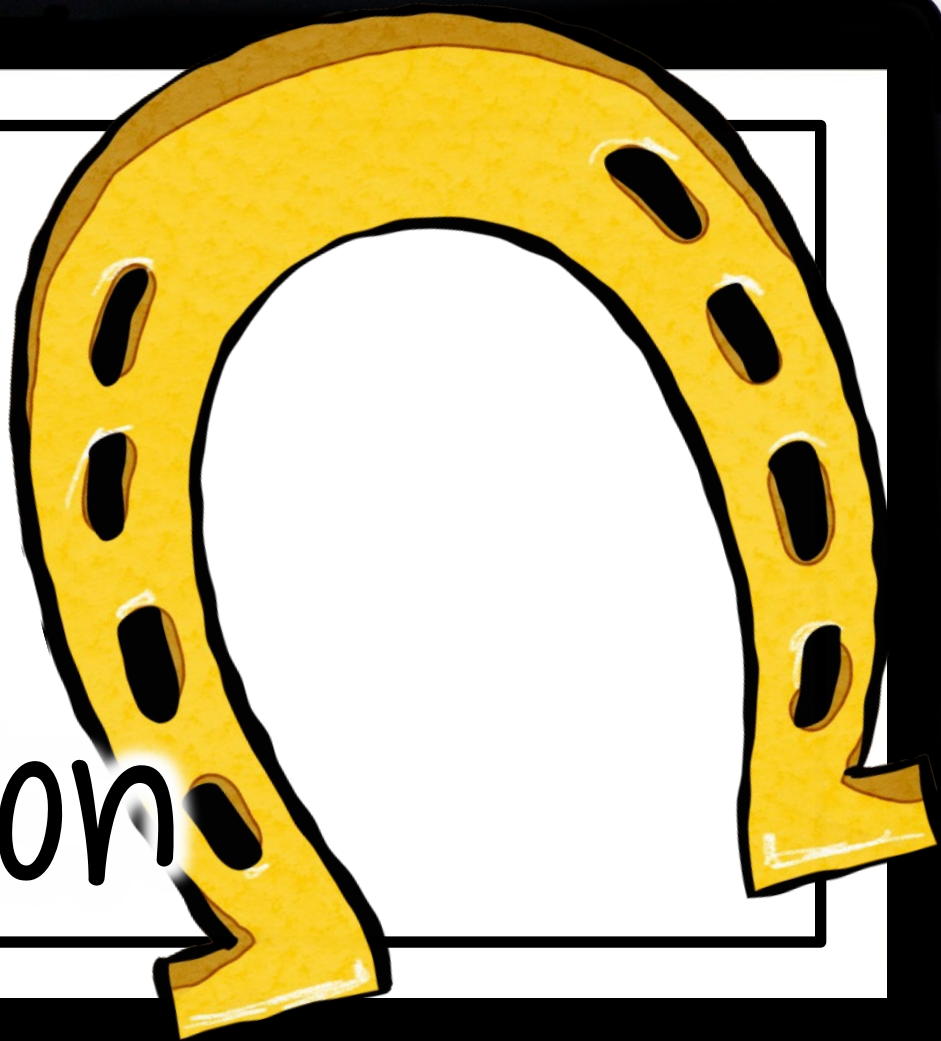
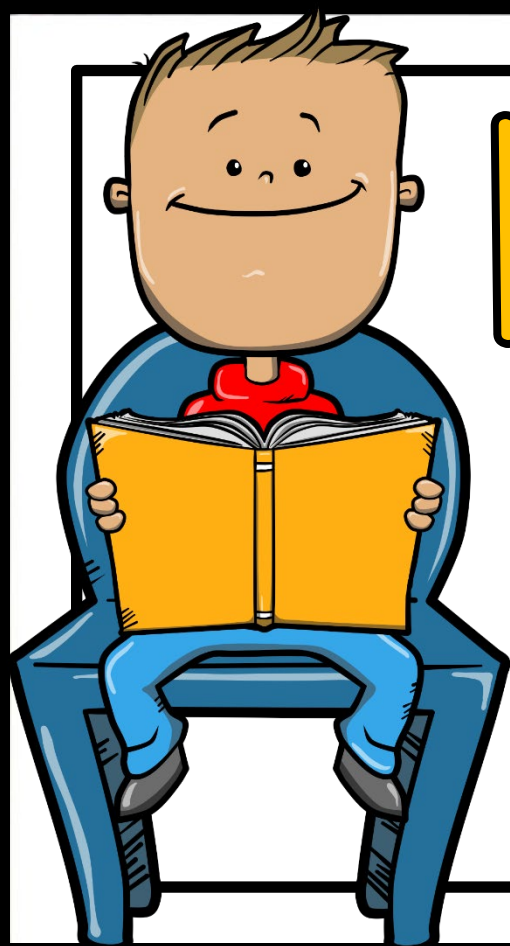


Ready
Set
Show
Subtraction

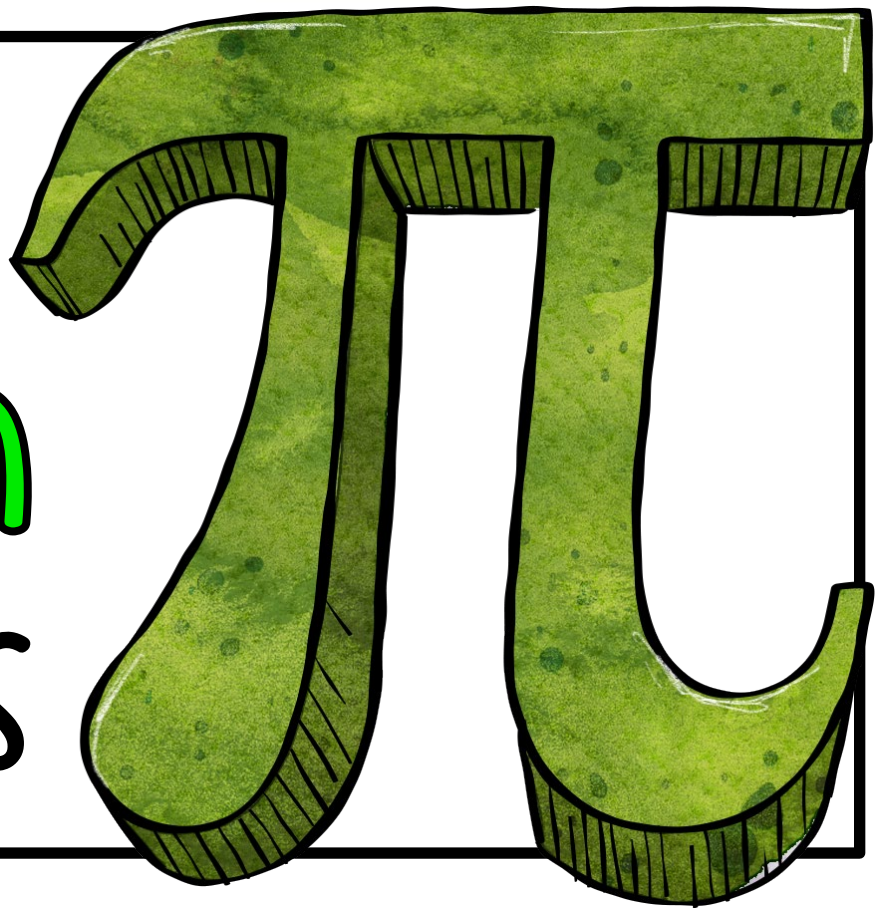




Interactive Math Fact Practice



with
March
themes



Every problem comes with a
Ready, Set, Show
& Answer slide

Ready

$$9 - 6 = \text{🌈}$$

Set

$$9 - 6 = \text{🌈}$$

Show

$$9 - 6 = \text{🌈}$$

Answer

3

Introduction slides with editable text boxes

When you see the word
READY

get ready to listen and read
the problem. You can get
your white board and
marker ready. This is your
signal to erase your board
if needed.

© wanttobesuperteacher.com

When you see the word
SET

you can start working
out the problem and
showing your answer on
your white board.

© wanttobesuperteacher.com



When your
answer is
ready, put the
white board
under your
chin with
your writing
facing you.

© wanttobesuperteacher.com

When you see the word
SHOW

hold up your white board
and show off your
answer. Make sure your
teacher can see it.

© wanttobesuperteacher.com

Practice question with step-by-step instructions

**Let's
Practice!**

Ready

Erase your board if
needed and read the
question.

$$5 - 3 =$$



Set

Now work out the problem on
your white board. When you
have your answer ready, put
the white board under your
chin with your work facing you.

$$5 - 3 =$$



Show

Show off your answer!
Hold up the white board so
your teacher can see your
work. Don't worry if it's
wrong. Mistakes are proof
that you are trying!

$$5 - 3 =$$



Answer

2

210 Subtraction Fact Problems + 20 Challenges

Ready

$$2 - 1 = \text{girl reading}$$

Set

$$7 - 5 = \text{horseshoe}$$

Show

$$6 - 3 = \pi$$

Ready

$$11 - 9 = \text{pie}$$

Set

$$19 - 10 = \text{circle diagram}$$

Show

$$14 - 11 = \text{pot of gold}$$

Ready

$$9 - \pi = 6$$

Set

$$12 - \text{book} = \text{book}$$

Show

$$14 - 6 = \text{leprechaun hat} - 10$$

Every subtraction equation
with a minuend of 1-20
is included

Ready

$$1 - 1 =$$



Show

$$20 - 20 =$$



54 subtraction problems with a minuend of 1-10

Ready

$$4 - 3 = \text{horseshoe}$$

Set

$$9 - 8 = \text{pi coin}$$

Show

$$7 - 2 = \text{slice of pie}$$

Ready

$$2 - 2 = \text{clover}$$

Set

$$5 - 5 = \text{pot of gold}$$

Show

$$10 - 3 = \text{book}$$

Ready

$$9 - 2 = \text{boy reading}$$

Set

$$8 - 6 = \text{rainbow}$$

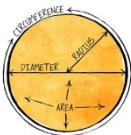
Show

$$8 - 1 = \text{horseshoe}$$

90 problems with a 2-digit minuend & 1-digit subtrahend

Ready

$$11 - 6 =$$



Set

$$16 - 3 =$$



Show

$$15 - 8 =$$



Ready

$$13 - 1 = \pi$$



Set

$$14 - 4 =$$



Show

$$18 - 9 =$$



Ready

$$20 - 8 =$$



Set

$$17 - 6 =$$



Show

$$12 - 3 =$$



65 problems with a 2-digit minuend & 2-digit subtrahend

Ready

$$20 - 12 = \text{☘}$$

Set

$$19 - 13 = \text{👧}$$

Show

$$16 - 10 = \text{📖}$$

Ready

$$18 - 16 = \text{🌈}$$

Set

$$11 - 11 = \text{🍷}$$

Show

$$13 - 12 = \pi$$

Ready

$$17 - 13 = \text{👛}$$

Set

$$12 - 10 = \text{🍰}$$

Show

$$14 - 13 = \text{🍀}$$

20 Challenge Problems

Ready

$$\text{Pie} - 7 = 10$$

Set

$$20 - \pi = \pi$$

Show

$$15 - \text{Clover} = 8$$

Ready

$$13 - \text{Pot} = 4$$

Set

$$7 - 3 = \text{Girl} - 8$$

Show

$$8 - \text{Horn} = \text{Horn}$$

Ready

$$\pi - 3 = 20 - 5$$

Set

$$\text{Horn} - 6 = 12$$

Show

$$19 - \text{Rainbow} = 15 - 3$$

Editable slides + instructions for easy customization

Editable Slide Instructions

If you would like to create additional slides for the show, the text boxes on the slides below are editable and can be copied and pasted into the existing show as many times as you would like.

To edit the slides, just click on the text box and edit away! The Fonts used on these slides are embedded into this PowerPoint so they should show up on your computer just like they do on mine. However, if something isn't looking quite right, you can also download these Fonts For Free at TpT and download them to your computer.

The Fonts used are:
[KG Miss Spangerton](#) (questions)
[KG Blank Space Sals](#) (answers)

To follow the links, right click on the link above and choose "open hyperlink".
If you want to add the same clipart images, you can find the free and paid clipart sets here: [Sarah Beckwith's Monthly Calendar Icons](#), [Editha Perfection & El Day Day Act](#), [Ethnic Postcards](#), [Multicultural School Kids](#), & [Food Art](#).
[Normally Originals](#), [St. Patrick's Day Clip Art](#). To follow the links, right click on the link(s) above and choose "open hyperlink".

Once you have created your own slides you can copy, paste, and move them wherever you would like in the show.

To do this, go to the left-hand side of the screen where you see all the slides. Click the first slide you want to copy (probably the Ready slide). Now hold down the SHIFT key and click the last slide you want to copy (probably the Answer slide). Now hit CTRL+C to copy.

Go wherever you want to put the selected slides in the show and click between the slides where you want to put your slides. Now hit CTRL+V to paste the slides you copied.

If you want to move the original slides, you can do this using the same process above, but when you paste the slides will appear blank. Don't worry, just hover over the first slide you pasted and choose "Keep Source Formatting" from the pop-up clipboard menu. Then the slides will look like the originals.

If you make a mistake, stop... breathe... And hit CTRL+Z. This will undo the last action so you can retrace your steps. (This strategy works very well for kiddos in the computer lab too.)

Ready

Click &
type

Set

Copy &
paste

Show

Copy &
paste

Answer

00