

# EL TE SOSTIENE (HOLD YOU UP)

ARRANGE BY TWICE

SHANE HARPER

♩ = 111

INTRO

F

VERSO

F

C/E Dm



6

Bb

F



PRE-CORO

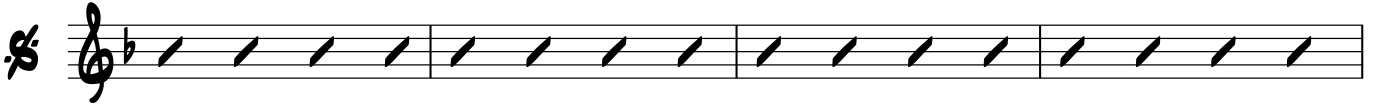
10

Bb

Dm

F

Bb



14

Bb

Dm

C



CORO

18

Bb

F

C

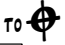


22

Bb

Dm

C

TO   
1ST D.C.



BREAKDOWN

26

Bb

F

C

Dm



30

Bb


F

C



34

F

DS TO 



2  
36

OUTRO

Bb

F

C

Dm

40

Bb

F

C

Dm

44

F