



AFINIA LABEL

L301 LABEL PRINTER

Quick Setup and Installation Guide

For more detailed information, please refer to the **User Guide** installed on your PC.

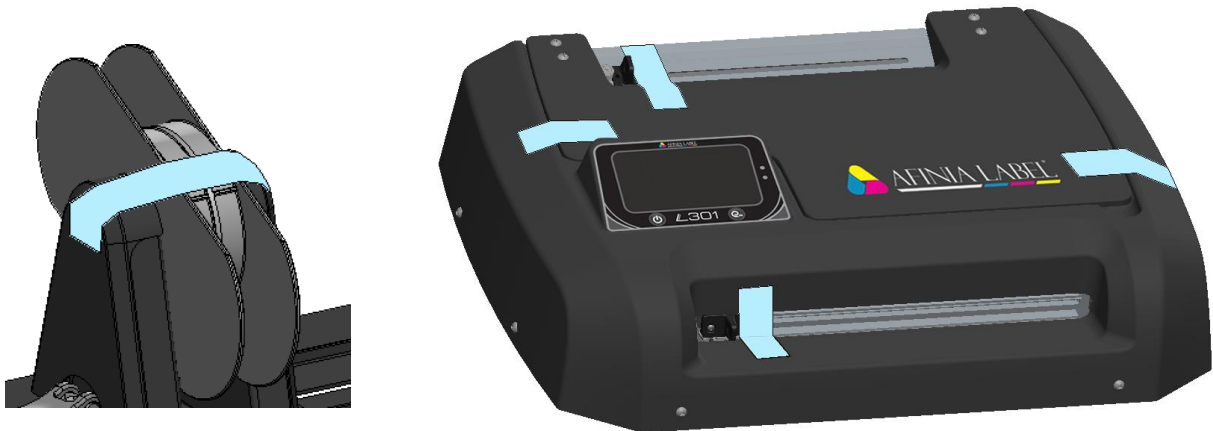
Unpack:



Click to view the [Setup and Installation video](#)

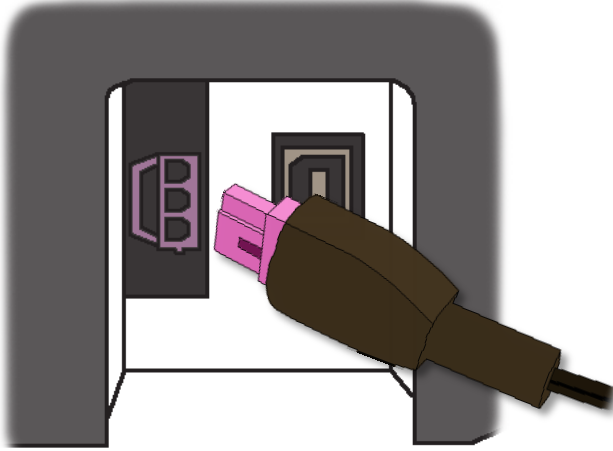


1 Remove Tape



2 Connect Power

(a)



(b)



3 Install Ink Cartridges

(a)

Open Ink Cartridge Access Door

(b)

Remove plastic tape from cartridges using pull tab

(c)

Lift cartridge latches

(d)

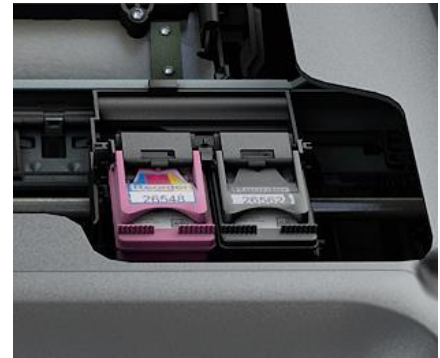
Carefully insert ink cartridges
Must be Afinia ink cartridges!

(e)

Lower cartridge latches until they click

(f)

Close Ink Cartridge Access Door



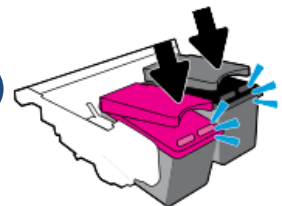
(c)



(d)



(e)



4 Install Printer

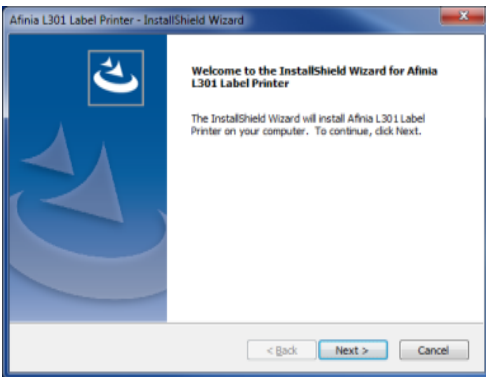
a

Download installer from
<http://afinialabel.com/support/software-drivers/>

Click the link for the L301 Installer

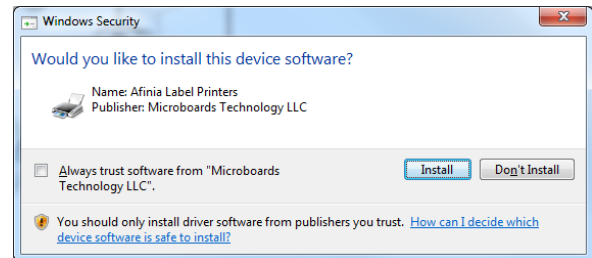
b

Run **Setup.exe**



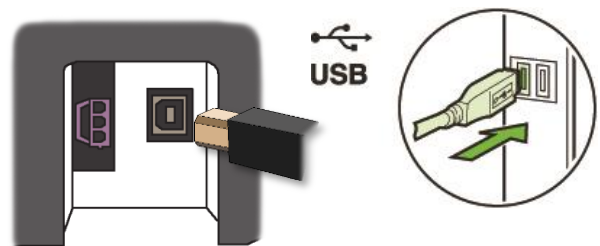
c

Click **Install** (will see this 3 times)



d

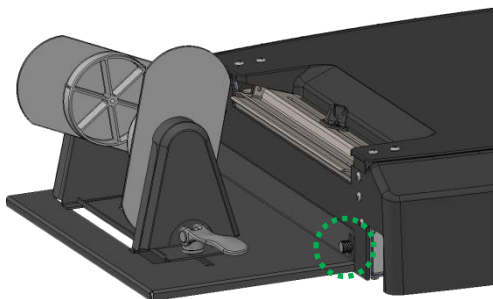
Connect printer to PC



5 Install Unwinder and Load Media

a

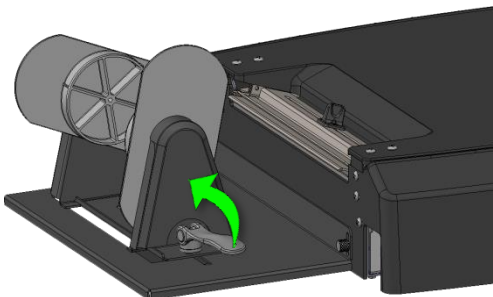
Connect Unwinder to Printer



2 thumbscrews included for installation (1 shown)

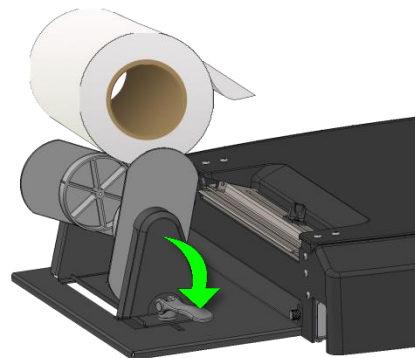
b

Lift unwinder lever on
adjustable holder to unlock



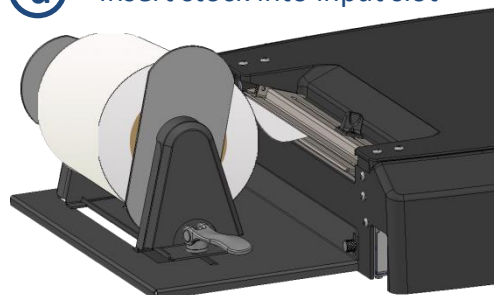
c

Place roll on fixed holder,
slide adjustable holder onto
core, lock lever down



d

Insert stock into input slot



Push stock in until auto-feed begins,
then adjust Paper Guide

Troubleshooting



If the L301 Label [Printer isn't printing](#), check the LEDs on the control panel:

- | | |
|-------------------|--|
| Both LEDs ON: | Cutter not at home position |
| Red LED blinking: | Incorrect media. Cut is required; return to home position after cutting, unload media, load correct media type or cancel print |



- | | |
|---------------------|---|
| Green LED blinking: | Verify label stock is loaded correctly; unload and reload |
|---------------------|---|



- | | |
|---------------------|--|
| Both LEDs blinking: | Display reads "Out of Paper". Cut is required; return to home position after cutting, unload old roll, load new media or cancel print. |
|---------------------|--|

[See Video](#)

If the print position on the label is not correct:



- Watch the [L301 Adjusting Print Position video](#)
- or -
- See "Adjusting Alignment for Printing" on page 17 of the User's Manual



- Verify you have the [correct label size selected](#)

If the label size you need isn't available:



- Watch the [L301 Custom Label Size video](#)
- or -
- See "Creating Custom Label Sizes" on page 19 of the User's Manual



See all Technical Videos for the L301 Label Printer at
<http://afinialabel.com/go/L301videos>

For technical questions or support issues, contact Afinia Label Technical Support:

PH: 952-279-2643

support@afinia.com

www.afinialabel.com/support

Please have the Serial Number of your Afinia Label L301 Label Printer available when contacting Technical Support.