



### General Features

- ◆ Sealed and maintenance free operation.
- ◆ Non-Spillable construction design.
- ◆ ABS containers and covers(UL94HB,UL94V-0) optional.
- ◆ Safety valve installation for explosion proof.
- ◆ High quality and high reliability.
- ◆ Exceptional deep discharge recovery performance.
- ◆ Low self discharge characteristic.
- ◆ Flexibility design for multiple install positions.



BatteryType	Valve-Regulated,Absorbed Glass Mat(AGM) Technology			
Nominal Voltage	12V			
Capacity (20°C)	20HR(2.77A,1.8V/cell)	10HR(5.34A,1.80V)	5HR(9.08A,1.75V)	1HR(31.9A,1.60V)
	55.4AH	53.4AH	45.4AH	31.9AH
Dimensions	Length	Width	Height	Total Height
	228mm(8.98inches)	138mm(5.43inches)	208mm(8.19inches)	228mm(8.98inch)
Approx Weight	Approx 17.0 kg (37.5lbs)			
Internal Resistance	Full Charged at 20°C: Approx 7.5 mΩ			
Self Discharge	3% of capacity declined per month at 20°C			
Capacity affected by Temperature (10HR)	40°C	25°C	0°C	-15°C
	103%	100%	86%	65%
Charging Voltage(V)	Cycle use		Float use	
	14.25V~14.85V at 20°C.Temp.Coefficient -30mV/°C		13.4V~13.7V at 20°C.Temp.Coefficient (-20mV/°C)	
Current	Max.Discharge Current		Initial Charging Current	
	660A(5s)		Less than 16.5A	
Operating Temp.Range	Discharge		Charging	
	-15~50°C(5 ~ 122°F)		0~40°C(32 ~ 104°F)	
	Storage			
			-15 ~ 40°C(5 ~ 104°F)	

### Constant Current Discharge (Amperes) at 20 °C (68 °F)

F.V/Time	5min	10min	15min	20min	30min	45min	1h	2h	3h	4h	5h	6h	8h	10h	20h
1.85V/cell	89.4	70.3	59.8	50.0	39.7	30.1	24.6	15.9	12.5	10.2	8.25	7.26	5.90	5.04	2.75
1.80V/cell	120.0	89.8	72.2	59.1	46.9	35.0	27.6	17.3	13.5	10.9	8.87	7.79	6.25	5.34	2.77
1.75V/cell	135.3	98.7	78.9	63.6	48.7	36.3	28.9	17.9	13.7	11.2	9.08	8.00	6.36	5.39	2.80
1.70V/cell	149.0	107.6	84.2	66.8	50.7	37.8	29.8	18.7	14.1	11.5	9.32	8.17	6.45	5.44	2.85
1.65V/cell	164.3	116.1	89.6	71.0	53.5	38.7	30.8	19.2	14.7	11.9	9.58	8.35	6.55	5.55	2.89
1.60V/cell	181.3	126.1	95.8	75.6	56.4	40.3	31.9	19.8	15.2	12.2	9.90	8.53	6.62	5.61	2.91

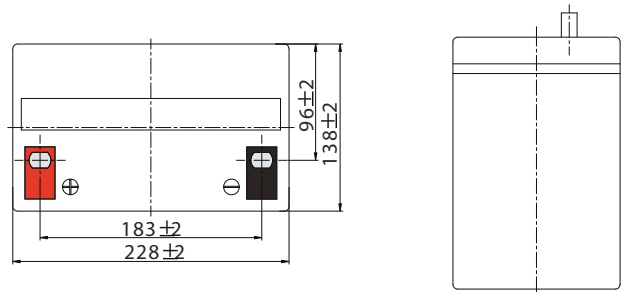
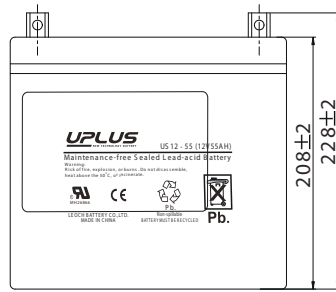
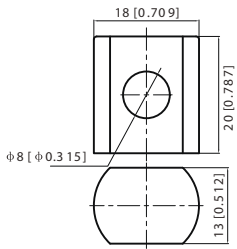
### Constant Power Discharge (Watts) at 20 °C (68 °F)

F.V/Time	5min	10min	15min	20min	30min	45min	1h	2h	3h	4h	5h	6h	8h	10h	20h
1.85V/cell	163.5	129.9	111.6	94.3	75.8	57.8	47.5	30.8	24.4	20.0	16.2	14.3	11.6	9.97	5.44
1.80V/cell	217.1	164.0	133.0	109.8	88.0	66.7	52.9	33.4	26.1	21.3	17.3	15.3	12.3	10.5	5.49
1.75V/cell	239.6	177.3	143.5	117.0	90.6	68.6	55.1	34.5	26.5	21.7	17.7	15.6	12.5	10.6	5.53
1.70V/cell	256.5	188.9	151.0	122.0	93.8	71.1	56.7	35.8	27.2	22.2	18.1	15.9	12.7	10.7	5.64
1.65V/cell	278.9	202.0	159.4	128.7	98.1	72.2	58.2	36.6	28.2	22.9	18.5	16.2	12.8	10.9	5.70
1.60V/cell	300.5	214.3	167.6	135.6	102.9	74.8	59.9	37.6	29.0	23.5	19.1	16.5	12.9	11.0	5.73

## Dimensions

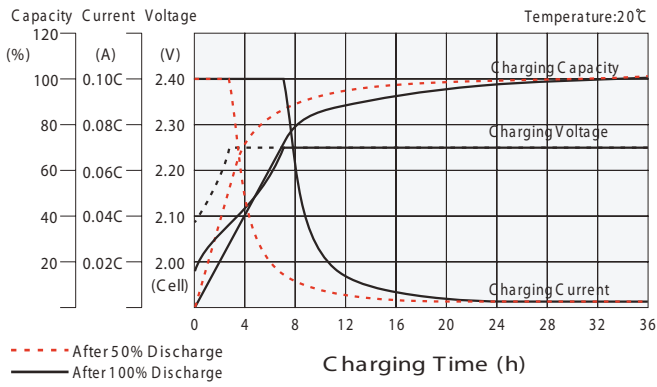
### T9 Terminal

Unit: mm [inches]

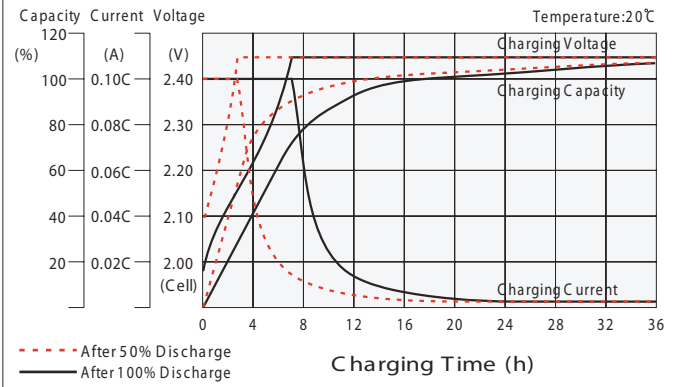


Torque: 11~14.7N\*M

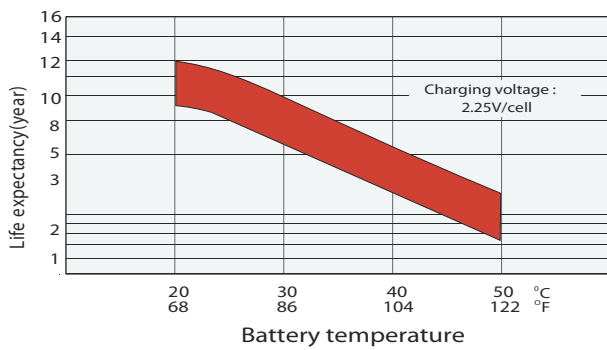
## Float charging characteristics



## Cycle use charging characteristics

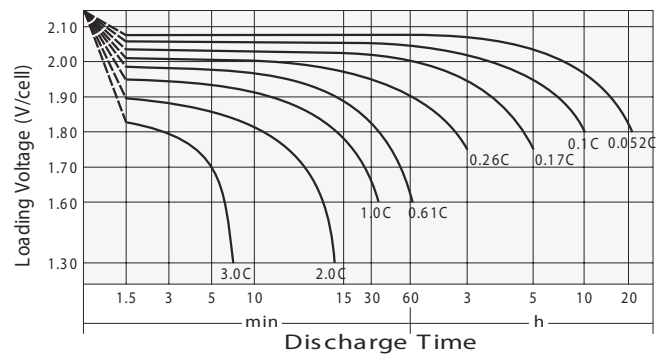


## Effect of Temperature on Long Term Float Life

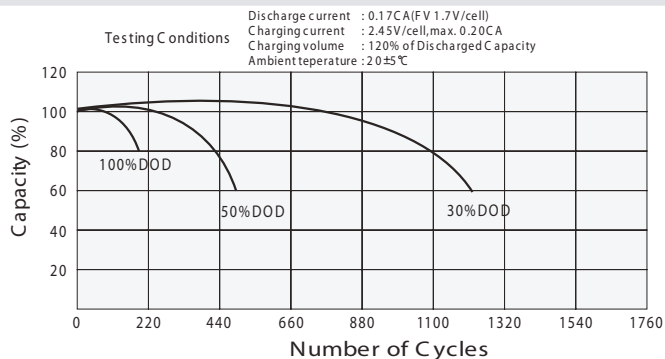


## Discharge characteristics

Temperature: 20°C



## Cycle Life in Relation to Depth of Discharge



## Self Discharge Characteristics

