

Candidate Name \_\_\_\_\_

Centre Number				Candidate Number									

## EXAMINATIONS COUNCIL OF ZAMBIA

Examination for School Certificate Ordinary Level

### Agricultural Science Paper 1 Theory

**5037/1**

**Wednesday**

**16 NOVEMBER 2016**

Additional Materials  
Answer Booklet

**Time: 2 hours**

#### Instructions to candidates

Write your name, centre number and candidate number in the spaces at the top of this page and on the Answer Booklet.

There are **Ten** questions in this paper.

#### Section A

Answer **all** questions.

Write your answers in the spaces provided on the question paper.

#### Section B

Answer any **three** questions.

Write your answers in the Answer Booklet provided.

At the end of the examination:

- 1 fasten the Answer Booklet securely to the question paper.
- 2 enter the numbers of the **Section B** questions you have answered in the grid for Examiner's use.

#### Information for candidates

The number of marks is given in brackets [ ] at the end of each question or part question.

You are advised to spend no longer than 40 minutes on **Section A**.

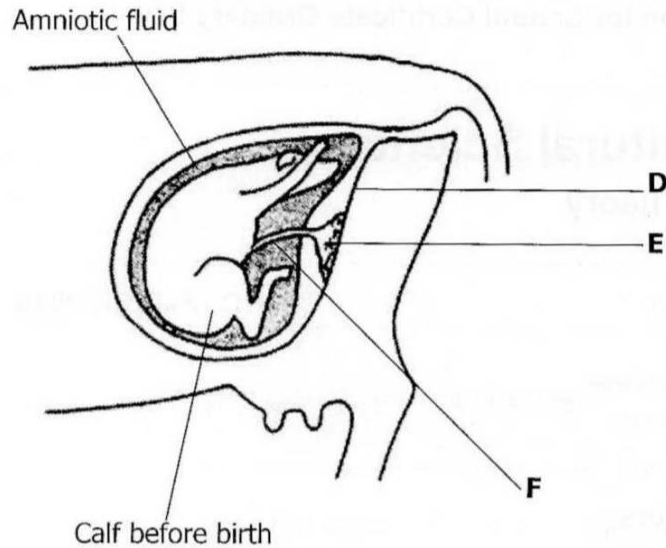
**Cell phones are not allowed in the examination room.**

FOR EXAMINER'S USE	
Section A	
Section B	
Total	<u>www.zedpastpapers.com</u>

Section A

Answer all questions in this section

- 1 **Figure 1** shows a developing foetus in the uterus of a cow.



- (a) Name the structures labelled **D**, **E** and **F**.

**D** .....

**E** .....

**F** ..... [3]

- (b) Describe how structure **E** carries out its functions.

.....

.....

..... [3]

- (c) State the recommended guide for feeding a cow during gestation.

.....

.....

..... [2]

[8 marks]

2 (a) What is forestry?

.....  
 ..... [1]

(b) Suggest **three** tree species that can be used to improve soil fertility.

(i) .....  
 ..... [1]

(ii) .....  
 ..... [1]

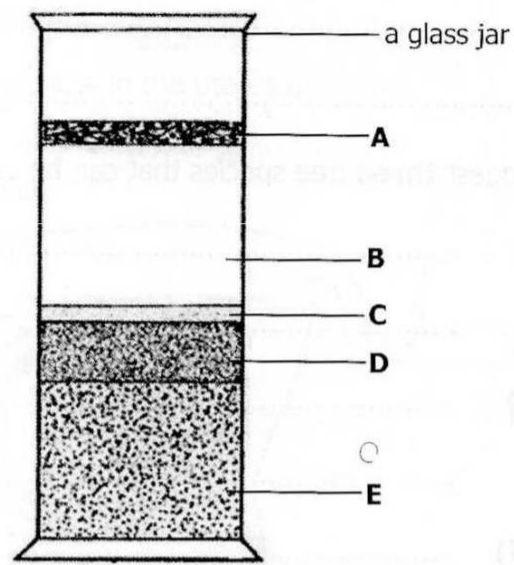
(iii) .....  
 ..... [1]

(c) State a suitable site for growing trees.

.....  
 .....  
 .....  
 .....  
 .....  
 ..... [4]

[8 marks]

3 **Figure 2** shows an analysis of a soil sample.



**Figure 2**

(a) Name the parts labelled **A** to **E**.

**A** .....

**B** .....

**C** .....

**D** .....

**E** ..... [5]

(b) State **three** soil components that cannot be determined by using the experiment in **figure 2** above.

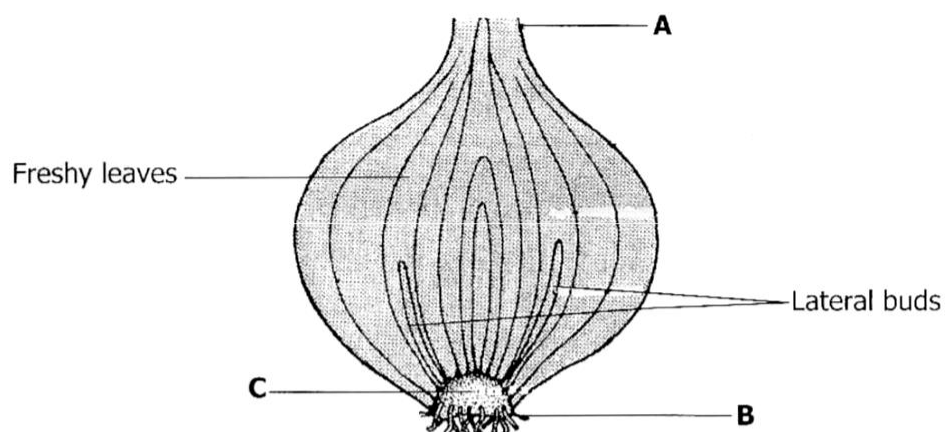
**1** .....

**2** .....

**3** ..... [3]

**[8 marks]**

4 **Figure 3** shows an onion bulb.



**Figure 3**

(a) Name the structures labelled **A** to **C**.

- A** .....
- B** .....
- C** ..... [3]

(b) State **two** functions of the structure labelled **C**.

- .....
- ..... [2]

(c) Give **one** observable adaptation of **figure 3** that shows that it is a storage organ.

- .....
- ..... [1]

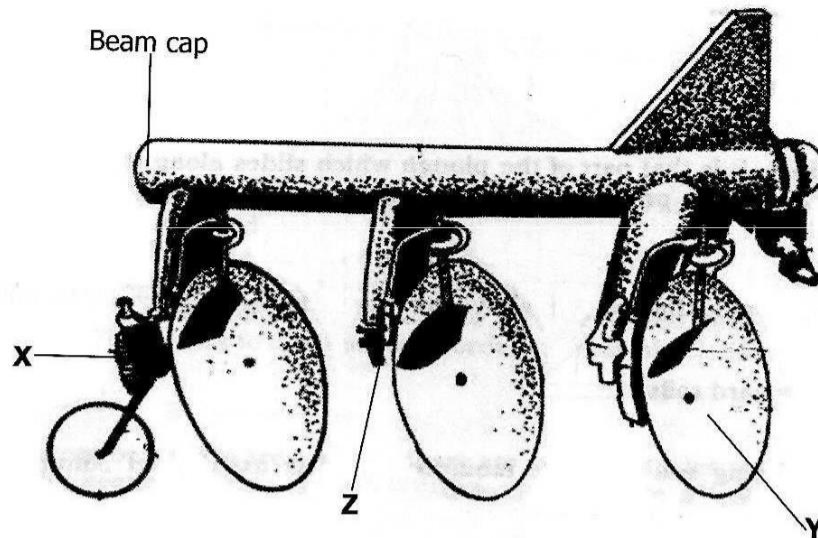
(d) Explain how onions are propagated.

- .....
- ..... [2]

**[8 marks]**



5 **Figure 4** shows a tractor drawn implement.



**Figure 4**

- (a) Identify the implement represented by **figure 4**.  
 ..... [1]
- (b) State the functions of parts labelled **X**, **Y** and **Z**.  
**X**.....  
**Y**.....  
**Z**..... [3]
- (c) State **two** advantages of using the implement represented by **figure 4**.  
 (i) ..... [1]  
 (ii) ..... [1]
- (d) How should a farmer prepare power drawn implements for storage?  
 ..... [1]
- (e) State the type of storage building for complex equipment on a farm.  
 ..... [1]

**[8 marks]**

## Section B

Answer any three questions from this section.

- 6** (a) Explain the harm caused by agriculture to the environment. [11]
- (b) Give reasons why farmers should carry out experiments with new and own technologies. [9]
- [Total: 20]**
- 7** (a) Describe the meaning of "Conservation farming." [4]
- (b) Outline how farmers practice conservation farming. [10]
- (c) Discuss the importance of practicing conservation farming. [6]
- [Total: 20]**
- 8** (a) Describe the management of broiler chicks from day old to eight weeks under the following headings:
- (i) brooding,
- (ii) feeding,
- (iii) maintenance of health. [15]
- (b) Describe the collection and storage of eggs. [5]
- [Total: 20]**
- 9** (a) Describe secondary cultivation. [10]
- (b) Explain the advantages of using a seed drill over broadcasting seed when sowing seeds on the nursery bed. [2]
- (c) State **four** advantages of using the nursery bed in vegetable growing. [4]
- (d) Define "**hardening off**" in vegetable production and describe **two** ways in which it is achieved. [4]
- [Total: 20]**
- 10** (a) Define a farm budget. [5]
- (b) Outline the importance of a farm budget. [9]
- (c) State the basic forms of farm budgets. [6]
- [Total: 20]**