

US SERIES-Front Terminal

US12-40FT (12V40AH)



General Features

- ◆ Sealed and maintenance free operation.
- ◆ Non-Spillable construction design.
- ◆ ABS containers and covers(UL94HB, UL94V-0) optional.
- ◆ Safety valve installation for explosion proof.
- ◆ High quality and high reliability.
- ◆ Exceptional deep discharge recovery performance.
- ◆ Low self discharge characteristic.
- ◆ Flexibility design for multiple install positions.



Battery Type	Valve-Regulated,Absorbed Glass Mat(AGM) Technology			
Nominal Voltage	12V			
Capacity(20°C)	20HR(2.13A,1.8V/cell)	10HR(4.03A,1.80V)	5HR(7.26A,1.75V)	1HR(26.3A,1.60V)
	42.6AH	40.3AH	36.3AH	26.3AH
Dimensions	Length	Width	Height	Total Height
	277mm(10.91inches)	106mm(4.17inches)	222mm(8.74inches)	222mm(8.74inches)
Approx Weight	Approx 15.5 kg (34.2lbs)			
Internal Resistance	Full Charged at 20°C: Approx 9.0m Ω			
Self Discharge	3% of capacity declined per month at 20°C			
Capacity affected by Temperature (10HR)	40°C	25°C	0°C	-15°C
	103%	100%	86%	65%
Charging Voltage (V)	Cycle use		Float use	
	14.4V~15.0V at 20 °C. T emp. Coefficient -30mV/ °C		13.5V~13.8V at 20 °C.Temp. Coefficient (-20mV/ °C)	
Current	Max. Discharge Current		Initial Charging Current	
	440A		Less than 12.0A	
Operating T emp.Range	Discharge		Charging	
	-15~50°C (5 ~122°F)		0~40°C (32 ~104°F)	
	Storage			
			-15 ~40°C (5 ~104°F)	

Constant Current Discharge (Amperes) at 20°C (68°F)

F.V/Time	10min	15min	20min	30min	45min	1h	2h	3h	4h	5h	6h	8h	10h	20h
1.85V/cell	66.1	55.1	47.3	37.1	28.8	23.4	14.1	10.1	8.14	6.74	5.93	4.62	3.85	2.04
1.80V/cell	74.9	61.4	52.3	40.6	30.9	24.9	14.9	10.8	8.57	7.09	6.23	4.85	4.03	2.13
1.75V/cell	82.2	66.4	55.8	42.6	32.1	25.8	15.1	11.0	8.79	7.26	6.32	4.91	4.07	2.17
1.70V/cell	88.0	70.0	58.1	43.9	32.9	26.2	15.4	11.1	8.84	7.30	6.40	4.98	4.11	2.18
1.67V/cell	91.0	71.7	59.3	44.4	33.0	26.3	15.4	11.1	8.91	7.37	6.48	5.04	4.15	2.19
1.60V/cell	95.7	74.5	61.9	45.6	33.9	27.0	15.7	11.4	9.10	7.56	6.60	5.16	4.23	2.20

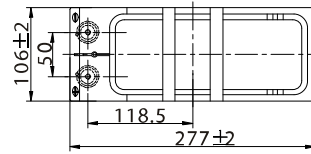
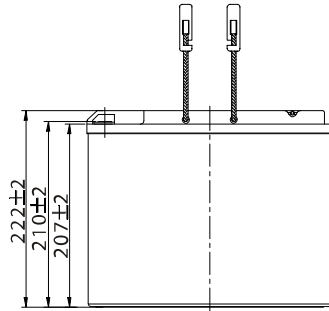
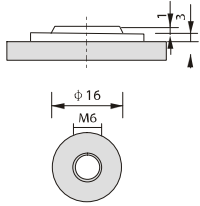
Constant Power Discharge (Watts) at 20°C (68°F)

F.V/Time	10min	15min	20min	30min	45min	1h	2h	3h	4h	5h	6h	8h	10h	20h
1.85V/cell	123.4	103.9	90.1	71.4	55.8	45.6	27.6	20.0	16.1	13.4	11.8	9.21	7.70	4.08
1.80V/cell	138.3	114.3	98.2	77.0	59.6	48.4	29.0	21.1	16.8	14.0	12.3	9.64	8.04	4.26
1.75V/cell	149.3	122.1	103.8	80.2	61.3	49.9	29.4	21.4	17.2	14.3	12.5	9.74	8.12	4.32
1.70V/cell	156.2	126.9	107.2	82.1	62.5	50.4	29.8	21.6	17.3	14.3	12.6	9.87	8.19	4.35
1.67V/cell	161.0	129.5	109.0	83.0	62.5	50.5	29.8	21.6	17.4	14.4	12.7	9.98	8.26	4.37
1.60V/cell	164.5	131.8	112.3	84.0	63.5	51.3	30.0	21.9	17.7	14.7	12.9	10.2	8.40	4.38



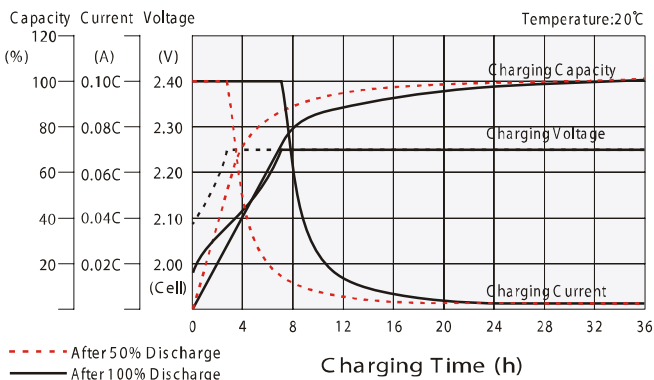
Dimensions

T6 Terminal
Unit: mm

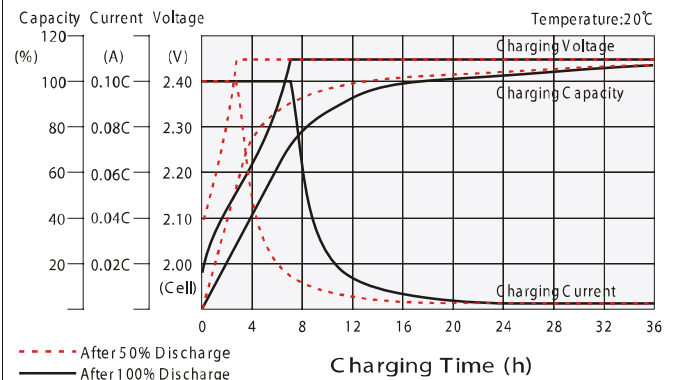


Torque: 3.9~5.4N*M

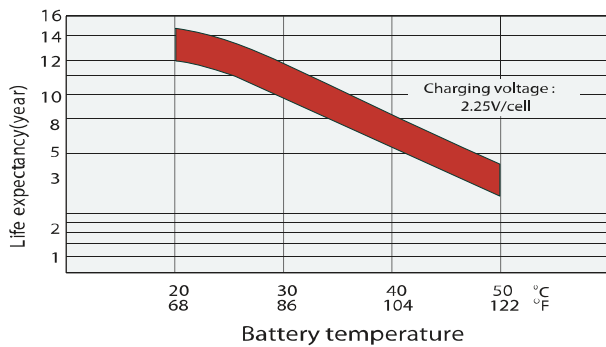
Float charging characteristics



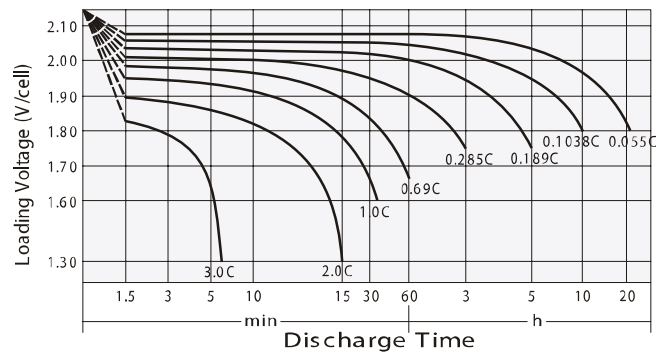
Cycle use charging characteristics



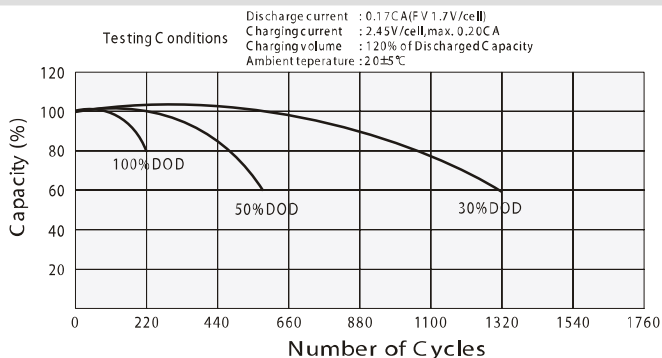
Effect of Temperature on Long Term Float Life



Discharge characteristics



Cycle Life in Relation to Depth of Discharge



Self Discharge Characteristics

