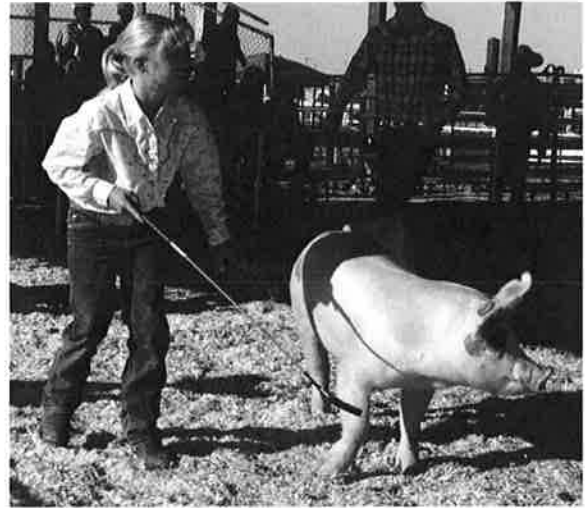


Showing a 4-H Market Hog

- Have a small brush in your pocket to brush off your hog if it gets dirty.
- Drive the pig as calmly and slowly as possible in the show ring. Be alert, avoid rushing.
- Keep pig 15 to 20 feet from the judge at all times. Do not let the pig go to the gate or get bunched up with other hogs.
- Always tap your pig on the neck, jowl or back leg. Never on the back or rump.
- Your posture should be a slightly crouched position over the whip.
- Always show alertness, keeping one eye on the judge and one eye on the animal at ALL times.
- Always keep the *animal* between you and the judge.



Just before going into the show ring, give your pig a small drink of water. If you give it too much water, your pig will be too big in the stomach area and will not show well.

Be ready to leave for the show ring as soon as the class is called.

Showing

- Have a small brush in your back pocket, so that if your pig lies down or gets dirty in some way you will be prepared to brush him off.
- Drive the pig as calmly as possible to the show ring. Keep calm, avoid rushing, be alert, and try to enter the ring when there is no confusion at the gate.
- Keep your pig clear of other animals in the ring. Take all caution to prevent fighting between animals.
- After entering the ring, drive the pig to the back side of the arena and make every effort to keep the pig from approaching the gate through which he entered. Try to stay away from corners and groups of pigs.
- Alertness in the ring is extremely important. Keep one eye on the judge and one eye on your animal at all times.
- Your posture should be that of slightly crouching over with cane or whip close to animal, but avoid overaggressiveness and overshadowing.
- Always keep the animals between yourself and the judge.

- Do not stroll too far from the judge, but at the same time avoid running your hog over him. The best show is made 15–20 feet from the judge. The showman should attempt to show the best view of the pig whenever possible.
- When the judge approaches for close inspection, assist him by stopping your pig from the front end with your cane or whip.

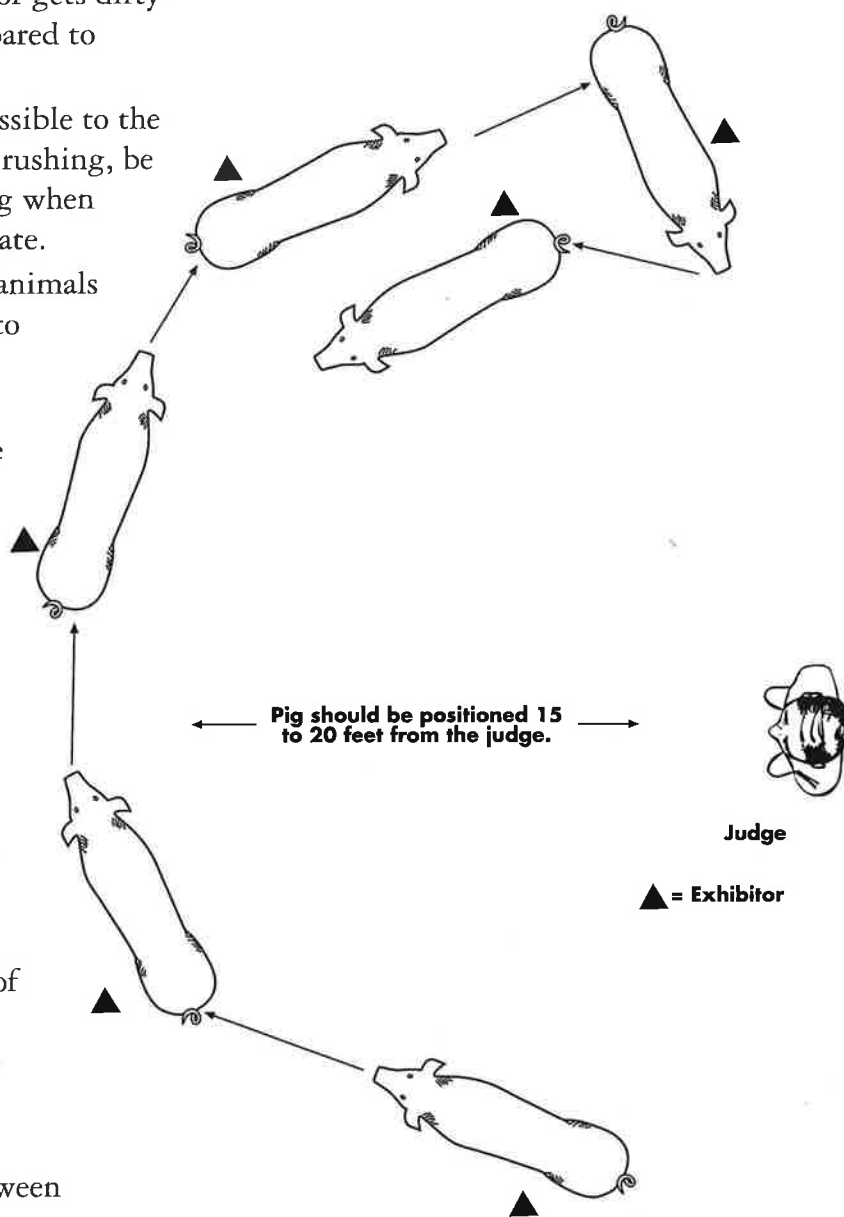


Figure 12.2
Show ring

- Stay close to and drive the pig from the neck and shoulder area by tapping lightly with the cane or whip. Never tap on the back or rump, as this may cause the tail to droop, and may also bruise muscle tissue.
- Acceptable areas to “Tap” a pig with show whip or cane are shown in figure 12-3. Proper training prior to the show should have resulted in the pig learning to move and turn by merely seeing the cane or whip. Pigs are one of the most intelligent domesticated animals and learn very quickly to respond to **visual placement** of the cane or whip. However, if your pig does need to be tapped in order to respond, these are a few areas on the pig that are acceptable.
- Switching hands is preferred if you use them at the same ability.

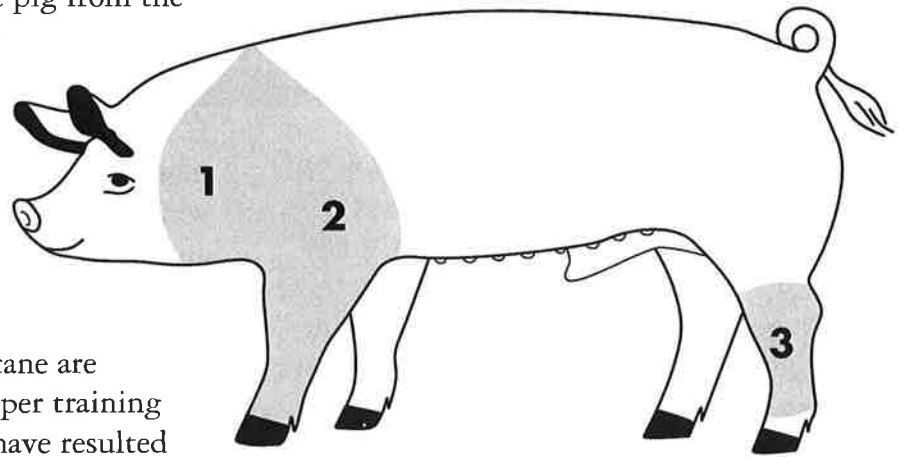


Figure 12.3
Acceptable areas for “tapping pig”

1. Jowl and neck region
2. Shoulder and front leg region
3. Rear hock region (be sure it is a **light** tap in this region).

“Bad” Places to Tap Pig

Area on pig

Ham

Why undesirable

- Is a “high-priced” cut area. Could have a potential bruise area that would need to be cut out of the carcass.
- Is not good to get in the habit of hitting an animal in a “high-priced” cut area.
- If you hit a pig in the ham, the pig will usually tuck-in his ham and arch his top. This makes the pig look undesirable or not at its best). In the show ring the animal will not look its best if you tap the ham.

Loin

- Is a “high-priced” cut area. Could have a potential bruise area that would need to be cut out of the carcass.
- Is not good to get in the habit of hitting an animal in a “high-priced” cut area.