



FIRE CAM
FIRE AND POLICE CAMERAS
WWW.FIRECAM.COM



***FIRE CAM HD DASH CAMERA
WIFI ENABLED
USER MANUAL***



Contents

WHAT'S INCLUDED

Overview
LED Status
Initial Set Up
Charging The Battery
Engine Start Mode
Power ON/OFF By Pressing Button
Card Slot Empty
Card Slot Full
APP Settings Table
Basic Settings Via SETTINGS.TXT File
Storage Chart
Take a Video (Manual)
Loop Recording
G-Sensor Settings
Playback On Your Computer
On a Mac
Important Tip For MAC Users
Wi-Fi Built In
Technical Specifications
Warranty
Warning

WHAT'S INCLUDED

1. Main Controller
2. Main Controller Flat Mount
3. 3M VHB Adhesive Type-A (Pre-Fixed)
4. Sensor Data Cable 78 Inch (2 Meter)
5. Interchangeable Lens Module and Lens Cable Lock
6. 360 Lens Flat Mount
7. 3M VHB Adhesive Type-B (Pre-Fixed)
8. 6 Adhesive Cable Holders
9. 12V Vehicle Power Supply
10. Windshield Suction Mount

FIRE CAM HD WIFI DASH CAMERA OVERVIEW

LED Status

Status Table	Lens Module LED (Top)	Camera Module Charging Indicator LED (Back)		Camera Module Status Indicator LED x 2 (Top)		Buzzer
LED Colour	RED	RED	BLUE	RED	BLUE	BEEP
Power ON	ON	OFF	Flashing	Flashing	OFF	3 Times
Power OFF	ON	OFF	Flashing	ON	OFF	6 Times
Recording Video	Flashing	ON	OFF	Slow Flashing	Wi-Fi Connected(ON), Connecting (Flashing), Disconnect(OFF)	1 Time
Stop Video Standby	ON	ON	OFF	ON	OFF	2 Times Long Beep
Card Slot Empty	Fast Flashing	OFF	OFF	Flashing	Flashing	2 Seconds
Micro SD Card Full	Fast Flashing	ON	OFF	Fast Flashing	OFF	4 Times
Battery Charging	ON	OFF	OFF	OFF	OFF	OFF
Low Battery	ON	ON	Flashing	ON	OFF	OFF

REMARKS:

When connected to the Power Supply, the RED charging LED is ON in all modes except when the internal built-in Li-Po battery is fully charged.

Initial Set Up

1. Please ensure the camera is OFF before you insert or take out the Micro SD card.
2. Open the Micro SD card slot cover.
3. Install a micro SD memory card (max up to 64GB(FAT32)) into the card slot with contacts facing upwards.
4. If no micro SD memory card is inserted, the Status Indicator LED will flash red and blue and the camera will shut OFF after 30 seconds.
5. When using a micro SD memory card, there should be no DATA from other devices on the card. If you are using a micro SD memory card for the first time, you should first format (FAT32) the card in your computer. It is recommended to use Class 6 or above.

An easy way to format on a PC or MAC is to download the FREE SD Formatter at: https://www.sdcard.org/downloads/formatter_4/

■■■■■ Charging The Battery

There is a built-in Li-Po (Lithium-Polymer) battery inside the Fire Cam Dash Camera. The RED color charging LED turns ON while charging and goes OFF when the battery is fully charged. The BLUE color LED flashes when the battery power is low. The internal battery is normally charged via the 12V Power Supply. The internal battery is only designed for power failure in the event you lose 12V power and will only last 30-60 seconds after which the video will be saved.

Engine Start Mode

Turn Camera ON	After the vehicle has started and the cameras power supply is plugged into the 12V power source from the vehicle, the camera will turn on and automatically start recording. *NOTE: If the vehicles 12V power supply is always ON, the camera will never turn off if plugged in. In this case you may want to purchase a 12V vehicle power switch that can turn the camera ON/OFF. These can be found in most auto parts stores.
Turn Camera OFF	When the Ignition is turned OFF, the camera stops recording and saves the recorded files automatically without pressing any button. This could take 30-60 seconds due to the internal battery.

Power ON/OFF By Pressing Button

Turn Camera ON	Turn ON the camera by pressing the power button once. It will beep 3 times and the Blue LED will flash on Charging Indicator and Red LED and the Lens Module will be steady ON. A single beep will indicate Recording with Red LED flashing on Lens Module and slowly flashing on the Status Indicator. *NOTE: The power button is intentionally hard to press to avoid accidentally powering on.
Turn Camera OFF	Turn the camera OFF by pressing and holding the Power button for at least 2 seconds. The Blue LED flashes on the Charging Indicator and will beep 6 times and all LEDs will turn OFF.

Card Slot Empty

If there is no micro SD card in the camera, the red and blue LED will flash for 30 seconds. Then, the camera will switch OFF automatically.

Card Slot Full

If loop feature is set OFF, the micro SD card will run out of memory storage. The camera will then shut down automatically 1 minute after the card is Full. During this time interval, you can use the APP Menu to delete, format, download, watch in preview mode (streaming) or perform any other Menu functions via built-in Wi-Fi without the need of a computer.

APP Settings Table

Video Resolution	1080P @30fps (default)
	720P @60fps
Time Lapse	Off (default)
	1 frame per second
	1 frame per 2 seconds
	1 frame per 5 Seconds
	1 frame per 10 Seconds
	1 frame per 30 Seconds
	1 frame per 60 Seconds
Loop Record	OFF
	ON (default)
Video Time	1 min
	2 min
	3 min
	5 min (default)
	10 min
	15 min (recommended)
G-Sensor Sensitivity	High (default)
	Mid
	Low
	OFF
Audio Record	OFF
	ON (default)
Date Stamp	OFF
	ON (default)
Quality	Fine (default)
	Good
	Normal
Frequency	50HZ

	60HZ
Default Setting	OK
	Cancel
Format	OK (*NOTE: Format will erase ALL data from SD card)
	Cancel
Auto Power Off	OFF
	3min (default)
	5min
	10min
Wi-Fi Name	FC-DASH-CAM (default)
Reset Password	00000000 (default)
Camera Name	FC-DASH-CAM (default)
Version	BP2016030901 (Subject to change without notice)

Basic Settings Via SETTINGS.TXT File

You can also change the settings via the SETTINGS.TXT file. Once the changes are made, make sure you save them and then the file will be created automatically on the micro SD card after the camera is turned ON.

You can also type your name on the screen of video.

For example: Asst-Chief-Jones



CAUTION!

To prevent serious system crash, only English alpha-numeric can be used for below parameters and camera name. Wi-Fi Name and Camera Name are not allowed to use symbols or empty space(s) between the wordings. ONLY _ (underscore) or – (hyphen) can be used.

Settings	Parameters	Camera_Name	Remarks
#####			
#system setting			
CAUTION: TO PREVENT SERIOUS SYSTEM CRASH, ONLY ENGLISH ALPHA-NUMERIC CAN BE USED FOR BELOW PARAMETERS AND CAMERA NAME.			
#####			
VERSION	= BP2015050402		# DO NOT CHANGE
WIFI_NAME	= Bike1 Pro		# wifi name,length 1-32 (a-z, A-Z, 0-9)
WIFI_PASSWORD	= 12345678		# wifi password, length 8-32 (a-z, A-Z, 0-9)
RESOLUTION	= 0		# (0=1080p@30fps, 1= 720p@60fps)
VIDEO_TIME	= 0		# (0=5mins, 1=10mins, 2=15mins) recording interval time
QUALITY	= 0		# (0=fine, 1=good, 2=normal)
LOOP_RECORD	= 1		# (0=off, 1=on)
DATE_STAMP	= 1		# (0=off, 1=on)
G-SENSOR	= 0		# (0=high, 1=mid, 2=low, 3=off)
TIMELAPSE	= 0		# (0=off, 1=1s, 2=2s, 3=5s, 4=10s, 5=30s)
AUDIO_RECORD	= 1		# (0=off, 1=on)
AUTO_POWER_OFF	= 1		# 0=Off, 1=3min, 2=5min, 3=10min
TIME_SET	= N2015.01.01.00:00:00		# Y=change N=No change
DEFAULT_SETTING	= 0		# (0=false, 1=true) when set to 1, the camera will ignore other settings, set to system default and write the default settings in this file
CAMERA_NAME	= My-MotorBike		# Device ID
#####			
#end			
#####			

Storage Chart Micro SD Card					
Mode	Video				
FAT32 Formatted	4GB	8GB	16GB	32GB	64GB (Fat32)
1080P @30FPS	30 mins	60 mins	120 mins	235 mins	470 mins
720P @60FPS	35 mins	70 mins	140 mins	270 mins	530 mins

Take a Video (Manual)

Turn ON the camera by pressing the Power button. The camera beeps 3 times with lens/status twin LEDs flashing Red and the Charger LED flashing Blue. At the fourth beep, the camera automatically starts recording slow blinking twin status LEDs Red and flashing Lens LED Red. To STOP recording, press the STOP button once and camera is in Standby mode after 2 beeps and all LEDs steady RED. To completely switch OFF the Camera, Long Press the Power button.

Loop Recording

This special feature allows the user to continuously record the video clips without running out of storage memory. When Loop ON mode is selected, the oldest video clips are recorded over by the current videos. If this feature is set OFF, the camera will shut down automatically 1 minute after the memory storage on the card is full. This extra time interval allows the user to download the files or watch in preview mode (streaming) or perform any other menu functions using built-in Wi-Fi.

G-sensor Event Recording

If an event happens, such as sudden impact, high-speed driving, an overturn or an accidental crash, the G sensor will prompt the recorder to lock and save the recording. The locked/saved recordings will not be replaced by temporary video clips even when the camera is loop recording. The camera will automatically store the video and protect it against being auto-deleted. The locked file name EVExxxx.MOV will be different from the normal files FILExxxx.mov. Please note that you can also create locked event files manually by pressing the POWER button once.

If the G-Sensor sensitivity is set to "High", even minor shocks will be detected. If the G-Sensor sensitivity is set to "Low", it will only detect significant shocks. G-Sensor sensitivity can be adjusted or disabled in the settings menu.



Playback On Your Computer

Turn OFF the camera. Take out the micro SD card and use your own card reader to connect with your computer.

Important Tip For MAC Users

When deleting files from your micro SD card, you must empty the trash bin on your MAC before removing the micro SD card from the computer, or ghost files will remain and the card will remain full. You can also format the micro SD before removing it. An easy way to format on a PC or MAC is to download the FREE SD Formatter at:

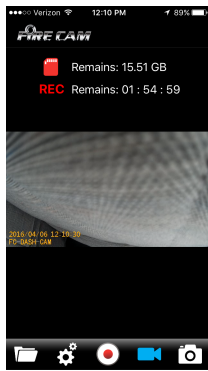
https://www.sdcard.org/downloads/formatter_4/

Wi-Fi Built In

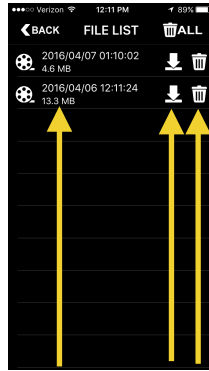
The Fire Cam HD WIFI Dash Camera allows you to connect to the "Firecam 1080" smartphone/tablet via the APP. This is available in the App and iOS store.

Wi-Fi ON	Turn ON the Wi-Fi by pressing the Wi-Fi button, the Wi-Fi LED starts flashing Blue. Now go to your smart phone / tablet setting and turn on the Wi-Fi network and select for "FC-DASH-CAM". Password: 00000000. Then open the "Firecam 1080" app.
----------	---

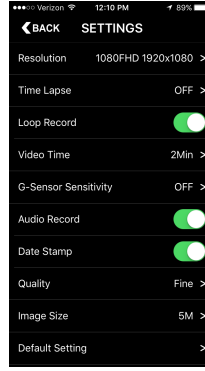
The APP lets you control your camera remotely using a smart phone or tablet. Features include full camera control of all settings, live video preview, streaming video to the phone or tablet, download and playback. Before you record, see what your camera sees by viewing it on your smart phone or tablet's screen.



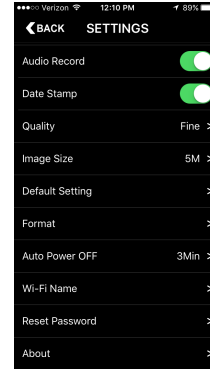
1 2 3 4 5



6 7 8



Click on Settings to change camera settings



- ① Playback Button
- ② Setting Button
- ③ Start / Stop Recording
- ④ Recording Mode
- ⑤ Photo Button
- ⑥ File Name
- ⑦ Download Button
- ⑧ Delete Button

Technical Specifications

Optics:

- FISHEYE view @1080p (default) Mode
- Ultra Wide Angle view @720p Mode
- Lens aperture f/1.8, fixed focus glass lens
- Optical lens: ø18mm FISHEYE Lens
- Lens Construction: 6 Elements
- Angle of view: 160° (diagonal)

Video:

- Full HD Resolution Settings: 1080p: 1920x 1080 @ 30fps
- HD Resolution Settings: 720p: 1280x 720 @ 60fps
- Digital Video Motion Stabilization Technology
- Anti-Shaking (Stabilizer)
- Video Format: H.264 (avc1) / MOV
- Exposure Control: Auto
- White Balance: Auto
- G-Sensor

Audio:

- Built-in microphone

Storage:

- Memory: Micro SD card, up to 64GB (FAT32) capacity (recommended Class 6 or above)
- Avg. Record Time: 5~10min/GB

Battery:

- 3.7V 850mAh Li-Po Built-in

Wi-Fi:

- (IEEE) 802.11n

Operating System (for USB drive): WIN XP, 7, 8, Vista; Mac OS X 10.8.4+

WARRANTY / DISCLAIMER:

Abuse of Camera IS NOT covered under warranty. Fire Cam warrants its products against defects in material or workmanship for 12 months from date of purchase unless otherwise specified. The Fire Cam HD WIFI Dash Cameras one year warranty is limited to the replacement or repair of the defective item at no charge if we determine the item to be defective. This warranty shall not apply to any item subject to misuse including such as failure by buyer to follow instructions, product modification, ordinary wear and tear, negligent or improper operation. Abuse of camera IS NOT covered under the warranty. Fire Cam products are not recommended for concrete training towers or flashover chambers where it could sustain high temps for long periods of time. Electronic damage due to over-voltage, incorrect polarity from product power supplies, or incorrect MAINS voltage is not covered under the warranty. **DO NOT USE ANY AFTERMARKET CHARGERS FOR YOUR CAMERAS.** Fire Cam chargers are designed specifically for Fire Cam's only. Modification, repair, or attempted repair by anyone other than Fire Cam or without the written permission of Fire Cam will void this warranty. This warranty covers the cost of factory repair, labor and parts on eligible equipment which is returned. Equipment, which is repaired under this warranty will be returned freight prepaid. If it is determined that the Fire Cam does not need repair, the purchaser shall pay for return shipping charges. Disclaimer: Fire Cam does not assume any responsibility for any accidents or injuries incurred to the user of the Fire Cam HD WIFI Dash Camera.

WARNING!

Firefighting is a dangerous activity and should only be performed by a trained professional. The end user of Fire Cam products assumes all responsibility connected with the use of this product including but not limited to continuing education, and activity that conforms to local Standard Operating Procedures. Neither the manufacturer nor any distributor assumes any liability for injuries sustained while using Fire Cam products. The Fire Cam® Fire Helmet Cameras™ are manufactured of anodized aluminum, and may retain heat for several minutes after being exposed to a heated environment such as a structure re or training re so it needs to be handled with care. The end user is responsible for installation consistent with the mounting instructions, as well as regular safety inspections of the BlackJack Holder and Fire Cam Fire Helmet Cameras. For further questions, please go to www.FireCam.com under the "contact us" page.