

EVENT DETAILS

Being held at
St Helen's Primary School
Colne Road, Bluntisham, Cambs, PE28 3NY

Bidwells invite you to a public exhibition of plans in respect of the proposed residential development on Land west of Colne Road, Bluntisham

The plan illustrates the location of the proposed development in red.
We anticipate that this site could accommodate up to 135 dwellings.

We are holding a public exhibition of plans to provide you with the opportunity to find out more and give us your views on this proposed residential and associated development, which will help shape our proposals for the site.

Please note you are able to park in the car park adjacent to the school

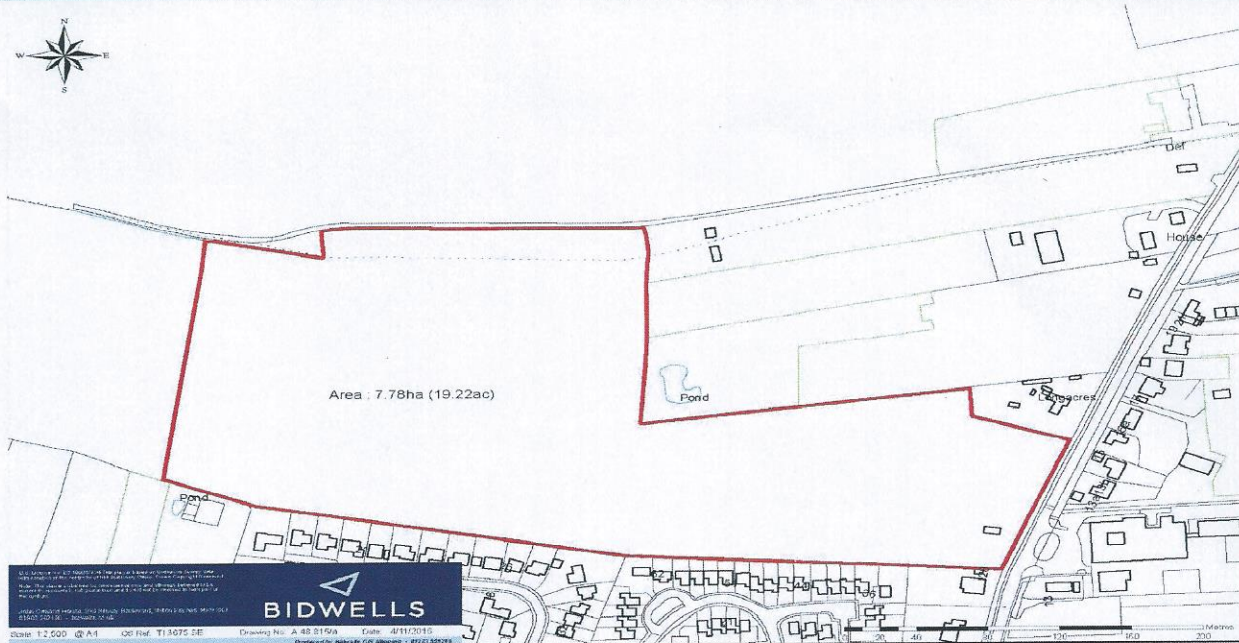
If you are not able to attend the event, you can still provide feedback by e-mail: tracey.fullbrook@bidwells.co.uk
or by post to: **Bidwells Planning Team, Bidwells, John Ormond House, 899 Silbury Boulevard, Milton Keynes**

MK9 3XJ

Comments to be received by

Friday 3rd March 2017

PUBLIC CONSULTATION EVENT



Seeking your views on a proposed new residential development on Land west of Colne Road, Bluntisham on Tuesday 21st February - 4pm - 8pm