

Mississippi Department of Education



MS-CPAS2 Secondary Practice Assessment/ Assessment Preparatory Guidelines *10247P1-2013 Construction Core*

General Instructor Preparatory Guidelines

- **STUDENTS SHOULD ONLY TAKE PRACTICE TESTS ONLINE.**
- The practice tests are delivered the **SAME WAY** as the live tests.
- Use the correct curriculum and MS-CPAS2 assessment blueprint located at: <http://www.rcu.msstate.edu/Curriculum/CurriculumDownload.aspx>
 - Teach the correct number of instructional hours per unit.
 - Cover each competency/objective listed in the curriculum/blueprint.
- Use multiple-choice (selected response) assessments in your classroom. Examples are Unit Tests, Quizzes, and Timed Final Practice Exams.
- Take **Assessment 101** (RCU online course) to learn how to form well-constructed assessments for your classroom.
- Review previous MS-CPAS2 year reports to identify class unit performance. Adjust in-class reviews accordingly.
- Students should take the **DEMO MS-CPAS2** *OR* the **PRACTICE MS-CPAS2** to help students prepare for testing day.
- **Only** use this document as a review of the online practice assessment **AFTER** students take the practice assessment online. It is **NOT** meant for use as a study guide or predict student performance on the live test.

MS-CPAS2 PRACTICE Assessment

1. All of the following are acceptable PPE for welding operations EXCEPT:

- a. full face shield with proper lens.
- b. earplugs to prevent flying sparks from entering your ears.
- c. high-top leather boots.
- d. a polyester long sleeve shirt.

2. What materials are burning in a Type A fire?

- a. Wood and paper
- b. Gasoline, grease, and oil
- c. Electrical motors and wires
- d. Combustible metals

3. Safe lifting of a heavy object is done mostly with which muscles?

- a. Arm
- b. Back
- c. Leg
- d. Chest

4. When a worker is injured on the job, he or she should:

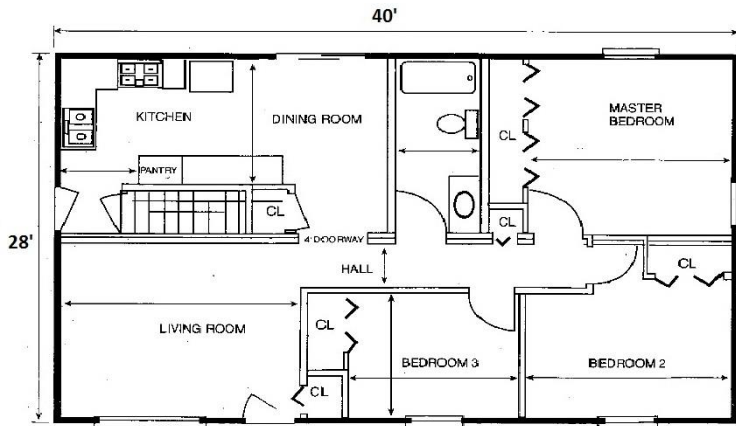
- a. call his or her parents.
- b. report to the supervisor immediately.
- c. disregard the injury.
- d. show a fellow worker.

5. Which of the following choices BEST describes why you should use the proper tool for a job?

- a. Personal safety
- b. Labor savings
- c. Increased job speed
- d. Less tool damage

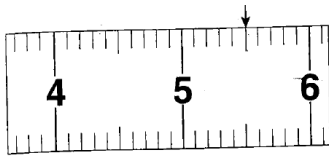
- 6. A piece of pipe is 150 feet long. The pipe will be cut into 10 equal pieces. What is the length of each piece of pipe?**
- a. 5 ft
 - b. 10 ft
 - c. 15 ft
 - d. 50 ft
- 7. A sheet of plywood weighs 48.7 lb. How much does 50 sheets weigh?**
- a. 243.5 lb
 - b. 2,430 lb
 - c. 2,435 lb
 - d. 2,532 lb
- 8. The distance between two 1-in. pipe elbows in a plumbing system is 48 in. To replace the section of pipe between those elbows would require a pipe that is how many inches long if each end would be screwed into the elbows $\frac{5}{8}$ in.?**
- a. $50 \frac{1}{2}$ in.
 - b. $49 \frac{1}{4}$ in.
 - c. $48 \frac{1}{2}$ in.
 - d. $46 \frac{1}{4}$ in.

9. What is the total square footage of the floor plan below?



- a. 1120 square feet
- b. 1248 square feet
- c. 1628 square feet
- d. 2800 square feet

10. In the figure below, the arrow is pointing to:



- a. 5.2 cm.
- b. 5.3 cm.
- c. 5.4 cm.
- d. 5.5 cm.

11. How long is a standard yard stick?

- a. 2 ft
- b. 3 ft
- c. 4 ft
- d. 5 ft

12. The top number of a fraction is the:

- a. numerator.
- b. negative.
- c. denominator.
- d. positive.

13. In order to clear a calculator, you must press the following key:

- a. RM.
- b. M+.
- c. CM.
- d. On/C.

14. What safety device is used to push material when ripping narrow stock on the table saw?

- a. Sticker
- b. Push stick
- c. Metal block
- d. Block of wood

15. The purpose of double insulation on a portable power drill is to:

- a. keep the drill cooler.
- b. keep the drill operating at a constant temperature.
- c. reduce the chance of electrical shock.
- d. reduce the drill noise so it will run quieter.

16. Before removing sawdust from the lower blade guard of a circular saw, you should:

- a. disconnect the power.
- b. set the trigger lock.
- c. remove the blade.
- d. apply grease or oil.

17. What type of saw is shown below?



- a. Portable circular
- b. Jig
- c. Reciprocating
- d. Miter

18. What type of level is shown below?



- a. Board
- b. Torpedo
- c. Builder's
- d. Line

19. What is the first step in installing or changing cutters in a router?

- a. Loosen the collet.
- b. Disconnect the power source.
- c. Insert the shank.
- d. Tighten the collet.

20. Simple single-line drawings of a piping system are:

- a. pictorial drawings.
- b. schematic drawings.
- c. orthographic drawings.
- d. isometric drawings.

21. The term *north elevation* is used to describe the:

- a. direction of a compass indicator.
- b. height of contours on the north side of a piece of property.
- c. foundation wall on the north side of a residence.
- d. north view of a residence.

22. A fitting used to change the direction of the pipe is a/an:

- a. reducer.
- b. elbow.
- c. adapter.
- d. union.

23. Which of the following is an example of a hidden line?

- a. 
- b. 
- c. 
- d. 

24. What type of plan will show the lowest level of a building, including concrete footings and slabs?

- a. Foundation
- b. Structural
- c. Civil
- d. Floor

25. A statement that is written and provided by an architectural and engineering firm that defines the quality of work to be done and describes the materials to be used are:

- a. specifications.
- b. contracts.
- c. legends.
- d. RFIs.

26. Working with motorized lifting equipment makes verbal communication difficult. In this situation, what should workers use to communicate effectively?

- a. Hand signals
- b. Spotter
- c. Shouting
- d. Written notes

27. You need a diameter that is twice the height of the object being lifted to calculate the area of the:

- a. load.
- b. pipe mule.
- c. fall zone.
- d. jack.

28. A device used to move large pieces of pipe is a:

- a. pipe transport.
- b. powered wheelbarrow.
- c. pallet jack.
- d. freight elevator.

29. The forklift hand signal that consists of clasping the hands in front of the body is called:

- a. raise the tines.
- b. tilt mast back.
- c. dog everything.
- d. tilt mast forward.

30. The person who ensures you have a clear, unobstructed path by walking in front of you when you are transporting a long load is a:

- a. jack.
- b. work zone.
- c. concrete mule.
- d. spotter.

31. When working with motorized lifting equipment, workers should communicate using:

- a. written notes.
- b. hand signals.
- c. shooting.
- d. cell phones.

32. The location of a particular door can be found on the:

- a. floor plan.
- b. remarks column.
- c. window schedule.
- d. elevation drawing.

33. The part of the rafter that extends beyond the double plate is a:

- a. barge rafter.
- b. seat cut.
- c. rafter tail.
- d. common rafter.

34. What is the minimum number of sheets of 4-ft by 8-ft siding needed to cover a wall that is 7 ft tall and 42 ft long?

- a. 10
- b. 14
- c. 18
- d. 20

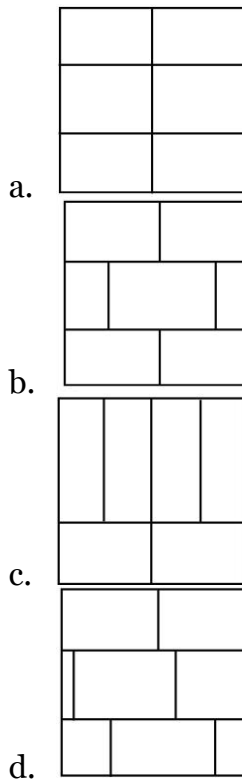
35. When cutting OSB for installation, which tool should be used?

- a. Utility knife
- b. Chain saw
- c. Portable circular saw
- d. Keyhole saw

36. How many studs are required for a corner post?

- a. Three
- b. Four
- c. Five
- d. Six

37. What is the proper method for applying subfloor assembly with the MOST efficient use of materials and time, if all floors are 12 ft by 16 ft?



38. An individual who calculates the amount of necessary materials and required labor for a job is known as:

- a. a supervisor.
- b. an architect.
- c. an estimator.
- d. a laborer.

39. A cut made lengthwise in the direction of the grain in lumber is known as a:

- a. cross cut.
- b. pocket cut.
- c. miter cut.
- d. rip cut.

40. What letter represents the highest quality plywood?

- a. A
- b. B
- c. C
- d. N

41. You have warned a co-worker that he or she is using pneumatic nailers and staplers improperly. What must you do now?

- a. Take the tool away from the co-worker.
- b. Report it to your supervisor.
- c. Ignore it.
- d. Work as far away as possible.

42. The movement, or flow, of electrons in a circuit is called:

- a. volts.
- b. joules.
- c. transformers.
- d. current.

43. Which of the following is intended for the electrical protection of personnel?

- a. GFDE
- b. GFCC
- c. GFCI
- d. GFCP

44. The standard system of wire sizes in the United States is the:

- a. American Wire Gauge (AWG).
- b. Birmingham Gauge (BG).
- c. Manufacturers' Foundation (MF).
- d. Manufacturers' Standard Gauge (MSG).

45. The symbol "S₃" on an electrical blueprint represents:

- a. three switches.
- b. a three-way switch.
- c. a three-prong socket.
- d. a three-way socket.

46. What is the major purpose of stranding wire?

- a. To make the overall diameter of wire smaller
- b. To improve flexibility
- c. To allow more conductors in a raceway
- d. To allow wire to stretch

47. In which of the following can a light outlet be controlled from two locations?

- a. S₄
- b. S₃
- c. S₂
- d. S

48. Until determined otherwise, all electrical equipment and wires should be considered:

- a. energized.
- b. de-energized.
- c. shorted.
- d. open.

49. Voltage is measured with a/an:

- a. ammeter.
- b. ohmmeter.
- c. resistor.
- d. voltmeter.

50. How many connections are on a standard single-pole light switch?

- a. 1
- b. 2
- c. 3
- d. 4

MS-CPAS2
PRACTICE Assessment
Answer Key

Answer Key

Question	Answer
1	D
2	A
3	C
4	B
5	A
6	C
7	C
8	B
9	A
10	D
11	B
12	A
13	D
14	B
15	C
16	A
17	A
18	D
19	B
20	B
21	D
22	B
23	C
24	A
25	A

Question	Answer
26	A
27	C
28	A
29	C
30	D
31	B
32	A
33	C
34	A
35	C
36	A
37	B
38	C
39	D
40	D
41	B
42	D
43	C
44	A
45	B
46	B
47	B
48	A
49	D
50	C