

**OEDM AD 2.1 AERODROME LOCATION INDICATOR AND NAME****OEDM - AL DAWADMI (Domestic)****OEDM AD 2.2 AERODROME GEOGRAPHICAL AND ADMINISTRATIVE DATA**

1	ARP coordinates and site at AD	242659N 0440716E
2	Direction and distance from (city)	25 KM West of the city of Al Dawadmi
3	Elevation/Reference temperature	3031 FT / 40°C
4	Geoid undulation at AD ELEV PSN	NIL
5	MAG VAR/Annual change	3°E (2015) 0.05° Increasing
6	AD Administration, address, telephone, telefax, telex, AFS	General Authority of Civil Aviation Al Dawadmi Airport P.O.Box 1406 Al Dawadmi 11911 Saudi Arabia TEL: +966 11 6434151, +966 11 6434044, +966 11 6434224 FAX: +966 11 6434070
7	Types of traffic permitted (IFR/VFR)	IFR and VFR
8	Remarks	Uncontrolled Aerodrome Domestic Aerodrome

**OEDM AD 2.3 OPERATIONAL HOURS**

1	AD Administration	HS SUN -THU 05:00 - 13:00 ( 0800-1600 LMT )
2	Customs and immigration	NIL
3	Health and sanitation	NIL
4	AIS Briefing Office	NIL
5	ATS Reporting Office (ARO)	NIL
6	MET Briefing Office	H24
7	ATS	NIL
8	Fuelling	NIL
9	Handling	NIL
10	Security	H24
11	De-icing	NIL
12	Remarks	Operational hours 11:00 - 19:00 UTC

**OEDM AD 2.4 HANDLING SERVICES AND FACILITIES**

1	Cargo-handling facilities	Saudia Airlines
2	Fuel/oil types	JET A1 / -
3	Fuelling facilities/capacity	NIL
4	De-icing facilities	NIL
5	Hangar space for visiting aircraft	NIL
6	Repair facilities for visiting aircraft	NIL
7	Remarks	NIL

**OEDM AD 2.5 PASSENGER FACILITIES**

1	Hotels	In the City
2	Restaurants	NIL
3	Transportation	NIL
4	Medical facilities	In the City
5	Bank and Post Office	In welcomers hall
6	Tourist Office	NIL
7	Remarks	NIL

**OEDM AD 2.6 RESCUE AND FIRE FIGHTING SERVICES**

1	AD category for fire fighting	CAT 7
2	Rescue equipment	Yes
3	Capability for removal of disabled aircraft	NIL
4	Remarks	NIL

**OEDM AD 2.7 SEASONAL AVAILABILITY - CLEARING**

1	Types of clearing equipment	NIL
2	Clearance priorities	NIL
3	Remarks	NIL

**OEDM AD 2.8 APRONS, TAXIWAYS AND CHECK LOCATIONS/POSITIONS DATA**

1	Apron surface and strength	Surface: Concrete / Asphalt Strength: 61/F/B/X/T
2	Taxiway width, surface and strength	Width: 30 M (Center TWY) + 2x10.5 M Paved shoulder . Surface: Asphalt Strength: 61/F/B/X/T
3	Altimeter checkpoint location and elevation	NIL
4	VOR checkpoints	NIL
5	INS checkpoints	NIL
6	Remarks	NIL

**OEDM AD 2.9 SURFACE MOVEMENT GUIDANCE AND CONTROL SYSTEM AND MARKINGS**

1	Use of aircraft stand ID signs, TWY guide lines and visual docking/parking guidance system of aircraft stands	Apron Navigational Marking
2	RWY and TWY markings and LGT	RWY Marking: CL, Edge, ID, THR, TDZ, Pre THR RWY Lighting: Edge and Runway end TWY Marking: CL , Edge, Holding Position TWY Lighting: Edge
3	Stop bars	NIL
4	Remarks	NIL

**OEDM AD 2.10 AERODROME OBSTACLES**

In approach/TKOF areas			In circling area and at AD		Remarks
1			2		3
RWY NR/Area affected	Obstacle type Elevation Markings/LGT	Coordinates	Obstacle type Elevation Markings/LGT	Coordinates	
a	b	c	a	b	
NIL	NIL	NIL	NIL	NIL	NIL

**OEDM AD 2.11 METEOROLOGICAL INFORMATION PROVIDED**

1	Associated MET Office	Dawadmi MET Office
2	Hours of service MET Office outside hours	H24
3	Office responsible for TAF preparation Periods of validity	Jeddah Central Forecast Office (CFO) (TAF periods of validity H30). TEL: +966 12 6532173 and +966 12 6532197 FAX: +966 12 6530197
4	Trend forecast Interval of issuance	NIL
5	Briefing/consultation provided	NIL
6	Flight documentation Language(s) used	NIL
7	Charts and other information available for briefing or consultation	NIL
8	Supplementary equipment available for providing information	NIL
9	ATS units provided with information	NIL
10	Additional information (limitation of service, etc.)	+966 11 6434142 Call Jeddah CFO +966 12 6532173 when Forecaster not on duty .

**OEDM AD 2.12 RUNWAY PHYSICAL CHARACTERISTICS**

Designations RWY NR	TRUE & MAG BRG	Dimensions of RWY(M)	Strength (PCN) and surface of RWY and SWY	THR coordinates RWY end coordinates THR geoid undulation	THR elevation and highest elevation of TDZ of precision APP RWY
1	2	3	4	5	6
15	154° GEO 151° MAG	3050 x 45	61/F/B/X/T Asphalt	242743.90N 0440652.33E	THR 3012 FT TDZ 3016 FT
33	334° GEO 331° MAG	3050 x 45	61/F/B/X/T Asphalt	242614.99N 0440740.20E	THR 3031 FT

Slope of RWY-SWY	SWY dimensions (M)	CWY dimensions (M)	Strip dimensions (M)	OFZ	Remarks
7	8	9	10	11	12
0.2% down	NIL	300 x 45	NIL	NIL	CWY 300 M subject to re-lo- cated HT line
0.26% up	NIL	300 x 45	NIL	NIL	-

**OEDM AD 2.13 DECLARED DISTANCES**

RWY Designator	TORA (M)	TODA (M)	ASDA (M)	LDA (M)	Remarks
1	2	3	4	5	6
15	3050	3350	3050	3050	TODA subject to re-location HT-line
33	3050	3350	3050	3050	-

**OEDM AD 2.14 APPROACH AND RUNWAY LIGHTING**

RWY Designator	APCH LGT type LEN INTST	THR LGT colour WBAR	VASIS (MEHT) PAPI	TDZ, LGT LEN	RWY Centre Line LGT Length, spacing, colour, INTST	RWY edge LGT LEN, spacing, colour INTST	RWY End LGT colour WBAR	SWY LGT LEN (M) colour	Remarks
1	2	3	4	5	6	7	8	9	10
15	precision 5 bar CAT I 900 M LIH	NIL	PAPI 3° Both side	NIL	NIL	3050 M 60M white LIH	Red	NIL	NIL
33	NIL	NIL	PAPI 3° Both side	NIL	NIL	3050 M 60M White LIH	Red	NIL	NIL

**OEDM AD 2.15 OTHER LIGHTING, SECONDARY POWER SUPPLY**

1	ABN/IBN location, characteristics and operational hours	On top of Fire and Rescue building ALTN Green White / SS-SR and O/R
2	LDI location and LGT Anemometer location and LGT	NIL
3	TWY edge and centre line lighting	NIL
4	Secondary power supply/switch-over time	Diesel Generator / 07 sec
5	Remarks	NIL

**OEDM AD 2.16 HELICOPTER LANDING AREA**

1	Coordinates TLOF or THR of FATO Geoid undulation	NIL
2	TLOF and/or FATO elevation M/FT	NIL
3	TLOF and FATO area dimensions, surface, strength, marking	NIL
4	True BRG of FATO	NIL
5	Declared distance available	NIL
6	APP and FATO lighting	NIL
7	Remarks	NIL

**OEDM AD 2.17 ATS AIRSPACE**

1	Designation and lateral limits	ATZ: Circle with radius of 5 NM centered on 242659N 0440716E
2	Vertical limits	SFC to 6000 FT
3	Airspace classification	G
4	ATS unit call sign Language(s)	NIL
5	Transition altitude	13000 FT
6	Remarks	NIL

**OEDM AD 2.18 ATS COMMUNICATION FACILITIES**

Service designation	Call sign	Frequency	Hours of operation	Remarks
1	2	3	4	5
TIBA	TIBA	122.800 MHZ	H24	TIBA Procedure must be strictly applied Call FRS 15 MIN before ARR time on FREQ 133.500 MHZ

**OEDM AD 2.19 RADIO NAVIGATION AND LANDING AIDS**

Type of aid, MAG VAR, CAT of ILS/MLS (For VOR/ILS/MLS, give declination)	ID	Frequency	Hours of operation	Position of transmitting antenna coordinates	Elevation of DME transmitting antenna	Remarks
1	2	3	4	5	6	7
DVOR/DME	DAW	116.100 MHZ CH 108X	H24	242656.2N 0440709.1E	3100 FT	NIL
LOC RWY 15 ILS CAT I	IDAW	110.700 MHZ	H24	242606.2N 0440744.9E		NIL
GP		330.200 MHZ	H24	242733.0N 0440653.5E		NIL
DME	IDAW		H24	242733.0N 0440653.5E	NIL	DME reads Zero at the DME antenna

**OEDM AD 2.20 LOCAL TRAFFIC REGULATIONS**

NIL

**OEDM AD 2.21 NOISE ABATEMENT PROCEDURES**

NIL

**OEDM AD 2.22 FLIGHT PROCEDURES**

NIL

**OEDM AD 2.23 ADDITIONAL INFORMATION**

NIL

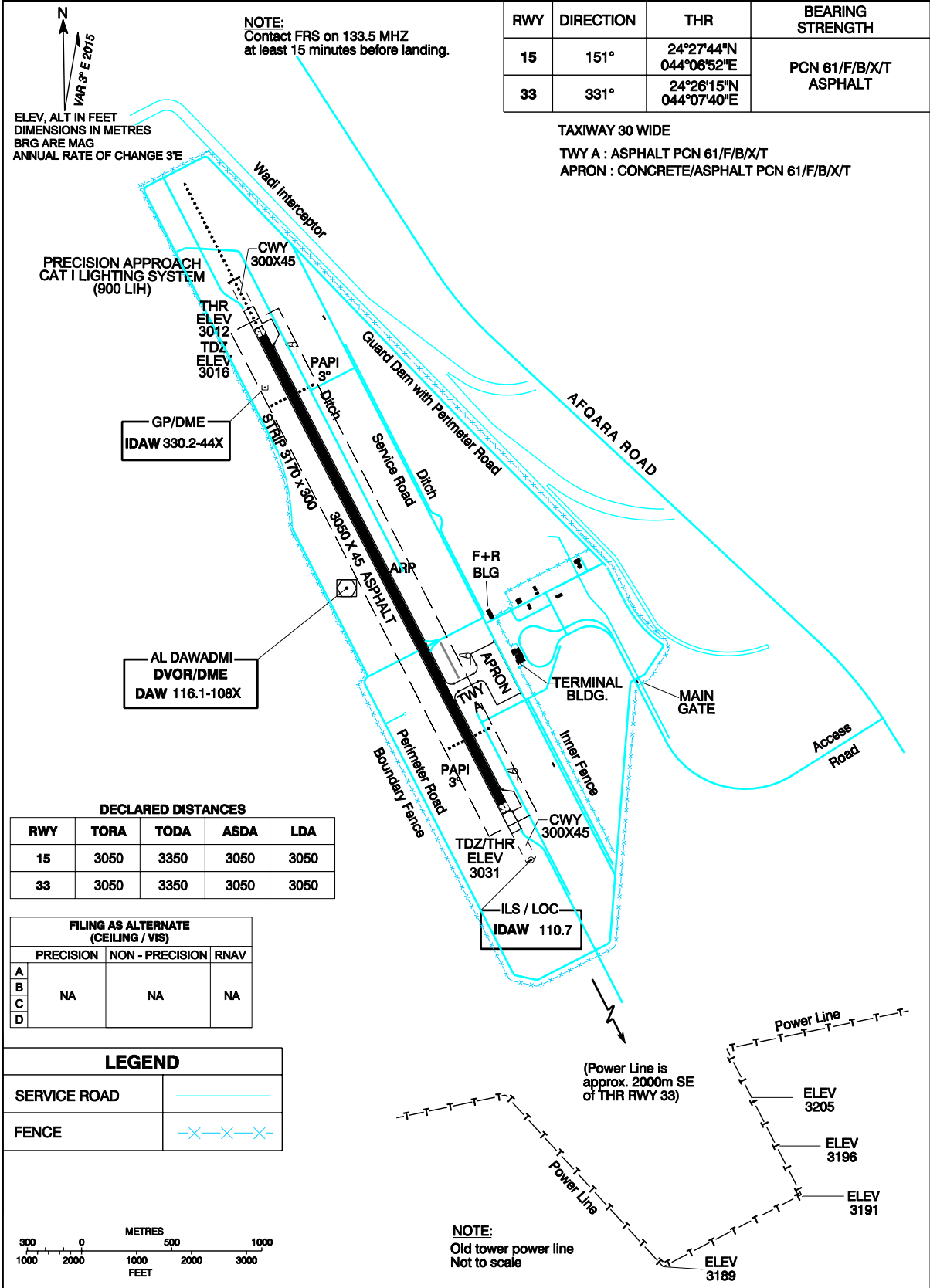
**OEDM AD 2.24 CHARTS RELATED TO AN AERODROME**

<b>Chart name</b>	<b>Page</b>
Aerodrome Chart - ICAO	AD 2-OEDM-7
Instrument Approach Chart - ICAO (ILS/DME RWY 15) ILS/DME RWY 15 (Aeronautical data tabulation)	AD 2-OEDM-9 AD 2-OEDM-10
Instrument Approach Chart - ICAO (VOR/DME RWY 15) VOR/DME RWY 15 (Aeronautical data tabulation)	AD 2-OEDM-11 AD 2-OEDM-12
Instrument Approach Chart - ICAO (VOR/DME RWY 33) VOR/DME RWY 33 (Aeronautical data tabulation)	AD 2-OEDM-13 AD 2-OEDM-14
Instrument Approach Chart - ICAO (VOR RWY 15) VOR RWY 15 (Aeronautical data tabulation)	AD 2-OEDM-15 AD 2-OEDM-16
Instrument Approach Chart - ICAO (VOR RWY 33) VOR RWY 33 (Aeronautical data tabulation)	AD 2-OEDM-17 AD 2-OEDM-18
Instrument Approach Chart - ICAO (RNAV ILS RWY 15) RNAV ILS RWY 15 (Aeronautical data tabulation)	AD 2-OEDM-19 AD 2-OEDM-20

**AERODROME CHART - ICAO**      24°26'59"N      ELEV 3031      **AL DAWADMI/AI Dawadmi**  
 044°07'16"E      UNCONTROLLED AD

FRS: 133.5  
TIBA: 122.8

RWY	DIRECTION	THR	BEARING STRENGTH
15	151°	24°27'44"N 044°06'52"E	PCN 61/F/B/X/T ASPHALT
33	331°	24°26'15"N 044°07'40"E	



CHANGE : Airport name revised

**INTENTIONALLY BLANK**



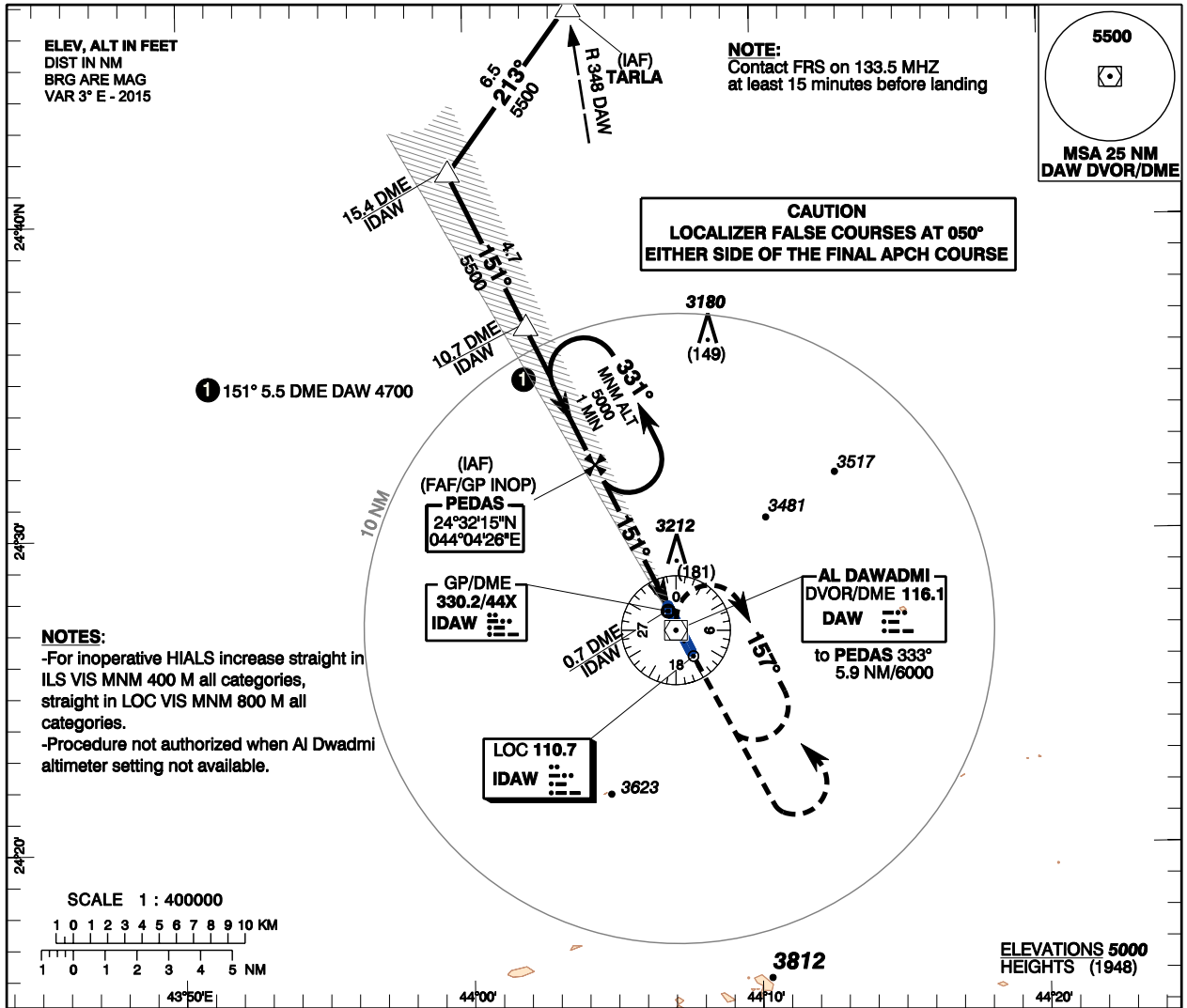
**INSTRUMENT  
APPROACH  
CHART - ICAO**

**AERODROME ELEV 3031 ft**  
**HEIGHTS RELATED TO  
TDZ RWY 15 - ELEV 3016 ft**

FRS: 133.5  
TIBA : 122.8  
UNCONTROLLED AD

**AL DAWADMI/AI Dawadmi (OEDM)**

**ILS/DME RWY 15**



**TRANSITION ALT 13000**  
**TRANSITION LEVEL FL150**

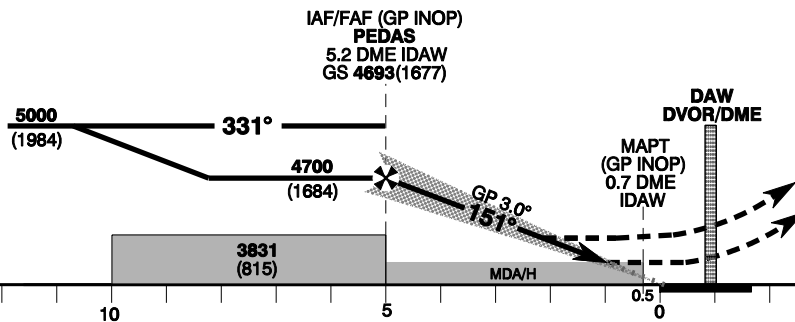
**MISSED APPROACH**

Climb on RDL 157 to 4500 FT then climbing LT to 6000 FT direct DAW DVOR/DME and hold.

**ILS TCH 55**

**THR ELEV 3012 / TDZE 3016**

NM to/from THR RWY 15



CHANGE : Airport name revised

Amdt :3, 04 AUG 05

Straight-in Approach	ILS/DME LOC (GP INOP)	ACFT CAT	A				B				C				D											
			DA(H)	3216 (200)			3440 (424)			4000 (969)			4140 (1109)			GND SPEED										
		RVR/VIS(m)	800												Knots				70	90	110	120	130	150	170	190
		MDA(H)	800												min:s				3:51	3:00	2:27	2:15	2:05	1:48	1:35	1:25
		VIS(m)	800				1200				Ft/min				371	478	584	637	690	796	902	1008				
Circling		MDA(H)	3580 (549)				4000 (969)				4140 (1109)				DME IDAW NM				5	4	3	2	1			
		VIS(m)	1600				4800				ALT (HGT) 3.0° APCH															

**AL DAWADMI/AI Dawadmi (OEDM)**

**ILS/DME RWY 15**

**AERONAUTICAL DATA TABULATION**

<b>ILS/DME approach to RWY 15 from DAW DVOR/DME</b>	
<b>Fix/point</b>	<b>Coordinates</b>
<b>TARLA (IAF) - RDL 348/20.0 DME DAW</b>	24°46'43.8"N 044°03'33.8"E
<b>15.4 DME IDAW</b>	24°41'25.9"N 043°59'28.7"E
<b>10.7 DME IDAW</b>	24°37'11.7"N 044°01'44.6"E
<b>PEDAS (IAF) (FAF/GP INOP) - 5.2 DME IDAW</b>	24°32'15.4"N 044°04'26.0"E
<b>IDAW ILS/LOC</b>	24°26'06.2"N 044°07'44.9"E
<b>IDAW ILS GP/DME</b>	24°27'32.9"N 044°06'54.5"E
<b>DAW DVOR/DME</b>	24°26'56.2"N 044°07'09.1"E
<b>THR RWY 15</b>	24°27'43.90"N 044°06'52.33"E

CHANGE : 15.4 DME IDAW, 10.7 DME IDAW added

Amdt : 3, 04 AUG 05

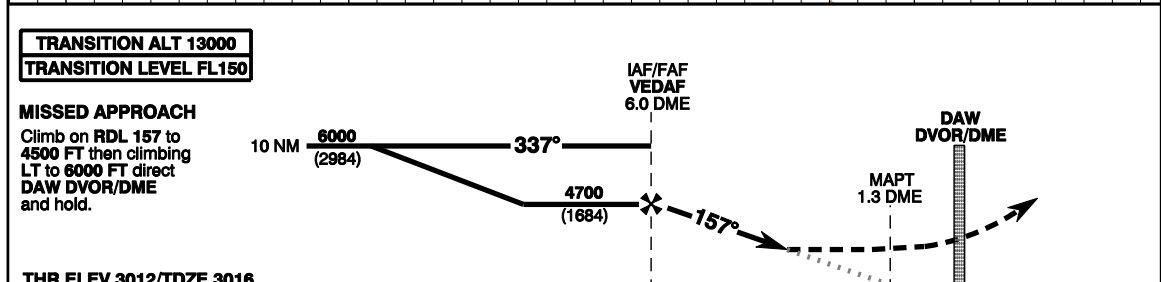
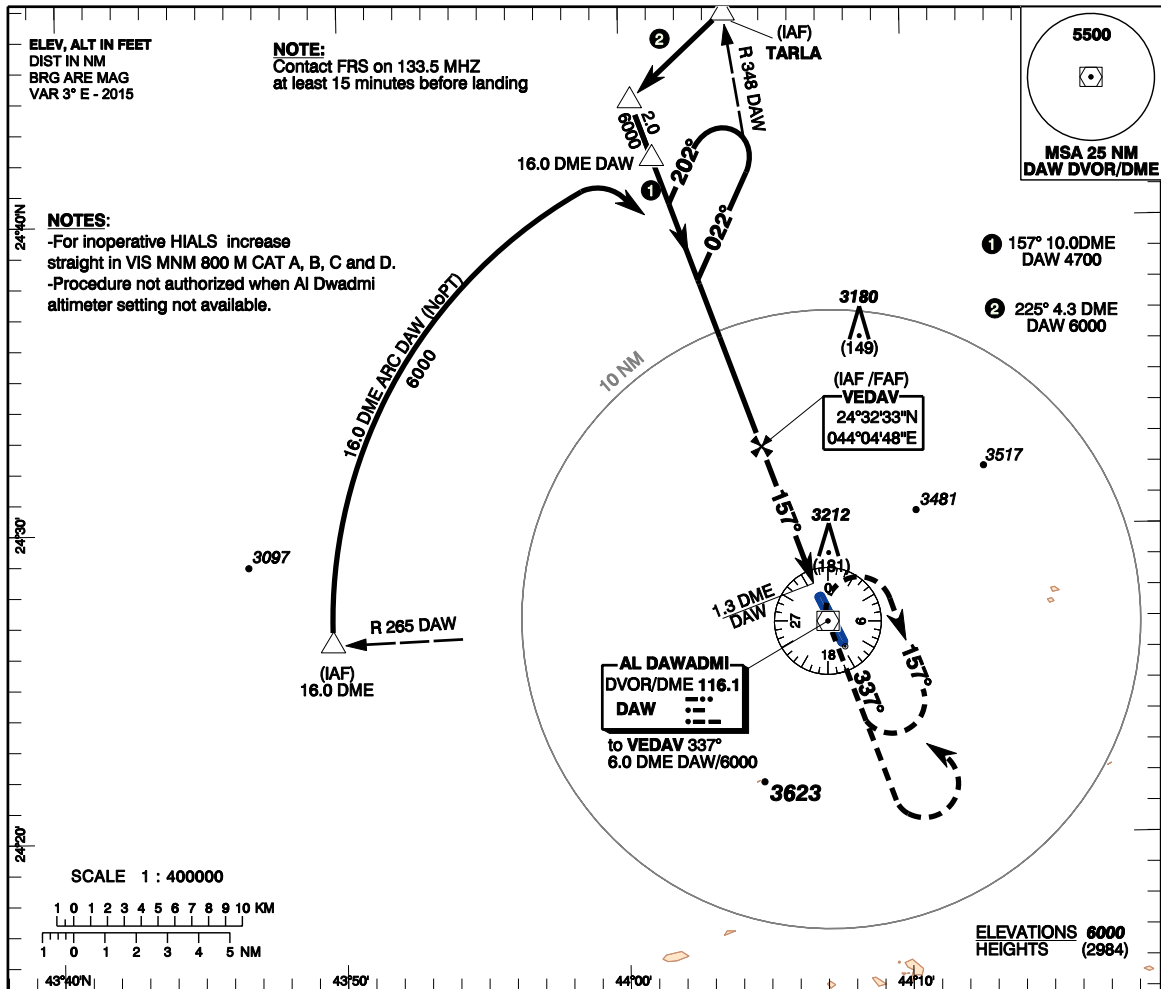
**INSTRUMENT  
APPROACH  
CHART - ICAO**

**AERODROME ELEV 3031 ft**  
**HEIGHTS RELATED TO  
TDZ RWY 15 - ELEV 3016 ft**

FRS : 133.5  
TIBA : 122.8  
UNCONTROLLED AD

**AL DAWADMI/AI Dawadmi (OEDM)**

**VOR/DME RWY 15**



Straight-in Approach	VOR/DME	ACFT CAT	A	B	C	D	GND SPEED	Knots	70	90	110	120	130	150	170	190
		DA(H)	3480 (464)													
		VIS(m)	800		1200	1600	Rate of Descent	Ft/min								
		MDA(H)	3580 (549)		4000 (969)	4140 (1109)										
		VIS(m)	1600		4800											
		DME DAW NM	5	4	3	2	1									
		ALT (HGT) 3.0° APCH														

CHANGE : Minor  
Amdt : 2, 13 MAY 04

**AL DAWADMI/AI Dawadmi (OEDM)**

**VOR/DME RWY 15**

**AERONAUTICAL DATA TABULATION**

<b>VOR/DME approach to RWY 15 from DAW DVOR/DME</b>	
<b>Fix/point</b>	<b>Coordinates</b>
<b>TARLA (IAF) - RDL 348/20.0 DME DAW</b>	24°46'43.8"N 044°03'33.8"E
<b>16.0 DME DAW</b>	24°42'01.1"N 044°01'08.5"E
<b>2.0 to 16.0 DME DAW</b>	24°43'54.2"N 044°00'23.4"E
<b>VEDAV (IAF/FAF) - 6.0 DME DAW</b>	24°32'33.4"N 044°04'47.8"E
<b>DAW DVOR/DME</b>	24°26'56.2"N 044°07'09.1"E
<b>THR RWY 15</b>	24°27'43.90"N 044°06'52.33E

CHANGE : 2.0 to 16.0 DME DAW and 16.0 DME DAW added

Amdt : 2, 13 MAY 04

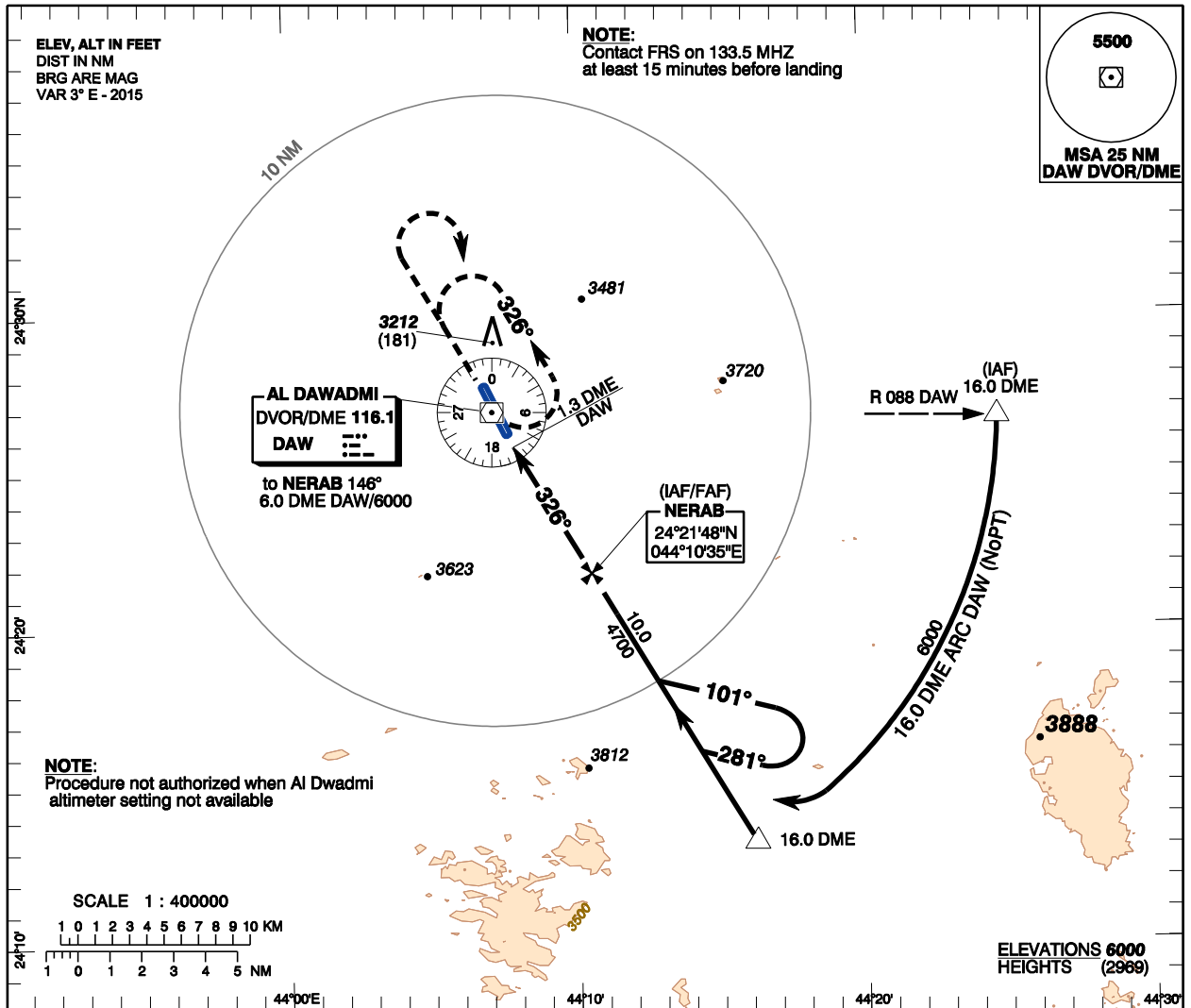
**INSTRUMENT  
APPROACH  
CHART - ICAO**

**AERODROME ELEV 3031 ft**  
**HEIGHTS RELATED TO  
TDZ RWY 33 - ELEV 3031 ft**

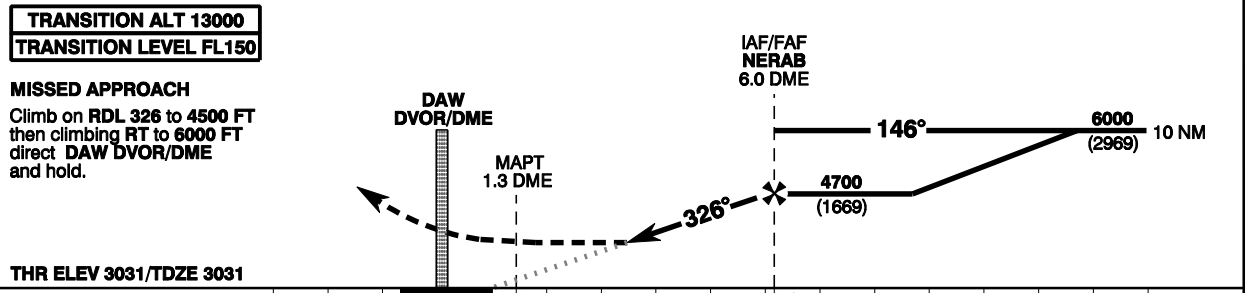
FRS : 133.5  
TIBA : 122.8  
UNCONTROLLED AD

**AL DAWADMI/AI Dawadmi (OEDM)**

**VOR/DME RWY 33**



CHANGE : Airport name revised



Amdt :1, 25 DEC 03

Straight-in Approach	VOR/DME	ACFT CAT	DA(H)				GND SPEED	Knots									
			A	B	C	D		70	90	110	120	130	150	170	190		
			3480 (429)														
			1600		2000		2400		FAF-MAPT 4.7 NM								
			3580 (549)		4000 (969)		4140 (1109)		Rate of Descent								
			1600		4800												
			DME DAW NM		5		4		3		2		1				
			ALT (HGT) 3.0° APCH														

**AL DAWADMI/AI Dawadmi (OEDM)**

**VOR/DME RWY 33**

**AERONAUTICAL DATA TABULATION**

<b>VOR/DME approach to RWY 33 from DAW DVOR/DME</b>		
<b>Fix/point</b>	<b>Coordinates</b>	
<b>NERAB (IAF/FAF) - 6.0 DME DAW</b>	24°21'48.3"N	044°10'35.1"E
<b>DAW DVOR/DME</b>	24°26'56.2"N	044°07'09.1"E
<b>THR RWY 33</b>	24°26'14.99"N	044°07'40.19"E

CHANGE : Airport name revised

Amdt :1, 25 DEC 03

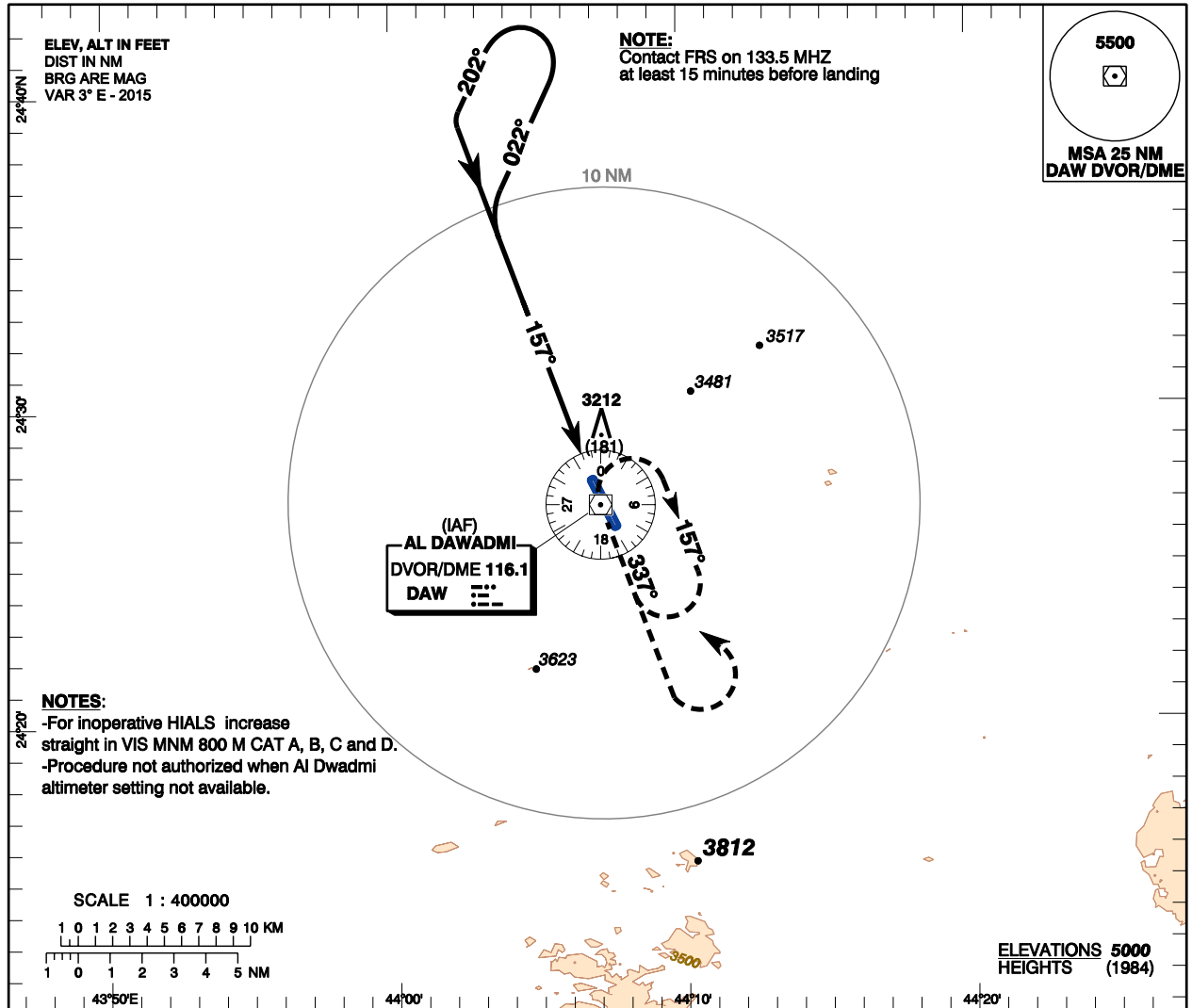
**INSTRUMENT  
APPROACH  
CHART - ICAO**

**AERODROME ELEV 3031 ft**  
**HEIGHTS RELATED TO  
TDZ RWY 15 - ELEV 3016 ft**

FRS: 133.5  
TIBA: 122.8  
UNCONTROLLED AD

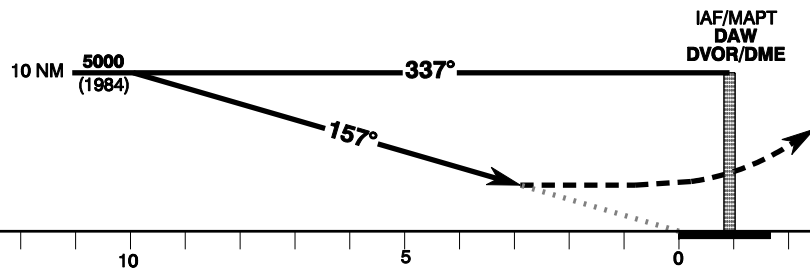
**AL DAWADMI/AI Dawadmi (OEDM)**

**VOR RWY 15**



**TRANSITION ALT 13000**  
**TRANSITION LEVEL FL150**

**MISSED APPROACH**  
Climb on RDL 157 to 4500 FT  
then climbing LT to 6000 FT  
direct DAW DVOR/DME  
and hold.



**THR ELEV 3012/ TDZE 3016**

**NM to/from THR RWY 15**

		ACFT CAT	A	B	C	D
Straight-in Approach	VOR	DA(H)	3520 (504)			
		VIS(m)	800		1600	
Circling	VOR	MDA(H)	3580 (549)		4000 (969) 4140 (1109)	
		VIS(m)	1600		4800	

CHANGE : Airport name revised

Amdt :1, 25 Dec 03

**AL DAWADMI/AI Dawadmi (OEDM)**

**VOR RWY 15**

**AERONAUTICAL DATA TABULATION**

<b>VOR approach to RWY 15 from DAW DVOR/DME</b>		
<b>Fix/point</b>	<b>Coordinates</b>	
<b>DAW DVOR/DME</b>	24°26'56.2"N	044°07'09.1"E
<b>THR RWY 15</b>	24°27'43.90"N	044°06'52.33"E

CHANGE : Airport name revised

Amdt : 1, 25 Dec 03



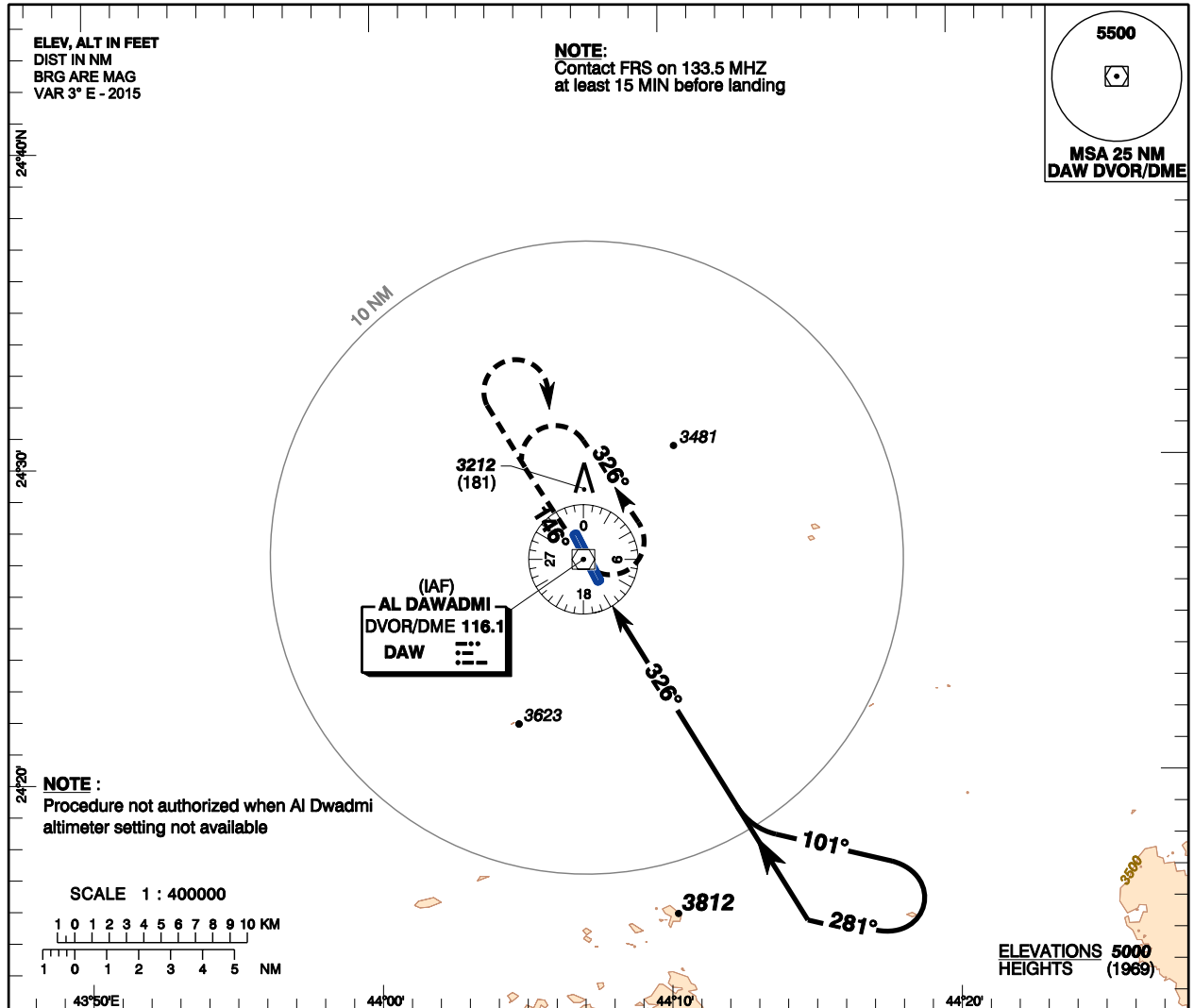
**INSTRUMENT  
APPROACH  
CHART - ICAO**

**AERODROME ELEV 3031 ft**  
**HEIGHTS RELATED TO  
TDZ RWY 33 - ELEV 3031 ft**

FRS : 133.5  
TIBA : 122.8  
UNCONTROLLED AD

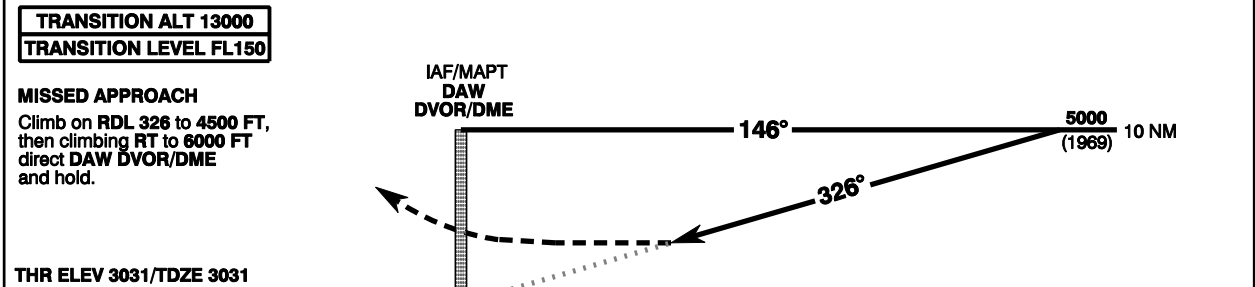
**AL DAWADMI/AI Dawadmi (OEDM)**

**VOR RWY 33**



CHANGE : Airport name revised

Amdt : 1, 25 DEC 03



0 5 10

		ACFT CAT	A	B	C	D
Straight-in Approach	VOR	DA(H)	3520 (489)			
		VIS(m)	1600		2000	2400
Circling		MDA(H)	3580 (549)		4000 (969)	4140 (1109)
		VIS(m)	1600		4800	

**AL DAWADMI/AI Dawadmi (OEDM)**

**VOR RWY 33**

**AERONAUTICAL DATA TABULATION**

<b>VOR approach to RWY 33 from DAW DVOR/DME</b>		
<b>Fix/point</b>	<b>Coordinates</b>	
<b>DAW DVOR/DME</b>	<b>24°26'56.2"N</b>	<b>044°07'09.1"E</b>
<b>THR RWY 33</b>	<b>24°26'14.99"N</b>	<b>044°07'40.19"E</b>

CHANGE: Airport name revised

Amdt :1, 25 DEC 03

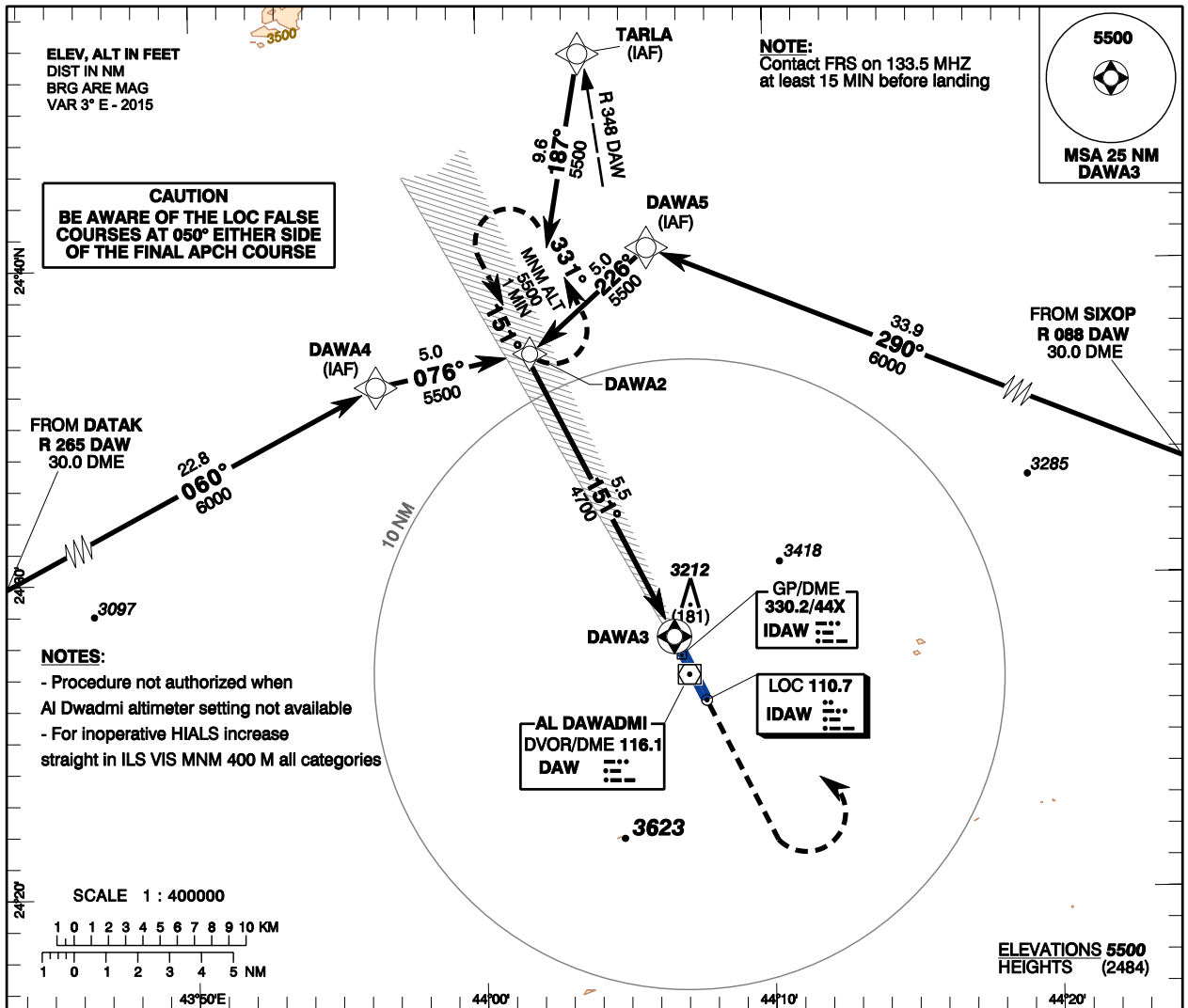
**INSTRUMENT  
APPROACH  
CHART - ICAO**

**AERODROME ELEV 3031 ft  
HEIGHTS RELATED TO  
TDZ RWY 15 - ELEV 3016 ft**

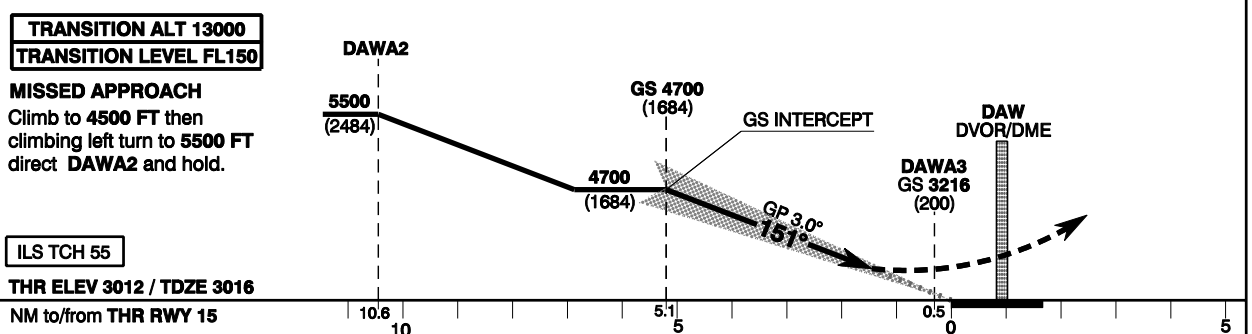
FRS : 133.5  
TIBA : 122.8  
UNCONTROLLED AD

**AL DAWADMI/AI Dawadmi (OEDM)**

**RNAV ILS RWY 15**



CHANGE : MISSED APCH TEXT ADD.



Amdt : Original, 04 AUG 05

Straight-in Approach	ILS CAT I	ACFT CAT	A	B	C	D	GND SPEED									
		DA(H)	3216 (200)				Knots	70	90	110	120	130	150	170	190	
		VIS(m)	800				FAF-MAPT 4.58 NM	min:s	3:56	3:03	2:30	2:17	2:07	1:50	1:37	1:27
Circling		MDA(H)	3580 (549)	4000 (969)		4140 (1109)	Rate of Descent	ft/min	371	478	584	637	690	1:50	902	1008
		VIS(m)	1600		4800											
							DME IDAW NM	5	4	3	2	1				
							ALT (HGT) 3.0° APCH									

**AL DAWADMI/AI Dawadmi (OEDM)**

**RNAV ILS RWY 15**

**AERONAUTICAL DATA TABULATION**

<b>RNAV ILS approach to RWY 15 from DAW DVOR/DME</b>		
<b>Fix/point</b>	<b>Coordinates</b>	
<b>TARLA (IAF) - RDL - 348/20.0 DME DAW</b>	24°46'43.8"N	044°03'33.8"E
<b>DAWA4 (IAF)</b>	24°36'11.5"N	043°56'23.4"E
<b>DAWA5 (IAF)</b>	24°40'32.3"N	044°05'51.9"E
<b>SIXOP RDL - 088/30.0 DME DAW</b>	24°27'07.8"N	044°40'01.7"E
<b>DATAK RDL - 265/30.0 DME DAW</b>	24°25'26.3"N	043°34'19.1"E
<b>DAWA2</b>	24°37'12.3"N	044°01'45.8"E
<b>DAWA3 (Missed approach WPT)</b>	24°28'09.2"N	044°06'38.7"E
<b>GS INTERCEPTION</b>	24°32'16.6"N	044°04'25.4"E
<b>THR RWY 15</b>	24°27'43.90"N	044°06'52.33"E

CHANGE : Airport name revised

Amdt :Original, 04 AUG 05